



LOCAL TALK BOOK

CONTENT

Intro	3
The Theater Hall	4
Balcony & Lodge	5
The Studio	6
The Bank's Secret	7
The Foyer	8
The Red Danger	9
The Wine Cellars	10
The Kitchen	11
Other Spaces	12
Styling	13
Entertainment	14
Culinary	15
Theater Dinners	16
Cultural Events	17
Conferences & Meetings	18
Light & Sound	19
History	20
Technics	21
How to reach us	25
Canceling & Info	26
Info Spaces	27
Setting up & Wrap up	31
Rates	32



INTRO

TOBACCO Theater: A mighty, industrial theater.

TOBACCO Theater is located in the heart of Amsterdam (Nes 75), at a walking distance from the Central Station. The former tobacco auction house is totally renovated into a modern, industrial theater and event location with lots of amazing details, a multifunctional location for any event. This city monument offers various rooms, divided over three floors, each with a unique character.



THE THEATER HALL

MAXIMUM 500 PEOPLE - SIZE: 200 M²

You won't expect this, walking through the Nes (the cultural high street of Amsterdam). An impressively high room built of steel and robust plaster.

Industrial, fresh, sturdy.

The attention to detail and history is not easily overlooked! Upon entering, the eye is drawn to the industrial bar and the steel balcony. Thanks to the historical shed roofing, the northern light enters the space beautifully. Of course automatic blackout curtains are available. The Theater Hall is fully outfitted with an unique lighting system, detailing the ceiling and rough walls beautifully.

The Theater Hall is the place for delicious theater-dinners, international conferences, grand product presentations, theatrical events and lovely performances.

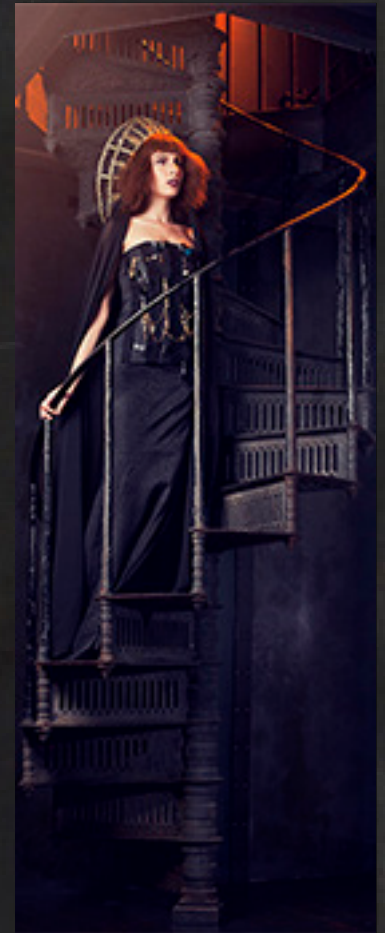


BALCONY & LODGE

MAXIMUM: 60 PEOPLE - SIZE: 45 M²

Above the robust bar is the steel Balcony, spanning the entire width of the hall. It is a whopping 13 meters long. The Balcony is connected to the Lodge.

With a direct view of the theatre it is a preferred spot for VIP's or to seat the director of a beautiful performance. And always overseen by the graffiti artwork "The Cuban Lady".



THE STUDIO

MAXIMUM: 100 PEOPLE - SIZE: 75 M²

The Studio is an impressively high room (9 meters), with a slanted glass roof and clean sleek walls. The Studio offers its own pantry, bathroom, sound system and beamer.

Here you will find various art pieces, for instance "Johan Cruijff", a painting by Ellen Davidzon, theatrical photo's by Richard Terborg and a light-art by the young artist Meeus van Dis.

The Studio is a preferred spot for receptions, meetings, photo-shoots and modern product presentations.



THE BANK'S SECRET

MAXIMUM: 50 PEOPLE - SIZE 40 M²

Why is this room called The Bank's Secret? Here you find is a bank vault, one like you haven't seen before! No one has succeeded in unlocking this big, sturdy vault since 1953.

The Bank's Secret is richly decorated in a golden Art Deco style, with a direct view over the cultural main street of Amsterdam. On the wall there's an artwork by Erwin Olaf; Separation 4. This Dutch royal photographer is the first ever photographer to exhibit in the Rijksmuseum Amsterdam.

The Bank's Secret is perfect for both private dinners and commercial meetings. Also it is an ideal break-out room for the adjoining Studio.



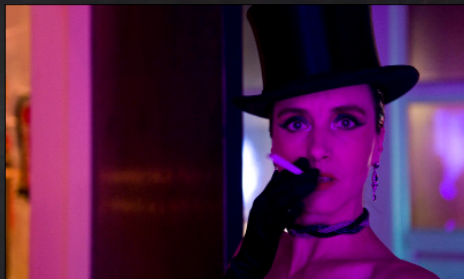
THE FOYER

MAXIMUM: 50 PEOPLE - SIZE 40 M²

Internationally renowned interior architect Wim van de Oude Wetering created the foyer.

A cosy and calm place with a view over the Nes and adjoining the Theatre Hall.

A leather Double-Chesterfield, an antique piano and an artwork by the painter Van Donkersloot. Together they give The Foyer the look and feel of an old English gentlemen's society. Naturally this spot allows the gentlemen to enjoy a smoke, of course the same goes for the ladies.



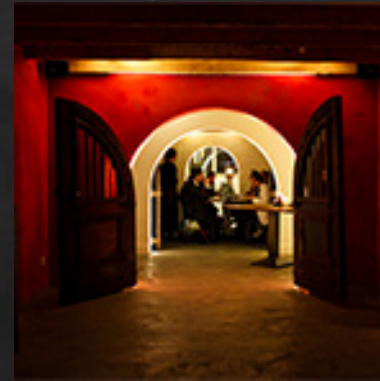
THE RED DANGER

MAXIMUM: 40 PEOPLE - SIZE 36 M²

The red, beating heart of TOBACCO Theater!
Located in the catacombs, this artistic place is buzzing with love and passion.

A red space with clay walls, designed by wall artist Paul Janssen. It's the natural connection between The Theater Hall above and the Mediterranean Wine Cellars and The Cookingstudio 1012.

A wooden mask from Africa depicting Frajurikka is keeping watch, making sure that everything is to your liking this evening.

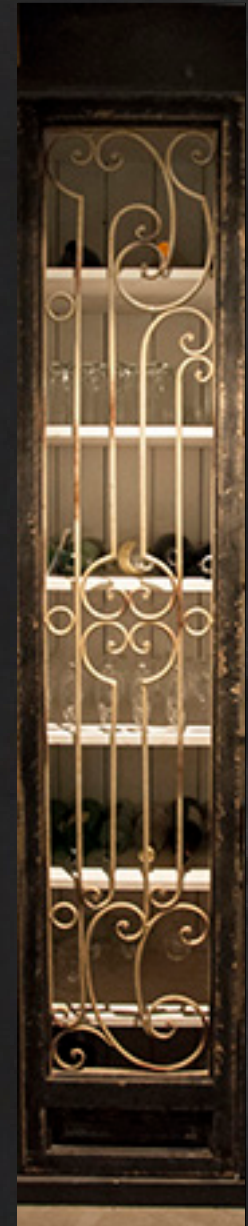


THE WINE CELLARS

MAXIMUM: 50 PEOPLE - SIZE: 50 m²

The authentic Wine Cellars are hidden in the catacombs of the theater. A classical scene of artistic arches and Mediterranean walls.

The wine cellars feature their own bar, sound system, and a cosy fireplace. The rural French atmosphere is enhanced by the long oak tables with small wooden seats. A great place for your more intimate dinners, meetings or for a reception before a performance in The Theatre Hall. This space is suitable for any event. Surprise us if you can?

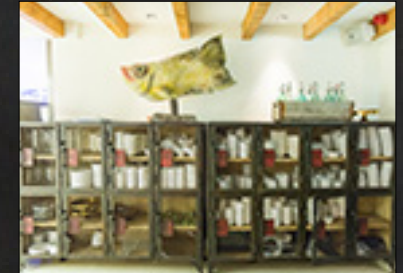


THE KITCHEN

SIZE: 100 m²

TOBACCO Theater features a spacious and professional outfitted kitchen, including a scullery. The kitchen is designed in close collaboration with the chef and is thereby guaranteed to be very efficient. Due to the routing and facilities, it is possible to serve up to 700 people.

Naturally all renowned caterers are welcome in our kitchen. There is a 6-hub furnace, two big 10/1 gastronorm combined steamers by Zanussi, 5 mobile steel workspaces, a double fryers (8 liters each), two double regal carts 17/1, electric plate heater (capacity: 300 plates, 30 cm diameter) and various small utensils.



OTHER SPACES

Right next to the entrance is the reception desk. The place to be for tickets. But also the central place where guests can sign up for a conference or presentation. The reception is basically the "boiling room" for any event.

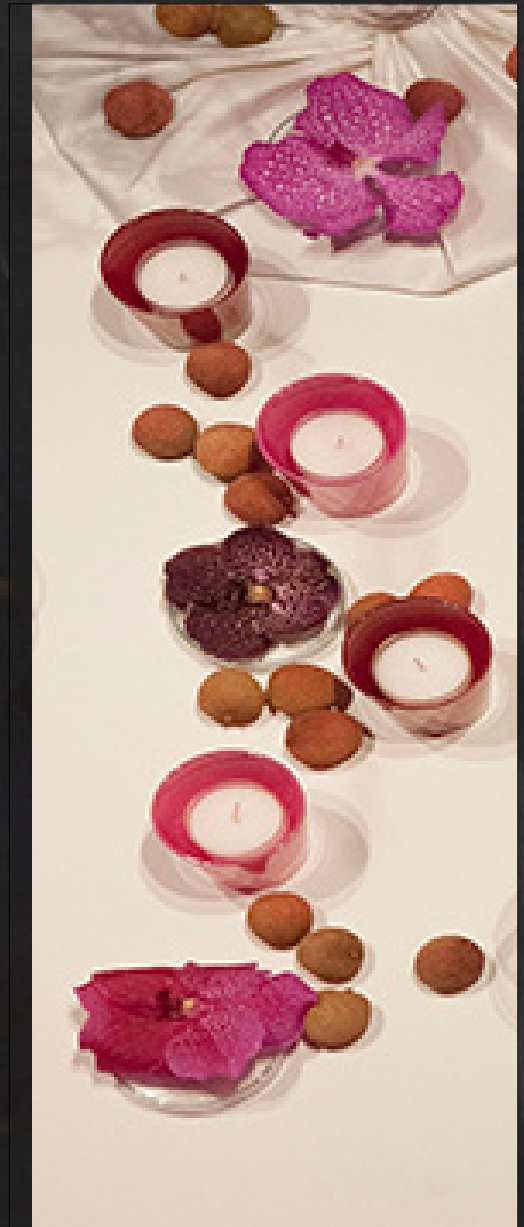
There are several toilets in TOBACCO Theater -with a total of 14 toilets- (obviously also a wheelchair accessible toilet). Even here in the smallest room in the house a fresh hint to the theater can be found.

For the performers we offer two spacious dressing rooms with showers and a toilet. The dressing rooms have a backstage route to the stage.



STYLING

For styling of your event we use our extensive experience in theater scenery and decoration of events. Our styling-team specializes in the decoration of commercial events and creative concepts, keeping in mind the clients wishes and always aware of the latest trends.



ENTERTAINMENT

TOBACCO has a rich experience with cultural acts and business entertainment. Precisely because of our background in the world of events, there is an extensive pool of creativity present. We're happy for you to take advantage of this and bring you in touch with the right artists and agencies in all the confidence.



CULINARY

From the start of his career, our Chef Dennis Huwaë was predominantly in charge of kitchens owning up to two Michelin stars, for instance two-starred restaurant &samhoud. 'From that point on he developed his feeling for gastronomy' utters GaultMilau, who declared him the most talented Chef of the year 2018. Besides being Patron-cuisinir of restaurant Daalder, Dennis has joined TOBACCO's kitchen crew and has therefore written a food book for the diverse set of events they organise.

To Huwaë, the creation of a dish is a search for the perfect combination of ingredients. Inspired by 'street food' all over the world, he creates his recipes by using classic techniques as a starting point in order to conjure up his own signature dish.

'Let nature run its course. Choose beautiful products and treat them with love and respect. Eventually all that matters is the love for your products and the time you invest in the creation of your dishes' – Dennis Huwaë



THEATER DINNERS

From the very beginning we organize exclusive theater dinners, produced in our own direction.

We work with professionals from Palazzo and Cirque du Soleil amongst others. All in close consultation with Dennis Huwaë so that the courses of the dinner connect the evening perfectly. We can proudly say that we have come to two great evenings: full of theater, live music, magic, humour and culinary delights.

Putting on the Ritz

We'll take you back to the posh times of Hotel The Ritz in The Roaring Twenties. Acrobatics, singing, illusionism, trapeze, tissue acts and live music. The theater section is led by our director Lee Hayes, an internationally acclaimed director.

"Welcome to the Ritz."

La Folie

The Theater Hall is transformed into a Moulin Rouge with many candles on the tables and rich chandeliers hanging from the ceiling. Enjoy this "Soirée Magnifique" to the fullest as a real Parisian "bon vivant". Fantastic live music and variety shows in which you yourself regularly play a role on stage. Your hidden talents will surely emerge.

"Bienvenue Café Variety: La Folie."

Of course we can also produce a show, completely customized to your needs. We'd love to!



CULTURAL EVENTS

TOBACCO Theater might be the weirdest theater of The Netherlands. A place where culture and commerce strengthen each other (C2C). Without culture there is no commerce and without commerce no culture.

With our non-profit foundation we give young artists and freebooters a chance to show their art to the greater audience. The concept is fully in the hands of the artists, people that have a place in our heart.

We receive no municipal grants and we don't make up the calendar a year in advance. We organize the shows, when we feel that there is a need of the audience. Or if there are concepts in our path, which we believe they are so unique that we like to invest. We choose to always be up to date and surprising.



CONFERENCES & MEETINGS

TOBACCO Theater is an industrial location full of history, inspiration and culture. A place where commerce and business events effortlessly find their way.

Conference

Everything is in place to organize a successful (international) conference or symposium. A spacious, high-ceilinged room with a fantastic northern lights and many break-out rooms. Modern facilities, a unique illumination (or darkening), a flat floor and the opportunity for free setups. And perhaps most importantly: our highly acclaimed, attentive and helpful staff. These are our unique ingredients to get your message to your audience, with the right impact. Welkom, herzlich willkommen, bienvenido, welcome honored guests!

Meeting

In our multi-purpose building, there are many options for a successful meeting. We have several break-out rooms, each with a unique character. And all modern facilities are available (read more on page Technics). From an intimate to a large-scale meeting, from 2 to 600 people. Our rooms are always for rent exclusively, separately from each other. With us you have the choice of different meeting packages. If required, we also take care of your breakfast, lunch, dinner or drinks after. We will gladly inform you about all of this in person.

TOBACCO Theater: Guarantee for an exclusive meeting full of inspiration and a free spirit!



LIGHT & SOUND

Lighting and sound are essential for setting up the desired atmosphere. We work together with Smits Light & Sound in Hilversum.

A professional lighting is obviously a standard feature in TOBACCO Theater and it can be expanded to suit your needs. The same naturally applies to the sound system.

For more information on the page Technics.



HISTORY

Nes 75-87 has a rich history of residents and businesses.

It all started in 1342, when the Nes became a part of Amsterdam. In the beginning of the 15th century a cluster of cloisters emerged behind the Rokin. Names of side streets of the Nes still remind us of these days, for example "Gebed zonder End" meaning Prayer with no End.

In the 17th and 18th centuries, the Nes developed into a lively center of shops and businesses, where signs gave color and life to the houses. Where stores are, cafes also arise. And so the Nes developed to a thriving street in the 19th century. The Nes was the place to be.

Around 1900, the Nes fell into disrepair and was shunned by the greater public. Where once entertainment flourished, now tobacco firms made their trade. The street made a deserted impression in the evening. The current TOBACCO Theater served as a tobacco auction building at this time. The building is pointed towards the north exactly, giving tobacco buyers the purest light. So that the tobacco leaves were properly assessed on

their quality and traded fairly.

Later on, the TOBACCO Theater was used as an auction house for Sotheby - Mak van Waay.

In the sixties the theater life revived on the Nes. Tobacco Auction houses were converted into theaters like the Engelenbak, Het Vlaams Cultureel centrum: De Brakke Grond and Comedy Theater. In the building Nes 75-87 settled the Cosmic Theater.

PromoPodium

Since 2007 Erik van Wilsum, D'Erikteur of PromoPodium BV, is the proud owner of Nes 75-87. The building is proudly reopened in October 2011 after a complete renovation. Industrial and characteristic elements of the historic building are preserved and modern facilities added.

The Nes is alive and kicking once again, and last but not least including a special theater where culture and commerce have found each other.



TECHNICAL SPECIFICATIONS

GRAND THEATRE HALL

Sound specifications:

FOH console:	1x Midas M32 Local: 32 in, 8 out Stage: 32 in, 16 out (Midas DL32)
Speakers:	4x L-Acoustics ARCS (main) 2x L-Acoustics ARCS Focus (main) 2x L-Acoustics SB18 sub (main) 2x L-Acoustics X8 (infill stage, on tripod) 2x L-Acoustics X8 (delay balcony)
Amplifiers:	1x L-Acoustics LA4X 1x L-Acoustics LA8
Monitors:	On request
Microphones handhelds:	1x Shure ULXD4D 2x Shure ULX2D/beta87 wireless
Microphone:	2x K&M microphone tripod
Microphones headsets:	On request: 1x Shure ULXD4D 2x Shure ULXD1 beltpack 2x DPA 4066F beige headset
DI's:	4x Radial ProD2 stereo DI box
DJ set:	On request: 2x Pioneer CDJ2000Nexus 1x Pioneer DJM900 1x QSC K8 monitor (on tripod)

Sound restrictions: In TOBACCO Theatre we have a sound limit of 90 decibel before 23:00 and a limit of 89 decibel after 23:00. Violation of this restriction gives TOBACCO Theatre the right to stop the performance. The consequences and costs are met by the client.

Light specifications:

Desk:	1x High End Systems Roadhog 4 console
Dimmers:	1x TTL 12 channel dimmer for the pupose of the halogen spots (home lighting)
Controls:	1x ELC DMXLAN switch 8 2x ELC Node8 1x ELC AC612 XUB (standard presets, behind the bar)
Hazer:	1x JEM K1
Grid:	8x Robe DL4S led profile 8x Robe DL4F led wash 6x Robe LEDbeam150 6x CLF Conan RGBW ledspot zoom 11-58gr 6x CLF tophat for Conan
Ceiling:	4x 13m TDE ledstrip integrated in the ceiling
Walls:	28x CLS Pixelbar tri-colore, integrated in plinth

All of the light fittings in TOBACCO have a fixed position and can not be changed. In case it is a necessity to change the position, this should be discussed with, and approved (on paper) by TOBACCO Theatre. For more information about the light fittings, see the document showing a drawing of our lighting.

Additionally, it is possible to add extra material to the grid. However, this should be discussed and approved (on paper) by TOBACCO theatre.

TECHNICAL SPECIFICATIONS

GRAND THEATRE HALL

Video specifications:

Projector (main):	1x Barco RLM-W12 WUXGA 3-chip DLP projector The light output ratio is 11.500 ansi lumen Projector is hanging from the grid in the middle of the room.
Projectionscreen:	1x Stumpfl Magnum 6m electrical screen providing 16:9 A.R. imagery. 4:3 A.R. is not screenfilling. The projectionscreen is hanging behind/above the stage.
Side-wall projections:	On request: 2x Panasonic VZ570EJ LCD projector 4800 ansi lumen
Presentation screen: (cheat screen)	On request: 1x Philips 27 inch LED display Full HD IPS (black case included)
Video controls:	1x Barco/Folsom PDS902-3G switch/scaler 1x Philips 17 inch LCD previewdisplay
Laptop:	1x Apple Macbook Pro 13 inch retina- SSD (Office-PVP)
Presentation tools:	1x DSAN Perfect Cue mini (presentation switch) (2x presentation switch including laser, 1x receiver)

Loading & unloading: Loading and unloading is only permitted between 08:00 and 23:00 at the front door on Nes 75. Note: The Grand Theatre Hall is only reachable via the stairs (seven steps).

Stage specifications:

Stage 4m x 3m:	Standard set-up 4m in length x 3m in width x 40cm in height Lining with black ballet floor
Stage 6m x 3m:	On request: 6m in length x 3m in width x 40cm in height Lining with black ballet floor
Stage 8m x 3m:	On request: (maximum possible range) 8m in length x 3m in width x 40cm in height Lining with black ballet floor

We advise the height of the podium to be 40cm for the purpose of a good videoprojection.

Theaterzaal specifications:

Sizes:	15m x 13m x 5,5m (LxWxH) 5,5m is the height measured from the floor to the grid
Powercapacity:	1x 32A CEE connection left side of the stage 1x 32A CEE connection above the technical control panel
Hoogwerker: (Alplift).	TOBACCO Theatre is in possession of a basket lift In agreement you are able to use this.
Not permitted:	Use of confetti, pyrotechnique and unflammable decorations. Streamers are permitted when discussed with TOBACCO Theatre.

Damage or loss: The client is responsible for any loss and/or damage and will be charged with the costs.

TECHNICAL SPECIFICATIONS

GRAND THEATRE HALL

Prices technique TOBACCO Theatre

Light and sound (standard):	Sound and 2x handheld microphone Light (total set-up) Stage 4m x 3m x 40cm Costs: € 595,00 excl VAT
Video (standard):	Projector 11.500 ansi lumen Screen 16:9 A.R. 6m in length Apple Macbook Presentation switch incl. laser Costs: 375,00 euro excl. VAT
DJ set (standard):	DJ booth/furniture 2x Pioneer CDJ2000NXS 1x Pioneer DJM900 1x QSC K8 active DJ monitor on tripod Kosten: 325,00 euro ex btw
Technicians:	Allround technician: € 42,50 euro excl. VAT an hour (minimum of 4 hours, maximum of 10 hours) Sound technician: € 500 euro excl. VAT per day (maximum of 10 hours) Lightoperator: 500 euro excl. VAT per day (maximum of 10 hours)

Prices above are including parking and travelcosts.

Additional technical possibilities*:

Sound:	Wireless handheld microphone:	€ 75,00
	Wireless headset microphone:	€ 85,00
	Monitor (per 2, incl. amplifier):	€ 175,00
	Catchbox including microphone: (extra interaction with the public)	€ 175,00
	Extra Pioneer CDJ2000NXS:	€ 85,00
	Additional sound	on request
Light:	Chandelier Large 125cm x 145cm (WxH)	€ 375,00
	Chandelier Medium 105cm x 90cm (WxH)	€ 275,00
	Additional light	on request
Video:	Projections on side-walls per beamer	€ 95,00
	Cheat Screen on stage	€ 95,00
	Additional video	on request
Stage:	6m x 3m x 40cm in black	€ 175,00
	8m x 3m x 40cm in black	€ 250,00

*Prices mentioned above are excluding VAT, but include the costs for labour and transport.

**Besides the standard possibilities, we are able to provide you with a lot more technique. We work closely together with a couple of suppliers hence making it possible to provide you with all different kinds of technical equipment. Therefore, are you looking for a specific item, please do not hesitate to ask.

TECHNICAL SPECIFICATIONS STUDIO

Sound specifications:

- Mixer:** 1x Dateq Crew 7 channel mixer (19 inch rack applied to the wall)
- Speakers:** 6x JBL Control 25
1x JBL SB-2 Sub
- Amplifier:** 1x Crown XLS2000
- Microphone:** 1x AKG WMS wireless handheld microphone

Light specifications:

- Walls:** 18x CLS Pixelbar tri-colore, geintegreerd in plint
- Operations:** 1x Showtec Easy16 DMX (19 inch rack applied to the wall)

Video specifications:

- Projector:** 1x Panasonic VZ570EJ LCD projector 4800 ansilumen
- Screen:** No screen. It is a direct projections on a white wall.
(maximum width approximately 3,8m, 16:9 A.R.)
- Operations:** on request
Standard possibilities to connect a laptop via VGA or HDMI next to the screen projection.

Besides the details mentioned above, we are able to provide you with a lot more as regards to the technique. Therefore, are you looking for a specific item, please do not hesitate to ask.



HOW TO REACH US

TOBACCO Theater is easy to reach by public transport and walking. From Amsterdam Central Station it is a fifteen minute walk to our location on the Nes. From the 'Stationsplein', the big square in front of the Central Station, you can walk via the Damrak to Damsquare. Behind the National monument you can find the Nes. At the beginning of the Nes is a souvenir shop, with a big yellow clog in front of the door during the day. When you walk into this street, TOBACCO Theater is on your left hand side at number 75. Do you prefer traveling by tram? Take tram 4, 14, or 24 and exit at the stop called 'Rokin'. Tram 2 and 11 will bring you to the stop called 'Spui'. Another way to reach TOBACCO Theater is by taking metro 52 towards 'Zuid'. Metro 52 also travels to and from the RAI and Station Amsterdam Zuid. For alternative options you can visit www.9292ov.nl

By Car

You can reach TOBACCO Theater within twenty minutes from the Rondweg A10. It is possible to stop with a car in front of the venue.

If you want to park your vehicle, you can contact us. Parking tickets can be purchased through the organisation of the event at TOBACCO Theater. Note: it is not possible to purchase your parking tickets at TOBACCO Theater individually. We provide parking tickets for the following parking garages:

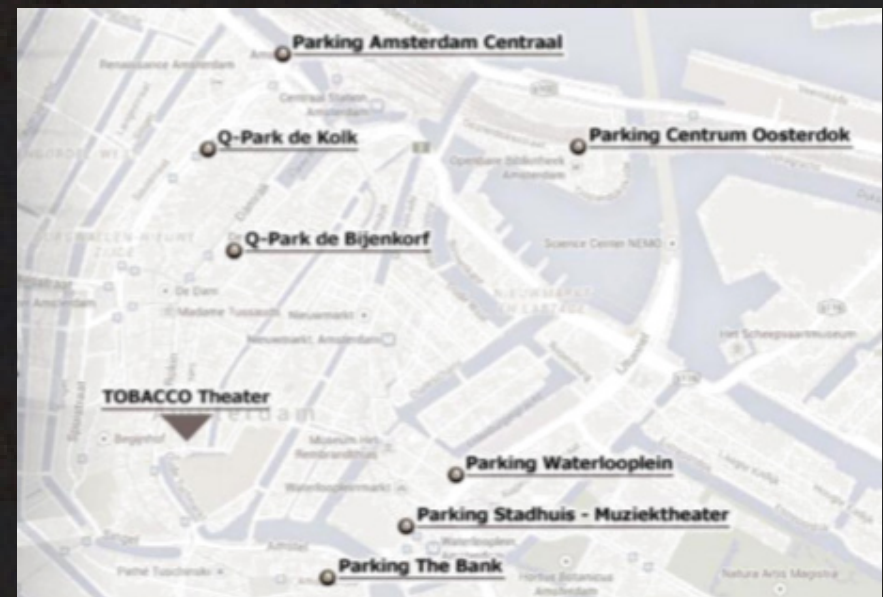
P1 parkeergarage Waterlooplein

A 24-hour parking card for this parking garage will cost €21,00. With this card you can park your vehicle within ten minute walk from our venue. The parking tickets need to be ordered ten days before the date of the event, please make sure you communicate the amount of parking cards you would like to order. You can communicate this to the contact person from the organisation of the event, who can communicate this to the right contact person within TOBACCO Theater.

Parkeergarage Bijenkorf (Q-park)

From Monday until Friday you can park your car or vehicle within a five minute walk from our venue. The parking cards need to be ordered five working days before the date of the event. There are three different types of parking cards you can order:

4 hours (€19,00)
6 hours (€26,00)
24 hours (€39,00)



CANCELING & INFO

Cancellation (partially) renting the theater:

- For reservation of one or more areas TOBACCO Theater you will receive a confirmation. After you signed this, cancelling the space(s) is no longer possible.

Cancellation food, beverages, technics and personnel:

- When you cancel (in writing) two months or more before your event, you pay 25% of the confirmed fee.
- When you cancel (in writing) one month or more before your event, you pay 50% of the confirmed fee.
- When you cancel (in writing) 14 days or more before your event, you pay 75% of the confirmed fee.
- When you cancel (in writing) on the day of your event to 13 days before the execution date, you pay 100% of the confirmed fee.

Damage:

- Damage to the TOBACCO Theater is always charged. TOBACCO Theatre will have a professional party repair the damage and costs by taxing.

Setup:

- For your setup we use our industrial furniture: 30 large tables (120x80 cm), 12 small tables (80x80 cm), 240 chairs and five barrels as high standing tables. On request we can hire other furniture for you. These costs are budgeted separately.
- Please inform us about the set-up no later than five working days before the event.

Lighting:

- the additional electricity costs will be charged when using customize technics or three phase electric power.
- During the event the basic lighting can be used (spot on stage, ceiling spotlights, LED ceiling and wall lights). Light in the grid is not connected and not included in the standard price of The Theater Hall.
- If you want to adjust the lighting to your liking this should always be done in consultation with our technician. The technician can be hired for a minimum of 4 hours. Extra light is budgeted separately.

Sound:

- TOBACCO Theatre has a noise limit of 90db

Devices:

- There is a laptop available for the projector, using packet 2. The image processor accepts different kinds of connection points and resolutions on your laptop (VGA, DVI, HDMI). If you are using an Apple, you should indicate this in advance concerning with the connections.



FAIRTRAD

TOBACCO Theatre is one of the locations that helps the municipality of Amsterdam with it's title Fairtrade Council.

INFO SPACES

THE THEATER HALL

Capacity per setting

Group standing/reception/walking dinner:	500
Theater setting:	350
Dinner including balcony:	264
Dinner excluding balcony:	240
Dinner round tables including balcony:	184
Dinner round tables excluding balcony:	160
Tables in U-shape:	75
Cabaret:	100
Classroom:	120

WIFI:	available
WIFI Password secured:	YES on request
Internet speed:	68MB
Livestream possible:	YES
Wheelchair accessible:	YES
Daylight:	YES
Dimming possible:	YES

Expanding Technics

The technics of TOBACCO Theater are facilitated by Smits Light & Sound. The various lighting packages can be found in the page Technics. If you want to bring in your own technician, this is possible. However, a technician of Smits Light & Sound has to be present at all times.

BALCONY AND LODGE

Capacity per setting

Group standing/reception/walking dinner:	60
Theater setting:	15
Dinner:	40
Boardroom:	10

WIFI:	YES
WIFI Password secured:	YES on request
Internet speed:	68MB
Livestream possible:	YES
Wheelchair accessible:	NO
Daylight:	YES
Dimming possible:	YES

Standard Technics:

Sound system
Flipover
Plasma screen in the Lodge
Projector:

€ 175,00 excluding tax.

INFO SPACES

THE STUDIO

Capacity per setting

Group standing/reception/walking dinner:	people 100
Theater setting:	80
Dinner round tables:	50
Tables in U-shape:	36
Cabaret:	40
Classroom:	50

WIFI:	YES
WIFI Password secured:	YES on request
Internet speed:	68MB
Livestream possible:	YES
Wheelchair accessible:	YES
Daylight:	YES
Dimming possible:	YES on request
Individual pantry and bathrooms	YES

Standard Technics

Sound system	
1 wireless mic	
Stage 2 x 1 (if requested)	
Projector:	€ 175,00 excluding tax.
Three phase electric power: if requested, in combination with the Theatre	

THE BANK'S SECRET

Capacity per setting

Group standing/reception/walking dinner:	people 50
Theater setting:	40
Dinner:	30
Dinner at round tables:	30
Boardroom:	20
Cabaret:	20
Classroom:	20

WIFI:	YES
WIFI Password secured:	YES on request
Internet speed:	68MB
Livestream possible:	YES
Wheelchair accessible:	YES
Daylight:	YES
Dimming possible:	YES on request

Standard Technics

Sound system	
Flipover	
Projector:	€ 175,00 excluding tax.
Three phase electric power: if requested, in combination with the Theatre	

INFO SPACES

THE FOYER

Capacity per setting

Group standing/reception/walking dinner:	people 50
Theater setting:	40
Dinner:	30
Dinner at round tables:	30
Boardroom:	20
Cabaret:	20
Classroom:	20

WIFI:	YES
WIFI Password secured:	YES on request
Internet speed:	68MB
Livestream possible:	YES
Wheelchair accessible:	YES
Daylight:	YES
Dimming possible:	YES on request

Standard Technics:

Sound system
Flipover
1 wireless microphone

Projector: € 175,00 excluding tax.
Three phase electric power: if requested, in combination with the Theatre.

THE RED DANGER

Capacity per setting

Group standing/reception/walking dinner:	people 40
Theater setting:	20
Dinner:	24
Dinner at round tables:	20
Boardroom:	10

WIFI:	YES
WIFI Password secured:	YES on request
Internet speed:	68MB
Livestream possible:	NO
Wheelchair accessible:	YES
Daylight:	NO

Standard technics:

Sound system
Flipover
Projector:

€ 175,00 excluding tax.

INFO SPACES

THE WINE CELLARS

Capacity per setting

Group standing/reception/walking dinner:	people 50
Theater setting:	30
Dinner:	48
Dinner at round tables:	30
Boardroom:	18

WIFI:	YES
WIFI Password secured:	YES on request
Internet speed:	50MB
Livestream possible:	NO
Wheelchair accessible:	YES
Daylight:	some

Standard Technics:

Sound system

Flipover

Projector:

€ 175,00 excluding tax.

SETTING UP & WRAP UP

- On the day of your event you're welcome to set up from 9AM onwards. The costs for a location manager will be charged.
- Setting up and wrap up is also possible between 11PM and 8AM. Loading and unloading is prohibited during this time. The costs for a location manager will be charged from 2AM onwards.
- Setting up the day prior to the event, is possible but is to be discussed. The rent will be charged. The location manager and minimum bar turnover are not charged.
- Setting up the technics is included in the budget. When the technics you want change, the budget will be adjusted.
- Consumptions during setting up and closing off are charged to your bill.
- Use of the Alp elevator is to be discussed.
- Using the Access elevator for materials is to be discussed. Damage to the elevators will be charged to your bill.
- Damage done during setting up or wrap up will be charged to your bill.
- **Loading and unloading is only allowed between 8AM and 11PM. Loading is only allowed from the Nes 75 entrance.**

Other:

- TOBACCO Theater has a noise limit of 90 decibel until 11PM, after 11PM the limit is 89 decibel.
Decibels are measured with our official measuring device.
- There is always a location manager present during the event.
- The use of confetti is not allowed in our theater. Damage and cleaning costs are charged to your bill.
- It is prohibited to attach objects to the walls without permission.

RATES

LOCATIE

Entire TOBACCO Theater*	€ 4.650,00
The Theater Hall*	€ 2.995,00
Reception	Included
Balcony & Lodge	Included
Wardrobe	Included
Dressing rooms	Included
The Studio*	€ 595,00
The Bank's Secret*	€ 395,00
The Studio + The Bank's Secret*	€ 895,00
The Foyer*	€ 395,00
The Red Danger*	€ 295,00
The Wine Cellars*	€ 375,00
Professional Kitchen incl. Scullery*	€ 950,00

Location manager (per hour)	€ 42,50
Location manager (per hour between 2AM and 7AM)	€ 75,00
Staff (per person per hour**)	€ 29,50
Security / Host at the door (per person per hour)	€ 37,50
Toilet lady	€ 25,00

For an extra day setting up we charge just the rent. The location manager is included in this price.

* Including: Wardrobe and Dressing Rooms

** 1 hour before the event starts and 1 hour afterwards are added to your bill

CATERING *(rates are per person)*

Cava at entrance	€ 6,50
Champagne at entrance	€ 9,50
Cocktail (from)	starting at € 7,50
Coffee, tea, soft drinks - 1 daypart	€ 9,50
Coffee, tea, soft drinks - 2 dayparts	€ 17,00
Buy off Dutch bar - 1 hour	€ 7,50
Buy off Dutch bar - 4 hours	€ 29,00
Wine arrangement - 3 courses, per course 1 wine	€ 19,50
Breakfast	starting at € 9,50
Lunch	starting at € 19,50
Amuse	starting at € 3,75
Buffets	starting at € 37,50
Walking dinner	starting at € 36,00
Three-course dinner	starting at € 36,00

When using the kitchen with your own caterer you pay the rent for the kitchen and an additional 10% catering fee.

THEATRE DINNERS

Putting on the Ritz

Technics & direction	€ 1.250,00
150 people or more - per person	€ 79,50
100 - 149 people - per person	€ 89,50
80 - 99 people - per person	€ 97,50

La Folie

150 people or more - per person	€ 69,50
100 - 149 people - per person	€ 79,50
80 - 99 people - per person	€ 89,50

TECHNICS PACKAGES

Technical set-up when use of standard technique	€ 95,00
Technical set-up when use of extra material	on request
Sound, light and stage, as mentioned in the specifications	€ 595,00
Projector, screen 16:9, Mac book and presentation switch including laser	€ 375,00
DJ Set	€ 325,00
DJ (4 hours)	€ 475,00
Allround Technicus (minimum of 4 hours)	€ 42,50
Sound technicus, price of full day (max 10 hours)	€ 500,00
Light operator, price of full day (max 10 hours)	€ 500,00