



NINE ADAM STREET

THE STRAND • LONDON WC2

ADAM STREET WC2

TO LET

THE STRAND



HEART

THE HEART OF THE STRAND

“An Exclusive Blank Canvas Space”

Designed by Robert Adams, this brand new exclusive event space is ideally located in the middle of The Strand. Finished to a high standard and just off the main street, this venue has the perfect balance of a modern contemporary blank canvas venue.

With beautiful exposed brickwork, the space comprises of 2 spacious floors accommodating up to 250 people standing. This venue features 2 arches, 2 breakouts, 1 VIP area, a reception area, a kitchen space and a private entrance for VIPs.

This venue is a dry hire space meaning there is the possibility to dress and completely transform the space into whatever suits your brief.

Nine Adam Street is a flexible and diverse space perfect for product launches, drink receptions, press days, Christmas parties, experiential activity, private parties, wedding receptions, after-parties, exhibitions and much more.



UNIQUE

WHY IS NINE ADAM STREET UNIQUE?

250 Capacity

Late Premises License

Beautiful Exposed Brickwork

Separate VIP Room

3 Phase Power

Bar In Main Space

Very Close Transport Links

Flexible and Versatile

Kitchen Space

Loading Entrance



HERE TO HELP

THINGS YOU NEED TO KNOW

Here are the answers to a few frequently asked questions:

Damage Deposit

We will hold a damage deposit for every event – the value will vary depending on the activity itself and length of hire. We will conduct pre and post event venue checks with you to catalogue any damages. If there are no damages caused, the deposit will be returned to you in full 7 days after the hire period ends.

Payments

All fees are payable in full prior to access on site. Upon confirmation we will invoice for 50% of the hire fee. All other charges are due at least one month prior to the first day of the hire period.

Health & Safety

All venue hirers will be required to provide Health & Safety documentation for their event.

Advertising & Promotion

All venue hirers must submit advertising and promotional material in relation to their event for landlord approval in advance of release to the public domain.

If you have any further queries, please do contact the Events Team.





Permissions

The venue is licensed until 03:30. For later finishing times please speak to a member of staff for various options.

Health & Safety

All venue hirers will be required to provide Health & Safety documentation for their event. The use of smoke and haze machines is prohibited inside the venue



Advertising & Promotion

All venue hirers must submit advertising and promotional material in relation to their event for landlord approval in advance of release to the public domain. If you have any further queries please do contact the Events Team.



VENUE SPECIFICATIONS

TAILOR THE VENUE TO YOUR NEEDS

Space	5,000 sq ft (total space) 250 Guests*
Power	3 Phase Available
Kitchen	Space for catering equipment (with extraction)
Green Room	Yes
Toilets	Yes
Cloakroom	Yes
Loading Outside	Yes**

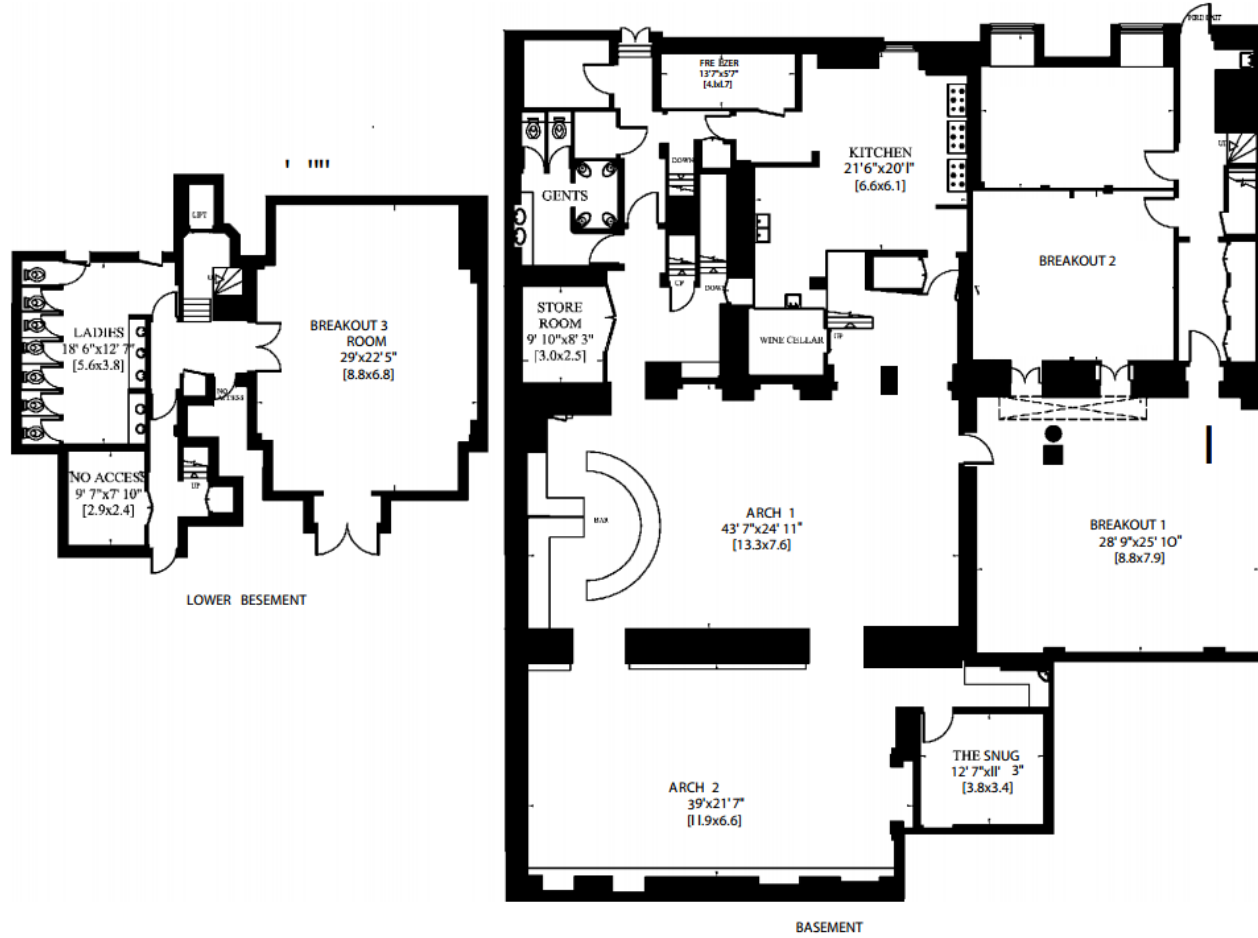
**NB: Subject to event layout & production*

*** Delivery schedules are required 72 hours prior to access to avoid potential loading/unloading restrictions*



FLOOR PLAN

OVERVIEW OF NINE ADAM STREET



COSTS

OVERALL SUMMARY

Room Hire (Whole Venue)	£5,500+VAT/Whole Day
Arch 1 & Arch 2	From £250+Vat per hour
Security & Cleaning	A bespoke quote can be provided tailored to your event
Access Times	Monday – Sunday 09:00am – 01:00am
Additional Costs	Security Catering Cleaning All costs are plus VAT

For event space booking cancellations must be made no later than 14 days before the booking, or the full cost of room hire or deposit will be charged.



PREVIOUS EVENTS

NINE ADAM STREET IN ACTION

NINE ADAM STREET DRY HIRE ADVERT

<https://www.youtube.com/watch?v=ZGsjlwPGVJE>

EVENT SHOWREEL VIDEO

<https://www.youtube.com/watch?v=8Dq1zGoWwpl>

NINE ADAM STREET LAUNCH PARTY

https://www.youtube.com/watch?v=_j5dM4Ebzyk

Thanks to Blank Canvas



LOCATION & TRAVEL

HOW TO FIND US

Venue Address

9 Adam St
London
WC2N 6AA

By Tube

Embankment (Northern & Bakerloo Lines)
(2min walk)
Leicester Square (Northern & Piccadilly Lines)
(8min walk)
Temple (Circle & District Lines)
(7min walk)

By Bus

Numbers 6, 9, 11, 13, 15, 23, 87, 91, 139, 176, N9, N11, N13, N15, N21, N26, N44 & N47 stop near the venue on The Strand at stops J & A.

By Car

The venue is in the Congestion Zone.
There is a car park at:
Savoy Adelphi Car Park
Savoy Adelphi Garage
Savoy Place
London WC2N 6BL

