



E V E N T S   &   P R I V A T E   D I N I N G

## OUR VENUES

**CHUCS MAYFAIR**  
30 DOVER STREET  
MAYFAIR, LONDON, W1S 4NB

**CHUCS WESTBOURNE GROVE**  
226 WESTBOURNE GROVE  
NOTTING HILL, LONDON, W11 2RH

**CHUCS HARRODS**  
THE FINE WATCH DEPARTMENT, HARRODS  
DOOR 11, HANS ROAD, KNIGHTSBRIDGE, SW1X 7XL

**CHUCS CAFE, SERPENTINE**  
THE SERPENTINE SACKLER GALLERY  
WEST CARRIAGE DRIVE, LONDON, W2 2AR

**CHUCS SAINT-TROPEZ**  
ECOLE DE VOILE DES CANOUBIERS  
35 CHEMIN DE L'ESTAGNET, SAINT-TROPEZ, 83990



## WELCOME TO CHUCS

**SINCE THE LAUNCH OF THE ORIGINAL AND MUCH-ACCLAIMED CHUCS MAYFAIR IN 2014, THE CHUCS RESTAURANT COLLECTION HAS EXPANDED TO OTHER ICONIC LOCATIONS ACROSS LONDON & EUROPE.**

THE ORIGINAL CHUCS ON DOVER STREET - JUST A STONE'S THROW FROM THE EXCLUSIVE BERKELEY SQUARE - IS THE PERFECT LOCATION FOR AN INTIMATE LUNCH OR DINNER, WITH ITS WORLD-CLASS SERVICE AND CUISINE.

CHUCS WESTBOURNE GROVE, NESTLED IN THE HEART OF NOTTING HILL, OPENED ITS DOORS IN FEBRUARY 2016. THIS NEIGHBOURHOOD STALWART, WHICH BOASTS A LIGHT-FLOODED BAR & TWO IMPECCABLE DINING ROOMS, ALSO ENCOMPASSES A DISCREET GARDEN TERRACE FEATURING A LARGE BRICK FIRE PLACE - A PERFECT SPOT TO ENTERTAIN EVEN IN THE WINTER MONTHS.

CHUCS HARRODS, LOCATED IN THE FINE WATCH DEPARTMENT OF THE WORLD-RENOWNED DEPARTMENT STORE, OPENED IN FEBRUARY 2018. WITH ITS OWN EXCLUSIVE ENTRANCE ON HANS ROAD, THE RESTAURANT CAN BE ACCESSED EVEN WHEN HARRODS' DOORS CLOSE, PROVIDING THE PERFECT LOCATION FOR A LOW-KEY EVENT IN KNIGHTSBRIDGE.

CHUCS CAFE AT THE SERPENTINE FOLLOWED IN APRIL 2018, SET WITHIN ZAHA HADID'S LANDMARK 'MAGAZINE' EXTENSION TO THE SACKLER GALLERY. SURROUNDED BY THE VERDANT HYDE PARK & KENSINGTON GARDENS, THE VENUE AFFORDS ITS GUESTS A SENSE OF PRIVACY & TRANQUILLITY, IN SPITE OF ITS CENTRAL LONDON LOCATION.

SUMMER 2018 SAW THE LAUNCH OF CHUCS SAINT-TROPEZ, A LUXURY BEACH CLUB ACCOMMODATING 150 GUESTS, LOCATED ON THE BREATHTAKING CANOUBIERS BEACH.

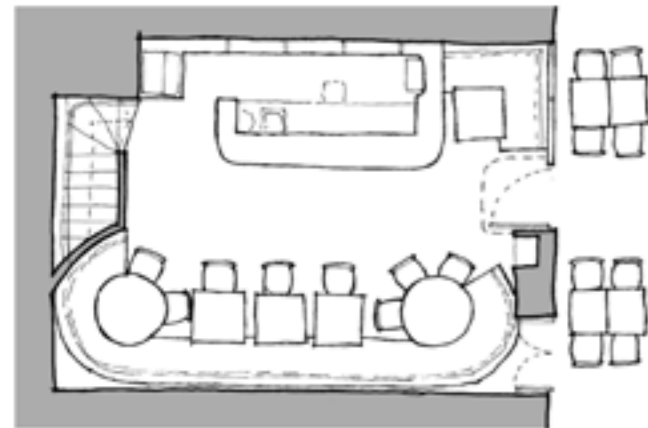
2019 WILL SEE THE LAUNCH OF TWO NEW CHUCS CAFES IN KENSINGTON & CHELSEA, AS WELL AS A FOURTH RESTAURANT IN BELGRAVIA.

THE CHUCS RESTAURANT & CAFE COLLECTION SPECIALISES IN MODERN EUROPEAN CUISINE INCLUSIVE OF MANY LIGHT & HEALTHY OPTIONS. OUR TEAM IS COMMITTED TO SOURCING & PREPARING DISHES OF THE HIGHEST QUALITY, SERVED IN EXQUISITE SETTINGS. OUR NEW CAFES WILL BE OPEN FOR BREAKFAST, LUNCH & DINNER, SEVEN DAYS A WEEK, OFFERING A HIGH-QUALITY FULL SERVICE CAFE MENU ALONGSIDE TAKEAWAY OPTIONS, INCLUDING PASTRIES, PANNINIS, SALADS, JUICES, SMOOTHIES & COFFEE.

# CHUCS MAYFAIR

STANDING CAPACITY: 30

SEATING CAPACITY: 24



AVAILABLE FOR  
BREAKFAST, LUNCH, DRINKS,  
DINNER

**CHUCS MAYFAIR**  
30 DOVER STREET, MAYFAIR, LONDON, W1S 4NB



# CHUCS WESTBOURNE GROVE

STANDING CAPACITY: 100

SEATING CAPACITY: 86

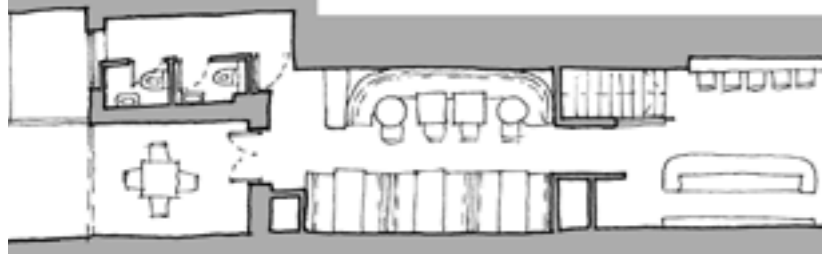
AVAILABLE FOR  
BREAKFAST, LUNCH, DRINKS,  
DINNER



**CHUCS WESTBOURNE GROVE**  
226 WESTBOURNE GROVE, NOTTING HILL, LONDON, W11 2RH

# CHUCS WESTBOURNE GROVE

**UPPER LEVEL**  
STANDING CAPACITY: 20  
SEATING CAPACITY: 26



AVAILABLE FOR  
BREAKFAST, LUNCH, DRINKS,  
DINNER



# CHUCS WESTBOURNE GROVE

**LOWER LEVEL**  
STANDING CAPACITY: 50  
SEATING CAPACITY: 40  
**GARDEN TERRACE**  
STANDING CAPACITY: 30  
SEATING CAPACITY: 20



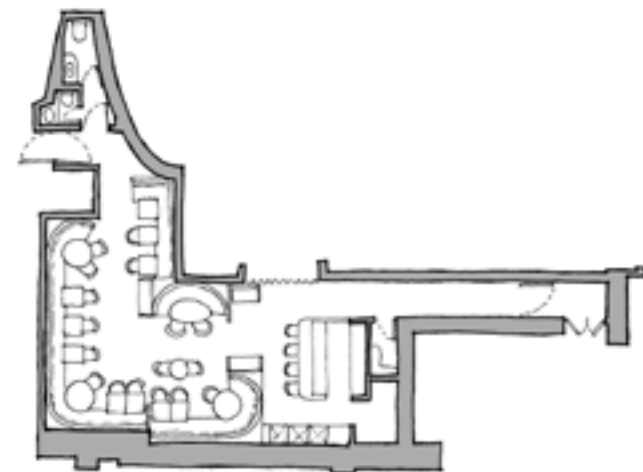
AVAILABLE FOR  
BREAKFAST, LUNCH, DRINKS,  
DINNER



# CHUCS HARRODS

STANDING CAPACITY: 60

SEATING CAPACITY: 44



AVAILABLE FOR  
BREAKFAST, LUNCH, DRINKS,  
DINNER

## CHUCS HARRODS

THE FINE WATCH DEPARTMENT, HARRODS  
DOOR 11, HANS ROAD, KNIGHTSBRIDGE, SW1X 7XL

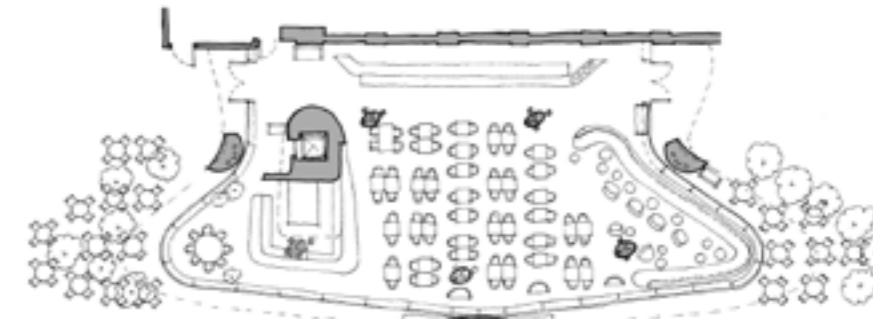


# CHUCS SERPENTINE

STANDING CAPACITY: UP TO 300

SEATING CAPACITY: 120

THEATRE STYLE: 140



AVAILABLE FOR  
BREAKFAST, LUNCH, DRINKS,  
DINNER

## CHUCS SERPENTINE

THE SERPENTINE SACKLER GALLERY  
WEST CARRIAGE DRIVE, W2 2AR



# BREAK OUT SPACE: THE SERPENTINE GALLERIES



# THE SERPENTINE SACKLER GALLERY

STANDING CAPACITY: UP TO 200

SEATING CAPACITY: AVAILABLE  
UPON REQUEST

DESIGNED BY PRITZKER ARCHITECTURE PRIZE LAUREATE ZAHA HADID, THE SERPENTINE SACKLER GALLERY OPENED TO THE PUBLIC IN SEPTEMBER 2013, BRINGING THE 1805 GRADE II LISTED FORMER GUNPOWDER STORE INTO PUBLIC USE FOR THE FIRST TIME IN ITS 208 YEAR HISTORY.

THE GALLERY CAN BE HIRED FOR BREAKFAST AND EVENING EVENTS DURING ITS FOUR SEASONAL EXHIBITIONS THROUGHOUT THE YEAR, PROVIDING A WONDERFUL ADDITIONAL SPACE FOR GUESTS TO ENJOY ALONGSIDE THEIR EVENT AT CHUCS SERPENTINE.

FOR THOSE INTERESTED IN LEARNING MORE ABOUT PARTICULAR EXHIBITIONS, TOURS CAN BE ARRANGED TO GIVE YOUR GUESTS FURTHER INSIGHT.

# THE SERPENTINE GALLERY & PAVILION

STANDING CAPACITY: UP TO 500  
SEATING CAPACITY: AVAILABLE UPON REQUEST



SITUATED JUST FIVE MINUTES' WALK FROM THE SERPENTINE SACKLER GALLERY, THE ORIGINAL SERPENTINE GALLERY AND ANNUAL SERPENTINE PAVILION ARE ALSO AVAILABLE FOR HIRE, WITH CHUCS ON HAND TO CATER FOR YOUR EVENT.



# CHUCS SAINT-TROPEZ

STANDING CAPACITY: 200  
SEATING CAPACITY: 150



AVAILABLE FOR BREAKFAST, LUNCH, DRINKS, DINNER

**CHUCS SAINT-TROPEZ**  
ECOLE DE VOILE DES CANOUBIERS  
35 CHEMIN DE L'ESTAGNET, SAINT-TROPEZ, 83990

## THE DETAILS

- PACKAGES INCLUDE A PERSONALLY TAILORED EVENT MANAGEMENT SERVICE FROM THE CHUCS EVENTS TEAM.
- BESPOKE MENUS, TO MEET YOUR NEEDS, CAN BE CREATED BY OUR CELEBRATED CHEFS.
- COMPLIMENTARY PRINTED MENUS & PLACE CARDS CAN BE PROVIDED.
- SECURITY, FURNITURE REMOVAL & TRAFFIC MANAGEMENT CAN BE ARRANGED AT AN ADDITIONAL COST.
- DRY HIRE PACKAGES ARE AVAILABLE.
- FOR EVENTS REQUIRING BESPOKE PRODUCTION, FLORISTRY & ENTERTAINMENT, WE WOULD BE DELIGHTED TO PROVIDE YOU WITH A LIST OF APPROVED INDUSTRY PROFESSIONALS UPON REQUEST.
- ALL CHUCS VENUES OPERATE ON A MINIMUM SPEND BASIS.
- A 12.5% SERVICE CHARGE WILL BE APPLIED TO YOUR FINAL BILL.
- ALL PRICES INCLUDE VAT.



## TESTIMONIALS



A BIG HEARTFELT 'THANK YOU' TO THE TEAM FOR PULLING TOGETHER AN AMAZING EVENING FOR ME. I HAD THE MOST WONDERFUL TIME AND THE MAGIC OF THE PLACE IS STILL WITH ME THREE DAYS LATER. I AM JUST COMING OFF MY HIGH.

C.P, LONDON

THANK YOU SO MUCH FOR ALL YOUR HARD WORK - IT WENT SO SMOOTHLY AND WAS A GREAT NIGHT! DELICIOUS FOOD AND DRINKS TOO, WE WERE VERY IMPRESSED!

WILL, PEMBROKE VCT

EVERYONE IS SO THRILLED; THANK YOU SO MUCH FOR ALL YOUR AMAZING HELP - SUCH A STRONG TEAM - EVERYTHING RAN SO SMOOTHLY! SUCH A PLEASURE WORKING WITH YOU!

IMOGEN, FINCH & PARTNERS

I JUST WANTED TO SAY A MASSIVE THANK YOU FOR ALL YOUR HELP LAST NIGHT. WE RECEIVED EXCELLENT FEEDBACK FROM THE VENUE TO THE FOOD TO THE LEVEL OF SERVICE SO THANK YOU TO YOU AND YOUR TEAM BOTH LEADING UP TO AND ON THE DAY OF THE EVENT. I LOOK FORWARD TO WORKING WITH YOU AGAIN IN THE NEAR FUTURE!

JOANNA, RBCCM





FOR MORE DETAILS ABOUT HOLDING YOUR EVENT AT CHUCS PLEASE CONTACT:  
E: [EVENTS@CHUCSRESTAURANTS.COM](mailto:EVENTS@CHUCSRESTAURANTS.COM) | T: +44 (0) 20 7766 3018

CHUCS MAYFAIR | CHUCS WESTBOURNE GROVE | CHUCS HARRODS | CHUCS CAFE SERPENTINE | CHUCS SAINT-TROPEZ

[WWW.CHUCSRESTAURANTS.COM](http://WWW.CHUCSRESTAURANTS.COM) | [@CHUCSRESTAURANTS](https://www.instagram.com/CHUCSRESTAURANTS)

