

Canvas London



02	About
04	Conferences
05	Product Launches & Experiential events
06	Photoshoots & Filming
07	Food & Drink
08	Floor Plans& Tech Specs
10	How To Find Us
11	Oval Green LGBTQ Policy
12	Contact Us



Canvas London is the latest project by the team behind two of London's foremost cultural institutions, Oval Space and The Pickle Factory.

This space has been designed as a blank canvas, set in an industrial but polished setting. The venue comprises of 3 unique areas, a sprawling, blank canvas main room, beautiful landscaped roof terrace with multi-purpose containers, and a brandable cocktail bar event space. The venue also features breakout rooms on the 1st floor.

The versatility and multi-faceted nature of Canvas London is bound to whet the appetite of any ambitious event producer, whether they're planning a product launch, conference or live music gig. Moreover, the venue can boast to be one of the most environmentally sustainable in the country, with a ban on single-use plastics the first step in 'Oval Green' a cross-venue initiative to create spaces that deliver unforgettable experiences minus the carbon emissions.



Conferences

Those requiring space for up to 200 guests in a theatre style set-up, a number of separate areas or breakout rooms; can all be accommodated through our teams unrivalled ability to tailor the space to your personal conference needs.

Canvas London features a beautiful roof terrace which works perfectly as a breakout area, or for post-work reception drinks.

Capacities

Theatre	200
Weddings and Christmas	90
Awards	110
Gig	300



Product Launches and Experiential Events

Whether making use of the large blank canvas space downstairs, plant ordained roof terrace or stylish cocktail bar, Canvas London is the perfect site for production-heavy experiential events and product launches. Every nook and cranny has been crafted with versatility in mind, and our on-site team of expert event producers and technicians make the most complex of briefs a reality.



Photoshoots and Filming

Fully equipped with a stunning roof terrace backdropped by Cambridge Heath's industrial landscape, 3 phase power, breakout spaces to use as hair and makeup areas, and an abundance of different natural light configurations, Gasswork Studios is fast establishing itself as a premiere space for location shoots and filming.



Food and Drink

A range of catering options are available upon request from our expert in-house team. We will assemble menus ranging from canapés to bowl food; hot buffets to cold and several-course sit-down meals.

We can offer an assortment of hot and cold beverages, with anything from barista coffee to bespoke cocktails themed around your event.



Floor Plan: Dimensions

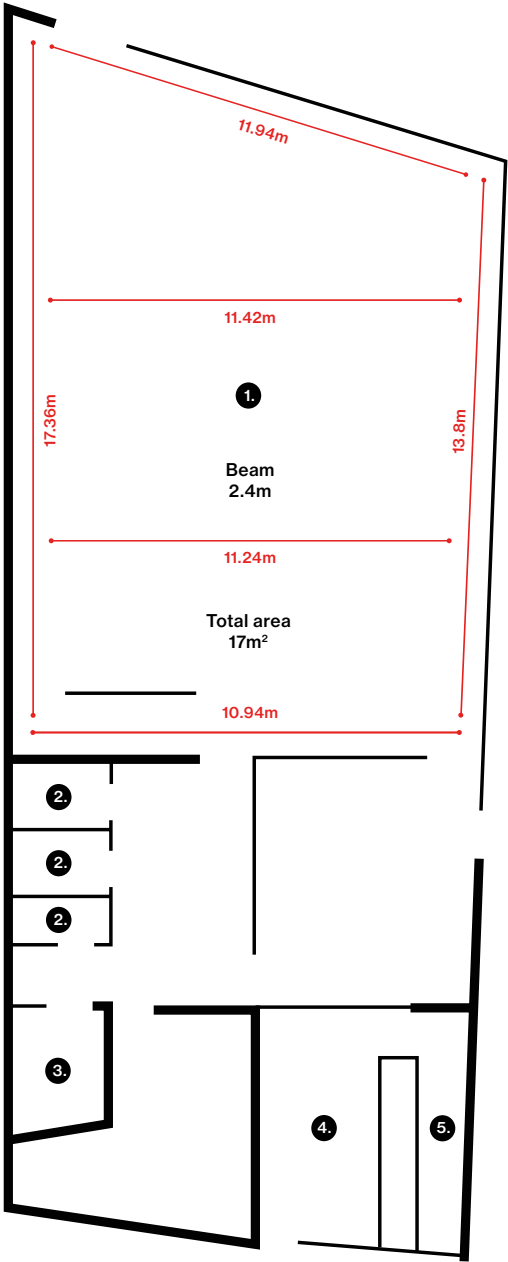
Ground Floor

- 1. Main Room
- 2. Toilets
- 3. Disabled Toilets
- 4. Cafe
- 5. Servery

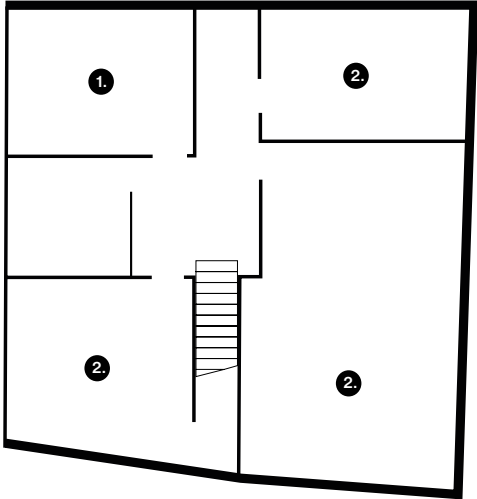
First Floor

- 1. Kitchen
- 2. Office

Ground Floor



First Floor



Technical Specifications

Canvas London features a wide range of state of the art facilities to accompany your event. For a sound / lighting package quote, please enquire with your contact at the venue. We can also provide equipment which is not listed here at a preferential rate.

AUDIO SPECIFICATION

PA System

RMS 215 Bass Module Ex Demo
PM8500N Powermatch 8 Channel
Amplifier
Bose CC-64 Wall control

Microphones

2 x Shure SM58

LIGHTING

Atmospherics

Ambient lighting, LED and dimmable



How To Find Us

Hotels In The Area

- **Town Hall Hotel:**
townhallhotel.com
- **The Hoxton:**
thehoxton.com
- **Ace Hotel:**
acehotel.com/london
- **The East London Hotel:**
theeastlondonhotel.com

Where To Eat

Bistrotheque, ££
(Dinner only Mon-Fri, brunch Sat-Sun)
23-27 Wadeson Street, London E2 9DR
T: 020 8983 7900
Upmarket loft-style brasserie and bar,
booking advised.

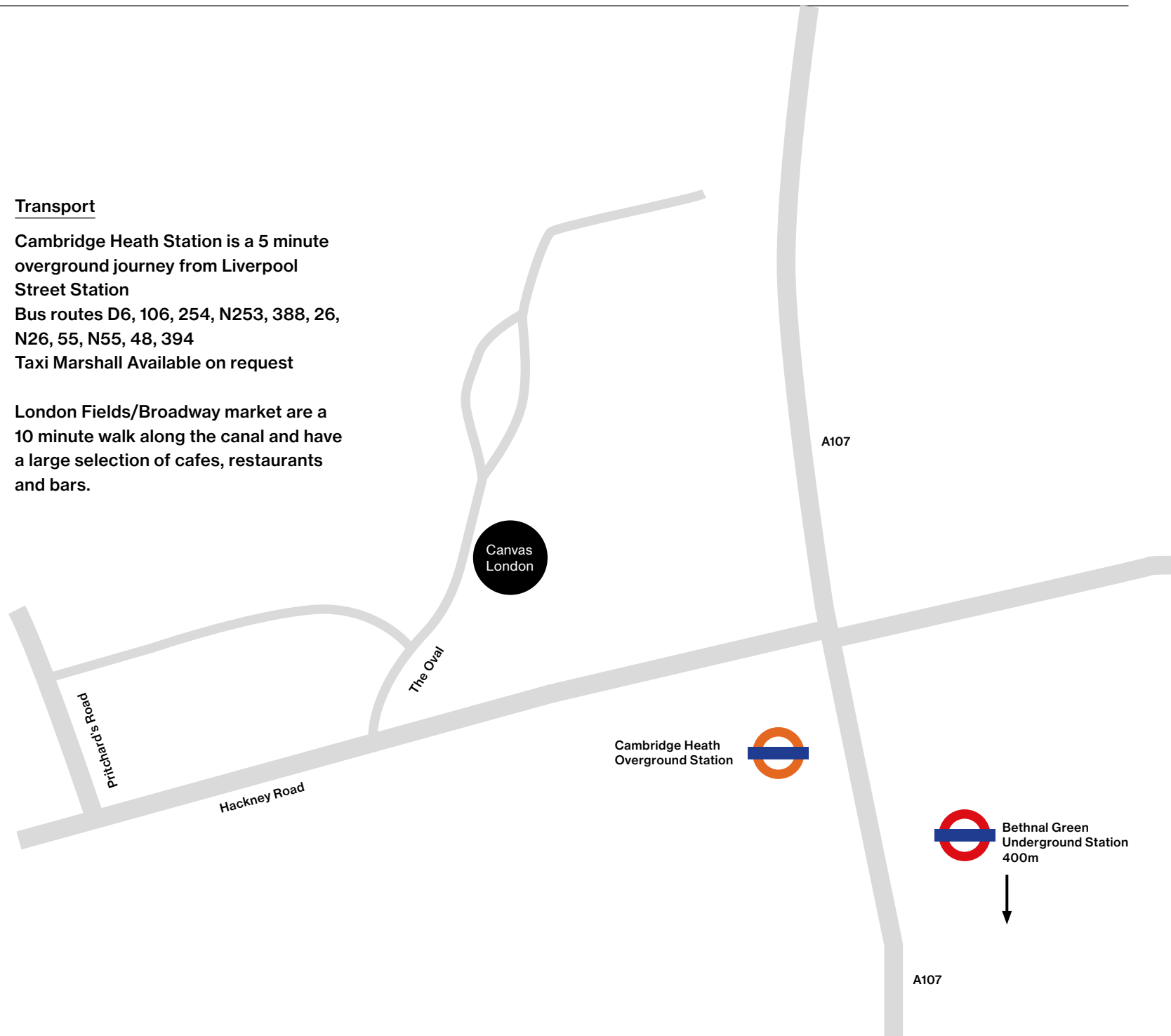
Morito, ££
(Lunch Tues-Sun, dinner Mon-Sat)
195 Hackney Road, London E 2 8JL
T: 020 7613 0754, www.morito.co.uk
Mediterranean / Tapas

Ombra Restaurant, £
(Informal lunch/dinner all days)
1 Vyner Street, London E2 9DG
T: 020 8981 5150
Venetian dishes and cicchetti

Transport

Cambridge Heath Station is a 5 minute
overground journey from Liverpool
Street Station
Bus routes D6, 106, 254, N253, 388, 26,
N26, 55, N55, 48, 394
Taxi Marshall Available on request

London Fields/Broadway market are a
10 minute walk along the canal and have
a large selection of cafes, restaurants
and bars.





Oval Green

Oval Green is a new initiative seeking to continually reduce the carbon footprint and wastage of Oval Space, The Pickle Factory and Canvas London. In a bold first step, all our venues will be the first in the UK to go single-use plastic free as of July 31st 2019, with further green measures ensuring that Oval Green creates a global blueprint for running an environmentally responsible venue in the current climate emergency.

LGTBQ+ Policy

Please be advised that Oval Space operates a zero-tolerance policy on all forms of discrimination, prejudice or offensive behaviour, including but not limited to racism, sexism, homophobia, transphobia, xenophobia and ableism.

More Information

If you have any questions on disabled access within the venue, please contact dps@ovalspace.co.uk or call the events office on 020 7183 4422.

Contact Us

For all enquiries, contact our friendly team at dps@ovalspace.co.uk or call the events office on 020 7183 4422

Oval Space
29—32 The Oval
London, E2 9DT
ovalspace.co.uk
dps@ovalspace.co.uk
020 7183 4422

