

INNOVATIVE TEAM-BUILDING DAYS...

CREATIVE PHOTOSHOOTS...

VIBRANT LAUNCH EVENTS...

and OFFICE PARTIES WITH A TWIST!

it happened at the
**CHOCOLATE
FACTORY** 



VENUE SPACES

Looking for a room with something different for your meeting or training day, or maybe a quirky venue space for an awards night, photoshoot or office party?
Check out our variety of venue spaces at The Chocolate Factory...





Blas Café Space, Ground Floor

Standing capacity: 160 Seated capacity: 120

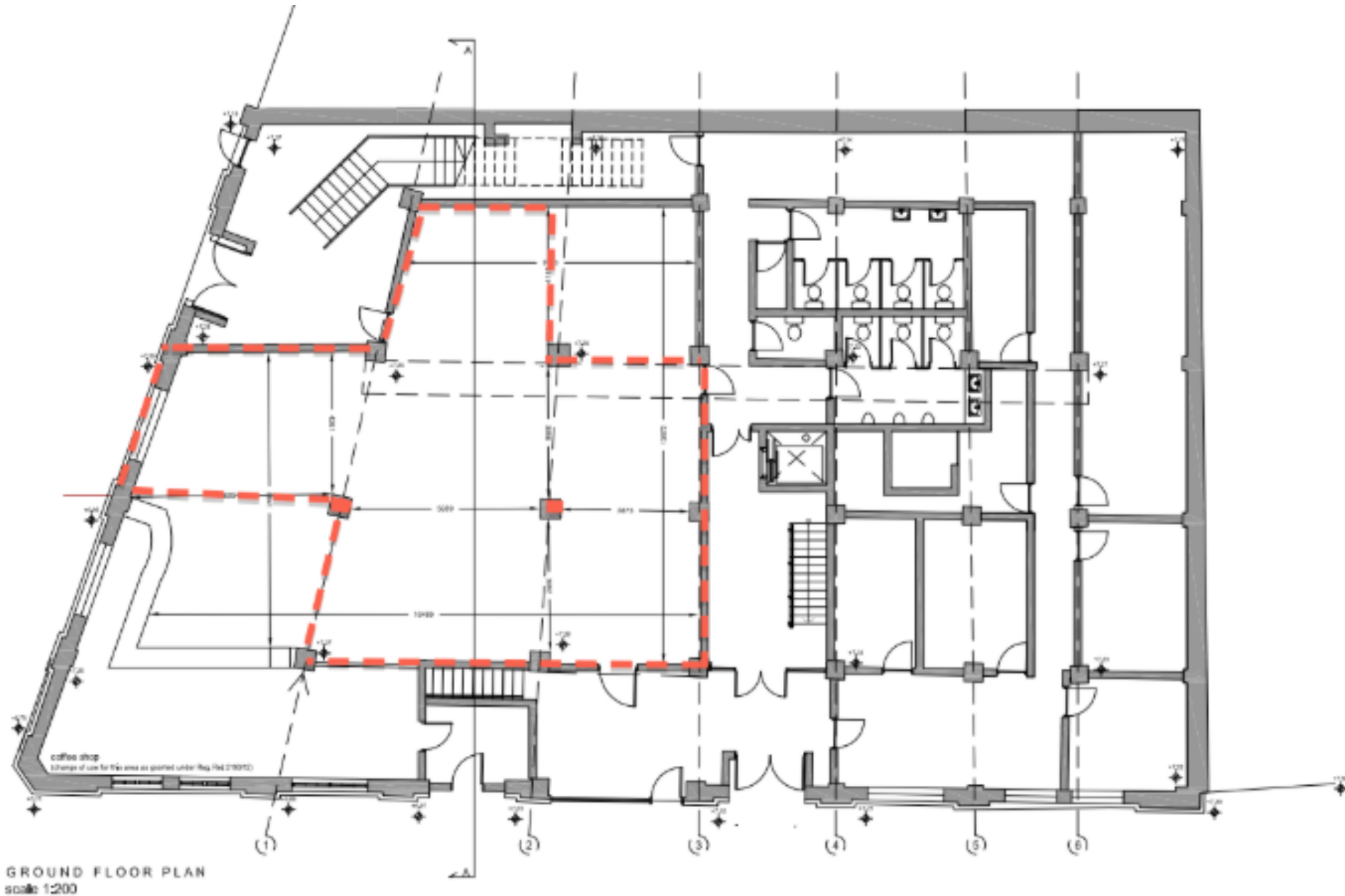
Perfect for parties, launches and evening events

Available for private hire from 4pm.

Hire rates dependent on catering and staffing requirements.

Get in touch with our team on events@greenshoosevents.com for more info!

Blas Café Floor Plan





First Floor Venue Space

Standing capacity: 220 Seated capacity: 180

Exclusive access to space (private event entrance).

Perfect for product launches, photo shoots, parties, conferences, networking events & much more!

Standard Rates (ex. VAT)

Half Day (4 hours before 4pm):	€500
Mon.-Fri. Daytime (8AM - 4PM):	€800
Sat. & Sun. Daytime (10AM-4PM)	€800
Evening (5pm - 11pm):	€1,000
Full Day (8AM - 11PM):	€1,500

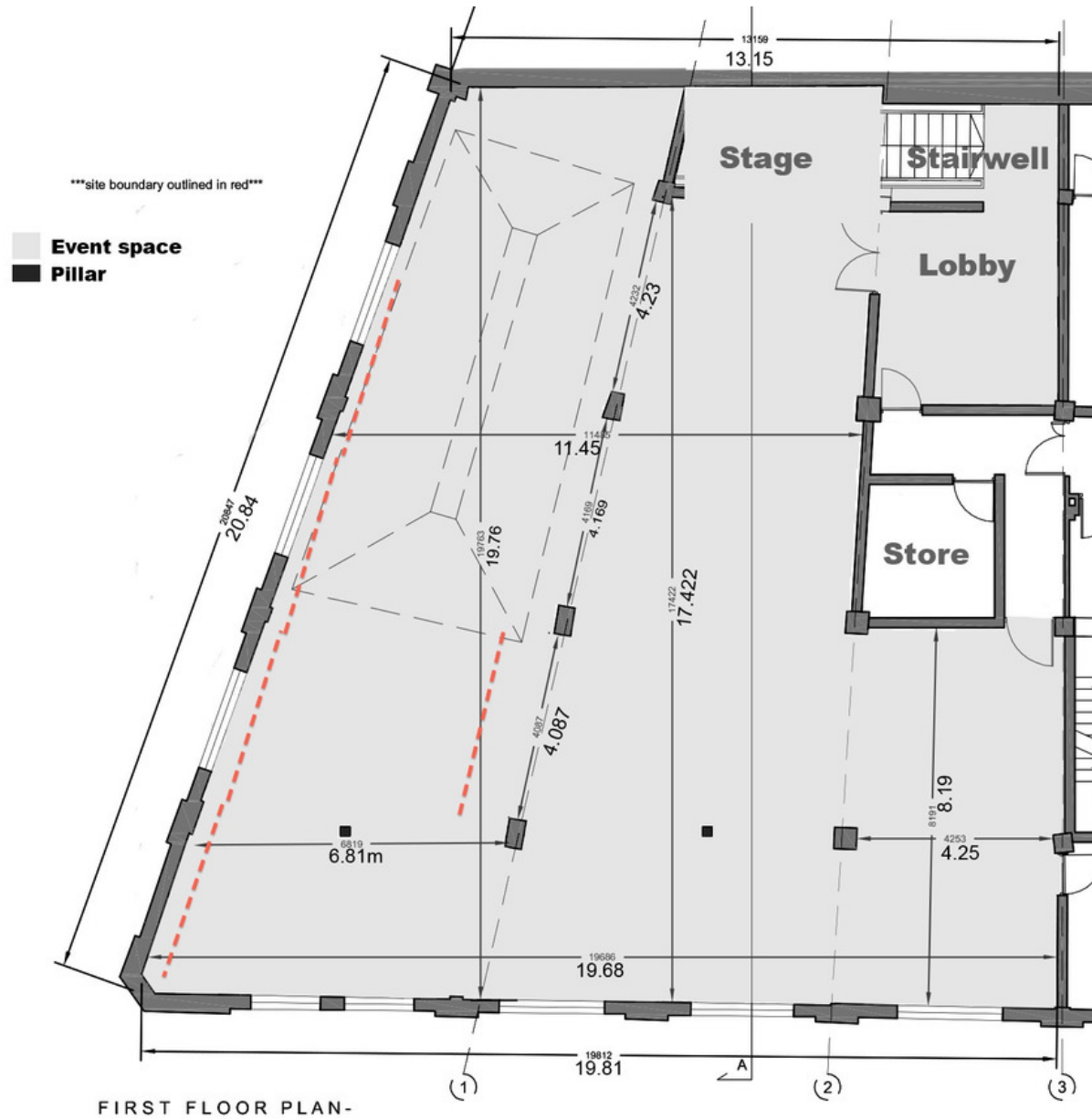
Additional Hours:	€100/hr
Security (from 4pm as building closed):	€25/hr

Artist/Non-Profit Rates (ex. VAT)

Half Day (4 hours before 4pm):	€300
Mon.- Fri. Daytime (8AM - 4PM):	€500
Sat. & Sun. Daytime (10AM-4PM)	€500
Evening (5pm - 11pm):	€750
Full Day (8AM - 11PM):	€1,000

Additional Hours:	€100/hr
Security (from 4pm as building closed):	€25/hr

First Floor Venue Floor Plan





First Floor Studio

Capacity exercise class: 30 Seated capacity: 60

Perfect for break-out sessions, training days, networking events,
workshops & seminars

Standard Rates (ex. VAT)

Hourly:	€50
Half Day (4 hours before 4pm):	€175
Mon.- Fri. Daytime (8AM - 4PM):	€300
Sat. & Sun. Daytime (10AM-4PM)	€300

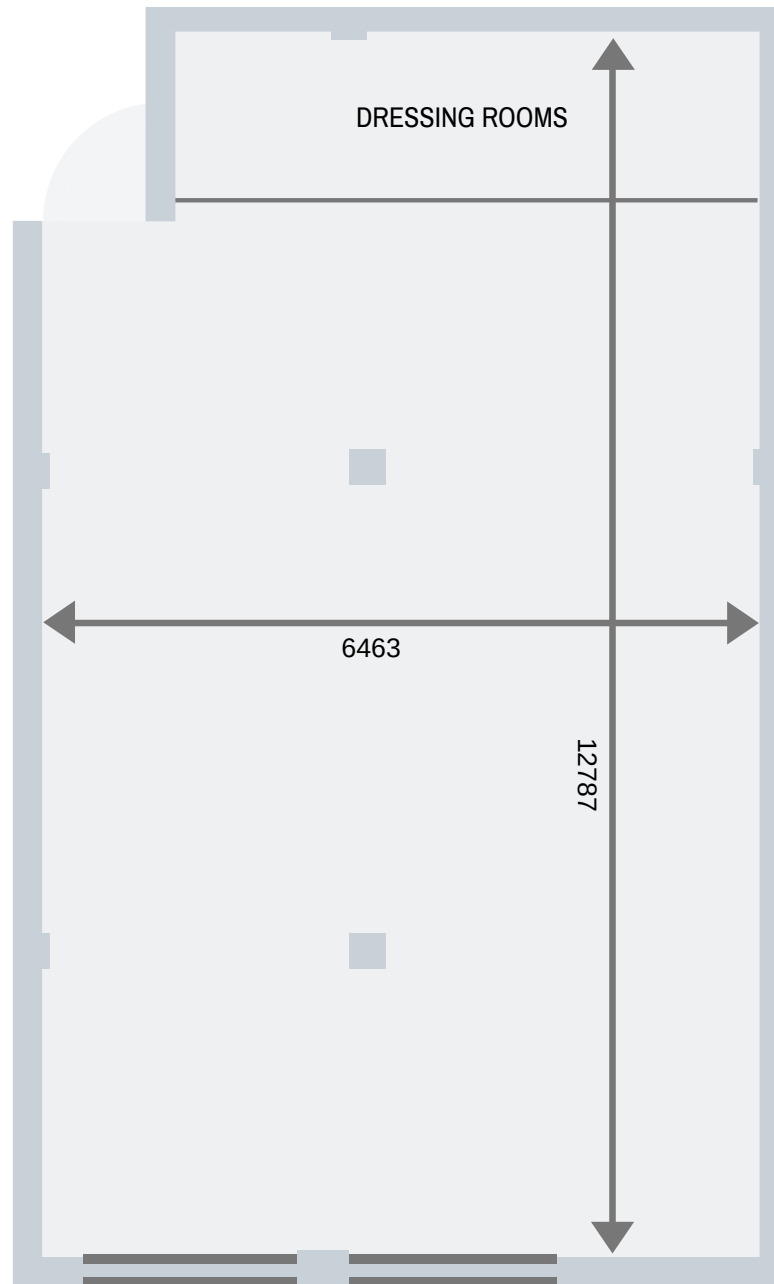
Security (from 4pm as building closed): €25/hr

Artist/Non-Profit Rates (ex. VAT)

Hourly:	€30
Half Day (4 hours before 4pm):	€100
Mon.- Fri. Daytime (8AM - 4PM):	€200
Sat. & Sun. Daytime (10AM-4PM)	€200

Security (from 4pm as building closed): €25/hr

First Floor Studio Floor Plan





What's an off-site day without refreshments?!

Whether you need breakfast, lunch, dinner or light refreshments, we can provide fabulous middle-Eastern inspired food, artisan coffees, canapés and drinks receptions, from in-house caterers Blas. We can work to your budget to design a menu of refreshments that fit your needs for your day.



GET IN TOUCH

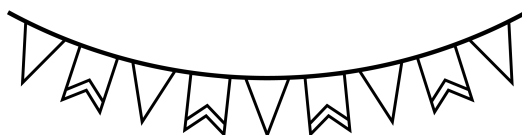
Our team would be happy to put together a bespoke package for you to fit your objectives, number of attendees/participants, date and budget.

We will be then be on hand to coordinate the elements of your day or night at The Chocolate Factory, with you!

If you have a specific date in mind for your off-site day or event, please get in touch with our team as soon as possible.

You can email us on events@greenshoosevents.com or give us a call on 087 352 1920.

Rates correct as of October 2109



GREEN SHOES

EVENTS • MARKETING • INNOVATION