

JUBILEE SUITES

GROUND FLOOR

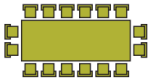

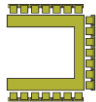
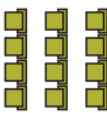
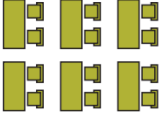
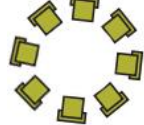
perfect syndicate rooms for smaller meetings up to 10 delegates. Ideal for half day or hourly meetings.

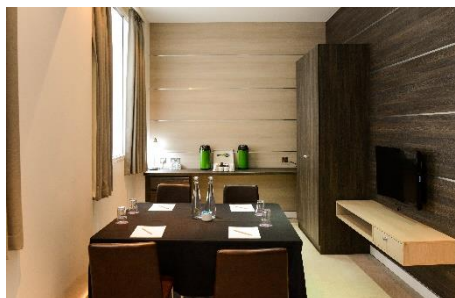
FACT SHEET

2017

Width 5m Length 4.9m Square meters 24.7m²

CAPACITIES

LAYOUTS	
BOARDROOM 	CABARET 
8	N/A
U SHAPE 	THEATRE 
N/A	12
CLASSROOM 	CIRCLE OF CHAIRS 
N/A	N/A



Lower Ground Floor

FACILITIES

- NATURAL LIGHT
- WHEELCHAIR ACCESSIBLE
- POWER SOCKET (4)
- NO WIRED INTERNET

- 32" LCD TV
- VGA/HDMI CONNECTIVITY
- WIRED TELEPHONE
- WIRELESS INTERNET

OPTIONAL

- WIRELESS AV CONNECTIVITY
- CONFERENCE PHONE (WEBEX)

- VIDEO CONFERENCING (WEBEX)

**FIBRE OPTIC
HIGH SPEED
INTERNET
INCLUDED**

FLOOR PLANS

Jubilee Suites

Layout: Boardroom

Catering: Inside Room

Natural Light: Natural Day Light

Floor: Ground Floor

JS1: Cab: 6 BD: 7 (without projector)

JS2: Cab: 6 BD: 7 (without projector)

JS3: Cab: 8 BD: 8 (with projector)

JS4: Cab: 8 BD: 8 (with projector)

JS5: Cab: 6 BD: 5

JD1: BD: 6

JD2: BD: 6

