



The Gallery

The gallery has two rooms available for exhibitions. One large room & one smaller room. Both rooms are laid with lovely LVT Chestnut flooring with clean white walls, perfect for displaying artworks. (see floor plan for further details).

The larger room is our main gallery space where we have our gallery gift-shop and reception area. The smaller room is mainly used as a photography studio but can be easily converted into a gallery space either on its own or combined space with the larger room. This is achieved by moving the dividing wall between the two spaces. (see floor plan).

The dividing wall can be configured as additional hanging walls for displaying artworks during exhibitions. Additional Z panel walls are also available for hanging artwork.

Both rooms are fitted with a sophisticated, track lighting system, and with adjustable hanging systems to suit any artwork.

Gallery Hire Rates

- Larger Space – £2600.00 per week
- Smaller Space – 1500.00 per week
- Combined Space – £3700.00 per week
- Additional Days – £600 per day (Larger Space)
- Additional Days – £380 per day (Smaller Space)

Facilities

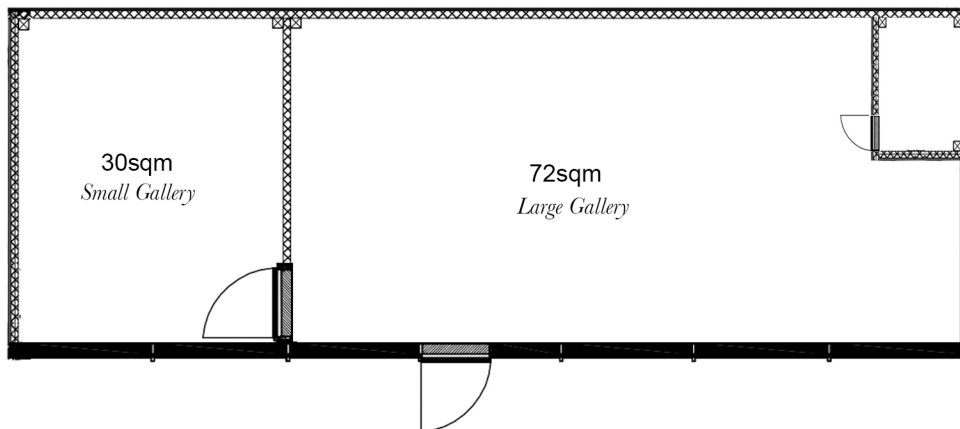
- Comfort cooling throughout
- Central heating throughout
- High speed fibre wireless internet
- Toilet facility
- Kitchenette with a fridge
- Tea making facilities,
- Wine & champagne glasses,
- Canape serving platter
- Water jugs and Ice buckets

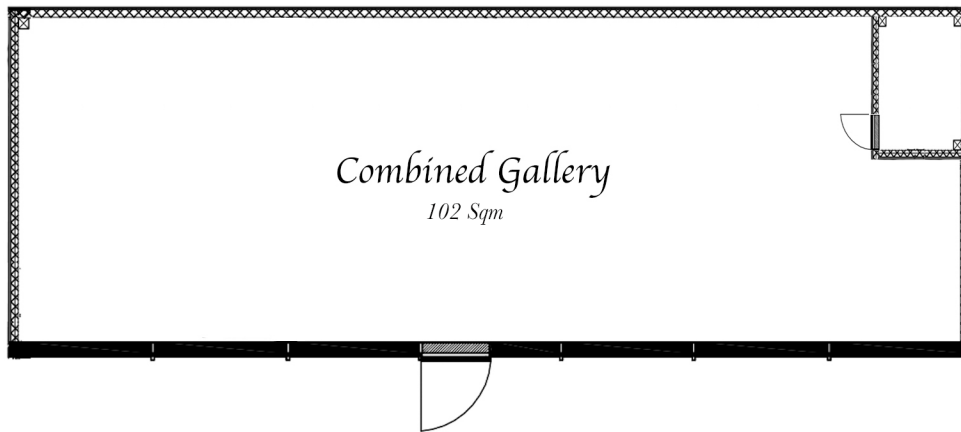
- Fully invigilated
- Installation and curatorial help if required

Dimensions & Wall Hanging Space

- Total Fixed Wall Space
 - 20697m
 - 3018.5m
- 3 Sets of Z panel = 18 wall surfaces
 - 1200mm - Wide each
 - 2000mm - Height each
- 3 Moving walls = Double Sided
 - 1535mm - Wide each
 - 3018.5mm - Height each
 - 700mm Thickness

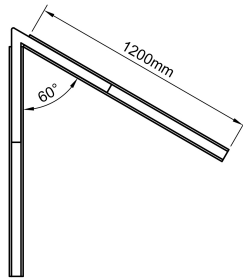
Gallery Floor Plan



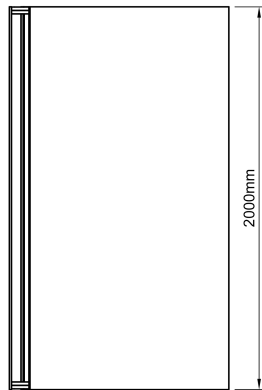


Z Panels

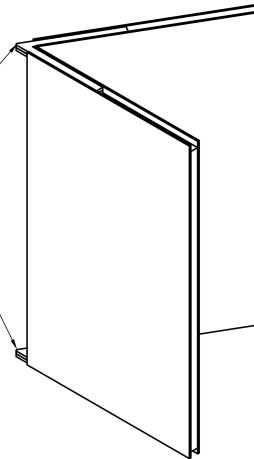
Plan



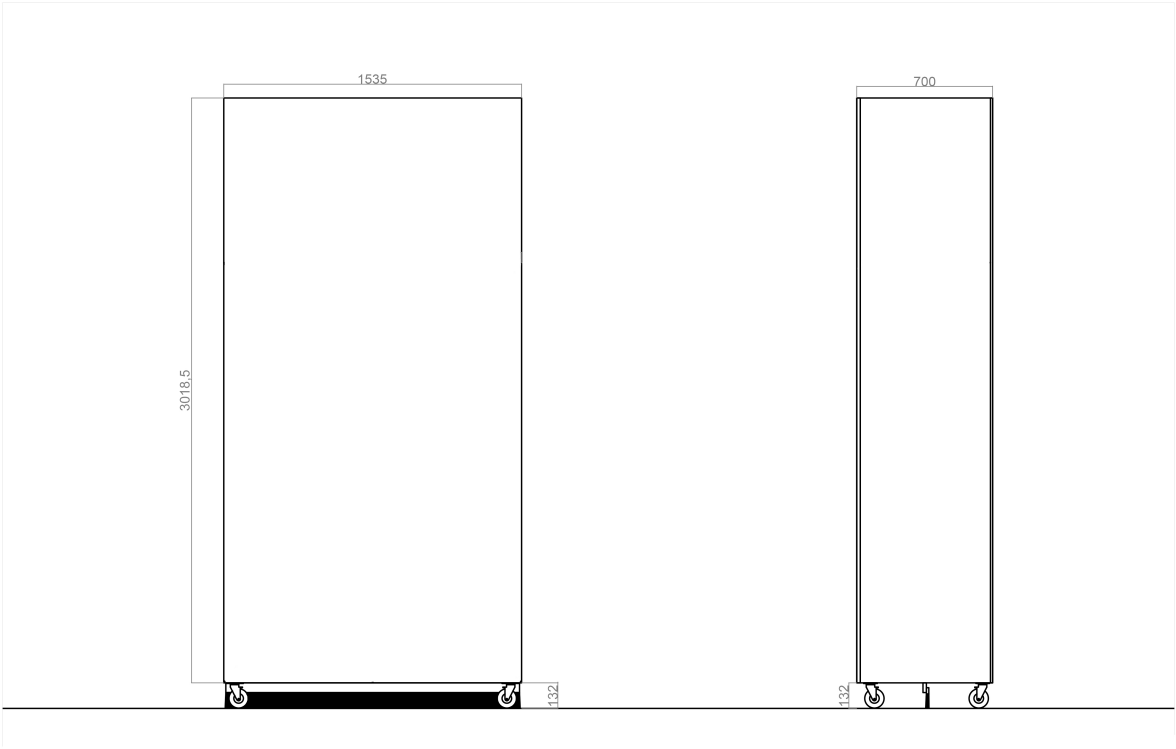
Side
Elevation



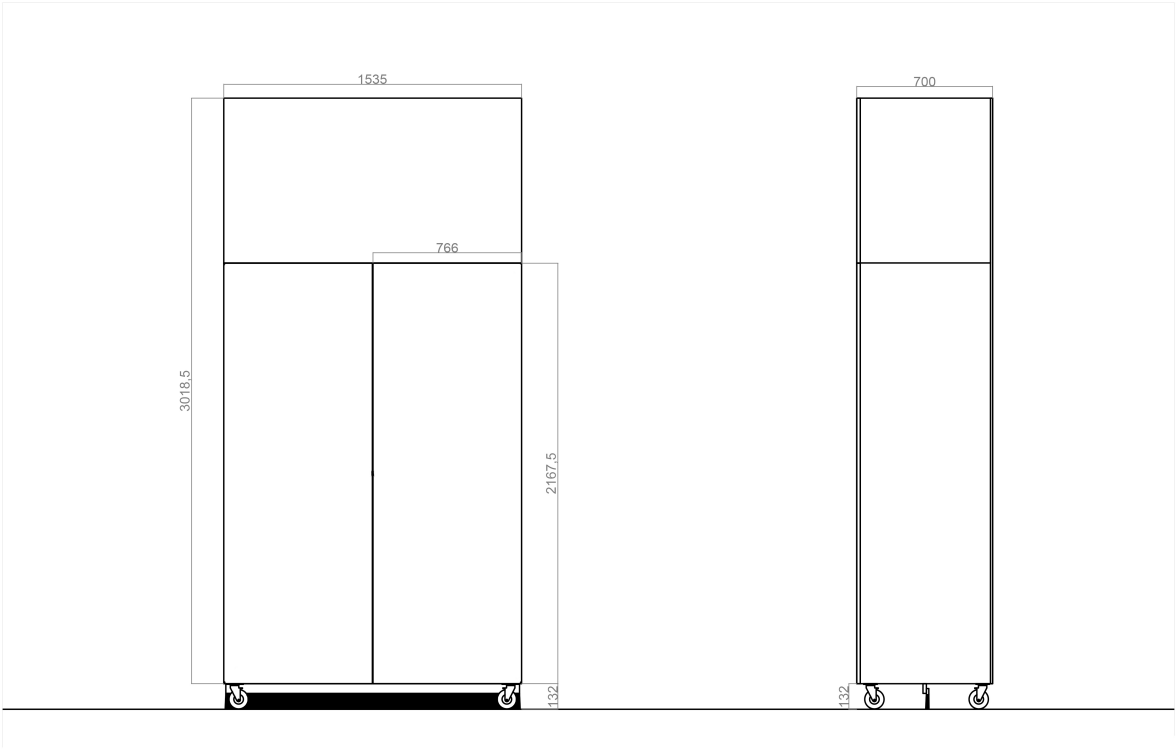
Formers will protrude from
the reverse side
of the panels on the
top and bottom



Moveable Wall Front View



Moveable Walls Back View Doors Closed



Gallery Rules & Guidelines

- 50 percent deposit due at time of booking. Remaining rental fees due on rental day
- Fees for additional time that was not billed during the initial booking will be due at the end of the rental period
- £100 minimum cleaning fee required for excessively dirty studio. Additional charges may apply depending on gallery condition at the end of hire.
- No smoking is allowed in the gallery. Projects involving smoke must have prior consent of a gallery representative
- Music is to be kept at reasonable levels
- No one will be admitted who is under the influence of alcohol or illegal substances
- No pets allowed without prior consent of a gallery representative.