



DOLTONE HOUSE

EVENTS • VENUES • CATERING

SOHO

SYDNEY HARBOUR BACKDROP

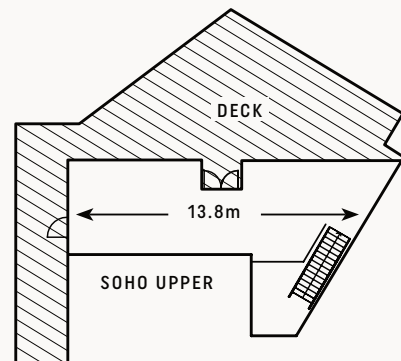
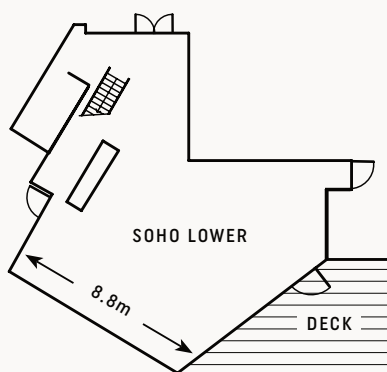
Complementing Jones Bay Wharf's heritage charm, newest addition to the venue portfolio. Multi award winning designer, Greg Natale's New York inspired studio design, ideal for meetings, dining and mingling with elevated harbour views.

WINNER

MEETINGS AND EVENTS INDUSTRY HALL OF FAME
SPECIALTY MEETING VENUE

Jones Bay Wharf SOHO

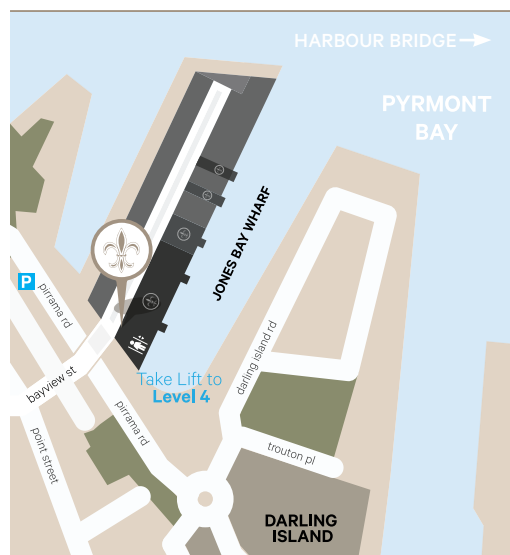
- C-level management suite
- Breakout meeting space
- Private dining, exclusive designer space
- Lectern/Microphone, surround speakers for background music
- 65" LCD screen
- Projector and screens available
- Outdoor private elevated decking
- Floor to ceiling windows
- Abundance of natural light
- Two level designer contemporary fit out
- Blackout facilities available



CAPACITIES	BANQUET	COCKTAIL	THEATRE	CABARET
	70	100	100	56

FOOD & CATERING - AWARD WINNING -

Serving Sydney's best quality produce, from the freshest of seafoods, and the premium cut of meats, we source only the highest standard for you.



LOCATION

The setting offers an event experience on the best harbour in the world, an ideal venue location and a very unique address for your next event.

Only minutes from our Darling Island venue and the Darling Harbour precinct, Doltone House Jones Bay Wharf is within easy walking distance of the CBD and all the attractions that Sydney city has to offer.

The venue may be accessed by boat, water taxi, ferry, light rail, bus or private transport.

Jones Bay Wharf
Level 4
26-32 Pirrama Road,
Pyrmont. 2009

PARKING

Parking is available directly across the road from the venue in the Jones Bay Wharf Car Park or at The Star. You may enter the venue from the street level stairs or dedicated lift on Pirrama Road.