



## SOUTH PLACE HOTEL

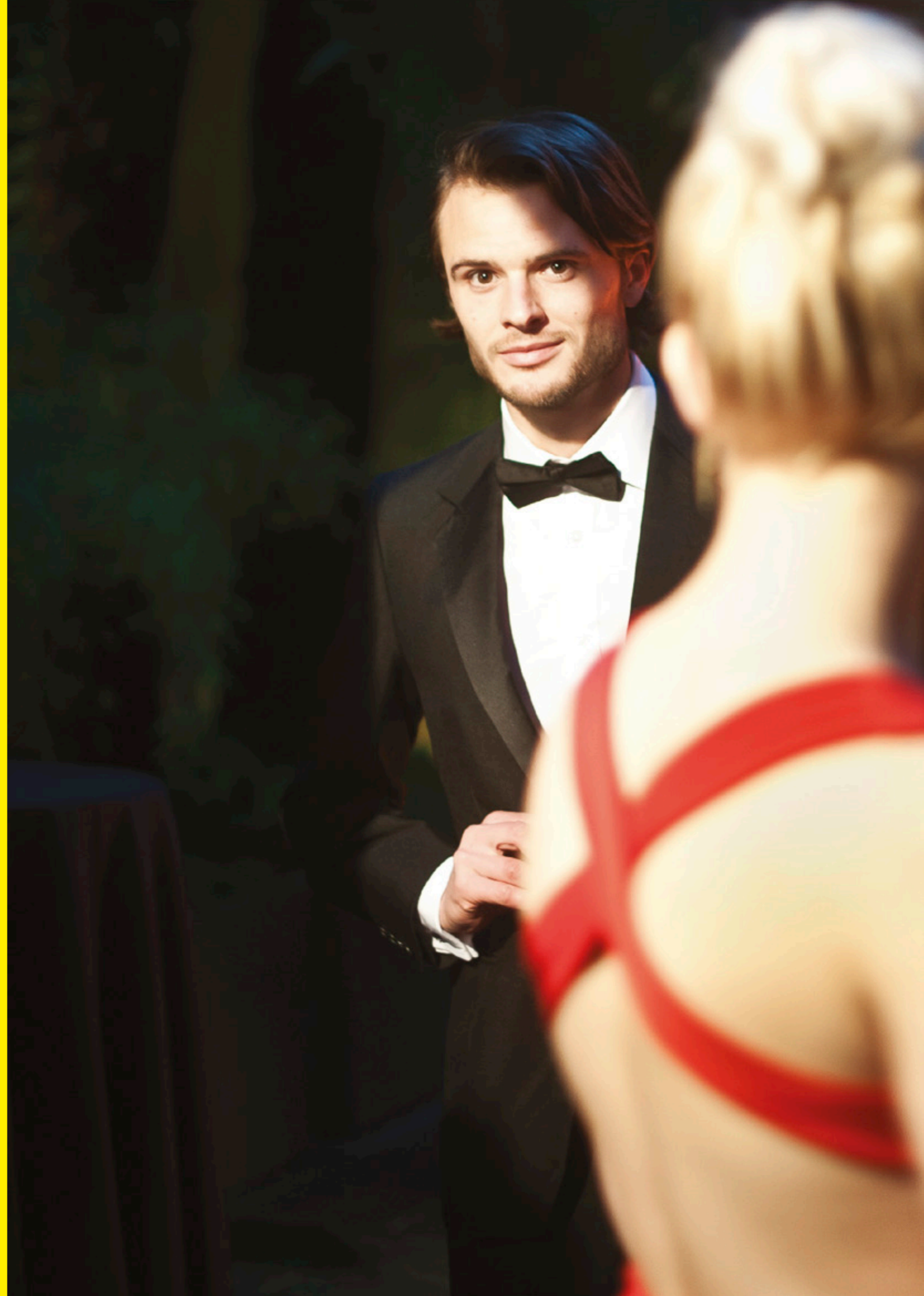
*Meetings & Events*

*South Place Hotel's five private dining and meeting rooms are all situated on the first floor and combine distinctive, Conran-designed interiors with all the technical, AV and practical functionality you might require. Ideal for private dining and corporate entertaining, all of the rooms are equally suited to day meetings, presentations and product launches.*

*The rooms can accommodate groups of between six and 200 people, or the whole of the first floor can be hired for up to 400 guests.*

**Contents**

<i>Meetings &amp; Private Dining</i>	<i>2-3</i>
<i>Parties &amp; Exclusive Hire</i>	<i>4-5</i>
<i>Solo &amp; Kuryakin</i>	<i>8-9</i>
<i>Peel, Purdey &amp; Steed</i>	<i>10-11</i>
<i>Floorplans, Capacities &amp; Dimensions</i>	<i>back cover</i>



**MEETINGS & PRIVATE DINING**

**Meetings**

South Place Hotel's meeting rooms can accommodate boardroom-style groups of six to 36 people.

For larger presentations and meetings, Purdey and Steed interconnect to provide theatre-style or U-shape set-ups that seat up to 80.

All of the rooms include a panelled wall behind which you will find cloakroom storage and full audio-visual facilities, including a 55-inch Bang & Olufsen television.

**Private Dining**

South Place is the first hotel from restaurateurs D&D London, and food is a particular passion.

Our private dining menus have been specially created for different needs and occasions, from a working lunch to a five-course dinner. Needless to say, if you are looking for something very specific, our chefs will work with you to ensure that we deliver.

For larger parties and corporate entertaining, Purdey and Steed interconnect to create a space for up to 200 guests, or you can hire the whole of the first floor for parties of up to 400.

**Angler Chef's View**

In addition to the five private dining rooms on the first floor, we can also sit up to 12 people in the Chef's View at Angler, our seafood restaurant and rooftop terrace on the top floor of the hotel.

**Suite 610**

The 'penthouse' suite on the 6th floor of the hotel can be hired as a private dining room for up to eight people wanting the ultimate 'wow factor'.



Clockwise from top: the cityscape from Angler Chef's View; Purdey & Steed; bowl food for a drinks reception

Clockwise from top: Peel; private dining in Suite 610; lobster kedgeree

**PARTIES & EXCLUSIVE HIRES**

**Parties**

*Let your imagination run wild and leave the hard work to us: we can help you host the ultimate house party to for up to 1,000 people, where you and your guests can eat, drink and make merry, before tumbling into bed in one of the hotel's 80 luxurious bedrooms.*

*Of course, we can also help you with smaller parties, whether you are celebrating a birthday, hosting a staff summer party or Christmas knees-up, or launching a product to press.*

**Exclusive Hire**

*On special occasions, our two restaurants are available for exclusive hire.*

*Up on the top floor you will find Angler restaurant and rooftop terrace, which can be all yours for up to 84 people (seated).*

*On the ground floor, 3 South Place Grill is ideal for parties of up to 100.*



*Clockwise from far left: DJs in the Secret Garden; Angler Terrace; 3 South Place Grill; Angler restaurant; cocktails*



## SOLO & KURYAKIN

### Solo

*The smallest of our five private dining and meeting rooms none the less seats up to 20, and the table flips over to make a billiard table (perfect for double agents at play).*

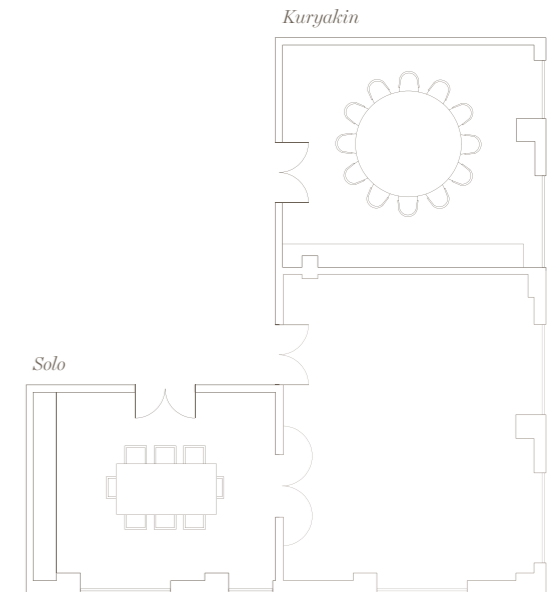
*These two rooms are named after Napoleon Solo (the original Man from U.N.C.L.E.) and his side-kick, Ilya Kuryakin.*



*Clockwise from top: Solo set for a meeting; Solo pool table; Kuryakin with video conferencing; Solo pool balls*

### Kuryakin

*Otherwise known as the red room, and for obvious reasons: it can seat up to 20 people around the stunning, red lacquer table, and the room is fully equipped for video conferencing.*



Room name	Solo	Kuryakin
Sqm	37	61
L	6.85m	7.1m
W	5.34m	8.68m
H	2.55m	2.55m

**PEEL,  
PURDEY & STEED**

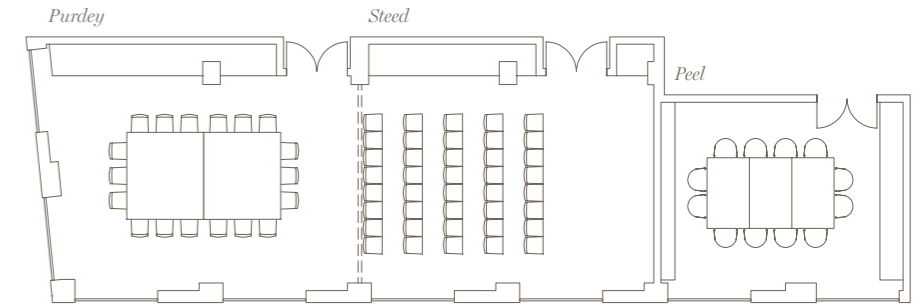
**Peel**

Named after glamorous Emma Peel from *The Avengers*, this room seats up to 20 and is made instantly memorable by the wall of silver birch trunks and a striking, bespoke chandelier that looks like a giant hat from *Ladies' Day* at Ascot.

**Purdey & Steed**

Named after John Steed and his sidekick, Purdey from *The New Avengers*, these two rooms interconnect to create a single space that seats up to 100 people or up to 200 guests for a standing reception.

Each room benefits from floor-to-ceiling windows and full AV, including drop-down screens and black-out curtains. These versatile rooms can be used for theatre-style presentations, large boardroom meetings, dinners, cocktail receptions and parties.



Left to Right: Peel; Purdey; Steed

Room name	Purdey & Steed	Purdey	Steed	Peel
Sqm	114	56	58	37
L	16.31m	8.03m	8.28m	6.67m
W	6.98m	6.98m	6.98m	5.34m
H	2.55m	2.55m	2.55m	2.55m



**FLOORPLANS,  
CAPACITIES & DIMENSIONS**



Room name	Purdey & Steed	Purdey	Steed	Peel	Solo	Kuryakin
Sqm	114	56	58	37	37	61
L	16.31m	8.03m	8.28m	6.67m	6.85m	7.1m
W	6.98m	6.98m	6.98m	5.34m	5.34m	8.68m
H	2.55m	2.55m	2.55m	2.55m	2.55m	2.55m
Theatre	100	50	50	-	-	-
Boardroom	40	20	20	20	20	20
Cabaret	48	24	24	-	-	-
Dinner	120	50	50	20	20	20
Reception	200	80	80	-	25	-

Cover contains Ordnance Survey data © Crown copyright and database right 2011





*Our dedicated Events Team  
will be happy to help:*

*r +44(0)20 3215 1219 [hello@southplacehotel.com](mailto:hello@southplacehotel.com)  
3 South Place, London EC2M 2AF*

*[southplacehotel.com](http://southplacehotel.com)*