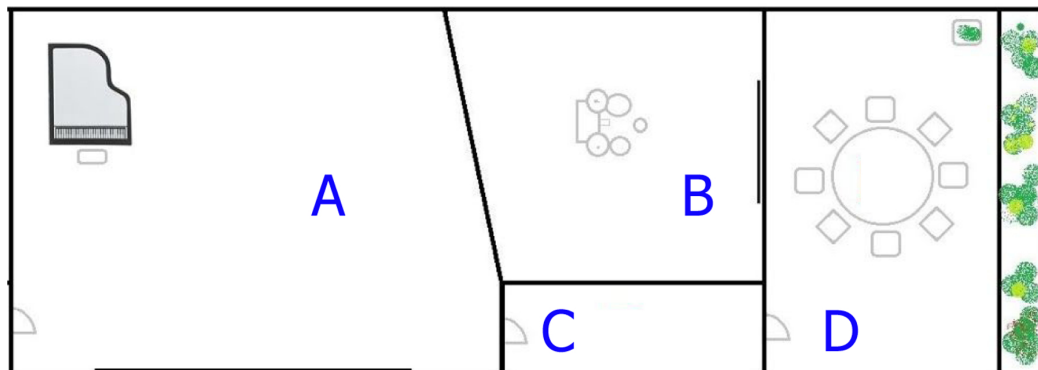


RECORDING STUDIO SPEC



DIMENSIONS

A - Live Room / Main Tracking Space

Width – 4.40m

Length – 6.30m / 7.60m (due to raked wall at drum booth end)

Height – 2.60m (2.30m under acoustic treatment)

B - Drum Booth

Width – 3.00m

Length – 3.00m / 3.75m (due to raked wall at live room end)

Height - 2.60m (2.30m under acoustic treatment)

C - Sound Lock

Width - 1.35m

Length – 4.00m

Height – 2.60m

D - Conservatory / Lounge (inc terrace)

Width – 5.00m

Length – 4.30m

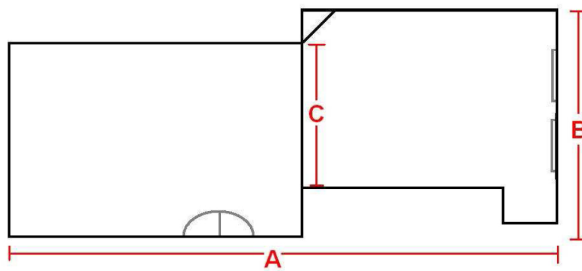
Height – 2.60cm

The Premises

Music Studios & Cafe

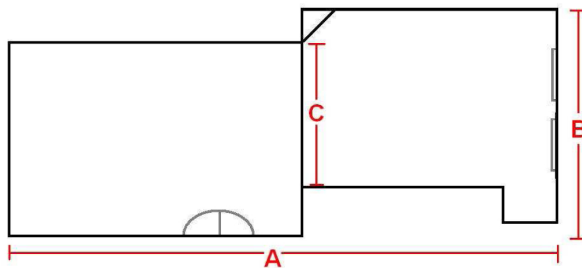
REHEARSAL STUDIO TECH SPEC

STUDIO A1 – Large Room, Ground Floor



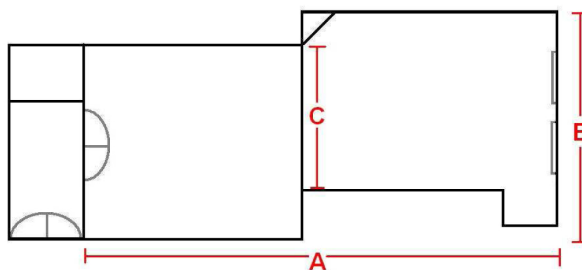
DIMENSIONS
(A) 10.5m
(B) 5.8m
(C) 3.9m

STUDIO A2 – Large Room, 2nd Floor



DIMENSIONS
(A) 10.5m
(B) 5.8m
(C) 3.9m

STUDIO A3 – Large Room 1st Floor



DIMENSIONS
(A) 8.9m
(B) 5.8m
(C) 3.9m