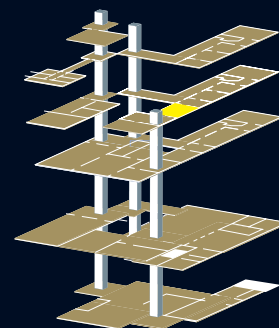
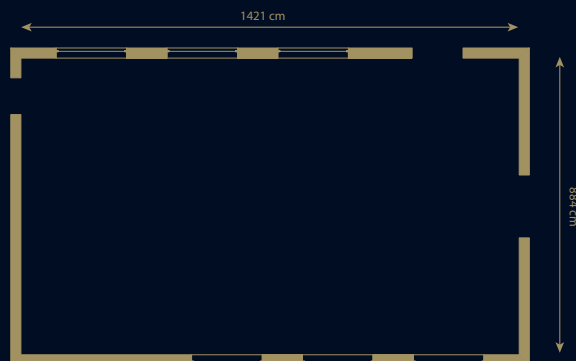


Historic Beauty in *The Ampthill Suite*

The Ampthill Suite is located on the third floor of the central section in the building. With its distinctive arched ceiling and numerous windows it acts as a perfect reception or meeting room.

Theatre	100
Classroom (fp):	50
U-shape:	32
Cabaret (fp):	64
Dinner:	60
Reception:	150

(fp) = front projection

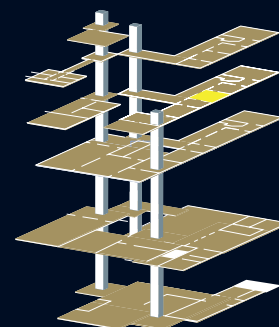
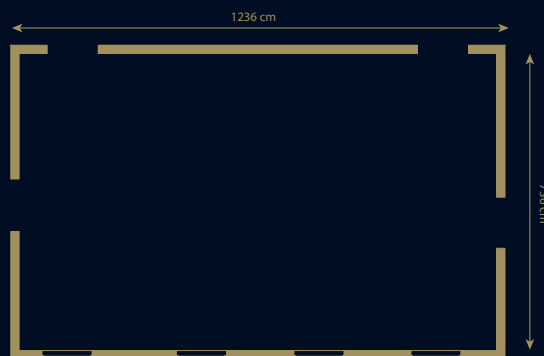


Concentration in *The Cambria Suite*

The Cambria Suite is a favourite for conference and event organisers who use this as their main function room and also use the Ampthill Suite as a breakout or reception area. It also has a coffee station next to it.

Theatre	120
Classroom (fp):	65
U-shape:	32
Cabaret (fp):	80
Dinner:	100
Reception:	200

(fp) = front projection

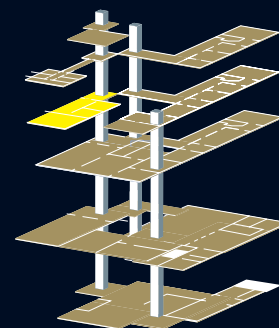
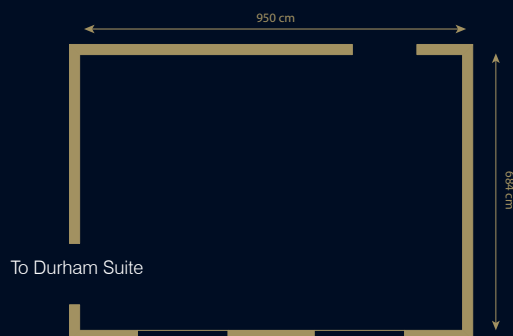


Welcome to:

The Derby Suite

Theatre	45
Classroom (fp):	30
U-shape:	20
Cabaret (fp):	32
Dinner:	40
Reception:	60

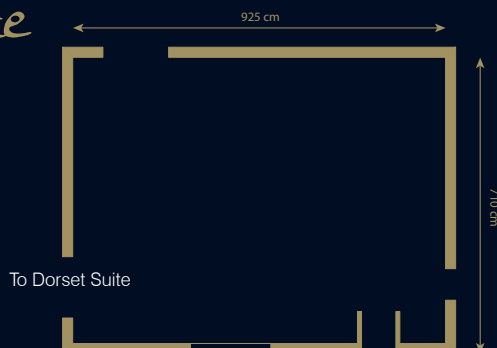
(fp) = front projection



The Durham Suite

Theatre	50
Classroom (fp):	30
U-shape:	20
Cabaret (fp):	32
Dinner:	40
Reception:	60

(fp) = front projection



The Derby, The Durham and The Dorset Suites form the perfect set of self-contained training suites for you and your delegates.

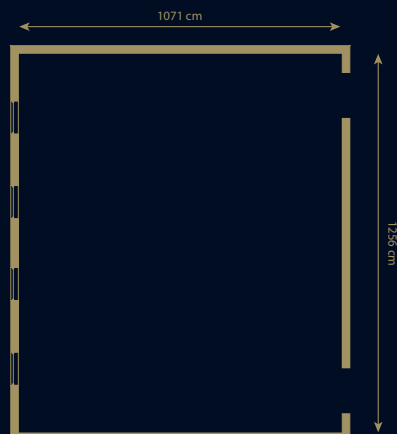
Located on the third floor on the east side of the building, the three rooms have their own coffee station and are also interlinked should you need to move between each room for convenience.

They are also lit with plenty of lights to make sure your delegates are concentrating on the work at hand.

The Dorset Suite

Theatre	80
Classroom (fp):	60
U-shape:	32
Cabaret (fp):	64
Dinner:	80
Reception:	100

(fp) = front projection

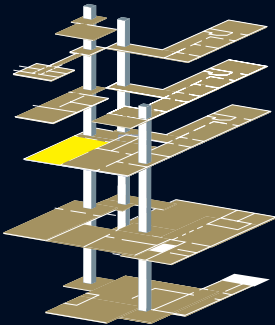


Ideal Suite in *The Cornwall Suite*

The Cornwall Suite's position and size make it ideal for hosting large evening receptions for up to 400 people and also conferences and exhibitions as it is connected to the Crown and Coronet suites.

Theatre	300
Classroom (fp):	150
Classroom (bp):	120
U-shape:	65
Cabaret (fp):	200
Dinner:	200
Reception:	400

(fp) = front projection
(bp) = back projection
63 = Three phase/63amp power point

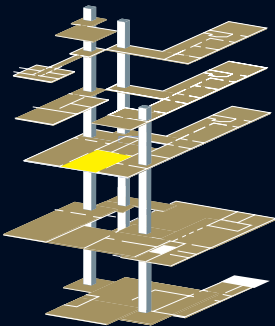
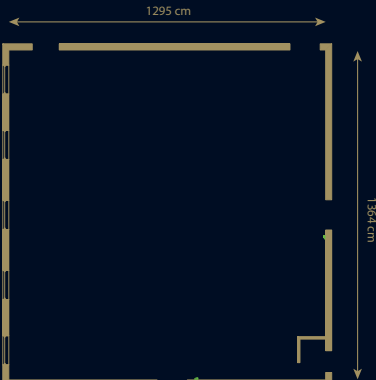


Light Filled Space in *The Crown Suite*

The amazing domed ceiling of The Crown Suite means that this beautifully proportioned room suits any occasion.

Theatre	120
Classroom (fp):	80
U-shape:	40
Cabaret (fp):	80
Dinner:	140
Reception:	250

(fp) = front projection



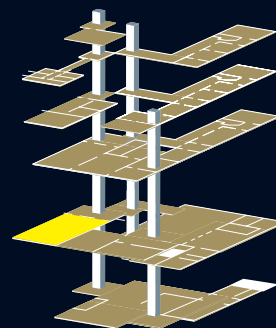
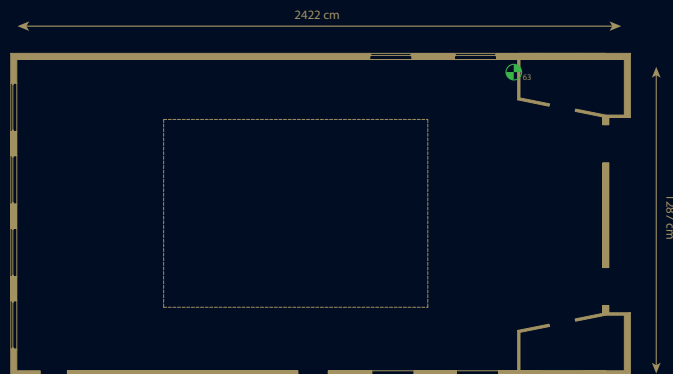
Perfect Space in *The Edinburgh Suite*

The Edinburgh Suite's size and proportions make it ideal for hosting large conferences for up to 300 people and also as a beautiful banqueting suite by night.

Theatre	300
Classroom (fp):	150
U-shape:	65
Cabaret (fp):	200
Dinner:	250
Reception:	400

(fp) = front projection

63 = Three phase/63amp power point



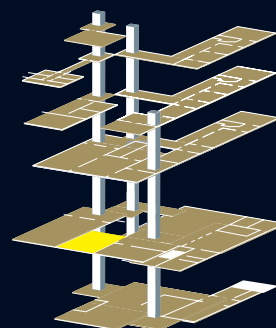
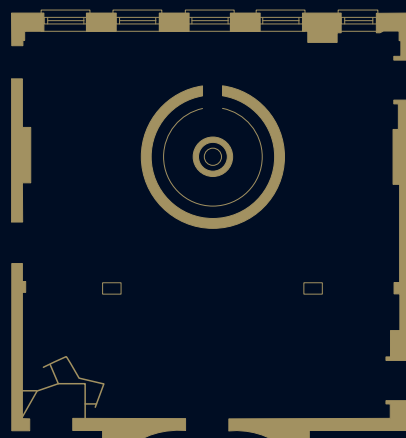
Beautiful Backdrop in *The Drawing Room*

The Drawing Room makes the perfect statement for whatever event you are hosting. Accessed via The Grand Staircase, this room suits various styles and also has a permanent fixed bar for receptions.

Reception:	200
------------	-----

Ideal room for:

- Drinks/canapés reception
- Tea/coffee refreshment area
- Catering area
- Private bar
- Product launches



Telephone: 0207 405 7811

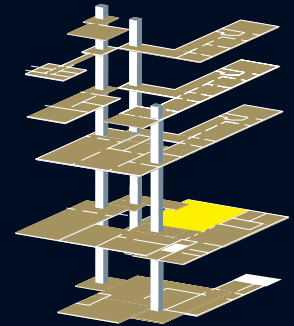
Email: enquiries.gcr@principal-hayley.com

www.ph-hotels.com/grandconnaughtrooms

PH hotels

Grand Events in *The Grand Hall*

Host your conference or event in the Grand Hall and you'll do more than hold the attention of your guests. With the beautiful architecture as your backdrop, create something that will impress, inspire and captivate.



Theatre	750
Classroom (fp):	315
Classroom (bp):	315
U-shape:	120
Cabaret (fp):	400
Dinner:	540
Reception:	1000

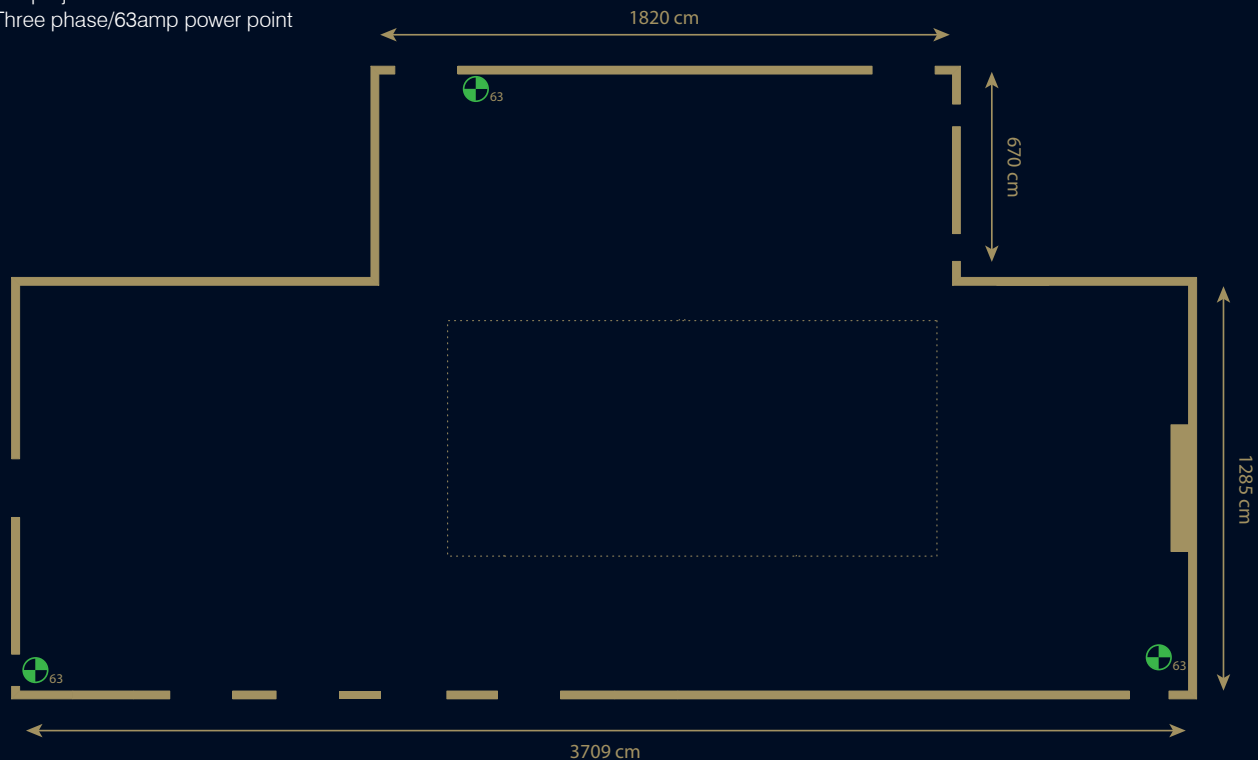
Join us and host your:

- Awards dinner
- Large conference
- Fashion show
- Dinner dance
- Wedding
- Product launch

(fp) = front projection

(bp) = back projection

 63 = Three phase/63amp power point



Telephone: 0207 405 7811

Email: enquiries.gcr@principal-hayley.com

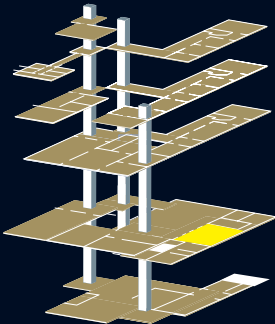
www.ph-hotels.com/grandconnaughtrooms

Brilliant Facilities in *The Balmoral Suite*

Work with the excellent Conference and Events Team to turn the Balmoral Suite into your perfect daytime or evening venue.

Theatre	200
Classroom (fp):	100
Classroom bp):	80
U-shape:	50
Cabaret (fp):	120
Dinner:	150
Reception:	300

(fp) = front projection
(bp) = back projection
32 = Three phase/32amp power point



Office Facilities in *The Presidents Suite*

The Presidents Suite works as the perfect ante room for either the Grand Hall or Balmoral Suite. With access to both rooms and toilet facilities, it forms a perfect space for a conference office.

Theatre	30
U-shape:	12
Cabaret (fp):	24
Dinner:	30
Reception:	60

(fp) = front projection

