



**STUDIOS**

Events



ABOUT  
OUR CLIENTS  
PAST EVENTS  
PERSEVERANCE WORKS  
WIMBORNE HOUSE  
CONTACT US

# ABOUT



With 9 unique spaces across two historical East London buildings, JJ Studios provide a huge 25,000 sqft of event spaces, based in the heart of Shoreditch.

From intimate dinners, to product launches or full-scale brand activations, our spaces are tailored to elevate any event and can accent any style of set up. Our venues boast a large capacity and power output for larger scale live events, or they can offer a more exclusive tone for private events like showrooms, workshops or demos. With multiple interconnected studio spaces across both buildings, we can provide a modular approach to your event's geography, spanning different rooms and levels.

Our experienced and dedicated team can assist with logistics and consultation, to make sure that things run seamlessly, whatever the brief.

# OUR CLIENTS







# PAST EVENTS







# PERSERVERANCE WORKS



## SPECIFICATION:

- Private courtyard oasis
- 4 unique lifestyle venues
- Interconnecting spaces
- 15,000 sq. ft. site
- Lounge space available upon request
- Secure underground parking
- Mounted ipad and Sonos sound system in every space
- Loading bay (courtyard)
- 1gb Uncontended fibre WiFi and Ethernet ports across all floors
- 4 fully functional kitchenettes

# HIDE



## DETAILS

- Total Area: 2000 SQ FT / 185 SQM
- Ceiling Height: 6.8M / 22.3 FT
- U/B HEIGHT 3.3M / 10.5 FT
- Power: 1X 63AMP 1X 32AMP 12X 13AMP
- Daylight Studio
- Original wooden floors
- Kitchenette
- Hair and Makeup Area
- 2 toilets
- Full Ducted Air conditioning system

Times/Rates:







# LOFT



## DETAILS

- Total Area: 2100 SQ FT/ 195 SQM
- Ceiling Height: 3.5M / 11.5 FT
- U/B HEIGHT 3.3M / 10.5 FT
- Power: 1x 63AMP 2X 32AMP 14X 13AMP
- Kitchenette
- 2 toilets
- Hair and Makeup Area
- Daylight & Blackout
- Textured backdrops
- White painted floorboards

Times/Rates:









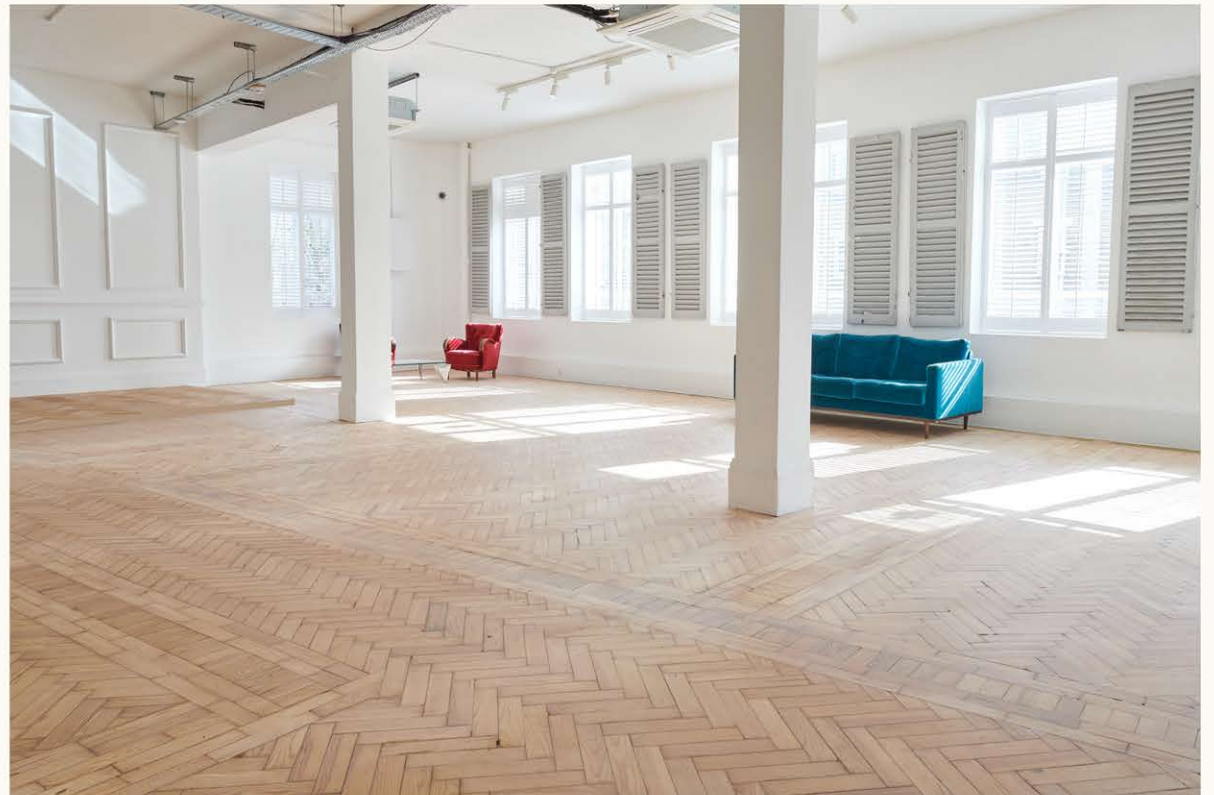
# CORE



## DETAILS

- Total Area: 2250 SQ FT/ 310 SQM
- Ceiling Height: 3.4M / 11 FT
- Power: 1X 63AMP 1X 32AMP 14X 13AMP
- Seperate Hair and Makeup Area
- Kitchenette
- 3 toilet + 2 Showers
- Air Conditioning

Times/Rates:  
enquire within





# ZONE



## DETAILS

- Total Area: 2250 SQ FT/ 310 SQM
- Ceiling Height: 3.4M / 11 FT
- U/B HEIGHT 3.2M / 10 FT
- Power: 1X 63AMP 2X 32AMP 21X 13AMP
- Kitchenette
- Hair and Makeup Area
- Daylight & Blackout
- 1 toilet

Times/Rates:  
enquire within





# FIND US



## PERSEVERANCE WORKS

### BY TUBE AND TRAIN:

Old Street Station - 10 minutes  
walk

Hoxton Overground - 5 minute  
walk

Shoreditch High Street

Overground - 5 minute walk

Liverpool Street Station - 12 minute  
walk

### BY BUS:

55 to Oxford Street

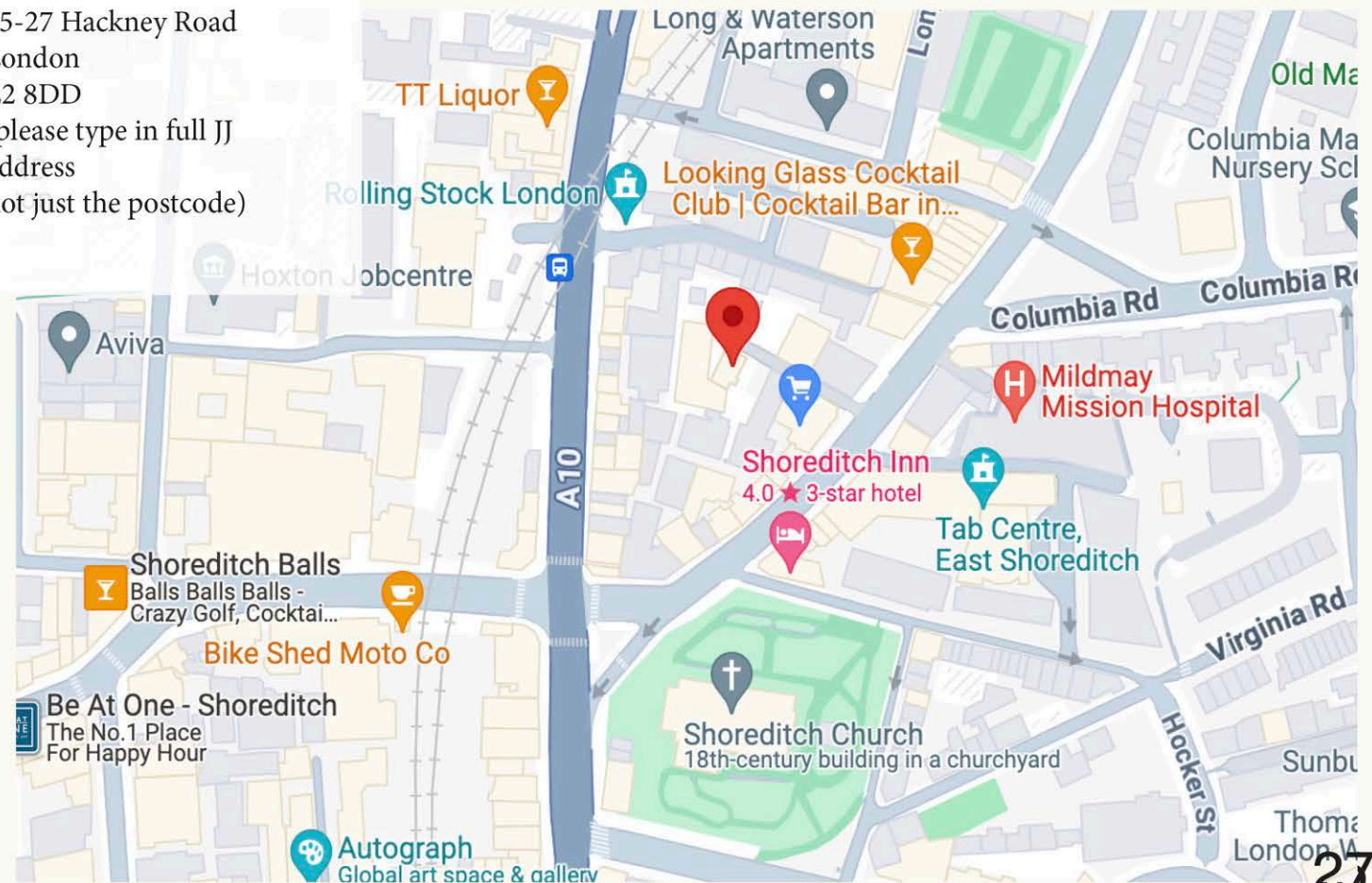
26 from Waterloo

48 London Bridge

### UBERS:

Can be arranged for clients  
upon request

Perseverance Works,  
25-27 Hackney Road  
London  
E2 8DD  
(please type in full JJ  
address  
not just the postcode)



# WIMBORNE HOUSE



## SPECIFICATION:

### SPECIFICATION:

- Goods lift
- 4 Studios
- Full Barista service, in partnership with GRIND coffee
- 3,300 sq. ft. on each floor
- Views over Shoreditch Park
- Versatile spaces
- Onsite parking
- Private loading bay
- 1gb Uncontended fibre WiFi and Ethernet ports across all floors
- Mounted iPad and Sonos sound system in every space
- Kitchenettes



# RECEPTION LOUNGE



## DETAILS

Wimborne Lounge is a warm and inviting space to breakout from your studio experience. Serving fresh grind coffee all day. The lounge area transforms into a beautiful event space, and is available as an additional shoot location, to hire out on request.





# RISE



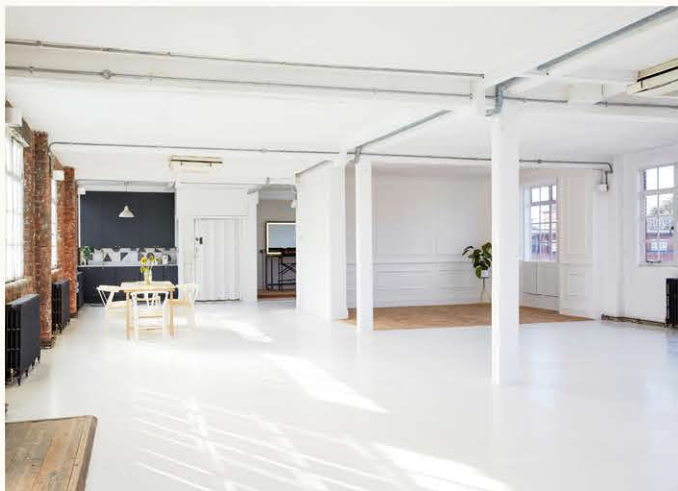
## DETAILS

- Total Area: 3300 SQ FT/ 310 SQM
- Ceiling Height: 9.5 FT / 2.9 M
- Power: 2x 63AMP (single phase) 9x 13AMP
- Kitchenette
- Daylight studio
- Textured backdrops
- Access to good lifts
- Access to 6 toilets
- Dressing room
- Hair and Makeup Area
- Multiple floor textures

Times/Rates:  
enquire within







# MILL



## DETAILS

- Total Area: 1900 SQ FT / 170 SQM
- Ceiling Height: 10,5ft / 3,3M
- U/B Height 3M / 9,5 FT
- Power: 1x 63AMP 10x 13AMP
- Kitchenette
- Dressing area
- Hair and Makeup Area
- Textured backdrops
- Access to 6 toilets on the front staircase
- Moveable partition walls, can be combined with LOOM Studio

Times/Rates:  
enquire within







# LOOM



## DETAILS

- Total Area: 1,400 SQFT 130 SQM
- Ceiling Height: 10.5 FT / 3.3 M
- Power: 1x 63AMP 10x 13AMP
- Kitchenette
- Access to good lifts
- Access to private bathroom
- Dressing area
- Hair and Makeup Area
- Textured backdrops
- Daylight studio
- Concrete floors
- Can be combined with MILL Studio

Times/Rates:  
enquire within

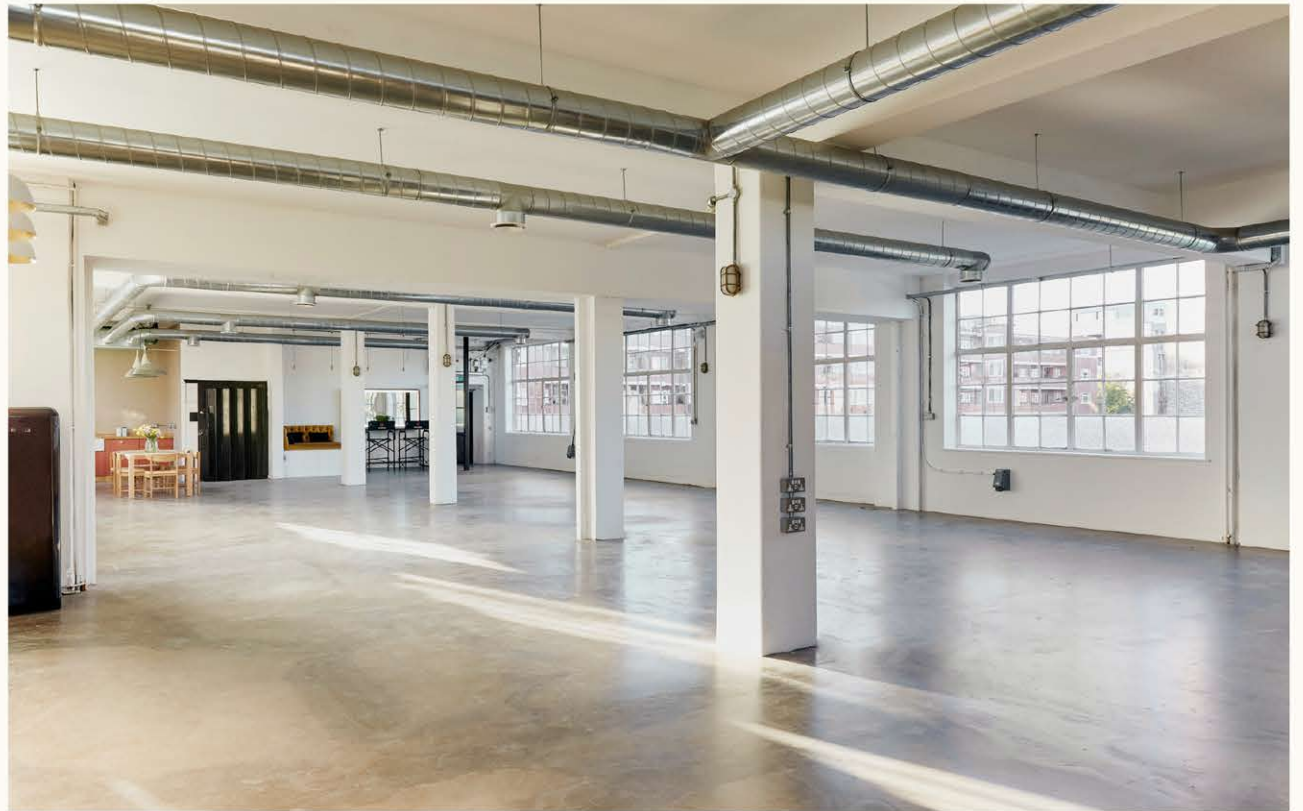




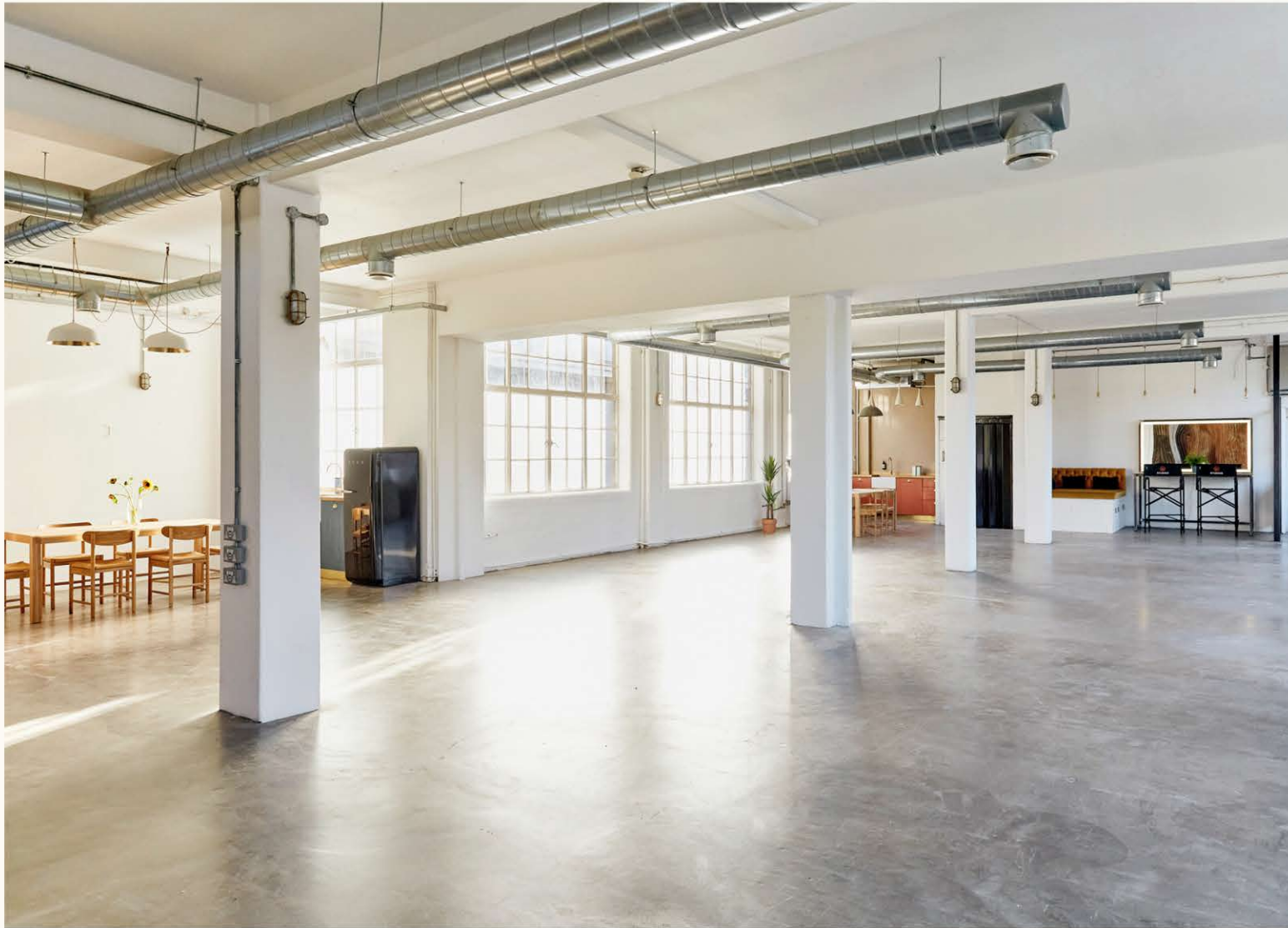
# MILL & LOOM



MILL & LOOM can be cleverly opened up via our dividing walls to create a big, open 3,300sqft space.







## DETAILS

- Total Area: 3300 SQFT / 305 SQ M
- Ceiling Height: 10.5 FT / 3.3 M
- Power: 2x 63AMP 20x 13AMP

### Dual Kitchenettes

- Access to good lifts
- Access to private bathroom
- Dressing area
- Hair and Makeup Area
- Textured backdrops
- Daylight studio
- Concrete floors

# DAWN



## DETAILS

- Total Area: 2000 SQ FT / 185 SQM
- Ceiling Height: 14 FT / 4.2 M
- Power: 1x 63AMP 1x 32AMP 6x 16AMP 6x 13AMP
- Ground floor cove
- Air conditioning
- Kitchenette
- Hair & Makeup Area
- Dressing Room
- Access to goods lift
- Access to 6 toilets on the front staircase
- Daylight & Blackout

Times/Rates:  
enquire within







# FIND US



## WIMBORNE HOUSE

Wimborne House  
151-155 New North Road  
London  
N1 6TA  
(please type in full JJ address  
not just the postcode)

### BY TUBE AND TRAIN:

Old Street Station - 10 minute walk  
Hoxton Overground - 12 minute walk  
Essex Road - 8 minute walk

### BY BUS:

141 to London Bridge  
76 to Waterloo  
21 to Lewisham

### UBERS:

Can be arranged for clients upon request



# CONTACT US



STUDIOS@JJMEDIA.COM

020 3432 6775

