



## Events Brochure

[edgeleypark.com](http://edgeleypark.com)

# Edgeley Park



## Stockport's Premier Conference & Events Venue

Eight beautifully refurbished event spaces, present a unique destination at one of Stockport's most historic sporting venues, Edgeley Park.

£1m  
refurbishment



Ten minute walk  
from Stockport  
station



Eight  
function  
suites



Capacity for up  
to 800 people

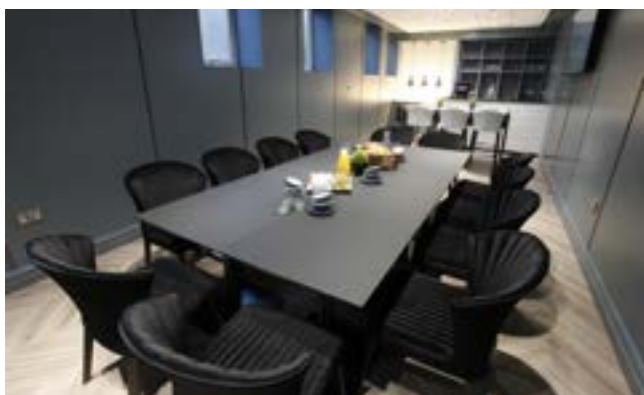


Customised  
food and drink  
packages



## *Welcome* to Edgeley Park, the newly refurbished venue to hire in Stockport

Edgeley Park is one of the most historic sports stadiums in the country and has been the place of many memorable moments for generations of County fans and the local community. The 1883 at Edgeley Park boasts a capacity of up to 800, making it the largest venue space in the area and with access to our large private car park, you won't need to worry about accessibility. There are a range of function rooms to hire, whether you're looking for the perfect wedding venue in Stockport, hiring a meeting room, or looking for a more modern party venue for a special celebration, our onsite events team strive to create memorable events which will exceed your expectations.



## Conferences

### *Stockport's unique business event venue*

If you're looking to hire a meeting room or corporate event space in Stockport, look no further. Edgeley Park is the ideal venue for a business meeting, conference or exhibition. The stadium is a five minute walk from the train station and only a 10 minute drive from Manchester airport, making the journey convenient for your guests and clients.

We have an array of different sized function rooms available to hire, where you can host an event with up to 800 people. For larger business events, such as exhibitions or conferences, The 1883 would be the perfect space. We also cater for smaller meetings in The Cheadle and The Hardcastle and for even smaller groups we have our pitch facing FK Lounge, which is perfect for private meetings.

Take your presentations to the next level with our state-of-the-art AV system, screens, and projectors. We can also provide flip charts, stationery and notepads too. Take advantage of our in-house catering and book our lounges and suites for a conference with a buffet or sit-down meal option. Our chefs and events team can work with you to create a dining experience bespoke to your requirements.



## Weddings

### *A modern wedding venue in Stockport*

Here at Edgeley Park, we would love the opportunity to make your wedding day truly memorable. Every wedding is unique and our team are experts in creating an experience that will never be forgotten. Whether you decide on a large and lavish event or a more intimate reception with close family and friends, we can tailor your package to suit your individual needs.

We have a wide range of newly refurbished reception rooms to choose from which are perfect for all kinds of weddings, with our largest space holding up to 450 guests and additional smaller rooms for more intimate gatherings. Our wedding specialists will be able to recommend the best event space based on your requirements.

Our head chef will work closely with you to create a wedding menu based on your personal tastes, whether it's a 3-course meal or a buffet, we can guarantee quality dishes that your guests will love. So, if you're looking for a wedding venue in Stockport, Greater Manchester or Cheshire then speak with one of our wedding experts today.



## Special Events & Exhibitions

*Hire one of our newly refurbished suites for your event*

Birthday celebrations, party nights, music evenings, social gatherings, school proms, fundraising events, funeral wakes, christenings – we can host them all at Edgeley Park. We offer lots of different function rooms to choose from, however big or small your event may be. Our team of experts can assist in creating an event that will never be forgotten, be it organising a casino night for a big birthday, a school prom with awards or a large christening, we'll work closely with you to ensure your event is planned to your exact requirements.

We can cater for all budgets and have an array of packages to choose from, when it comes to food and drinks we have a team of chefs who can create a bespoke menu, or if you would prefer, we have a number of set menus for you to choose from. There are also licenced bars in all function rooms. If you're looking to throw an event in Stockport then reach out to our team and we can help plan an event you'll remember for years to come.



## Edgeley Park Presents

Here at Edgeley Park we host a number of our own events throughout the year, including sportsman's dinners, live music concerts, comedy nights, Christmas parties, celebrity charity matches, Sunday brunches, networking events and fundraisers. With eight newly refurbished rooms and our largest room holding up to 800 guests, there's a perfect setting for any event.

Our in-house events and catering team organise everything from start to finish and are experienced in organising all types of events, from venue styling to first-class entertainment. When it comes to food, our team of chefs take pride in producing quality food for every event, whether it's a three-course meal, a premium buffet or afternoon tea. For all our Edgeley Park events we always like to create a real atmosphere,

which is why the entertainment we chose is second to none. Previously we've welcomed electronic violinists at our Christmas parties, magicians to family fun days, singers to mother's day events, comedians to sportsman's dinners and much more.

Take a look at our current live events and buy tickets online through the Edgeley Park website now.



## Food and Drink

Our team of onsite chefs take pride in producing quality food for every event, whether it's a three course meal, a buffet or a bespoke wedding menu. Our chefs take great care to source quality local ingredients and prepare them with precision and attention to detail. Our team will work with you to find the food and drink best suited to your event - we can produce our set menus or develop a bespoke menu based on your requirements.








## Live Entertainment

There's no better way to transform a party into a real celebration than with live entertainment. Whether it's a live band singing your first dance song, a magician, or a comedian, we can book any kind of act suited to your event. With our connections locally we can make recommendations on an array of talented entertainment, or if you already had something in mind, we can organise this for you too.



# The Suites

The 1883      The Cheadle      The Hardcastle      The FK Lounge      The Pareto      Vita Bar      The Boardroom      The Concourse      The Pitch

# THE 1883

The 1883 is our main lounge and one of the largest in the area, boasting a capacity of up to 800 guests for a seated event. Located on the ground floor with direct access from the car park, this lounge offers its own reception areas, ideal for arrival drinks. A unique feature of The 1883 is the world class integrated AV system that's been newly installed, the room also holds two fully licenced bars and offers complimentary WIFI. This is the ideal facility for large conferencing events, sportsman's dinners, weddings, exhibitions and much more.



## Specification

*Detailed room specifications*

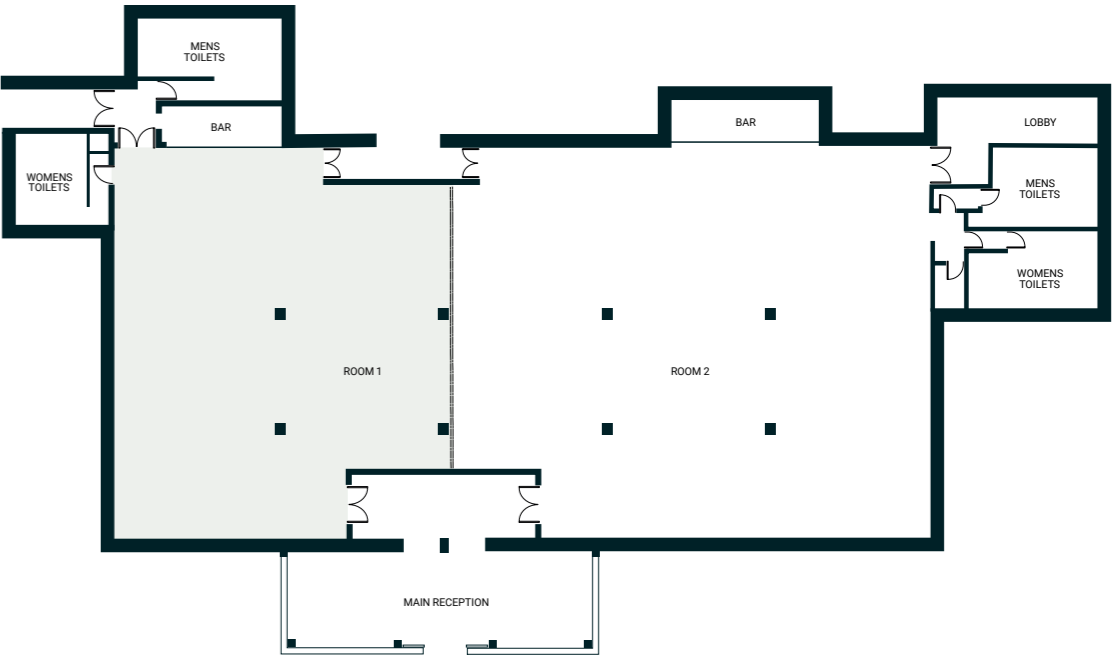
Maximum capacity	800
Minimum capacity	70
Ceiling height	2.8m
Space	37.3 x 18 - 670sqm
Power supply	22 double sockets & 2 three phase
Best feature	Largest function room in Stockport

## Theme Styles

*Capacity for event theme styles*

Theatre style	800
Cabaret	450
U - shape	150+
Board room	150+
Class room	150+
Exhibition	200 stands

## Floor plan



# Room 1 & 2

The 1883 can be split into two smaller rooms with the use of a sliding partition soundproof wall. Facilities in each room then include one licensed bar, complimentary WIFI and an integrated state of the art AV system. Either room is ideal for conferences, gala dinners, weddings, presentations, team building days and private events.



## Room 1

Detailed room specifications

Maximum capacity	300
Minimum capacity	30
Ceiling height	2.8m
Space	15.3 x 18 - 275sqm
Power supply	11 double sockets & 1 three phase
Best feature	State of the art AV system

## Theme Styles

Capacity for event theme styles

Theatre style	300
Cabaret	175
U - shape	50+
Board room	50+
Class room	50+
Exhibition	70 stands

## Room 2

Detailed room specifications

Maximum capacity	500
Minimum capacity	40
Ceiling height	2.8m
Space	21.9 x 18 - 394sqm
Power supply	11 double sockets & 1 three phase
Best feature	State of the art AV system

## Theme Styles

Capacity for event theme styles

Theatre style	500
Cabaret	275
U - shape	100+
Board room	100+
Class room	100+
Exhibition	130 stands

# THE CHEADLE

The Cheadle is one of our smaller event spaces, perfect for intimate functions and boardroom meetings. This lounge is located on the first floor and easily accessible from the main entrance, via the lift or stairs. It is directly next to the Hardcastle lounge, so both rooms can be booked, with one being used for a breakout room if needed. With access to the stands, this room is also used for hospitality events on match days too. With its own dedicated kitchen and bar, service is always quick and seamless, The Cheadle also has its own toilet facilities located just off the lobby area.



## Specification

Detailed room specifications

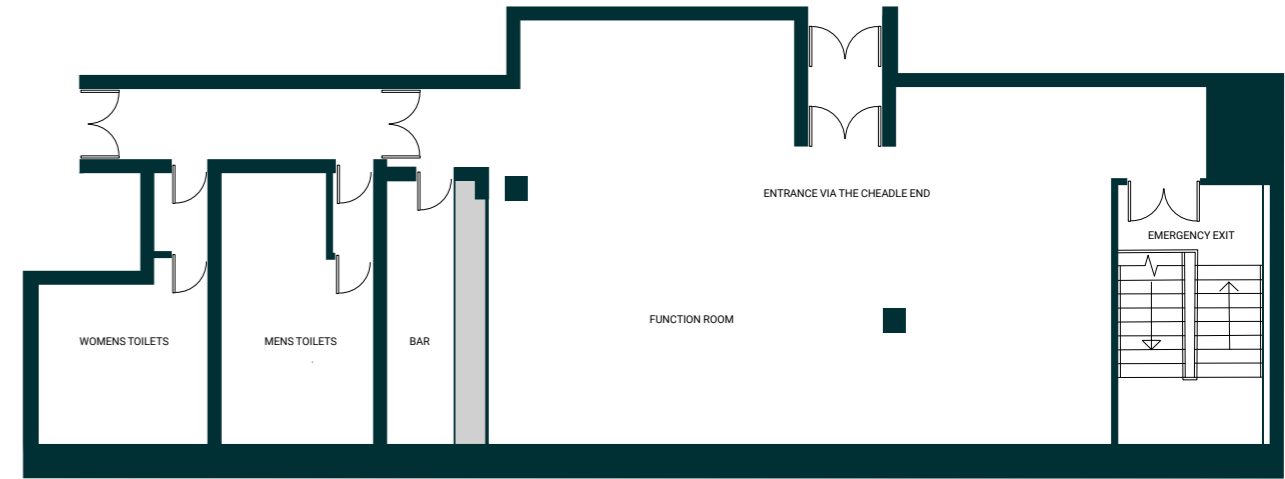
Maximum capacity	50
Minimum capacity	10
Ceiling height	2.9m
Space	12.5 x 8 - 100sqm
Power supply	8 double, 6 single sockets & 1 three phase
Best feature	Direct pitch access

## Theme Styles

Capacity for event theme styles

Theatre style	50
Cabaret	40
U - shape	40
Board room	30
Class room	15
Exhibition	10 stands

## Floor plan



# THE HARDCASTLE

The Hardcastle is ideal for conferences, parties, smaller weddings, christenings and networking events and with it being directly next to the Cheadle, both rooms can be booked and the Cheadle used for a breakout or set-up room. This lounge is located on the first floor and easily accessible from the main entrance via the lift or stairs, with dedicated toilet facilities located just off the lobby area. The Hardcastle provides direct access onto the pitch which makes it ideal for match day hospitality events. The lounge boasts its own state of the art AV system, kitchen and fully licenced bar which ensures simple and efficient service.



## Specification

*Detailed room specifications*

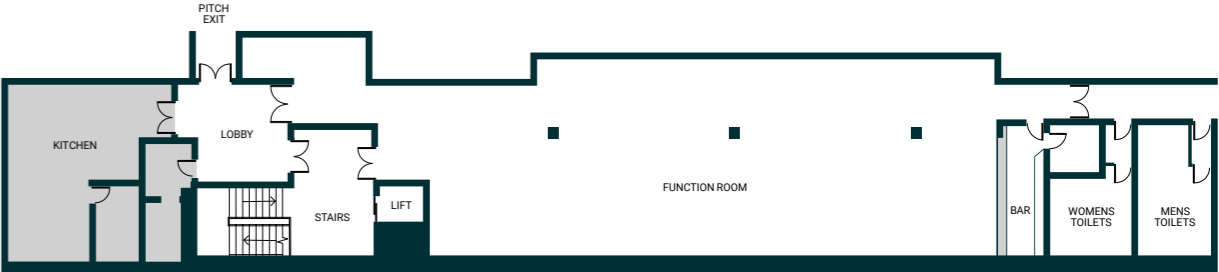
Maximum capacity	150
Minimum capacity	20
Ceiling height	2.9m
Space	26 x 8.2 - 213sqm
Power supply	11 double sockets
Best feature	Private kitchen and pitch access

## Theme Styles

*Capacity for event theme styles*

Theatre style	150
Cabaret	100
U - shape	50+
Board room	50+
Class room	50+
Exhibition	60 stands

## Floor plan



THE

FK

LOUNGE

The FK Lounge is a highly sought-after smaller event space overlooking the pitch. It's a truly unique space to hold a private dining experience, board meetings, intimate parties and much more. With such an incredible view over the historic pitch and floor to ceiling glass windows, any event held here won't be forgotten about quickly. The FK Lounge boasts its own private fully licenced bar to ensure our guests are never left waiting for a drink, private toilet facilities are also located just outside of the lounge. Our team know exactly how to create a memorable event in our iconic FK Lounge.



Specification

Detailed room specifications

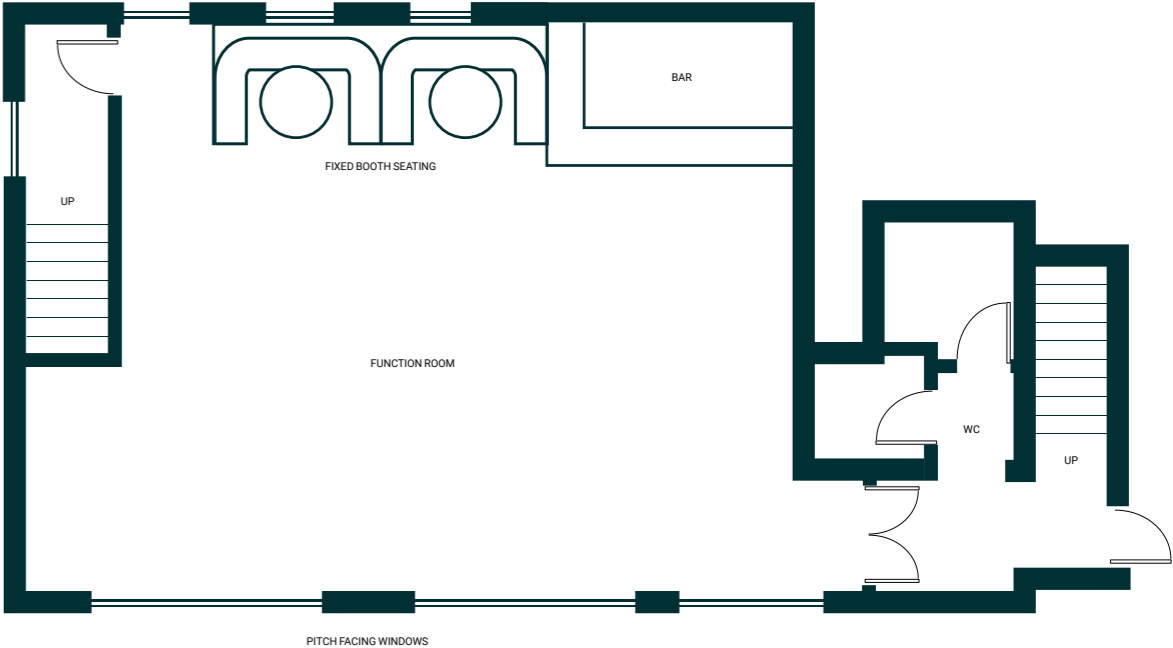
Maximum capacity	50
Minimum capacity	2
Ceiling height	2.5m
Space	90sqm
Power supply	10 double sockets
Best feature	Pitch view

Theme Styles

Capacity for event theme styles

Theatre style	40
Cabaret	40
U - shape	30
Board room	30
Class room	15
Exhibition	N/A

Floor plan



# THE PARETO

The Pareto has been newly refurbished with velvet alcoves, stylish leather seats and modern lighting throughout. This room can hold gatherings of up to 40 people, whether the occasion is a party, a dinner or a special event, The Pareto can cater to all. With a large private bar and heat lamp worktop, food and drink can be served directly from the room, making for a seamless event. You can access The Pareto directly off Hardcastle Road, through it's own exclusive entrance which is only a short walk from the stadium's private car park.



## Specification

Detailed room specifications

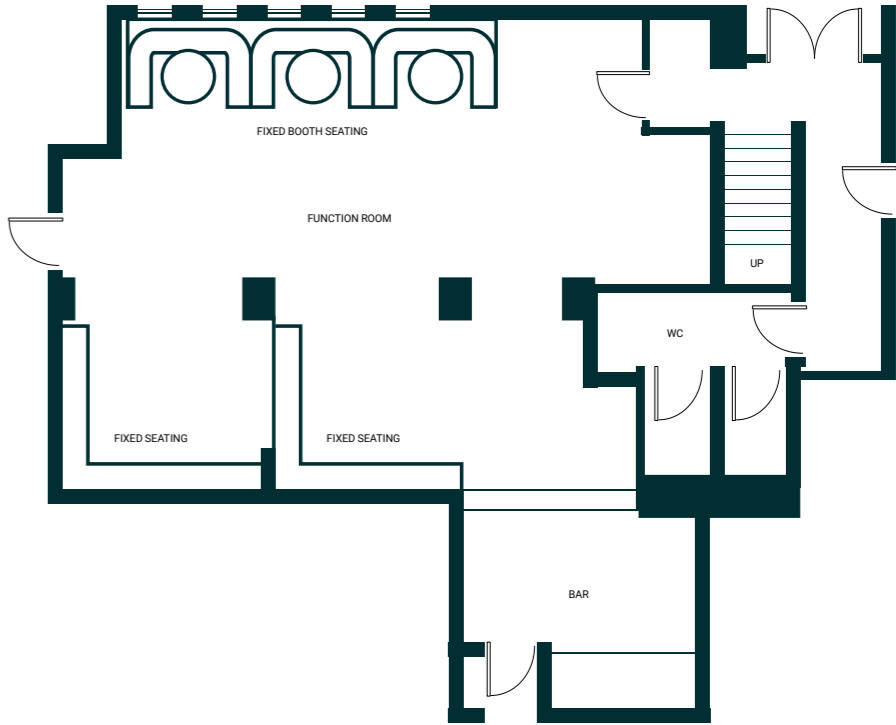
Maximum capacity	40
Minimum capacity	10
Ceiling height	2.1m
Space	59sqm
Power supply	7 double sockets
Best feature	Booth seating

## Theme Styles

Capacity for event theme styles

Theatre style	N/A
Cabaret	40
U - shape	N/A
Board room	20
Class room	40
Exhibition	N/A

## Floor plan



# VITA BAR

The Vita Bar is the perfect venue space if you're looking for something unique with a classy but laid-back atmosphere. The copper bar feature is the main attraction, along with the high bar stools and the impressive artwork on the walls, you're guaranteed to throw a memorable event in The Vita Bar. You can access the space directly off Hardcastle Road, through it's own exclusive entrance which is only a short walk from the stadium's private car park. The Vita Bar has previously been used for big birthdays, podcast filming, football awards nights and company get togethers.



## Specification

*Detailed room specifications*

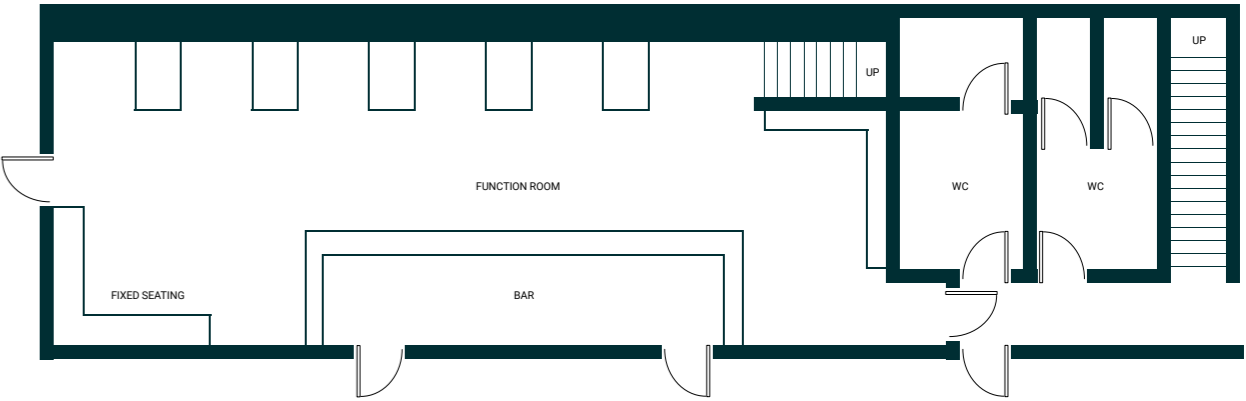
Maximum capacity	50
Minimum capacity	10
Ceiling height	3m
Space	40sqm
Power supply	7 double sockets
Best feature	The copper bar

## Theme Styles

*Capacity for event theme styles*

Theatre style	N/A
Cabaret	N/A
U - shape	N/A
Board room	N/A
Class room	N/A
Exhibition	N/A

## Floor plan



# THE BOARDROOM

The Boardroom is one of our smaller more intimate rooms, perfect for gatherings or meetings of up to 25 people. The room can be laid out in a traditional meeting room setting with one large table in the centre of the room, in theatre style if you're presenting or in a restaurant layout using the individual tables. The Boardroom also boasts its own private bar area as well as a heat lamp worktop, so food and drinks can be served directly from the room itself. The boardroom has previously been used for baby showers, board meetings, intimate dinners and community social well-being programmes.



## Specification

Detailed room specifications

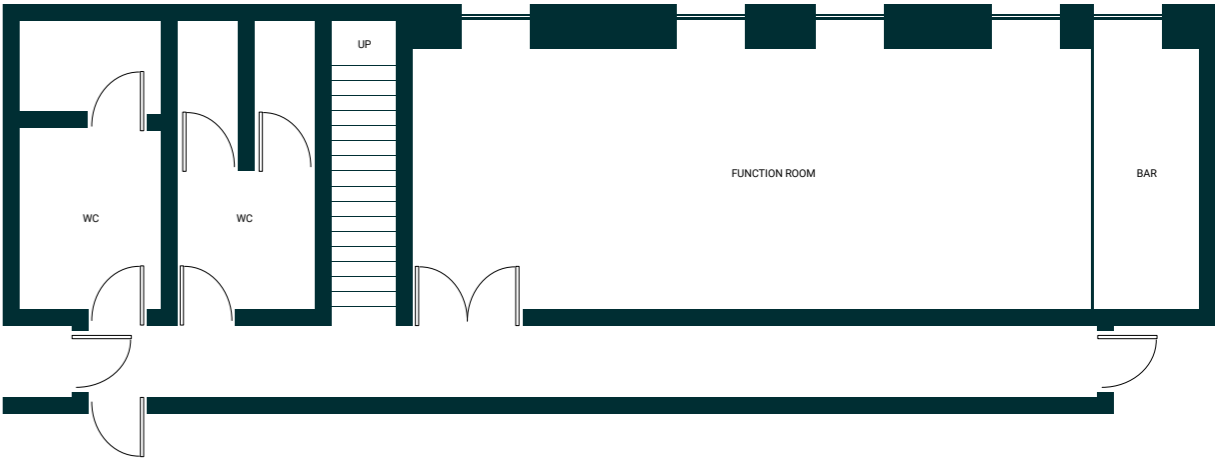
Maximum capacity	25
Minimum capacity	5
Ceiling height	2.7m
Space	25sqm
Power supply	6 double sockets
Best feature	Private space

## Theme Styles

Capacity for event theme styles

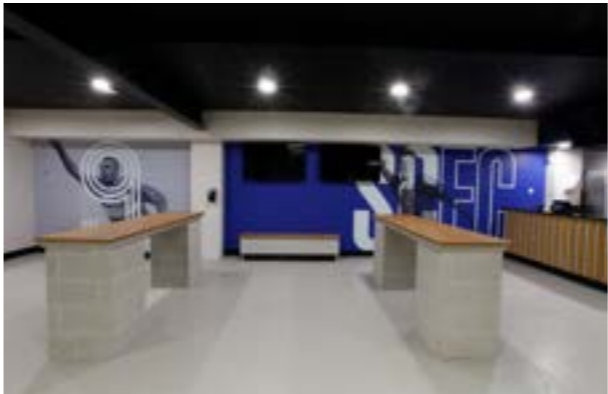
Theatre style	25
Cabaret	20
U - shape	20
Board room	25
Class room	20
Exhibition	N/A

## Floor plan



# THE CONCOURSE

Our newly refurbished concourse area is the perfect place for an event with a difference. The design is inspired by the iconic New York Subways, with a modern layout and stylish finishes, this space can be used to create the most extraordinary events. This area has the bonus of the three matchday food outlets along with several separate bars, perfect for providing an array of food and drink at your event. Our team can work with you to create incredible events such as; birthday parties, gigs, beer festivals, family fun days, exhibitions, special occasion parties and much more.



## Specification

Detailed room specifications

Maximum capacity	750
Minimum capacity	100
Ceiling height	3.1m
Space	729sqm
Power supply	8 double sockets
Best feature	NYC subway themed space

## Theme Styles

Capacity for event theme styles

Theatre style	N/A
Cabaret	N/A
U - shape	N/A
Board room	N/A
Class room	N/A
Exhibition	N/A

## Floor plan



# THE PITCH

A unique opportunity we offer at Edgeley Park is the chance to hire our pitch. In the past we've held successful music festivals and gigs, as well as family fun days and charity matches. It's also perfect for corporate team building activities, coupled with the use of our conference and event space's for presentations and breakout sessions. For events which require substantial set up, there's direct access to our private carpark through large gates, making it easier to manoeuvre any big equipment or HGV's. There are several food and drink options that are available with pitch hire, including the match day kiosks, or if you would prefer to dine in our indoor areas, we have plenty of options for this too.



## Specification

Detailed room specifications

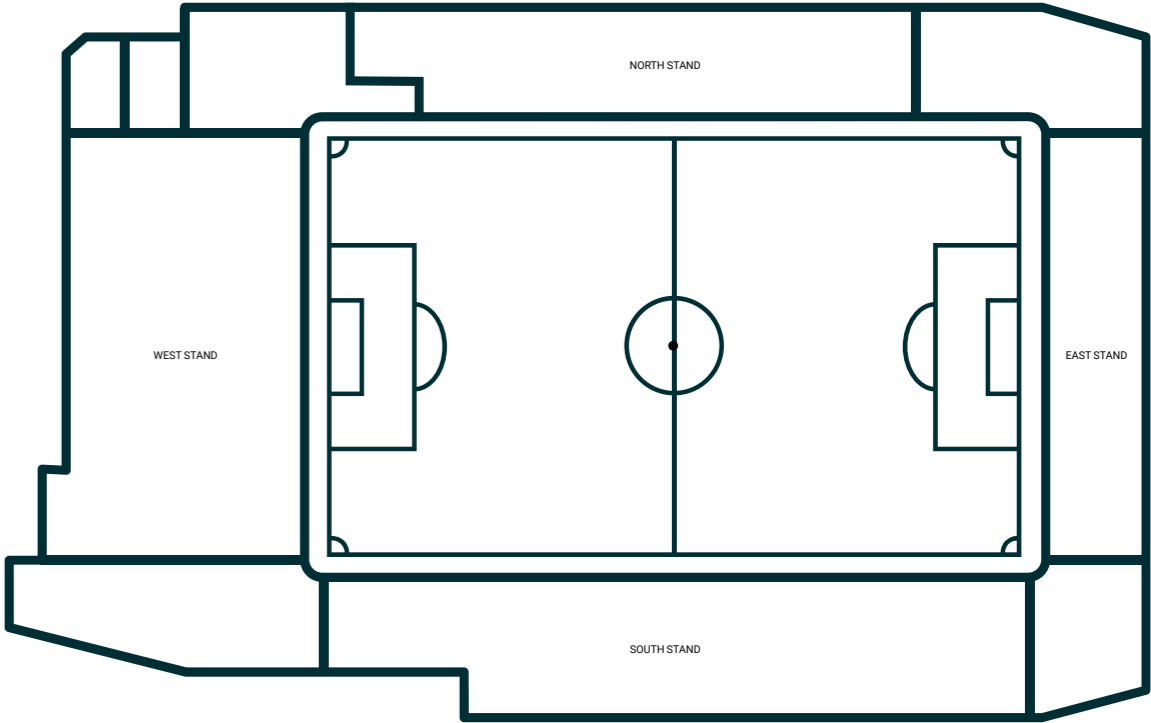
Maximum capacity	19,000
Space	7,000sqm
Best feature	Multi-functional outdoor arena

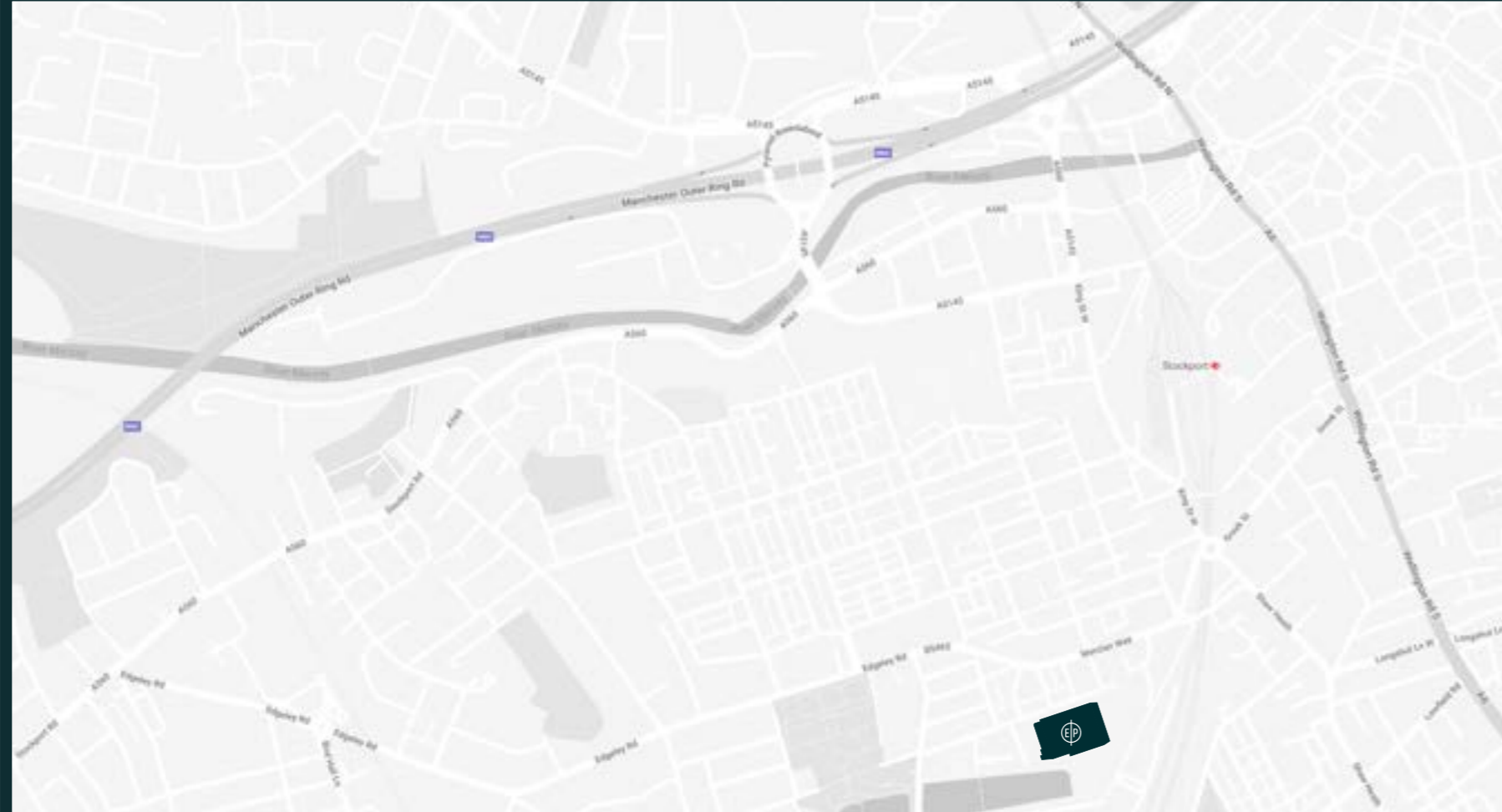
## Theme Styles

Capacity for event theme styles

Music festival	19,000 - 12,000 standing & 7,000 seated
Food festival	40 food stalls, main stage & big top
Cinema night	10,000 seated or 150 cars

## Floor plan





## Travelling to Edgeley Park

*Just off the M60 and close to Stockport train station, Edgeley Park is a great location for any event.*

Edgeley Park is minutes from Stockport train station and junction 1 of the M60 Manchester ring road. For those travelling by train, expected travel time from Manchester is 10 minutes and 1 hour 50 minutes from London.




Edgeley Park, Hardcastle Rd, Stockport, SK3 9DD.

## Get in Touch

*Our team will be happy to answer any questions you have about planning your own event.*

To discuss your event requirements in detail, give us a call or email the team directly.  
We endeavour to respond to all enquiries within 24 hours.

edgeleypark.com ☎ events@edgeleypark.com ☎ 0161 266 2700

 facebook.com/edgeleyparkevents    @edgeleypark    linkedin.com/company/edgeleypark

