

INDUSTRIA

WILLIAMSBURG

WILLIAMSBURG, BROOKLYN

29-39 South 5th Street

Founded in 1991, Industria revolutionized the photo and event industry as the first multi-studio complex of its kind in the New York City. Today, in addition to the iconic West Village location, Industria boasts a brand new outpost in the burgeoning neighborhood of Williamsburg, Brooklyn.

Offering exceptional and versatile facilities, the studios are designed for a variety of events - including private parties, celebrations, weddings, exhibitions, conferences, product launches, and festivals.

Embedded within an incredibly vibrant area, Industria Williamsburg is nestled under the Williamsburg Bridge, the new waterfront Domino Park and is only a subway stop from Manhattan.

Please visit us!



Transportation: 5 min. drive from Manhattan, subway lines L,J,M,Z, East River Ferry





29-39 SOUTH 5TH ST

Beneath the Williamsburg Bridge, a 10,000 sqft warehouse turned into a stunning event space with exceptionally high ceilings, multiple entrances and mezzanines.

South 5th offers 4 studios, Studio 1 through 4, and a lobby for a total of 10,000 sq ft of space. Clients may rent Studios 1 + 2 , Studios 3 + 4 or the entire building.

SIZE

10,000 sq ft

CEILING HIGHT

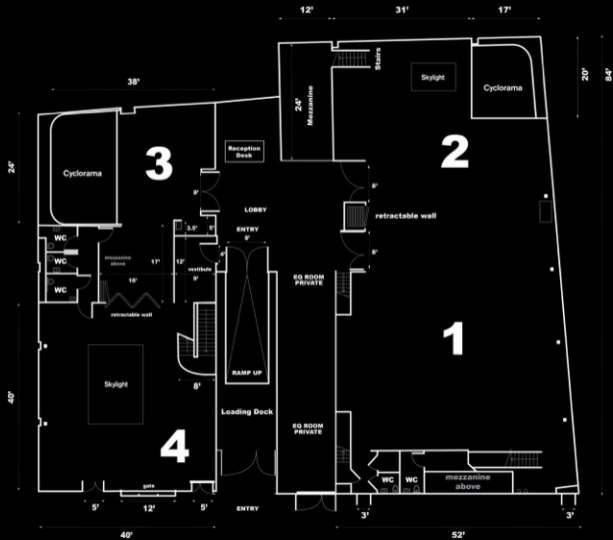
25 ft (rigging capability)

POWER

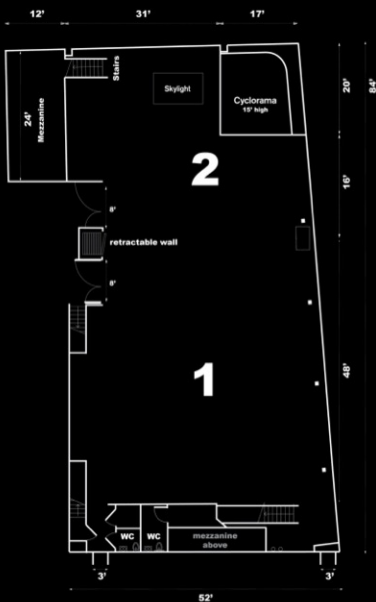
800 amp 3-phase power

ADDITIONAL NOTES

Ground level with multiple street access points and drive-in capable photo and event space. Private loading dock. Two cycloramas. Retractable walls to partition the space according to client needs. Column-free.







STUDIOS 1 + 2

SIZE

4,500 sq ft open, column-free space

CEILING HEIGHT

25 ft (rigging capability)

POWER

4x 100 amp 3-phase power

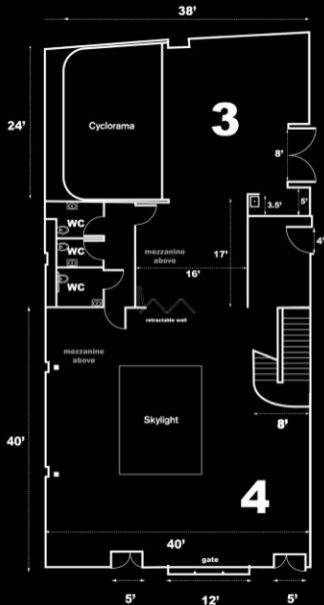
ADDITIONAL NOTES

Ground level with street access. Drive-in capable photo and event space. Private loading dock. Two furnished mezzanines. Access to private bathrooms and shower. Column-free. Conference room available. Retractable wall may be used to partition the space









STUDIOS 3 + 4

SIZE

Studio 3 - 1500 sq ft

Studio 4 - 2000 sq ft + 600 sq ft furnished mezzanine

Combined - 3500 sq ft + mezzanine

CEILING HEIGHT

25 ft (rigging capability)

POWER

4x 100 amp 3-phase power

ADDITIONAL NOTES

Column-less. Huge skylight with black-out capability in Studio 4. Private ground floor building with direct street access and private entrances. Drive-in capable. Retractable wall.









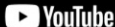
EVENTS GALLERY
29-39 South 5th Street



PORSCHE

Google

GUCCI



SONY



REFINERY29



PANTONE



NYFW THE SHOWS

GLADSTONE



TARGET

BOTTEGA VENETA



TIFFANY & CO.



THE WALL STREET JOURNAL



ZEGNA



RALPH LAUREN



Mercedes-Benz



Jimmy Parkham

BOBBI BROWN



FENTY BEAUTY















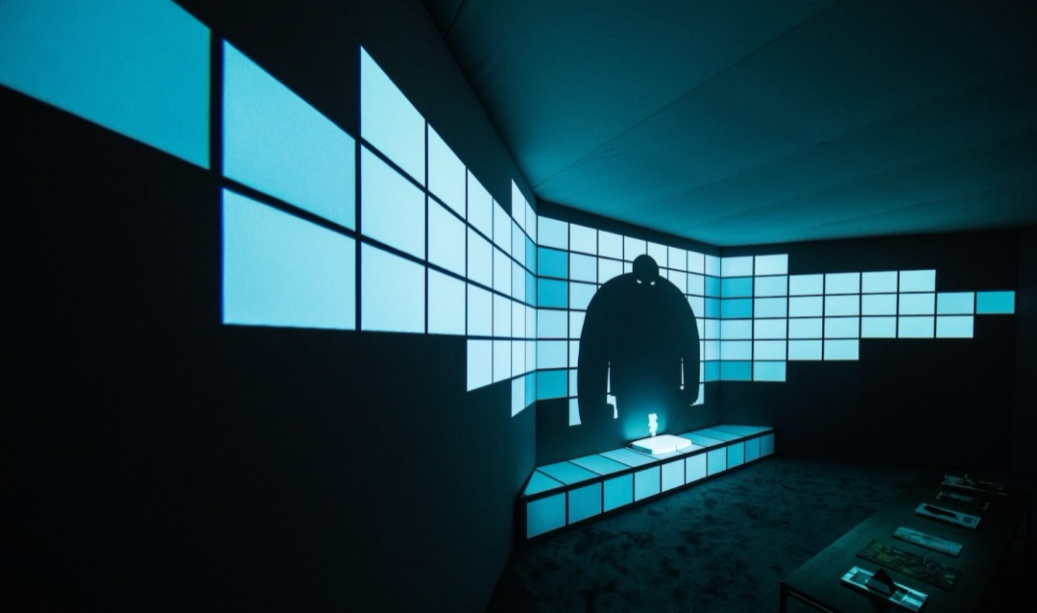


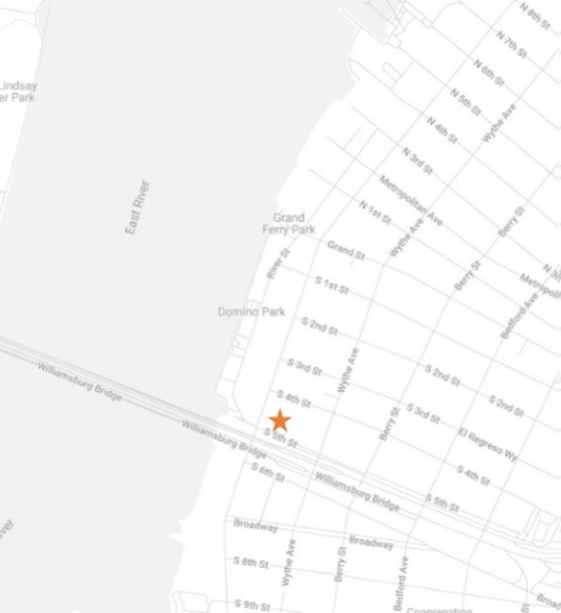


Bedford Avenue









THANK YOU

CONTACT:

212.366.1114

events@industrianyc.com

www.industrianyc.com

Subway: L at Bedford Ave, J M Z at Marcy Ave
East River Ferry, South Williamsburg
5-minute drive from Manhattan