

**BEHIND THE BIKE SHED**

**EVENT SPACE**

**384, OLD STREET, SHOREDITCH, EC1V 9LT**



The background image shows a modern retail space with large, angular white display structures. On these structures, various clothing items are displayed, including jackets and trousers. The floor is polished and reflective. The ceiling is high and features exposed brickwork and industrial-style lighting rigs with spotlights. The overall atmosphere is clean, minimalist, and industrial.

## **ABOUT US**

**THE BIKE SHED IS BASED IN THE HEART OF SHOREDITCH, BOASTING 4 LARGE REDEVELOPED RAILWAY ARCHES SPANNING 12,000SQFT WITH ITS OWN 30M PRIVATE ROAD. ARCHES 3 & 4 ARE AVAILABLE FOR DRY HIRE, EACH HAVE UNDERFLOOR HEATING, INDUSTRIAL CONCRETE FLOORS, 3 PHASE POWER AND WATER ACCESS POINTS. THE ARCHES HAVE BEEN RENOVATED TO THE HIGHEST STANDARD, WHILST KEEPING THE ORIGINAL FEATURES AND PROVIDING A VERSATILE BLANK CANVAS FOR A VARIETY OF EVENTS.**



# **A VERSATILE SPACE**

## **PERFECT FOR...**

- ≡ CONFERENCES**
- ≡ NETWORKING EVENTS**
- ≡ TEAM AWAY DAYS**
- ≡ IMMERSIVE EVENTS**
- ≡ POP-UPS**
- ≡ PRODUCT LAUNCHES**
- ≡ CAR LAUNCHES**
- ≡ PRIVATE DINING**
- ≡ WEDDINGS**
- ≡ CHRISTMAS PARTIES**
- ≡ BIRTHDAY PARTIES**
- ≡ FILM/PHOTO SHOOTS**
- ≡ PRESS DAYS**
- ≡ MUSIC EVENTS**
- ≡ SCREENINGS**
- ≡ FASHION SHOWS**

---

**WE ALLOW EXTERNAL CATERING SUPPLIERS (SUBJECT TO RESTRICTIONS) & DON'T CHARGE CORKAGE FEES.**

**WE WORK WITH IN-HOUSE AV SUPPLIERS VISUAL ELEMENTS WHO CAN PROVIDE AS MUCH (OR AS LITTLE) AV SUPPORT TO HELP CREATE YOUR VISION.**



# **VENUE SPECIFICATIONS**

## **ARCH 3**

**1680 SQFT / 156 SQM**

**CAPACITY UP TO 200 PEOPLE**

**PRO RIGGING 200KG PER POINT**

**2 X 63 A 3 PHASE**

**1 X 32 A 3 PHASE**

**1 X 16 A 3 PHASE**

**J RAIL HANGING SYSTEM**

**UNDERFLOOR HEATING**

**INDUSTRIAL CONCRETE FLOOR**

**ACCESS TO WATER AND DRAINAGE**

**VEHICLE ACCESS**

**DISABLED ACCESS**

## **ARCH 4**

**2200 SQFT / 204 SQM**

**CAPACITY UP TO 200 PEOPLE**

**PRO RIGGING 200KG PER POINT**

**2 X 63 A 3 PHASE**

**1 X 32 A 3 PHASE**

**1 X 16 A 3 PHASE**

**J RAIL HANGING SYSTEM**

**UNDERFLOOR HEATING**

**INDUSTRIAL CONCRETE FLOOR**

**ACCESS TO WATER AND DRAINAGE**

**UPSTAIRS GALLERY 250 SQFT**

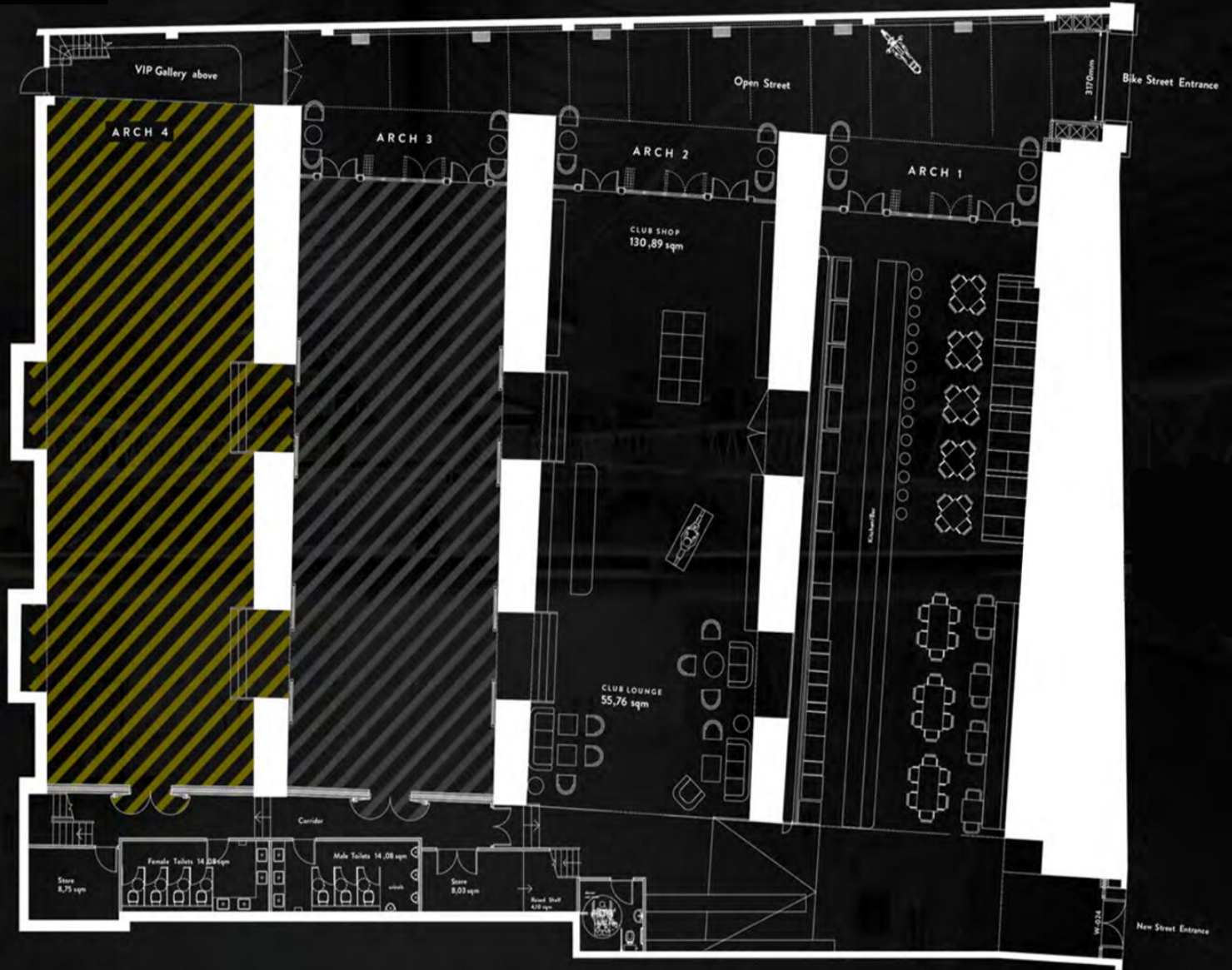
**DISABLED ACCESS**

**| IF BOTH ARCHES ARE HIRED EXCLUSIVE OUTSIDE SPACE IS INCLUDED |**

## FLOOR PLAN

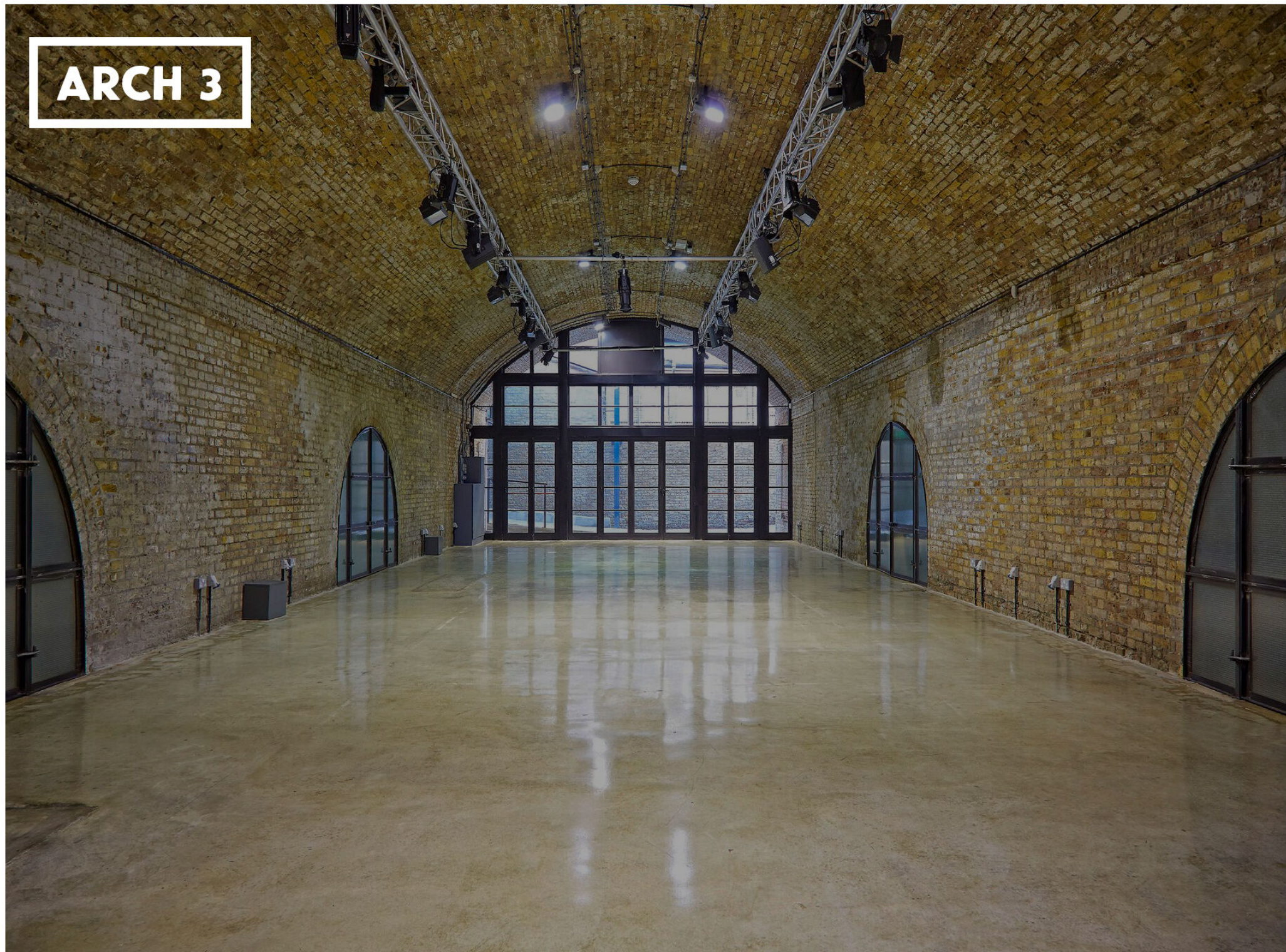
**156 SQM**

 **222 SQM**



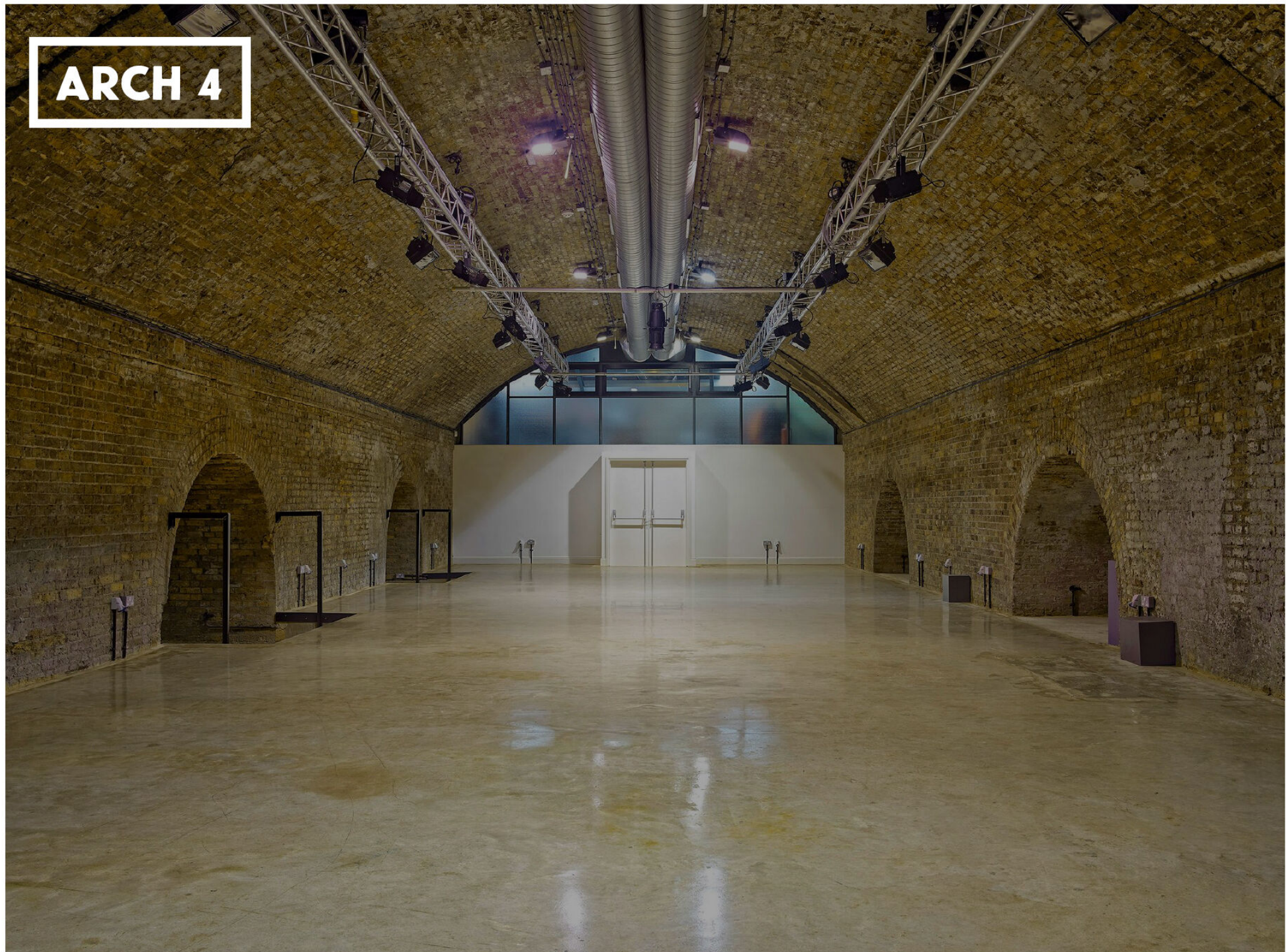


# ARCH 3





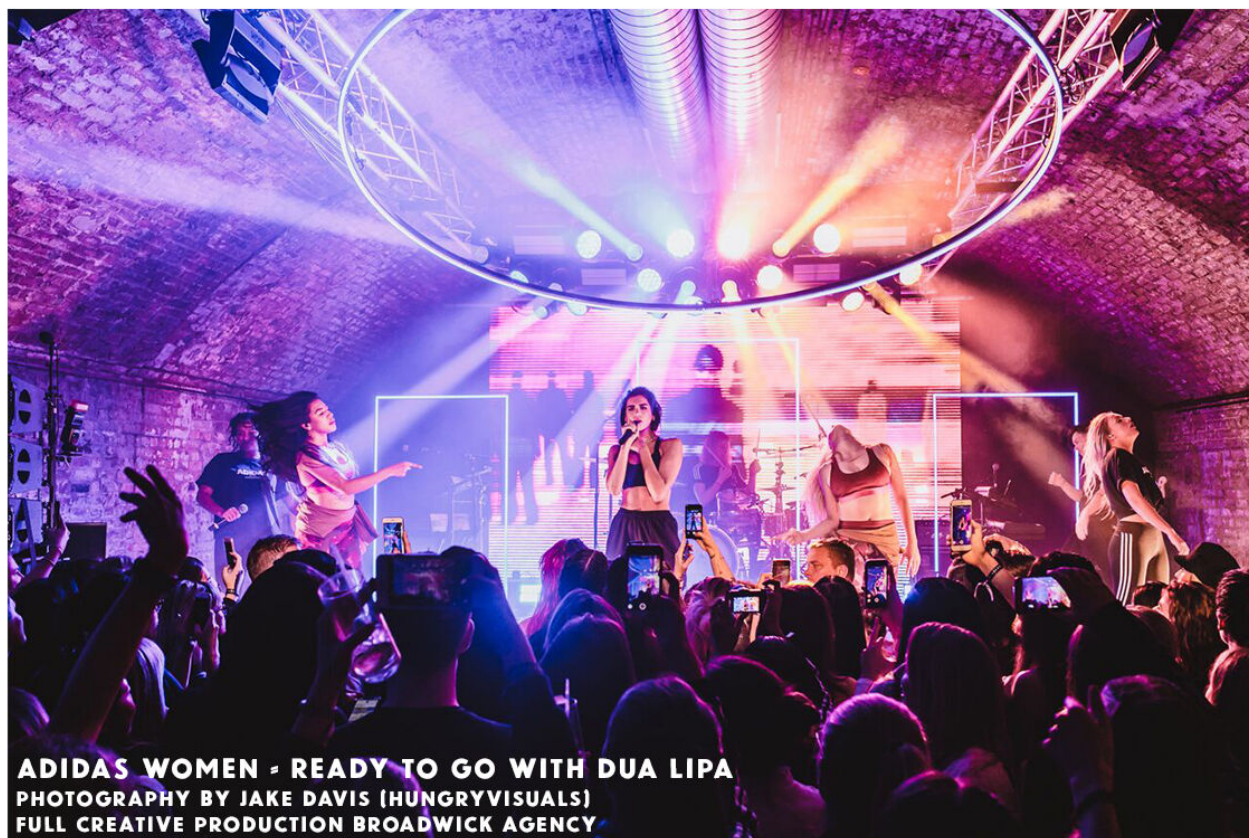
# ARCH 4







**MTV REUNION PARTY**



**ADIDAS WOMEN - READY TO GO WITH DUA LIPA**  
PHOTOGRAPHY BY JAKE DAVIS (HUNGRYVISUALS)  
FULL CREATIVE PRODUCTION BROADWICK AGENCY



**ADOBE CREATIVE MEET-UP**

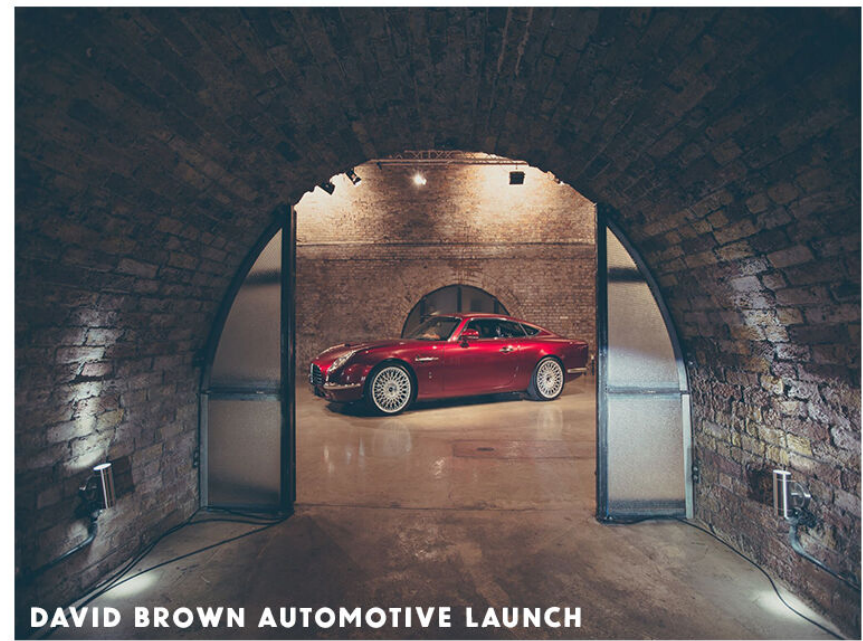


**ALLIANZ HACKATHON**





**BEHIND THE BIKE SHED OPEN EVENING**



**DAVID BROWN AUTOMOTIVE LAUNCH**



**ADIDAS WOMEN - READY TO GO**  
PHOTOGRAPHY BY JAKE DAVIS (HUNGRYVISUALS)  
FULL CREATIVE PRODUCTION BROADWICK AGENCY



**ADOBE CREATIVE MEET-UP**





## ADDRESS

**384, OLD STREET - SHOREDITCH - EC1V 9LT**

**OVERGROUND**  
**SHOREDITCH HIGH STREET**

**TUBE**  
**OLD STREET**  
**LIVERPOOL STREET**

**BUS**  
**242, 35, 26, 48, 55, 243, 149,**  
**67, 47, 78, 135, 205**



# PREVIOUS CLIENTS







**CONTACT US**

**EVENTS@THEBIKESHED.CC**

**020 7729 8114 (EXT 2) | MON - FRI**