

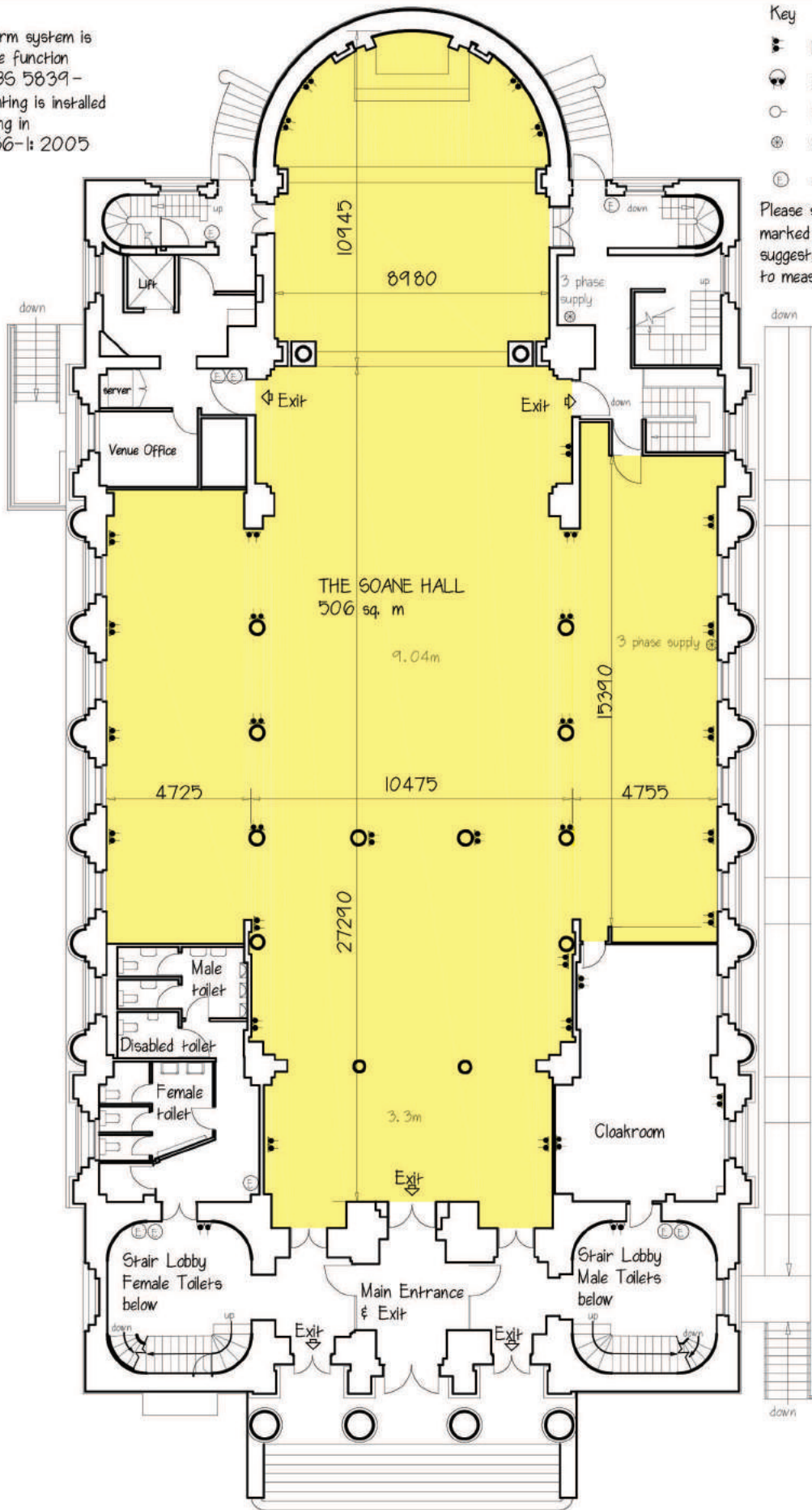
NOTE

A fully automatic fire alarm system is fitted to the whole of the function area in accordance with BS 5839-1: 2002. Emergency lighting is installed to the whole of the building in accordance with BS 5266-1: 2005

Key

- 13A electrical outlets
- 13A ceiling outlet
- House & emergency lighting
- ⊕ 63amp 3 phase supply
- ⓔ extinguisher

Please see specific ceiling heights marked in metres (M) - always suggested for production companies to measure themselves.



One Marylebone,
1 Marylebone Road,
London, NW1 4AQ

Ground Floor Plan with removable walls stacked

SCALE

1-200

DATE

2014

0 1 2 3 4 5m