

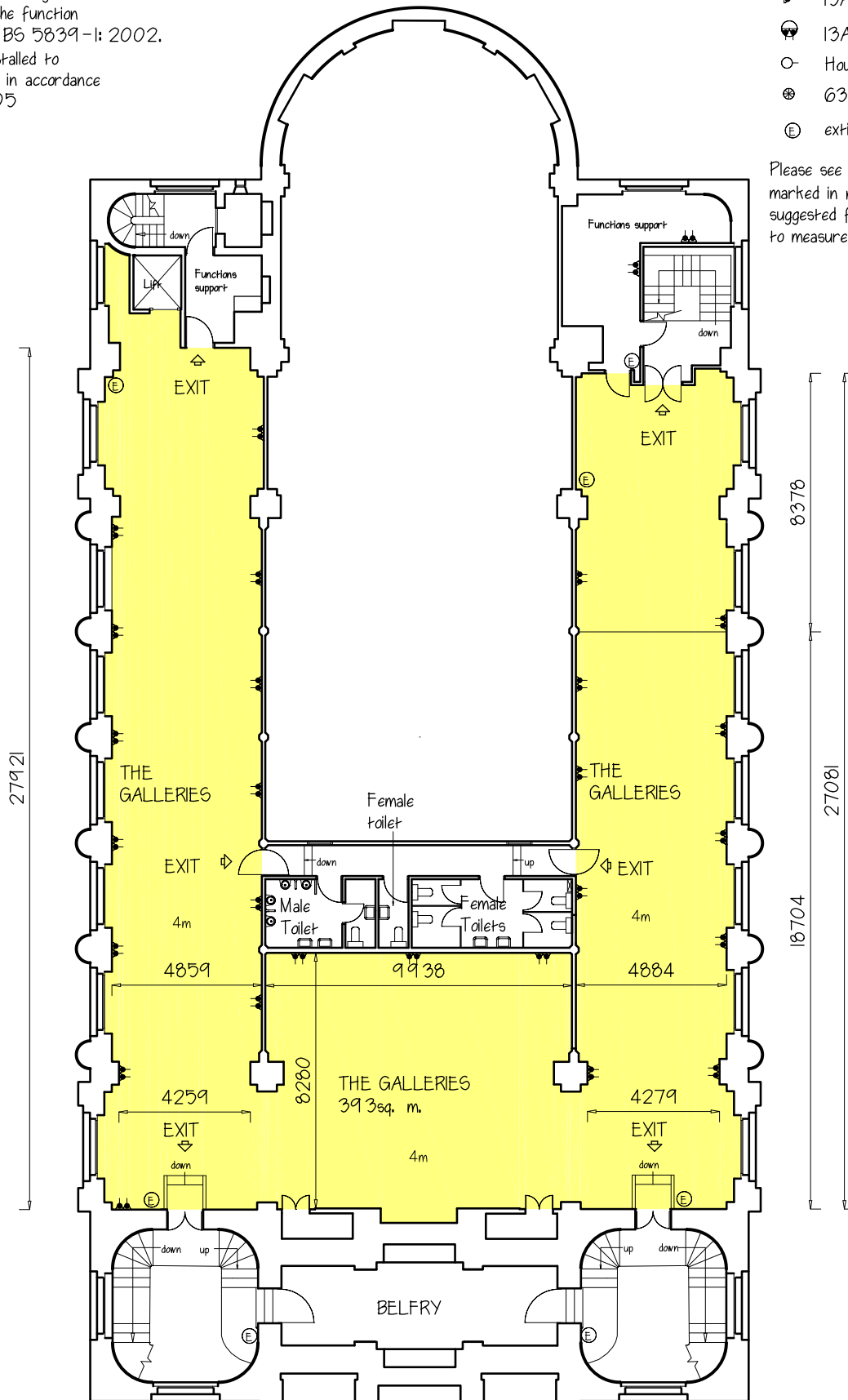
NOTE

A fully automatic fire alarm system is fitted to the whole of the function area in accordance with BS 5839-1: 2002.
 Emergency lighting is installed to the whole of the building in accordance with BS 5266-1: 2005

Key

- ▶ 13A electrical outlets
- ⊙ 13A ceiling outlet
- House & emergency lighting
- ⊗ 63amp 3 phase supply
- ⓔ extinguisher

Please see specific ceiling heights marked in metres (M) - always suggested for production companies to measure themselves.



One Marylebone,
 1 Marylebone Road,
 London, NW1 4AQ

First Floor Plan

SCALE

1:200

DATE

2014

