




THE GREENWICH YACHT CLUB

CONFERENCES 2026



A photograph of a wooden sailing boat on a pebbly shore. The boat is dark brown with a white stripe along the hull. Its mast is tall and has many ropes attached. In the background, there is a modern building with large windows and a balcony, situated on a pier or dock. The sky is blue with some clouds.

We are delighted to introduce you to The Greenwich Yacht Club. GYC is London's hidden riverside gem located next to the O2. The Club has 2 stunning event spaces available for hire throughout the year for 20 to 200 guests making it the perfect venue for meetings, conferences, and corporate lunches.

.....These Venues are called The River Rooms and The Clubhouse. Both venues have floor to ceiling windows and offer an abundance of natural daylight and outstanding views of the river.

The members clubhouse, with it's iconic views, has been hired for senior management meetings and team conferences as well client presentations and really lands a wow factor to any meeting. The venue has a main plenary area along with a breakout space at the back of the room with a balcony overlooking the river and london skyline.



The River Rooms is our stand alone event space perfect for meeting and presentations as well as team building activities with it's large outdoor decking area. It has a main plenary room suitable for 100 theatre style seating and a relaxing reception area that can be used for breakout space or a networking lunch area. Air conditioning is available along with a flexible AV set up.

Both venues have all facilities that you would need for your meetings and you can even open the members bar afterwork for a relaxed finish to your day.



THE GREENWICH YACHT CLUB

THE RIVER ROOMS

The River Rooms is our dedicated event space made up of 3 adjoining spaces.

- **The main hall**
- **The reception hall**
- **The outdoor decking**

The rooms are hired as one and allow your event to flow seamlessly from one element to the next.



THE RECEPTION HALL

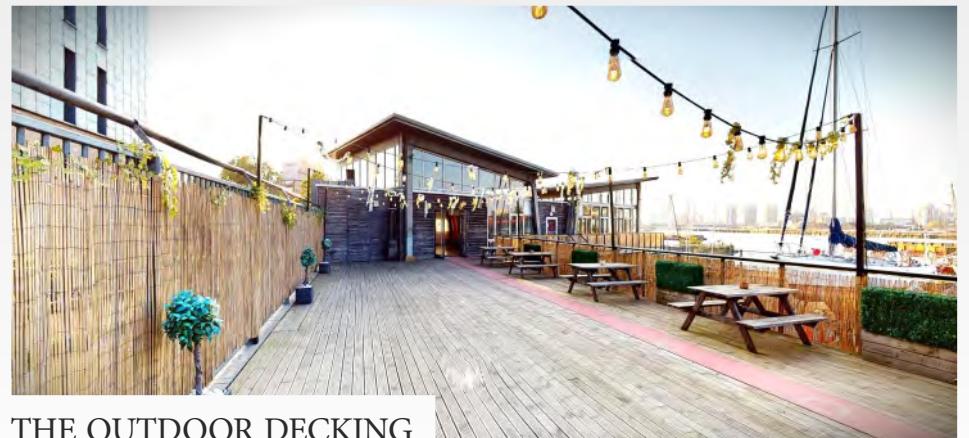
The lounge bar gives everyone a place to relax and enjoy a drink whilst they mingle.

Our main hall is the perfect space for either meetings, conferences, corporate lunches and celebrations.



THE MAIN HALL

The sun terrace allows your guests to enjoy the weather



THE OUTDOOR DECKING



THE GREENWICH YACHT CLUB

THE RIVER ROOMS

The River Rooms conference package

Includes the Following:

- Exclusive use from 9am to 5pm
- Early access for organiser permitted
- All tables, chairs and linen
- 2x A1 Flip charts with pads and pens
- Projector and screen
- Microphone and PA
- Unlimited teas, coffees, biscuits, mineral water and fruit juice
- Cold finger buffet lunch (see catering page)
- Staff
- Free parking for up to 15 cars
- Cleaning

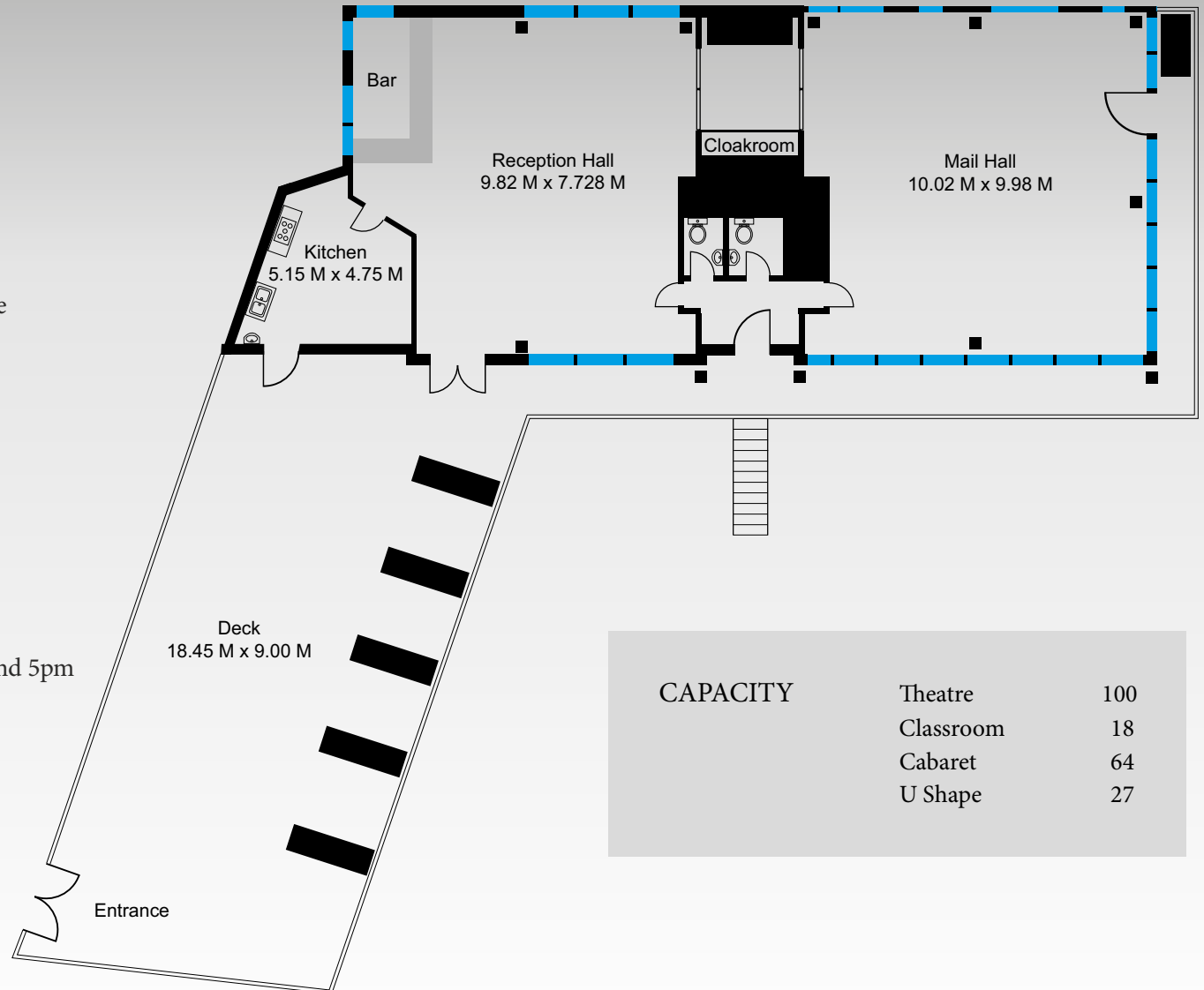
Day Delegate Rate - £70 per person

Prices are based on a minimum number of 20 delegates

Or build your own package:

- Venue hire £150/hour, Monday to Thursday, between 9am and 5pm
- Projector and Screen - £75
- A1 Flipcharts with pads and pens - £20 each
- Tea, coffee, juice and mineral water
- £4 per person per serving
- Working cold buffet Lunch - £20/person

ALL PRICES ARE SUBJECT TO VAT AT THE CURRENT RATE



CAPACITY

| | |
|-----------|-----|
| Theatre | 100 |
| Classroom | 18 |
| Cabaret | 64 |
| U Shape | 27 |



THE GREENWICH YACHT CLUB

THE CLUBHOUSE

The Clubhouse, uniquely in London, is a building situated in the Thames. Guests can walk across the short bridge or arrive by boat on the private pontoon at the front of the building.

Once inside the first thing you will notice is the stunning panoramic views of the river and some of Londons Iconic landmarks. The O2 and cable car, The Thames Barrier and the fantastic city vista provide guests with the feeling that they are in the heart of modern London.

Concertina doors and a completely surrounding balcony means that guests can enjoy the river views to their hearts content.

Boating flags and nautical treasures adorn the ceiling and walls giving the hall a definite yachting theme and a breathtaking backdrop for your wedding.





THE GREENWICH YACHT CLUB

THE CLUBHOUSE

The Clubhouse conference package

Includes the Following:

- Exclusive use from 9am to 5pm
- Early access for organiser permitted
- All tables and chairs
- 2x A1 Flip charts with pads and pens
- Projector and screen
- Microphone and PA
- Unlimited teas, coffees, biscuits, mineral water and fruit juice
- Cold finger buffet lunch (see catering page)
- Staff
- Free parking for up to 15 cars
- Cleaning

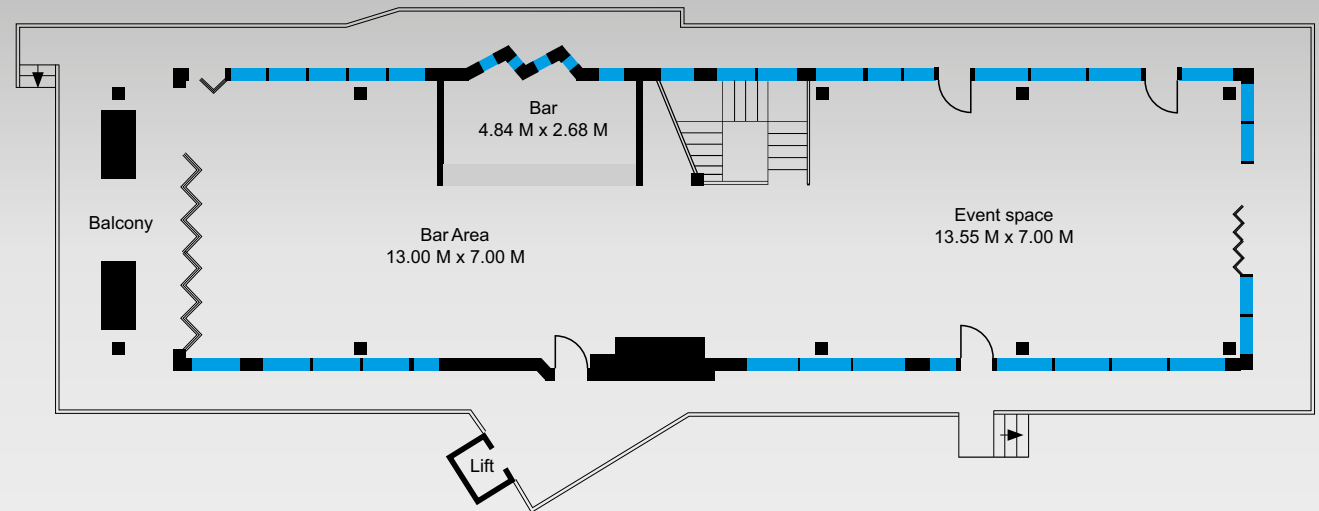
Day Delegate Rate - £70 per person

Prices are based on a minimum number of 20 delegates

Or build your own package:

- Venue hire £150/hour, Monday to Thursday, between 9am and 5pm
- Projector and Screen - £75
- A1 Flipcharts with pads and pens - £20 each
- Tea, coffee, juice and mineral water
- £4 per person per serving
- Working cold buffet Lunch - £20/person

ALL PRICES ARE SUBJECT TO VAT AT THE CURRENT RATE



| CAPACITY | Standing | 100 |
|----------|-----------|-----|
| | Theatre | 60 |
| | Boardroom | 22 |
| | Cabaret | 36 |
| | U Shape | 32 |

CATERING





THE GREENWICH YACHT CLUB

CATERING

Our working lunch is both delicious and nutritional and can be served for all dietary requirements. Sandwiches have a wide range of fillings on a selection of artisan breads that vary per season.



It includes the following:

Sandwiches - 1 round per person

Finger Buffet - 3 items per person

Tortilla Chips with salsa dip

Cake & dessert - 1.5 portions per person

If you would prefer something hot or a plated cold fork buffet please ask for options.

Example pricing:

Cold fork buffet - £20/person supplement

Hot fork buffet - £35/person supplement (30 pax minimum)

Optional extras:

Morning mini pastries (3) - £9/person supplement (60 pax maximum)

Bacon and sausage rolls - £12/person supplement (30 pax minimum)

Continental Breakfast - £22/person supplement

Continental breakfast includes one of each item per person

Open mini half bagel with cream cheese & smoked salmon

Mini croissant & butter

Mini Danish pastry

Cut fruit mini pot

Orange juice



THE GREENWICH YACHT CLUB

POST CONFERENCE OPTIONS

Drinks and Nibbles:

It is often useful to finish a formal day with an informal get together and at the Greenwich Yacht club you don't even need to leave the building.

We have in built bars in both our venues serving a wide variety of soft and alcoholic drinks.

We can also provide some nibbles or even canapes if you are looking for something more refined.

If you would like to have some drinks afterwards from our bar the costs are as follows:

£100 + VAT/hour to keep the venue open and open the bar facility

Drinks can be on a tab or paid by individuals

Post Meeting Fine Dining:

You may be entertaining clients and wish to offer them a fine dining experience then we can also cater for this.

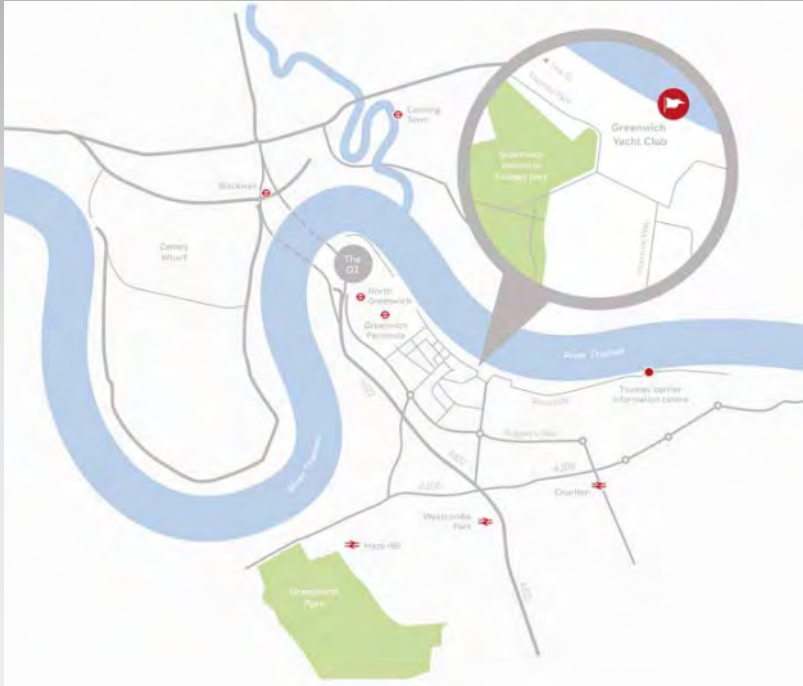
You can even hire the 2nd venue to break up the day from the evening.

For more options on this please ask one of the sales team.

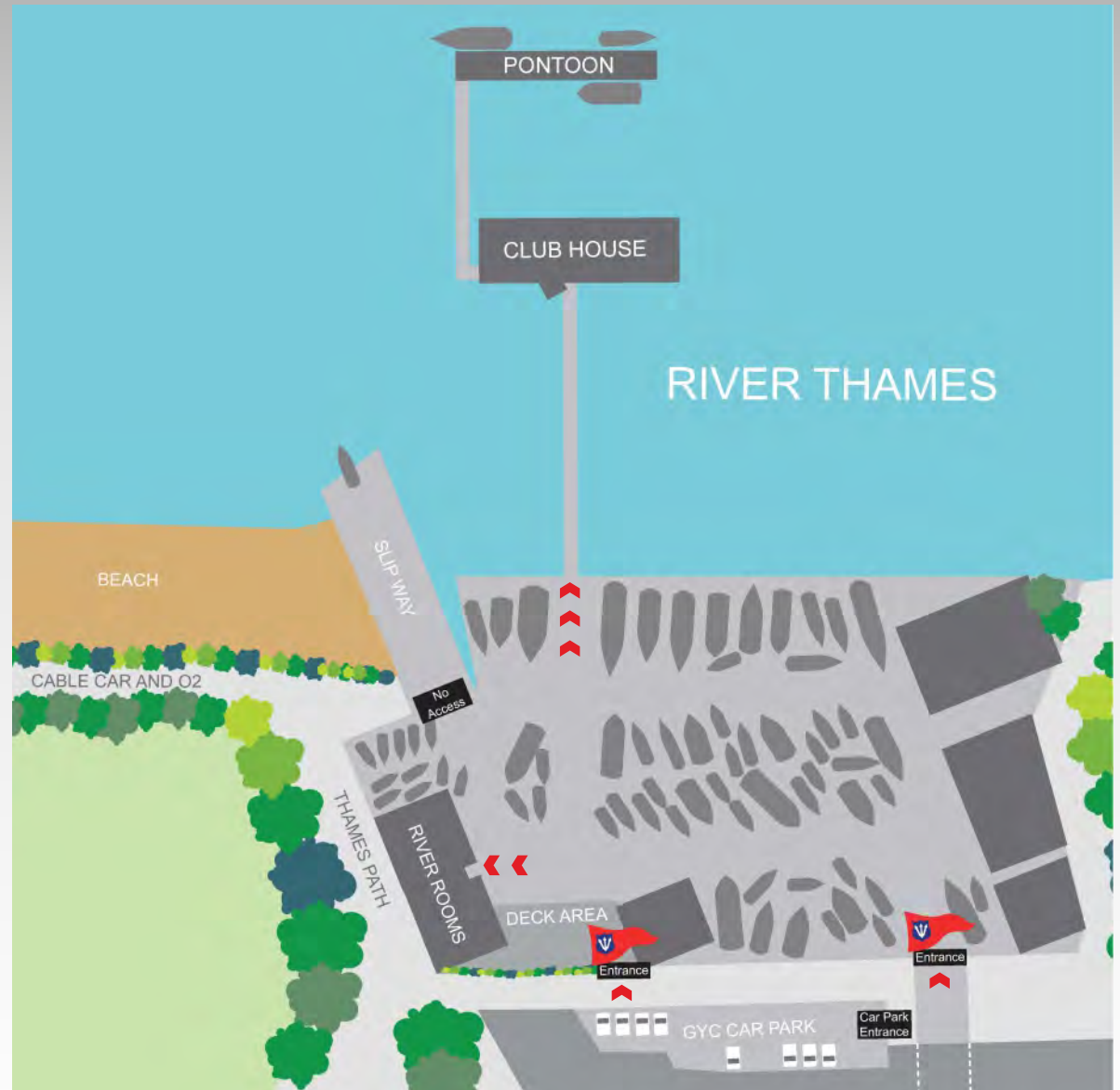


THE GREENWICH YACHT CLUB

HOW TO FIND US



Greenwich Yacht Club
1 Peartree Way
Greenwich
SE10 0BW
Tel: 0207 9522 410





THE GREENWICH YACHT CLUB



Greenwich Yacht Club

1 Peartree Way, SE10 0BW

0207 9522 410

venuehire@greenwichyachtclub.co.uk