

INDUSTRIA

WILLIAMSBURG

WILLIAMSBURG, BROOKLYN

29-39 South 5th Street

Founded in 1991, Industria revolutionized the photo and event industry as the first multi-studio complex of its kind in the New York City. Today, in addition to the iconic West Village location, Industria boasts a brand new outpost in the burgeoning neighborhood of Williamsburg, Brooklyn.

Offering exceptional and versatile facilities, the studios are designed for a variety of events - including private parties, celebrations, weddings, exhibitions, conferences, product launches, and festivals.

Embedded within an incredibly vibrant area, Industria Williamsburg is nestled under the Williamsburg Bridge, the new waterfront Domino Park and is only a subway stop from Manhattan.

Please visit us!



Transportation: 5 min. drive from Manhattan, subway lines L,J,M,Z, East River Ferry





29-39 SOUTH 5TH ST

Beneath the Williamsburg Bridge, a 10,000 sqft warehouse turned into a stunning event space with exceptionally high ceilings, multiple entrances and mezzanines.

South 5th offers 4 studios, Studio 1 through 4, and a lobby for a total of 10,000 sq ft of space. Clients may rent Studios 1 + 2 , Studios 3 + 4 or the entire building.

SIZE
10,000 sq ft

CEILING HIGHT
25 ft (rigging capability)

POWER
800 amp 3-phase power

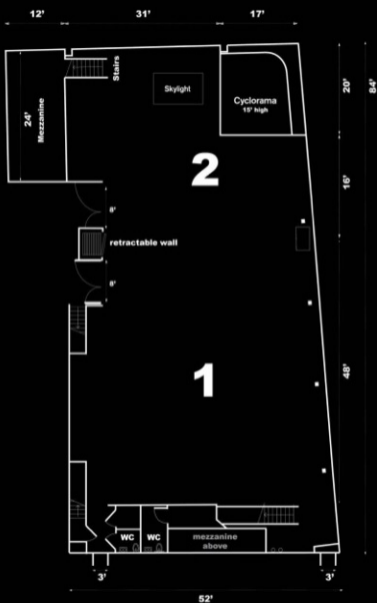
ADDITIONAL NOTES
Ground level with multiple street access points and drive-in capable photo and event space. Private loading dock. Two cycloramas. Retractable walls to partition the space according to client needs. Column-free.



29

39

39



STUDIOS 1 + 2

SIZE

4,500 sq ft open, column-free space

CEILING HEIGHT

25 ft (rigging capability)

POWER

4x 100 amp 3-phase power

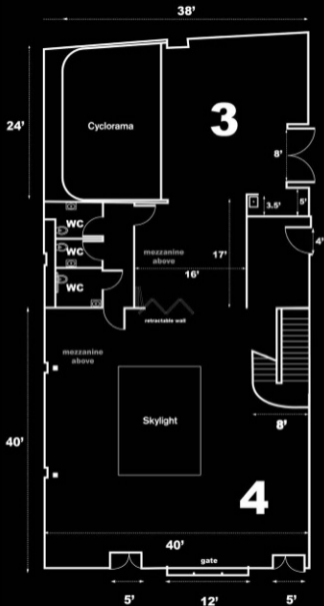
ADDITIONAL NOTES

Ground level with street access. Drive-in capable photo and event space. Private loading dock. Two furnished mezzanines. Access to private bathrooms and shower. Column-free. Conference room available. Retractable wall may be used to partition the space









STUDIOS 3 + 4

SIZE

Studio 3 - 1500 sq ft

Studio 4 - 2000 sq ft + 600 sq ft furnished mezzanine

Combined - 3500 sq ft + mezzanine

CEILING HEIGHT

25 ft (rigging capability)

POWER

4x 100 amp 3-phase power

ADDITIONAL NOTES

Column-less. Huge skylight with black-out capability in Studio 4. Private ground floor building with direct street access and private entrances. Drive-in capable. Retractable wall.









EVENTS GALLERY
29-39 South 5th Street



Google



NYFW THE SHOWS

BOTTEGA VENETA



RALPH LAUREN



GUCCI

SONY



Instagram

ZEGNA



PORSCHE

YouTube



REFINERY29

GLADSTONE

TIFFANY & CO.



Maserati



Mercedes-Benz

Tommy Baham



HBO

Kiehl's
SINCE 1981

Adobe

Microsoft

NYCWFF



lululemon

BOBBI BROWN

FENTY BEAUTY

LOUIS VUITTON

PANTONE



THE NORTH FACE



fitbit

Hennessy
COGNAC

OLD NAVY

Alice
and
Olivia
BY APPOINTMENT

PUMA

SAMSUNG



TARGET

MAC

THE WALL STREET JOURNAL

adidas

UNI QLO

Spotify

ESSENCE OF VEGAN

















Bedford Avenue

ON AIR

1
CONCEPT DEVELOPMENT



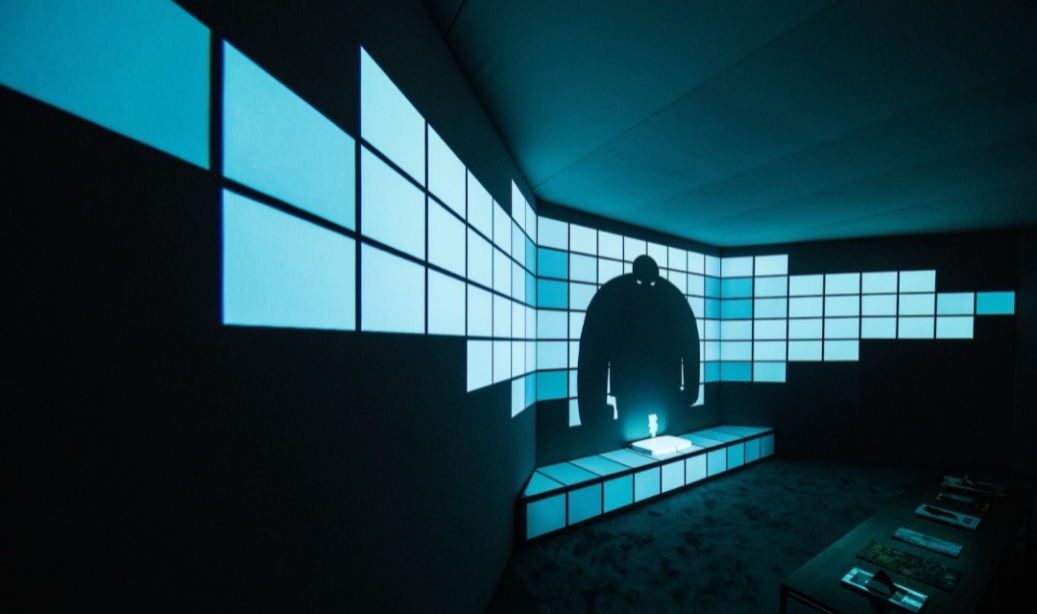


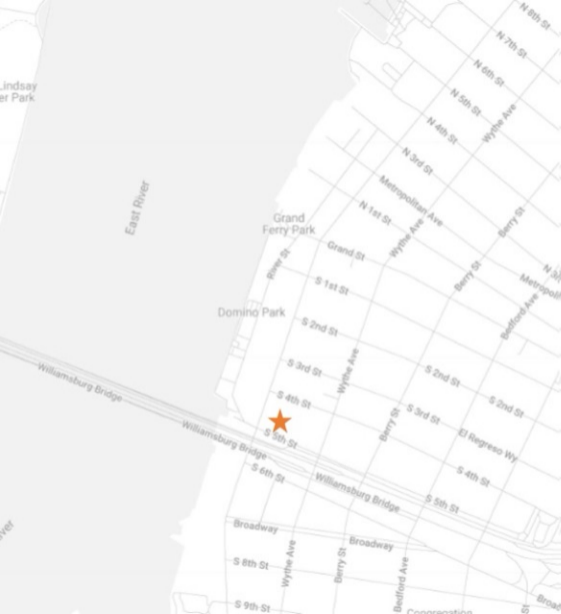
29

39

39







THANK YOU

CONTACT:

212.366.1114

events@industrianyc.com

www.industrianyc.com

Subway: L at Bedford Ave, J M Z at Marcy Ave
East River Ferry, South Williamsburg
5-minute drive from Manhattan