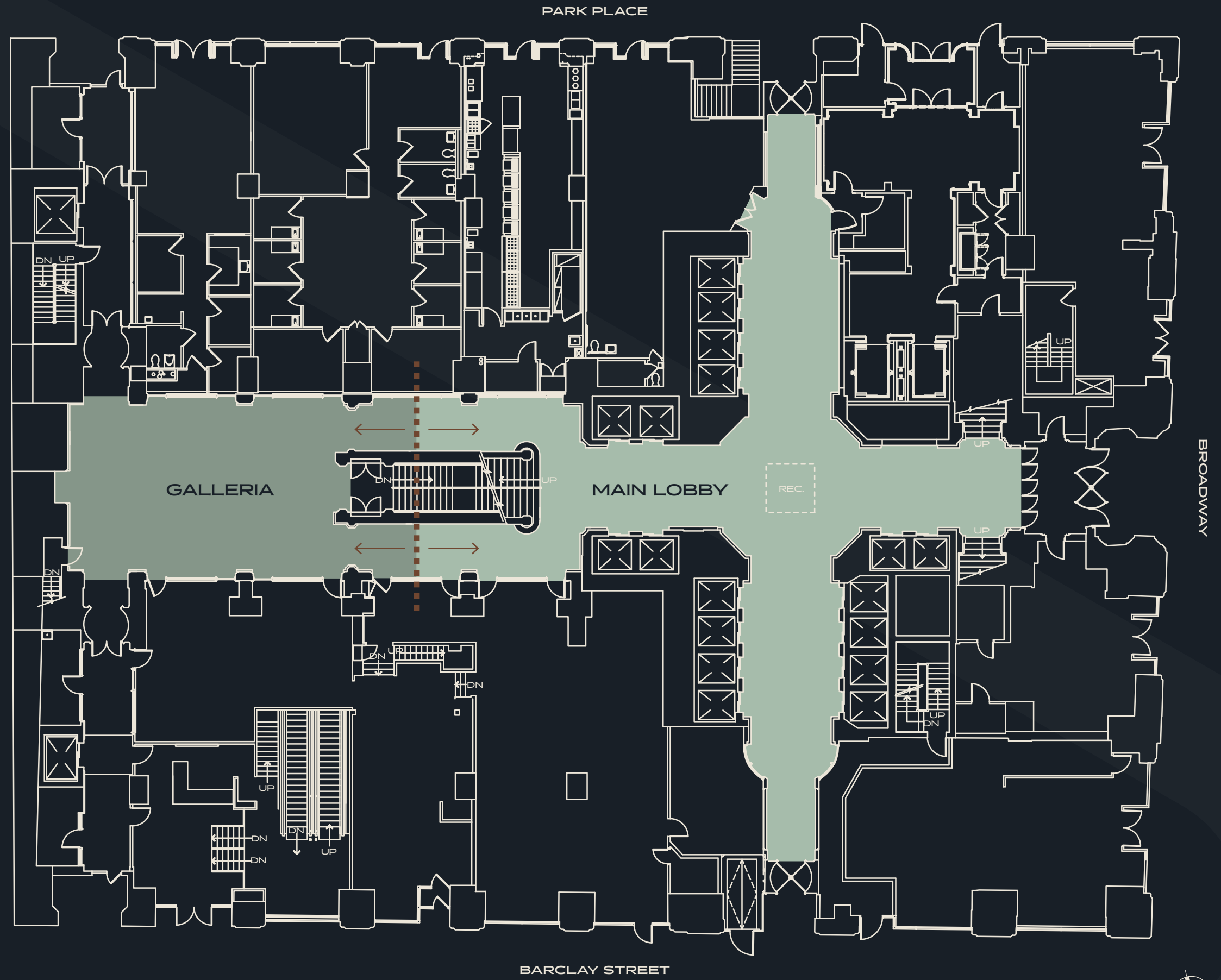


MAIN LOBBY

GROUND LEVEL

Size:	1,936 SF
Capacity:	~150 people
Power:	Electrical panel in stairwell to sub-basement
Connectivity:	Dedicated WiFi
Features:	Marble staircase and vaulted ceilings
Parking:	On-site
Freight:	Loading and elevator access available

[VIRTUAL TOUR HERE](#)



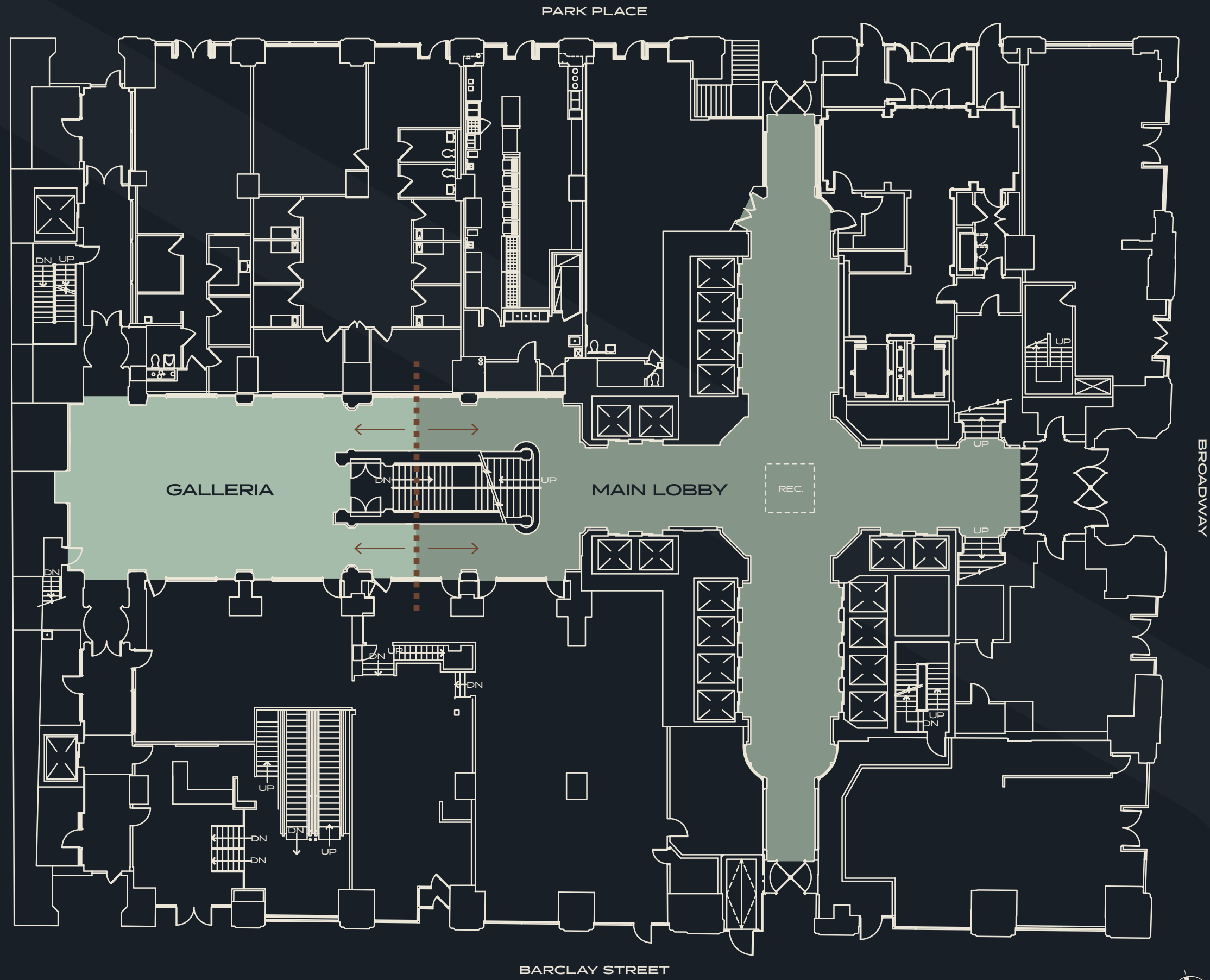
* Please note: activations within the lobby are subject to building approvals regarding event type, timing, and maximum capacities.

GALLERIA

GROUND LEVEL

Size:	1,300 SF
Capacity:	~60 people
Power:	Electrical panel in stairwell to sub-basement
Connectivity:	Dedicated WiFi
Features:	Marble walls and coffered ceilings
Parking:	On-site
Freight:	Loading and elevator access available

[VIRTUAL TOUR HERE](#)

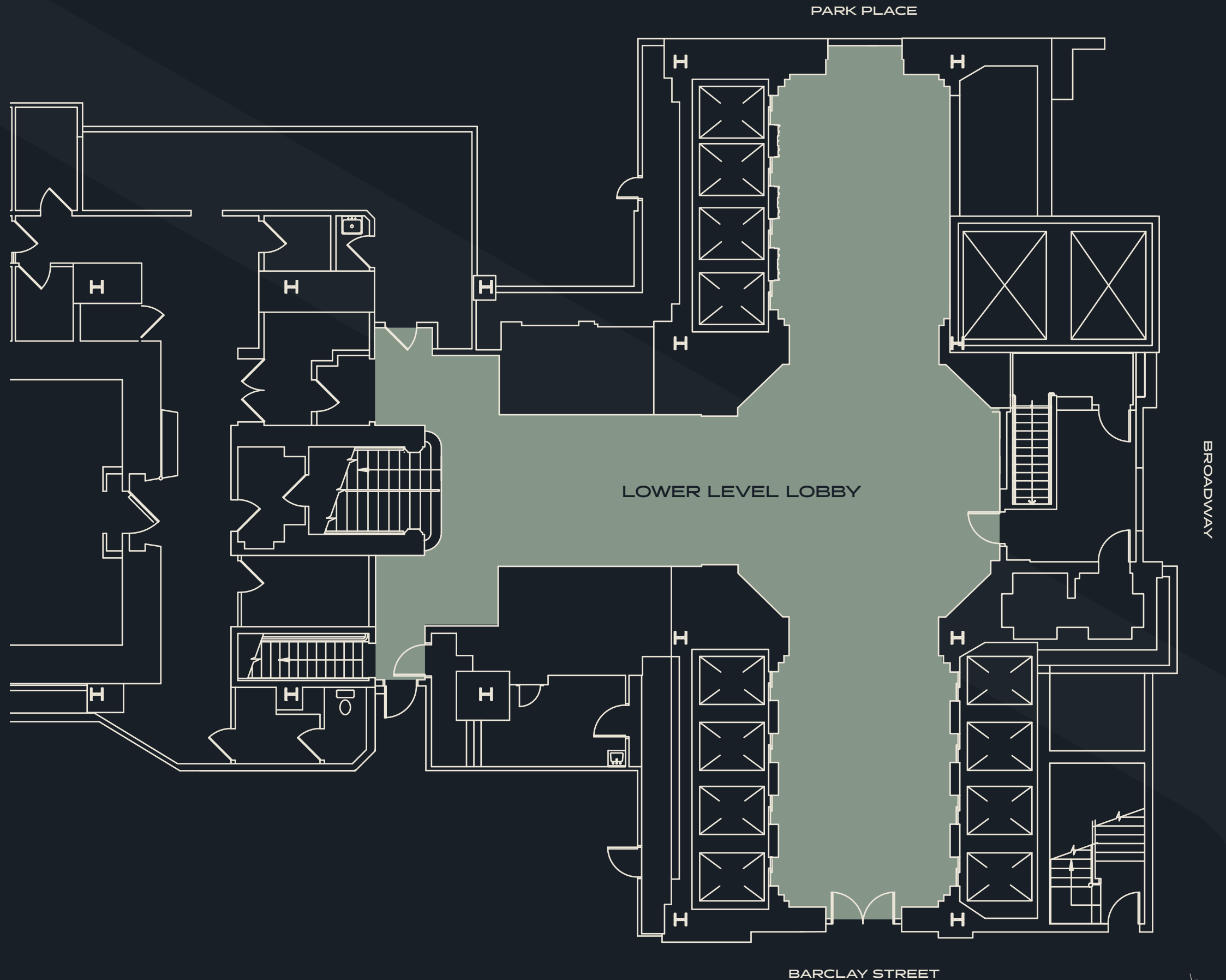


* Please note: activations within the lobby are subject to building approvals regarding event type, timing, and maximum capacities.

LOWER LEVEL LOBBY

LOWER LEVEL

Size:	2,075 SF
Capacity:	~50 people
Power:	Electrical panel in stairwell to sub-basement
Connectivity:	Dedicated WiFi
Accessibility:	Via multiple elevators
Parking:	On-site
Freight:	Loading and elevator access available



* Please note: activations within the lobby are subject to building approvals regarding event type, timing, and maximum capacities.

