

**CAMM & HOOPER**



**2017**

# CONTENTS

Click chapter to view or simply scroll through and use the buttons on the bottom right to navigate the document.

[Our story](#)

[Events](#)

[Our venues](#)

[Food and drink](#)

[Production](#)

[Banking Hall](#)

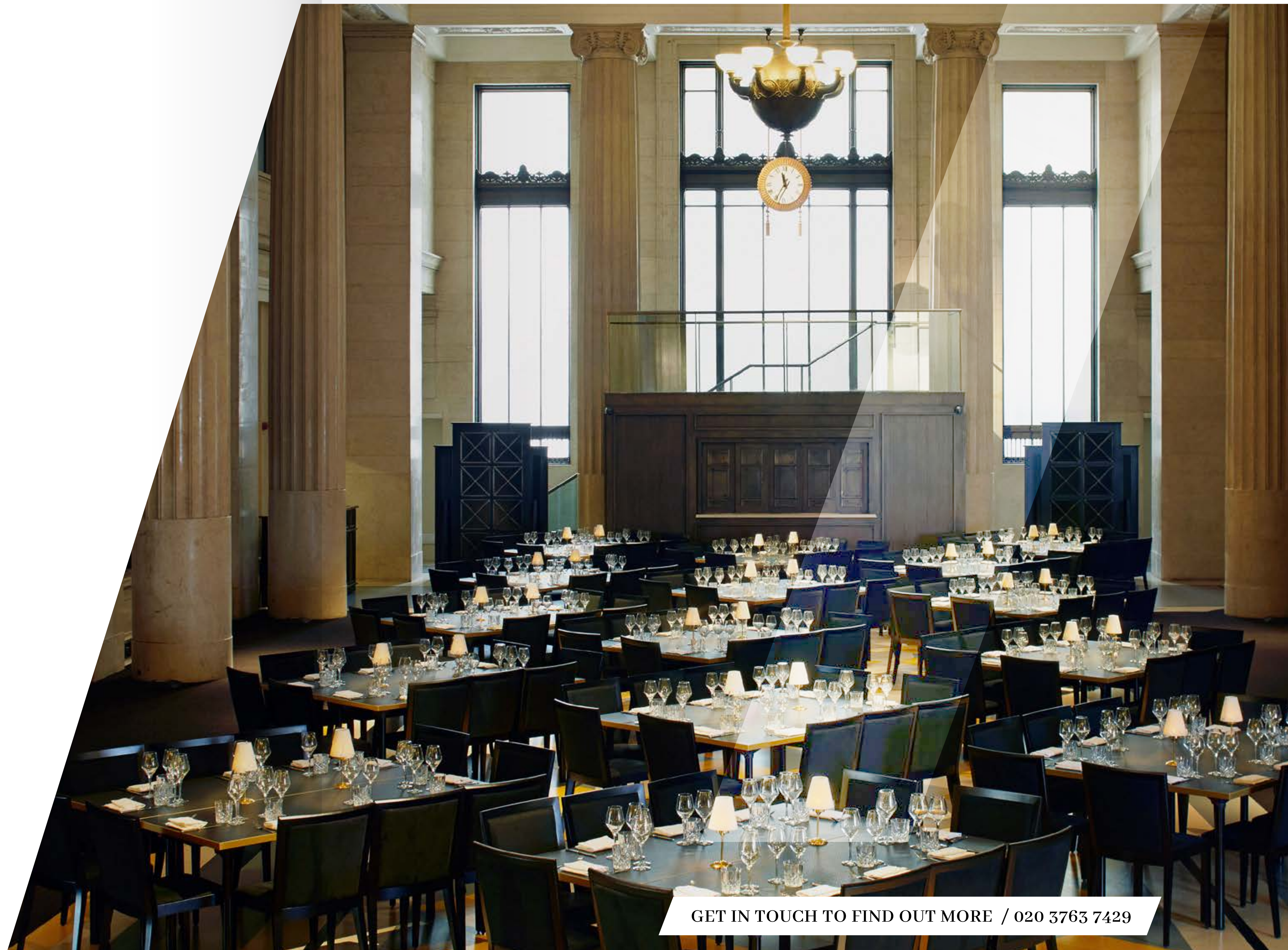
[Tanner Warehouse](#)

[Victorian Bath House](#)

[Six Storeys on Soho](#)

[Grace Hall](#)

GET IN TOUCH TO FIND OUT MORE / 020 3763 7429





**We specialise in delivering exceptional events, anywhere. Banks, warehouses, townhouses, libraries: we reimagine and transform London's most iconic venues.**

## **OUR STORY**

Camm & Hooper have evolved the events industry model to bring you exclusive, unusual and award-winning event spaces across London.

From banks and warehouses to conservatories and libraries, Camm & Hooper is growing across the city.

We offer world-class hosting and event management services, creating unforgettable celebrations for you and your guests. Our food and drink offerings are expertly tailored to suit every event. There's not a detail missed when you host your event with Camm & Hooper.



# EVENTS

Varying in scale and style, each of our event spaces is uniquely striking, and suited to any event. From the intimate to the grand, we deliver and host bespoke events including:

RECEPTIONS

DINNERS

WEDDINGS

MEETINGS

PRODUCT LAUNCHES

FASHION SHOWS



GET IN TOUCH TO FIND OUT MORE / 020 3763 7429

CONTENTS

# OUR VENUES

Click the venue to view in detail



**BANKING HALL**



**SIX STOREYS ON SOHO**



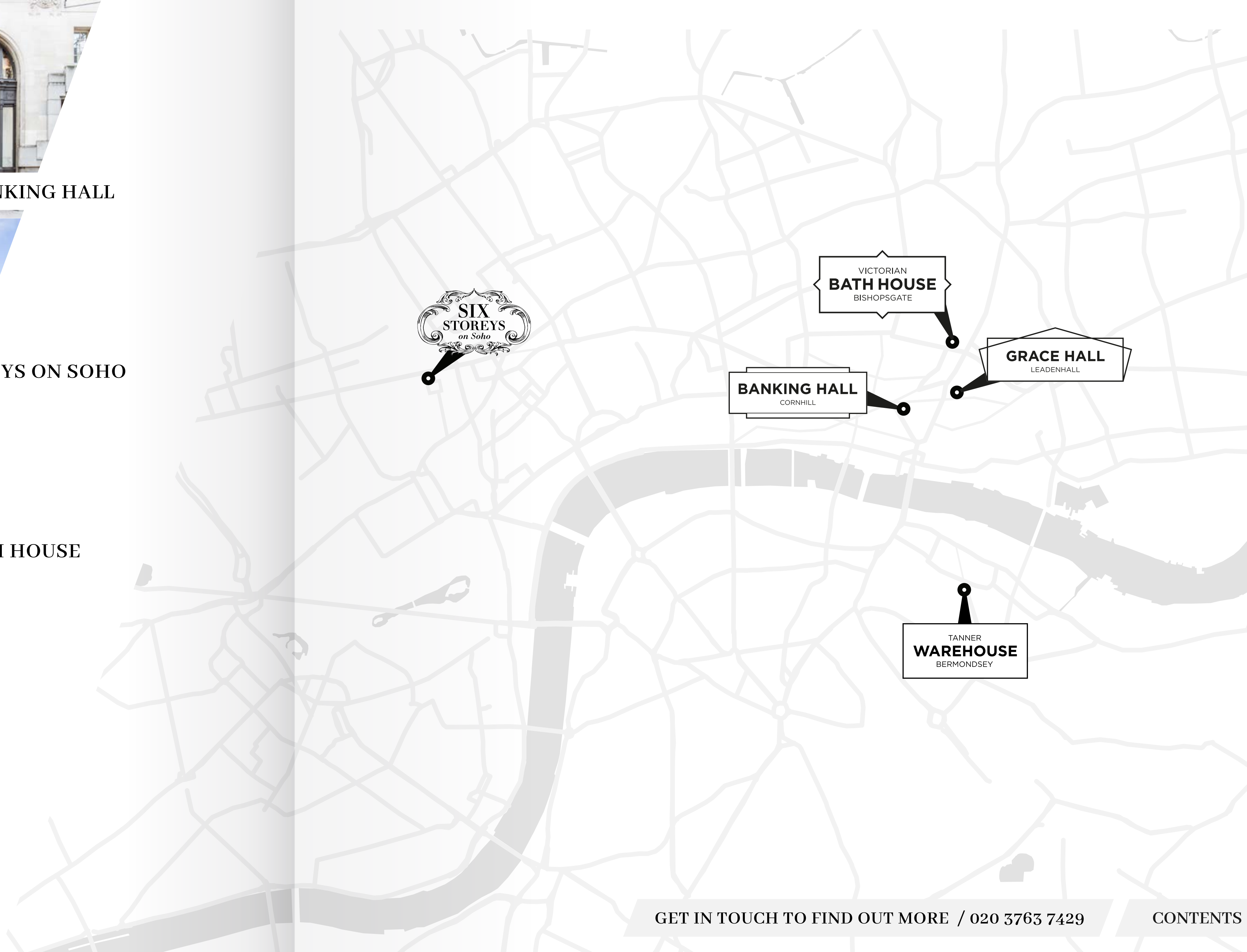
**VICTORIAN BATH HOUSE**



**TANNER WAREHOUSE**



**GRACE HALL**



**SIX STOREYS**  
*on Soho*

VICTORIAN  
**BATH HOUSE**  
BISHOPSGATE

**BANKING HALL**  
CORNHILL

**GRACE HALL**  
LEADENHALL

TANNER  
**WAREHOUSE**  
BERMONDSEY

GET IN TOUCH TO FIND OUT MORE / 020 3763 7429

CONTENTS



“You’ll find yourself scooping up with your fork to make sure nothing has gone to waste”

Harpers Bazaar



## FOOD

The food offering across our venues changes with the seasons, using only the best locally sourced produce. Our menus and serving style can be tailored to suit your event; from sit-down service to reception canapés. Take a look at a sample menu below:

### STARTERS

#### **Duck and orange**

Confit duck, smoked almond mayo, pickled peppercorns, endive, kumquat crisps.

#### **Prawn cocktail**

Poached prawns, little gem, smoked thousand island, pickled avocado, crispy onion rings.

#### **Cheese and pineapple**

Goat’s cheese panna cotta, roasted pineapple, cheddar meringues, burnt thyme oil.

### MAINS

#### **Pig ‘n’ pinot**

Slow braised pork belly, celeriac, cabbage, heritage beets, pinot.

#### **Lamb and redcurrant**

Roasted lamb rump, thyme walnut crumb, confit leg hash, redcurrant glazed heritage carrots, savoy cabbage, redcurrant sauce.

#### **Swiss roll**

Butternut, walnut and goat’s cheese swiss roll, smoked mash, braised red cabbage, herb cream.

### DESSERTS

#### **Floating islands**

Apple and blackberry soup, calvados poached meringues, hazelnut and blackberry sugar.

#### **Hot chocolate and marshmallow**

Hot chocolate pudding, malted milk ice cream, poached winter berries, toasted marshmallow.

#### **Bananas and custard**

Banana bread, banana custard ice cream, pea nut praline, cherry gel.

[VIEW ALL MENUS HERE](#)

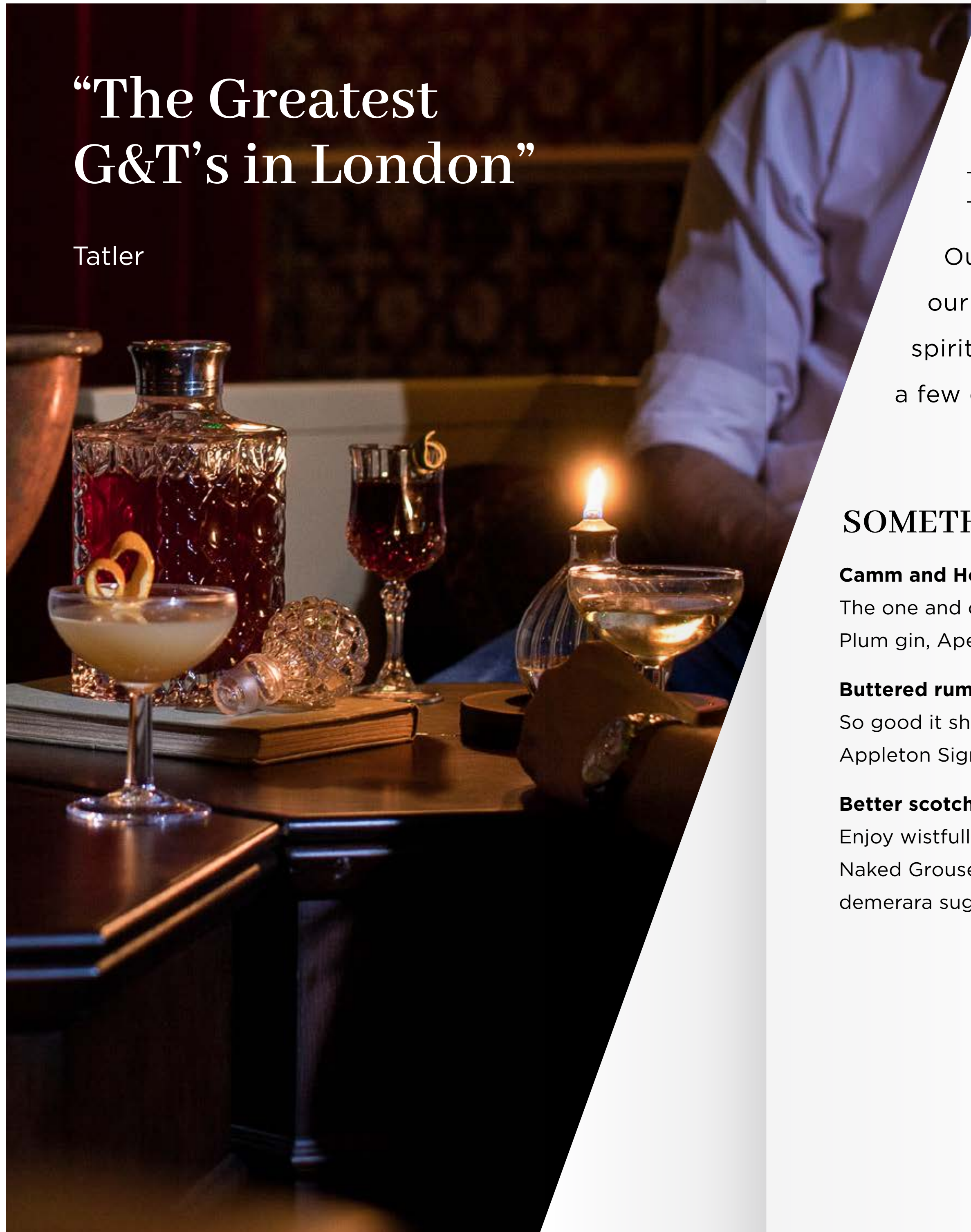
[GET IN TOUCH TO FIND OUT MORE / 020 3763 7429](#)

[CONTENTS](#)



# “The Greatest G&T’s in London”

Tatler



## DRINKS

Our 50-strong cocktail list is a selection of our signature cocktails, curated by our Chief Booze Engineer Mr P. J. Hobbs. His masterful way with flavours, infuses spirits with herbs, spices and fresh fruits to create drinks that guests will love. Here’s a few of our finest tipples:

### SOMETHING STRONG

**Camm and Hooper plum negroni**  
The one and only Plum Negroni.  
Plum gin, Aperol, house vermouth.

**Buttered rum**  
So good it should be illegal!  
Appleton Signature, spices, butter.

**Better scotch**  
Enjoy wistfully.  
Naked Grouse vatted malt,  
demerara sugar, butter.

### SOMETHING LONG

**Plum and apple spritz**  
The original house infused plum gin,  
apple juice, italian bitters, soda.

**Lushington’s gin cup**  
Delicious chamomile gin, sweet  
vermouth, bitter liqueur, cranberry,  
red wine, soda or ginger ale.

**Lushington’s vodka cup**  
Fresh and fruity strawberry and  
basil vodka, Italian bitters, sweet  
vermouth, white wine, soda or  
ginger ale.

### SOMETHING SHORT

**Rhum bumbo**  
Full flavoured orange and spice  
infused house rum, almond liqueur,  
citrus, apple, pineapple, coconut water.

**Albert’s remedy**  
Our famed pear and sage gin, apple,  
bitters, ginger soda.

**Amanda in**  
Choose from our zingy house  
infused citrus vodka or silky cherry  
bourbon blended with mandarin,  
orange, cranberry, agave.

[VIEW ALL MENUS HERE](#)

[GET IN TOUCH TO FIND OUT MORE / 020 3763 7429](#)

[CONTENTS](#)

## PRODUCTION

Our partner Production Plus will help plan your live event, providing a complete service including scenery, staging, rigging, audio, video and lighting, with pre and post-production studios.

With a team of 45 experts, a full range of products onsite and over 30,000 square feet of external warehouse space, Production Plus offers a dynamic, competitive service. Their fleet of 20 vehicles offer peace of mind that their services and staff will always be on time.

We have invested in technology that ensures your event stays connected. Our state of the art Cisco Meraki 802.11ac Wi-Fi and dedicated fibre internet connectivity is monitored in real time, to ensure your guests have the best experience. We can also offer dedicated bandwidth, custom network names and splash pages, user analytics and presence information.



Introducing...

# EVENT ARCHITECTS

## Build the perfect event

For the ultimate bespoke event, we highly recommend commissioning one of our Event Architects. They'll build your dream event from the details up, creating an expertly tailored, fully immersive experience for you and your guests.

Your personal architect will offer expert one-to-one advice, support and complete event management throughout the planning and hosting process. From crafting custom menus and creating unique drinks to first-class production, theming, entertainment design and venue selection, they'll ensure every aspect of your event is perfected.

To discuss our vision for your event, the full Camm & Hooper senior team will host a creative workshop and present an extensive, bespoke proposal.

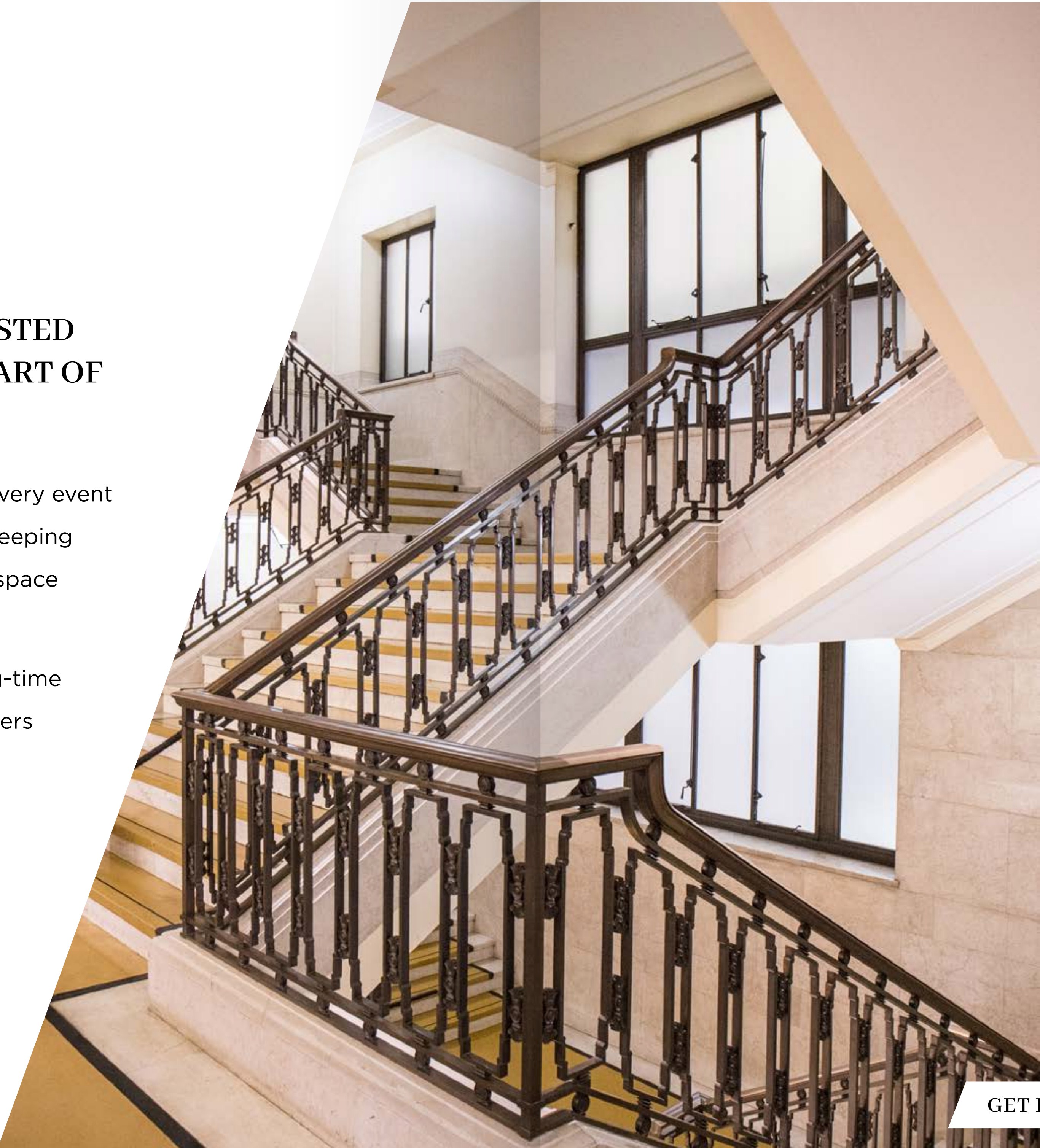
To discuss your event with an event architect, please get in touch:  
**[eventarchitect@camm-hooper.co.uk](mailto:eventarchitect@camm-hooper.co.uk)**

A wide-angle photograph of the Banking Hall interior. The space is grand and classical, featuring tall, fluted columns that support a high ceiling with a decorative, recessed square pattern. A large, ornate chandelier hangs from the center of the ceiling. In the background, a wide staircase with a dark metal railing leads to an upper level. The floor is polished and features a central pattern of yellow and grey diamonds, flanked by dark carpeted areas with yellow and grey stripes. The lighting is warm and even, highlighting the architectural details.

**BANKING HALL**  
CORNHILL

[GET IN TOUCH TO FIND OUT MORE / 020 3763 7429](#)

[CONTENTS](#)



**A STUNNING GRADE II LISTED  
EVENT SPACE IN THE HEART OF  
THE SQUARE MILE.**

Designed in the 1930s, Banking Hall infuses every event with art-deco elegance. Comprised of the sweeping Main Hall and adjoining Counting Room, the space is at once unique and versatile.

This vast Grade II property was once the long-time home of Lloyds, operating as their headquarters from 1930 until 2002. Its grand presence has been a landmark in the banking industry for almost a century.



[GET IN TOUCH TO FIND OUT MORE / 020 3763 7429](#)

[CONTENTS](#)

“For your celebrations here, think Great Gatsby-esque glamour in a location well-versed in excess and designed to impress.”

Luxury London



GET IN TOUCH TO FIND OUT MORE / 020 3763 7429

CONTENTS



“The folks at Camm & Hooper consistently turn out great venues with plenty of event space”

Squaremeal



GET IN TOUCH TO FIND OUT MORE / 020 3763 7429

CONTENTS



## EVENTS AT BANKING HALL

Banking Hall can accommodate up to 800 standing guests and 280 seated.

To enquire about booking your event, party or celebration, email us [here](#), or call **0203 763 7429**

**THE BANKING HALL**  
14 CORNHILL, EC3V 3ND

More info at our website:  
**[cammhooper.com](http://cammhooper.com)**



STYLE	BANKING HALL		COUNTING ROOM	
	Min	Max	Min	Max
Square Dining	120	280	30	150
Round Dining	120	280	30	150
Dinner Dance	120	220	30	80
Dinner with Stage	120	220	30	80
Dinner with Stage and Dancefloor	120	200	30	60
Standing	150	800	100	280
Theatre	120	280	30	150
Cabaret	120	180	30	80
Classroom	120	150	30	80
Boardroom	50	70	30	50
Fashion Show	N/A	250		N/A
Full Site	800			

[DOWNLOAD FLOORPLAN HERE](#)



[GET IN TOUCH TO FIND OUT MORE / 020 3763 7429](#)

[CONTENTS](#)

TANNER  
**WAREHOUSE**  
BERMONDSEY



GET IN TOUCH TO FIND OUT MORE / 020 3763 7429

[CONTENTS](#)



## A UNIQUE CONVERTED WAREHOUSE IN SOUTH EAST LONDON.

For distinctive events with edge, Tanner Warehouse fits the bill. Located in Bermondsey Street SE1, this converted warehouse offers 3,000 square feet of versatile events space. It's perfect for large, laid-back events including product launches, weddings, wrap parties and corporate dinners for up to 300 guests.

Prior to its transformation under Camm & Hooper in 2013, 50 Bermondsey Street housed a tannery for many years. It's also spent time as a chocolate factory and an artists' studio.



GET IN TOUCH TO FIND OUT MORE / 020 3763 7429

CONTENTS





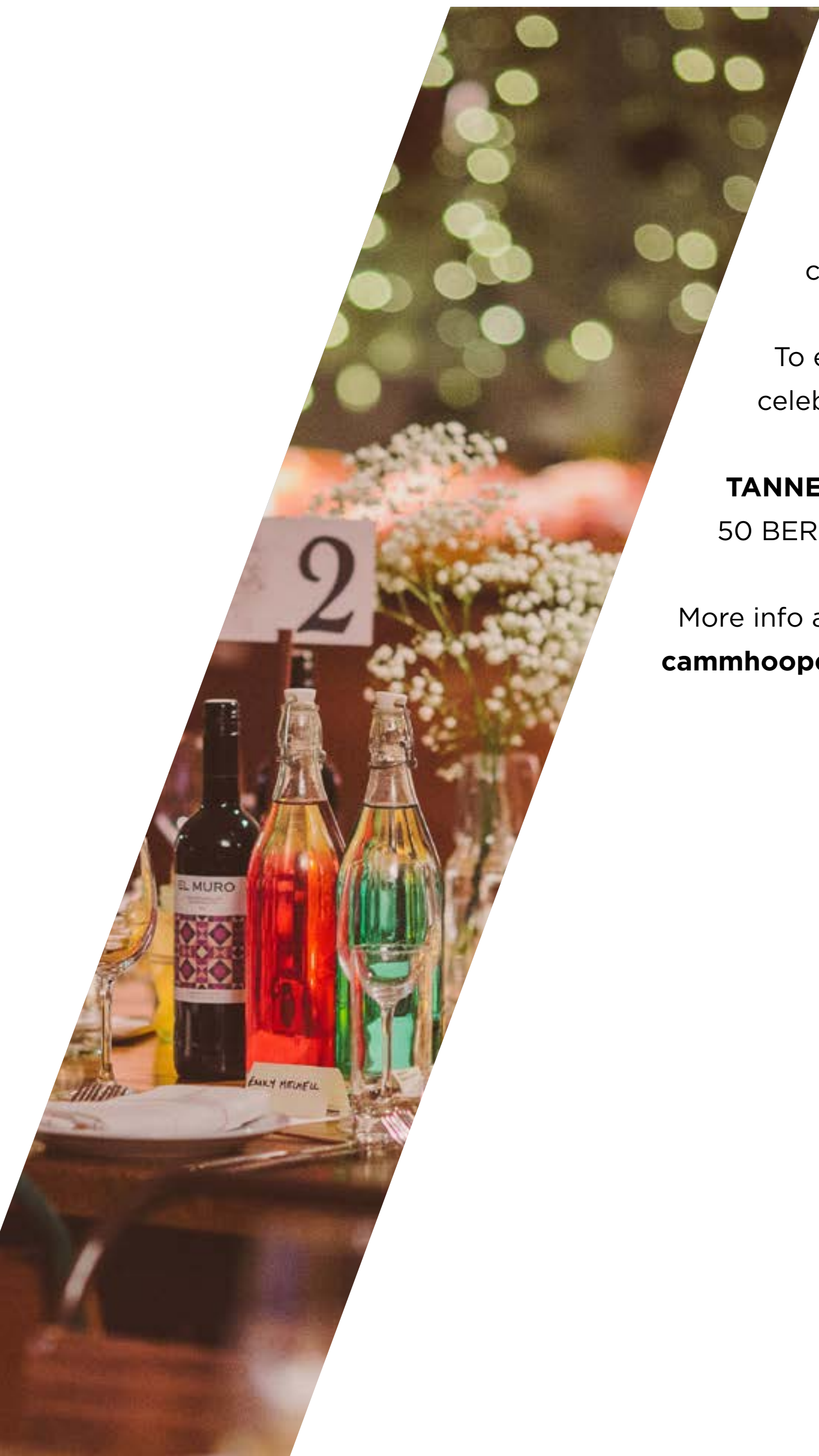
[GET IN TOUCH TO FIND OUT MORE / 020 3763 7429](#)

[CONTENTS](#)



GET IN TOUCH TO FIND OUT MORE / 020 3763 7429

CONTENTS



## EVENTS AT TANNER WAREHOUSE

Tanner Warehouse can accommodate up to 450 standing guests when hired in conjunction with Tanner & Co.

To enquire about booking your event, party or celebration, email us [here](#), or call **020 3763 7429**

### TANNER WAREHOUSE

50 BERMONDSEY ST, LONDON SE1 3UD

More info at our website:  
**[cammhooper.com](http://cammhooper.com)**

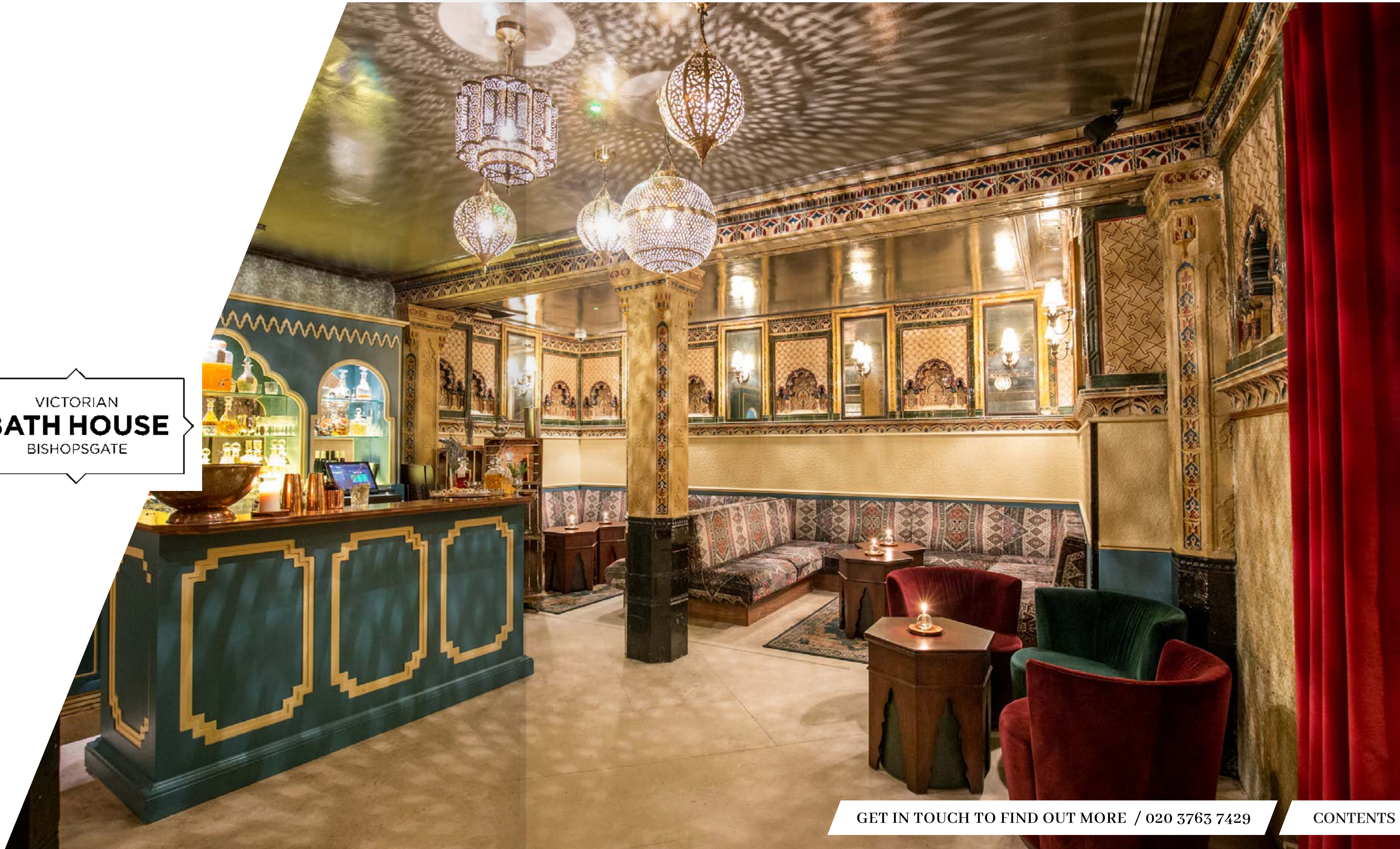


STYLE	TANNER WAREHOUSE	
	Min	Max
Dining	40	150
Dinner Dance	40	120
Dinner with Stage	40	120
Dinner with Stage and Dancefloor	40	120
Standing	70	300
Theatre	40	150
Cabaret	40	100
Classroom	40	50
Boardroom	-	34
Fashion Show	-	150
Full Site (Including Tanner & Co.)		450

DOWNLOAD FLOORPLAN HERE



VICTORIAN  
**BATH HOUSE**  
BISHOPSGATE



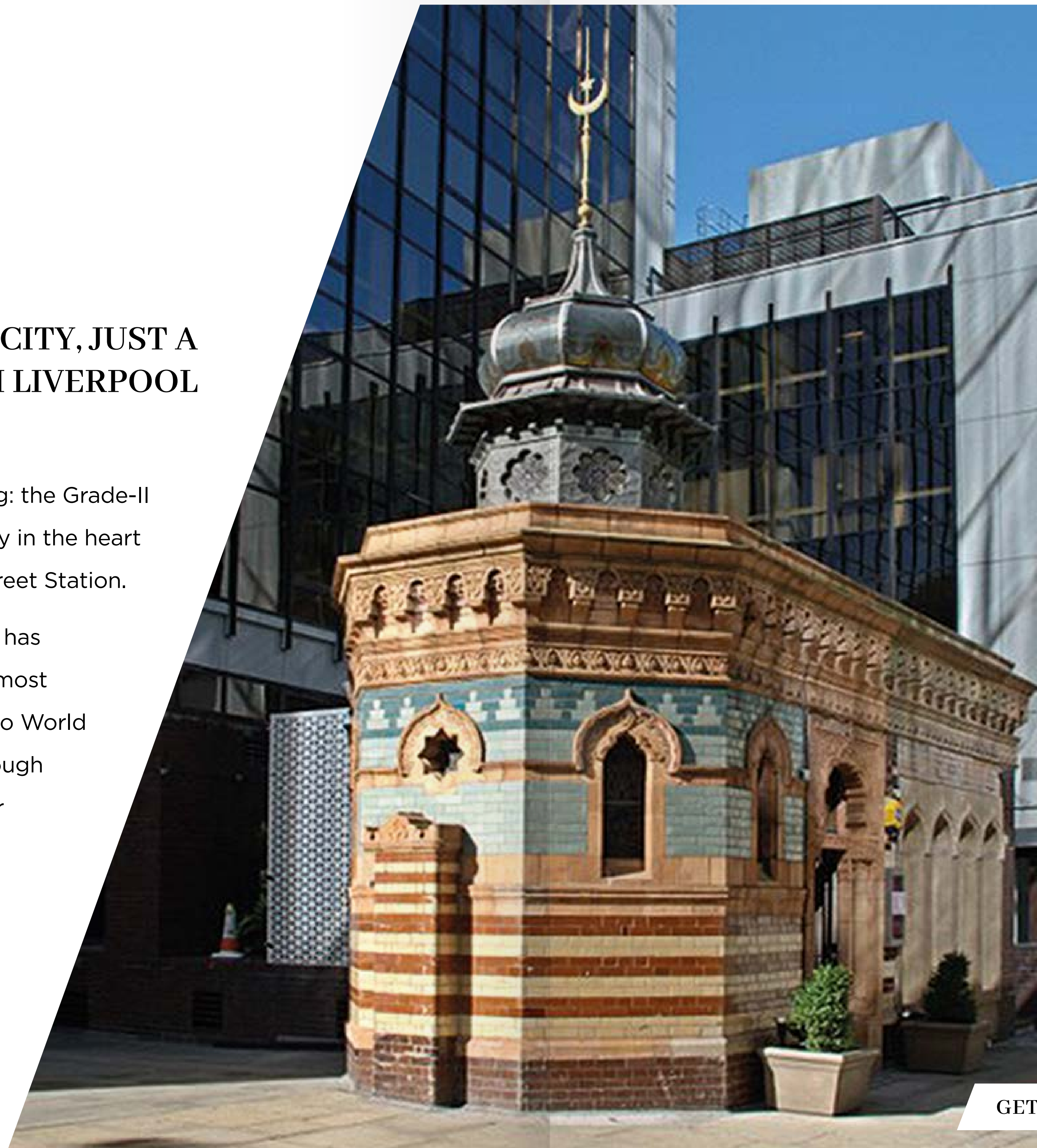
GET IN TOUCH TO FIND OUT MORE / 020 3763 7429

CONTENTS

## A HIDDEN GEM IN THE CITY, JUST A STONE'S THROW FROM LIVERPOOL STREET STATION.

Sumptuous surroundings and period detailing: the Grade-II Victorian Bath House is a hedonistic hideaway in the heart of London, a stone's throw from Liverpool Street Station.

This subterranean space dates from 1817, and has housed baths under varied ownerships for almost a century. Having withstood the bombs of two World Wars, the Victorian Bath House has lived through many incarnations, including a restaurant, bar and nightclub.



GET IN TOUCH TO FIND OUT MORE / 020 3763 7429

CONTENTS



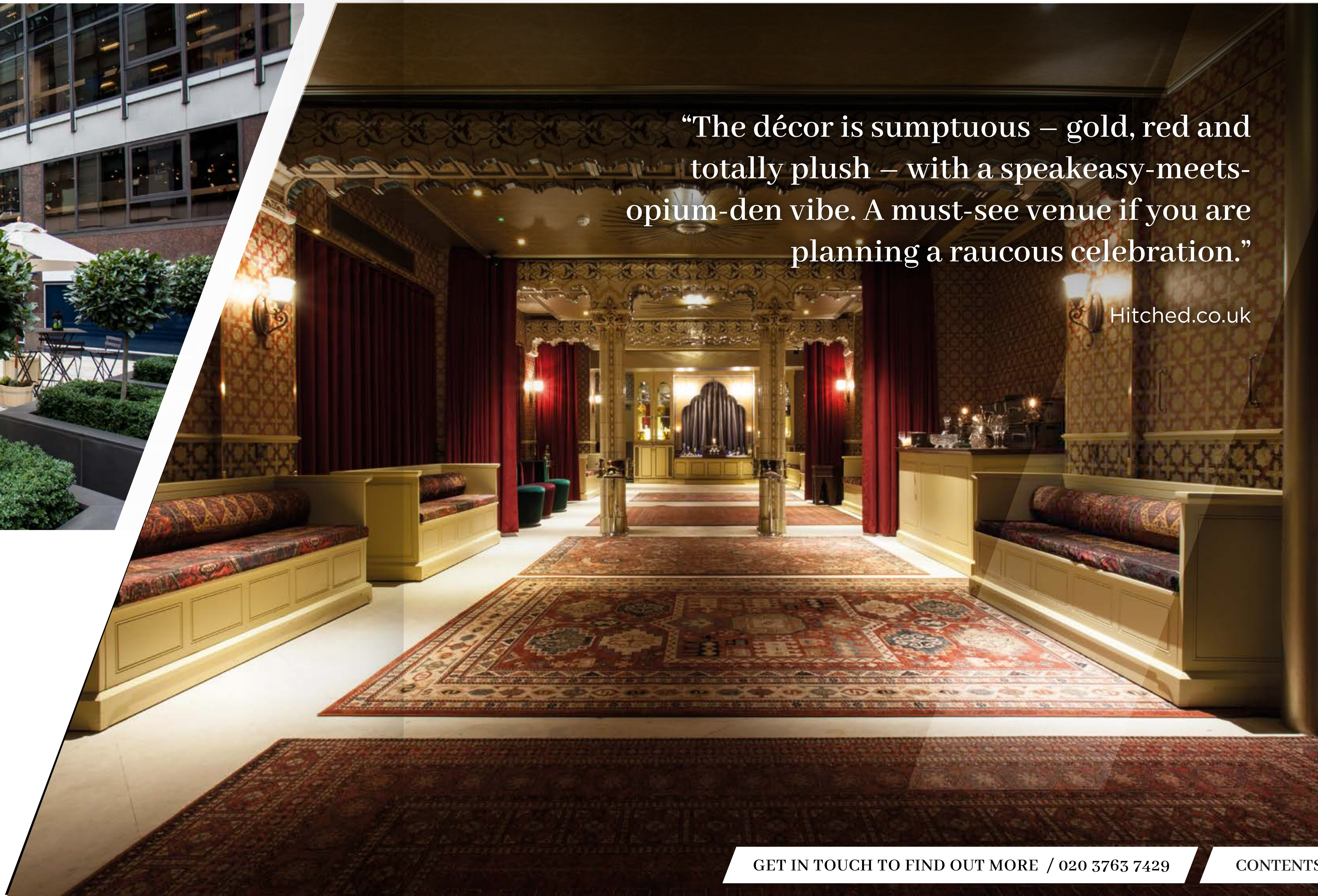
GET IN TOUCH TO FIND OUT MORE / 020 3763 7429

CONTENTS



“The décor is sumptuous – gold, red and totally plush – with a speakeasy-meets-opium-den vibe. A must-see venue if you are planning a raucous celebration.”

Hitched.co.uk



GET IN TOUCH TO FIND OUT MORE / 020 3763 7429

CONTENTS

## EVENTS AT VICTORIAN BATH HOUSE

Victorian Bath House can accommodate up to 150 standing guests and 90 seated.

To enquire about booking your event, party or celebration, email us [here](#), or call **020 37637429**

### VICTORIAN BATH HOUSE

7-8 BISHOPSGATE CHURCHYARD, LONDON EC2M 3TJ

More info at our website:  
**[cammhooper.com](http://cammhooper.com)**



STYLE	VICTORIAN Bath House	
	Min	Max
Dining	20	90
Dinner Dance	20	90
Dinner with Stage	20	80
Dinner with Stage and Dancefloor	20	80
Standing	50	150
Theatre	20	60
Cabaret	20	40
Classroom	20	40
Boardroom	20	20
Fashion Show	-	-
Full Site		150

DOWNLOAD  
FLOORPLAN HERE 



The image shows the interior of a restaurant. In the background, there is a bar with a dark green front and a glass display case containing various bottles and glassware. The walls are made of light-colored wood. To the right, there is a window with patterned curtains and a candelabra with lit candles on the windowsill. In the foreground, there are several tables set with glasses, bottles, and napkins. The chairs are upholstered in bright colors like orange, green, and red. The overall atmosphere is warm and classic.

**SIX  
STOREYS**  
*on Soho*

GET IN TOUCH TO FIND OUT MORE / 020 3763 7429

CONTENTS

## LEAVE YOUR INHIBITIONS AT THE DOOR, THE HEART OF SOHO LIVES ON AT SIX STOREYS ON SOHO.

Sporting sweeping views of Soho Square, each of the six unique floors is packed to the rafters with sumptuous décor and debaucherous Soho spirit.

Soho Square's reputation in bygone eras was one of notorious decadence, and 11 Soho Square seeks to keep this heritage alive. In the past, it has been adapted to become a hotel by noted architect Thomas Hopper, and later became home to iconic gay club The Edge.



GET IN TOUCH TO FIND OUT MORE / 020 3763 7429

CONTENTS



[GET IN TOUCH TO FIND OUT MORE / 020 3763 7429](#)

[CONTENTS](#)



“I strongly recommend  
Six Storeys on Soho to  
anyone looking for a  
unique venue.”

Mont Blanc



[GET IN TOUCH TO FIND OUT MORE / 020 3763 7429](#)

[CONTENTS](#)

## EVENTS AT SIX STOREYS ON SOHO

Six Storeys on Soho can accommodate up to 300 standing guests and 120 seated.

To enquire about booking your event, party or celebration, email us [here](#), or call **0203 763 7429**

**SIX STOREYS ON SOHO**  
11 SOHO SQUARE, SOHO, LONDON W1D 3QE

More info at our website:  
**[cammhooper.com](http://cammhooper.com)**



STYLE	THE PARLOUR	THE LOUNGE	THE DECANTERY	THE STUDY	THE LOFT
	Min - Max	Min - Max	Min - Max	Min - Max	Min - Max
Square Dining	2 - 20	2 - 20	2 - 24	2 - 24	20 - 50
Round Dining	2 - 20	2 - 20	2 - 24	2 - 24	20 - 50
Standing	15 - 50	20 - 50	20 - 50	20 - 50	40 - 80
Theatre	-	20 - 30	20 - 30	20 - 30	20 - 50
Boardroom	-	10 - 20	10 - 20	10 - 20	10 - 24
Full Site	300				

[DOWNLOAD FLOORPLAN HERE](#)



[GET IN TOUCH TO FIND OUT MORE / 020 3763 7429](#)

[CONTENTS](#)



# COMING SOON

Period details dovetail with modern styling at this enchanting Leadenhall venue. Grace Hall accommodates 30 to 600 guests thanks to the variety of spaces, offering you complete flexibility.

To enquire about booking your event, party or celebration, email us [here](#), or call **0203 763 7429**

**GRACE HALL**  
147 LEADENHALL ST LONDON EC3V 4QT

More info at our website:  
**[cammhooper.com](http://cammhooper.com)**

STYLE	GRACE HALL	DIRECTOR'S OBSERVATORY	THE ARCHIVES	GRACE BELOW
	Min - Max	Min - Max	Min - Max	Min - Max
Seated	- 170	- 40	- 30	- 60
Standing	- 350	- 80	- 60	- 120
Theatre	- 200	- 50	- 30	- 20
Full Site	600			

[DOWNLOAD FLOORPLAN HERE](#) 