

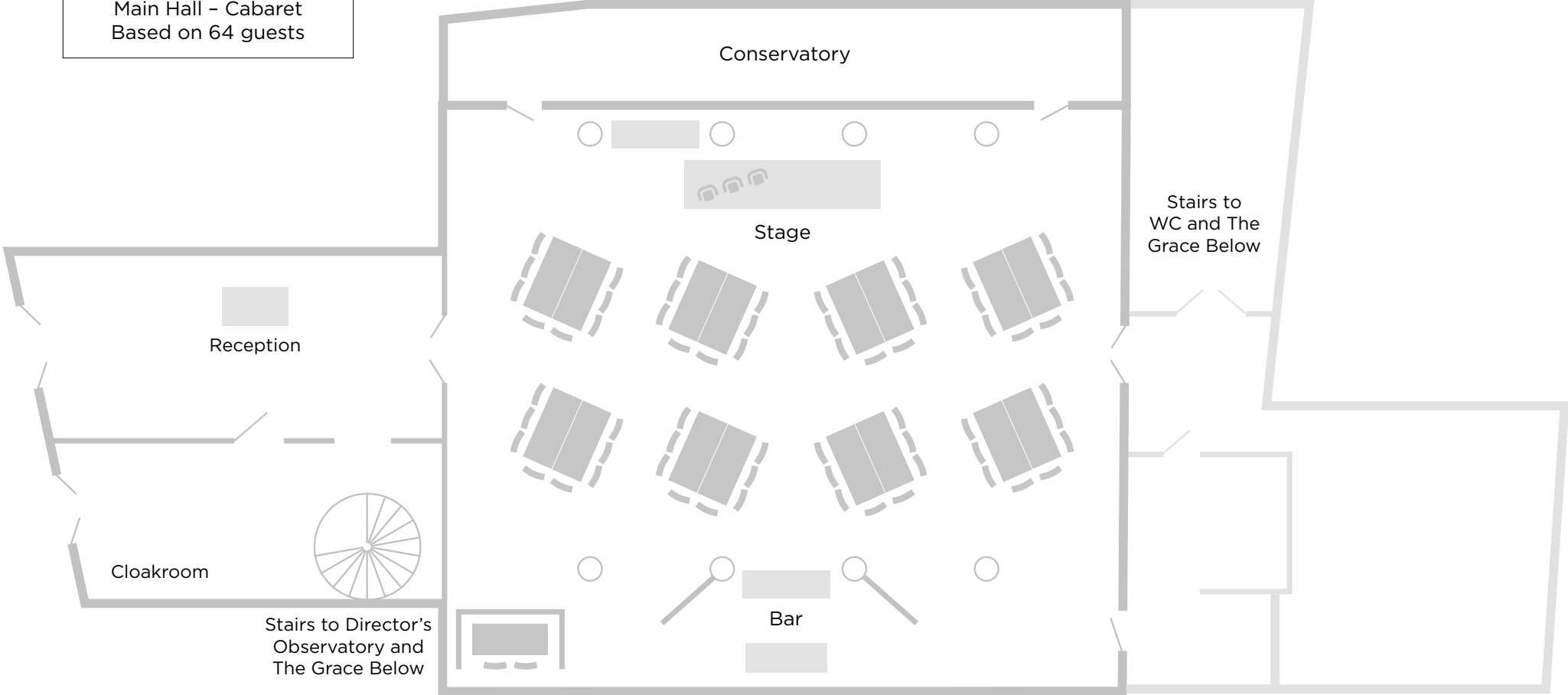


17595 floor plans GH V3



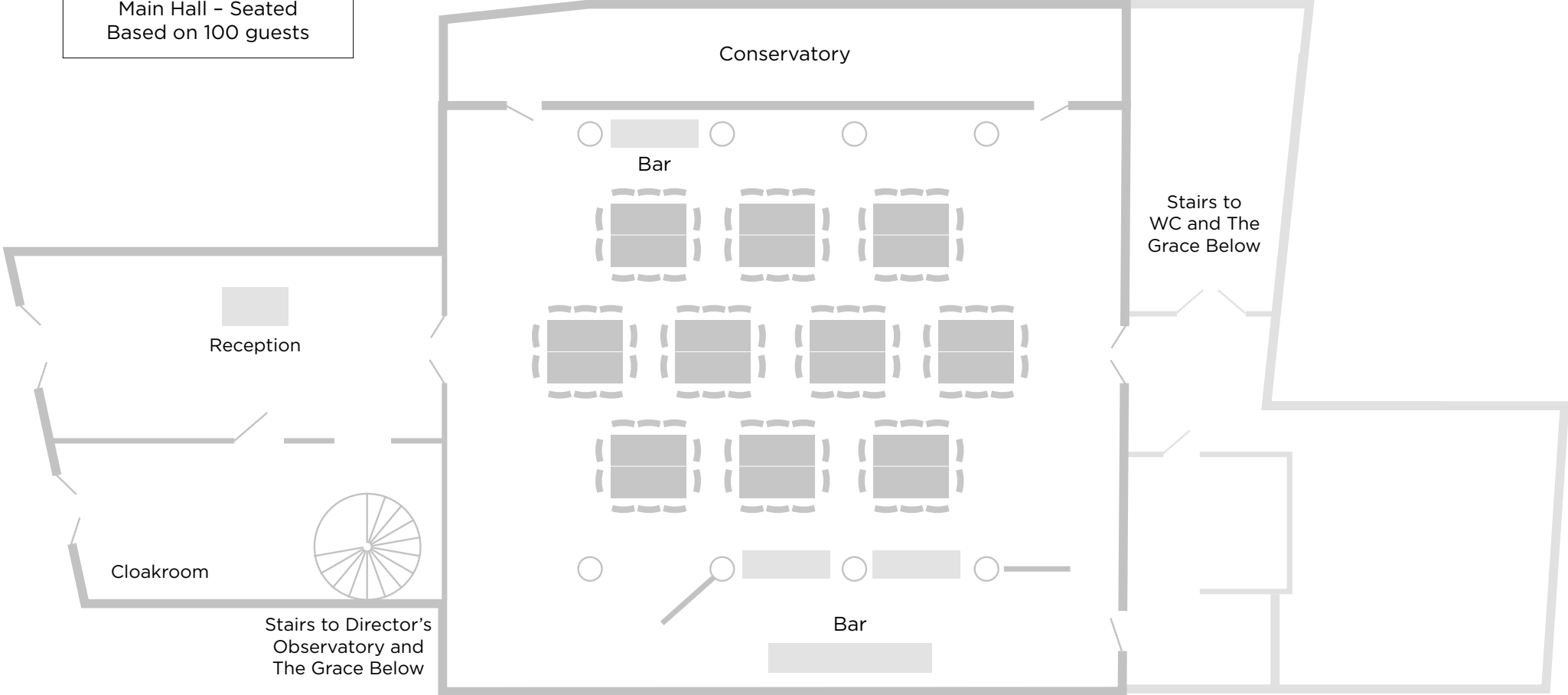
GRACE HALL
LEADENHALL

Main Hall - Cabaret
Based on 64 guests



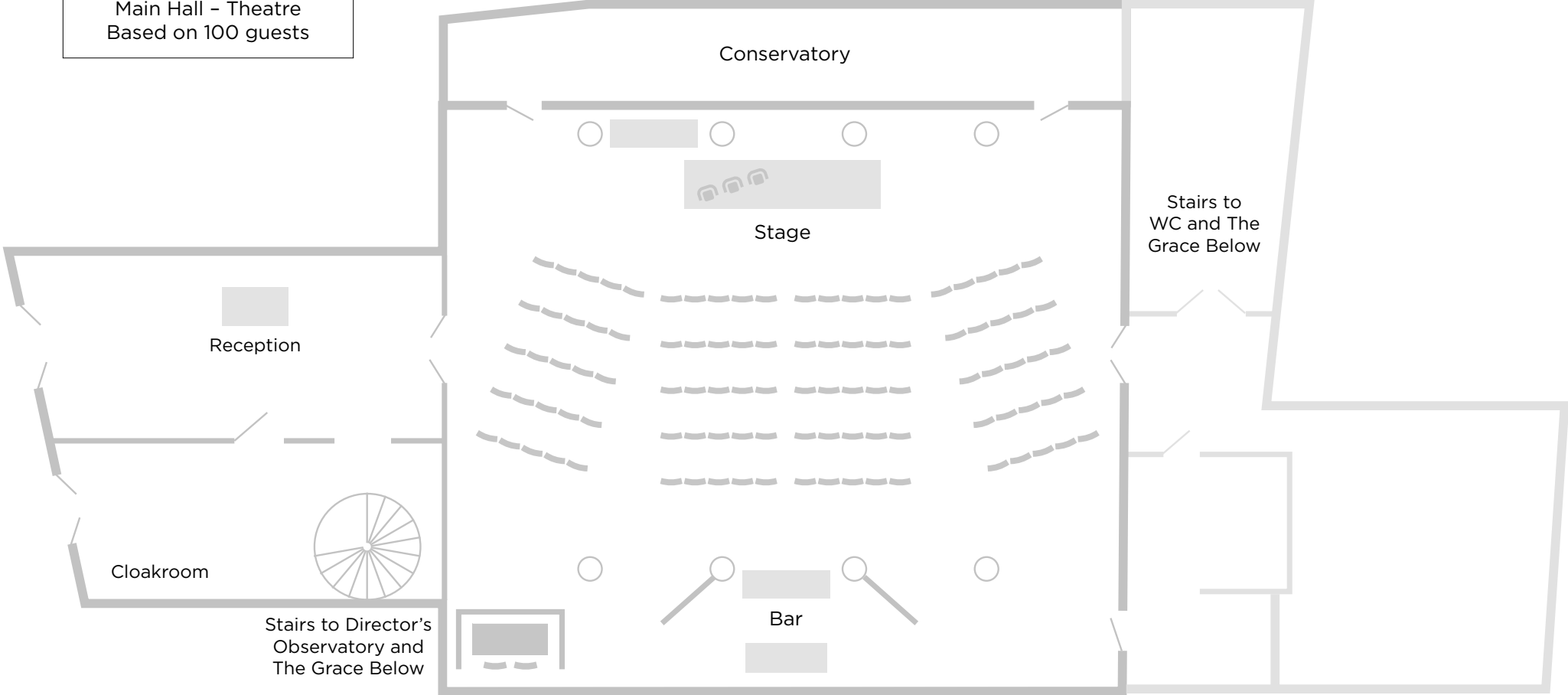
GRACE HALL
LEADENHALL

Main Hall - Seated
Based on 100 guests



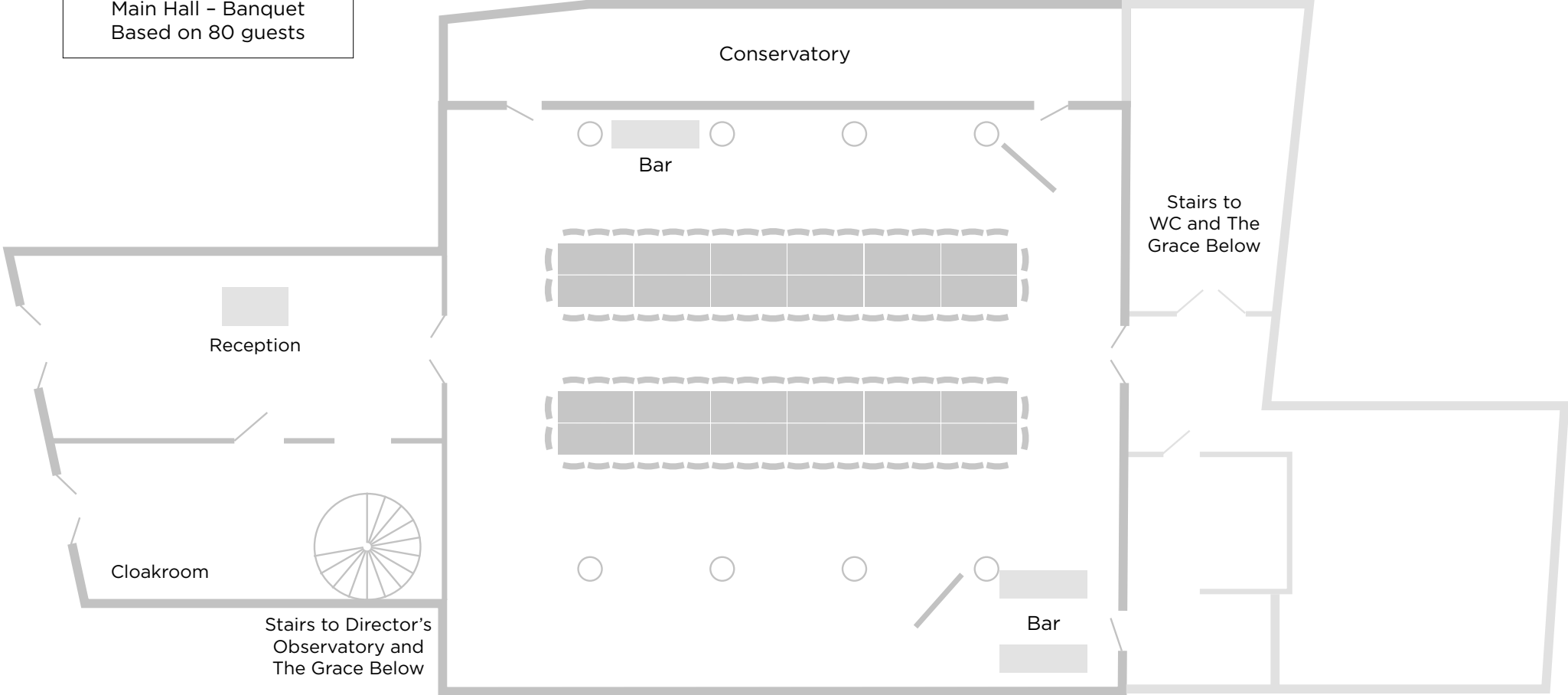
GRACE HALL
LEADENHALL

Main Hall - Theatre
Based on 100 guests



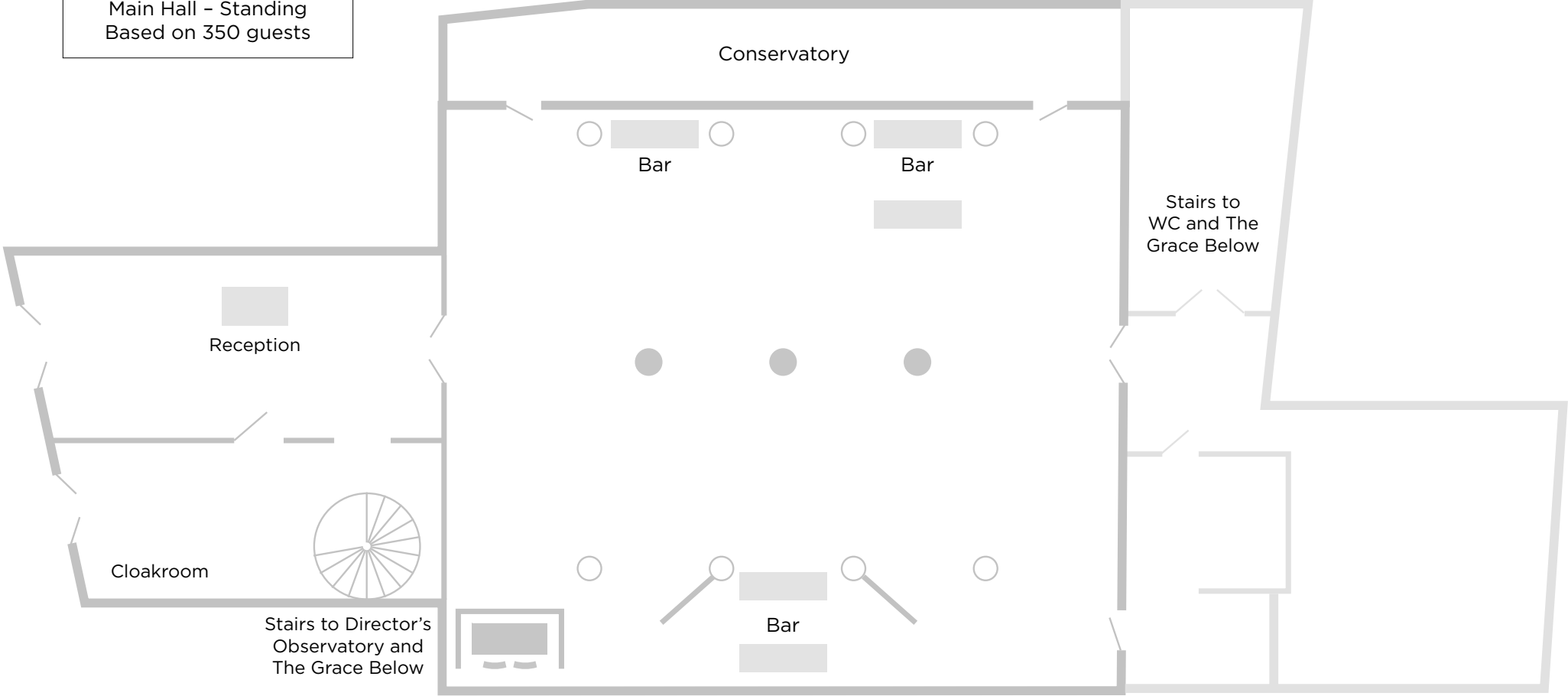
GRACE HALL
LEADENHALL

Main Hall - Banquet
Based on 80 guests



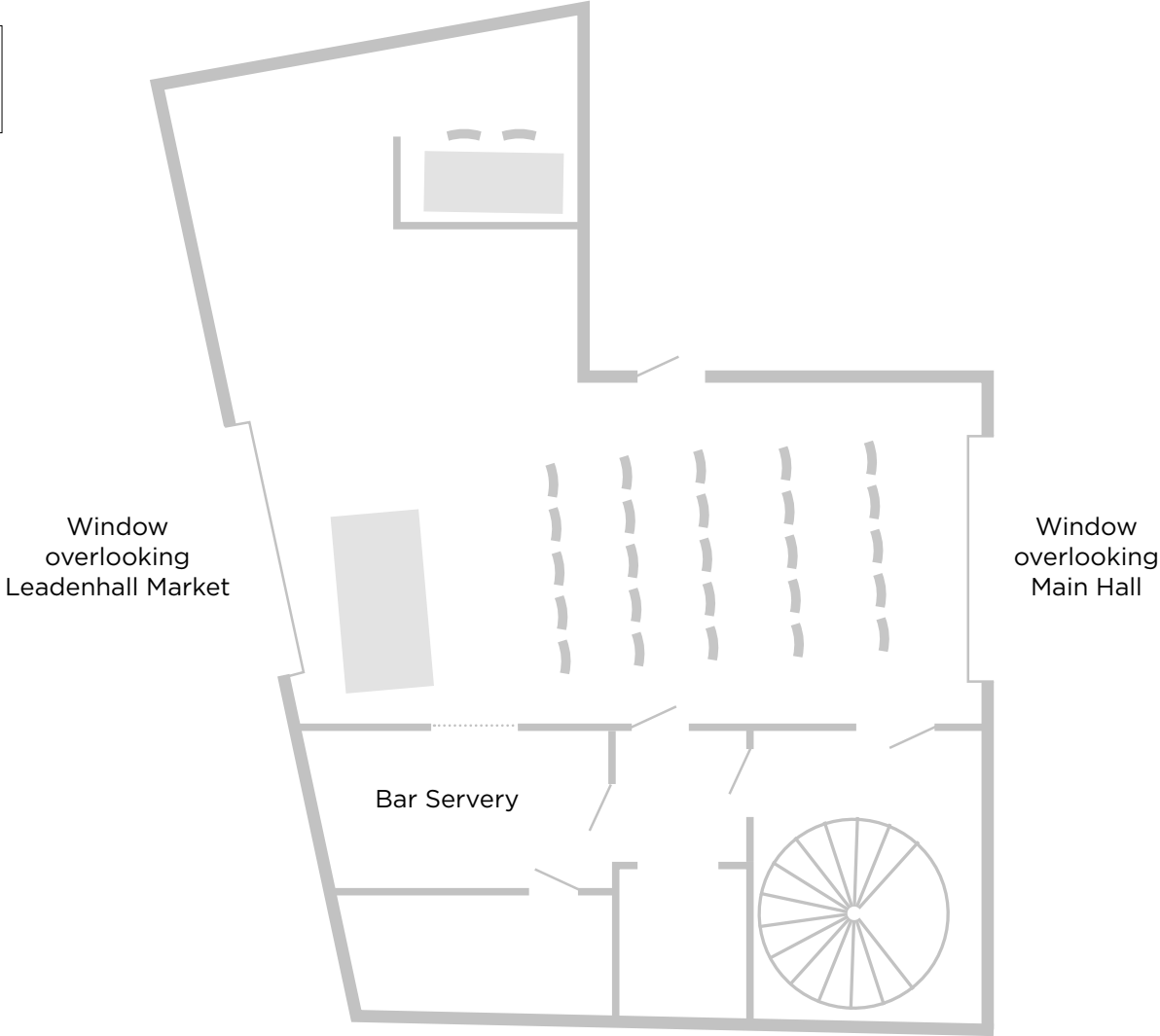
GRACE HALL
LEADENHALL

Main Hall - Standing
Based on 350 guests



GRACE HALL
LEADENHALL

Director's Observatory - Theatre
Based on 25 guests



Window overlooking
Leadenhall Market

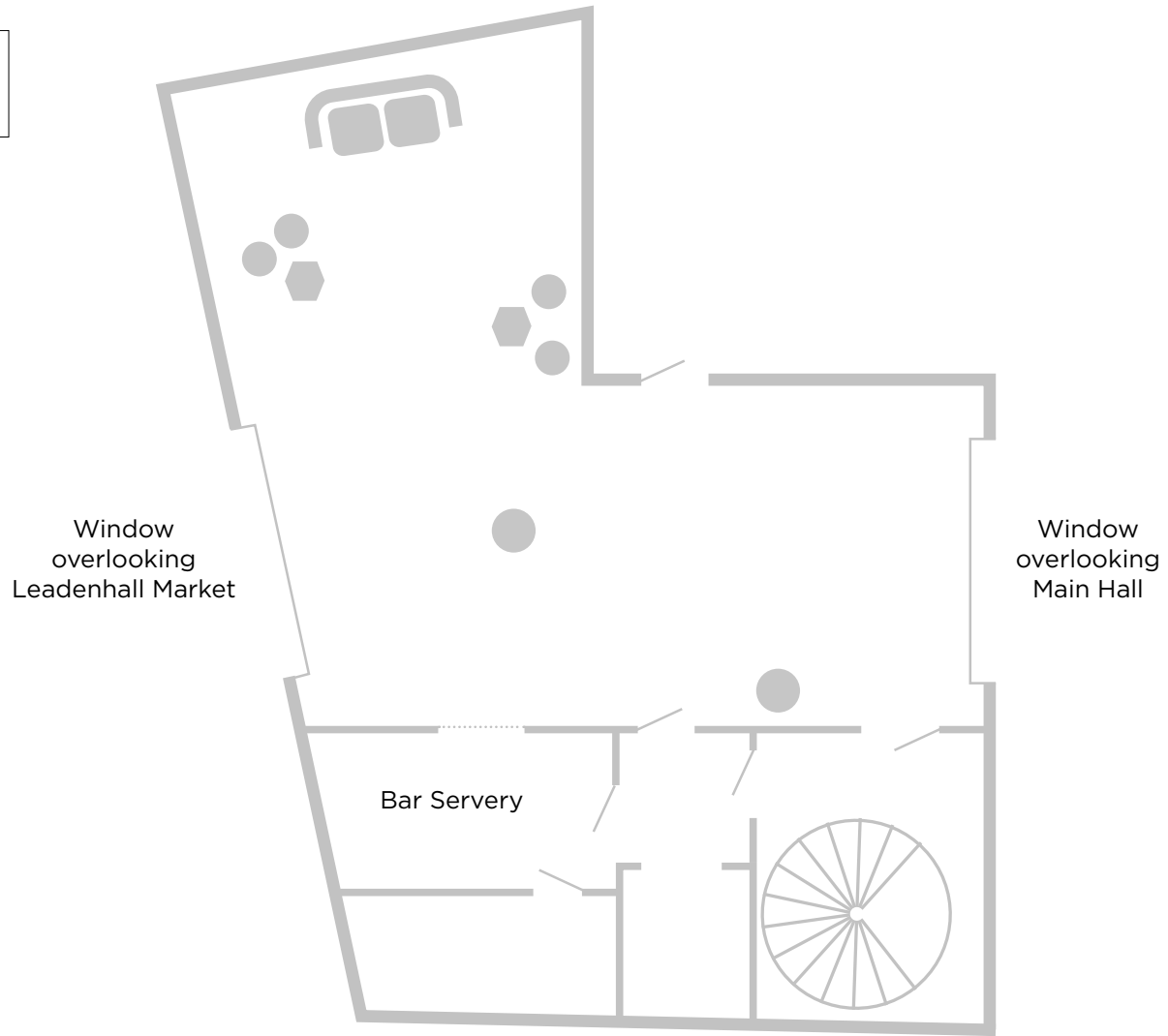
Window overlooking
Main Hall

Bar Servery

Stairs to Main Hall and
The Grace Below

GRACE HALL
LEADENHALL

Director's Observatory - Standing
Based on 80 guests



Window overlooking
Leadenhall Market

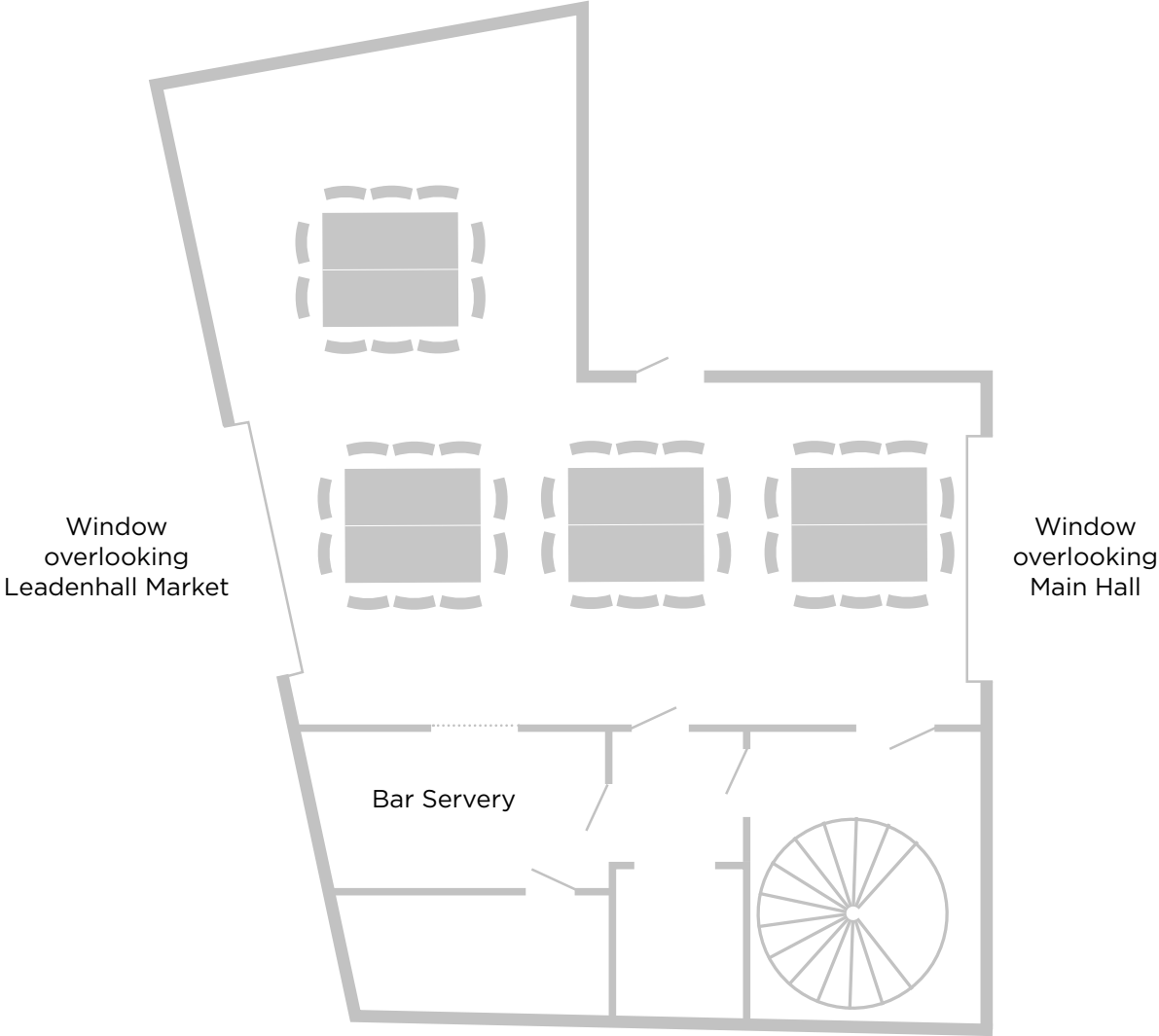
Window overlooking
Main Hall

Bar Servery

Stairs to Main Hall and
The Grace Below

GRACE HALL
LEADENHALL

Director's Observatory - Seated Dinner
Based on 40 guests



Window overlooking Leadenhall Market

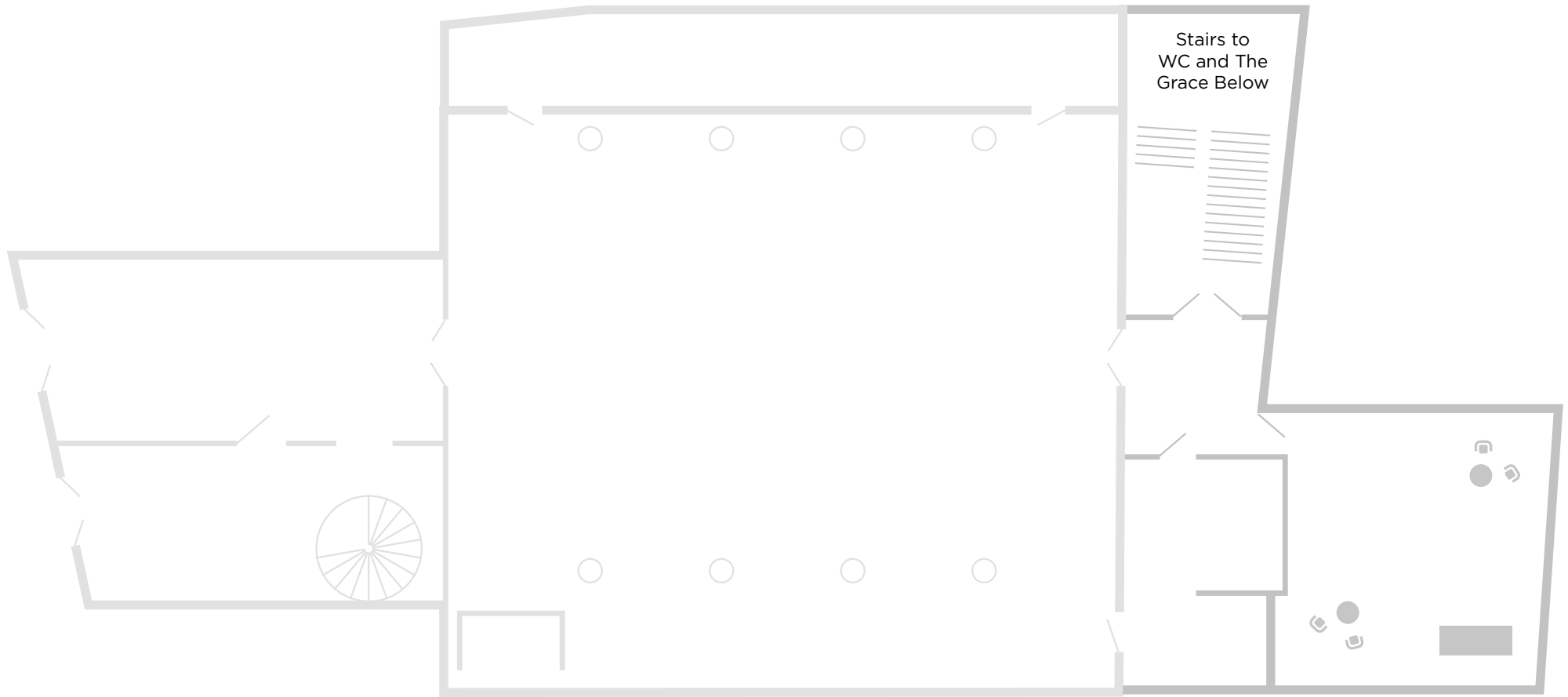
Window overlooking Main Hall

Bar Servery

Stairs to Main Hall and The Grace Below

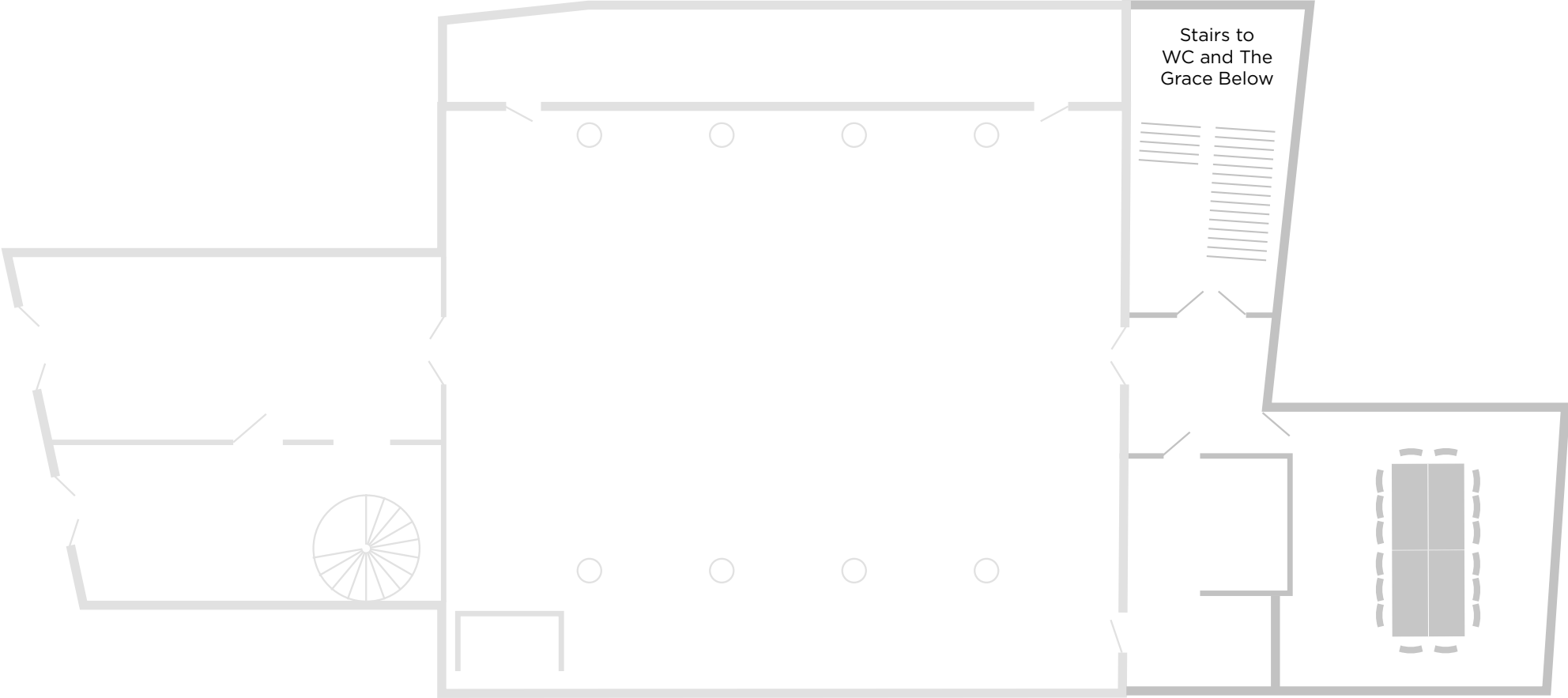
GRACE HALL
LEADENHALL

The Archives - Standing
Based on 60 guests



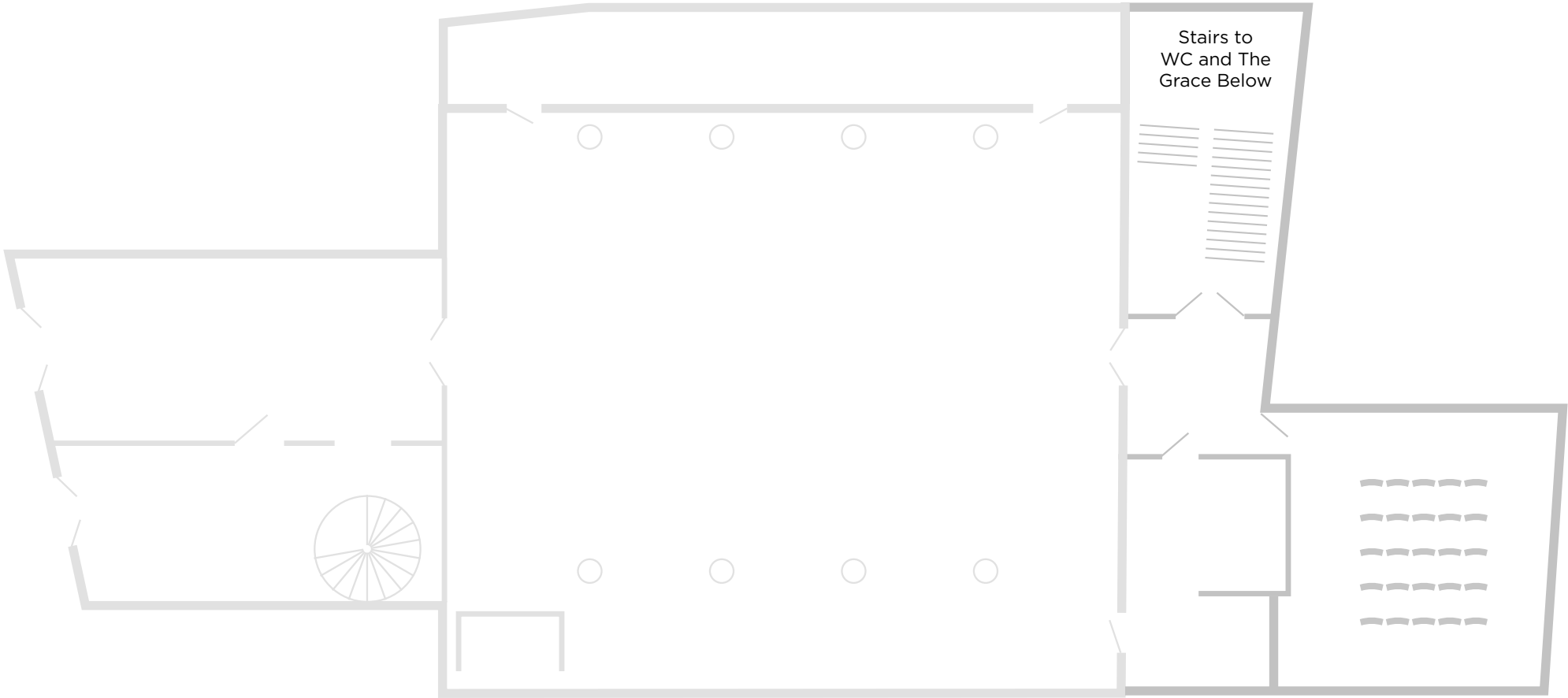
GRACE HALL
LEADENHALL

The Archives - Banquet/Boardroom
Based on 16 guests



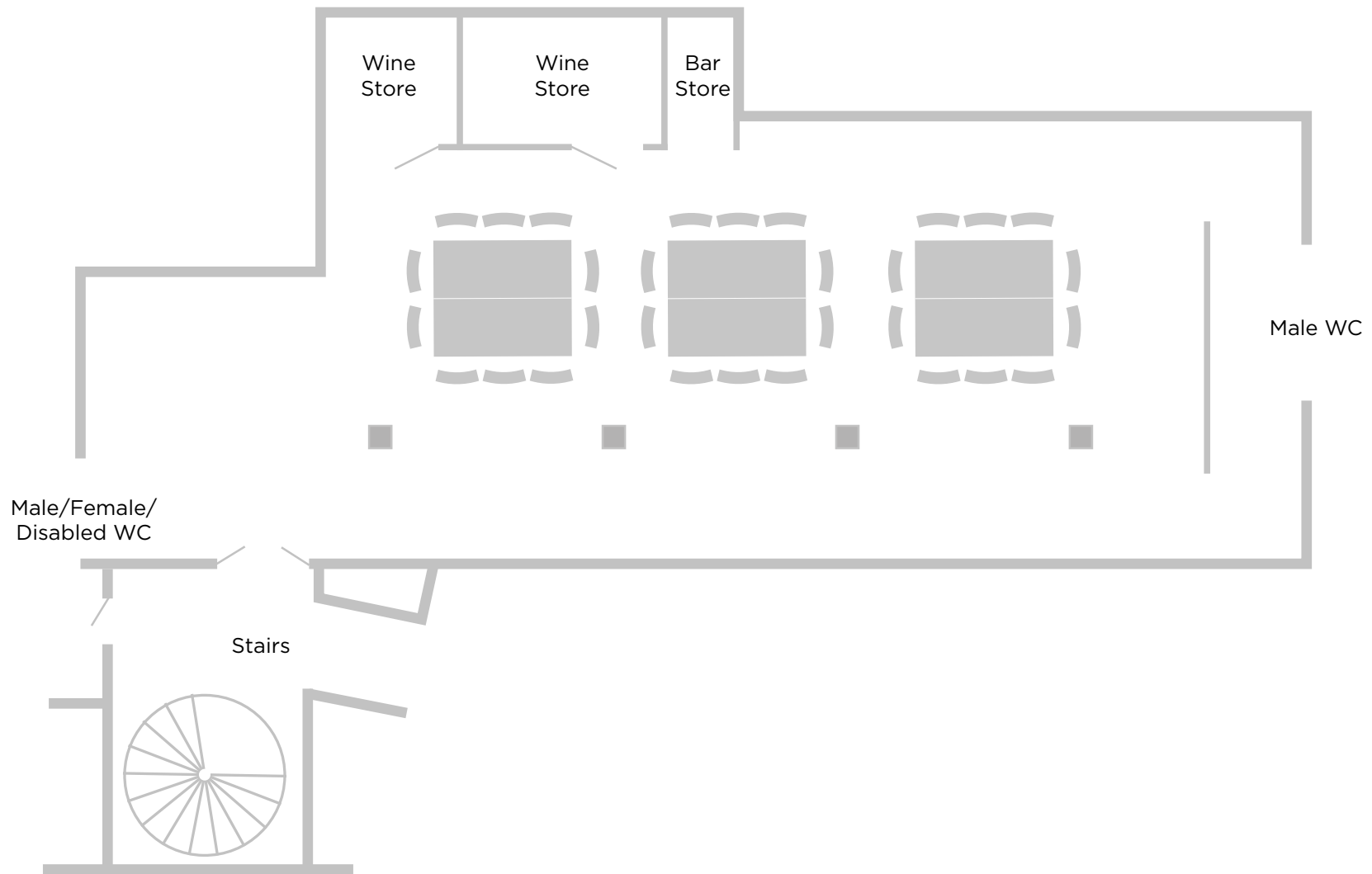
GRACE HALL
LEADENHALL

The Archives - Theatre
Based on 25 guests



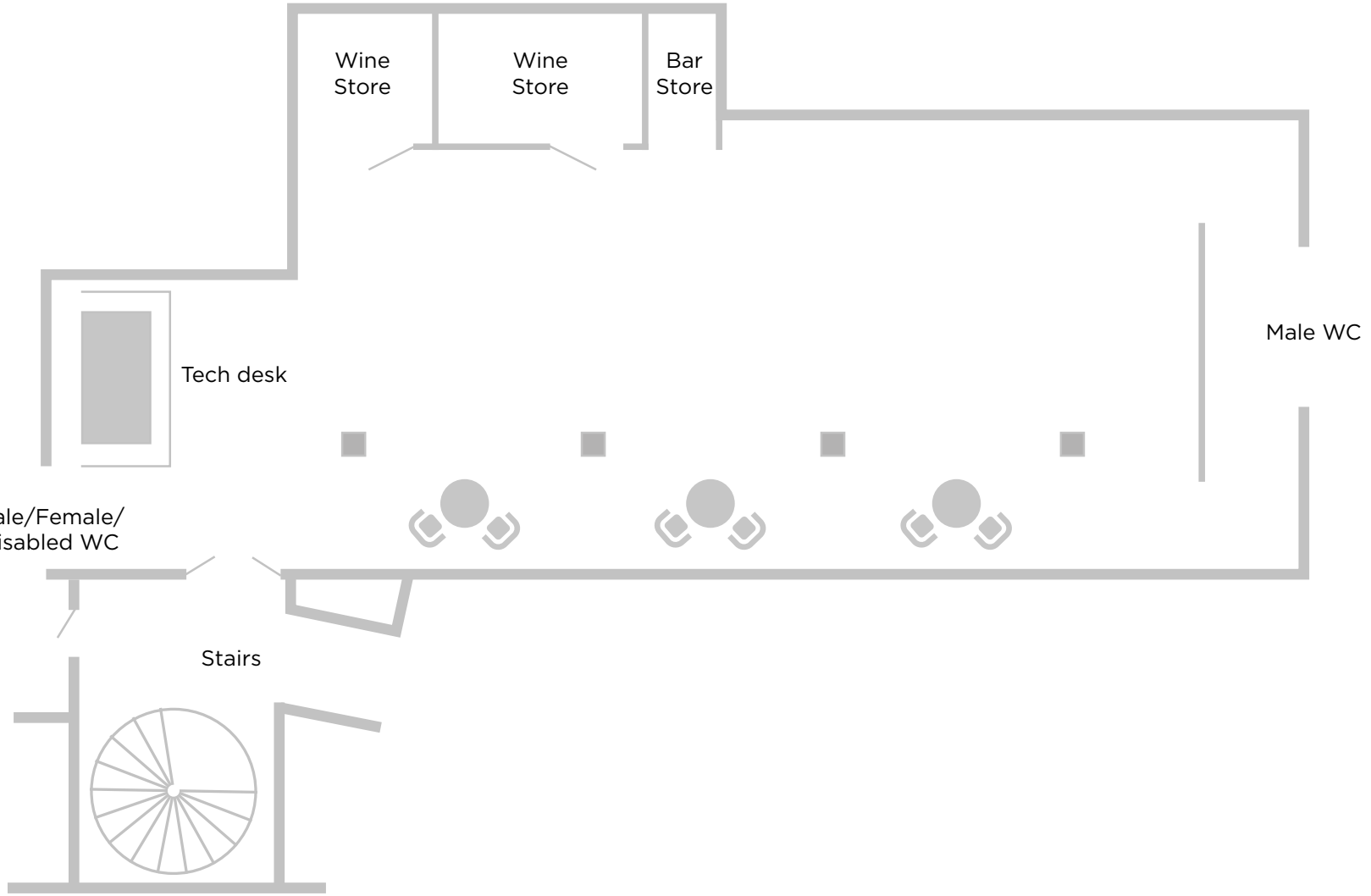
GRACE HALL
LEADENHALL

The Grace Below - Seated Dinner
Based on 30 guests



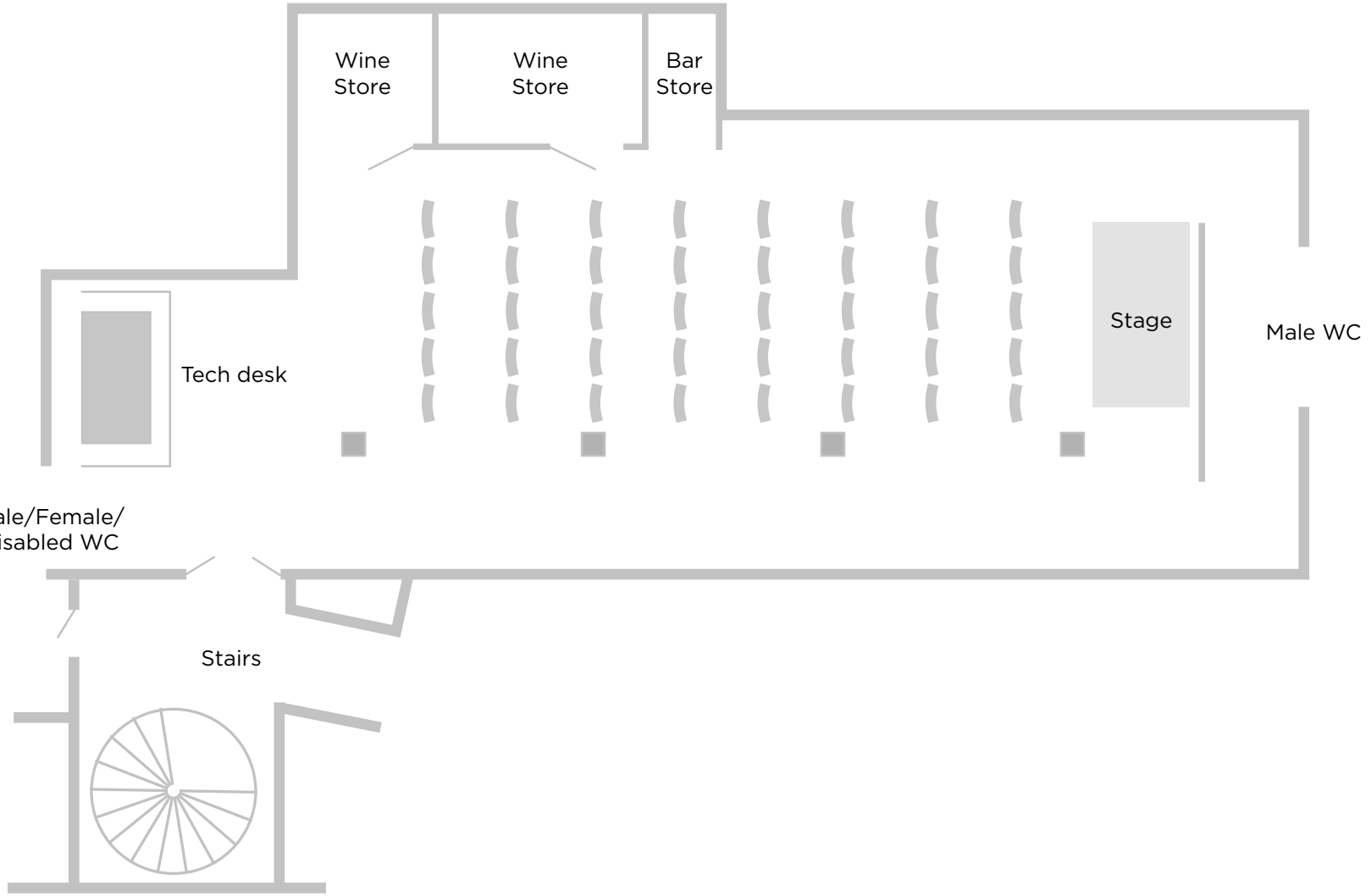
GRACE HALL
LEADENHALL

The Grace Below - Standing
Based on 120 guests



GRACE HALL
LEADENHALL

The Grace Below - Theatre
Based on 30 guests



GRACE HALL
LEADENHALL

The Grace Below - Banquet/Boardroom
Based on 34 guests

