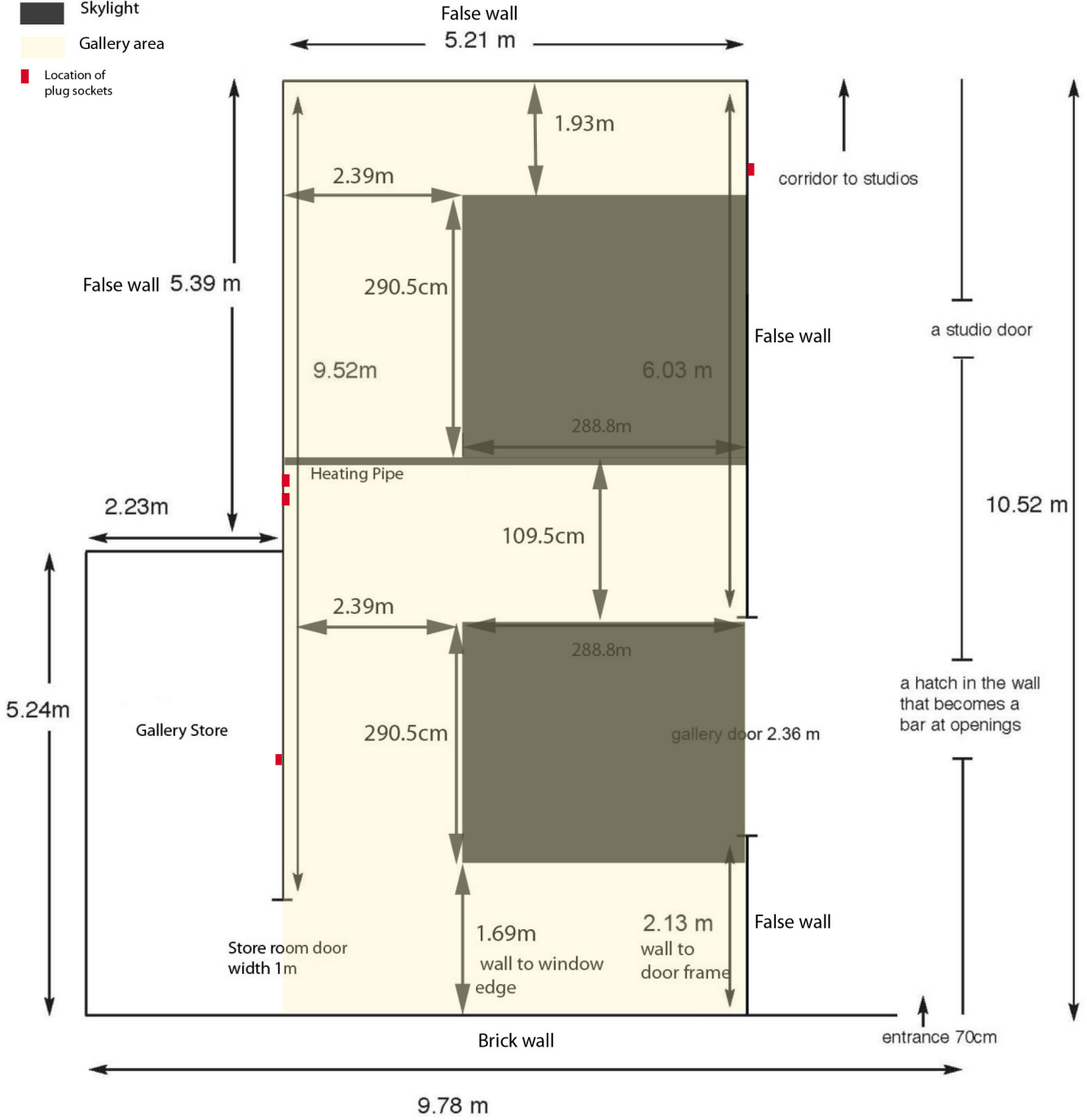
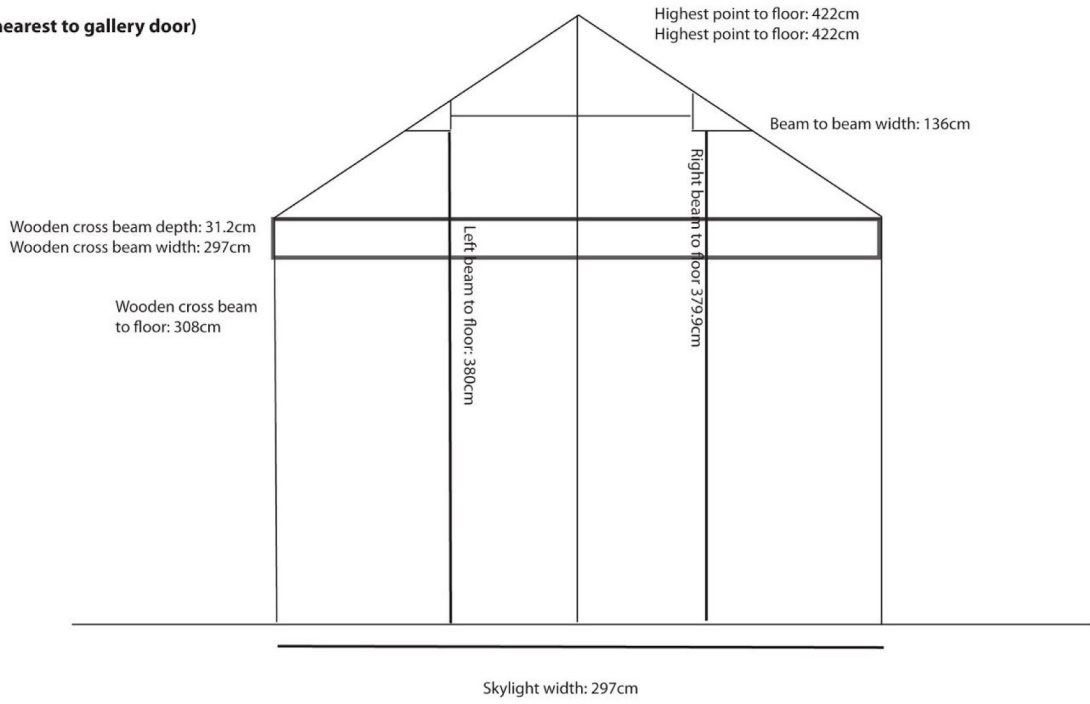


Cubitt Floor Plan
 Floor surface: concrete
 Heating Pipe to floor: 2.8m

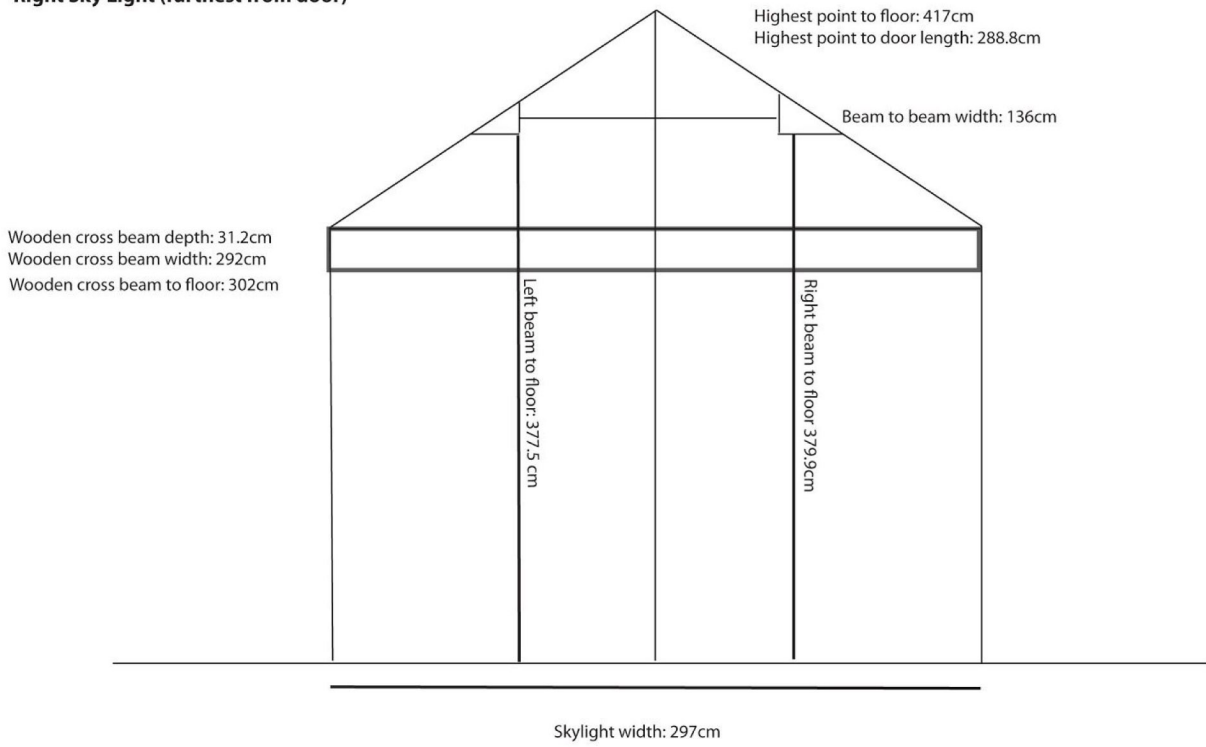
- Skylight
- Gallery area
- Location of plug sockets



Left Skylight (nearest to gallery door)



Right Sky Light (furthest from door)



Left Skylight (adjacent to gallery door)

Highest point (central beam): 4.22m

Skylight side beams to floor: 3.8m

Gap between side beams: 1.36m

Additional Notes:

_There are six tube lights in the gallery. All can be turned on/off individually.

_Both skylights can be covered using blackout panels.

_One brick wall and four false (wooden) walls. See floorplan.

_Concrete floor can be uneven in parts.