



TECHNICAL SPECIFICATIONS

UPDATED – JUNE 2026

For further details on any information in this document, please contact:

Chloe Harkin (Technical Manager)

T: 02871272781

E: chloeh@millenniumforum.co.uk

**Millennium Forum Theatre and Conference Centre
3 Newmarket Street
Derry/Londonderry
BT48 6EB**

CONTENTS

<u>General Information</u>	p.3
Parking, Backstage Rooms, Wardrobe, Orchestra Pit, and Accessibility aids	
<u>Stage</u>	p.4
Dimensions, Fly system, Power, Motors / Forestage Lifts, Soft Goods, Prompt Corner, Access, Rostra, Piano	
<u>Lighting</u>	p.5
Control, Dimmers, IWBs, Follow Spots, Dimensions	
<u>Sound</u>	p.5
Control, PA, Amps and Monitors	
<u>Equipment List</u>	p.6
Lighting, Sound, Miscellaneous, Broadcast	
<u>Health and Safety</u>	p.9
<u>Drawings</u>	p.10
Stage Plans, Hanging Plot	

GENERAL INFORMATION

Loading Bay and Parking

For Stage Door / Loading Bay – follow directions for Bank Place.

[what3words Navigation Link](#)

[Google Maps Navigation Link](#)

Passenger Vehicles: Onsite parking is limited to equipment vehicles only unless agreed in writing with the technical manager. Unauthorized vehicles will be asked to move and may be ticketed by traffic wardens. There are numerous pay and display carparks nearby.

Equipment Vehicles: Scenic deliveries are via the loading bay at the rear of the theatre. The access road to our loading bay is narrow, and there is only space for 1 trailer at a time. Alternative parking for any additional tipped trailers can be arranged via the Technical Manager. 1x trailer may be left at the loading bay but will need to be clear of our dry riser inlet. Number plates for all vehicles must be provided in advance.

Sleeper Buses: Permission for sleeper buses must be sought in advance and cannot be guaranteed.

Backstage Rooms

Floor	Name	Capacity	Ensuite	Wi-Fi
Ground Floor	Accessible Quick Change	1	✓	✓
	Quick Change	1		✓
	Company Office	2		✓
Second Floor	DR1	2	✓	✓
	DR2	2	✓	✓
	DR3	4	✓	✓
	DR4	4	✓	✓
	DR5	9	✓	✓
	DR6	9	✓	✓
	DR7	4	✓	✓
	DR8	5	✓	✓
	DR9	13	✓	✓

Wardrobe	Wardrobe is on level 1A – 1 level up from stage. Stacked washer / dryer. Space for two touring machines. Iron and ironing board available upon request.
Orchestra Pit	The pit can accommodate various sizes of band and orchestra. All involve seat removal. Contact us for further detail.
Accessibility Aids	Copper loop and infrared assistive hearing system are installed in the auditorium.

STAGE

Access	Loading bay at 40' trailer height loading directly onto stage right. We do <u>not</u> carry additional truck ramps in-house.										
Stage	Proscenium with small thrust (<1m). Flat, wood with matt black finish. 12m x 12m not including wing space.										
Dimensions	<table> <tr> <td>Stage front to Setting Line (upstage of Fire Curtain):</td> <td>0.9m</td> </tr> <tr> <td>Setting Line to Back Wall (upstage of Fire Curtain):</td> <td>11.5m</td> </tr> <tr> <td>Pros. Width:</td> <td>11m</td> </tr> <tr> <td>Pros. Height:</td> <td>7m</td> </tr> <tr> <td>Grid Height:</td> <td>16.65m</td> </tr> </table>	Stage front to Setting Line (upstage of Fire Curtain):	0.9m	Setting Line to Back Wall (upstage of Fire Curtain):	11.5m	Pros. Width:	11m	Pros. Height:	7m	Grid Height:	16.65m
Stage front to Setting Line (upstage of Fire Curtain):	0.9m										
Setting Line to Back Wall (upstage of Fire Curtain):	11.5m										
Pros. Width:	11m										
Pros. Height:	7m										
Grid Height:	16.65m										
Flying System	Operated from a raised platform Stage Right. 35 available bars 397.5kg double purchase counterweight system, including 1 up-and-down bar each side. 5x available 80kg hemp bars. All bars are 12m in length with some 1m extensions available.										
Stage Power	<p>Single Phase – DSL – 3x 63A, 1x 32A, 1x 16A (CeeForm 1ph) Three Phase – DSR: 1x 125A, 1x 63A, 1x 32A (Reform 3ph) 400A Power Lock connection available DSR. Note: We have a 63A/3ph routed from SR to SL.</p>										
Forestage Lifts	2 forestage lifts for orchestra pit, or to extend the apron by 1.9m (L2 only) or 3.6m (L1 +2). Contact to discuss as seat kills apply.										
Soft Goods	We have in black serge: borders x5, soft leg pairs x4, full tabs, 1x cyclorama, and 1x 12x6m LED star cloth. Assorted black serge covered masking flats.										
Rostra	There are 20 2x1m and 5 1x1m decks in-house, along with a selection of various height legs.										
Prompt Corner	Prompt desk with cue light system, talk back, stage monitor – DSL										

Access Equipment 2x Zarges Skymaster combination ladder

Piano Steinway Model D. Please contact tech. manager to confirm availability. Hire and tuning costs apply.

Audience Treads Treads for stage access to the audience is possible- but requires seat kills. Please advise as early as possible as seats may otherwise be sold.

LIGHTING

Control GrandMA3 Compact XT
1x Swisson 8-way node (ran over sACN)
2x 5-way active 5-pin DMX buffers
2x 3+5-pin active DMX buffers

Control Position The standard control position is an area measuring W2.7m x D1.2m located at rear of stalls – to include both LX and sound control. This can be extended, please advise technical manager at earliest opportunity as seat kills apply.

Dimmers ADB Eurotrack – 195 ways of stage lighting (24x 25a, rest 15a with 3x 15a orchestra pit dimmers and 38x non-dims)

IWBs 1x 12m 12-way
1x 12m 24-way
2x 12m 18-way
1x cyc bar with 5 4x5kw circuits and 4 single 5kw circuits

Follow spots 2x Robert Juliat Victor 1800W MSR 7°-14.5°.

Dimensions	FOH Bridge 1 to front of stage	10.2m
	FOH Bridge 2 to front of stage	13m
	Circle Bar to front of stage	13.2m
	Upper Circle Bar to front of stage	15.4m

SOUND

Control Allen & Heath D-Live C3500 with CDM64 Mix Rack (64 in / 32 out)

Control Position The standard control position is an area measuring W2.7m x D1.2m located at rear of stalls – to include both LX and sound control. This can be extended, please advise technical manager at earliest opportunity as seat kills apply.

Sound System Comprehensive Martin Audio WPS System
*charges for use of house PA system may apply

Loudspeakers

Flown Line Array: 24x boxes WPS (Compact 8” Line Array – 12 a side)

Ground Stack: 4x boxes WPS (2 a side ground stacked on subs)

Subs: 4x SX218 Subwoofers (2 a side)

Front Fills: 5x FP6 Point Source Loudspeaker

Circle Delays: 6x FP6 Point Source Loudspeaker

Upper Circle Delays: 6x FP6 Point Source Loudspeaker

Amplification

3x IKON IK81 8-channel amplifiers to feed main array

6x IKON IK42 4-channel amplifiers to feed subs, fills and delays and ground stack

Monitors

6x Martin Audio LE200 15” Wedges

2x IKON IK41 4-channel amplifiers

EQUIPMENT LIST

Please note: Occasionally some equipment may be taken out of use for maintenance. Please check in advance as availability cannot be guaranteed.

Clearing of house LX / soft goods / equipment from bars will incur additional cost.

	Stock	Hire Charges (net per day)	Updated Notes	Jun 26
Lighting Equipment				
ETC Source 4 LED Series 3 Lustr X8 with 15-30 and 25-50 Zoom Lens Tube	5	-		
Chauvet R3 LED moving head	12	-		
Chauvet Maverik MKII LED profiles	12	-		
Chauvet R3 LED Spot	4	-		
Elation Chorusline 16 LED Battens	8	-		
ADJ Jolts	6	-		
Martin Atomic 3000 Strobe	1	-		

ACP 1004C Quad Floods 1200w	5	-	
ACP 1004H Groundrow Floods 1200w	6	-	
F101 Fresnels 1200w x13-59 (w/ barn doors)	16	-	
F201 Fresnels 1200w x8.5-54 (w/ barn doors)	8	-	
C103 Fresnels 1200w x7-61 (w/ barn doors)	18	-	
DW105 Zoom Condenser Spotlights 1200w x15-38	16	-	
DS105 Condenser Spotlights 1200w x15-31	19	-	
DSN105 Zoom Condenser Spotlights 1200w x12-23	9	-	
DS205 Zoom Condenser Spotlights 2000w x15-31	5	-	
Robert Juliat Victor 1800W MSR 7°-14.5°	2	-	Operator charges apply
Thomas Parcans 1000w (CP62s)	48	-	
DS51 Zoom Profile Spotlights 650w x18-38	4	-	
Single Cell ADB 1k Floods	12	-	
14m multi with 6-channel drop boxes and spiders	4	-	
Sound Equipment			
Sennheiser G3 Radio Packs (incl. belt pouches)	16	£17.50/unit/day	Battery charges additional
Sennheiser G3 Hand Held	4	£17.50/unit/day	Battery charges additional
Shure SM58	7	-	
Shure SM57	3	-	
Sennheiser E945	1	-	
PCC-160 Crown Float Mics	2	-	
Audio Technica AT857QML	2	-	
Audio Technica AES100	4	-	
C414	4	-	
Sennheiser E904	3		
DI Box	8	-	
Audix D6 (Bass Drum)	1	-	
Audix D4 (Bass Drum / Floor Tom)	1	-	
Audix D2 (Tom)	2	-	
Audix i-5 (snare)	1	-	
Audix ADx451 (OH / Hi-hat)	2	-	
Tall Mic Stands	14	-	
Short Mic Stands	4	-	
RAT Music Stands	18	-	+1 conductor stand
Misc.			

Cue Lights with trailing cables	8	-	
Canford Comms System	8	-	
Eartec Ultralite Wireless Comms System	8	Contact to discuss pricing	
Unique Hazer	2	-	£10/ consumable charge
Chauvet Cloud 9 Low Foggers	2	Contact to discuss pricing and availability.	
ADJ Smoke Jets	4		
Snow Boy SP machines	4		
DJ Power Cold Spark Machines	2		
Magic FX Effect'ivator 1	1		
Confetti Cannon	2		
Le Maître Pyro Box Pro Stage 6-way	1		
Pyro Box	14		
12x6m LED star cloth	1	-	
Panasonic MZ14 14000lm Laser Projector	1	£175/day	Standard and short throw lenses available.
10'x 16' front projection screen	1	-	
12m x 7m rear projection screen	1	-	Significantly limits stage playing area.
Steinway Model D Grand Piano	1	£250	Includes tuning.
Multi's			
Full In-house patch system (100+ mic lines and 48 returns)			
15m 12-way sub multi with stage box	2	-	
20m 16-way sub multi with stage box	2	-	
Visitors multi to FOH 40/8 with full passive split	1	-	
Broadcast			
Datavideo HS-1600T 4-channel switcher	1	Charges vary depending on set-up. Please contact to discuss the specific needs of your event.	
PTC-150 HD/SD PTZ Camera	3		
Blackmagic Design Web Presenter	1		
Motors			
1-tonne Lodestar Motors for PA Hang	2	£250 per use	Must be booked in advance.

HEALTH AND SAFETY

Policy:

Millennium Forum's full Health and Safety Policy and RAMS are available upon request.

C.D.M

Should your production involve 'construction' work – you will be responsible for adhering to the Construction Design & Management Regulations 2015.

Risk Assessments:

We require relevant risk assessments if your production involves any activity that may be characterised as causing significant risk. This includes but is not limited to: pyrotechnics, firearms, naked flames, water, hazardous substances, special effects, lasers, strobes, animals and children. You should also ensure you are able to produce up-to-date certification for any equipment that requires it e.g. PAT, LOLER, Flame proofing etc.

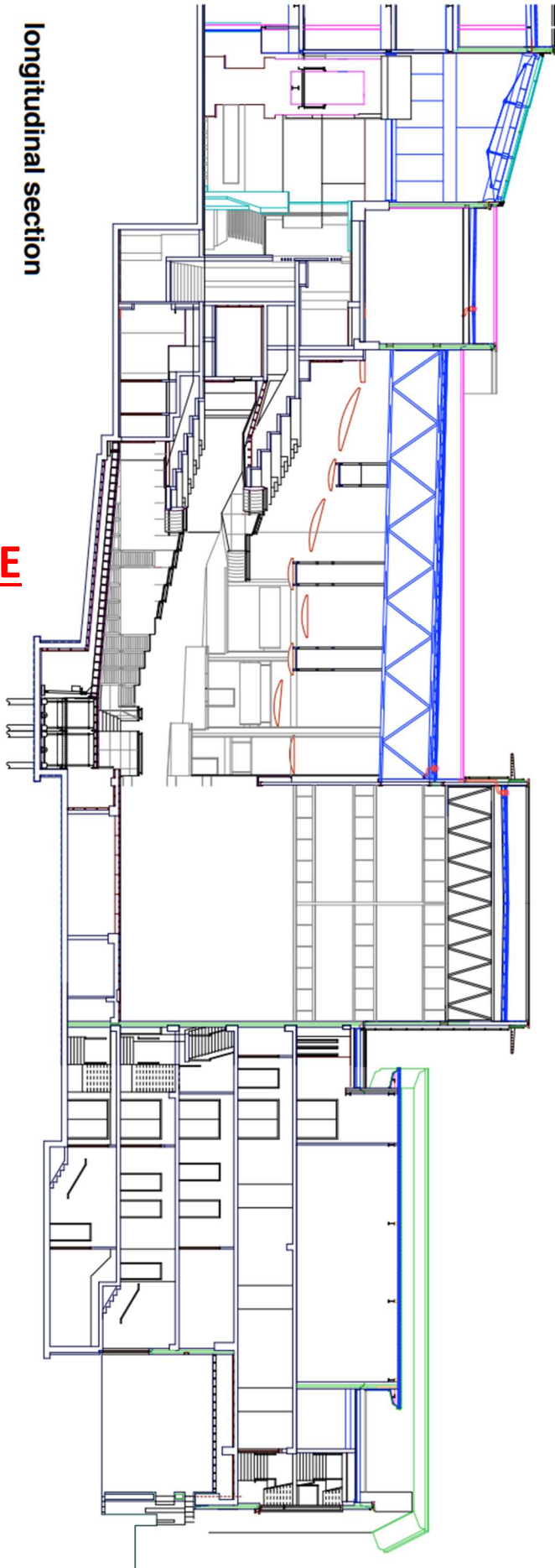
Fire Safety:

Millennium Forum full fire and emergency evacuation policy is available upon request. The procedure for visiting companies can be found posted on the company notice board, in the company manager's room and in all dressing rooms.

Tool Box Talk / Safety Induction:

All visiting company staff involved in fit-ups and load-outs must read our Backstage Safety Induction prior to work on stage commencing.

longitudinal section



NOT TO SCALE

HANGING PLOT

An .xlsx file of the below is available to download on the Millennium Forum website.

SWL Double Purchase Counterweight Flying System: 397.5kg per bar

SWL Hemp Flying System: 80kg per bar

BAR	FLYING PIECE	DIST. (M)	KG	NOTES
1	HOUSE TABS	0		
2		0.1		
3		0.42		
4		0.63		
5				side bar - up and down SL
Hemp 1				
6		1.05		Long Cradle
Hemp 2				
7		1.57		
8 is omitted				
9				short bar- only comes in to 8m above stage
10 is omitted				
11		2.42		
12		2.63		
13		2.84		
14	-	3.05	-	BAR 14 is currently not operational
Hemp 3				
15		3.76		long cradle
Hemp 4				
16 is omitted				
17		4.18		
18		4.39		
19		4.6		
20		4.81		
21		5.02		
22		5.74		
23		5.95		
24		6.15		
25 is omitted				
26		6.57		Long Cradle
27 is omitted				
28		6.99		
Hemp 5				
29		7.2		
30 is omitted				
31		7.92		
32		8.13		
33		8.34		
34		8.55		
35		8.76		
36		8.97		
37		9.18		Long Cradle
38 is omitted				
39		9.9		
40		10.11		
41		10.32		
42		10.54		
43				side bar- up and down SR
44		10.96		
45		11.17		