



TECHNICAL SPECIFICATIONS

UPDATED – APRIL 2026

For further details on any information in this document, please contact:

Chloe Harkin (Technical Manager)
T: 02871272781
E: chloeh@millenniumforum.co.uk

**Millennium Forum Theatre and Conference Centre
3 Newmarket Street
Derry/Londonderry
BT48 6EB**

CONTENTS

| | |
|---|-------------|
| <u>General Information</u> | p.3 |
| Parking, Backstage Rooms, Wardrobe, Orchestra Pit, and Accessibility aids | |
| <u>Stage</u> | p.4 |
| Dimensions, Fly system, Power, Motors / Forestage Lifts, Soft Goods, Prompt Corner, Access, Rostra, Piano | |
| <u>Lighting</u> | p.5 |
| Control, Dimmers, IWBs, Follow Spots, Dimensions | |
| <u>Sound</u> | p.6 |
| Control, PA, Amps and Monitors | |
| <u>Equipment List</u> | p.8 |
| Lighting, Sound, Miscellaneous, Broadcast | |
| <u>Health and Safety</u> | p.9 |
| <u>Drawings</u> | p.10 |
| Stage Plans, Hanging Plot | |

GENERAL INFORMATION

Loading Bay and Parking

For Stage Door / Loading Bay – follow directions for Bank Place.

[what3words Navigation Link](#)

[Google Maps Navigation Link](#)

Passenger Vehicles: Onsite parking is limited to equipment vehicles only unless agreed in writing with the technical manager. Unauthorized vehicles will be asked to move and may be ticketed by traffic wardens. There are numerous pay and display carparks nearby.

Equipment Vehicles: Scenic deliveries are via the loading bay at the rear of the theatre. The access road to our loading bay is narrow, and there is only space for 1 trailer at a time. Alternative parking for any additional tipped trailers can be arranged via the Technical Manager. 1x trailer may be left at the loading bay but will need to be clear of our dry riser inlet. Number plates for all vehicles must be provided in advance.

Sleeper Buses: Permission for sleeper buses must be sought in advance and cannot be guaranteed.

Backstage Rooms

| Floor | Name | Capacity | Ensuite | Wi-Fi |
|--------------|-------------------------|----------|---------|-------|
| Ground Floor | Accessible Quick Change | 1 | ✓ | ✓ |
| | Quick Change | 1 | | ✓ |
| | Company Office | 2 | | ✓ |
| Second Floor | DR1 | 2 | ✓ | ✓ |
| | DR2 | 2 | ✓ | ✓ |
| | DR3 | 4 | ✓ | ✓ |
| | DR4 | 4 | ✓ | ✓ |
| | DR5 | 9 | ✓ | ✓ |
| | DR6 | 9 | ✓ | ✓ |
| | DR7 | 4 | ✓ | ✓ |
| | DR8 | 5 | ✓ | ✓ |
| | DR9 | 13 | ✓ | ✓ |

| | |
|---------------------------|---|
| Wardrobe | Wardrobe is on level 1A – 1 level up from stage. Stacked washer / dryer. Space for two touring machines. Iron and ironing board available upon request. |
| Orchestra Pit | The pit can accommodate various sizes of band and orchestra. All involve seat removal. Contact us for further detail. |
| Accessibility Aids | Copper loop and infrared assistive hearing system are installed in the auditorium. |

STAGE

| | | | | | | | | | | | |
|--|--|--|------|--|-------|--------------|-----|---------------|----|--------------|--------|
| Access | Loading bay at 40’ trailer height loading directly onto stage right. We do <u>not</u> carry additional truck ramps in-house. | | | | | | | | | | |
| Stage | Proscenium with small thrust (<1m). Flat, wood with matt black finish. 12m x 12m not including wing space. | | | | | | | | | | |
| Dimensions | <table> <tr> <td>Stage front to Setting Line (upstage of Fire Curtain):</td> <td>0.9m</td> </tr> <tr> <td>Setting Line to Back Wall (upstage of Fire Curtain):</td> <td>11.5m</td> </tr> <tr> <td>Pros. Width:</td> <td>11m</td> </tr> <tr> <td>Pros. Height:</td> <td>7m</td> </tr> <tr> <td>Grid Height:</td> <td>16.65m</td> </tr> </table> | Stage front to Setting Line (upstage of Fire Curtain): | 0.9m | Setting Line to Back Wall (upstage of Fire Curtain): | 11.5m | Pros. Width: | 11m | Pros. Height: | 7m | Grid Height: | 16.65m |
| Stage front to Setting Line (upstage of Fire Curtain): | 0.9m | | | | | | | | | | |
| Setting Line to Back Wall (upstage of Fire Curtain): | 11.5m | | | | | | | | | | |
| Pros. Width: | 11m | | | | | | | | | | |
| Pros. Height: | 7m | | | | | | | | | | |
| Grid Height: | 16.65m | | | | | | | | | | |
| Flying System | Operated from a raised platform Stage Right. 35 available bars 500kg double purchase counterweight system, including 1 up-and-down bar each side. 5x available 80kg hemp bars. All bars are 12m in length with some 1m extensions available. | | | | | | | | | | |
| Stage Power | <p>Single Phase – DSL – 3x 63A, 1x 32A, 1x 16A (CeeForm 1ph) Three Phase – DSR: 1x 125A, 1x 63A, 1x 32A (Reform 3ph) 400A Power Lock connection available DSR. Note: We have a 63A/3ph routed from SR to SL.</p> | | | | | | | | | | |
| Additional Motors | 2x Permanent 1-Tonne Lodestar Motors for PA Hang. Charges Apply. Contact tech. manager to discuss additional rigging requirements. | | | | | | | | | | |
| Forestage Lifts | 2 forestage lifts for orchestra pit, or to extend the apron by 1.9m (L2 only) or 3.6m (L1 +2). Contact to discuss as seat kills apply. | | | | | | | | | | |
| Soft Goods | We have in black serge: borders x5, soft leg pairs x4, full tabs, 1x cyclorama, and 1x 12x6m LED star cloth. Assorted black serge covered masking flats. | | | | | | | | | | |

| | |
|-------------------------|--|
| Rostra | There are 20 2x1m and 5 1x1m decks in-house, along with a selection of various height legs. |
| Prompt Corner | Prompt desk with cue light system, talk back, stage monitor – DSL |
| Access Equipment | 2x Zarges Skymaster combination ladder |
| Piano | Steinway Model D. Please contact tech. manager to confirm availability. Hire and tuning costs apply. |
| Audience Treads | Treads for stage access to the audience is possible- but requires seat kills. Please advise as early as possible as seats may otherwise be sold. |

LIGHTING

| | |
|-------------------------|--|
| Control | GrandMA3 Compact XT 1x Swisson 8-way node (ran over sACN) 2x 5-way active 5-pin DMX buffers 2x 3+5-pin active DMX buffers |
| Control Position | The standard control position is an area measuring W2.7m x D1.2m located at rear of stalls – to include both LX and sound control. This can be extended, please advise technical manager at earliest opportunity as seat kills apply. |
| Dimmers | ADB Eurotrack – 195 ways of stage lighting (24x 25a, rest 15a with 3x 15a orchestra pit dimmers and 38x non-dims) |
| IWBs | 1x 12m 12-way 1x 12m 24-way 2x 12m 18-way 1x cyc bar with 5 4x5kw circuits and 4 single 5kw circuits |
| Follow spots | 2x Robert Juliat Victor 1800W MSR 7°-14.5°. |
| Dimensions | FOH Bridge 1 to front of stage 10.2m FOH Bridge 2 to front of stage 13m Circle Bar to front of stage 13.2m Upper Circle Bar to front of stage 15.4m |

SOUND

- Control** Allen & Heath D-Live C3500 with CDM64 Mix Rack (64 in / 32 out)
- Control Position** The standard control position is an area measuring W2.7m x D1.2m located at rear of stalls – to include both LX and sound control. This can be extended, please advise technical manager at earliest opportunity as seat kills apply.
- PA** 1 Nexo Geo System (including 4x front-fill speakers, and 8x circle, 4x upper circle delay speakers)
12x S805 -5 degree cabinets
2x S830 -30 degree cabinets
4x CD 12-P sub basses
2x NC 241 crossovers
3x vortex 6 Camco Amps
- Amps and Monitors** 8x Martin LE1500 Wedges
5x Yamaha stereo 1000W amplifiers

EQUIPMENT LIST

Please note: Occasionally some equipment may be taken out of use for maintenance. Please check in advance as availability cannot be guaranteed.

Clearing of house LX / soft goods / equipment from bars will incur additional cost.

| | Stock | Hire Charges (net per day) | Updated Notes |
|---|-------|-------------------------------|----------------------------|
| Lighting Equipment | | | |
| Chauvet R3 LED moving head | 12 | - | |
| Chauvet Maverik MKII LED profiles | 12 | - | |
| Chauvet R3 LED Spot | 4 | - | |
| Elation Chorusline 16 LED Battens | 8 | - | |
| ADJ Jolts | 6 | - | |
| Martin Atomic 3000 Strobe | 1 | - | |
| ACP 1004C Quad Floods 1200w | 5 | - | |
| ACP 1004H Groundrow Floods 1200w | 6 | - | |
| F101 Fresnels 1200w x13-59 (w/ barn doors) | 16 | - | |
| F201 Fresnels 1200w x8.5-54 (w/ barn doors) | 8 | - | |
| C103 Fresnels 1200w x7-61 (w/ barn doors) | 18 | - | |
| DW105 Zoom Condenser Spotlights 1200w x15-38 | 16 | - | |
| DS105 Condenser Spotlights 1200w x15-31 | 19 | - | |
| DSN105 Zoom Condenser Spotlights 1200w x12-23 | 9 | - | |
| DS205 Zoom Condenser Spotlights 2000w x15-31 | 5 | - | |
| Robert Juliat Victor 1800W MSR 7°-14.5° | 2 | - | Operator charges apply |
| Thomas Parcans 1000w (CP62s) | 48 | - | |
| DS51 Zoom Profile Spotlights 650w x18-38 | 4 | - | |
| Single Cell ADB 1k Floods | 12 | - | |
| 14m multi with 6-channel drop boxes and spiders | 4 | - | |
| Sound Equipment | | | |
| Sennheiser G3 Radio Packs (incl. belt pouches) | 16 | £17.50/unit/day | Battery charges additional |
| Sennheiser G3 Hand Held | 4 | £17.50/unit/day | Battery charges additional |
| Shure SM58 | 7 | - | |
| Shure SM57 | 3 | - | |

| | | | |
|--|----|--|---|
| Sennheiser E945 | 1 | - | |
| PCC-160 Crown Float Mics | 2 | - | |
| Audio Technica AT857QML | 2 | - | |
| Audio Technica AES100 | 4 | - | |
| C414 | 4 | - | |
| Sennheiser E904 | 3 | | |
| DI Box | 8 | - | |
| Audix D6 (Bass Drum) | 1 | - | |
| Audix D4 (Bass Drum / Floor Tom) | 1 | - | |
| Audix D2 (Tom) | 2 | - | |
| Audix i-5 (snare) | 1 | - | |
| Audix ADx451 (OH / Hi-hat) | 2 | - | |
| Tall Mic Stands | 14 | - | |
| Short Mic Stands | 4 | - | |
| RAT Music Stands | 18 | - | +1 conductor stand |
| Misc. | | | |
| Cue Lights with trailing cables | 8 | - | |
| Canford Comms System | 8 | - | |
| Eartec Ultralite Wireless Comms System | 8 | - | |
| Unique Hazer | 2 | - | £10/ consumable charge |
| Chauvet Cloud 9 Low Foggers | 2 | Contact to discuss pricing and availability. | |
| ADJ Smoke Jets | 4 | | |
| Snow Boy SP machines | 4 | | |
| DJ Power Cold Spark Machines | 2 | | |
| Magic FX Effect'ivator 1 | 1 | | |
| Confetti Cannon | 2 | | |
| Le Maître Pyro Box Pro Stage 6-way | 1 | | |
| Pyro Box | 14 | | |
| 12x6m LED star cloth | 1 | - | |
| Panasonic MZ14 14000lm Laser Projector | 1 | £175/day | Standard and short throw lenses available. |
| 10'x 16' front projection screen | 1 | - | |
| 12m x 7m rear projection screen | 1 | - | Significantly limits stage playing area. |
| Steinway Model D Grand Piano | 1 | £175/day | Tuning costs an additional £130+vat (rates may vary). |
| Multi's | | | |
| Full In-house patch system (100+ mic lines and 48 returns) | | | |
| 15m 12-way sub multi with stage box | 2 | - | |
| 20m 16-way sub multi with stage box | 2 | - | |
| Visitors multi to FOH 40/8 with full passive split | 1 | - | |
| Broadcast | | | |
| Datavideo HS-1600T 4-channel switcher | 1 | | |

| | | | |
|-------------------------------------|---|---|----------------------|
| PTC-150 HD/SD PTZ Camera | 3 | Charges vary depending on set-up. | |
| Blackmagic Design Web Presenter | 1 | Please contact to discuss the specific needs of your event. | |
| Motors | | | |
| 1-tonne Lodestar Motors for PA Hang | 2 | £250 per use | DS L&R of Pros. Arch |

HEALTH AND SAFETY

Policy:

Millennium Forum’s full Health and Safety Policy and RAMS are available upon request.

C.D.M

Should your production involve ‘construction’ work – you will be responsible for adhering to the Construction Design & Management Regulations 2015.

Risk Assessments:

We require relevant risk assessments if your production involves any activity that may be characterised as causing significant risk. This includes but is not limited to: pyrotechnics, firearms, naked flames, water, hazardous substances, special effects, lasers, strobes, animals and children. You should also ensure you are able to produce up-to-date certification for any equipment that requires it e.g. PAT, LOLER, Flame proofing etc.

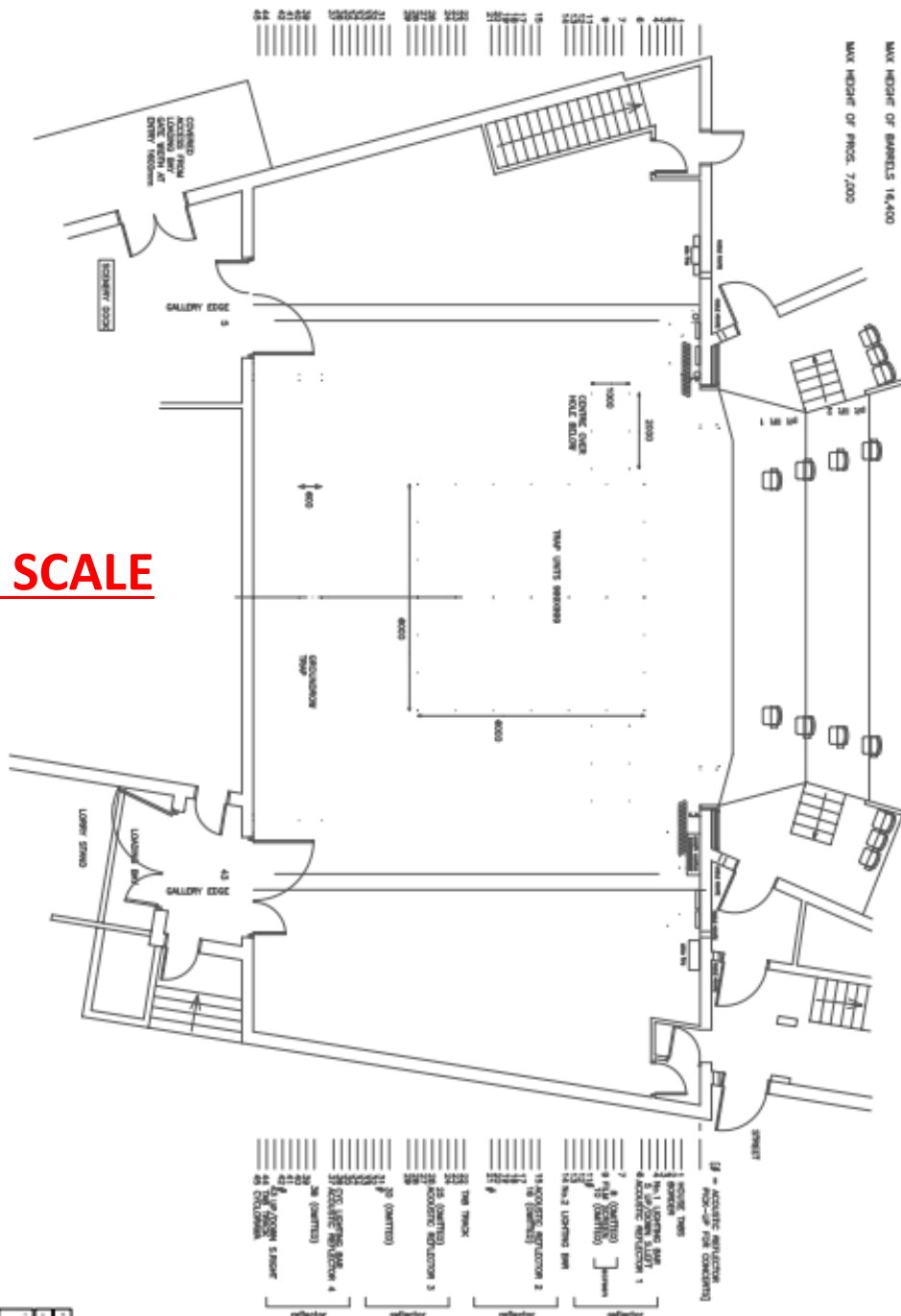
Fire Safety:

Millennium Forum full fire and emergency evacuation policy is available upon request. The procedure for visiting companies can be found posted on the company notice board, in the company manager’s room and in all dressing rooms.

PLANS

The plans below are **NOT TO SCALE**. PDF versions are available to download from the Millennium Forum Website or by request.

NOT TO SCALE



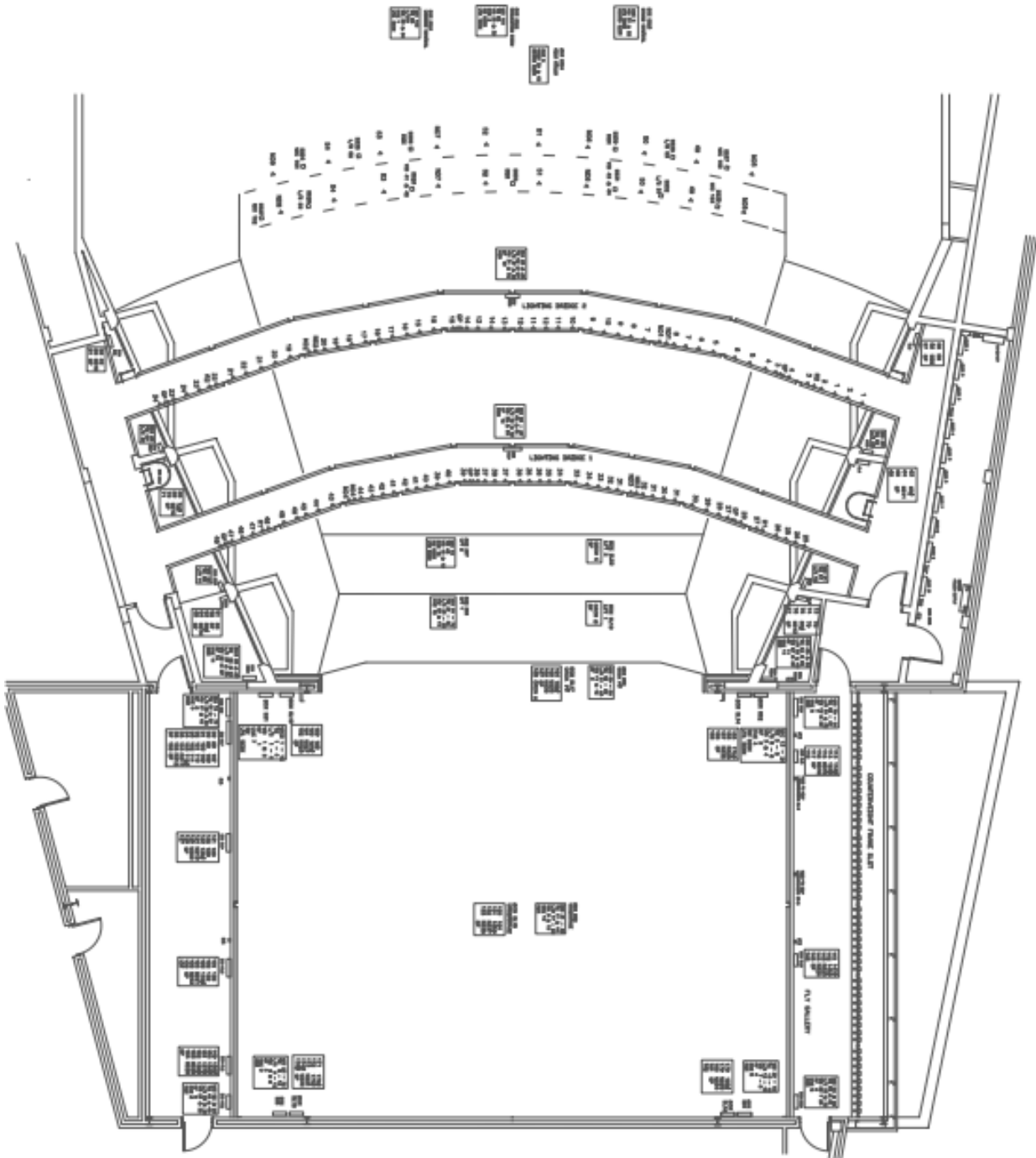
- 100 - ACoustic suspension
- 101 - Acoustic suspension
- 102 - Acoustic suspension
- 103 - Acoustic suspension
- 104 - Acoustic suspension
- 105 - Acoustic suspension
- 106 - Acoustic suspension
- 107 - Acoustic suspension
- 108 - Acoustic suspension
- 109 - Acoustic suspension
- 110 - Acoustic suspension
- 111 - Acoustic suspension
- 112 - Acoustic suspension
- 113 - Acoustic suspension
- 114 - Acoustic suspension
- 115 - Acoustic suspension
- 116 - Acoustic suspension
- 117 - Acoustic suspension
- 118 - Acoustic suspension
- 119 - Acoustic suspension
- 120 - Acoustic suspension
- 121 - Acoustic suspension
- 122 - Acoustic suspension
- 123 - Acoustic suspension
- 124 - Acoustic suspension
- 125 - Acoustic suspension
- 126 - Acoustic suspension
- 127 - Acoustic suspension
- 128 - Acoustic suspension
- 129 - Acoustic suspension
- 130 - Acoustic suspension
- 131 - Acoustic suspension
- 132 - Acoustic suspension
- 133 - Acoustic suspension
- 134 - Acoustic suspension
- 135 - Acoustic suspension
- 136 - Acoustic suspension
- 137 - Acoustic suspension
- 138 - Acoustic suspension
- 139 - Acoustic suspension
- 140 - Acoustic suspension
- 141 - Acoustic suspension
- 142 - Acoustic suspension
- 143 - Acoustic suspension
- 144 - Acoustic suspension
- 145 - Acoustic suspension
- 146 - Acoustic suspension
- 147 - Acoustic suspension
- 148 - Acoustic suspension
- 149 - Acoustic suspension
- 150 - Acoustic suspension
- 151 - Acoustic suspension
- 152 - Acoustic suspension
- 153 - Acoustic suspension
- 154 - Acoustic suspension
- 155 - Acoustic suspension
- 156 - Acoustic suspension
- 157 - Acoustic suspension
- 158 - Acoustic suspension
- 159 - Acoustic suspension
- 160 - Acoustic suspension
- 161 - Acoustic suspension
- 162 - Acoustic suspension
- 163 - Acoustic suspension
- 164 - Acoustic suspension
- 165 - Acoustic suspension
- 166 - Acoustic suspension
- 167 - Acoustic suspension
- 168 - Acoustic suspension
- 169 - Acoustic suspension
- 170 - Acoustic suspension
- 171 - Acoustic suspension
- 172 - Acoustic suspension
- 173 - Acoustic suspension
- 174 - Acoustic suspension
- 175 - Acoustic suspension
- 176 - Acoustic suspension
- 177 - Acoustic suspension
- 178 - Acoustic suspension
- 179 - Acoustic suspension
- 180 - Acoustic suspension
- 181 - Acoustic suspension
- 182 - Acoustic suspension
- 183 - Acoustic suspension
- 184 - Acoustic suspension
- 185 - Acoustic suspension
- 186 - Acoustic suspension
- 187 - Acoustic suspension
- 188 - Acoustic suspension
- 189 - Acoustic suspension
- 190 - Acoustic suspension
- 191 - Acoustic suspension
- 192 - Acoustic suspension
- 193 - Acoustic suspension
- 194 - Acoustic suspension
- 195 - Acoustic suspension
- 196 - Acoustic suspension
- 197 - Acoustic suspension
- 198 - Acoustic suspension
- 199 - Acoustic suspension
- 200 - Acoustic suspension

ajawm

Architectural & Interior Design

100, 101, 102, 103, 104, 105, 106, 107, 108, 109, 110, 111, 112, 113, 114, 115, 116, 117, 118, 119, 120, 121, 122, 123, 124, 125, 126, 127, 128, 129, 130, 131, 132, 133, 134, 135, 136, 137, 138, 139, 140, 141, 142, 143, 144, 145, 146, 147, 148, 149, 150, 151, 152, 153, 154, 155, 156, 157, 158, 159, 160, 161, 162, 163, 164, 165, 166, 167, 168, 169, 170, 171, 172, 173, 174, 175, 176, 177, 178, 179, 180, 181, 182, 183, 184, 185, 186, 187, 188, 189, 190, 191, 192, 193, 194, 195, 196, 197, 198, 199, 200

NOT TO SCALE



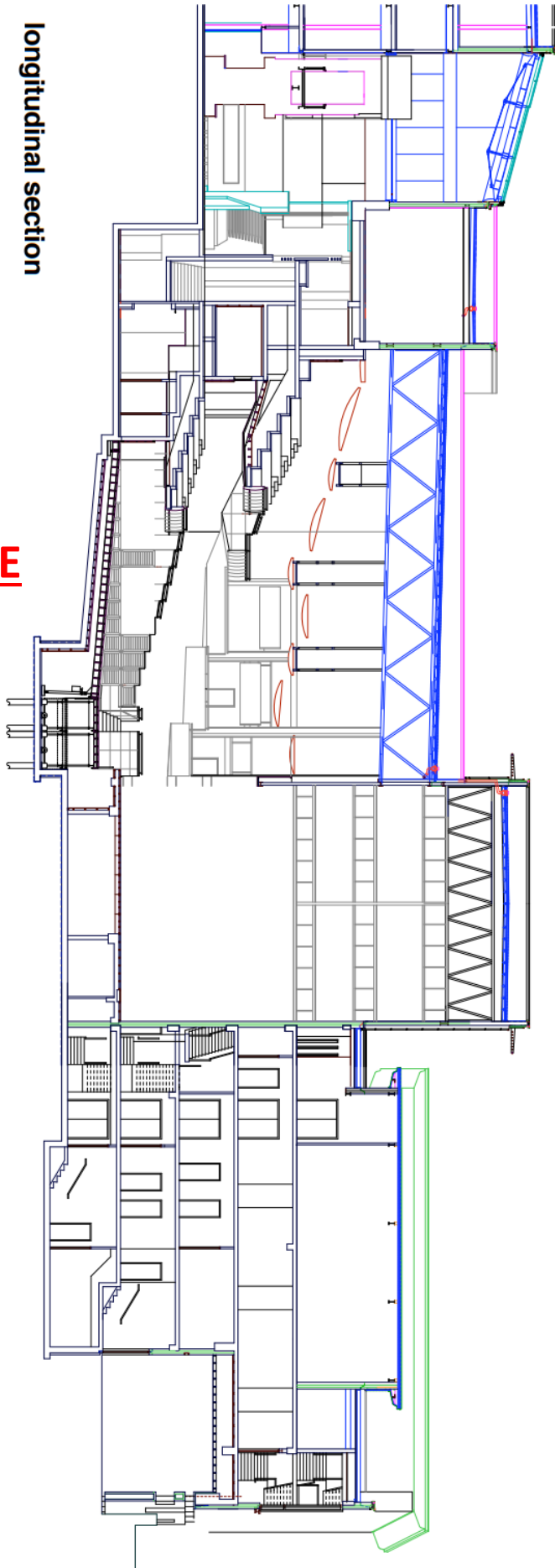
| | | |
|-----|-------------------|------------|
| NO. | REVISION | DATE |
| 1 | ISSUED FOR TENDER | 15/08/2023 |
| 2 | ISSUED FOR TENDER | 15/08/2023 |
| 3 | ISSUED FOR TENDER | 15/08/2023 |
| 4 | ISSUED FOR TENDER | 15/08/2023 |
| 5 | ISSUED FOR TENDER | 15/08/2023 |
| 6 | ISSUED FOR TENDER | 15/08/2023 |
| 7 | ISSUED FOR TENDER | 15/08/2023 |
| 8 | ISSUED FOR TENDER | 15/08/2023 |
| 9 | ISSUED FOR TENDER | 15/08/2023 |
| 10 | ISSUED FOR TENDER | 15/08/2023 |

ajawm
ARCHITECTS
100, 101, 102, 103, 104, 105, 106, 107, 108, 109, 110, 111, 112, 113, 114, 115, 116, 117, 118, 119, 120, 121, 122, 123, 124, 125, 126, 127, 128, 129, 130, 131, 132, 133, 134, 135, 136, 137, 138, 139, 140, 141, 142, 143, 144, 145, 146, 147, 148, 149, 150, 151, 152, 153, 154, 155, 156, 157, 158, 159, 160, 161, 162, 163, 164, 165, 166, 167, 168, 169, 170, 171, 172, 173, 174, 175, 176, 177, 178, 179, 180, 181, 182, 183, 184, 185, 186, 187, 188, 189, 190, 191, 192, 193, 194, 195, 196, 197, 198, 199, 200

100, 101, 102, 103, 104, 105, 106, 107, 108, 109, 110, 111, 112, 113, 114, 115, 116, 117, 118, 119, 120, 121, 122, 123, 124, 125, 126, 127, 128, 129, 130, 131, 132, 133, 134, 135, 136, 137, 138, 139, 140, 141, 142, 143, 144, 145, 146, 147, 148, 149, 150, 151, 152, 153, 154, 155, 156, 157, 158, 159, 160, 161, 162, 163, 164, 165, 166, 167, 168, 169, 170, 171, 172, 173, 174, 175, 176, 177, 178, 179, 180, 181, 182, 183, 184, 185, 186, 187, 188, 189, 190, 191, 192, 193, 194, 195, 196, 197, 198, 199, 200

longitudinal section

NOT TO SCALE



HANGING PLOT

An .xlsx file of the below is available to download on the Millennium Forum website.

SWL Double Purchase Counterweight Flying System: 500kg per bar

SWL Hemp Flying System: 80kg per bar

| BAR | FLYING PIECE | DIST. (M) | KG | NOTES |
|---------------|--------------|--------------|----|--|
| 1 | HOUSE TABS | 0 | | |
| 2 | | 0.1 | | |
| 3 | | 0.42 | | |
| 4 | | 0.63 | | |
| 5 | | | | side bar - up and down SL |
| Hemp 1 | | | | |
| 6 | | 1.05 | | long cradle |
| Hemp 2 | | | | |
| 7 | | 1.57 | | |
| 8 is omitted | | | | |
| 9 | | | | short bar- only comes in to 8m above stage |
| 10 is omitted | | | | |
| 11 | | 2.42 | | |
| 12 | | 2.63 | | |
| 13 | | 2.84 | | |
| 14 | | 3.05 | | |
| Hemp 3 | | | | |
| 15 | | 3.76 | | long cradle |
| Hemp 4 | | | | |
| 16 is omitted | | | | |
| 17 | | 4.18 | | |
| 18 | | 4.39 | | |
| 19 | | 4.6 | | |
| 20 | | 4.81 | | |
| 21 | | 5.02 | | |
| 22 | | 5.74 | | |
| 23 | | 5.95 | | |
| 24 | | 6.15 | | |
| 25 is omitted | | | | |
| 26 | | 6.57 | | long cradle |
| 27 is omitted | | | | |
| 28 | | 6.99 | | |
| Hemp 5 | | | | |
| 29 | | 7.2 | | |
| 30 is omitted | | | | |
| 31 | | 7.92 | | |
| 32 | | 8.13 | | |
| 33 | | 8.34 | | |
| 34 | | 8.55 | | |
| 35 | | 8.76 | | |
| 36 | | 8.97 | | |
| 37 | | 9.18 | | long cradle |
| 38 is omitted | | | | |
| 39 | | 9.9 | | |
| 40 | | 10.11 | | |
| 41 | | 10.32 | | |
| 42 | | 10.54 | | |
| 43 | | | | side bar- up and down SR |
| 44 | | 10.96 | | |
| 45 | | 11.17 | | |