

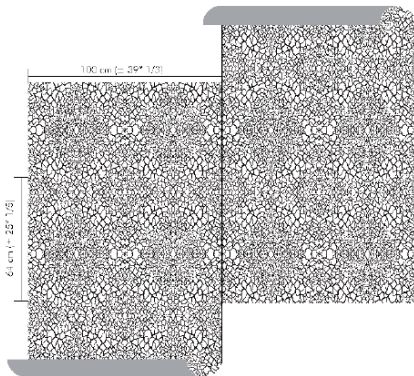
OMEXCO
Fine Belgian Wallcoverings



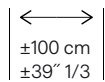
NASHIRA
NON-WOVEN TEXTILE WALLCOVERING



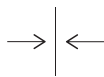
NB: The portrayed colours may differ from reality.



References NAI 3
Composition: mixture of cellulose, polyester and sisal fibres
Weight: $\pm 146 \text{ g/m}^2$ ($\pm 4,26 \text{ oz/sq yd}$)
Custom colouring on request.



Width of the wallcovering.



Pattern repeat is 64 cm ($\pm 25'' 1/5$) and the design needs a straight match.



Fire resistant:
EU: B, s1-d0
US: class A



Ecological.



Light resistant:
Xeno test 6-7.



Sold by the metre/yard.
No minimum.



This design requires reverse hanging.



Printed with solar energy.



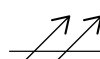
Washable after installation.



Seamless.



Manufactured with recycled fibres.



Breathable.



Apply a ready mixed PVA or EVA clear adhesive directly to the wall, no need to humidify the back of the wallcovering.



Product complying with the council directive 2014/90/EU on marine equipment.



The mark of responsible forestry

More information and samples are available on request.

Omexco n.v. - Ambachtenlaan 12 - 3001 Heverlee - Belgium
t. +32 16 40 18 80 - info@omexco.com - www.omexco.com