

**oraimo**  
smart accessories

**SmartClipper 2**  
OPC-CL30

## WELCOME GUIDE

### IMPORTANT SAFETY INSTRUCTIONS

When using this product, basic precautions should always be followed, including the following:

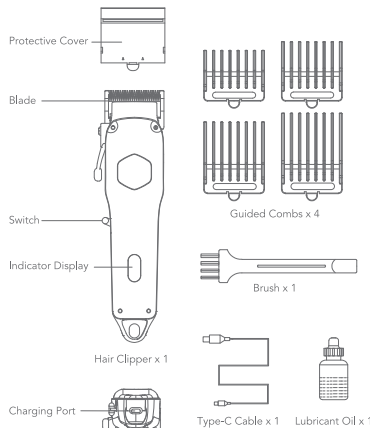
**Danger**

1. This product and its accessories are not toys. Please put them out of the reach of children to avoid danger.
  2. Do not use wet hand to plug and pull the power cord, keep the power cord away from sticky liquid or other liquid.
  3. Make sure to keep the hair clipper's body, adapter and power cord dry. Do not use it in bathroom.
  4. This product contains a built-in rechargeable battery. Do not drop the battery into fire and never charge, use or place it at the place where temperature is high.
  5. Do not use the hair clipper when its power cord or adapter is damaged or when the connection between it and the electric outlet is loose.
- Warning: Please keep the hair clipper's body dry.

**Warning:**

1. Ensure to keep the power cord and this product dry. Do not rinse the hair clipper with water.
2. Before connecting the power cord and charging, make sure that the voltage marked on the body of this product matches the local power supply voltage
3. If the power cord is damaged or lost, please purchase the original model from the manufacturer or after-sales maintenance department for replacement.
4. Please use and store this product at a place where the temperature is between 5°C and 35°C
5. When any abnormality or malfunction of this product is found stop using it immediately. Please deal with the problem according to the type of malfunction and if necessary, take it to the maintenance department of our company for repair.
6. Do not use broken or damaged trimming comb.
7. Do not disassemble the hair clipper's body for battery replacement.
8. Do not immerse this product in water or any liquid.
9. Do not knock down or drop this product. If it is damaged due to collision or fall please stop using it.
10. Persons with physical disabilities, mental disorders or lack of relevant experience and knowledge (including children) should use this product under the supervision and guidance of their guardians.
11. Please do not use it on animals.
12. Before taking out the battery, the motor must be power off.

### PACKAGE CONTENTS



### USING INSTRUCTIONS

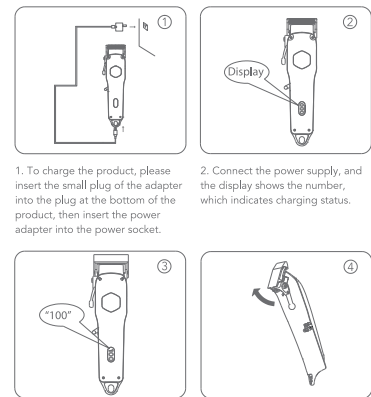
Size: 195\*54\*42.5mm  
Product Material: ABS+PC  
Input Voltage: 5V=1A  
Rated Power: 5W

Blade Material: Stainless Steel  
Charging Time: 3 hour  
Full Working Time: Up to 2.5 hours

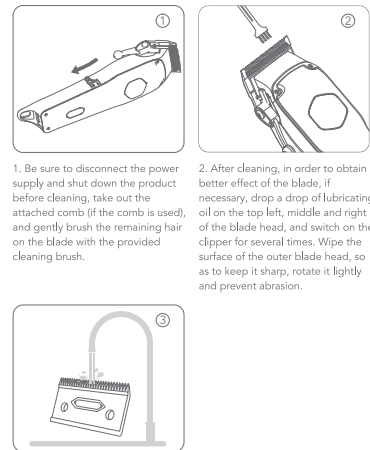
### USING INSTRUCTIONS

When cutting hair, take off blade protective cover, push on the switch and then move the blade head slowly against the direction of hair growth, and move in a straight and circuitous way.

### CHARGING THE CLIPPER

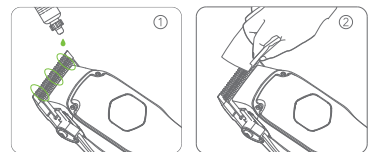


### CARE AND MAINTENANCE



**NOTE:** Do not wipe the entire electric hair clipper with a wet cloth to avoid damaging the electronic components.

### MAINTAINING THE TRIMMER



**NOTE:**

Be sure to apply lubricating oil in the following situations:  
After a cumulative usage time of 30 minutes  
After long periods of non-use  
After cleaning  
Other necessary situations