



WELCOME GUIDE

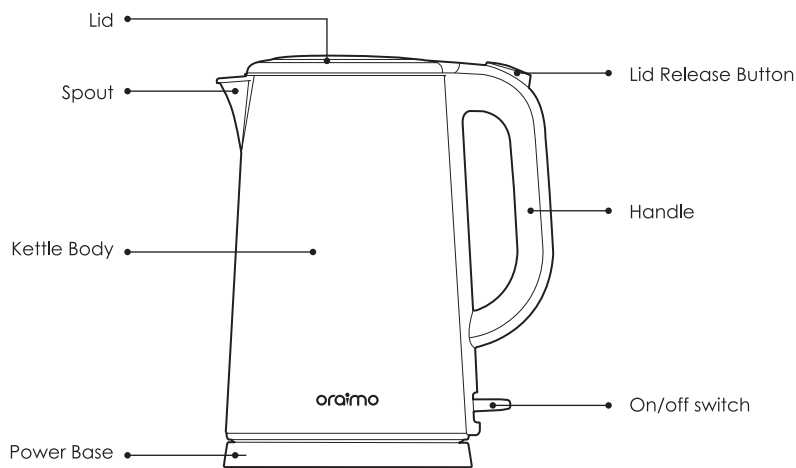
*Please read the instructions carefully before using the product and keep the user manual in a safe place for future reference.

SmartKettle

== OH-K20 ==

Electric Kettle

Product Overview



Basic Product Specifications

Model	Rated Power	Rated Voltage	Capacity
OH-K20	1500-1800W	220-240V/50Hz	1.7L

Package Contents

Electric Kettle x1

Base x1

Mains Cord

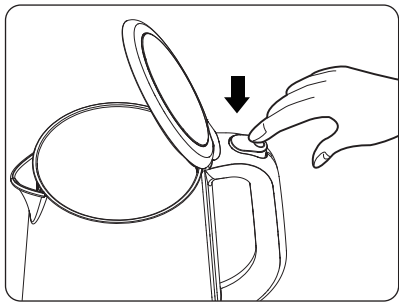
Welcome Guide x1

Warranty Extended Card x1

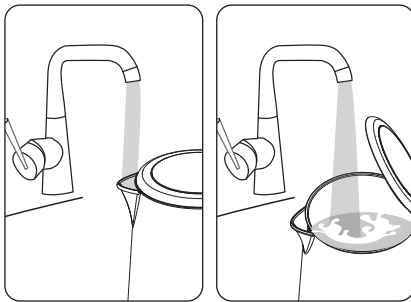
Before First Use

When using the kettle for the first time, the water should be filled into the highest level and get boiled. Boiling the water 1-2 times, draining the water, and then you can start using the kettle.

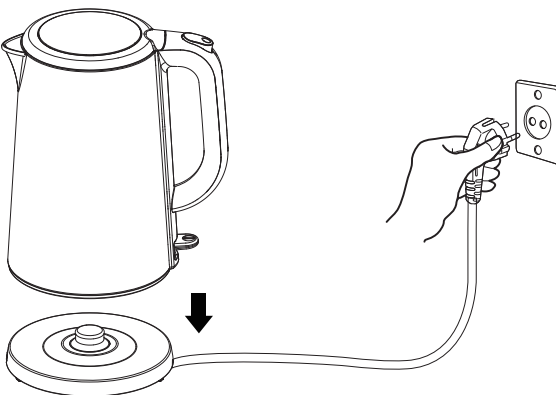
Usage Instruction



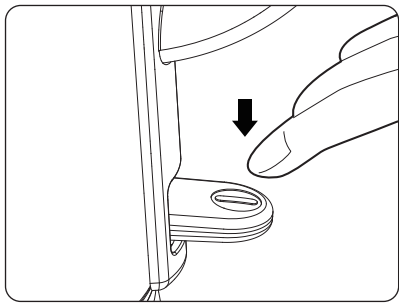
1.Press the lid release button and the kettle gets opened.



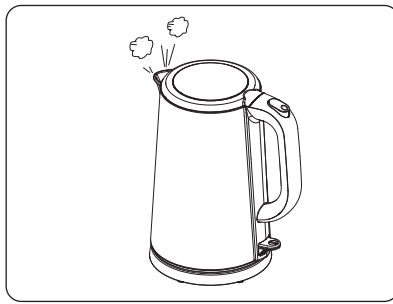
2.Fill the kettle with water through the spout or the open lid.
*Fill the kettle with water at least to 500ml and at the maximum of 1.7L.



3.Close the lid and place the kettle on the base, plugging in the socket.



4.Press the on switch.



5.The on switch will "click", switching off automatically when water gets boiled. The indicator light goes out at the same time.

Trouble Shooting

Problems	Cause	Solutions
Indicator light is not on	Mains cord is not plugged in properly	Check it and plug in a right way
	The circuit board get broken	Contact us for after-sale repairing
Not heating	The on button is not pressed properly	Check it and place in a right way
	The heating tube/circuit board/thermostat gets broken	Contact us for after-sale repairing
The button doesn't switch off automatically when water is boiling.	Damage of the kettle	Contact us for after-sale repairing

Important Safety Instructions

1. The kettle should be kept away from children.
2. It is strictly forbidden to immerse the electric kettle, mains cord, base n water or other liquids. Liquid immersion is strictly prohibited in on/off button area.
3. Please use the safety handle when taking the kettle, do not touch the hot pot body or the hot steam overflowing from the spout and pot.
4. When boiling water, please cover the lid properly. Do not open the lid during the boiling process to avoid burns.
5. When the kettle get damaged, please do not disassemble the kettle or the base by yourself, and contact us to repair the product.
6. Do not hang the mains cord on the edge of the table or touch objects with high temperature.
7. Please confirm that the mains cord is disconnected and wait for the kettle body to cool before cleaning.
8. When the product is not used for a long time, please unplug it from the socket.
9. This product can only be used to boil water, don't boil other objects or liquid by using kettle.
10. It is forbidden to use the product on a sloping or unstable table.



www.oraimo.com



Oraimo accessories

Keep Exploring