

Charge Your Shaving Machine

Hair Clipper Status Indicator		Status
	Steady red	Low battery
	Flow in red	Being charged
	Steady white	Fully charged

When the power supply is insufficient and it cannot be turned on, it can be directly connected to the power cord. If it is not in use for a long time, please be fully charged at least once every half a year, and it can be used for about 90 minutes in the full power state.

Cleaning and Maintenance

Step 1
When starting to use this product, a little of lubricating oil should be added to the teeth of the tool bit.

Step 2
Turn off the power switch and remove the plug of the power adapter from the power outlet.

Step 3
Remove the limit comb, remove the tool bit, use the attached cleaning brush, and brush off the shavings in the slot part of the tool bit.

Warning: this machine is non-waterproof, please do not rinse the body of the shaving machine with water.

Important Safety Instructions

When using this product, basic precautions should always be followed, including the following:

Danger:

- This product and accessories are not toys, please put them out of the reach of children to avoid danger.
- Do not plug or unplug the power cord with wet hands to prevent the power cord from touching the liquid.
- Please make sure the body, adapter and power cord are dry and do not use it in the bathroom.
- This product has a built-in rechargeable battery, do not throw it into the fire, or charge, use or place it at a high temperature.
- Do not use when the power cord or adapter is damaged, or when it fits loosely with the power socket.

The symbol on the right indicates that the body cannot be cleaned under the faucet.

Battery Removal

- Pry open the rear cover with a slotted screwdriver.
- Unscrew the body screw with a Phillips screwdriver.
- Unscrew the screws on the circuit board with a Phillips screwdriver and remove the circuit board.
- Cut the contact piece on the battery, remove the battery and dispose of it properly.

Note: Do not short-circuit the contact chip of battery.

WELCOME GUIDE

* For safety issue, the product remains low capacity during shipping. Please fully charge the product before initial use!

Please read this Guide carefully before using the product

Package Contents

Product Features

Specifications
Model: OPC-TR10
Rated voltage: 3.7V
Charging voltage: 5V
Rated power: 5W
Charging time: 1.5 hours

Steps for Using

In order to get the best shaving effect, please keep your hair clean and smooth before trimming.

Step 1
Turn on and turn off the shaving machine:
Press the switch button gently to turn on the machine, and press the switch button gently again to turn it off.

Step 2
Trim your hair:
1. Install T-type cutter head and choose T-type limit comb of appropriate height;
2. Hold the shaving machine by hands, so that the bottom of the limit comb always touches the scalp, moving slowly forward against the direction of hair growth, from front to behind;
3. The hair on the sideburns and the back of the head can also be trimmed and shaved repeatedly from down to up until it is cut to the right size. If too much hair accumulates on the tool bit during trimming, remove the tool bit and clean it with a hairbrush bit or rinse.

Step 3
Trim the beard / moustache line:
Gently apply the shaving machine blade to the skin and trim slowly from the edge of the beard / moustache until you trim the shape you want.

Travel Lock

- The shaving machine is equipped with a travel lock function to prevent it from accidentally starting in the luggage.
- Lock travel lock:** under power-off status, press the switch button for a long time, the smart LED indicator flashes for 3 times, then goes out, and enters the travel lock state.
- Release the travel lock:** when the travel lock is locked, press the switch button for a long time, the shaving machine will run after 3 seconds, and the smart LED indicator will turn on for a long time after the flow, and then exits the travel lock state.

Charge Your Hair Clipper

Step 1
Disassemble the tool bit:
Holding the shaving machine in hand, the other thumb drags the tool bit and gently pushes it toward the back of the body.

Step 2
Mount the tool bit:
Put the tool bit into the slot of the body card, press hard after alignment, until hear the sound of "click".

Step 3
Install limit comb:
According to the hairstyle trimmed, choose the appropriate length of the limit comb. Align the blade and buckle the limit comb into the T-head.

Step 4
Remove the limit comb:
Press and hold the tail of the comb and gently pull it outward to remove it.

Please turn off the shaving machine before disassembling the tool bit and press the switch button to open the travel lock.

In order to avoid falling and breaking the tool bit, please push with one hand and catch the tool bit with one hand when disassembling the tool bit.



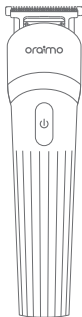
WELCOME GUIDE

* For safety issue, the product remains low capacity during shipping. Please fully charge the product before initial use!

Smart  Trimmer

Please read this Guide carefully before using the product

Package Contents



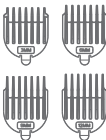
Trimmer x 1



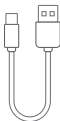
Lubricant Oil x 1



Hair Brush x 1

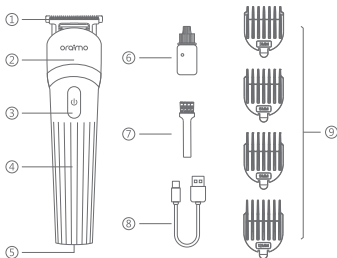


T-type Limit Comb x 4



Type-C Cable x 1

Product Features



- ① T-shaped tool head
- ② Body
- ③ Switch button
- ④ Smart LED indicator
- ⑤ Type-C interface
- ⑥ Lubricant oil
- ⑦ Hair brush
- ⑧ Type-C cable
- ⑨ 3-12mm T-type limit comb

Specifications

Model: OPC-TR10

Rated voltage: 3.7V

Charging voltage: 5V

Rated power: 5W

Charging time: 1.5 hours

Steps for Using

In order to get the best shaving effect, please keep your hair clean and smooth before trimming.

Step 1

Turn on and turn off the shaving machine:

Press the switch button gently to turn on the machine, and press the switch button gently again to turn it off.

Step 2

Trim your hair:

1. Install T-type cutter head and choose T-type limit comb of appropriate height;
2. Hold the shaving machine by hands, so that the bottom of the limit comb always touches the scalp, moving slowly forward against the direction of hair growth, from front to behind;
3. The hair on the sideburns and the back of the head can also be trimmed and shaved repeatedly from down to up until it is cut to the right size. If too much hair accumulates on the tool bit during trimming, remove the tool bit and clean it with a hairbrush bit or rinse.

Step 3

Trim the beard / moustache line:

Gently apply the shaving machine blade to the skin and trim slowly from the edge of the beard / moustache until you trim the shape you want.

Travel Lock

1. The shaving machine is equipped with a travel lock function to prevent it from accidentally starting in the luggage.
2. **Lock travel lock:** under power-off status, press the switch button for a long time, the smart LED indicator flashes for 3 times, then goes out, and enters the travel lock state.
3. **Release the travel lock:** when the travel lock is locked, press the switch button for a long time, the shaving machine will run after 3 seconds, and the smart LED indicator will turn on for a long time after the flow, and then exits the travel lock state.

Charge Your Hair Clipper

Step 1

Disassemble the tool bit:

Holding the shaving machine in hand, the other thumb drags the tool bit and gently pushes it toward the back of the body.

Step 2

Mount the tool bit:

Put the tool bit into the slot of the body card, press hard after alignment, until hear the sound of "click".

Step 3


Install limit comb:

According to the hairstyle trimmed, choose the appropriate length of the limit comb. Align the blade and buckle the limit comb into the T-head.

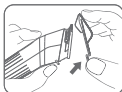
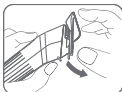
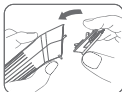
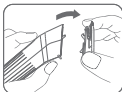
Step 4

Remove the limit comb:




Press and hold the tail of the comb and gently pull it outward to remove it.


 Please turn off the shaving machine before disassembling the tool bit and press the switch button to open the travel lock.

 In order to avoid falling and breaking the tool bit, please push with one hand and catch the tool bit with one hand when disassembling the tool bit.



Charge Your Shaving Machine

Hair Clipper Status Indicator		Status
	Steady red	Low battery
	Flow in red	Being charged
	Steady white	Fully charged

 When the power supply is insufficient and it cannot be turned on, it can be directly connected to the power cord. If it is not in use for a long time, please be fully charged at least once every half a year, and it can be used for about 90 minutes in the full power state.



Cleaning and Maintenance

Step 1

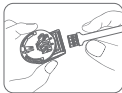
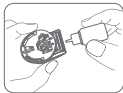
When starting to use this product, a little of lubricating oil should be added to the teeth of the tool bit.


Step 2

Turn off the power switch and remove the plug of the power adapter from the power outlet.

Step 3

Remove the limit comb, remove the tool bit, use the attached cleaning brush, and brush off the shavings in the slot part of the tool bit.



 **Warning:** this machine is non-waterproof, please do not rinse the body of the shaving machine with water.

Important Safety Instructions

When using this product, basic precautions should always be followed, including the following:

Danger:

1. This product and accessories are not toys, please put them out of the reach of children to avoid danger.
2. Do not plug or unplug the power cord with wet hands to prevent the power cord from touching the liquid.
3. Please make sure the body, adapter and power cord are dry and do not use it in the bathroom.
4. This product has a built-in rechargeable battery, do not throw it into the fire, or charge, use or place it at a high temperature.
5. Do not use when the power cord or adapter is damaged, or when it fits loosely with the power socket.

The symbol on the right indicates that the body cannot be cleaned under the faucet.



Warning: please keep the body of the shaving machine dry.

1. Please make sure that the power cord and products are kept dry and do not rinse the shaving machine with water.
2. Before connecting the product to charge, make sure that the voltage marked on the product matches the local power supply voltage.
3. If the power cord is damaged or lost, please purchase the original model from the manufacturer or after-sales maintenance department to replace it.
4. Please use and store the product at a temperature between 5°C and 35°C.
5. Do not use broken or damaged trimming combs.
6. Do not disassemble the body to replace the battery.
7. Do not knock or drop this product. If the product is damaged by collision or fall, please stop using it.
8. People with unsound limbs, mental disorders and lack of relevant experience and knowledge (including children) should use it under the supervision and guidance of their guardians.
9. Do not use it on small animals.

Battery Removal

1. Pry open the rear cover with a slotted screwdriver.
2. Unscrew the body screw with a Phillips screwdriver.
3. Unscrew the screws on the circuit board with a Phillips screwdriver and remove the circuit board.
4. Cut the contact piece on the battery, remove the battery and dispose of it properly.

Note: Do not short-circuit the contact chip of battery.



Pry open



Unscrew



Unscrew



Cut off