

 **PLASSON**<sup>®</sup>



# PLASSA

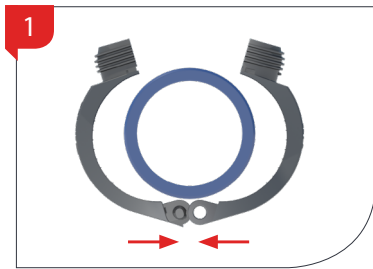
PLASSON Mechanical Saddle



# "PLASSADDLE" – PLASSON's revolutionary mechanical saddle

PLASSON is proud to introduce its newly designed mechanical saddle, featuring fast, bolt free installation as well as some of our well-established mechanical fitting features:

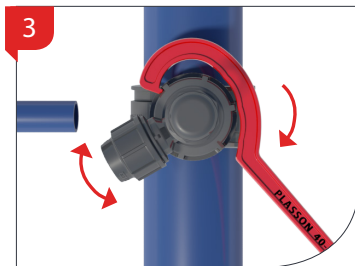
- Fast and Innovative tightening mechanism
- No bolts
- Non-corrosive, strong and durable plastic parts - no metal components



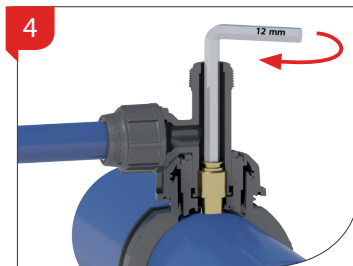
The two clamps of the saddle wrap around the pipe and snap together. The saddle is now retained on the pipe and the installer is free to keep working.



Saddle body is positioned in place and connected to the clamps by hand tightening of the retaining nut. No small parts (nuts, bolts) that may fall and disappear in the trench are involved.



Use PLASSON Line 7 spanner to rotate the nut another 1/2 turn and firmly secure the saddle in place. The outlet is then rotated and secured in the desired direction by tightening the grey nut.



Tapping of either live or unpressurised PE and PVC pipe mains is achieved by operating the integral cutter with a 12mm hex drive.

## The saddle is available in three versions

1. Female threaded offtake (ISO 7-1 "Rp" thread), in sizes 1/2", 3/4", 1", 1.1/4" and 1.1/2"
2. "Live" Tapper body with integral 25 or 32mm Series 7 compression ends for connection to PE service pipes.
3. "Live" Tapper with 3/4" male thread (ISO 7-1 "R" thread)

## Technical specifications

- Suitable for use on PE and PVC pipelines between 63 and 180mm
- PN 16 pressure rating
- Female "Rp", Male "R" ISO 7-1 threads
- Raw materials: PP + GF clamps, PPB body, EPDM seals, Brass Cutter