



Fittings & Accessories for PE Pipes

Price update July 2026

www.plasson.co.uk



PLASSON®

Here at PLASSON we continually strive to develop and expand our range of fittings reflecting our ongoing strategy to deliver innovative solutions in the market.



PLASSON have one of the widest ranges of pipe fittings in the world with sizes ranging from 16mm to 1200mm, pressure ratings 0 bar to 25 bar, accepting nearly all existing pipe ranges, metric and imperial including polyethylene, lead, copper and galvanised. PLASSON have a 50 year in the ground track record for its products. We pride ourselves not only on the quality of our fittings but also on our high standard of service, delivery and aftersales support.



Uniquely placed in the UK market to supply a full range of fittings and accessories for water & gas pipe, our dedicated sales and technical team will work with you to provide the foremost solutions for joining supply pipes.



Contents



Mechanical	4-19
Compression.....	4-9
Universal.....	10-11
Barrier fittings	12-13
Adaptors.....	14-15
Imperial & Irish std. fittings	16-17
Mechanical saddles & tappers	18-19
Pushfit	20-21
Valves	22-27
Stop taps.....	22-24
Ball valves	24
QCV & EF valves.....	25
Check valves	26
Bib taps	27
Meter Connection & Manifolds	28-33
Water meter connection - below ground	28
MCP Single meter connection - above ground	29
MCP System - for multi occupancy	30-33
Other	34-39
Plassgas reusable.....	34
Repair clamps	35
Threaded	36-37
Tools & accessories.....	38-39
Electrofusion	40-51
Fittings	40-44
Specialist EF Tooling & Saddles	45-51
Spigots	52-68
Long spigot fittings.....	52-60
Short spigot fittings	61-65
Seamless bends.....	66-68
Information	70-76
Fitting instructions.....	70-73
Technical details	74-75
Contact details	76

Mechanical



PLASSON mechanical fittings offer solutions for connecting PE pipes, used for conveying water and other fluids in urban and inter-urban infrastructure, industrial, mining, landscape, farming as well as optical fibre duct systems.

The fittings are designed to withstand working pressures of up to 16bar, and also include valves which allow the regulation of flow. These fittings are manufactured in diameters ranging from 16mm to 160mm.

7010 Coupler



Code	d	£ ea
PL070106016	16	6.22
PL070100020	20	7.74
PL070100025	25	8.28
PL070100032	32	19.47
PL070100040	40	41.28
PL070100050	50	43.00
PL070100063	63	62.82
PL870100075	75	106.72
PL870100090	90	123.08
PL870100110	110	214.54
PL070100125	125	461.94
PL0701061600A	160	560.00

7610 Repair Coupler



Code	d	£ ea
PL076100020	20	9.34
PL076100025	25	11.21
PL076100032	32	25.29
PL076100040	40	45.62
PL076100050	50	51.61
PL076100063	63	72.02
PL876100075	75	105.64
PL876100090	90	142.54
PL876100110	110	243.33
PL076100125	125	488.62

7110 Reducing Coupler



Code	d	£ ea
PL071100020016	20 x 16	14.16
PL071100025016	25 x 16	15.55
PL071100025020	25 x 20	15.55
PL071100032020	32 x 20	26.32
PL071100032025	32 x 25	26.32
PL071100040025	40 x 25	44.59
PL071100040032	40 x 32	44.59
PL071100050025	50 x 25	52.25
PL071100050032	50 x 32	59.71
PL071100050040	50 x 40	59.71
PL071100063025	63 x 25	63.76
PL071100063032	63 x 32	75.57
PL071100063040	63 x 40	75.57
PL071100063050	63 x 50	75.57
PL871100075050	75 x 50	99.25
PL871100075063	75 x 63	99.25
PL871100090063	90 x 63	131.89
PL871100090075	90 x 75	131.89
PL871100110090	110 x 90	226.83

7120 End Plug



Code	d	£ ea
PL071200020	20	9.52
PL071200025	25	12.24
PL071200032	32	17.79
PL071200040	40	27.72
PL071200050	50	36.98
PL071200063	63	61.98
PL871200075	75	80.43
PL871200090	90	109.19
PL871200110	110	130.01

7129 Plug Adaptor



Code	d	£ ea
PL071209020	20	3.85
PL071209025	25	4.20
PL071209032	32	4.40
PL071209040	40	5.42
PL071209050	50	8.75
PL071209063	63	9.52

7020 Male Adaptor

Metric x MI BSP



Code	d	£ ea
PL0702060160030A	16 x 3/8"	5.14
PL070206016005	16 x 1/2"	5.14
PL070206016007	16 x 3/4"	5.14
PL070200020005	20 x 1/2"	7.22
PL070200020007	20 x 3/4"	7.73
PL070200020010	20 x 1"	10.79
PL070200025005	25 x 1/2"	8.67
PL070200025007	25 x 3/4"	8.67
PL070200025010	25 x 1"	13.42
PL070200032007	32 x 3/4"	13.42
PL070200032010	32 x 1"	13.42
PL070200032013	32 x 1 1/4"	13.42
PL070200032015	32 x 1 1/2"	13.42
PL070200040010	40 x 1"	25.73
PL070200040013	40 x 1 1/4"	25.73
PL070200040015	40 x 1 1/2"	25.73
PL070200040020	40 x 2"	25.73
PL070200050010	50 x 1"	32.86
PL070200050013	50 x 1 1/4"	32.86
PL070200050015	50 x 1 1/2"	32.86
PL070200050020	50 x 2"	32.86
PL070200063013	63 x 1 1/4"	44.02
PL070200063015	63 x 1 1/2"	44.02
PL070200063020	63 x 2"	44.02
PL070200063025	63 x 2 1/2"	44.02
PL870200075020	75 x 2"	66.77
PL870200075025	75 x 2 1/2"	66.77
PL870200075030	75 x 3"	66.77
PL870200090020	90 x 2"	90.47
PL870200090025	90 x 2 1/2"	90.47
PL870200090030	90 x 3"	90.47
PL870200090040	90 x 4"	90.47
PL870200110020	110 x 2"	153.31
PL870200110030	110 x 3"	153.31
PL870200110040	110 x 4"	153.31

7030 Female Adaptor

Metric x FI BSP



Code	d	£ ea
PL070306016005	16 x 1/2"	6.19
PL070306016007	16 x 3/4"	6.19
PL070300020005	20 x 1/2"	8.67
PL070300020007	20 x 3/4"	8.67
PL070300020010	20 x 1"	8.67
PL070300025007	25 x 3/4"	9.49
PL070300025010	25 x 1"	9.49
PL070300032007	32 x 3/4"	12.78
PL070300032010	32 x 1"	12.78
PL070300032013	32 x 1 1/4"	12.78
PL070300040010	40 x 1"	29.66
PL070300040013	40 x 1 1/4"	29.66
PL070300040015	40 x 1 1/2"	29.66
PL070300050013	50 x 1 1/4"	40.41
PL070300050015	50 x 1 1/2"	40.41
PL070300050020	50 x 2"	40.41
PL070300063020	63 x 2"	50.79
PL870300075020	75 x 2"	68.24
PL870300075025	75 x 2 1/2"	68.24
PL870300090020	90 x 2"	93.37
PL870300090030	90 x 3"	93.37
PL870300090040	90 x 4"	93.37
PL870300110030	110 x 3"	196.08
PL870300110040	110 x 4"	196.08

7060 Female Adaptor

Parallel Thread



Code	d	£ ea
PL0703G0025007	25 x 3/4"	12.80
PL0703G0025010	25 x 1"	12.80
PL0703G0032010	32 x 1"	17.06



7040 90° Tee



Code	d	£ ea
PL070406016	16	10.83
PL070400020	20	13.57
PL070400025	25	21.24
PL070400032	32	28.56
PL070400040	40	55.38
PL070400050	50	61.52
PL070400063	63	92.09
PL870400075	75	165.42
PL870400090	90	233.52
PL870400110	110	474.32
PL0704061600A	160	1008.56

7045 90° Repair Tee



Code	d	£ ea
PL0704P0020	20	17.20
PL0704P0025	25	24.21
PL0704P0032	32	33.01
PL0704P0040	40	67.72
PL0704P0050	50	75.84
PL0704P0063	63	107.27

7340 90° Reducing Tee



Code	d	£ ea
PL073400020016	20 x 16 x 20	17.71
PL073400025020	25 x 20 x 25	25.78
PL073400032025	32 x 25 x 32	37.68
PL073400040025	40 x 25 x 40	59.04
PL073400040032	40 x 32 x 40	61.98
PL073400050025	50 x 25 x 50	89.97
PL073400050032	50 x 32 x 50	89.97
PL073400050040	50 x 40 x 50	89.97
PL073400063032	63 x 32 x 63	108.48
PL073400063040	63 x 40 x 63	108.48
PL073400063050	63 x 50 x 63	108.48

7740 90° Enlarging Tee



Code	d	£ ea
PL077400025032	25 x 32 x 25	42.01

7140 90° Slip Tee

Female Offtake



Code	d	£ ea
PL0714P0050015	50 x 1 1/2" x 50	69.73
PL0714P0063013	63 x 1 1/4" x 63	93.04



7840 90° Tee

Male Offtake



Code	d	£ ea
PL078400020005	20 x 1/2" x 20	11.74
PL078400020007	20 x 3/4" x 20	11.74
PL078400025005	25 x 1/2" x 25	19.04
PL078400025007	25 x 3/4" x 25	19.04
PL078400032010	32 x 1" x 32	27.03
PL078400040013	40 x 1 1/4" x 40	39.94
PL078400040015	40 x 1 1/2" x 40	39.94
PL078400050013	50 x 1 1/4" x 50	56.45
PL078400050015	50 x 1 1/2" x 50	56.45
PL078400063013	63 x 1 1/4" x 63	76.43
PL078400063015	63 x 1 1/2" x 63	76.43
PL078400063020	63 x 2" x 63	76.43

7140 90° Tee

Female Offtake



Code	d	£ ea
PL071400020005	20 x 1/2" x 20	12.49
PL071450020016	20 x 3/4" x 16	12.49
PL071400020007	20 x 3/4" x 20	12.49
PL071400025005	25 x 1/2" x 25	20.60
PL071450025020	25 x 3/4" x 20	20.60
PL071400025007	25 x 3/4" x 25	20.60
PL071400025010	25 x 1" x 25	20.60
PL071400025013	25 x 1 1/4" x 25	20.60
PL071400032007	32 x 3/4" x 32	27.03
PL071450032025	32 x 1" x 25	27.03
PL071400032010	32 x 1" x 32	27.03
PL071400032013	32 x 1 1/4" x 32	27.03
PL071400032015	32 x 1 1/2" x 32	27.03
PL071400040010	40 x 1" x 40	43.83
PL071400040013	40 x 1 1/4" x 40	47.38
PL071400040015	40 x 1 1/2" x 40	47.38
PL071400040020	40 x 2" x 40	47.38
PL071400050015	50 x 1 1/2" x 50	57.18
PL071400050020	50 x 2" x 50	57.18
PL071400063013	63 x 1 1/4" x 63	80.21
PL071400063015	63 x 1 1/2" x 63	80.21
PL071400063020	63 x 2" x 63	80.21
PL871400075020	75 x 2" x 75	150.77
PL871400075025	75 x 2 1/2" x 75	150.77
PL871400075030	75 x 3" x 75	150.77
PL871400090030	90 x 3" x 90	180.01
PL871400110040	110 x 4" x 110	327.72

7050 90° Elbow



Code	d	£ ea
PL070506016	16	6.94
PL070500020	20	9.58
PL070500025	25	14.11
PL070500032	32	23.18
PL070500040	40	45.99
PL070500050	50	49.15
PL070500063	63	65.22
PL870500075	75	185.82
PL870500090	90	237.44
PL870500110	110	389.20
PL0705061600A	160	672.00

7510 90° Reducing Elbow



Code	d	£ ea
PL075100025020	25 x 20	16.28

7460 45° Elbow



Code	d	£ ea
PL070600032	32	27.17
PL070600040	40	45.99
PL070600050	50	49.15
PL070600063	63	65.22
PL870600090	90	283.25
PL870600110	110	435.40

7750 Wall Plate Elbow PP

New size



Code	d	£ ea
PL077500020005	20 x 1/2"	19.40
PL077500025005	25 x 1/2"	25.86
PL077500025007	25 x 3/4"	25.86

9055 Wall Plate Elbow DZR



Code	d	£ ea
PV9055005	20 x 1/2"	42.15
PV9055007	25 x 3/4"	52.86

7450 45° Elbow

Male Offtake



Code	d	£ ea
PL074500020005	20 x 1/2"	6.40
PL074500020007	20 x 3/4"	6.40

7150 90° Elbow

Female Offtake



Code	d	£ ea
PL071506016005	16 x 1/2"	7.20
PL071500020005	20 x 1/2"	9.50
PL071500020007	20 x 3/4"	9.50
PL071500025005	25 x 1/2"	12.49
PL071500025007	25 x 3/4"	12.49
PL071500025010	25 x 1"	12.49
PL071500032007	32 x 3/4"	20.12
PL071500032010	32 x 1"	20.12
PL071500032013	32 x 1 1/4"	20.12
PL071500040010	40 x 1"	40.51
PL071500040013	40 x 1 1/4"	40.51
PL071500040015	40 x 1 1/2"	40.51
PL071500040020	40 x 2"	40.51
PL071500050010	50 x 1"	45.35
PL071500050013	50 x 1 1/4"	45.35
PL071500050015	50 x 1 1/2"	45.35
PL071500050020	50 x 2"	45.35
PL071500063013	63 x 1 1/4"	56.92
PL071500063015	63 x 1 1/2"	56.92
PL071500063020	63 x 2"	56.92
PL871500075020	75 x 2"	108.52

7850 90° Elbow

Male Offtake



Code	d	£ ea
PL078500020005	20 x 1/2"	6.96
PL078500020007	20 x 3/4"	6.96
PL078500025005	25 x 1/2"	8.13
PL078500025007	25 x 3/4"	8.13
PL078500025010	25 x 1"	8.13
PL078500032010	32 x 1"	13.72
PL078500040010	40 x 1"	23.33
PL078500040013	40 x 1 1/4"	23.33
PL078500040015	40 x 1 1/2"	23.33
PL078500050010	50 x 1"	32.08
PL078500050013	50 x 1 1/4"	32.08
PL078500050015	50 x 1 1/2"	32.08
PL078500063013	63 x 1 1/4"	39.40
PL078500063015	63 x 1 1/2"	39.40
PL078500063020	63 x 2"	39.40
PL878500090030	90 x 3"	114.32
PL878500110040	110 x 4"	146.81

Modular & threaded adaptors and modular tee



7250 Threaded Adaptor

Convert std fitting to MI BSP



Code	d	£ ea
PL072500025005	25 x 1/2"	12.58
PL072500025007	25 x 3/4"	12.58
PL072500032005	32 x 1/2"	13.42
PL072500032007	32 x 3/4"	13.42
PL072500032010	32 x 1"	13.42
PL072500040015	40 x 1 1/2"	16.40
PL072500050010	50 x 1"	23.83
PL072500050013	50 x 1 1/4"	23.83
PL072500050015	50 x 1 1/2"	23.83
PL072500050020	50 x 2"	23.83
PL072500063010	63 x 1"	34.64
PL072500063015	63 x 1 1/2"	34.64
PL072500063020	63 x 2"	34.64



7940 Modular Adaptor

For close/tight assemblies



Code	d	£ ea
PL079400020	20	10.58
PL079400025	25	11.59
PL079400032	32	20.98
PL079400040	40	29.67
PL079400050	50	46.70
PL079400063	63	67.87



7956 Modular Tee

Male Offtake for building manifolds



Code	d	£ ea
PL0784L0032010	32 x 1" x 32	77.44
PL0784L0040013	40 x 1 1/4" x 40	103.59
PL0784L0040015	40 x 1 1/2" x 40	103.59
PL0784L0050013	50 x 1 1/4" x 50	145.16
PL0784L0050015	50 x 1 1/2" x 50	145.16
PL0784L0050020	50 x 2" x 50	145.16
PL0784L0063013	63 x 1 1/4" x 63	202.60



7810 Coupler with Riser



Code	d	£ ea
PL078100050007	50 x 3/4" x 50	41.88
PL078100050010	50 x 1" x 50	41.88
PL078100063010	63 x 1" x 63	68.10
PL878100075007	75 x 3/4" x 75	95.38

7640 45° Tee



Code	d	£ ea
PL076400063	63	107.27
PL876400090	90	344.97
PL876400110	110	548.16

7550 Y-Fitting



Code	d	£ ea
PL075500020007	20 x 20 x 3/4"	13.85
PL075500025007	25 x 25 x 3/4"	20.72

7350 90° Spigot Elbow



Code	d	£ ea
PL073500050040	50 x 40	37.87
PL073500050050	50 x 50	36.43
PL073500063050	63 x 50	46.74

7540 Cross Threaded

Female Offtake



Code	d	£ ea
PL075400020007	20 x 3/4"	20.72

7220 Mechanical Flange Adaptor



Code	d	£ ea
PL072200050015	50 x 1 1/2"	82.50
PL072200050020	50 x 2"	82.50
PL072200063020	63 x 2"	127.51
PL872200075025	75 x 2 1/2"	148.78
PL872200090030	90 x 3"	175.13
PL872200090040	90 x 4"	175.13
PL872200110040	110 x 4"	218.93
PL072200125050	125 x 5"	335.71
PL072200125060	125 x 6"	335.71
PL0722061600500A	160 x 5"	554.40
PL0722061600600A	160 x 6"	554.40

7236 Spigot Flange Adaptor



Code	d	£ ea
PL0723060500150A	50 x 1 1/2"	65.22
PL0723060500200A	50 x 2"	65.22
PL0723060630200A	63 x 2"	77.37
PL0723060630250A	63 x 2 1/2"	77.37
PL872306075020	75 x 2"	91.99
PL872306075025	75 x 2 1/2"	91.99
PL872306075030	75 x 3"	91.99
PL872306090025	90 x 2 1/2"	116.76
PL872306090030	90 x 3"	116.76
PL872306090040	90 x 4"	116.76
PL872306110030	110 x 3"	175.13
PL872306110040	110 x 4"	175.13
PL872306110050	110 x 5"	197.50
PL0723061600500A	160 x 5"	326.00
PL0723061600600A	160 x 6"	326.00

7228 EPDM Flange Gasket



Code	d	£ ea
PL07228050015	50 x 1 1/2"	2.84
PL07228063020	63 x 2"	3.95
PL07228075025	75 x 2 1/2"	5.16
PL07228090030	90 x 3"	6.23
PL07228110040	110 x 4"	8.02
PL07228140050	140 x 5"	9.09
PL07228160060	160/180 x 6"	12.30
PL07228200080	200/225 x 8"	45.96
PL07228250100	250/280 x 10"	47.87
PL07228315120	315 x 12"	60.05



Universal Couplers

Universal x Universal

Connect or repair multiple pipe types with one fitting. Can repair large holes and bridge gaps. For connecting or repairing metric and imperial PE, steel, copper, lead, PEX, PB, PVC-U, ABS & PP-R between 14mm and 64mm.

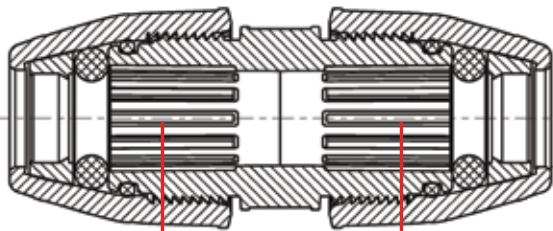
**SLIDE
N'SEAL**

1761 Universal Slip Coupler

Universal x Universal

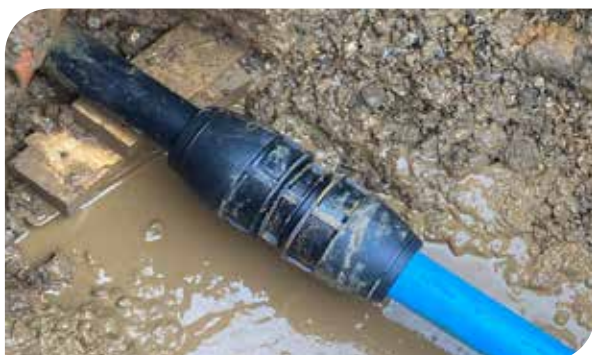


Code	d	£ ea
PL176100014018	14-18 x 14-18	53.68
PL176100019022	19-22 x 19-22	61.35
PL176100024028	24-28 x 24-28	69.63
PL176100031035	31-35 x 31-35	85.01
PL176100040043	40-43 x 40-43	104.53
PL176100048051	48-51 x 48-51	126.59
PL176100060064	60-64 x 60-64	164.25



Maximum repair length gap (Mrl)

d (popular pipes)	Mrl	L
14-18 (15mm, 3/8")	80mm	180
19-22 (20mm, 1/2")	80mm	180
24-28 (25mm, 3/4")	90mm	200
31-35 (32mm, 1")	100mm	210
40-43 (40mm, 1 1/4")	110mm	250
48-51 (50mm, 1 1/2")	120mm	270
60-64 (63mm, 2")	130mm	310



PE x Universal

The PLASSON 10017 Universal Coupler and the Plass4 77017 Coupler/77057 Plass4 Elbow connects metric PE to other pipe materials such as imperial polyethylene, copper, lead, PVC, poly-york and galvanised iron pipes.

10017 Universal Coupler

PE x Universal



Code	d	£ ea
PP10017U025018	25 x 14-18	28.43
PP10017U025022	25 x 19-22	28.43
PP10017U025028	25 x 24-28	28.43
PP10017U025035	25 x 31-35	38.95



PLASS4

77017 Plass4 Coupler

PE x Universal



Code	d	£ ea
PL07017U025022	25 x 15-22	28.45
PL07017U025027	25 x 20-27	30.42
PL07017U025035	25 x 27-35	40.11
PL07017U032027	32 x 20-27	40.11
PL07017U032035	32 x 27-35	47.00
PL07017U050050	50 x 35-50	86.82

77057 Plass4 Elbow

PE x Universal



Code	d	£ ea
PL07057U025022	25 x 15-22	29.23
PL07057U025027	25 x 20-27	31.75
PL07057U025035	25 x 27-35	51.05

Copper/PB/PEX x Universal

The PLASSON 10017C allows pushfit connection of 22mm copper, PEX or PB with the universal end fitting all pipes between 14mm and 28mm.

10017C Universal Coupler

22mm Cu/PB/PEX x Universal



Code	d	£ ea
PP10017C022018	22 x 14-18	33.89
PP10017C022022	22 x 19-22	33.89
PP10017C022028	22 x 24-28	33.89

PE x Copper/PB/PEX

1001C Coupler

PE to Cu/PB/PEX



Code	d	£ ea
PP1001CU020015	20 x 15	14.80
PP1001CU025015	25 x 15	15.41
PP1001CU025022	25 x 22	15.80
PP1001CU032028	32 x 28	29.56

Copper/PB/PEX x Threaded

1002C Male Adaptor

Cu/ PB/PEX



Code	d	£ ea
PP1002CU7015007	15 x 3/4"	12.87
PP1002CU7022007	22 x 3/4"	13.54
PP1002CU7028010	28 x 1"	21.69

1003C Female Adaptor

Cu/ PB/PEX



Code	d	£ ea
PP1003CU7015007	15 x 3/4"	17.11
PP1003CU7022007	22 x 3/4"	17.75

When using PB/ PEX pipes, use pipe manufacturers liner.

Imperial x Metric

7418 Coupler

Metric to Imperial



Code	d	£ ea
PL0701M0020005	1/2" x 20	8.43
PL0701M0020003	3/8" x 20	12.57
PL0711M0025005	1/2" x 25	9.71
PL0711M0025003	3/8" x 25	16.76
PL0701M0025007	3/4" x 25	9.63
PL0701M0032010	1" x 32	20.60
PL0711M0032013	1 1/4" x 32	42.20
PL0711M0050013	1 1/4" x 50	54.28
PL0701M0050015	1 1/2" x 50	54.28
PL0711M0063015	1 1/2" x 63	69.16
PL0701M0063020	2" x 63	75.91

7478 90° Elbow

Metric to Imperial



Code	d	£ ea
PL0705M0020005	1/2" x 20	11.35
PL0751M0025005	1/2" x 25	19.44
PL0705M0025007	3/4" x 25	16.36
PL0705M0032010	1" x 32	27.25

1001M Coupler

Metric to Imperial pushfit



Code	d	£ ea
PP1001M6020005	20 x 1/2"	10.33
PP1001M6025005	25 x 1/2"	10.86
PP1001M6025007	25 x 3/4"	11.59
PP1001M6032010	32 x 1"	23.59



PLASSON® Barrier

The UK's only range of fittings with approval on multiple manufacturers barrier pipes, 25, 32 and 63mm.

Barrier pipe is a reinforced PE pipe used to protect water supplies where laid in what is commonly known as contaminated ground. It is easily identified by the brown stripe on the blue pipe. Although barrier pipe is defined as 25, 32 and 63mm, the OD of the pipe is actually larger, for example, 25mm barrier pipe OD may be between 26.2mm and 27.8mm.

Nom size (mm)	Mean OD (mm)	
	Min	Max
25	26.2	27.78
32	33.3	34.78
63	64.3	67.75

The PLASSON Barrier fitting has been specifically designed to accommodate all sizes between the tolerances stated in BS8588, the British Standard for water pipes in contaminated ground.

Ensuring no contact between the protective aluminium layer in the barrier pipe and the drinking water, you can have confidence that the PLASSON Barrier fitting will provide a completely secure method to maintain the full system protection barrier pipe installations require.

PLASSON Barrier Fittings have UK Water Reg4 approval, conform to BS6920 and independent test certification for permeation testing in accordance with BS8588 on all the leading brands of barrier pipe.

- GPS - Protectaline
- egeplast - SLA
- Radius - Puriton
- Polypipe - Polyguard



Male Adaptor Barrier



Code	size (mm)	£ ea
PB270200025007	25 x 3/4"	8.41
PB270200032007	32 x 3/4"	11.67
PB270200032010	32 x 1"	12.42
PB270200063015	63 x 1 1/2"	38.06
PB270200063020	63 x 2"	38.06

Coupler Barrier



Code	size (mm)	£ ea
PB270100025	25 x 25	12.30
PB270100032	32 x 32	17.44
PB270100063	63 x 63	59.48

Female Adaptor Barrier



Code	size (mm)	£ ea
PB270300025007	25 x 3/4"	10.04
PB270300025010	25 x 1"	10.04
PB270300032007	32 x 3/4"	13.55
PB270300032010	32 x 1"	13.55
PB270300063015	63 x 1 1/2"	46.21
PB270300063020	63 x 2"	46.21

Coupler Barrier x Metric PE



Code	size (mm)	£ ea
PB2701S0025	25 x 25	9.33
PB2701S0032	32 x 32	16.95
PB2701S0063	63 x 63	53.05

Coupler Barrier x Copper



Code	size (mm)	£ ea
PB2701C0025022	25 x 22	19.56
PB2701C0032028	32 x 28	25.52
PB2701C0063054	63 x 54	68.90



Reducing Coupler Barrier



Code	size (mm)	£ ea
PB271100032025	32 x 25	20.64
PB271100063025	63 x 25	63.37
PB271100063032	63 x 32	63.37

End Plug Barrier



Code	size (mm)	£ ea
PB271200025	25	8.15
PB271200032	32	12.61
PB271200063	63	38.45

90° Elbow Barrier



Code	size (mm)	£ ea
PB270500025	25 x 25	10.58
PB270500032	32 x 32	19.38
PB270500063	63 x 63	60.74

90° Tee Barrier



Code	size (mm)	£ ea
PB270400025	25 x 25 x 25	20.97
PB270400032	32 x 32 x 32	25.77
PB270400063	63 x 63 x 63	90.15

45° Elbow Barrier



Code	size (mm)	£ ea
PB270600063	63 x 63	61.66

Reducing Tee Barrier



Code	size (mm)	£ ea
PB273400032025	32 x 25 x 32	33.59
PB273400063032	63 x 32 x 63	104.06

90° Elbow Female Adaptor Barrier



Code	size (mm)	£ ea
PB271500025007	25 x 3/4"	12.15
PB271500032010	32 x 1"	18.46
PB271500063020	63 x 2"	58.37

Adaptor Kit Barrier



Code	size (mm)	£ ea
PB277800025	25	3.75
PB277800032	32	5.91
PB277800063	63	12.29

The adaptor kit converts any standard PLASSON metric fitting to accept barrier pipe. Simply discard the original grey nut and white grip ring, replace with the brown nut, barbed adaptor and the grip ring from the kit, assemble as shown in the instructions below.

For PLASSON Barrier Fitting Instructions please see page 70.



Connecting to Copper pipe (above & below ground)

7438 Copper Adaptor

Table X & Y



Code	d	£ ea
PL07438015	20 x 15	7.62
PL07438016	25 x 15	9.84
PL07438022	25 x 22	9.34
PL07438028	32 x 28	13.97
PL07438035	40 x 35	17.20
PL07438042	50 x 42	23.54
PL07438054	63 x 54	26.32

Connecting to Lead

7782 Lead Adaptor



Code	Nearest Equivalent Imperial Size (IN x LB/YD)	Fitting Size	Bore (mm)	Wall Thickness (mm)	£ ea
PL077802025003	3/8" x 5lb	25	10	5.0	4.28
PL077802025005	1/2" x 7lb	25	12	5.6	3.53
PL077802032005	1/2" x 9lb	32	12	6.7	5.10
PL077802032007	3/4" x 9lb	32	20	5.3	4.29
PL077802040007	3/4" x 11lb	40	20	6.4	8.37
PL077802050010	1" x 16lb	50	25	8.0	10.34

Connecting to Galv

7896 Universal Adaptor

For Galvanised & PVC

No end load restraint. Anchoring of pipe and fitting required.



Code	d	£ ea
PL07896015P	20 x 15	5.14
PL07896022P	25 x 22 / 1/2"	6.06
PL07896028P	32 x 28 / 3/4"	6.65
PL07896035P	40 x 35 / 1"	22.19
PL07896042P	50 x 42 / 1 1/4"	24.02

Connecting to Steel

7898 Adaptor

For Steel Pipe

No end load restraint. Anchoring of pipe and fitting required.



Code	d	£ ea
PL078980815	50 x 1 1/2"	35.60
PL078980820	63 x 2"	39.22

7970 Metric PVC Adaptor



Code	d	£ ea
PL07970020P	20	3.49
PL07970025P	25	3.89
PL07970032P	32	4.28
PL07970040P	40	5.45
PL07970050P	50	8.21
PL07970063P	63	9.35

7930 Reducing Set



Code	d	£ ea
PL079300025020	25 x 20	5.58
PL079300032020	32 x 20	8.13
PL079300032025	32 x 25	8.13
PL079300040032	40 x 32	11.35
PL079300050025	50 x 25	16.60
PL079300050032	50 x 32	16.12
PL079300050040	50 x 40	17.25
PL079300063025	63 x 25	24.12
PL079300063032	63 x 32	24.12
PL079300063050	63 x 50	24.12
PL879300075063	75 x 63	60.21
PL079300110063	110 x 63	97.74
PL879300110075	110 x 75	92.39
PL879300110090	110 x 90	78.14

7785 Damaged Metric Pipe Adaptor



Code	d	£ ea
PL077805020	20	1.47
PL077805025	25	1.80
PL077805032	32	2.14
PL07005S063P	63	2.79

7950 Pipe Liner



Code	d	£ ea
PL079500020	20	0.65
PL079500025	25	0.66
PL079500032	32	1.10
PL079500040	40	1.90
PL079500050	50	2.13
PL079500063	63	2.54

Adaptors to convert Metric Fittings to Imperial pipe

7786 Class C Low Density

BS1972/67



Code	Nominal Size	Fitting Size	£ ea
PL077806003	3/8"	20	2.27
PL077806005	1/2"	20	1.90
PL077806007	3/4"	25	2.27
PL077806010	1"	32	2.65
PL077806013	1 1/4"	50	6.47
PL077806015	1 1/2"	50	6.47
PL077806020	2"	63	9.70

7787 Class D Low Density

BS1972/67



Code	Nominal Size	Fitting Size	£ ea
PL077807005	1/2"	20	1.90
PL077807007	3/4"	25	2.27
PL077807010	1"	32	2.65
PL077807013	1 1/4"	50	6.47
PL077807015	1 1/2"	50	6.47

7788 Class C High Density

BS3284/67



Code	Nominal Size	Fitting Size	£ ea
PL077808005	1/2"	20	1.90
PL077808007	3/4"	25	2.27
PL077808010	1"	32	2.65
PL077808013	1 1/4"	50	6.47
PL077808015	1 1/2"	50	6.47
PL077808020	2"	63	9.70

7789 Class D High Density

BS3284/67



Code	Nominal Size	Fitting Size	£ ea
PL077809003	3/8"	20	2.27
PL077809005	1/2"	20	1.90
PL077809007	3/4"	25	2.27
PL077809010	1"	32	2.65
PL077809013	1 1/4"	50	6.47
PL077809015	1 1/2"	50	6.47
PL077809020	2"	63	9.70

7995 Normal Gauge

IS 134:1977



Code	Nominal Size	Fitting Size	£ ea
PL079905005	1/2"	20	1.44
PL079905007	3/4"	25	1.72
PL079905010	1"	32	2.03
PL079905013	1 1/4"	50	4.69
PL079905015	1 1/2"	50	5.95
PL079905020	2"	63	9.32

7996 Heavy Gauge

IS 134:1977



Code	Nominal Size	Fitting Size	£ ea
PL079906005	1/2"	20	1.53
PL079906007	3/4"	25	1.72
PL079906010	1"	32	2.16
PL079906013	1 1/4"	50	4.69
PL079906015	1 1/2"	50	5.95

For fitting instructions see page 67.

Pipe Sizes of Imperial Polyethylene (Alkathene)



Class	OD (mm)	3/8"	1/2"	3/4"	1"	1 1/4"	1 1/2"	2"
Class C Low Density	Min Max OD	17.00 - 17.30	21.20 - 21.50	26.60 - 26.90	33.40 - 33.70	42.10 - 42.50	48.10 - 48.50	60.10 - 60.60
	Wall Thickness	2.20 - 2.50	2.70 - 3.00	3.40 - 3.70	4.20 - 4.60	5.30 - 5.80	6.10 - 6.70	7.60 - 8.40
Class D Low Density	Min Max OD		21.20 - 21.50	26.60 - 26.90	33.40 - 33.70	42.10 - 42.50	48.10 - 48.50	
	Wall Thickness		3.40 - 3.70	4.30 - 4.70	5.40 - 5.90	6.80 - 7.50	7.80 - 8.60	
Class C High Density	Min Max OD		21.20 - 21.50	26.60 - 26.90	33.40 - 33.70	42.10 - 42.50	48.10 - 48.50	60.10 - 60.60
	Wall Thickness		1.80 - 2.00	2.30 - 2.60	2.80 - 3.10	3.60 - 4.00	4.10 - 4.50	5.10 - 5.60
Class D High Density	Min Max OD	17.00 - 17.30	21.20 - 21.50	26.60 - 26.90	33.40 - 33.70	42.10 - 42.50	48.10 - 48.50	60.10 - 60.60
	Wall Thickness	1.90 - 2.10	2.30 - 2.60	2.90 - 3.20	3.70 - 4.10	4.60 - 5.10	5.30 - 5.80	6.60 - 7.30
Normal Gauge	Min Max OD		16.95 - 17.30	24.95 - 25.40	31.25 - 31.75	37.50 - 38.10	43.80 - 44.45	60.00 - 60.85
	Wall Thickness		2.30 - 2.60	3.10 - 3.50	3.10 - 3.50	3.10 - 3.50	3.50 - 3.90	4.56 - 5.20
Heavy Gauge	Min Max OD		20.70 - 21.10	27.05 - 27.45	33.85 - 34.10	42.00 - 42.65	47.95 - 48.65	
	Wall Thickness		4.30 - 4.85	4.30 - 4.85	4.30 - 4.85	5.05 - 5.60	5.35 - 5.90	

Imperial x Imperial

Fittings for Imperial Polyethylene pipes to BS1972 and 3284, Classes C and D, no liners are required for these Imperial PE joints.

7404 Coupler

Imperial



Code	d	£ ea
PL0701M0005	1/2" x 1/2"	8.93
PL0701M0007	3/4" x 3/4"	9.52
PL0701M0010	1" x 1"	22.37
PL0701M0015	1 1/2" x 1 1/2"	49.43
PL0701M0020	2" x 2"	72.25

7388 Female Adaptor

Imperial



Code	d	£ ea
PL0703M0005005	1/2" x 1/2"	9.98
PL0703M0007007	3/4" x 3/4"	10.92
PL0703M0010010	1" x 1"	14.67
PL0703M0015015	1 1/2" x 1 1/2"	46.45
PL0703M0020020	2" x 2"	58.46

7428 Male Adaptor

Imperial



Code	d	£ ea
PL0702M0005005	1/2" x 1/2"	8.32
PL0702M0007007	3/4" x 3/4"	9.98
PL0702M0010010	1" x 1"	15.44
PL0702M0015015	1 1/2" x 1 1/2"	37.77
PL0702M0020020	2" x 2"	50.60

Irish Standard (IS134) Normal Gauge (red grip ring) Heavy Gauge (blue grip ring)

7518 Coupler Normal x Metric



Code	d	£ ea
PL0711N0025005	1/2" x 25	11.74

7578 90° Elbow Normal x Metric



Code	d	£ ea
PL0705N0020005	1/2" x 20	9.32
PL0705N0025005	1/2" x 25	17.02

7618 Coupler Heavy x Metric



Code	d	£ ea
PL0701H0020005	1/2" x 20	7.69
PL0711H0025005	1/2" x 25	11.74
PL0701H0025007	3/4" x 25	8.88

7678 90° Elbow Heavy x Metric



Code	d	£ ea
PL0751H0025005	1/2" x 25	17.02

7508 Coupler Normal x Heavy



Code	d	£ ea
PL0701Y0005005	1/2" x 1/2"	9.13

Irish Copper Adaptor

For connection to Irish copper, use the 7438 adaptor in a metric PLASSON mechanical fitting.

7438 Copper Adaptor

table X & Y



Code	d	£ ea
PL07438014	25 x 1/2" IRS	9.84
PL07438021	25 x 3/4" IRS	9.34
PL07438028	32 x 1" IRS	13.97

Irish Standard (IS134) Heavy Gauge (blue grip ring)

7601 Coupler



Code HG	d	£ ea
PL0701H0005	1/2"	9.13
PL0701H0007	3/4"	10.28
PL0701H0010	1"	20.19

7628 Male Adaptor



Code HG	d	£ ea
PL0702H0005005	1/2" x 1/2" MI	7.19

7604 90° Tee



Code HG	d	£ ea
PL0704H0005	1/2" x 1/2" x 1/2"	14.63
PL0704H0007	3/4" x 3/4" x 3/4"	20.60

7605 90° Elbow



Code HG	d	£ ea
PL0705H0005	1/2" x 1/2"	11.28
PL0705H0007	3/4" x 3/4"	14.93

7679 90° Female Elbow



Code HG	d	£ ea
PL0715H0005005	1/2" x 1/2"	9.46

7606 Wall Plate Elbow



Code HG	d	£ ea
PL0775H0005005	1/2" x 1/2"	17.15

7609 Stop Tap



Code HG	d	£ ea
PL0340H0005	1/2" x 1/2"	52.57
PL0340H0007	3/4" x 3/4"	74.54

Normal Gauge (red grip ring)

7501 Coupler



Code NG	d	£ ea
PL0701N0005	1/2"	9.13
PL0701N0007	3/4"	10.28
PL0701N0010	1"	20.19

7504 Tee



Code NG	d	£ ea
PL0704N0005	1/2" x 1/2" x 1/2"	14.63
PL0704N0007	3/4" x 3/4" x 3/4"	20.60

7505 90° Elbow



Code NG	d	£ ea
PL0705N0005	1/2" x 1/2"	11.28
PL0705N0007	3/4" x 3/4"	14.93

7579 Female Elbow



Code NG	d	£ ea
PL0715N0005005	1/2" x 1/2"	9.46

7506 Wall Plate Elbow



Code NG	d	£ ea
PL0775N0005005	1/2" x 1/2"	17.15

7509 Stop Tap



Code NG	d	£ ea
PL0340N0005	1/2" x 1/2"	52.57
PL0340N0007	3/4" x 3/4"	74.54

PlasSaddle



PLASSON's Revolutionary Mechanical Saddle

PLASSON is proud to introduce its newly designed mechanical saddle, featuring fast, bolt free installation as well as some of our well-established mechanical fitting features:

- Fast and Innovative tightening mechanism
- No bolts
- Non-corrosive, strong and durable plastic parts
- Integral seals - no need for thread sealants

Technical specifications

- Suitable for use on PE and PVC pipelines between 63 and 180mm
- PN 16 pressure rating
- Female "Rp", Male "R" ISO 7-1 threads
- Raw materials: PP + GF clamps, PPB body, EPDM seals, Brass Cutter



16310 PlasSaddle Tapper



Code	d	£ ea
PL163100063025	63 x 25	125.65
PL163100063032	63 x 32	125.65
PL163100090025	90 x 25	143.09
PL163100090032	90 x 32	143.09
PL163100110025	110 x 25	161.06
PL163100110032	110 x 32	161.06
PL163100125025	125 x 25	179.70
PL163100125032	125 x 32	179.70
PL163100160025	160 x 25	199.66
PL163100160032	160 x 32	199.66
PL163100180025	180 x 25	239.61
PL163100180032	180 x 32	239.61
PL163100200025	200 x 25	281.60
PL163100200032	200 x 32	281.60

New size



1631R PlasSaddle Tapper Male

BSPT Outlet



Code	d	£ ea
PL1631R0063010	63 x 1"	122.46
PL1631R0090010	90 x 1"	140.43
PL1631R0110010	110 x 1"	143.75
PL1631R0125010	125 x 1"	177.04
PL1631R0160010	160 x 1"	189.68
PL1631R0180010	180 x 1"	232.96



PlasSaddle Threaded

163000 PlasSaddle Threaded

ISO - 7/1 for PE80, PE100, & metric PVC



Code	d	£ ea
PL163000063005	63 x 1/2"	24.26
PL163000063007	63 x 3/4"	24.26
PL163000063010	63 x 1"	24.26
PL163000063013	63 x 1 1/4"	24.26
PL163000063015	63 x 1 1/2"	24.26
PL163000090005	90 x 1/2"	39.04
PL163000090007	90 x 3/4"	39.04
PL163000090010	90 x 1"	42.20
PL163000090013	90 x 1 1/4"	39.04
PL163000090015	90 x 1 1/2"	42.20
PL163000110005	110 x 1/2"	48.99
PL163000110007	110 x 3/4"	48.99
PL163000110010	110 x 1"	48.99
PL163000110013	110 x 1 1/4"	48.99
PL163000110015	110 x 1 1/2"	48.99
PL163000125005	125 x 1/2"	63.97
PL163000125007	125 x 3/4"	63.97
PL163000125010	125 x 1"	63.97
PL163000125013	125 x 1 1/4"	63.97
PL163000125015	125 x 1 1/2"	63.97
PL163000160005	160 x 1/2"	90.72
PL163000160007	160 x 3/4"	90.72
PL163000160010	160 x 1"	90.72
PL163000160013	160 x 1 1/4"	90.72
PL163000160015	160 x 1 1/2"	90.72
PL163000180005	180 x 1/2"	117.33
PL163000180007	180 x 3/4"	117.33
PL163000180010	180 x 1"	117.33
PL163000180013	180 x 1 1/4"	117.33
PL163000180015	180 x 1 1/2"	117.33



16540 Self-Tapping Swivel Tee

Stainless Bolts



Code	d	£ ea
PL165400075025	75 - 25	126.35

7991 Tapper Assembly Tool for use with 16540 see page 38.

16076 Saddle Single Outlet

With Reinforcing Ring,
Stainless Bolts



Code	d	£ ea
PL160770020005	20 x 1/2"	8.40
PL160770025005	25 x 1/2"	9.81
PL160770025007	25 x 3/4"	9.81
PL160770032005	32 x 1/2"	10.83
PL160770032007	32 x 3/4"	10.83
PL160770032010	32 x 1"	10.83
PL160770040005	40 x 1/2"	12.26
PL160770040007	40 x 3/4"	12.26
PL160770040010	40 x 1"	12.26
PL160770050005	50 x 1/2"	13.70
PL160770050007	50 x 3/4"	13.70
PL160770050010	50 x 1"	13.70
PL160770050013	50 x 1 1/4"	13.70
PL160770063005	63 x 1/2"	16.42
PL160770063007	63 x 3/4"	16.42
PL160770063010	63 x 1"	16.42
PL160770063013	63 x 1 1/4"	16.42
PL160770063015	63 x 1 1/2"	16.42
PL160770075005	75 x 1/2"	22.33
PL160770075007	75 x 3/4"	22.33
PL160770075010	75 x 1"	22.33
PL160770075013	75 x 1 1/4"	22.33
PL160770075015	75 x 1 1/2"	22.33
PL160770075020	75 x 2"	22.33
PL160770090005	90 x 1/2"	27.13
PL160770090007	90 x 3/4"	27.13
PL160770090010	90 x 1"	27.13
PL160770090013	90 x 1 1/4"	27.13
PL160770090015	90 x 1 1/2"	27.13
PL160770090020	90 x 2"	27.13
PL160770110005	110 x 1/2"	32.20
PL160770110007	110 x 3/4"	32.20
PL160770110010	110 x 1"	32.20
PL160770110013	110 x 1 1/4"	32.20
PL160770110015	110 x 1 1/2"	32.20
PL160770110020	110 x 2"	32.20
PL160770125007	125 x 3/4"	42.24
PL160770125010	125 x 1"	42.24
PL160770125013	125 x 1 1/4"	42.24
PL160770125015	125 x 1 1/2"	42.24
PL160770125020	125 x 2"	42.24
PL160770140010	140 x 1"	50.56
PL160770140013	140 x 1 1/4"	50.56
PL160770140015	140 x 1 1/2"	50.56
PL160770140020	140 x 2"	50.56
PL160770160010	160 x 1"	70.92
PL160770160013	160 x 1 1/4"	70.92
PL160770160015	160 x 1 1/2"	70.92
PL160770160020	160 x 2"	70.92
PL160770180010	180 x 1"	102.01
PL160770180013	180 x 1 1/4"	102.01
PL160770180015	180 x 1 1/2"	102.01
PL160770180020	180 x 2"	102.01

Pushfit



PLASSON pushfit fittings provide an alternative solution to the mechanical range, providing a tamper proof connection to PE and other pipe materials such as copper, PB, PEX. This compact and attractive fitting is ideal for the plumbing market, where space is limited and appearance is crucial. UK Water Reg4 approved and rated to PN16.

1001 Coupler



Code	d	£ ea
PP1001U0020	20	8.49
PP1001U0025	25	9.13
PP1001U0032	32	21.41
PP1001U0040	40	46.45
PP1001U0050	50	50.83
PP1001U0063	63	76.28

1011 Reducing Coupler



Code	d	£ ea
PP1011U0025020	25 x 20	17.08
PP1011U0032020	32 x 20	28.92
PP1011U0032025	32 x 25	28.96
PP1011U0040032	40 x 32	48.31
PP1011U0050025	50 x 25	54.17
PP1011U0050032	50 x 32	61.92
PP1011U0063032	63 x 32	79.32
PP1011U0063050	63 x 50	77.91

1001C Coupler

PE x Cu/PB/PEX



Code	d	£ ea
PP1001CU020015	20 x 15	14.80
PP1001CU025015	25 x 15	15.41
PP1001CU025022	25 x 22	15.80
PP1001CU032028	32 x 28	29.56

1001M Coupler

Metric to Imperial



Code	d	£ ea
PP1001M6020005	20 x 1/2"	10.33
PP1001M6025005	25 x 1/2"	10.86
PP1001M6025007	25 x 3/4"	11.59
PP1001M6032010	32 x 1"	23.59

1002 Male Adaptor



Code	d	£ ea
PP1002U0020005	20 x 1/2"	7.93
PP1002U0020007	20 x 3/4"	8.49
PP1002U0025005	25 x 1/2"	9.52
PP1002U0025007	25 x 3/4"	9.52
PP1002U0025010	25 x 1"	14.80
PP1002U0032007	32 x 3/4"	14.77
PP1002U0032010	32 x 1"	14.77
PP1002U0032013	32 x 1 1/4"	14.77
PP1002U0040010	40 x 1"	29.19
PP1002U0040013	40 x 1 1/4"	29.19
PP1002U0040015	40 x 1 1/2"	29.19
PP1002U0050015	50 x 1 1/2"	36.51
PP1002U0050020	50 x 2"	36.51
PP1002U0063015	63 x 1 1/2"	49.80
PP1002U0063020	63 x 2"	49.80

1002C Male Adaptor

to Cu/PB/PEX



Code	d	£ ea
PP1002CU7015007	15 x 3/4"	12.87
PP1002CU7022007	22 x 3/4"	13.54
PP1002CU7028010	28 x 1"	21.69

1003 Female Adaptor



Code	d	£ ea
PP1003U0020005	20 x 1/2"	9.20
PP1003U0025005	25 x 1/2"	10.53
PP1003U0025007	25 x 3/4"	10.10
PP1003U0025010	25 x 1"	13.25
PP1003U0032007	32 x 3/4"	13.25
PP1003U0032010	32 x 1"	13.25
PP1003U0032013	32 x 1 1/4"	13.25
PP1003U0040013	40 x 1 1/4"	32.16
PP1003U0050015	50 x 1 1/2"	43.52
PP1003U0050020	50 x 2"	43.52
PP1003U0063015	63 x 1 1/2"	64.68
PP1003U0063020	63 x 2"	64.68

1003C Female Adaptor

to Cu/PB/PEX



Code	d	£ ea
PP1003CU7015007	15 x 3/4"	17.11
PP1003CU7022007	22 x 3/4"	17.75



1004 90° Tee



Code	d	£ ea
PP1004U0020	20	14.06
PP1004U0025	25	23.27
PP1004U0032	32	31.46
PP1004U0040	40	60.08
PP1004U0050	50	65.82
PP1004U0063	63	102.39

1034 90° Reducing Tee



Code	d	£ ea
PP1034U0025020	25 x 20 x 25	26.53
PP1034U0032020	32 x 20 x 32	35.68
PP1034U0032025	32 x 25 x 32	35.65

1014 90° Tee

Female Threaded



Code	d	£ ea
PP1014U0020005	20 x 1/2" x 20	13.08
PP1014U0025007	25 x 3/4" x 25	19.67
PP1014U0032010	32 x 1" x 32	27.37

1015 90° Female Elbow



Code	d	£ ea
PP1015U0020005	20 x 1/2"	10.16
PP1015U0020007	20 x 3/4"	10.16
PP1015U0025005	25 x 1/2"	13.52
PP1015U0025007	25 x 3/4"	13.52
PP1015U0025010	25 x 1"	13.52
PP1015U0032007	32 x 3/4"	21.93
PP1015U0032010	32 x 1"	21.93

1085 90° Male Elbow



Code	d	£ ea
PP1085U0020005	20 x 1/2"	7.69
PP1085U0020007	20 x 3/4"	7.69
PP1085U0025005	25 x 1/2"	8.95
PP1085U0025007	25 x 3/4"	8.95
PP1085U0025010	25 x 1"	8.95
PP1085U0032007	32 x 3/4"	15.09
PP1085U0032010	32 x 1"	15.09
PP1085U0032013	32 x 1 1/4"	15.09
PP1085U0040013	40 x 1 1/4"	29.06
PP1085U0050015	50 x 1 1/2"	41.08
PP1085U0063020	63 x 2"	50.06

1005 90° Elbow



Code	d	£ ea
PP1005U0020	20	10.53
PP1005U0025	25	15.49
PP1005U0032	32	25.52
PP1005U0040	40	50.60
PP1005U0050	50	54.52
PP1005U0063	63	73.77

1051 90° Reducing Elbow



Code	d	£ ea
PP1051U0025020	25 x 20	17.57

1005M 90° Elbow

Metric to Imperial



Code	d	£ ea
PP1005M6025005	25 x 1/2"	19.00
PP1005M6025007	25 x 3/4"	18.50

1075 Wall Plate Elbow



Code	d	£ ea
PP1075U0020005	20 x 1/2"	20.75
PP1075U0020007	20 x 3/4"	20.75
PP1075U0025005	25 x 1/2"	27.68
PP1075U0025007	25 x 3/4"	27.68

1012 End Plug



Code	d	£ ea
PP1012U0020	20	10.49
PP1012U0025	25	13.43
PP1012U0032	32	19.60
PP1012U0040	40	33.76
PP1012U0050	50	42.57
PP1012U0063	63	62.96

A liner must be used with metric MDPE pipe to ensure conformance with UK Water Reg4. See page 14 for 7950 liners. When using PB/PEX pipes, use pipe manufacturers liner.

Valves

UK Water Reg4 approved stop taps for above & below ground use. Body & nut are made from polypropylene, the 'O' ring from high quality NBR.



3407 Stop Tap

Above & Below Ground



Code	d	£ ea
PV03407020	20	45.67
PV03407025	25	64.78
PV03407032	32	100.33

3405 Stop Tap

Above & Below Ground

FI x FI



Code	d	£ ea
PV03404077	3/4"	25.08
PV03404110	1"	27.26

3489 Stop Tap

for Imperial Pipe



Code	d	£ ea
PV0340M0005	1/2"	52.55
PV0340M0007	3/4"	74.50

7509 Stop Tap

Irish Normal Gauge



Code	d	£ ea
PL0340N0005	1/2" x 1/2"	52.57
PL0340N0007	3/4" x 3/4"	74.54

7609 Stop Tap

Irish Heavy Gauge



Code	d	£ ea
PL0340H0005	1/2" x 1/2"	52.57
PL0340H0007	3/4" x 3/4"	74.54

0341 Pushfit Stop Tap

Above & Below Ground



Code	d	£ ea
PV0341U0020	20	52.15
PV0341U0025	25	73.90
PV0341U0032	32	114.55

0341C Pushfit Stop Tap

PE x Cu/PB/PEX

Above Ground Only



Code	d	£ ea
PV0341CU020015	20 x 15	66.14
PV0341CU025015	25 x 15	89.42
PV0341CU025022	25 x 22	101.20
PV0341CU032028	32 x 28	131.62



3610 Stop Tap Chamber

with plastic lid or cast lid

Code	d	£ ea
PD36100P	c/w plastic lid	58.42
PD36100C	c/w cast lid	137.78

- For 20, 25 & 32mm PLASSON stop taps
- 750mm guard tube can be cut to length
- Plastic lid: 1 ton rated (Class C rated)
- Cast iron lid: 5 ton rated (Class B rated)



Components for 3610



Code	d	£ ea
PD3612025	750mm tube	20.86
PD3613025	sleeve	8.90
PD3611025	base	17.85
PD3614025	4" surface box plastic	17.28
PD3605001	6" surface box cast	93.26



3703 Mains Stop Valve Above & Below Ground

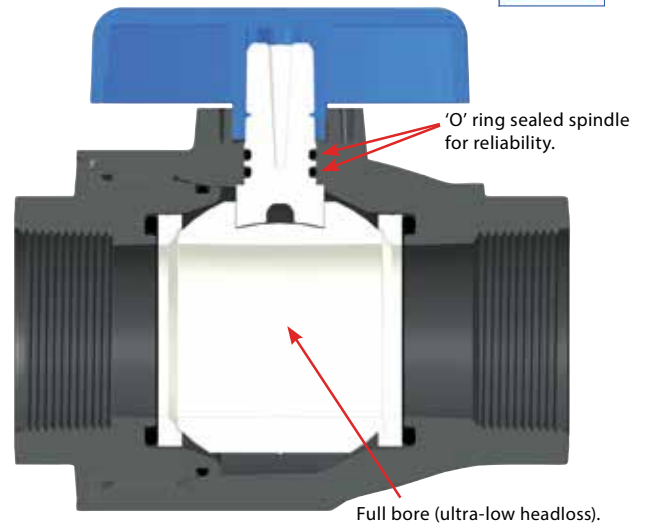
Full bore 1/4 turn ball valve with a drain port option, for mains isolation

Manufactured from glass reinforced polyamide, the 3703 now provides an alternative solution to the traditionally used gunmetal and dZR stop valves.

The 3703 is a UK Water Reg4 approved stop valve for 1½"/50mm and 2"/63mm mains pipe manufactured from non metallic materials. The ¾" - 2" range give a full bore alternative to the standard stop tap.

Approved to BS8588:2017 the 3703 is the new standard for use in contaminated ground, at all sizes.

For above ground use, a version is available which has drain/test ports on one end of the valve.



3703 Mains Stop Valve

Above & Below Ground
FI x FI



Code	d	dn	£ ea
PV0370300007	¾"	20	72.16
PV0370300010	1"	25	85.46
PV0370300013	1 ¼"	32	102.55
PV037030U0015	1 ½"	40	123.44
PV037030U0020	2"	50	180.41

3703 Mains Stop Valve

c/w Drain / Test Ports
Above Ground Only
FI x FI



Code	d	dn	£ ea
PV037030F007	¾"	20	91.16
PV037030F010	1"	25	104.46
PV037030F013	1 ¼"	32	123.44
PV037030F015	1 ½"	40	136.73
PV037030F020	2"	50	208.91

3703 Mains Stop Valve

Above & Below Ground
FI x FI



Code	d	dn	£ ea
PV0370300050	50mm	40	189.15
PV0370300063	63mm	50	268.45



9048 Universal Stop Tap DZR

Above & Below Ground

Internal 1 1/2" FI thread
External 2" MI thread



Code	d	£ ea
PV9048020	1 1/2" FI / 2" MI	447.07
PV9048050	50	522.82
PV9048063	63	542.26

BS5433 Valves

9053 Stop Tap Gun Metal

BS5433 FI x FI



Code	d	£ ea
PV9053100	1/2"	67.59
PV9053200	3/4"	125.39
PV9053300	1"	147.17
PV9053500	1 1/2"	495.81
PV9053600	2"	688.62

9050 Universal Stop Tap DZR

Above & Below Ground



Code	d	£ ea
PV9050020	20	81.26
PV9050025	25	102.61
PV9050032	32	214.87

9051 Universal Stop Tap DZR

Above & Below Ground

Square Drive



Code	d	£ ea
PV9051528	20	81.26
PV9051529	25	102.61
PV9051530	32	214.87

WIS 4-23-04 Valves

9061 Plug Tap DZR

WIS 4-23-04 Type



Code	d	£ ea
PV9061005	25	144.17
PV9061007	32	187.56



Polymer Ball Valves

1379 Ball Valve PVC

PE x FI



Code	d	£ ea
PV1379020K	20 x 1/2"	37.65
PV1379025K	25 x 3/4"	43.24
PV1379032K	32 x 1"	58.34
PV1379040K	40 x 1 1/4"	70.28
PV1379050K	50 x 1 1/2"	95.72
PV1379063K	63 x 2"	169.86

1151 Ball Valve PVC

Double Union FI x FI



Code	d	£ ea
PV1151003K	3/8"	37.40
PV1151005K	1/2"	37.40
PV1151007K	3/4"	40.16
PV1151010K	1"	50.01
PV1151013K	1 1/4"	52.49
PV1151015K	1 1/2"	86.43
PV1151020K	2"	117.40
PV1141025K	2 1/2"	307.28
PV1141030K	3"	407.10
PV1141040K	4"	514.77

2099 Arctic Ball Valve

Ice Resistant

FI x FI



Code	d	£ ea
PV2099001	1/2"	34.44
PV2099002	3/4"	42.05
PV2099003	1"	61.14

Quick Coupling Valve & Key

Flexible, Quick & Easy



The Quick Coupling Valve allows temporary access to a water sprinkler system with the use of a valve key.

Ideal for using in livestock watering systems, sprinkler irrigation systems and landscaping irrigation.

- Single action snap-in-key opens valve for water flow into hose/sprinkler. Just snap key in place at the desired fixed valve position, and you're ready to go. No turning water mains on and off.
- Easy release of key, automatically shuts valve.
- Time and money saving.
- Highly durable and reliable.



3039 Quick Coupling Valve & Key



Code	d	£ ea
PV03039037	3/4" Valve	34.83
PV03039030	1" Valve	34.83
PV03139020	Valve Key	14.66

Valves for welding (Electrofusion connection)

1148 PVC Ball Valve (for EF)

Double Spigot



Code	d	£ ea
PV1148020	20	53.87
PV1148025	25	60.45
PV1148032	32	66.37
PV1148040	40	88.37
PV1148050	50	102.91
PV1148063	63	132.98

1378 PVC Ball Valve (for EF/Mech)

PE x Single Spigot



Code	d	£ ea
PV1378020	20	40.72
PV1378025	25	43.97
PV1378032	32	47.25
PV1378040	40	64.05
PV1378050	50	86.62
PV1378063	63	129.90

43620 PE Ball Valve (for EF connection)

Double Spigot

(In accordance with BSEN12201 & BSEN1555)



Code	d	£ ea
PV436207025	25	276.51
PV436207032	32	256.05
PV436207040	40	319.02
PV436207050	50	382.83
PV436207063	63	404.11
PV436207075	75	425.35
PV436207090	90	744.48
PV436207110	110	850.88
PV436207125	125	957.12
PV436207160	160	1538.08

For operating key see page 38.

Check Valves (UK Water Reg4 Approved)

9077 Double Check Valve DZR

FI x FI



Code	d	£ ea
PV9077100	1/2"	41.52
PV9077200	3/4"	86.10
PV9077300	1"	151.34
PV9077500	1 1/2"	370.20
PV9077600	2"	479.38

9078 Single Check Valve DZR

FI x FI



Code	d	£ ea
PV9078500	1 1/2"	175.18
PV9078600	2"	226.86

Check Valves (Non UK Water Reg4 Approved)

9057 Double Check Valve DZR

FI x FI



Code	d	£ ea
PV9057100	1/2"	16.97
PV9057200	3/4"	29.65
PV9057300	1"	40.29



1061 Non Return Valve PVC

FI x FI



Code	d	£ ea
PV1061003K	3/8"	61.91
PV1061005K	1/2"	62.13
PV1061007K	3/4"	76.62
PV1061010K	1"	87.09
PV1061013K	1 1/4"	109.55
PV1061015K	1 1/2"	160.07
PV1061020K	2"	224.40

1631 Air Release Valve PVC

Vertically Mounted

FI x FI



Code	d	£ ea
PV1631005K	1/2"	62.13
PV1631007K	3/4"	76.62
PV1631010K	1"	87.09
PV1631013K	1 1/4"	109.55
PV1631015K	1 1/2"	160.07
PV1631020K	2"	224.40

3047 Angle Seat Valve PP

MI x MI



Code	d	£ ea
PV03047055	1/2"	24.44
PV03047077	3/4"	27.26
PV03047110	1"	32.35
PV03047188	1 1/4"	91.83
PV03047155	1 1/2"	103.01
PV03047220	2"	127.39

3048 Angle Seat Valve PP

PE x MI Thread



Code	d	£ ea
PV03048200	20 x 1/2"	29.70
PV03048250	25 x 3/4"	30.25
PV03048320	32 x 1"	37.14
PV03948400	40 x 1 1/4"	108.84
PV03948500	50 x 1 1/2"	120.49
PV03948630	63 x 2"	151.30

9056 Bib Tap Hose Union DZR
c/w Double Check Valve



Code	d	£ ea
PV9056005	1/2"	22.58
PV9056007	3/4"	61.14

9076 Bib Tap Hose Union DZR



Code	d	£ ea
PV9076100	1/2"	15.29
PV9076200	3/4"	37.31

9070 Bib Tap DZR
Lockshield BS1010



Code	d	£ ea
PV9070100	1/2"	40.29

9071 Bib Tap DZR
Lockshield BS1010
with Check Valve



Code	d	£ ea
PV9071100	1/2"	80.37

2100 Arctic Ice Resistant
Bib Cock



Code	d	£ ea
PV2100001	1/2"	34.44
PV2100003	3/4"	52.91
PV2100004	1"	77.84

2100 Bib Cock
Lever Handle



Code	d	£ ea
PV2100005	1/2"	16.64
PV2100007	3/4"	30.61

7750 Wall Plate Elbow PP



New size

Code	d	£ ea
PL077500020005	20 x 1/2"	19.40
PL077500025005	25 x 1/2"	25.86
PL077500025007	25 x 3/4"	25.86

1075 Pushfit Wall Plate Elbow PP



Code	d	£ ea
PP1075U0020005	20 x 1/2"	20.75
PP1075U0020007	20 x 3/4"	20.75
PP1075U0025005	25 x 1/2"	27.68
PP1075U0025007	25 x 3/4"	27.68

9055 Wall Plate Elbow DZR



Code	d	£ ea
PV9055005	20 x 1/2"	42.15
PV9055007	25 x 3/4"	52.86

1000 Wall Plate Elbow



Code	d	£ ea
PL9075020005	20 x 1/2"	24.77
PL9075025005	25 x 1/2"	26.34
PL9075025007	25 x 3/4"	32.83



Water Meter Connection & Manifolds



Connecting meters below ground

Boundary boxes, lids and meter connection points for underground installation.

3511 MCP (BG) Kit Below Ground Use

No Drain Off



(Supplied with full flow cap)

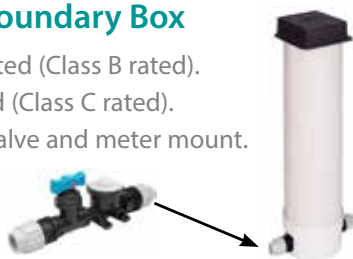
Code	d	£ ea
PV03510020	25	100.16

3513/4 Meter Boundary Box

Cast iron lid: 5 ton rated (Class B rated).

Plastic lid: 1 ton rated (Class C rated).

Includes 3511 stop valve and meter mount.



Code	d	£ ea
PD35100C	c/w cast lid	230.59
PD35100P	c/w plastic lid	177.20

Boundary Box Lid



Code	d	£ ea
PD3605001	6" surface box cast	93.26
PD3604001	9" surface box plastic	47.89

Components for 3513/4

Code	d	£ ea
PD3602001	650mm guard tube	33.26
PD3607001	foam insulation plug	6.10
PD3513A	meter box base	15.87

3543/4 Adjustable Boundary Box Standard & Contaminated (Barrier)

3/4" FI connection to barrier pipe.
25mm pushfit for connection to metric PE.
Height adjustable 500mm - 800mm.



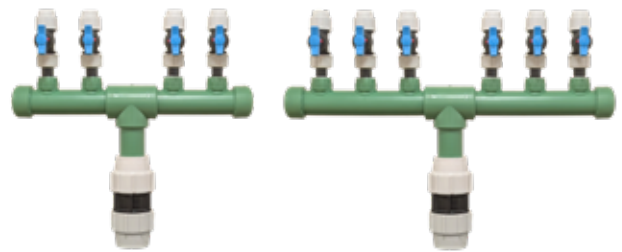
Code	d	£ ea
PD35440B	3/4"	396.30
PD35430P	25	230.59

Below-Ground Manifolds

Our below-ground manifolds provide a complete solution for multi-use water distribution, combining flexibility and ease of installation in one unified package.

The robust header efficiently divides the incoming mains water supply into 4 or 6 individual outlets, each equipped with a pre-fitted stop tap and optional meter housing unit.

3515 Below-ground Manifold with Stop Tap



Code	d	Description	£ ea
PD3515C04ST063	63 x 25	4 Port Manifold c/w Stop Tap	858.91
PD3515C06ST063	63 x 25	6 Port Manifold c/w Stop Tap	1099.58

3515 Below-ground Manifold with MCP (BG) Kit

(Supplied with full flow cap)



Code	d	Description	£ ea
PD3515C04MC063	63 x 25	4 Port Manifold c/w MCP Kit	991.55
PD3515C06MC063	63 x 25	6 Port Manifold c/w MCP Kit	1298.59

9001 Concentric Water Meter

1 1/2" BSP

ISO 4064 (class D), BS-EN 14154,
UK Water Reg4.



Code	Nominal Size	Nominal Flow Rate (m3/h)	£ ea
PD9001015	15mm	1.6	202.45

Installation Requirements

The meter can be installed in any position (horizontal, vertical or inclined).

The meter must be always full of water while operating.

Prior to the installation of a new meter, the pipeline must be flushed out.

PLASSON® MCP



For single meter connection - above ground use only

Many water meter connections are now required inside domestic properties (replacing the traditional boundary box / underground position). WATER UK & the HBF (Home Builders Federation) Meter Location Best Practice Guidelines state the stop tap and water meter should be located above ground. For a single housing unit, a standard meter manifold requires a drain port to be incorporated into the assembly.

The new PLASSON MCP (meter connection point) provides mains isolation, meter connection, drain point and back flow prevention in a compact one piece unit.

Key Features

- Monobloc design for quick and easy installation
- Quarter turn high flow mains stop valve
- 1 1/2" Class D concentric meter connection
- Approved double check valve built in
- Built in drain point
- NBR & EPDM sealing for water tight integrity
- Kiwa UK Regulation 4 (KUKreg4) approved

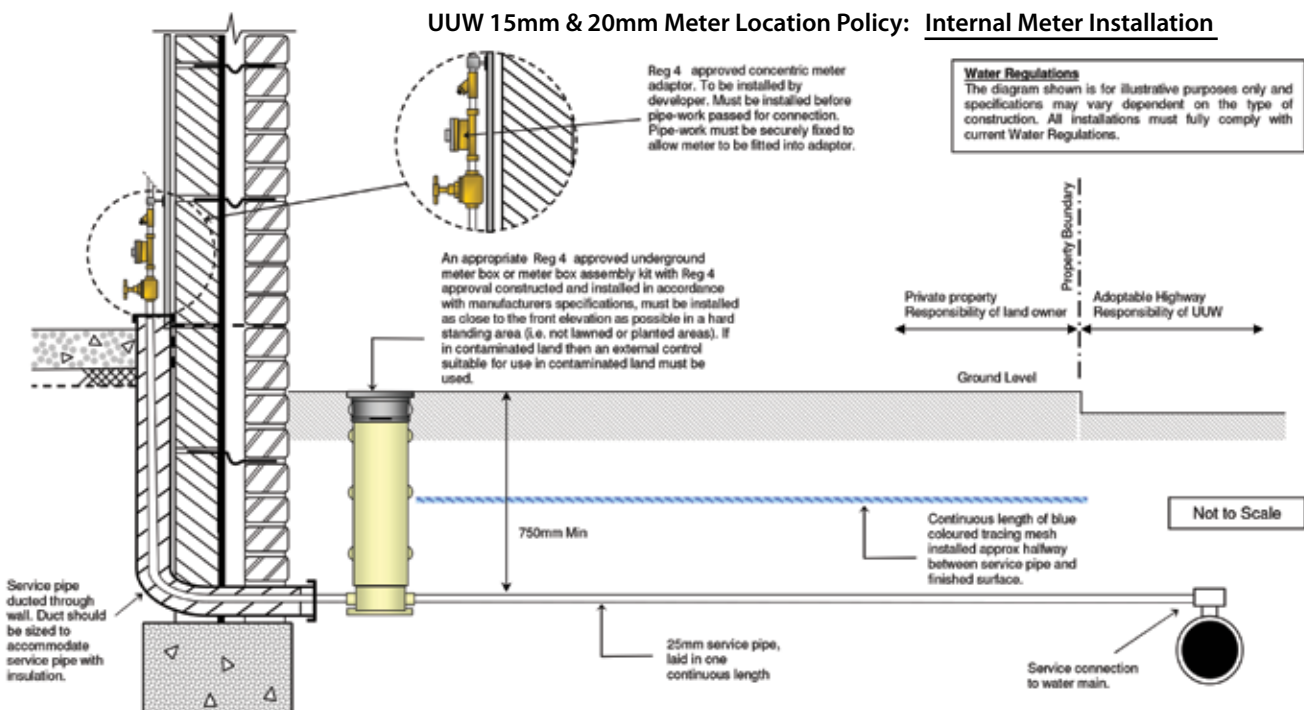


MCP - for single meter connection

Code	Description	£ ea
PM0351071025025	MCP 25mm PE x 25mm PE	185.92
PM0351071025015	MCP 25mm PE x 15mm Cu/PB/PEX	179.20
PM0351071025022	MCP 25mm PE x 22mm Cu/PB/PEX	179.20
PM0351021025015	MCP 25mm Barrier x 15mm Cu/PB/PEX	184.80
PM0351021025022	MCP 25mm Barrier x 22mm Cu/PB/PEX	184.80
PM0351071022022	MCP 22mm Cu/PB/PEX x 22mm Cu/PB/PEX	184.80
PM0351071028028	MCP 28mm Cu/PB/PEX x 28mm Cu/PB/PEX	184.80



UUW 15mm & 20mm Meter Location Policy: Internal Meter Installation



PLASSON® MCP System



The PLASSON MCP system allows the division of the mains water supply and the installation of a water meter for individual properties in multi-dwelling buildings as required by guidelines and requirements of the UK Water Utility companies and the Water Supply (Water Fittings) Regulations:

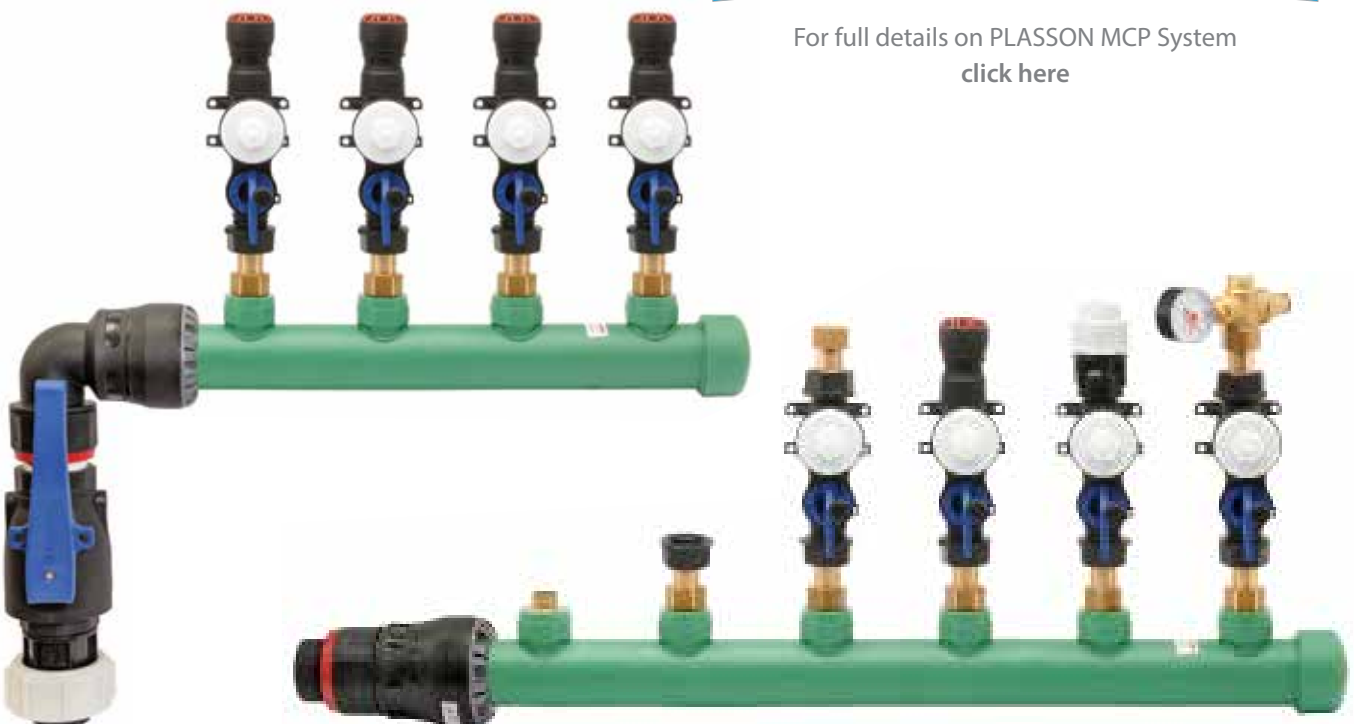
- Isolate the incoming water main / boosted water supply
- Split incoming water supply by way of manifold
- Isolate water supply to individual dwelling
- Provide connection point for class D water meter (normally supplied by Water Utility company)
- Provide backflow prevention with serviceable double check valve (ED suitable for fluid category 3)
- Provide a drain point for the property, with the individual property main isolated
- Allow connection to all proprietary plumbing pipework systems

The combination of the new MCP unit and the manifold system brings a complete new dimension to the M&E contractor and plumber providing a simple and cost effective system to this often overlooked but vitally important part of any building infrastructure. The MCP unit is manufactured from high grade engineering polypropylene, and the manifold system from PP-RCT, all components approved to UK Water Reg4 either by Kiwa KUKreg4 or WRAS approvals.

Combined with the extensive range of PLASSON fittings and Mains Stop Valves, the new PLASSON MCP system provides an unrivalled solution for all stake holders involved in the domestic and commercial mechanical services sector.



For full details on PLASSON MCP System [click here](#)



PLASSON® MCP (meter connection point)

PLASSON MCP unit

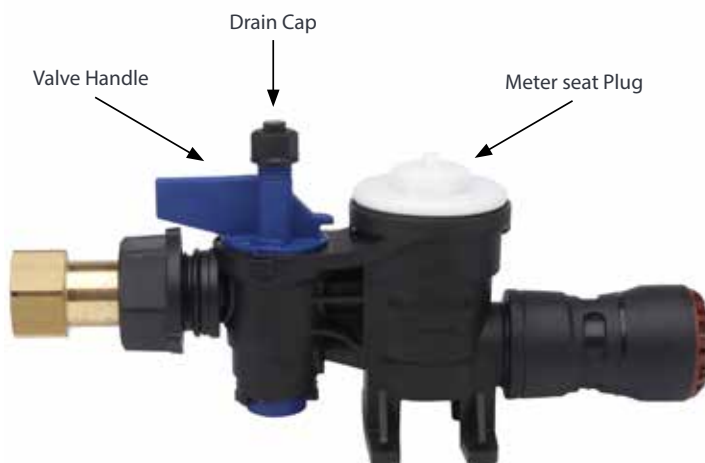
The new PLASSON MCP (meter connection point) provides mains isolation, meter connection, drain point and back flow prevention in a compact one piece unit.

Designed specifically for multi-occupancy buildings, such as apartments and high-rise, the PLASSON MCP can be fitted at each apartment, or more commonly it can simply be connected to the PLASSON multi-port manifold system located in a riser or plant room.

The MCP is supplied with connections to suit pipework on site, such as 22 and 28mm Cu/PB/PEX, MDPE or 3/4" BSPP (ISO 228) for connection to any other fitting type.

Key Features

- Quarter turn high flow mains stop valve
- 1 1/2" Class D concentric meter connection with full flow
- Approved double check valve built in under meter seat
- Drain point that isolates property from main supply while in drain position
- Space saving monobloc design for quick and easy installation
- NBR & EPDM sealing throughout for complete water tight integrity
- Kiwa UK Regulation 4 (KUKreg4) approved



MCP - BSPP x BSPP

Code	Description	£ ea
PM0351071897007	MCP 3/4" BSPP x 3/4" BSPP	210.00



MCP - BSPP x Cu/PB/PEX

Code	Description	£ ea
PM0351071897022	MCP 3/4" BSPP x 22mm Cu/PB/PEX	201.60
PM0351071897028	MCP 3/4" BSPP x 28mm Cu/PB/PEX	201.60



MCP - BSPP x PE

Code	Description	£ ea
PM0351071897025	MCP 3/4" BSPP x 25mm PE	201.60
PM0351071897032	MCP 3/4" BSPP x 32mm PE	201.60



PLASSON® Multiport Manifolds

Our manifold offering continues to evolve. Contact us when finalising your design to ensure you benefit from the latest options and the best possible solution.

The PLASSON Multiport Manifold system is designed to connect incoming water mains and enable separation into individual supply pipes for connection of multiple dwellings.

An extensive range of one piece construction manifolds are available with between 2 and 16 outlets. There are two options for connecting the incoming supply, and outlets at either 130mm centres, allowing meter faces to line up, or 90mm centres alternately staggered, both meeting the water utility companies installation requirements for water meters.



End Supply Manifolds

130mm centres

2" MI end



130mm Centres - 2" MI End	PORTS	£ ea
PM3525E 2B03	2	478.31
PM3525E 3B03	3	553.54
PM3525E 4B03	4	628.74
PM3525E 5B03	5	703.90
PM3525E 6B03	6	779.04
PM3525E 7B03	7	854.19
PM3525E 8B03	8	929.36
PM3525E 9B03	9	1004.50
PM3525E 10B03	10	1079.64
PM3525E 11B03	11	1154.90
PM3525E 12B03	12	1230.04
PM3525E 13B03	13	1305.18
PM3525E 14B03	14	1380.38
PM3525E 15B03	15	1455.52
PM3525E 16B03	16	1530.66

90mm centres

2" MI end



90mm Centres - 2" MI End	PORTS	£ ea
PM3525E 3A03	3	629.42
PM3525E 4A03	4	729.86
PM3525E 5A03	5	830.28
PM3525E 6A03	6	930.73
PM3525E 7A03	7	1031.15
PM3525E 8A03	8	1131.55
PM3525E 9A03	9	1232.09
PM3525E 10A03	10	1332.51
PM3525E 11A03	11	1432.98
PM3525E 12A03	12	1533.40
PM3525E 13A03	13	1633.81
PM3525E 14A03	14	1734.22
PM3525E 15A03	15	1834.64
PM3525E 16A03	16	1935.06



Centre Supply Manifolds

130mm centres

2" MI end



90mm centres

2" MI end



130mm Centres - 2" MI End	PORTS	£ ea
PM3525C 2B03	2	720.98
PM3525C 4B03	4	802.95
PM3525C 5B03	5	864.43
PM3525C 6B03	6	925.95
PM3525C 7B03	7	987.42
PM3525C 8B03	8	1048.90
PM3525C 9B03	9	1110.38
PM3525C 10B03	10	1171.98
PM3525C 11B03	11	1233.46
PM3525C 12B03	12	1294.93
PM3525C 13B03	13	1356.47
PM3525C 14B03	14	1417.95
PM3525C 15B03	15	1479.43
PM3525C 16B03	16	1540.91

90mm Centres - 2" MI End	PORTS	£ ea
PM3525C 3A03	3	754.83
PM3525C 4A03	4	830.28
PM3525C 5A03	5	898.62
PM3525C 6A03	6	966.93
PM3525C 7A03	7	1035.24
PM3525C 8A03	8	1103.55
PM3525C 9A03	9	1171.98
PM3525C 10A03	10	1240.29
PM3525C 11A03	11	1308.60
PM3525C 12A03	12	1376.96
PM3525C 13A03	13	1445.27
PM3525C 14A03	14	1513.58
PM3525C 15A03	15	1581.89
PM3525C 16A03	16	1650.20



Drain off cock (DOC) for manifolds

To add a DOC to any of the above manifolds, order code PM3525DOC for each manifold ordered.



Code	Description	£ ea
PM3525DOC	Drain point for PP-RCT manifold	71.87

Available with 2" MI 90° elbow inlet connection

Key Features

- One piece construction from PP-RCT
- 2 outlet to 16 outlet ports from 63mm header
- End Supply and Centre Supply options
- Supplied with a straight or elbow PA threaded inlet connection
- 130mm straight or 90mm staggered centres to allow meter installation position as per Water Utility company requirements
- Specifically designed to work with the PLASSON MCP Meter connection point
- Available with or without drain port

PlassGas reusable

For purging and bypass applications on low and medium pressure gas mains.

Do not backfill as these fittings are for temporary use only and are recommended for a maximum 168 hour (7 day) use.



PlassGas are a unique multiple reusable fitting for the gas industry, requiring basic tooling to install.

This concept reduces onsite labour and material costs, and your CARBON FOOTPRINT.

Purging

A standard tapping tee now replaces the specialist dedicated purge tee, this enables the installer to simply connect a PlassGas Reusable Threaded Elbow directly onto an industry standard vent stack for everyday purging applications, time and time again.

For temporary capping off, install a PlassGas Reusable End Cap to the standard tapping tee, this can now become your first connection the following day.

Building a Bypass

By using PlassGas Reusable fittings there is no longer a requirement for single use electrofusion fittings which are later discarded along with the pipe and valves.

Simply construct your bypass with PlassGas Reusable fittings then once it's served it's purpose can be disconnected, keeping valve and pipe assemblies in tact, stored and ready for the next installation. Alternatively if using a Flexi Hose system, PlassGas Reusable offers a solution to connect directly onto a standard tapping tee.

The PlassGas Reusable step by step installation guide is available to download from our website.

For product demo please visit:

<https://www.youtube.com/watch?v=6-QwdbmsXJQ>

1099 PlassGas Wrench



Code	d	£ ea
PG10990032P	for 32mm	38.93
PG10990063P	for 63mm	69.66

7960 Chamfer Tool



Code	d	£ ea
PJ189600063020P	20-63	138.97

1077 Reusable MI Elbow



Code	d	£ ea
PG1077UQ032010	32 x 1"	79.74
PG1077UQ063020	63 x 2"	178.92

1076 Reusable FI Elbow



Code	d	£ ea
PG1076UQ032010	32 x 1"	79.74
PG1076UQ063020	63 x 2"	178.92

1005 Reusable 90° Elbow



Code	d	£ ea
PG1005UQQ032	32	71.68
PG1005UQQ063	63	159.49

1001 Reusable Coupler



Code	d	£ ea
PG1001UQQ032	32	67.87
PG1001UQQ063	63	159.49

1012 Reusable End Cap



Code	d	£ ea
PG1012UQ0032	32	47.15
PG1012UQ0063	63	103.71

1072 Reusable MI Adaptor



Code	d	£ ea
PG1072UQ063020	63 x 2"	161.28

1004 Reusable 90° Tee



Code	d	£ ea
PG1004UQQ032	32	79.07
PG1004UQQ063	63	185.70

Repair clamps



The PLASSON range of Repair Clamps are designed to repair water mains pipes where corrosion or mechanical damage has caused leakage. The clamps materials are selected to give maximum service life and are designed for ease of use. All materials meet the requirements of UK Water Reg4 and DWI Reg 31 for use on potable water systems. Both types are PN16 pressure rated & have a waffle type seal ensuring optimum seal. The design of the clamps reduces the size of excavation required and each have an excellent tolerance range.

Stainless Steel

- Stainless steel construction with ductile clamping jaws.
- Can be used on live mains.
- Captive bolts with nuts that do not require removal to use the clamp.

6800 Repair Clamp

Stainless

(76mm - 1 bolt)



Code	d	£ ea
PK6800200	21-25 x 76	19.43
PK6800300	26-30 x 76	21.82
PK6800400	33-37 x 76	23.08
PK6800500	42-45 x 76	23.48
PK6800600	48-51 x 76	24.13
PK6800700	60-65 x 76	39.60

6800 Repair Clamp

Stainless

(200mm - 3 bolt)



Code	d	£ ea
PK6800750	78-88 x 200	205.39
PK6800800	88-98 x 200	213.87
PK6800850	92-103 x 200	225.16
PK6800875	108-118 x 200	229.90
PK6800900	114-126 x 200	234.18
PK6800100	168-182 x 200	272.17

6800 Repair Clamp

Stainless

(300mm - 4 bolt)



Code	d	£ ea
PK6800110	210-223 x 300	400.98
PK6800120	222-234 x 300	404.05
PK6800130	243-255 x 300	434.82
PK6800140	273-285 x 300	594.39
PK6800150	285-297 x 300	594.39

Ductile Iron

- Ductile iron construction with epoxy coating and stainless bridging plates.
- Two part body separates so it can be used without cutting the pipe.
- Captive bolts with heads retained in recesses. Only one tool required for tightening.

6801 Repair Clamp

Ductile Iron

(200mm - 4 bolt)



Code	d	£ ea
PK6801100	92-103 x 200	294.65
PK6801200	115-125 x 200	312.71
PK6801300	141-154 x 200	332.44
PK6801400	166-181 x 200	359.24
PK6801500	216-226 x 200	616.64

Materials Chart for Ductile Iron

Component	Materials
Clamp Body	Ductile Iron GJS 400-15 UNI EN 1563
Clamp Coating	PPA 571 ES Blue 536
Bridging Plates	Stainless Steel AISI 304 18.8
Waffle Seal	EDPM APE 55N Shore 53 + or -5 water Reg. 4 approved material
Bolts	High Tensile Steel, Galvanised M12 & M16

Materials Chart for Stainless Steel

Component	Materials
Clamp Shell	Stainless Steel AISI 304 18.8
Clamp Jaws	EN-GJS-400-15 acc. to UNI EN 1563 norms
Waffle Seal	EDPM APE 55N Shore 53 + or -5 water Reg.4 approved material
Bolts	High Tensile Steel, Galvanised M14 (multi bolt)

Threaded

A range of quality BSP threaded fittings made from Polypropylene and rated to 16 bar. Ideal replacement for gunmetal and bronze that will not corrode. We recommend the use of PTFE tape on all threaded fittings (see page 39).

5017 Threaded Socket



Code	d	£ ea
PT050107005	1/2"	3.82
PT050107007	3/4"	5.58
PT050107010	1"	6.94
PT050107013	1 1/4"	7.62
PT050107015	1 1/2"	8.90
PT050107020	2"	19.90
PT050107030	3" (PVC)*	48.40

5067 Threaded Nipple



Code	d	£ ea
PT050607005	1/2"	3.19
PT050607007	3/4"	3.56
PT050607010	1"	4.22
PT050607013	1 1/4"	6.44
PT050607015	1 1/2"	8.43
PT050607020	2"	12.51
PT050607030	3" (PVC)*	37.12

5117 Threaded Reducing Socket



Code	d	£ ea
PT051107007005	3/4" x 1/2"	4.57

5065 Reducing Nipple



Code	d	£ ea
PT050605007005	3/4" x 1/2"	3.56
PT050605010005	1" x 1/2"	4.22
PT050605010007	1" x 3/4"	4.22
PT050605013005	1 1/4" x 1/2"	6.44
PT050605013007	1 1/4" x 3/4"	6.44
PT050605013010	1 1/4" x 1"	6.44
PT050605015005	1 1/2" x 1/2"	8.43
PT050605015007	1 1/2" x 3/4"	8.43
PT050605015010	1 1/2" x 1"	8.43
PT050605015013	1 1/2" x 1 1/4"	8.43
PT050605020005	2" x 1/2"	12.51
PT050605020007	2" x 3/4"	12.51
PT050605020010	2" x 1"	12.51
PT050605020013	2" x 1 1/4"	12.51
PT050605020015	2" x 1 1/2"	12.51

5077 Threaded Cap



Code	d	£ ea
PT050707005	1/2"	2.68
PT050707007	3/4"	2.87
PT050707010	1"	3.89
PT050707013	1 1/4"	4.57
PT050707015	1 1/2"	6.94
PT050707020	2"	9.89

5177 Threaded Plug



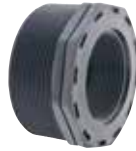
Code	d	£ ea
PT051707003	3/8"	2.54
PT051707005	1/2"	2.68
PT051707007	3/4"	2.87
PT051707010	1"	3.90
PT051707013	1 1/4"	4.57
PT051707015	1 1/2"	6.94
PT051707020	2"	10.94

5047 90° Threaded Tee



Code	d	£ ea
PT050407005	1/2"	5.79
PT050407007	3/4"	6.34
PT050407010	1"	9.35
PT050407013	1 1/4"	13.59
PT050407015	1 1/2"	15.98
PT050407020	2"	17.46

5027 Reducing Bush



Code	d	£ ea
PT050207005003	1/2" x 3/8" (PVC)*	3.67
PT050207007003	3/4" x 3/8" (PVC)*	3.74
PT050207007005	3/4" x 1/2"	3.56
PT050207010005	1" x 1/2"	3.90
PT050207010007	1" x 3/4"	3.90
PT050207013005	1 1/4" x 1/2"	5.03
PT050207013007	1 1/4" x 3/4"	5.03
PT050207013010	1 1/4" x 1"	5.03
PT050207015005	1 1/2" x 1/2"	6.12
PT050207015007	1 1/2" x 3/4"	6.12
PT050207015010	1 1/2" x 1"	6.12
PT050207015013	1 1/2" x 1 1/4"	6.12
PT050207020005	2" x 1/2"	9.49
PT050207020007	2" x 3/4"	9.49
PT050207020010	2" x 1"	9.49
PT050207020013	2" x 1 1/4"	9.49
PT050207020015	2" x 1 1/2"	9.49
PT050207025020	2 1/2" x 2"	12.75
PT050207030010	3" x 1"	20.73
PT050207030013	3" x 1 1/4"	20.73
PT050207030015	3" x 1 1/2"	20.73
PT050207030020	3" x 2"	20.73
PT050207030025	3" x 2 1/2"	20.73
PT050207040020	4" x 2"	20.94
PT050207040030	4" x 3"	20.94

5057 90° Threaded Elbow



Code	d	£ ea
PT050507005	1/2"	4.37
PT050507007	3/4"	5.79
PT050507010	1"	7.20
PT050507013	1 1/4"	10.00
PT050507015	1 1/2"	11.48
PT050507020	2"	14.47

5157 Male/Female Threaded Elbow



Code	d	£ ea
PT051507005	1/2"	4.86
PT051507007	3/4"	6.00
PT051507010	1"	7.43

* PVC items PN10

5169 PP Tank Connector



Code	d	£ ea
PT0516V9005	1/2"	12.19
PT0516V9007	3/4"	14.45
PT0516V9010	1"	16.45
PT0516V9015	1 1/2"	25.87
PT0516V9020	2"	38.59

5168 PVC Tank Connector



Code	d	£ ea
PT05168200	25 x 3/4"	25.67
PT05168300	32 x 1"	37.44

5167 Threaded Riser



Code	d	£ ea
PT051607005	1/2"	5.04
PT051607007005	3/4" x 1/2"	6.64
PT051607007	3/4"	6.64
PT051607010	1"	10.77
PT051607013	1 1/4"	11.28
PT051607015013	1 1/2" x 1 1/4"	12.22
PT051607015	1 1/2"	12.22

5361 Male Hose Adaptor (PVC)



Code	d	£ ea
PT05361005	1/2"BSP x 20mm NB	4.13
PT05361007	3/4"BSP x 25mm NB	5.12
PT05361010	1"BSP x 30mm NB	5.43
PT05361020	2"BSP x 60mm NB	12.15

5362 Female Hose Adaptor (PVC)



Code	d	£ ea
PT05362007	3/4"FEM x 16mm NB	10.64
PT05362010	1"FEM x 20mm NB	10.64

Tools & accessories

7960 Chamfer Tool



Code	d	£ ea
PJ189600063020P	20-63	138.97

60125 Pipe Shears



Code	d	£ ea
PJ53000005	20-32	76.76
PJ53000001	20-63	194.25

60123 Pipe Squeeze Tool



Code	d	£ ea
PJ60121632	16-32	105.47
PJ60123263	32-63	177.09

60124 Water Valve Key

Universal



Code	d	£ ea
PJ60124		80.97



7990 Mechanical Wrench

for PLASSON mechanical fittings



Code	d	£ ea
PJ07990001	16-40	13.16
PJ07990005	40-75	82.75
PJ07990000	63-125	114.32

1099 Pushfit Wrench

for PLASSON pushfit fittings



Code	d	£ ea
PJ10990004P	20-32	50.29
PJ10990002P	40-63	86.82

7992 Strap Wrench

Universal



Code	d	£ ea
PJ792001	20-90	64.62

7991 Tapper Assembly Tool

for use with 16310, 16540 & 49630



See p18-19 & p43

Code	d	£ ea
PJ2920200		93.69

4363 Operating Key

for use with EF Ball Valve 43620



See p25

Code	d	£ ea
PJ4363		148.39

1247 EF Hand Scraper



Code	d	£ ea
PJ53002001	1 1/2"	62.09

6000 PTFE Tape



Code	d	£ ea
PJ07960040		2.02

F80 Silicone Grease Lubricant

(UK Water Reg4)



Code	d	£ ea
PJ8029030	30ml (tub)	14.63
PJ8030500	500ml (spray)	35.26

6101 Protective Tapes



Code	d	£ ea
PJAT500 (aluminium)	50 x 45m	42.64
PJPT50 (petrolatum)	50 x 10m	24.97

4899 EF Wipes Tub



Code	d	£ ea
PJ4899		52.99

4902A Marker Pen



Code	d	£ ea
PJF2040		13.99

60120 Pipe Clip

Metric Pushfix



Code	d	£ ea
PJ60120020	20	0.76
PJ60120025	25	0.79
PJ60120032	32	0.96
PJ60120050	50	1.70
PJ60120063	63	1.90

EF specialist tools

A full range of Specialist EF Tooling is available:

- Clamp kits for saddles and in line welding
- Squeeze off & re rounding tools
- Pipe cutting and core cutting equipment
- Manual and powered scrappers

For more information please contact your local account manager.



Electrofusion

PLASSON electrofusion fittings are specifically designed for reliable, high performance pipe joining and long system life. All fittings are BS EN 12201 and BS EN 1555 approved and are fitted with 4.0mm pins. PLASSON electrofusion fittings can be used with PLASSON's computerised SmartFuse System control box, Fusamatic control boxes, barcode reading and by manual control boxes.

490104 EF Coupler PN16



20mm up to 75mm

90mm up to 400mm

Code	d	£ ea
PF490104020	20	11.07
PF490104025	25	11.07
PF490104032	32	11.07
PF490104040	40	16.58
PF490104050	50	17.08
PF490104063	63	20.52
PF490104075	75	31.49
PF490104090	90	31.79
PF490104110	110	48.72
PF490104125	125	55.82
PF490104140	140	71.59
PF490104160N	160	87.28
PF490104180N	180	103.01
PF490104200N	200	146.16
PF490104225N	225	165.74
PF490104250	250	238.78
PF490104280	280	361.27
PF490104315	315	400.39
PF490104355	355	732.02
PF490103400	400	800.42
PF490103450	450	1,209.88
PF490103500	500	2,289.12
PF490103560	560	3,261.58
PF490103630N	630	5,117.55
PF490103710	710	6,964.94
PF490103800	800*	9,318.43
PF490103900	900*	13,289.38
PF4901031000	1000	23,779.71

4901L4 EF Long Coupler PN16



Code	d	£ ea
PF4901L4032	32	16.23
PF4901L4040	40	19.57
PF4901L4050	50	24.62
PF4901L4063	63	29.08

460104 EF LightFit Coupler PN10



Code	d	£ ea
PF460104040	40	16.58
PF460104050	50	17.08
PF460104063	63	19.09
PF460104075	75	28.95
PF460104090	90	31.24
PF460104110	110	40.03
PF460104125	125	50.00
PF460104140	140	53.84
PF460104160	160	58.78
PF460104180	180	82.39
PF460104200	200	106.48
PF460104225	225	136.57
PF460104250	250	189.78
PF460104280	280	275.91
PF460104315	315	313.87
PF460104355	355	444.40
PF460104400	400	612.81
PF460103450N	450	1,013.71
PF460103500	500	1,896.33
PF460103560N	560	2,714.06
PF460103630N	630	3,923.50
PF460103710N	710	5,354.53
PF460103800N	800*	6,703.44
PF460103900N	900*	8,500.42
PF4601031000	1000	19,316.01
PF4601031200	1200	26,307.85

4601S3 EF Super Lightfit Coupler PN6.4



Code	d	£ ea
PF4601S3500	500	1,407.07
PF4601S3560	560	1,887.87
PF4601S3630	630	2,562.54
PF4601S3710	710	3,486.86
PF4601S3800	800	4,359.30
PF4601S3900	900	7,112.68
PF4601S31000	1000	11,103.86

* PLASSON 800mm and 900mm PN16 and PN10 couplers are 42 volt fittings.

450104 EF Coupler PN25



Code	d	£ ea
PF450104050	50	21.89
PF450104063	63	23.28
PF450104090	90	42.30
PF450104110	110	56.81
PF450104125	125	67.54
PF450104140	140	76.20
PF450104160	160	100.38
PF450104180	180	118.44
PF450104200	200	168.09
PF450104225	225	185.25
PF450104250	250	274.60
PF450104280	280	415.42
PF450104315	315	460.51
PF450103355	355	735.89



491104 EF Reducing Coupler



25 x 20mm up to 110 x 90mm

125 x 90mm up to 180 x 125mm

Code	d x d1	£ ea
PF491104025020	25 x 20	11.12
PF491104032020	32 x 20	11.12
PF491104032025	32 x 25	12.99
PF491104040025	40 x 25	22.79
PF491104040032	40 x 32	22.79
PF491104050025	50 x 25	32.90
PF491104050032	50 x 32	32.90
PF491104050040	50 x 40	32.90
PF491104063032	63 x 32	32.81
PF491104063040	63 x 40	32.81
PF491104063050	63 x 50	32.81
PF491104075063	75 x 63	37.36
PF491104090050	90 x 50	42.19
PF491104090063	90 x 63	42.19
PF491104090075	90 x 75	42.19
PF491104110063	110 x 63	59.34
PF491104110090	110 x 90	59.34
PF491104125090	125 x 90	84.75
PF491104125110	125 x 110	92.59
PF491104160090	160 x 90	142.74
PF491104160110	160 x 110	142.74
PF491104160125	160 x 125	142.74
PF491104180125	180 x 125	156.32

491204 EF End Cap



20mm up to 75mm

90mm up to 315mm

Code	Size d	£ ea
PF491204020	20	19.67
PF491204025	25	21.05
PF491204032	32	23.05
PF491204040	40	26.80
PF491204050	50	39.20
PF491204063	63	44.35
PF491204075	75	81.02
PF491204090	90	91.31
PF491204110	110	131.21
PF491204125	125	147.30
PF491204140	140	168.40
PF491204160	160	221.98
PF491204180	180	289.89
PF491204200	200	352.48
PF491204225	225	371.23
PF491204250	250	446.06
PF491204315	315	1,005.29

490504 EF 90° Elbow



Code	d	£ ea
PF490504020	20	25.87
PF490504025	25	25.87
PF490504032	32	25.87
PF490504040	40	36.96
PF490504050	50	50.73
PF490504063	63	54.06
PF490504075	75	73.28
PF490504090	90	77.15
PF490504110	110	117.65
PF490504125	125	133.08
PF490504140	140	171.85
PF490504160	160	246.89
PF490504180	180	302.82
PF490504200	200	520.17
PF490504225	225	621.37
PF490504250	250	772.35

490604 EF 45° Elbow



Code	d	£ ea
PF490604032	32	24.64
PF490604040	40	35.00
PF490604050	50	40.45
PF490604063	63	53.97
PF490604075	75	73.14
PF490604090	90	80.73
PF490604110	110	119.34
PF490604125	125	133.89
PF490604140	140	171.85
PF490604160	160	246.70
PF490604180	180	304.12
PF490604200	200	520.17
PF490604225	225	621.37
PF490604250	250	772.35

490804 EF 22.5° Elbow

Code	Size d	£ ea
PF490804090	90	69.43
PF490804110	110	88.20
PF490804125	125	129.03
PF490804160	160	227.99
PF490804180	180	302.82

4947C4 EF Adjustable Elbow

Adjustment angle 0° to 24°



Code	d	£ ea
PF4947C4090	90	226.63
PF4947C4110	110	268.24
PF4947C4125	125	332.14
PF4947C4160	160	477.29
PF4947C4180	180	609.70
PF4947C4200	200	831.20
PF4947C4225	225	1,053.46
PF4947C4250	250	1,463.22

4947D4 EF Adjustable Elbow One Sided

Adjustment angle 0° to 12°



Code	d x D1	£ ea
PF4947D4090	90 x 90	210.45
PF4947D4110	110 x 110	228.70
PF4947D4125	125 x 125	265.14
PF4947D4160	160 x 160	412.09
PF4947D4180	180 x 180	491.63
PF4947D4200	200 x 200	660.10
PF4947D4225	225 x 225	836.57
PF4947D4250	250 x 250	1,161.99

491504 EF 90° Duck Foot Elbow



c/w 32mm outlet

Code	d	£ ea
PF491504090	90	192.89
PF4915Q4090032	90 c/w 32mm outlet	198.54

New product

490904 EF 180° Elbow



Code	d	£ ea
PF490904025	25	62.47
PF490904032	32	75.32
PF490904040	40	93.70

492404 EF Two Outlet Tee



Two outlets

Code	d	£ ea
PF492404040025	40 x 25 x 25 x 40	67.54
PF492404040032	40 x 32 x 32 x 40	67.54
PF492404050025	50 x 25 x 25 x 50	79.95
PF492404050032	50 x 32 x 32 x 50	79.95
PF492404063025	63 x 25 x 25 x 63	95.77
PF492404063032	63 x 32 x 32 x 63	95.77
PF492404063040	63 x 40 x 40 x 63	95.77

490404 EF 90° Tee



20mm up to 75mm

90mm up to 250mm

Code	d	£ ea
PF490404020	20 x 20 x 20	24.31
PF490404025	25 x 25 x 25	24.05
PF490404032	32 x 32 x 32	25.87
PF490404040	40 x 40 x 40	40.09
PF490404050	50 x 50 x 50	48.91
PF490404063	63 x 63 x 63	54.94
PF490404075	75 x 75 x 75	82.70
PF490404090	90 x 90 x 90	94.81
PF490404110	110 x 110 x 110	141.78
PF490404125	125 x 125 x 125	182.33
PF490404160	160 x 160 x 160	300.99
PF490404180	180 x 180 x 180	337.08
PF490404200	200 x 200 x 200	626.17
PF490404225	225 x 225 x 225	711.51
PF490404250	250 x 250 x 250	941.88

499404 EF Flanged Tee



Code	d x d1	£ ea
PF499404090080	90 x 80 x 90	250.88
PF499404110080	110 x 80 x 110	284.23
PF499404110100	110 x 100 x 110	297.29
PF499404125080	125 x 80 x 125	309.87
PF499404125100	125 x 100 x 125	323.98
PF499404160080	160 x 80 x 160	496.98
PF499404160100	160 x 100 x 160	525.06
PF499404180080	180 x 80 x 180	606.11
PF499404180100	180 x 100 x 180	620.98
PF499404200080	200 x 80 x 200	1,352.30
PF499404200100	200 x 100 x 200	1,357.59
PF499404225080	225 x 80 x 225	1,472.81
PF499404225100	225 x 100 x 225	1,517.35
PF499404250080	250 x 80 x 250	1,904.11
PF499404250100	250 x 100 x 250	1,948.55

496304 EF Tapping Tee



40mm up to 63mm

90mm up to 180mm

200mm up to 250mm

Code	Size d x d1	£ ea
PF496304040032	40 x 32	86.79
PF496304050032	50 x 32	86.79
PF496304063032N	63 x 32	86.79
PF496304063063	63 x 63	137.99
PF496304090025	90 x 25	86.79
PF496304090032	90 x 32	86.79
PF496304090063	90 x 63	137.99

491404 EF Reducing Tee



20mm up to 75mm

90mm up to 250mm

Code	d	£ ea
PF491404025020	25 x 20 x 25	30.27
PF491404032020	32 x 20 x 32	34.20
PF491404032025	32 x 25 x 32	35.90
PF491404040025	40 x 25 x 40	38.04
PF491404040032	40 x 32 x 40	39.93
PF491404050020	50 x 20 x 50	43.60
PF491404050025	50 x 25 x 50	45.83
PF491404050032	50 x 32 x 50	45.83
PF491404063020	63 x 20 x 63	52.34
PF491404063032	63 x 32 x 63	52.34
PF491404063040	63 x 40 x 63	49.84
PF491404063050	63 x 50 x 63	52.34
PF491404075063	75 x 63 x 75	79.27
PF491404090063	90 x 63 x 90	106.28
PF491404110063	110 x 63 x 110	149.14
PF491404110090	110 x 90 x 110	149.14
PF491404125090	125 x 90 x 125	194.34
PF491404125110	125 x 110 x 125	194.34
PF491404160090	160 x 90 x 160	286.60
PF491404160110	160 x 110 x 160	272.93
PF491404160125	160 x 125 x 160	272.93
PF491404180090	180 x 90 x 180	553.59
PF491404180110	180 x 110 x 180	400.13
PF491404180125	180 x 125 x 180	553.59
PF491404180140	180 x 140 x 180	400.13
PF491404180160	180 x 160 x 180	553.59
PF491404200090	200 x 90 x 200	680.04
PF491404200110	200 x 110 x 200	704.01
PF491404200160	200 x 160 x 200	1,096.24
PF491404225090	225 x 90 x 225	772.64
PF491404225110	225 x 110 x 225	794.64
PF491404225160	225 x 160 x 225	1,308.98
PF491404250090	250 x 90 x 250	1,023.00
PF491404250110	250 x 110 x 250	1,051.19
PF491404250160	250 x 160 x 250	1,678.72

496304 EF Tapping Tee contd.

Code	Size d x d1	£ ea
PF496304110032	110 x 32	86.79
PF496304110063	110 x 63	137.99
PF496304125032	125 x 32	86.79
PF496304125063	125 x 63	137.99
PF496304160032	160 x 32	86.79
PF496304160063	160 x 63	137.99
PF496304180032	180 x 32	119.56
PF496304180063	180 x 63	137.99
PF496304200032	200 x 32	217.70
PF496304200063	200 x 63	217.70
PF496304225032	225 x 32	217.70
PF496304225063	225 x 63	217.70
PF496304250032	250 x 32	217.70
PF496304250063	250 x 63	274.28

7991 Tapper Assembly Tool for use with 496304 see page 38.



492104 EF Male Transition Coupler

(BSPT thread)



Code	Type	d x R	£ ea
PF492104020005	A	20 x 1/2"	50.35
PF492104025007	A	25 x 3/4"	51.91
PF492104032005	A	32 x 1/2"	51.91
PF492104032007	A	32 x 3/4"	51.91
PF492104032010N	B	32 x 1"	51.91
PF492104032013	A	32 x 1 1/4"	65.52
PF492104032015	A	32 x 1 1/2"	70.34
PF492104040010N	B	40 x 1"	62.57
PF492104040013N	B	40 x 1 1/4"	62.57
PF492104040015	A	40 x 1 1/2"	66.29
PF492104040020N	B	40 x 2"	89.95
PF492104050010	A	50 x 1"	70.99
PF492104050013	A	50 x 1 1/4"	72.83
PF492104050015N	B	50 x 1 1/2"	74.96
PF492104050020N	B	50 x 2"	93.61
PF492104063013	A	63 x 1 1/4"	108.81
PF492104063015	A	63 x 1 1/2"	100.40
PF492104063020N	B	63 x 2"	103.35
PF492104075020	A	75 x 2"	149.16
PF492104075025	A	75 x 2 1/2"	149.16

493104 EF Female Transition Coupler

(BSPT thread)



Code	Type	d x Rp	£ ea
PF493104020005	A	20 x 1/2"	46.35
PF493104025007	A	25 x 3/4"	53.87
PF493104032007	A	32 x 3/4"	60.51
PF493104032010N	B	32 x 1"	61.40
PF493104040010	A	40 x 1"	74.79
PF493104040013	A	40 x 1 1/4"	74.79
PF493104040015	A	40 x 1 1/2"	79.16
PF493104050015	A	50 x 1 1/2"	90.99
PF493104050020	A	50 x 2"	105.16
PF493104063015	A	63 x 1 1/2"	104.70
PF493104063020N	B	63 x 2"	114.53

494104 EF Female Free Nut Coupler

(BSPP thread)



Code	d x G	£ ea
PF494104025007	25 x 3/4"	66.00
PF494104032010	32 x 1"	77.63
PF494104050010	50 x 1"	107.54
PF494104063020	63 x 2"	136.78

492107 EF Weldable Transition

Male Adaptor

(BSPT thread)



Code	Type	d x R	£ ea
PF492107020005	A	20 x 1/2"	35.10
PF492107025007	A	25 x 3/4"	41.44
PF492107032007	A	32 x 3/4"	50.93
PF492107032010N	B	32 x 1"	50.93
PF492107040010	A	40 x 1"	65.44
PF492107040013	A	40 x 1 1/4"	63.85
PF492107040015	A	40 x 1 1/2"	68.95
PF492107050010	A	50 x 1"	73.18
PF492107050015N	B	50 x 1 1/2"	70.03
PF492107050020	A	50 x 2"	81.79
PF492107063015	A	63 x 1 1/2"	92.83
PF492107063020N	B	63 x 2"	90.94
PF492107075025	A	75 x 2 1/2"	130.75

493107 EF Weldable Transition

Female Adaptor

(BSPT thread)



Code	Type	d x Rp	£ ea
PF493107020005	A	20 x 1/2"	60.75
PF493107025007	A	25 x 3/4"	68.92
PF493107032007	A	32 x 3/4"	80.26
PF493107032010N	B	32 x 1"	89.77
PF493107040013	A	40 x 1 1/4"	79.83
PF493107050015	A	50 x 1 1/2"	127.25
PF493107050020	A	50 x 2"	127.25
PF493107063015	A	63 x 1 1/2"	127.85
PF493107063020N	B	63 x 2"	134.25

PLASSON® PA Threads

Coming soon, our high-performance glass reinforced PA (Polyamide) threaded fittings.

Providing a durable and robust lead free connection to replace metal threads, whilst still providing exceptional strength and resilience for every piping application.

- Corrosion resistant
- Fitting can be rotated even after assembly
- Durable, reliable, and lightweight
- PN16 pressure rating



Specialist EF Tooling

Saddle Pressing and Clamping Tools for Water & Gas

LD Saddle ClampKit

for pipes 280mm - 1200mm

Saddles with outlets 90mm - 160mm spigot, 80mm - 150mm flange

Code	Type	size
PQ447010031	LD	90-160mm



XL Saddle Strap & Ratchet set

for pipes 400mm - 1200mm

Including torque wrench

Saddles with outlets 180mm - 400mm spigots, 200mm - 400mm flange

Code	Type	size
PQ44701009	XL & XXL	180-400mm



XL Clamping Plate for pipes 400mm - 1200mm

Code	Type	size
PQ24701200	XL	180/200mm
PQ24701250	XL	225/250mm
PQ24701315	XL	280/315mm
PQ24701400	XL	355/400mm



XL Pressing Tool for pipes 450mm - 1200mm (Spigot)

Code	Type	size
PQ24701074	Spigot	280mm
PQ24701062	Spigot	315mm
PQ24701073	Spigot	355mm
PQ24701060	Spigot	400mm



XL Pressing Tool for pipes 450mm - 1200mm (Flange)

Code	Type	size
PQ24701072	Flange	200mm
PQ24701063	Flange	250mm
PQ24701064	Flange	300mm
PQ24701065	Flange	400mm

Core Cutters (for PE pipe)

Code	Drill size	Saddle size
PQ14704P071	Core drill 71mm	D90/DN80
PQ14704P087	Core drill 87mm	D110
PQ14704P099	Core drill 99mm	D125/DN100
PQ14704P127	Core drill 127mm	D160/DN150
PQ14704P143	Core drill 143mm	D180
PQ14704P159	Core drill 159mm	D200/DN200
PQ14704P179	Core drill 179mm	D225
PQ14704P199	Core drill 199mm	D250/DN250
PQ14704P233	Core drill 223mm	D280
PQ14704P251	Core drill 251mm	D315/DN300
PQ14704P283	Core drill 283mm	D355
PQ14704P319	Core drill 319mm	D400/DN400

Core Cutter Adaptors

Code	Type
PQ14702004	Core Cutter Adapter for SDS-plus
PQ14702002	Core Cutter Adapter for SDS-MAX
PQ24704002	Pilot Drill 14mm with core 260mm



Specialist EF Saddles

PLASSON saddles are uniquely designed to allow cost effective connections and branches from large diameter PE pipework. Simple and easy to install with confidence and suitable for a large range of SDR Pipes, (please check website for suitability at each size) manufactured to BS EN12201 and EN1555 makes them the perfect solution for both water and gas applications.

Simple Clamping Systems

Our unique clamping systems have been engineered to ensure PLASSON saddles are quick and easy to use.

Our OneBolt system for saddles to suit pipes up to 250mm remove the need for any specialist equipment.

Our LD and XL saddles use a unique and simple clamping system. Simply pick the correct saddle plate and attach this to the tension straps around the pipework. Tighten until the indicators touch, signals that the saddle is secured and ready for electrofusion.

Embedded heating wires ensure large weld zone

All PLASSON saddles are designed with large weld zones to give confidence to the installer. The embedded wires overlap the cut out area to ensure the maximum surface weld area is created.

Built-in test point

Each saddle has an injection moulded test point built into the body of the outlet. The test point provides a quick and simple way to test weld integrity of the saddle prior to drilling.

The connection to a standard pressure test pump is by 16mm push-fit fitting. Ensure 3x cooling period prior to testing and drilling.

Maximum Bore

The full bore of the saddle is opened by using the PLASSON core drill. All saddles can be welded in place on pressurised (live) or de-pressurised mains (dead).



Quality & Approvals

Pressure rated PN16 (water), PE100 SDR11 (gas).
PLASSON EF fittings are suitable for pipelines SDR7.4 to SDR41.
(Please check individual fitting for suitability)

PLASSON Electrofusion fittings are certified to EN 1555 and EN 12201, and meet with Water Supply (Water Fittings) Regulations 1999, section 4.

Underclamp Saddles (UC)

4958 Underclamp Spigot Saddles

Pipe size 63mm - 250mm

Spigot outlet up to 90mm



Code	Type	d x d1	ea
PF495804063032	UC	63 x 32	95.84
PF495804090032	UC	90 x 32	95.84
PF495804110032	UC	110 x 32	95.84
PF495804125032	UC	125 x 32	105.90
PF495804140032	UC	140 x 32	133.43
PF495804160032	UC	160 x 32	148.72
PF495804180032	UC	180 x 32	131.52
PF495804110040	UC	110 x 40	95.84
PF495804110050	UC	110 x 50	95.84
PF495804125050	UC	125 x 50	105.90
PF495804140050	UC	140 x 50	133.43
PF495804160050	UC	160 x 50	148.72
PF495804180050	UC	180 x 50	132.90
PF495804063063	UC	63 x 63	95.84
PF495804090063	UC	90 x 63	95.84
PF495804110063	UC	110 x 63	97.42
PF495804125063	UC	125 x 63	105.90
PF495804140063	UC	140 x 63	133.43
PF495804160063	UC	160 x 63	117.74
PF495804180063	UC	180 x 63	131.52
PF495804200063	UC	200 x 63	143.10
PF495804225063	UC	225 x 63	143.10
PF495804250063	UC	250 x 63	146.59
PF495804090090	UC	90 x 90	139.50
PF495804110090	UC	110 x 90	139.50

493804 EF Transition Saddles

Pipe size 63mm - 800mm

Threaded outlets 1¼" to 2"



Type UC

63mm up to 180mm
Outlets 1¼" and 1½"



Type UC

90mm up to 250mm
Outlet 2"



Type M

Multi 2"

Code	Type	d x G	£ ea
PF493804063013	UC	63 x 1 ¼"	105.84
PF493804090015	UC	90 x 1 ½"	140.09
PF493804090020	UC	90 x 2"	168.53
PF493804110015	UC	110 x 1 ½"	148.32
PF493804110020	UC	110 x 2"	186.18
PF493804125015	UC	125 x 1 ½"	194.55
PF493804125020	UC	125 x 2"	198.85
PF493804160020	UC	160 x 2"	221.82
PF493804180020	UC	180 x 2"	192.73
PF493804200020	UC	200 x 2"	244.22
PF493804225020	UC	225 x 2"	272.35
PF493804250020	UC	250 x 2"	251.75
PF493804400020	M	280-400 x 2"	628.27
PF493804710020	M	450-800 x 2"	696.34

Sensor Saddles

Sensor saddle provides a simple and reliable solution for providing a through wall connection into PE pipes.

- Designed for instrumentation connections
- Permanent welded fixing
- PN16 pressure rating
- Suitable for SDR7.4 to SDR26 pipes.
- Brass and stainless versions available
- Can be installed on live pipework

4938 Sensor Saddles



Brass thread



Stainless thread

Code	Type	d x Rp**	Voltage	£ ea
PF493803400005	Brass	110-400 x ½"	30v	277.51
PF493853400005	S'steel	110-400 x ½"	30v	321.18
PF493803900005	Brass	450-1200 x ½"	31v	497.41
PF493853900005	S'steel	450-1200 x ½"	31v	542.45
PF493803400007	Brass	110-400 x ¾"	31v	293.70
PF493853400007	S'steel	110-400 x ¾"	31v	331.04
PF493803900007	Brass	450-1200 x ¾"	30v	519.39
PF493853900007	S'steel	450-1200 x ¾"	30v	558.16
PF493803400010	Brass	110-400 x 1"	30v	319.04
PF493853400010	S'steel	110-400 x 1"	30v	362.95
PF493803900010	Brass	450-1200 x 1"	31v	547.01
PF493853900010	S'steel	450-1200 x 1"	31v	592.41



One Bolt Saddles (OB) For pipe sizes 125 - 250mm

90mm - 160mm spigot outlets

80mm - 150mm flanged with PN16 coated backing rings



4958 Spigot Saddles

90mm Spigot (di 73mm)

Code	Type	d x d1	£ ea
PF4958X4125090T	OB	125 x 90	374.73
PF4958X4140090T	OB	140 x 90	386.53
PF4958X4160090T	OB	160 x 90	406.82
PF4958X4180090T	OB	180 x 90	428.34
PF4958X4200090T	OB	200 x 90	518.03
PF4958X4225090T	OB	225 x 90	561.23
PF4958X4250090T	OB	250 x 90	604.92

110mm Spigot (di 89mm)

Code	Type	d x d1	£ ea
PF4958X4125110T	OB	125 x 110	395.09
PF4958X4140110T	OB	140 x 110	406.97
PF4958X4160110T	OB	160 x 110	427.41
PF4958X4180110T	OB	180 x 110	448.86
PF4958X4200110T	OB	200 x 110	538.55
PF4958X4225110T	OB	225 x 110	581.60
PF4958X4250110T	OB	250 x 110	604.92

125mm Spigot (di 102mm)

Code	Type	d x d1	£ ea
PF4958X4180125T	OB	180 x 125	502.46
PF4958X4200125T	OB	200 x 125	563.01
PF4958X4225125T	OB	225 x 125	607.95
PF4958X4250125T	OB	250 x 125	621.18

160mm Spigot (di 131mm)

Code	Type	d x d1	£ ea
PF4958X4180160T	OB	180 x 160	479.50
PF4958X4200160T	OB	200 x 160	577.99
PF4958X4225160T	OB	225 x 160	680.44
PF4958X4250160T	OB	250 x 160	689.54

4959 Flanged Saddles

80mm Flange (di 73mm)

Code	Type	d x DN	£ ea
PF4959X4125080T	OB	125 x 80	480.69
PF4959X4160080T	OB	160 x 80	503.13
PF4959X4180080T	OB	180 x 80	518.14
PF4959X4200080T	OB	200 x 80	581.02
PF4959X4225080T	OB	225 x 80	611.23
PF4959X4250080T	OB	250 x 80	1,090.12

100mm Flange (di 89mm)

Code	Type	d x DN	£ ea
PF4959X4125100T	OB	125 x 100	828.97
PF4959X4160100T	OB	160 x 100	861.29
PF4959X4180100T	OB	180 x 100	882.66
PF4959X4200100T	OB	200 x 100	972.30
PF4959X4225100T	OB	225 x 100	1,015.45
PF4959X4250100T	OB	250 x 100	1,105.24

100mm Flange (di 102mm)

Code	Type	d x DN	£ ea

150mm Flange (di 131mm)

Code	Type	d x DN	£ ea
PF4959X4225150T	OB	225 x 150	1,142.11
PF4959X4250150T	OB	250 x 150	1,142.11



Large Diameter Saddles (LD) For pipe sizes 280 - 1200mm

90mm - 160mm spigot outlets

80mm - 150mm flanged with PN16 coated backing rings

Pipe sizes 280mm - 400mm and 450mm - 800mm use multi-size type saddle.

Pipe sizes 900mm - 1200mm use dedicated type saddle.

LD saddles require a PLASSON LD fitting kit to be used for installation.



Outlets 90-160mm spigot & 80-150mm flanged

4958 Spigot Saddles

90mm Spigot (di 73mm)

Code	Type	d x d1	£ ea
PF495804280090	UC	280 x 90	338.39
PF495804315090	UC	315 x 90	439.14
PF495804400090T	M LD	280-400 x 90	596.64
PF495804710090T	M LD	450-800 x 90	647.65

110mm Spigot (di 89mm)

Code	Type	d x d1	£ ea
PF495804400110T	M LD	280-400 x 110	741.07
PF495804710110T	M LD	450-800 x 110	814.08
PF495803900110T	LD	900 x 110	5,049.41
PF4958031000110T	LD	1000 x 110	6,564.19
PF4958031200110T	LD	1200 x 110	7,548.46

125mm Spigot (di 102mm)

Code	Type	d x d1	£ ea
PF495804400125T	M LD	280-400 x 125	898.09
PF495804710125T	M LD	450-800 x 125	941.37
PF495803900125T	LD	900 x 125	5,183.56
PF4958031000125T	LD	1000 x 125	6,892.28
PF4958031200125T	LD	1200 x 125	7,925.69

160mm Spigot (di 131mm)

Code	Type	d x d1	£ ea
PF495804400160T	M LD	280-400 x 160	1,724.21
PF495804710160T	M LD	450-800 x 160	1,906.03
PF495803900160T	LD	900 x 160	5,443.23
PF4958031000160T	LD	1000 x 160	7,236.80
PF4958031200160T	LD	1200 x 160	8,322.05

4959 Flanged Saddles

80mm Flange (di 73mm)

Code	Type	d x DN	£ ea
PF495904400080T	M LD	280-400 x 80	915.93
PF495904710080T	M LD	450-800 x 80	959.49

100mm Flange (di 89mm)

Code	Type	d x DN	£ ea
Made with 125mm spigot saddle			

100mm Flange (di 102mm)

Code	Type	d x DN	£ ea
PF495904400100T	M LD	280-400 x 100	1,174.90
PF495904710100T	M LD	450-800 x 100	1,247.93
PF495903900100T	LD	900 x 100	5,483.65
PF4959031000100T	LD	1000 x 100	7,200.85
PF4959031200100T	LD	1200 x 100	8,234.26

150mm Flange (di 131mm)

Code	Type	d x DN	£ ea
PF495904400150T	M LD	280-400 x 150	2,186.30
PF495904710150T	M LD	450-800 x 150	2,368.13
PF495903900150T	LD	900 x 150	5,904.78
PF4959031000150T	LD	1000 x 150	7,698.35
PF4959031200150T	LD	1200 x 150	8,783.59



XL Diameter Saddles (XL)

Available for all pipe sizes from 400mm to 1200mm with an range of spigot outlets 180mm - 400mm and flanged outlets from 200mm - 400mm with PN16 coated backing rings.

XL saddles require a PLASSON XL strap set, the appropriate sized clamp plate, rounding ring and/or pressing tool to be used for installation.

PLASSON saddles are suitable for gas and water applications drilling both under pressure and dead.



4958 Spigot Saddles

180mm Spigot (di 147mm)

Code	Type	d x d1	£ ea
PF495803400180T	XL	400 x 180	3,668.64
PF495803450180T	XL	450 x 180	5,544.71
PF495803500180T	XL	500 x 180	6,796.93
PF495803560180T	XL	560 x 180	7,107.82
PF495803630180T	XL	630 x 180	7,107.82
PF495803710180T	XL	710 x 180	8,262.42
PF495803800180T	XL	800 x 180	9,994.65
PF495803900180T	XL	900 x 180	10,216.67
PF4958031000180T	XL	1000 x 180	11,726.59
PF4958031200180T	XL	1200 x 180	13,503.58

225mm Spigot (di 184mm)

Code	Type	d x d1	£ ea
PF495803450225TN	M XL	400-450 x 225	3,755.39
PF495803630225TN	M XL	500-630 x 225	4,049.77
PF495803710225T	XL	710 x 225	9,434.76
PF495803800225T	XL	800 x 225	9,994.65
PF495803900225T	XL	900 x 225	10,216.67
PF4958031000225T	XL	1000 x 225	11,726.59
PF4958031200225T	XL	1200 x 225	13,503.58

280mm Spigot (di 230mm)

Code	Type	d x d1	£ ea
PF495803450280T	XL	450 x 280	8,173.63
PF495803500280T	XL	500 x 280	7,736.46
PF495803560280T	XL	560 x 280	8,835.36
PF495803630280T	XL	630 x 280	8,835.36
PF495803710280T	XL	710 x 280	10,236.80
PF495803800280T	XL	800 x 280	10,843.99
PF495803900280T	XL	900 x 280	7,879.87
PF4958031000280T	XL	1000 x 280	9,061.46
PF4958031200280T	XL	1200 x 280	10,420.56

355mm Spigot (di 292mm)

Code	Type	d x d1	£ ea
PF495803500355T	XL	500 x 355	11,831.35
PF495803560355T	XL	560 x 355	14,214.14
PF495803630355T	XL	630 x 355	14,214.14
PF495803710355T	XL	710 x 355	14,128.05
PF495803800355T	XL	800 x 355	14,871.40
PF495803900355T	XL	900 x 355	16,358.17
PF4958031000355T	XL	1000 x 355	18,819.34
PF4958031200355T	XL	1200 x 355	21,640.53

200mm Spigot (di 164mm)

Code	Type	d x d1	£ ea
PF495803450200TN	M XL	400-450 x 200	3,411.10
PF495803630200TN	M XL	500-630 x 200	4,016.44
PF495803710200T	XL	710 x 200	9,434.76
PF495803800200T	XL	800 x 200	9,994.65
PF495803900200T	XL	900 x 200	10,216.67
PF4958031000200T	XL	1000 x 200	11,726.59
PF4958031200200T	XL	1200 x 200	13,503.58

250mm Spigot (di 205mm)

Code	Type	d x d1	£ ea
PF495803355250T	M XL	315-355 x 250	2,878.66
PF495803450250TN	M XL	400-450 x 250	3,968.01
PF495803630250T	M XL	500-630 x 250	4,070.83
PF495803710250T	XL	710 x 250	9,434.76
PF495803800250T	XL	800 x 250	9,994.65
PF495803900250T	XL	900 x 250	7,262.65
PF4958031000250T	XL	1000 x 250	8,351.75
PF4958031200250T	XL	1200 x 250	9,604.16

315mm Spigot (di 259mm)

Code	Type	d x d1	£ ea
PF495803450315T	XL	450 x 315	8,617.74
PF495803500315T	XL	500 x 315	9,101.35
PF495803560315T	XL	560 x 315	10,394.33
PF495803630315T	XL	630 x 315	10,394.33
PF495803710315T	XL	710 x 315	10,873.93
PF495803800315T	XL	800 x 315	11,433.44
PF495803900315T	XL	900 x 315	12,793.09
PF4958031000315T	XL	1000 x 315	14,711.48
PF4958031200315T	XL	1200 x 315	16,917.69

400mm Spigot (di 329mm)

Code	Type	d x d1	£ ea
PF495803560400T	XL	560 x 400	15,102.36
PF495803630400T	XL	630 x 400	15,102.36
PF495803710400T	XL	710 x 400	15,191.08
PF495803800400T	XL	800 x 400	15,990.51
PF495803900400T	XL	900 x 400	17,589.22
PF4958031000400T	XL	1000 x 400	20,234.91
PF4958031200400T	XL	1200 x 400	23,268.48

4959 Flanged Saddles

200mm Flange (di 184mm)

Code	Type	d x DN	£ ea
PF495903450200TN	M XL	400-450 x 200	3,882.83
PF495903630200TN	M XL	500-630 x 200	4,489.12
PF495903710200T	XL	710 x 200	9,906.49
PF495903800200T	XL	800 x 200	10,466.38
PF495903900200T	XL	900 x 200	10,688.40
PF4959031000200T	XL	1000 x 200	12,199.01
PF4959031200200T	XL	1200 x 200	13,975.31

300mm Flange (di 257mm)

Code	Type	d x DN	£ ea
PF495903355300T	M XL	315-355 x 300	5,399.79
PF495903450300T	XL	450 x 300	9,461.14
PF495903500300T	XL	500 x 300	9,945.05
PF495903560300T	XL	560 x 300	11,237.73
PF495903630300T	XL	630 x 300	11,237.73
PF495903710300T	XL	710 x 300	11,717.33
PF495903800300T	XL	800 x 300	12,277.55
PF495903900300T	XL	900 x 300	13,636.49
PF4959031000300T	XL	1000 x 300	15,554.88
PF4959031200300T	XL	1200 x 300	17,761.09

250mm Flange (di 204mm)

Code	Type	d x DN	£ ea
PF495903355250T	M XL	315-355 x 250	3,647.23
PF495903450250TN	M XL	400-450 x 250	4,650.11
PF495903630250T	M XL	500-630 x 250	4,840.35
PF495903710250T	XL	710 x 250	10,203.63
PF495903800250T	XL	800 x 250	10,763.23
PF495903900250T	XL	900 x 250	8,031.22
PF4959031000250T	XL	1000 x 250	9,120.32
PF4959031200250T	XL	1200 x 250	10,373.04

400mm Flange (di 327mm)

Code	Type	d x DN	£ ea
PF495903560400T	XL	560 x 400	16,985.96
PF495903630400T	XL	630 x 400	17,025.30
PF495903710400T	XL	710 x 400	17,074.67
PF495903800400T	XL	800 x 400	18,122.81
PF495903900400T	XL	900 x 400	19,480.76
PF4959031000400T	XL	1000 x 400	22,109.64
PF4959031200400T	XL	1200 x 400	24,869.73



Flex Restraint

The restraint is a flexible bar, which is fused to the pipe by electrofusion to create a welded shoulder that can restrain the axial movement of pipes in various applications:

- Anchoring the pipe to a concrete wall such as a manhole or tank.
- Blocking pipe movement after slip-lining.

49009 EF Flex Restraint



99 - no bolt hole

98 - with bolt holes

Code	Size	£ ea
PF49009999	140-1600	262.51
PF49009998	160-1600	278.20

Repair Saddle

The repair saddle is a simple and efficient way to repair PE pipework. The repair saddle fits all 250mm to 900mm pipe.

The saddle can cover and repair damaged lengths of 70mm & 230mm. Suitable for PE pipes with a wall thickness of 14.7mm and above.

4952 Repair Saddle



Type R

Repair Saddle	Type	d	Damage length	£ ea
PF495204900070	R	250 - 900	70	1,742.57
PF495203900230	R	400 - 900	230	3,422.87

Spigot fittings

Long Spigot Fittings

PE100 Fittings with long spigots SDR11/17 black

Injection moulded, for butt-welding and electrofusion socket welding.

Material

PE100, black, UK Water Reg4 approved.

Geometric Properties

Outside diameter and wall thickness according to EN 1555 and EN 12201. Tolerances of z-sizes depend on the dimension. Up to d/D 160 = +/- 3 mm and from d/D 180 = +/- 10 mm.

Type

Suitable for butt-welding and electrofusion socket welding.



Stub Flange Adaptor Long

*	SDR11 code	D (mm)	£ ea
*	PS233307F015	25	5.56
*	PS233308F015	32	5.66
*	PS233309F015	40	7.72
*	PS233310F015	50	8.34
*	PS233311F015	63	9.78
*	PS233312F015	75	12.34
*	PS233313F015	90	16.26
*	PS233314F015	110	20.36
*	PS233315F015	125	25.10
*	PS233316F015	140	32.30
*	PS233317F015	160	36.01
*	PS233318F015	180	56.81
*	PS233319F015	200	64.92
*	PS233320F015	225	69.76
*	PS233321F015	250	146.81
*	PS233322F015	280	193.41
*	PS233323F015	315	244.40
*	PS233324F015	355	408.73
	PS233325F015	400	968.67
	PS233326F015	450	1,733.26
	PS233327F015	500	1,963.75
	PS233328F035	560	2,489.25
	PS233329F015	630	3,698.23

*	SDR17 code	D (mm)	£ ea
*	PS233411F015	63	9.98
*	PS233412F015	75	12.55
*	PS233413F015	90	16.26
*	PS233414F015	110	20.17
*	PS233415F015	125	25.10
*	PS233416F015	140	32.51
*	PS233417F015	160	36.41
*	PS233418F015	180	57.21
*	PS233419F015	200	64.40
*	PS233420F015	225	69.76
*	PS233421F015	250	111.53
*	PS233422F015	280	174.60
*	PS233423F015	315	228.18
*	PS233424F015	355	348.47
	PS233425F015	400	614.79
*	PS233426F015	450	1,609.12
	PS233427F015	500	1,632.48
	PS233428F035	560	1,877.97
	PS233429F015	630	2,244.72

490209 Full Face Flange

90 SDR11

*	Code	d	£ ea
*	PF490209090	90	76.68



Backing Rings:

The galvanised backing rings 63mm to 315mm have been replaced by epoxy coated as shown below. Please note, new codes for the complete range.

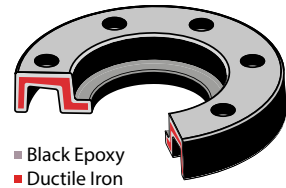
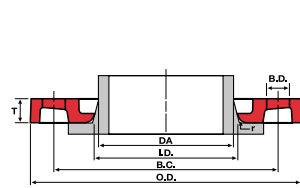
Backing Rings PN10/16 32-315

- Epoxy Coated



* PN10/16 Code	D (mm)	£ ea
PS60030100	D32 DN25 (Galv)	30.15
PS60050100	D50 DN40 (Galv)	33.69
PS60050100DFE	D63 DN50	34.62
PS60070100DFE	D75 DN65	45.63
PS60080100DFE	D90 DN80	51.45
PS60110100DFE	D110 DN100	54.22
PS60120100DFE	D125 DN100	54.22
PS60140100DFE	D140 DN125	89.37
PS60160100DFE	D160 DN150	92.48
PS60180100DFE	D180 DN150	92.48
PS60200100DFE	D200 DN200	150.18
PS60220100DFE	D225 DN200	150.18
PS60250100DFE	D250 DN250	261.20
PS60280100DFE	D280 DN250	261.20
PS60300100DFE	D315 DN300	424.82

- Black epoxy coated DI backing rings
- For use on PE flanges
- Drilled to ISO/DIN 2501
- Drilled PN 16 EN1092



Backing Rings PN10/16 20-180

- Polypropylene Encapsulated

* PN10/16 code	D (mm)	£ ea
PS914106E135	D20 DN15	38.11
PS914107E115	D25 DN20	26.05
PS914108E115	D32 DN25	35.77
PS914109E115	D40 DN32	39.29
PS914110E115	D50 DN40	45.42
PS914111E115	D63 DN50	47.18
PS914112E115	D75 DN65	53.20
PS914313E115	D90 DN80	56.82
PS914314E115	D110 DN100	68.31
PS914315E115	D125 DN100	68.31
PS914316E115	D140 DN125	86.28
PS914317E115	D160 DN150	106.22
PS914318E115	D180 DN150	106.22

Backing Rings PN16 200-400

- Polypropylene Encapsulated

* PN16 code	D (mm)	£ ea
PS914319E325	D200 DN200	203.27
PS914320E325	D225 DN200	203.27
PS914321E325	D250 DN250	286.56
PS914322E325	D280 DN250	308.78
PS914323E325	D315 DN300	364.64
PS914324E325	D355 DN350	721.18
PS914325E325	D400 DN400	848.29

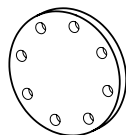
Backing Rings PN10 200-630

- Polypropylene Encapsulated

* PN10 code	D (mm)	£ ea
PS914319E215	D200 DN200	148.85
PS914320E215	D225 DN200	152.67
PS914321E215	D250 DN250	244.63
PS914322E215	D280 DN250	230.45
PS914323E215	D315 DN300	303.92
PS914324E215	D355 DN350	636.72
PS914325E215	D400 DN400	712.15
PS914326E235	D450 DN500	1,880.47
PS914327E235	D500 DN500	1,880.47
PS914328E235	D560 DN600	3,226.77
PS914329E235	D630 DN600	3,226.77

Blind flange PN10/16 25-180

- Polypropylene Encapsulated



* PN10/16 code	D (mm)	£ ea
PS914407E135	25	218.28
PS914408E135	32	223.88
PS914409E135	40	231.09
PS914410E135	50	271.60
PS914411E135	63	306.15
PS914412E135	75	345.08
PS914413E135	90	373.80
PS914414E135	110/125	471.46
PS914416E135	140	624.31
PS914417E135	160/180	844.70

Blind flange PN10 200-400

- Polypropylene Encapsulated

* PN10 code	D (mm)	£ ea
PS914419E235	200/225	895.85
PS914421E235	250/280	1,146.85
PS914423E235	315	1,660.68
PS914424E235	355	3,441.28
PS914425E235	400	3,781.69

* Stocked item

Spigot Reducer Long



*	SDR11 code	D (mm)	£ ea
	PS2323232015	315-225	485.46
	PS2323232115	315-250	497.98
	PS2323232215	315-280	497.98
*	PS2323242115	355-250	536.71
	PS2323242215	355-280	918.72
*	PS2323242315	355-315	867.40
	PS2323252215	400-280	1,298.38
	PS2323252315	400-315	1,320.03
	PS2323252415	400-355	1,288.71
	PS2323262315	450-315	1,874.83
	PS2323262415	450-355	2,458.47
	PS2323262515	450-400	2,446.49
	PS2323272415	500-355	2,446.49
	PS2323272515	500-400	3,362.31
	PS2323272615	500-450	3,001.10
	PS2323292415	630-355	4,047.01
	PS2323292515	630-400	4,296.30
	PS2323292615	630-450	4,296.30
	PS2323292715	630-500	4,046.97

*	SDR17 code	D (mm)	£ ea
*	PS2324232015	315-225	423.67
*	PS2324232115	315-250	537.89
*	PS2324232215	315-280	591.55
*	PS2324242115	355-250	799.17
	PS2324242215	355-280	860.26
*	PS2324242315	355-315	827.50
	PS2324252215	400-280	1,069.10
	PS2324252315	400-315	1,123.15
*	PS2324252415	400-355	1,258.05
*	PS2324262315	450-315	2,035.53
*	PS2324262415	450-355	1,798.60
	PS2324262515	450-400	1,889.67
	PS2324272415	500-355	2,641.20
	PS2324272515	500-400	2,332.91
	PS2324272615	500-450	2,095.06
	PS2324292415	630-355	3,995.36
	PS2324292515	630-400	3,995.36
	PS2324292615	630-450	3,995.36
	PS2324292715	630-500	3,724.09

Spigot End Cap Long



*	SDR11 code	D (mm)	£ ea
	PS2443070015	25	5.28
*	PS2443080015	32	5.28
	PS2443090015	40	6.00
*	PS2443100015	50	7.34
*	PS2443110015	63	12.95
*	PS2443120015	75	26.00
*	PS2443130015	90	31.59
*	PS2443140015	110	41.66
*	PS2443150015	125	48.86
*	PS2443160015	140	64.08
*	PS2443170015	160	67.60
*	PS2443180015	180	92.90
*	PS2443190015	200	116.05
*	PS2443200015	225	139.09
	PS2443210015	250	194.28
*	PS2443220015	280	275.24
	PS2443230015	315	373.73
	PS2443240015	355	550.40
	PS2443250015	400	971.47
	PS2443260015	450	1,355.58
	PS2443270015	500	1,754.19
	PS2443290015	630	3,249.12

*	SDR17 code	D (mm)	£ ea
*	PS2444110015	63	12.24
	PS2444120015	75	24.37
	PS2444130015	90	27.58
*	PS2444140015	110	37.18
	PS2444150015	125	44.20
	PS2444160015	140	55.07
*	PS2444170015	160	60.29
	PS2444180015	180	83.13
	PS2444190015	200	103.62
	PS2444200015	225	123.67
*	PS2444210015	250	167.34
	PS2444220015	280	260.42
*	PS2444230015	315	348.47
*	PS2444240015	355	550.40
	PS2444250015	400	861.74
	PS2444260015	450	903.17
	PS2444270015	500	1,298.31
	PS2444290015	630	2,564.56

* Stocked item

Spigot Elbow 90 Long



*	SDR11 code	D (mm)	£ ea
	PS2413079015	25	5.29
*	PS2413089015	32	5.29
*	PS2413099015	40	6.03
*	PS2413109015	50	10.79
*	PS2413119015	63	17.69
*	PS2413129015	75	25.92
*	PS2413139015	90	27.87
*	PS2413149015	110	46.80
	PS2413159015	125	70.80
	PS2413169015	140	80.85
*	PS2413179015	160	96.78
*	PS2413189015	180	158.75
	PS2413199015	200	180.86
*	PS2413209015	225	240.20
*	PS2413219015	250	403.88
*	PS2413229015	280	649.83
*	PS2413239015	315	817.99
	PS2413249015	355	1,708.13
	PS2413259015	400	2,425.87
	PS2413269015	450	3,673.95
	PS2413279015	500	4,791.47

*	SDR17 code	D (mm)	£ ea
	PS2414119015	63	17.43
	PS2414129015	75	25.11
*	PS2414139015	90	28.10
	PS2414149015	110	45.95
	PS2414159015	125	66.27
	PS2414169015	140	81.60
*	PS2414179015	160	98.97
*	PS2414189015	180	118.30
	PS2414199015	200	163.41
*	PS2414209015	225	185.30
*	PS2414219015	250	344.91
*	PS2414229015	280	521.14
*	PS2414239015	315	651.84
*	PS2414249015	355	1,283.33
	PS2414259015	400	1,720.64
	PS2414269015	450	2,608.97
	PS2414279015	500	3,632.89

Spigot Elbow 45 Long



*	SDR11 code	D (mm)	£ ea
	PS2413074515	25	5.28
*	PS2413084515	32	5.28
*	PS2413094515	40	6.03
	PS2413104515	50	10.79
*	PS2413114515	63	17.97
*	PS2413124515	75	26.65
*	PS2413134515	90	27.93
	PS2413144515	110	46.80
	PS2413154515	125	70.80
	PS2413164515	140	77.79
	PS2413174515	160	103.62
*	PS2413184515	180	124.62
	PS2413194515	200	161.94
	PS2413204515	225	196.56
*	PS2413214515	250	402.21
*	PS2413224515	280	614.06
	PS2413234515	315	760.70
	PS2413244515	355	1,283.33
	PS2413254515	400	1,720.64
	PS2413264515	450	2,608.97
	PS2413274515	500	3,462.22

*	SDR17 code	D (mm)	£ ea
	PS2414114515	63	16.78
	PS2414124515	75	27.44
*	PS2414134515	90	27.17
	PS2414144515	110	45.88
	PS2414154515	125	63.07
	PS2414164515	140	77.28
*	PS2414174515	160	97.95
	PS2414184515	180	107.14
	PS2414194515	200	146.71
	PS2414204515	225	175.89
*	PS2414214515	250	329.33
	PS2414224515	280	508.16
*	PS2414234515	315	651.84
*	PS2414244515	355	613.91
	PS2414254515	400	761.50
	PS2414264515	450	1,804.58
	PS2414274515	500	2,359.63

* Stocked item

Spigot Red Tee Long



*	SDR11 code	D (mm)	£ ea
*	PS2523110815	63-32	25.56
*	PS2523131135	90-63	56.87
	PS2523141115	110-63	85.66
*	PS2523141315	110-90	97.89
	PS2523151115	125-63	123.83
	PS2523151215	125-75	130.79
	PS2523151315	125-90	128.76
	PS2523151415	125-110	116.98
	PS2523161115	140-63	188.17
	PS2523161215	140-75	187.24
	PS2523161315	140-90	190.47
	PS2523161415	140-110	193.17
	PS2523171115	160-63	215.60
	PS2523171215	160-75	222.40
	PS2523171315	160-90	221.37
	PS2523171415	160-110	228.62
	PS2523181215	180-75	343.88
	PS2523181315	180-90	354.72
	PS2523181415	180-110	359.18
	PS2523181515	180-125	359.62
	PS2523181615	180-140	354.88
	PS2523181715	180-160	329.28
	PS2523191115	200-63	409.76
	PS2523191215	200-75	410.22
	PS2523191315	200-90	413.57
*	PS2523191415	200-110	419.50
	PS2523191515	200-125	423.38
	PS2523191715	200-160	438.03
	PS2523201115	225-63	542.34
	PS2523201215	225-75	494.79
	PS2523201315	225-90	512.77
	PS2523201415	225-110	539.56
	PS2523201515	225-125	552.30
	PS2523201615	225-140	567.41
	PS2523201715	225-160	516.80
	PS2523211315	250-90	723.27
*	PS2523211415	250-110	723.27
	PS2523211515	250-125	723.27
	PS2523211715	250-160	775.83
	PS2523221415	280-110	1,093.59
	PS2523221715	280-160	1,103.21
	PS2523231415	315-110	1,464.87
*	PS2523231715	315-160	1,418.64
	PS2523232115	315-250	1,550.14
	PS2523232215	315-280	1,550.14

*	SDR17 code	D (mm)	£ ea
*	PS2524110815	63-32	26.06
	PS2524141115	110-63	78.81
	PS2524141315	110-90	90.83
*	PS2524151115	125-63	108.44
	PS2524151215	125-75	111.77
	PS2524151315	125-90	111.77
	PS2524151415	125-110	103.70
	PS2524161115	140-63	162.22
	PS2524161215	140-75	167.77
	PS2524161315	140-90	167.97
	PS2524161415	140-110	171.02
*	PS2524171115	160-63	182.88
	PS2524171215	160-75	183.73
*	PS2524171315	160-90	187.24
	PS2524171415	160-110	192.24
	PS2524181215	180-75	285.22
	PS2524181315	180-90	286.22
*	PS2524181415	180-110	282.15
	PS2524181515	180-125	285.69
	PS2524181615	180-140	279.51
	PS2524181715	180-160	294.95
	PS2524191115	200-63	316.90
	PS2524191215	200-75	316.90
*	PS2524191315	200-90	318.84
	PS2524191415	200-110	326.74
*	PS2524191515	200-125	329.43
	PS2524191715	200-160	338.41
	PS2524201115	225-63	393.74
	PS2524201215	225-75	410.41
*	PS2524201315	225-90	407.63
*	PS2524201415	225-110	404.01
	PS2524201515	225-125	425.24
	PS2524201615	225-140	429.79
	PS2524201715	225-160	412.83
	PS2524211315	250-90	549.99
	PS2524211415	250-110	555.95
	PS2524211515	250-125	575.01
*	PS2524211715	250-160	580.80
*	PS2524221415	280-110	713.26
	PS2524221715	280-160	713.26
*	PS2524231415	315-110	1,023.29
	PS2524231715	315-160	1,023.29
	PS2524232115	315-250	1,590.64
	PS2524232215	315-280	1,590.64

* Stocked item

Spigot Reducing Tee 90 Long

Tee equal with welded Reducer.



*	SDR11 code	D1-D2 (mm)	£ ea
	PS2523242115	355-250	3,706.90
	PS2523242215	355-280	4,107.98
	PS2523242315	355-315	4,131.63
	PS2523252215	400-280	4,993.87
	PS2523252315	400-315	5,060.68
	PS2523252415	400-355	5,141.58
	PS2523272415	500-355	8,066.48
	PS2523272515	500-400	8,145.00
	PS2523272615	500-450	8,301.94

*	SDR17 code	D1-D2 (mm)	£ ea
	PS2524242115	355-250	3,094.64
	PS2524242215	355-280	3,178.12
	PS2524242315	355-315	3,741.20
	PS2524252215	400-280	3,886.79
	PS2524252315	400-315	3,928.27
	PS2524252415	400-355	4,031.34
	PS2524272415	500-355	6,767.44
	PS2524272515	500-400	6,767.44
	PS2524272615	500-450	6,994.12

Spigot Branch 45 Long



*	SDR11 code	D (mm)	£ ea
	PS2513094515	40	12.97
	PS2513104515	50	22.43
*	PS2513114515	63	132.37
	PS2513124515	75	175.58
*	PS2513134515	90	275.98
*	PS2513144515	110	441.72
*	PS2513154515	125	485.18
	PS2513174515	160	645.63
	PS2513184515	180	860.90
	PS2513194515	200	1,052.71
	PS2513204515	225	1,442.21
*	PS2513214515	250	2,064.85
	PS2513224515	280	2,532.07
	PS2513234515	315	3,207.88

*	SDR17 code	D (mm)	£ ea
	PS2514094515	40	7.22
	PS2514104515	50	23.82
*	PS2514114515	63	35.87
	PS2514124515	75	63.31
*	PS2514134515	90	108.26
	PS2514144515	110	143.95
	PS2514154515	125	268.34
*	PS2514174515	160	443.66
	PS2514184515	180	580.95
*	PS2514194515	200	649.51
*	PS2514204515	225	1,021.67
*	PS2514214515	250	1,364.82
	PS2514224515	280	1,949.03
	PS2514234515	315	2,542.90

Spigot Red Br 45 Long



*	SDR17 code	D (mm)	£ ea
	PS2534121115	75-63	67.57

PE100 Y Long



*	SDR11 code	D (mm)	£ ea
	PS2543090815	40-32	14.18
	PS2543100915	50-40	19.63

* Stocked item

PE100-Brass Trans. long female



*	SDR11 code	D (mm)	£ ea
	PS2M13064335	20 x 1/2	31.18
	PS2M13074535	25 x 3/4	34.42
*	PS2M13084635	32 x 1	46.78
	PS2M13094735	40 x 1 1/4	60.69
	PS2M13104835	50 x 1 1/2	76.29
	PS2M13115035	63 x 2	101.86
	PS2M13125335	75 x 2 1/2	184.56
*	PS2M13135535	90 x 3	226.71
*	PS2M13145735	110 x 4	301.77
	PS2M13155735	125 x 4	361.12

PE100-Brass Trans. long male



*	SDR11 code	D (mm)	£ ea
	PS2M13067335	20 x 1/2	31.18
	PS2M13077535	25 x 3/4	34.42
*	PS2M13087635	32 x 1	46.78
	PS2M13097635	40 x 1	60.69
	PS2M13097735	40 x 1 1	60.69
	PS2M13107835	50 x 1	76.29
	PS2M13118035	63 x 2	101.86
	PS2M13128335	75 x 2 1/2	184.56
	PS2M13148735	110 x 4	361.13
	PS2M13158735	125 x 4	361.12

PE100-Stainless Steel Transition Union long female



*	SDR11 code	D (mm)	£ ea
	PS2V53074515	25 x 3/4	51.95
	PS2V53084615	32 x 1	66.23
	PS2V53094715	40 x 1 1/4	81.01
	PS2V53104815	50 x 1 1/2	97.93
	PS2V53115015	63 x 2	147.59
	PS2V53125315	75 x 2 1/2	210.03
	PS2V53135515	90 x 3	316.02
	PS2V53135715	90 x 4	390.02
	PS2V53145715	110 x 4	440.55

PE100-Stainless Steel Transition Union long male



*	SDR11 code	D (mm)	£ ea
	PS2V53077515	25 x 3/4	51.95
	PS2V53087615	32 x 1	68.76
	PS2V53097715	40 x 1 1/4	87.94
	PS2V53107815	50 x 1 1/2	107.91
	PS2V53118015	63 x 2	162.24
	PS2V53128315	75 x 2 1/2	241.16
	PS2V53138515	90 x 3	390.02
	PS2V53138715	90 x 4	244.63
	PS2V53148715	110 x 4	505.10

PE100-Steel Transition long



*	SDR11 code	D (mm)	£ ea
	PS2S13070035	25 x 3/4	70.08
	PS2S13080035	32 x 1	72.77
	PS2S13090035	40 x 1 1/4	85.73
	PS2S13100035	50 x 1 1/2	93.05
	PS2S13110035	63 x 2	103.64
	PS2S13120035	75 x 2 1/2	233.88
	PS2S13130035	90 x 3	296.93
	PS2S13140035	110 x 4	618.44
	PS2S13150035	125 x 4	707.17
	PS2S13160035	140 x 5	773.00
	PS2S13170035	160 x 6	989.93
	PS2S13180035	180 x 6	1,036.95
	PS2S13190035	200 x 8	1,267.86
	PS2S13200035	225 x 8	1,343.28
	PS2S13210035	250 x 10	2,290.43
	PS2S13220035	280 x 10	3,372.48
	PS2S13230035	315 x 12	3,747.05

Spigot Union long



*	SDR11 code	D (mm)	£ ea
	PS2353070015	25	36.34
	PS2353080015	32	46.80
	PS2353090015	40	60.80
	PS2353100015	50	52.94
	PS2353110015	63	75.91
	PS2353120015	75	103.83
	PS2353130015	90	129.69
	PS2353140015	110	173.24

* Stocked item

Short Spigot Fittings

PE100 Fittings with short spigots SDR11/17 black
injection moulded, for butt-welding.

Material

PE100, black, UK Water Reg4 approved.

Geometric Properties

Outside diameter and wall thickness according to EN 1555 and EN 12201.
Tolerances of z-sizes depend on the dimension. Up to d/D 160 = +/- 3 mm
and from d/D 180 = +/- 10 mm.

Type

Suitable for butt-welding.

Stub Flange Adaptor short



*	SDR11 code	D (mm)	£ ea
	PS233507F015	25	7.51
	PS233508F015	32	15.46
	PS233509F015	40	21.88
	PS233510F015	50	20.01
*	PS233511F015	63	20.75
	PS233512F015	75	24.75
*	PS233513F015	90	30.78
*	PS233514F015	110	45.88
*	PS233515F015	125	45.88
	PS233516F015	140	70.82
*	PS233517F015	160	87.04
*	PS233518F015	180	106.39
	PS233519F015	200	159.09
	PS233520F015	225	165.09
*	PS233521F015	250	227.66
*	PS233522F015	280	274.37
*	PS233523F015	315	406.98
*	PS233524F015	355	701.99
*	PS233525F015	400	885.74
*	PS233526F015	450	1,069.19
*	PS233527F015	500	1,149.45
*	PS233528F035	560	1,603.78
*	PS233529F015	630	2,851.07
	PS233530F035	710	3,235.40
	PS233531F035	800	4,218.29
	PS233532F035	900	6,691.13
	PS233533F035	1000	7,346.03

*	SDR17 code	D (mm)	£ ea
	PS233610F035	50	12.80
	PS233611F035	63	15.75
	PS233612F015	75	27.89
*	PS233613F015	90	29.57
*	PS233614F015	110	41.98
*	PS233615F015	125	40.12
	PS233616F015	140	52.65
*	PS233617F015	160	68.03
*	PS233618F015	180	74.99
	PS233619F015	200	121.88
	PS233620F015	225	124.66
	PS233621F015	250	168.43
*	PS233622F015	280	219.59
*	PS233623F015	315	298.83
*	PS233624F015	355	536.41
*	PS233625F015	400	696.71
*	PS233626F015	450	922.25
*	PS233627F015	500	1,002.41
*	PS233628F035	560	1,349.91
*	PS233629F015	630	1,908.55
	PS233630F035	710	2,004.62
	PS233631F035	800	2,766.77
	PS233632F035	900	3,635.20
	PS233633F035	1000	4,812.02

For backing rings please see page 51.

* Stocked item

Spigot Reducer short contd.



*	SDR11 code	D (mm)	£ ea
	PS2325231935	315-200	403.98
	PS2325232015	315-225	445.79
*	PS2325232115	315-250	471.13
*	PS2325232215	315-280	535.74
	PS2325242035	355-225	602.26
	PS2325242115	355-250	596.19
	PS2325242215	355-280	637.29
*	PS2325242315	355-315	717.33
	PS2325252215	400-280	782.46
	PS2325252315	400-315	805.88
*	PS2325252415	400-355	932.40
	PS2325262335	450-315	1,020.34
	PS2325262435	450-355	1,075.40
	PS2325262535	450-400	855.56
	PS2325272435	500-355	1,646.77
	PS2325272535	500-400	1,435.52
	PS2325272635	500-450	1,195.69
	PS2325282535	560-400	1,958.12
	PS2325282635	560-450	1,560.87
	PS2325282735	560-500	1,317.49
	PS2325292635	630-450	2,452.61
	PS2325292735	630-500	2,097.63
	PS2325292835	630-560	1,865.07

*	SDR17 code	D (mm)	£ ea
	PS2326231935	315-200	384.61
*	PS2326232015	315-225	446.94
*	PS2326232115	315-250	481.80
	PS2326232215	315-280	530.98
	PS2326242035	355-225	602.26
*	PS2326242115	355-250	568.28
	PS2326242215	355-280	634.55
*	PS2326242315	355-315	702.80
	PS2326252215	400-280	798.90
*	PS2326252315	400-315	812.73
*	PS2326252415	400-355	940.32
*	PS2326262335	450-315	823.40
	PS2326262435	450-355	827.70
*	PS2326262535	450-400	766.18
	PS2326272435	500-355	1,374.77
	PS2326272535	500-400	1,195.69
	PS2326272635	500-450	1,038.09
	PS2326282535	560-400	1,607.24
	PS2326282635	560-450	1,274.37
	PS2326282735	560-500	1,077.55
	PS2326292635	630-450	2,000.99
	PS2326292735	630-500	1,743.34
	PS2326292835	630-560	1,528.56
	PS2326302835	710-560	2,089.34
	PS2326302935	710-630	1,912.69
	PS2326313035	800-710	2,823.09
	PS2326323135	900-800	5,382.86
	PS2326333235	1000-900	7,063.36

PE100 Transition short male



*	SDR11 code	D (mm)	£ ea
	PS2615077315	25 x 1/2	3.25
	PS2615077515	25 x 3/4	2.68
	PS2615087515	32 x 3/4	3.62
	PS2615087615	32 x 1	4.91
	PS2615097615	40 x 1	6.03
	PS2615097715	40 x 1 1/4	5.83
	PS2615107715	50 x 1 1/4	7.22
	PS2615107815	50 x 1 1/2	5.46
	PS2615117815	63 x 1 1/2	9.62
	PS2615118015	63 x 2	14.89

* Stocked item

Spigot Elbow 45 short



* SDR11 code	D (mm)	£ ea
PS2415074515	25	4.83
PS2415084515	32	6.30
PS2415094515	40	14.85
PS2415104515	50	21.78
PS2415114515	63	26.30
PS2415124515	75	38.93
PS2415134515	90	58.40
PS2415144515	110	48.76
PS2415164515	140	138.76
PS2415174515	160	136.72
PS2415184515	180	242.87
PS2415194515	200	313.19
PS2415204515	225	363.79
PS2415214515	250	553.15
PS2415224515	280	690.75
* PS2415234515	315	856.10

* SDR17 code	D (mm)	£ ea
PS2416124515	75	24.19
PS2416134515	90	34.20
PS2416144515	110	53.76
PS2416164515	140	115.13
PS2416174515	160	106.22
PS2416184515	180	178.72
PS2416194515	200	211.70
PS2416204515	225	272.24
PS2416214515	250	440.25
PS2416224515	280	536.71
PS2416234515	315	669.45

Spigot Tee 90 short



* SDR11 code	D (mm)	£ ea
PS2515079015	25	4.92
PS2515089015	32	5.45
PS2515099015	40	10.02
PS2515109015	50	18.66
PS2515119015	63	28.51
PS2515129015	75	50.82
PS2515139015	90	62.26
PS2515149015	110	125.22
PS2515159015	125	133.32
PS2515169015	140	187.67
PS2515179015	160	158.08
PS2515189015	180	261.98
PS2515199015	200	353.73
PS2515209015	225	542.96
PS2515219015	250	1,021.12
PS2515229015	280	1,162.23
PS2515239015	315	1,729.62
* PS2515249015	355	2,429.03

* SDR17 code	D (mm)	£ ea
PS2516109035	50	16.28
PS2516119035	63	21.73
PS2516129015	75	38.49
PS2516139035	90	64.28
PS2516149015	110	106.56
PS2516159015	125	101.61
PS2516169015	140	148.02
PS2516179015	160	137.81
PS2516189015	180	194.00
PS2516199015	200	238.83
PS2516209015	225	310.74
PS2516219015	250	576.86
PS2516229015	280	741.81
PS2516239015	315	1,082.82

Spigot Red Tee short



* SDR11 code	D (mm)	£ ea
PS2525110815	63-32	23.16
PS2525141115	110-63	82.21
PS2525141315	110-90	85.64
PS2525171415	160-110	237.96
PS2525191735	200-160	800.02
PS2525201415	225-110	528.28
PS2525201515	225-125	546.38
PS2525201715	225-160	522.04

* SDR17 code	D (mm)	£ ea
PS2526141115	110-63	68.14
PS2526141315	110-90	74.44
PS2526171415	160-110	178.36
PS2526191735	200-160	673.22
PS2526201415	225-110	376.40
PS2526201515	225-125	375.95
PS2526201715	225-160	393.74

Seamless Pipe Bends

PE100 Fittings SDR11/17 black UK Water Reg4 approved: With long spigots, for butt-welding and electrofusion socket welding. Outside diameter and wall thickness according to EN 1555 and EN 12201.

Angles: Tolerances +/- 3°

Suitable for butt-welding and electrofusion socket-welding.

Seamless Pipe Bends 90 degree



*	SDR11 code	D (mm)	£ ea
	PS2433119025	63	215.05
	PS2433129025	75	238.90
	PS2433139025	90	253.99
	PS2433149025	110	346.94
	PS2433159025	125	398.35
	PS2433169025	140	457.71
	PS2433179025	160	532.89
	PS2433189025	180	879.92
	PS2433199025	200	1,068.47
	PS2433209025	225	1,267.79
	PS2433219025	250	1,577.78
	PS2433229025	280	1,975.90
	PS2433239025	315	2,452.58
	PS2433249025	355	3,668.48
	PS2433259025	400	4,458.35
	PS2433269025	450	6,302.25
	PS2433279025	500	9,477.65
	PS2433289025	560	11,856.32
	PS2433299025	630	16,760.68
	PS2433309025	710	32,232.90
	PS2433319025	800	35,456.03
	PS2433329025	900	74,801.60

*	SDR17 code	D (mm)	£ ea
	PS2434119025	63	193.91
	PS2434129025	75	199.20
	PS2434139025	90	212.44
	PS2434149025	110	267.33
	PS2434159025	125	316.60
	PS2434169025	140	365.47
	PS2434179025	160	400.96
	PS2434189025	180	641.37
	PS2434199025	200	771.75
	PS2434209025	225	908.82
	PS2434219025	250	1,179.37
	PS2434229025	280	1,369.29
	PS2434239025	315	1,787.34
	PS2434249025	355	2,476.84
	PS2434259025	400	3,634.20
	PS2434269025	450	5,143.74
	PS2434279025	500	7,382.33
	PS2434289025	560	10,068.52
	PS2434299025	630	12,558.58
	PS2434309025	710	21,436.38
	PS2434319025	800	33,766.26
	PS2434329025	900	46,031.11

Seamless Pipe Bends 60 degree



*	SDR11 code	D (mm)	£ ea
	PS2433116025	63	216.88
	PS2433126025	75	227.31
	PS2433136025	90	250.75
	PS2433146025	110	333.78
	PS2433156025	125	370.75
	PS2433166025	140	418.10
	PS2433176025	160	477.57
	PS2433186025	180	798.23
	PS2433196025	200	966.99
	PS2433206025	225	1,154.36
	PS2433216025	250	1,383.83
	PS2433226025	280	1,692.46
	PS2433236025	315	2,053.64
	PS2433246025	355	3,792.45
	PS2433256025	400	4,550.74
	PS2433266025	450	5,592.10
	PS2433276025	500	8,284.24
	PS2433286025	560	10,681.71
	PS2433296025	630	13,727.72
	PS2433306025	710	30,667.85
	PS2433316025	800	31,316.72
	PS2433326025	900	74,801.60

*	SDR17 code	D (mm)	£ ea
	PS2434116025	63	188.25
	PS2434126025	75	200.31
	PS2434136025	90	205.86
	PS2434146025	110	263.90
	PS2434156025	125	299.50
	PS2434166025	140	341.67
	PS2434176025	160	366.76
	PS2434186025	180	585.68
	PS2434196025	200	708.47
	PS2434206025	225	840.44
	PS2434216025	250	1,038.72
	PS2434226025	280	1,188.66
	PS2434236025	315	1,532.80
	PS2434246025	355	2,444.68
	PS2434256025	400	3,701.44
	PS2434266025	450	4,449.18
	PS2434276025	500	6,453.84
	PS2434286025	560	8,246.07
	PS2434296025	630	10,284.66
	PS2434306025	710	19,797.22
	PS2434316025	800	31,316.72
	PS2434326025	900	46,031.11

* Stocked item

Seamless Pipe Bends 45 degree



*	SDR11 code	D (mm)	£ ea
	PS2433114525	63	212.44
	PS2433124525	75	232.20
	PS2433134525	90	250.75
	PS2433144525	110	333.78
	PS2433154525	125	370.75
	PS2433164525	140	418.10
	PS2433174525	160	477.57
	PS2433184525	180	798.23
	PS2433194525	200	979.69
	PS2433204525	225	1,154.36
	PS2433214525	250	1,383.83
	PS2433224525	280	1,692.46
	PS2433234525	315	2,053.64
	PS2433244525	355	3,792.45
	PS2433254525	400	4,550.74
	PS2433264525	450	5,592.10
	PS2433274525	500	8,284.24
	PS2433284525	560	10,681.71
	PS2433294525	630	13,727.72
	PS2433304525	710	28,410.21
	PS2433314525	800	30,295.94
	PS2433324525	900	64,762.37

*	SDR17 code	D (mm)	£ ea
	PS2434114525	63	184.73
	PS2434124525	75	196.60
	PS2434134525	90	215.23
	PS2434144525	110	263.90
	PS2434154525	125	299.50
	PS2434164525	140	341.67
	PS2434174525	160	366.76
	PS2434184525	180	593.45
	PS2434194525	200	717.81
	PS2434204525	225	840.44
	PS2434214525	250	1,042.14
	PS2434224525	280	1,188.66
	PS2434234525	315	1,810.88
	PS2434244525	355	2,444.68
	PS2434254525	400	3,701.44
	PS2434264525	450	4,449.18
	PS2434274525	500	6,453.84
	PS2434284525	560	8,246.07
	PS2434294525	630	10,284.66
	PS2434304525	710	19,788.56
	PS2434314525	800	30,295.94
	PS2434324525	900	36,119.04

Seamless Pipe Bends 30 degree



*	SDR11 code	D (mm)	£ ea
	PS2433113025	63	212.44
	PS2433123025	75	232.20
	PS2433133025	90	250.75
	PS2433143025	110	333.78
	PS2433153025	125	375.57
	PS2433163025	140	418.10
	PS2433173025	160	483.88
	PS2433183025	180	798.23
	PS2433193025	200	979.69
	PS2433203025	225	1,169.56
	PS2433213025	250	1,383.83
	PS2433223025	280	1,692.46
	PS2433233025	315	2,080.79
	PS2433243025	355	3,842.39
	PS2433253025	400	4,550.74
	PS2433263025	450	5,592.10
	PS2433273025	500	8,284.24
	PS2433283025	560	10,681.71
	PS2433293025	630	13,727.72
	PS2433303025	710	28,410.21
	PS2433313025	800	30,295.94
	PS2433323025	900	64,762.37

*	SDR17 code	D (mm)	£ ea
	PS2434113025	63	184.73
	PS2434123025	75	196.60
	PS2434133025	90	205.86
	PS2434143025	110	263.90
	PS2434153025	125	299.50
	PS2434163025	140	341.67
	PS2434173025	160	366.76
	PS2434183025	180	585.68
	PS2434193025	200	717.81
	PS2434203025	225	840.44
	PS2434213025	250	1,042.14
	PS2434223025	280	1,204.21
	PS2434233025	315	1,532.80
	PS2434243025	355	2,444.68
	PS2434253025	400	3,701.44
	PS2434263025	450	4,449.18
	PS2434273025	500	6,453.84
	PS2434283025	560	8,246.07
	PS2434293025	630	10,284.66
	PS2434303025	710	19,788.56
	PS2434313025	800	30,295.94
	PS2434323025	900	36,119.04

* Stocked item

Seamless Pipe Bends 22 degree



*	SDR11 code	D (mm)	£ ea
	PS2433112225	63	212.44
	PS2433122225	75	232.20
	PS2433132225	90	250.75
	PS2433142225	110	338.14
	PS2433152225	125	370.75
	PS2433162225	140	418.10
	PS2433172225	160	477.57
	PS2433182225	180	798.23
	PS2433192225	200	979.69
	PS2433202225	225	1,154.36
	PS2433212225	250	1,383.83
	PS2433222225	280	1,692.46
	PS2433232225	315	2,053.64
	PS2433242225	355	3,792.45
	PS2433252225	400	4,550.74
	PS2433262225	450	5,592.10
	PS2433272225	500	6,453.84
	PS2433282225	560	10,681.71
	PS2433292225	630	13,727.72
	PS2433302225	710	28,410.21
	PS2433312225	800	30,295.94
	PS2433322225	900	64,762.37

*	SDR17 code	D (mm)	£ ea
	PS2434112225	63	184.73
	PS2434122225	75	196.60
	PS2434132225	90	205.86
	PS2434142225	110	263.90
	PS2434152225	125	299.50
	PS2434162225	140	346.21
	PS2434172225	160	366.76
	PS2434182225	180	585.68
	PS2434192225	200	717.81
	PS2434202225	225	851.46
	PS2434212225	250	1,042.14
	PS2434222225	280	1,204.21
	PS2434232225	315	1,553.02
	PS2434242225	355	2,444.68
	PS2434252225	400	3,701.44
	PS2434262225	450	4,449.18
	PS2434272225	500	6,453.84
	PS2434282225	560	8,246.07
	PS2434292225	630	10,284.66
	PS2434302225	710	19,788.56
	PS2434312225	800	30,295.94
	PS2434322225	900	36,119.04

Seamless Pipe Bends 11 degree



*	SDR11 code	D (mm)	£ ea
	PS2433111125	63	212.44
	PS2433121125	75	232.20
	PS2433131125	90	250.75
	PS2433141125	110	333.78
	PS2433151125	125	370.75
	PS2433161125	140	418.10
	PS2433171125	160	477.57
	PS2433181125	180	798.23
	PS2433191125	200	966.99
	PS2433201125	225	1,154.36
	PS2433211125	250	1,383.83
	PS2433221125	280	1,692.46
	PS2433231125	315	2,053.64
	PS2433241125	355	3,792.45
	PS2433251125	400	4,550.74
	PS2433261125	450	5,592.10
	PS2433271125	500	8,284.24
	PS2433281125	560	10,343.04
	PS2433291125	630	13,727.72
	PS2433301125	710	28,410.21
	PS2433311125	800	30,295.94
	PS2433321125	900	64,762.37

*	SDR17 code	D (mm)	£ ea
	PS2434111125	63	184.73
	PS2434121125	75	196.60
	PS2434131125	90	205.86
	PS2434141125	110	263.90
	PS2434151125	125	299.50
	PS2434161125	140	341.67
	PS2434171125	160	366.76
	PS2434181125	180	585.68
	PS2434191125	200	708.47
	PS2434201125	225	851.46
	PS2434211125	250	1,042.14
	PS2434221125	280	1,188.66
	PS2434231125	315	1,532.80
	PS2434241125	355	2,444.68
	PS2434251125	400	3,701.44
	PS2434261125	450	4,449.18
	PS2434271125	500	6,453.84
	PS2434281125	560	8,240.68
	PS2434291125	630	10,284.66
	PS2434301125	710	19,788.56
	PS2434311125	800	30,295.94
	PS2434321125	900	36,119.04

* Stocked item

Specialist Electrofusion Solutions



A comprehensive guide packed full of features and benefits of PLASSON'S Specialist EF Products.

This user friendly guide covers all the essential details of our products, including installation methods, but in a straight forward manner enabling you to make an informed decision before you enquire further about these specialist EF products.

The brochure covers the following large diameter products:

- Large Bore Saddles, both with spigot or flanged outlets
- Repair saddle
- Specialist Installation Tools
- Hot Tap Drills
- LD Couplers
- Sensor Saddle
- Flex Restraint
- Spigot Fittings



For full details on PLASSON Specialist EF Solutions [click here](http://www.plasson.co.uk)

Metric Fittings 20mm - 110mm and Imperial Fittings 1/2" - 2"



Insert liner into pipe (metric 20mm-63mm only) and slacken nut until half the thread is visible.



Push pipe into body, through the nut, split ring, and 'O' ring.



Tighten nut firmly: Hand tight on pipe 20mm (1/2") - 32mm (1"), on pipe 40mm (1 1/4") and above use a PLASSON wrench.

Note: For diameters 40mm and above, chamfering and lubrication of the pipe will ease insertion (use silicon lubricant). Metric fitting shown for illustrative purposes. Imperial fittings have black nuts.

Metric Fittings - 125mm



Draw the nut, collars, and 'O' ring over the end of the pipe to a distance of approx. 250mm (put the white split ring to one side for later use).



Insert the pipe into the body of the fitting until it meets the interior stop. Then draw the 'O' ring and collars close to the body of the fitting.



Tighten the nut with a PLASSON wrench until the 'O' ring and collars enter the fitting and reach their end position. Unscrew nut from fitting.



Open the white split ring and mount onto pipe with larger side against the collar ensuring that both parts meet the body of the fitting. Screw the nut tightly onto the fitting using a PLASSON wrench.

Metric Fittings - 160mm

- Undo and take out nuts & bolts.
- Take the two shell halves apart, remove the exposed sleeve & 'O' ring and place over the pipe end.
- Push the body of the fitting completely home over the pipe end.
- Place the two shell halves with grip rings over the pipe & fitting body.
- Insert bolts, washers, and nuts and tighten until the shells are in contact with each other.



PLASSON® Barrier



Remove nut and grip ring from fitting and mount brown nut onto the pipe and assemble grip ring flush with the pipe end.



Push the barbed end of the adaptor into the pipe until it meets the stop (a mallet may be required). Then push the plain end of the adaptor into the fitting until it meets the stop.



Screw nut tightly towards the body of the fitting using a PLASSON wrench.

PlasSaddle



The two clamps of the saddle wrap around the pipe and snap together. The saddle is now retained on the pipe and the installer is free to keep working.



Saddle body is positioned in place and connected to the clamps by hand tightening of the retaining nut. No small parts (nuts, bolts) that may fall and disappear in the trench are involved.



Use PLASSON mechanical spanner to rotate the nut another 1/2 turn and firmly secure the saddle in place. The outlet is then rotated and secured in the desired direction by tightening the grey nut.



Tapping of either live or unpressurised PE and PVC pipe mains is achieved by operating the integral cutter with a 12mm hex drive.

Plass4 Universal Fittings



Prepare the pipe by removing any unsound material adhering to the pipe then cut and deburr pipe as necessary.



Slide the universal end of the fitting onto the pipe end until it reaches the internal fins and a resistant point is felt. NOTE: DO NOT force pipe end past the internal fins as this may impair joint.



Tighten the black nut using a PLASSON wrench or similar. Assemble the Metric PE joint as per the standard fitting instructions.

Note: If reusing the fitting, ensure the metal teeth are located in the grip ring, and the pipe end does not pass the location of the internal fins.

Slide N' Seal Universal Slip Coupler



Mark pipe insertion depth. (approximately half the fitting length). Undo nuts 1 to 2 turns while ensuring they remain on the fitting.



Insert each pipe to the marking.



Tighten each nut firmly with a PLASSON wrench while holding the body with another wrench. The threads should no longer be visible.

Pushfit Universal



Prepare the pipe by removing any unsound material adhering to the pipe then cut and deburr pipe as necessary.

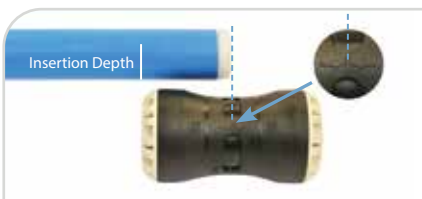


Push the pipe into the fitting up to the internal stop.



Tighten firmly using a PLASSON wrench or similar.

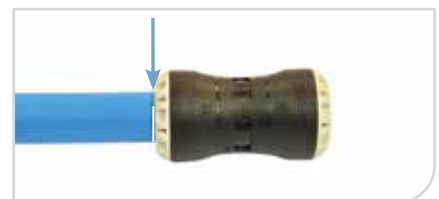
Pushfit assembly



Insert liner into pipe then measure and mark correct insertion depth against fitting as shown.



Push pipe into fitting up to the mark ensuring the pipe has been pushed passed the internal 'O' ring.



Make sure the mark on the pipe is inline with the end of the fitting.

Note: For assembly of Cu/PB/PEX, follow instructions above but ensure pipe manufacturers liner is fitted where applicable as per their instructions.

Pushfit disassembly



Using the Pushfit wrench, turn the nut anticlockwise to release pipe from fitting.



If the fitting is to be reused, the split ring, grip ring, and nut MUST be inserted in the order shown.

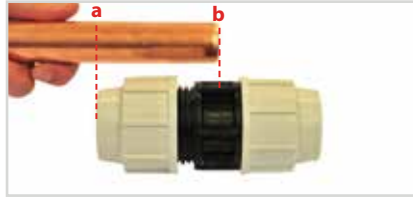


The Cu/PB/PEX fitting may be undone to facilitate the withdrawal of the pipe, but the metal grip ring cannot be removed and reused. A new fitting will be required.

Copper Adaptor Set table X and Y (7438)



Remove nut from fitting and discard white split ring (except 35, 42, and 54mm copper, where the white split ring is used as a spacer). Push black rubber seal into fitting body and assemble components in the order shown above.



Place nut onto fitting leaving half the thread visible. Cut the copper pipe square and remove all burrs and sharp edges. Mark pipe at "a" when the pipe end reaches the centre of the body of the fitting, as shown by "b" above.



Push and twist the pipe through the nut, adaptor and metal ring into the body of the fitting, until the mark is in line with the end of the nut as shown. Tighten the nut with a PLASSON wrench.

Note: Lubrication of the pipe end will ease insertion (use silicon lubricant). Once tightened, the metal grip ring cannot be reused.

Imperial & Irish Pipe Adaptor (7786 / 7787 / 7788 / 7789 / 7995 / 7996)



Remove nut from fitting and discard white split ring (unless using 1 1/2" pipe). Mount nut on pipe and assemble red split ring flush with the pipe end (reuse white split ring for 1 1/2" pipe).



Push the barbed end of the adaptor into the pipe until it meets the stop. Then push the plain end of the adaptor into the fitting until it meets the stop.



Screw nut tightly towards the body of the fitting. Use a PLASSON wrench for 1" pipe and above.

Universal Pipe Adaptor (7896/7898)



Prepare pipe by ensuring that the end is free from grease and roughen outer surface with wire wool or similar. Remove nut from end of fitting and mount onto pipe, discard white split ring.



Push adaptor into fitting to the stop. Also push and twist the pipe into the fitting until it meets the internal stop.



Screw the nut tightly towards the body of the fitting. Final tightening with a PLASSON wrench is essential. **The installations MUST be anchored against end loading.**

Lead Adaptor (7782)



Remove nut from fitting and discard white split ring. Mount nut onto pipe followed by brown split ring and seal ring.



These components should be positioned 20mm from the pipe end.



Push pipe into the body of the fitting and tighten firmly with a PLASSON wrench (it is important that the pipe is NOT pushed fully up to the stop inside the fitting).

Note: This product seals on the outside of the pipe and it is therefore important that the external part of the pipe (where the seal is made) is in good condition. If external pipe is of poor quality it may be preferable to use the Plass4 Universal fitting.

PlassGas Reusable

PlassGas has been designed for multiple re-use when carrying out purging and bypass, replacing electrofusion fittings that are discarded after use. PlassGas can be disassembled and reused multiple times.

For temporary use and are recommended for max 168 hour (7 day) use on low pressure and medium pressure gas systems.



1 Prior to use and without dismantling check for any sign of damage. Visually inspect the internal sealing ring for dirt or debris, this can be removed by rinsing with water and then drying.



2 Ensure the spigot or pipe end is clean and free from surface scratches or damage. When using 63mm pipe, use the Plasson chamfer tool for ease of insertion.



3 Prior to insertion, ensure that the locking nut is fully tightened onto the main body. Mark with a marker in the closed position.



4 Using the depth gauge on the PLASSON wrench, mark the spigot/pipe end. This shows the minimum depth required. The main body has a center stop so it cannot be over inserted. 32mm min depth 45mm or to stop. 63mm min depth 90mm or to stop.



5 Apply a leak detection fluid directly onto the sealing ring, as lubrication will ease the insertion.



6 Loosen the locking nut two or three turns, then slide onto the spigot/pipe. Once you have reached the center stop, or passed the minimum depth marker, re tighten the locking nut until the mark on the locking nut meets the mark on the main body.

Once the application has been completed and the fitting is no longer required on the spigot/pipe, loosen the locking nut sufficiently and slide off. Retighten and store for the next use.

Electrofusion

For EF joints ensure clean, dry working conditions and prepare pipe with appropriate tools to ensure removal of 0.2mm of surface of the pipe in the weld area.

For full jointing instructions please visit our [website: **plasson.co.uk**](https://www.plasson.co.uk)
https://www.plasson.co.uk/downloads/action/show_file/f/120



General note for all installations:

Before installation of all fittings, ensure that the end of the pipe to be inserted into the fitting is free of scratches and other imperfections and that both the pipe and the fitting itself are free of sand, mud, stones, etc. Where applicable ensure that split ring and grip ring teeth are sharp and bite into the pipe, to avoid pullouts if fittings are reused. If uncertain, replace the split ring and grip ring. Do not over tighten nuts when closing. Do not use wrenches or spanners with handle lengths longer than 46 cm. Alternatively replace split ring and grip ring where applicable. On MI and FI fittings and on PLASSON threaded fittings use PTFE to seal the thread. Do not use thread seal pastes.

Mechanical and Pushfit Fittings

Materials: Mechanical & pushfit fittings

Body: Polypropylene, high grade copolymer

Nut: High Grade Polypropylene

Split Ring and Grip Ring: Acetal (POM)

Liner: Acetal (POM)

Seal: Nitrile rubber (NBR)

Reinforcing Ring: Stainless steel on all female offtakes from 1¼" up to 4"

Threaded Fittings

Body: Polypropylene, high grade copolymer. Reinforcing Ring: Stainless steel. Brass Threads: CW617

Flanges

Flange dimensions in accordance with: BS EN 1092-1: 2018

All PLASSON products – MI and FI Threads

All threads conform to ISO - 7/1, BS 21, DIN 2999, NEN 3258, AS 1722 Part 1.

All external (male) threads are tapered. All internal (female) threads ≤ 3" are parallel. (unless stated)

Operating Temperatures

The fittings are not to be used with hot water, although they withstand the same temperature as the polyethylene pipe itself. The fittings and valves will withstand sub-zero temperatures.

Chemical Resistance

PLASSON fittings are supplied, as standard, with polyacetal split and grip rings and NBR seals which are suitable for water. For aggressive chemical applications CPVC split rings and EPDM or FPM 'O' rings can be supplied to produce a better chemical resistance.

Operating Pressures & Quality Certificates

PLASSON mechanical and pushfit fittings are tested and approved according to ISO 17885. For detailed pressure classification see table below. For WRAS approvals, please visit <http://www.wras.co.uk/directory/>.

For KIWA REG 4 approvals please visit <https://www.kiwa.com/gb/en/about-kiwa/water-products/>.

Product Code	Body Type	Pressure Rating	Stainless Steel Reinforcing Ring	From Pipe Diameter	To Pipe Diameter	From Thread	To Thread	From Outlet Size	To Outlet Size
Mechanical & Pushfit									
All Fittings	All Fitting Types	16.0							
Exception:									
Starts with 17	All 160mm Fittings	10.0							
Starts with 7 & 87	All Fittings with 3" Female Thread	10.0							
Starts with 7 & 87	All Fittings with 4" Thread	6.0							
77017	Plass4 (Universal)	10.0		50	50			35	50
7045	Slip Tee	12.5		40	63				
7120	End Plug	12.5		20	63				
7220	Compression Flange Adaptor	12.5		125	125				
7250	Threaded Adaptor	12.5		75	75	1 1/2"	3"		
7640/87640	45° Tee	8.0		63	110				
Mechanical Saddles									
16077	Saddle Single Outlet	12.5	YES	20	63	1/2"	1 1/2"		
16077	Saddle Single Outlet	12.5	YES	75	180	1/2"	3/4"		
16077	Saddle Single Outlet	10.0	YES	75	180	1"	2"		
Valves									
3047/3048	Angle Seat Valve	8.0							
3405	Threaded Stoptap	10.0				3/4"	1"		
3407	Stoptap	16.0		20	32				
3703	Mains Stop Valve	16.0				3/4"	2"		
PLASSON Threaded									
All Fittings	All Fitting Types	16.0							
Exception:									
Starts with 5	All Fitting Types	10.0				3/8"	3/8"		
5017	Threaded Socket	10.0				3"	3"		
5067	Threaded Nipple	10.0				3"	3"		

Electrofusion Fittings

Fitting Pressure Rating and Pipe Compatibility

PLASSON Fittings weld to PE80, PE100, PE100-RC and PEX-A pipes. Check that the pipe SDR is compatible with the PLASSON fittings. The range of compatible pipe SDR's for each specific fitting is defined on the fitting barcode label. For questions regarding general pipe SDR compatibility refer to PLASSON literature or contact your local PLASSON representative.

The following is a general guideline for PLASSON EF product pipe. SDR compatibility (in any case of discrepancy between the figure below and the figure on the barcode label, always refer to the barcode data).

Material

All PLASSON Electrofusion fittings are produced from material class PE100 which conform to international standards for potable water and natural or suitable manufactured gas systems.

Standards

PLASSON Electrofusion fittings are Certified to:

- EN12201:3 for Water
- EN1555:3 for Gas
- All Plasson EF fittings comply with DWi Regulation 31 for water quality and are approved (up to 315mm) to UK Water Reg4.

PLASSON's standard Electrofusion Fittings:

- PN 16 (Water)
- PE100 SDR11 (Gas)
- Up to 75mm (inclusive) are Weldable to Pipes SDR 11
- Elbows and Tees of main diameter 40mm-75mm SDR 11 to 17
- 90mm & Up are Weldable to Pipes SDR 11 to 17
- 63-75mm Tapping Saddles and Valves are suitable for SDR 11 to 17
- 225mm elbows SDR 11 to 21
- 250mm elbows SDR 11 to 26
- Tapping Saddles 90mm and above SDR 11 to 17
- Tapping Saddles below 90mm SDR 11

LightFit:

- PN 10 (Water)
- PE100 SDR17 (Gas)
- 40mm to 50mm are Weldable to Pipes SDR 11 to 17
- 63>90mm are Weldable to Pipes SDR 11 to 26
- 110mm>1000mm are Weldable to Pipes SDR 11 to SDR33 and in some cases SDR41 (see website for details)

Super Lightfit: available for pipe sizes 500>1000mm, suitable for pipework SDR17 to 41.

High Pressure Couplers: PN25 couplers available for pipe sizes 50mm to 355mm, for pipework SDR7 to 11.

Dimensional suitability:

Measure the pipe external diameter toward the pipe end using a Pi tape. The pipe external diameter must be within the tolerances defined in International standards such as EN 1555-2 and EN 12201-2. Measure the pipe external diameter toward the pipe end using a Pi tape to determine suitability.

Electrofusion, welding and cooling times are specified on the individual products. Welding times can also be recognised by appropriately equipped control boxes through the red pin connector or barcode.

Pin Size: 4.0mm

Voltage: 40V unless stated

Control box current capacity: <400mm 60/80amp / >400mm 80/110amp

Generators must be suitable for current load and be equipped with an automatic voltage regulator.

Due to design considerations, we recommend the use of Controllers with barcode reading facilities for the following products:

- Couplers above 400mm
- Flex Restraint
- Sensor Saddle

Contact Us

To place orders or check availability

PLASSON UK Office sales@plasson.co.uk 01444 24446

To get a branch visit or help with a project

Area Sales Managers See area sales map

Sales Director

Victoria Fiddies victoria.fiddies@plasson.co.uk 07788 185672

Customer Support Manager

Ruby Henry ruby.henry@plasson.co.uk 07788 185676

Technical Support

General Enquiries technical@plasson.co.uk

Technical Manager

Adam Cafer adam.cafer@plasson.co.uk 07788 185674

Technical Sales Support & Project Quotations

Trevor Smith trevor.smith@plasson.co.uk 01444 227885

Marketing Support

Marketing Requests marketing@plasson.co.uk

Visual Communication Design

Linda Gurr linda.gurr@plasson.co.uk 01444 237788

Accounts Queries

Accounts Enquiries accounts@plasson.co.uk

Credit Controller

Sarah Gould sarah.gould@plasson.co.uk 01444 237787

Purchase Ledger

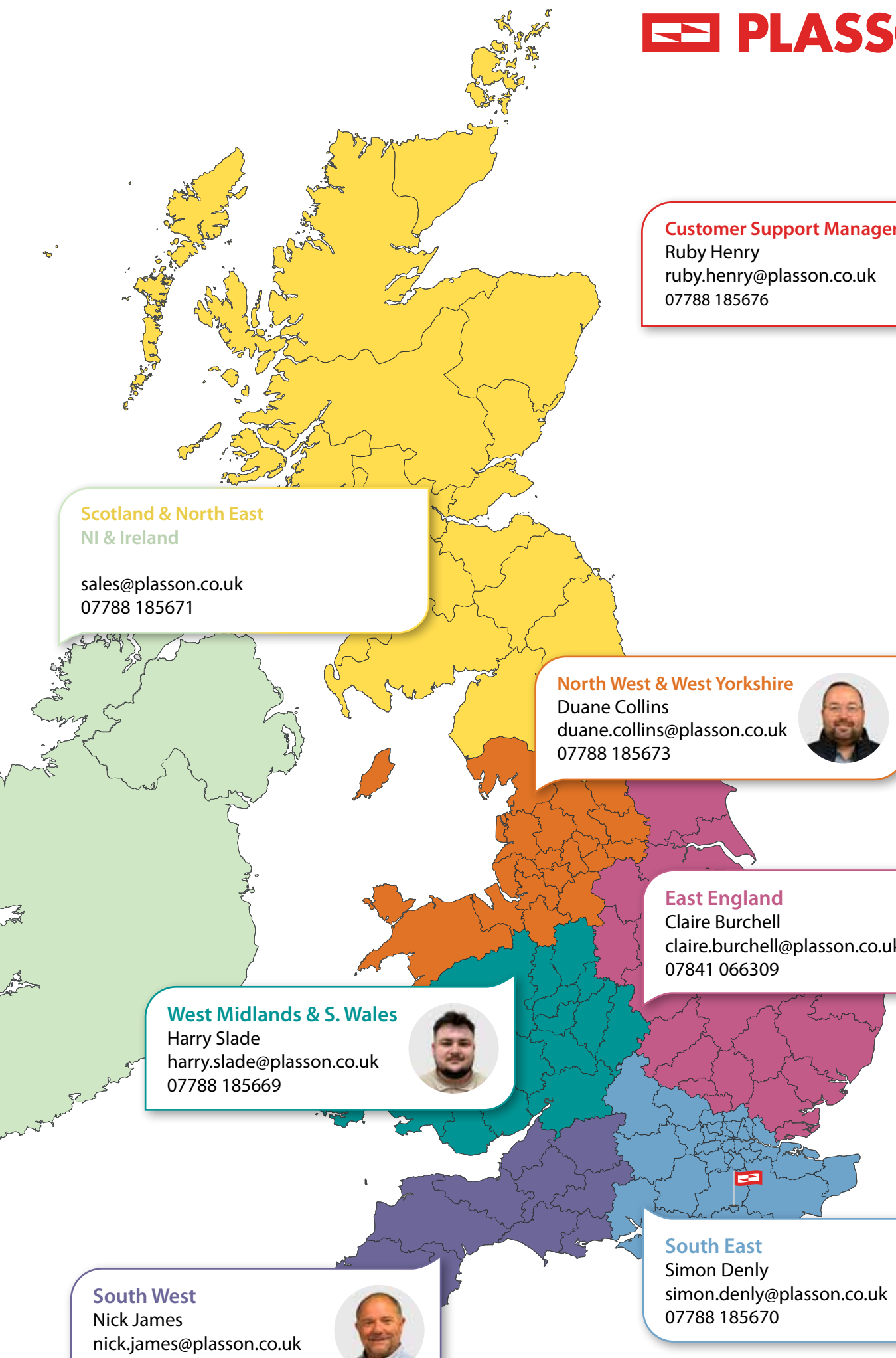
Debbie John debbie.john@plasson.co.uk 01444 237786



PLASSON UK



@plassonuk



Customer Support Manager

Ruby Henry
ruby.henry@plasson.co.uk
07788 185676



Scotland & North East
NI & Ireland

sales@plasson.co.uk
07788 185671

North West & West Yorkshire

Duane Collins
duane.collins@plasson.co.uk
07788 185673



East England

Claire Burchell
claire.burchell@plasson.co.uk
07841 066309



West Midlands & S. Wales

Harry Slade
harry.slade@plasson.co.uk
07788 185669



South West

Nick James
nick.james@plasson.co.uk
07788 185675



South East

Simon Denly
simon.denly@plasson.co.uk
07788 185670





 **PLASSON**®

Flow Solutions



Tel: 01444 244446

Web: plasson.co.uk

Email: sales@plasson.co.uk