

# 493803 PLASSON Sensor Saddle

The PLASSON Sensor Saddle provides a simple and reliable solution for providing a through wall connection into PE pipes, both new and existing.

Equipment such as pressure sensors, sampling points and flow sensors can easily be connected to both new and existing pipelines, by way of the BSP (ISO-7) thread in the saddle.

Two saddle sizes cover connection by Electrofusion to all PE pipes between 110mm and 1200mm and are PN16 rated and suitable for pipes SDR7.4 to SDR26.

Brass threads are standard. (Stainless steel threads are available for corrosive fluids on special request).

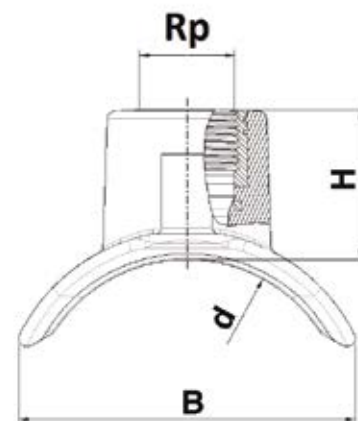
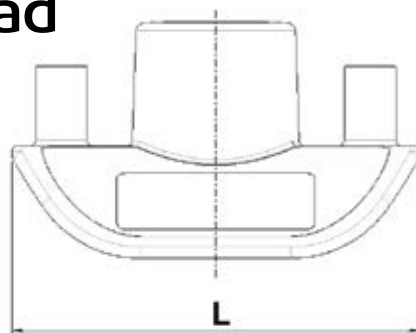
The use of the two unique yet simple clamping device options (strap for live or bolt for non-live systems) ensures professional, robust and leak-free component attachment.

## KEY FEATURES

- Designed for instrumentation connections.
- Permanent welded fixing.
- Robust welded attachment provides PN16 rating.
- Can be installed on live pipework.
- The installation footprint is small - easy to accommodate.



# 493803 Sensor Saddle with Brass Thread



## 493803 Sensor Saddle With Brass Thread



Code	d x Rp**	Voltage	B	H	L	UC	W
PF493803400005	110-400 x 1/2"	30v	85	35	103	140	120
PF493803400007	110-400 x 3/4"	30v	85	38	103	140	120
PF493803400010	110-400 x 1"	30v	85	38	103	140	120
PF493803900005	450-1200 x 1/2"	31v	85	35	103	140	120
PF493803900007	450-1200 x 3/4"	31v	85	38	103	140	120
PF493803900010	450-1200 x 1"	31v	85	38	103	140	120

## Installation Fast and Simple

Saddles are fitted to unpressurised pipes by a simple single bolt clamp.  
For fitting to pressurised systems, a strap clamp is required.



Correct tightening force indicator on strap mechanism

## Clamping Tool for Sensor Adaptor Catalogue numbers

Code	Description	Pipe Diameter mm
L244706000	Full set version (live and dead drilling)	110-1200mm
L244706001	Version without strap (dead drilling only)	110-1200mm