

Repair Clamps

6800 Stainless Steel / **6801** Ductile Iron

PLASSON repair clamps are quick and easy to use making them ideal for emergency repairs.

The PLASSON range of Repair Clamps are designed to repair water mains pipes where corrosion or mechanical damage has caused leakage. The clamps materials are selected to give maximum service life and are designed for ease of use.

All materials meet the requirements of WRAS and DWI Reg 31 for use on potable water systems. Both types are PN16 pressure rated & have a waffle type seal ensuring optimum seal.

The design of the clamps reduces the size of excavation required and each have an excellent tolerance range.



KEY FEATURES

Stainless Steel

- Stainless steel construction with ductile clamping jaws.
- Can be used on live mains.
- Captive bolts with nuts that do not require removal to use the clamp.

Ductile Iron

- Ductile iron construction with epoxy coating and stainless bridging plates.
- Two part body separates so it can be used without cutting the pipe.
- Captive bolts with heads retained in recesses.

6800 Stainless Steel Repair Clamps

PLASSON stainless steel repair clamps are quick and easy to use making them ideal for emergency repairs.

- Designed to be assembled on the main without pipe cutting.
- Wrap around design.
- Excellent tolerance range.
- Wide size range available.
- Light and easy to handle.
- Cost effective.
- Waffle type seal.
- Design reduces the size of excavation needed.



6800 Repair Clamp

Stainless
(76mm - 1 bolt)



6800 Repair Clamp

Stainless
(200mm - 3 bolt)



6800 Repair Clamp

Stainless
(300mm - 4 bolt)



Code	d
PK6800200	21-25 x 76
PK6800300	26-30 x 76
PK6800400	33-37 x 76
PK6800500	42-45 x 76
PK6800600	48-51 x 76
PK6800700	60-65 x 76

Code	d
PK6800750	78-88 x 200
PK6800800	88-98 x 200
PK6800850	92-103 x 200
PK6800875	108-118 x 200
PK6800900	114-126 x 200
PK6800100	168-182 x 200

Code	d
PK6800110	210-223 x 300
PK6800120	222-234 x 300
PK6800130	243-255 x 300
PK6800140	273-285 x 300
PK6800150	285-297 x 300

Fitting	Pressure Rating
6800	PN16
Component	Materials
Clamp Shell	Stainless Steel AISI 304 18.8
Clamp Jaws	EN-GJS-400-15 acc. to UNI EN 1563 norms
Waffle Seal	EPDM APE 55N Shore 53 + or -5
Bolts	High Tensile Steel, Galvanised M14 (multi bolt)
WRAS Cert No	1706545

6801 Ductile Iron Repair Clamps

- Made from Ductile Iron with Epoxy coating and stainless bridging plates.
- Two part body separates so it can be used without cutting the pipe.
- Excellent tolerance range.
- Extremely strong and durable.
- Cost effective.
- Captive bolts with heads held in recesses.
- Innovative design reduces the size of the excavation needed.

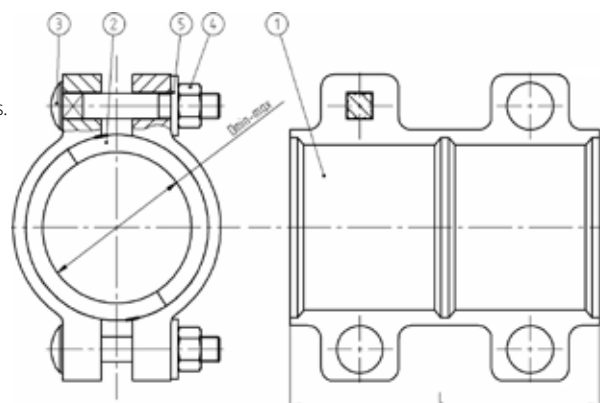


6801 Repair Clamp

Ductile Iron
(200mm - 4 bolt)



1. Ductile iron sectors.
2. Rubber seal gasket.
3. Hot dip galvanized bolt.
4. Hot dip galvanized nut.
5. Hot dip galvanized washers.



Code	d	L
PK6801100	92-103	200
PK6801200	115-125	200
PK6801300	141-154	200
PK6801400	166-181	200
PK6801500	216-226	200

Fitting	Pressure Rating
6801	PN16
Component	Materials
Clamp Body	Ductile Iron GJS 400-15 UNI EN 1563
Clamp Coating	PPA 571 ES Blue 536
Bridging Plates	Stainless Steel AISI 304 18.8
Waffle Seal	EPDM APE 55N Shore 53 + or -5
Bolts	High Tensile Steel, Galvanised M12 and M16
WRAS Cert No	1706545