



ASTM Catalog

2026







# ASTM Catalog

5th Edition

## Introduction

---

PLASSON provides a wide range of solutions for joining PE Pipe Systems. PLASSON's solutions have been used in water and gas systems for more than 60 years in over 80 countries around the world.

PLASSON now offers a complete line of products that comply with ASTM standards for inch sized pipes. The line includes electrofusion and compression fittings, valves, tooling and processor boxes.

## Subsidiary Companies

---

### USA

PLASSON USA  
E-mail: [sales@plassonusa.com](mailto:sales@plassonusa.com)  
[www.plassonusa.com](http://www.plassonusa.com)

### Australia

PLASSON Australia (PTY) Ltd.  
E-mail: [info@plasson.com.au](mailto:info@plasson.com.au)  
[www.plasson.com.au](http://www.plasson.com.au)

### Brazil

PLASSON Do Brasil  
E-mail: [plasson@plasson.com.br](mailto:plasson@plasson.com.br)  
[www.plasson.com.br](http://www.plasson.com.br)

### France

PLASSON France S.A.  
E-mail: [commercial@plassonfrance.fr](mailto:commercial@plassonfrance.fr)  
[www.plasson.fr](http://www.plasson.fr)

### Germany

PLASSON GmbH  
E-mail: [info@plasson.de](mailto:info@plasson.de)  
[www.plasson.de](http://www.plasson.de)

### Italy

PLASSON Italia  
E-mail: [info@plasson.it](mailto:info@plasson.it)  
[www.plasson.it](http://www.plasson.it)

### Poland

PLASSON Polska Sp.z o.o.  
E-mail: [bs@plasson.pl](mailto:bs@plasson.pl)  
[www.plasson.pl](http://www.plasson.pl)

### South Africa

PLASSON SA Pty Ltd, t/a PPA  
E-mail: [support@ppa.co.za](mailto:support@ppa.co.za)  
[www.ppa.co.za](http://www.ppa.co.za)

### Spain

PLASSON Spain S.L.  
E-mail: [plasson@plasson.es](mailto:plasson@plasson.es)  
[www.plasson.es](http://www.plasson.es)

### United Kingdom

PLASSON UK Ltd.  
E-mail: [sales@plasson.co.uk](mailto:sales@plasson.co.uk)  
[www.plasson.co.uk](http://www.plasson.co.uk)

### Romania

PLASSON Romania (BSR)  
E-mail: [contact@bsr.ro](mailto:contact@bsr.ro)  
[www.plasson.ro](http://www.plasson.ro)

### Israel

Plasson Israel marketing Ltd.  
E-mail: [info@plasson.co.il](mailto:info@plasson.co.il)  
[www.plasson.co.il](http://www.plasson.co.il)







Table of Contents

5901B, 5901U, 5901D

Pages 10-11 | IPS Couplings, CTS Couplings, DIPS Couplings



5911

Page 12 | Reducing Couplings



5904B

Page 12 | IPS Tees 90°



5947B/5947B0S

Page 13 | IPS Adjustable Elbows



5905B

Page 14 | IPS Elbows 90°



5906B

Page 14 | IPS Elbows 45°



5958B, 5958D

Pages 15-16 | IPS Branch Saddles  
DIPS X IPS Branch Saddles



5938B, 5938D

Pages 16-17 | IPS Transition Saddles (brass)  
DIPS Transition Saddles (brass)



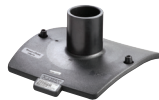
5938S

Page 18 | Sensor Adaptor with Stainless Steel 316 NPT Thread



5958B

Page 19 | Multi-Size Branch Saddle for Medium and Large Pipes



5963B

Pages 20-21 | IPS Tapping Saddles



5963D

Pages 21-22 | DIPS Tapping Saddles



29601

Page 22 | Tapping Tee Pressure Test Cap



5913B

Page 23 | High Volume Tapping Tees



5901B

Page 24 | Excess Flow Valves



49009

Page 25 | Flex Restraint, Tension Belt



5758

Page 26 | Wastewater Saddle 45° Wye Inlet



5758

Page 26 | Wastewater Saddle 90° TEE for PVC



Page 27

Tools for Wastewater Saddles



Page 28

Technical Specifications

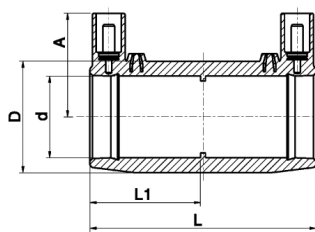


# IPS Coupling

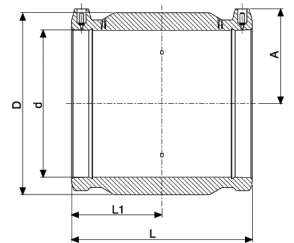
5901B



1/2" to 2"



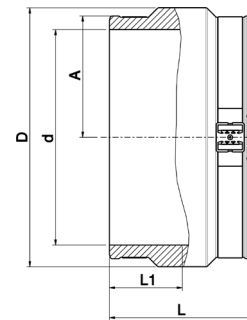
3" to 16"



Product Code	size d	L	LI	D	A	W	UC
5901B004005	1/2	2.80	1.36	1.42	1.51	0.13	480
5901B004007	3/4	2.80	1.36	1.42	1.51	0.09	480
5901B004010	1	3.15	1.54	1.77	1.66	0.145	280
5901B004013	1 1/4	3.54	1.71	2.17	1.85	0.20	200
5901B004015	1 1/2	3.94	1.91	2.68	2.09	0.36	132
5901B004020N	2	4.61	2.24	3.23	2.26	0.55	72
5901B004030	3	5.87	2.87	4.65	2.72	1.32	38
5901B004040	4	6.46	3.15	5.51	3.19	1.72	23
5901B004060	6	7.99	3.94	8.15	4.28	4.09	6
5901B004080	8	9.45	4.66	10.42	5.47	8.24	4
5901B004100	10	10.8	5.33	13.4	6.37	16.3	1
5901B003120	12	11.2	5.51	15.3	7.36	17.6	1
5901B003140	14	11.0	5.51	16.9	7.95	22.9	1
5901B003160	16	11.7	5.83	19.0	8.96	29.2	1



18" to 36"



The image above represents the entire coupling.  
The banding has been omitted from the left side of the image.

Product Code	size d	L	LI	D	A	W	UC
5901B003180	18	12.2	6.10	21.4	10.0	31.3	1
5901B003200	20	14.8	7.40	23.46	11.1	50.9	1
5901B003220	22	14.8	7.40	25.82	12.5	70.5	1
5901B003240	24	16.5	8.23	28.34	14.0	99.2	1
59013003280	28	18.58	9.29	33.58	15.73	139	1
5901B003300	30	19.69	9.84	36.69	16.89	193.5	1
5901B003360	36	22.44	11.22	47	22.17	203	1

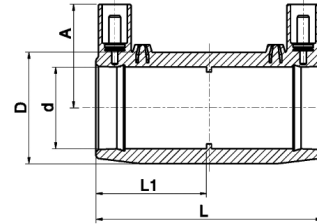
\*Plasson's large-diameter electrofusion couplings (18"–36" IPS & 18"–24" DIPS) include heavy-duty nylon straps at each end to control expansion during fusion, keeping the coupling aligned with the pipe for a reliable joint.

## CTS Coupling

5901U



1/2" to 1 1/4"



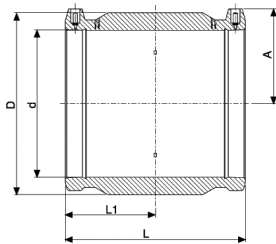
Product Code	size d	L	L1	D	A	W	UC
5901U004005	1/2	2.80	1.36	1.38	1.50	0.13	480
5901U004007	3/4	2.80	1.36	1.42	1.50	0.10	480
5901U004010	1	3.15	1.54	1.73	1.65	0.16	320
5901U004013	1 1/4	3.54	1.71	2.20	1.85	0.27	200

## DIPS Coupling

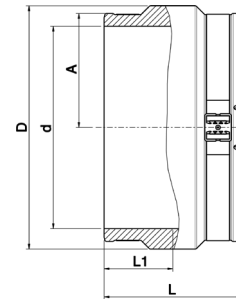
5901D



4" to 16"



18" to 24"



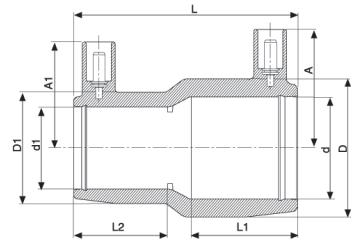
The image above represents the entire coupling. The banding has been omitted from the left side of the image.

Product Code	size d	L	L1	D	A	W	UC
5901D004040	4	6.81	3.35	6.14	3.39	2.63	18
5901D004060	6	8.35	4.11	8.78	4.49	5.88	4
5901D004080	8	9.45	4.67	11.0	5.51	9.3	4
5901D004100	10	10.8	5.31	13.5	6.61	14.5	1
5901D004120	12	11	5.43	16.56	7.87	25.58	1
5901D003140	14	11.65	5.7	18.7	8.58	30.85	1
5901D003160	16	12.08	6.02	21.30	10.00	33.06	1
5901D003180	18	14.80	7.40	22.89	11.12	45.00	1
5901D003200	20	14.80	7.40	25.33	12.46	59.50	1
5901D003240	24	18.58	9.29	30.27	14.37	106	1

\*Plasson's large-diameter electrofusion couplings (18"-36" IPS & 18"-24" DIPS) include heavy-duty nylon straps at each end to control expansion during fusion, keeping the coupling aligned with the pipe for a reliable joint.

## Reducing Coupling

5911



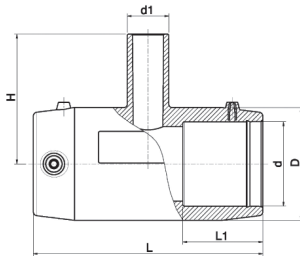
Product Code	size d x d1	L	A	A1	L1	L2	D	D1	W	UC
5911BU03010005	1 IPS x ½ CTS	3.15	1.61	1.40	1.51	1.29	1.25	1.25	0.136	360
5911UU03010005	1 CTS x ½ CTS	3.15	1.61	1.61	1.53	1.38	1.77	1.3	0.145	360
5911BU03013013	1¼ IPS x 1¼ CTS	3.53	1.85	1.85	1.77	1.77	2.18	2.18	0.23	200
5911BB03020013	2 IPS x 1¼ IPS	4.64	2.24	1.93	2.27	1.85	3.22	2.2	0.454	96
5911BU03020013	2 IPS x 1¼ CTS	4.64	1.74	2.30	2.27	1.73	3.23	2.18	0.626	96
5911BU03020020	2 IPS x 2 CTS	4.72	2.30	2.30	2.29	2.29	3.28	3.28	0.62	72

## IPS Tee 90°

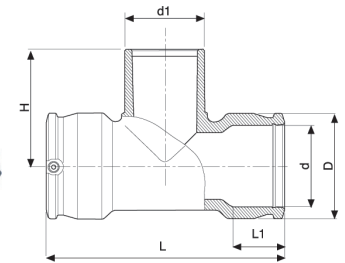
5904B



1" to 2"



3" &amp; 4"



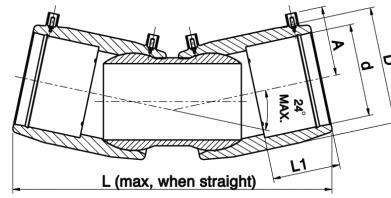
Product Code	size dxd1xd	L	LI	D	H	A	W	UC
5904B003010	1	4.09	1.48	1.75	2.83	1.68	0.18	144
5904B003013	1¼	4.76	1.71	2.19	3.31	1.84	0.37	96
5904B003015	1½	5.47	1.91	2.67	3.74	2.04	0.58	56
5904B003020	2	6.54	2.26	3.23	4.37	2.30	0.99	32
5904B003030	3	11.5	2.78	4.41	5.39	2.76	2.40	15
5904B003040	4	12.9	2.74	5.61	6.30	3.37	4.32	8

## IPS Adjustable Elbow - 2 sided

5947B



4" to 12"



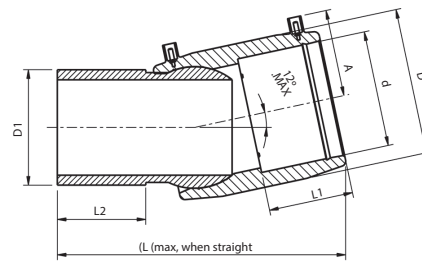
Product Code	size d	L	L1	D	A	W	UC
5947B003040	4	14.37	3.23	5.51	3.46	4.47	8
5947B003060	6	19.25	3.89	9.33	4.57	17.6	2
5947B003080	8	23.62	4.35	10.98	5.51	30.0	1
5947B003120	12	25.7	5.35	15.2	7.6	68.0	1

## IPS Adjustable Elbow - 1 sided

5947B0S



8" and 12"



Product Code	Size dXd1	L	L1	L2	D	A	W	UC
5947B0S3080	8	16.73	4.35	5.86	10.98	5.51	18.5	1
5947B0S3120	12	20.1	5.35	7.09	15.2	7.6	61.7	1

\*Every purchase of our one-sided adjustable elbow coupling includes a matching loose coupling.



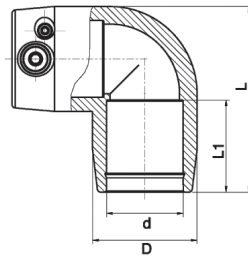
Scan here to see the Adjustable Elbow in action!

## IPS Elbow 90°

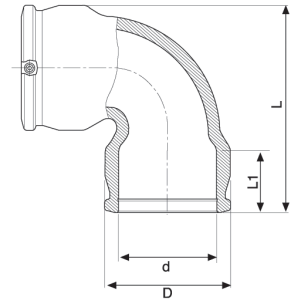
5905B



1" to 2"



3" &amp; 4"



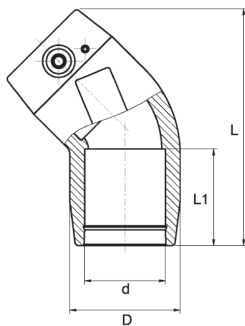
Product Code	size d	L	LI	D	A	W	UC
5905B003010	1	3.09	1.54	1.75	1.68	0.18	192
5905B003013	1¼	3.67	1.71	2.19	1.84	0.31	120
5905B003015	1½	4.31	1.91	2.67	2.04	0.49	72
5905B003020	2	5.20	2.26	3.23	2.04	0.73	50
5905B003030	3	7.95	2.80	4.42	2.30	1.93	16
5905B003040	4	9.35	2.69	5.61	2.76	3.35	10

## IPS Elbow 45°

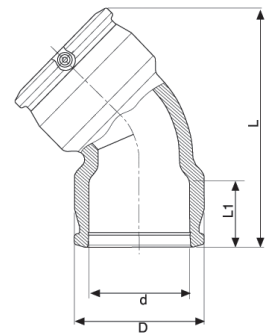
5906B



1" to 2"



3" &amp; 4"



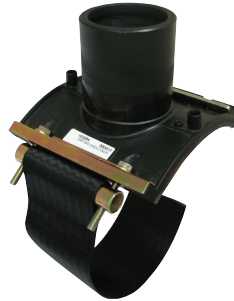
Product Code	size d	L	LI	D	A	W	UC
5906B003010	1	3.74	1.54	1.75	1.69	0.18	240
5906B003013	1¼	4.25	1.71	2.19	1.84	0.31	160
5906B003015	1½	4.88	1.91	2.67	2.04	0.49	96
5906B003020	2	5.87	2.26	3.23	2.30	0.73	48
5906B003030	3	9.06	2.80	4.42	2.76	1.67	22
5906B003040	4	10.70	3.19	5.61	3.37	2.80	12

## IPS Branch Saddle

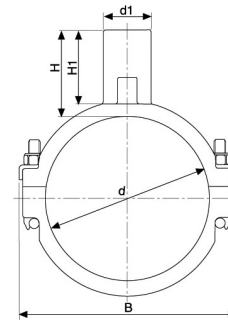
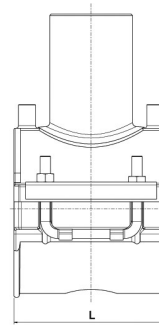
5958B



pipe 3" to 6" with  
2" or 3" outlets



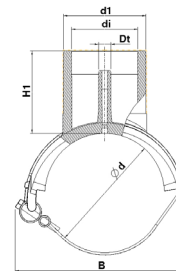
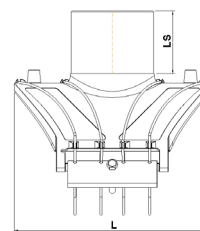
pipe 8" to 12" with  
2" or 3" outlets



Product Code	size d x d1	B	H	H1	L	W	UC
5958BB03030020	3 x 2	4.76	3.81	3.31	4.65	1.29	24
5958BB03030030	3 x 3	5.48	4.21	3.49	6.93	1.29	15
5958BB03040020	4 x 2	6.26	3.82	3.30	4.65	1.55	16
5958BB03040030	4 x 3	6.16	4.21	3.49	6.93	2.18	18
5958BB03060020	6 x 2	8.50	3.82	3.29	4.65	1.78	12
5958BB03060030	6 x 3	6.84	4.21	3.49	6.93	2.20	16
5958BB03080020	8 x 2	7.08	4.13	3.31	6.93	1.93	15
5958BB03080030	8 x 3	7.08	4.21	3.48	6.93	2.09	15
5958BB03100020	10 x 2	7.11	4.13	3.31	6.93	2.13	15
5958BB03100030	10 x 3	7.11	4.21	3.49	6.93	2.35	15
5958BB03120020	12 x 2	7.11	4.13	3.31	6.93	2.13	15
5958BB03120030	12 x 3	7.11	4.21	3.49	6.93	2.35	15

## IPS Branch Saddle

5958BBX



Product Code	size d x d1	B	H1	LS	L	di	Dt*	UC	W
5958BBX3060040T	6 x 4	8.66	4.37	3.3	10.35	3.58	0.63	6	3.61
5958BBX3080040T	8 x 4	10.83	4.45	3.3	11.61	3.58	0.63	6	3.38
5958BBX3040040T	4 x 4	6.57	4.33	3.25	9.45	3.58	0.63	8	3.11
5958BBX3060040	6 x 4	8.66	4.37	3.3	10.35	3.58	W/O test tube	6	3.61
5958BBX3080040	8 x 4	12.40	4.45	3.3	11.61	3.58	W/O test tube	6	3.38

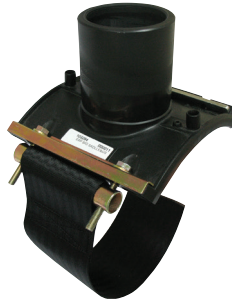
\* Dt – 0.63 inch tube, for connecting pressure test pump by special quick coupling

## DIPS x IPS Branch Saddle

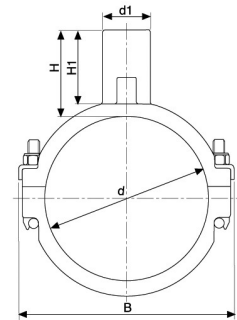
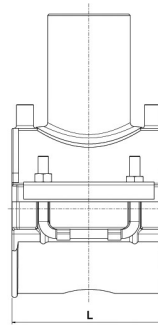
5958D



pipe 4" to 6"  
and 2" outlets



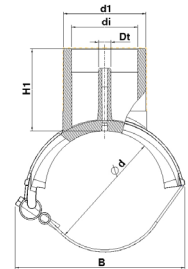
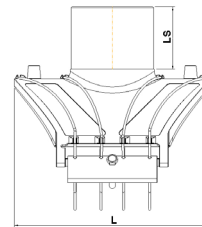
pipe 8" to 12"  
and 2" outlets



Product Code	size d x d1	B	H	H1	L	W	UC
5958DB03040020	4 x 2	6.26	3.82	3.30	4.65	1.55	16
5958DB03060020	6 x 2	8.50	3.82	3.29	4.65	1.78	12
5958DB03080020	8 x 2	7.08	4.13	3.31	6.93	1.93	15
5958DB03120020	12 x 2	7.11	4.13	3.31	6.93	2.13	15

## DIPS x IPS Branch Saddle

5958DBX

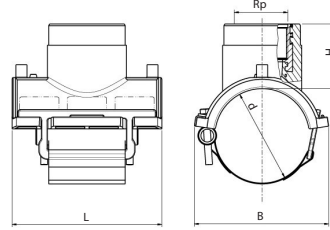


Product Code	size d x d1	B	H1	LS	L	di	Dt*	UC	W
5958DBX3060040T	6 x 4	8.66	4.37	3.3	10.35	3.58	0.63	6	3.37
5958DBX3080040T	8 x 4	10.83	4.45	3.3	11.61	3.58	0.63	6	3.37

\* Dt – 0.63 inch tube, for connecting pressure test pump by special quick coupling

## IPS Transition Saddle (brass) w/ NPT or CORP Outlets

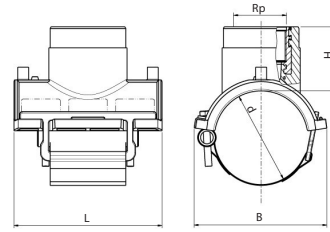
5938B



Product Code	Size d X Rp	B	L	H	W	UC
5938B00302045	2 IPS x 1 NPT	3.93	4.65	1.15	2.05	48
5938B00303045	3 IPS x 1 NPT	5.38	6.93	1.65	2.05	26
5938B00303055	3 IPS x 2 NPT	5.38	6.93	1.84	2.31	20
5938B00304045	4 IPS x 1 NPT	6.15	6.93	1.65	2.06	12
5938B00304055	4 IPS x 2 NPT	6.15	6.93	1.84	2.33	20
5938B00306045	6 IPS x 1 NPT	6.84	6.93	1.65	2.06	24
5938B00306055	6 IPS x 2 NPT	6.84	6.93	1.84	2.36	21
5938B00308045	8 IPS x 1 NPT	7.08	6.93	1.65	2.07	10
5938B00308055	8 IPS x 2 NPT	7.08	6.93	1.84	2.40	10
5938B00310045	10 IPS x 1 NPT	7.1	6.93	1.65	2.08	24
5938B00310055	10 IPS x 2 NPT	7.1	6.93	1.84	2.45	24
5938B00312045	12 IPS x 1 NPT	7.67	6.93	1.84	2.09	10
5938B00312055	12 IPS x 2 NPT	7.67	6.93	1.84	2.45	21
5938B00302060	2 IPS x 1 CORP	3.93	4.65	1.15	1.46	48
5938B00303060	3 IPS x 1 CORP	5.38	6.93	1.65	2.08	14
5938B00303070	3 IPS x 2 CORP	5.38	6.93	1.84	2.55	14
5938B00304060	4 IPS x 1 CORP	6.15	6.93	1.65	2.08	12
5938B00304070	4 IPS x 2 CORP	6.15	6.93	1.84	2.57	12
5938B00306060	6 IPS x 1 CORP	6.84	6.93	1.65	2.09	24
5938B00306070	6 IPS x 2 CORP	6.84	6.93	1.84	2.60	10
5938B00308060	8 IPS x 1 CORP	7.08	6.93	1.65	2.11	20
5938B00308070	8 IPS x 2 CORP	7.08	6.93	1.84	2.61	10
5938B00310060	10 IPS x 1 CORP	7.1	6.93	1.65	2.12	10
5938B00310070	10 IPS x 2 CORP	7.1	6.93	1.84	2.66	10
5938B00312060	12 IPS x 1 CORP	7.67	6.93	1.84	2.09	24
5938B00312070	12 IPS x 2 CORP	7.67	6.93	1.84	2.45	10

## DIPS Transition Saddle (brass) w/ NPT or CORP Outlets

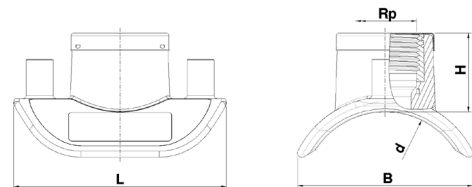
5938D



Product Code	Size d X Rp	B	L	H	W	UC
5938D00304045	4 DIPS x 1 NPT	6.5	6.93	1.65	2.07	12
5938D00304055	4 DIPS x 2 NPT	6.5	6.93	1.84	2.35	12
5938D00306045	6 DIPS x 1 NPT	6.96	6.93	1.65	2.06	10
5938D00306055	6 DIPS x 2 NPT	6.96	6.93	1.84	2.37	10
5938D00308045	8 DIPS x 1 NPT	7.08	6.93	1.65	2.07	24
5938D00308055	8 DIPS x 2 NPT	7.08	6.93	1.84	2.42	10
5938D00310045	10 DIPS x 1 NPT	7.1	6.93	1.65	2.09	10
5938D00310055	10 DIPS x 2 NPT	7.1	6.93	1.84	2.46	10
5938D00312045	12 DIPS x 1 NPT	7.67	6.93	1.84	2.09	10
5938D00312055	12 DIPS x 2 NPT	7.67	6.93	1.84	2.45	21
5938D00304060	4 DIPS x 1 CORP	6.5	6.93	1.65	2.09	20
5938D00304070	4 DIPS x 2 CORP	6.5	6.93	1.84	2.60	12
5938D00306060	6 DIPS x 1 CORP	6.96	6.93	1.65	2.1	24
5938D00306070	6 DIPS x 2 CORP	6.96	6.93	1.84	2.60	10
5938D00308060	8 DIPS x 1 CORP	7.08	6.93	1.65	2.11	24
5938D00308070	8 DIPS x 2 CORP	7.08	6.93	1.84	2.65	10
5938D00310060	10 DIPS x 1 CORP	7.1	6.93	1.65	2.13	10
5938D00310070	10 DIPS x 2 CORP	7.1	6.93	1.84	2.67	10
5938D00312060	12 DIPS x 1 CORP	7.67	6.93	1.84	2.09	10
5938D00312070	12 DIPS x 2 CORP	7.67	6.93	1.84	2.45	10

## Sensor Adaptor with Stainless Steel 316 NPT Thread\*

5938S



Product Code	Size d	H	B	L	Rp ( NPT)	UC	W
5938S3400005	4 IPS - 16 IPS x 1/2	1.38	3.34	4.05	1/2	140	0.24
5938S3400007	4 IPS - 16 IPS x 3/4	1.38	3.34	4.05	3/4	140	0.26
5938S3400010	4 IPS - 16 IPS x 1	1.38	3.34	4.05	1	140	0.33
5938S3900005	18 IPS - 48 IPS x 1/2	1.38	3.34	4.05	1/2	140	0.24
5938S3900007	18 IPS - 48 IPS x 3/4	1.38	3.34	4.05	3/4	140	0.26
5938S3900010	18 IPS - 48 IPS x 1	1.38	3.34	4.05	1	140	0.33

\*Installation only by using special clamping tool

## Clamping Tool for Sensor Adaptor

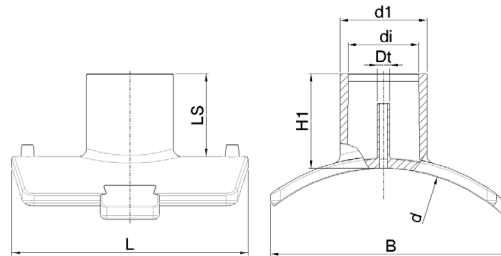
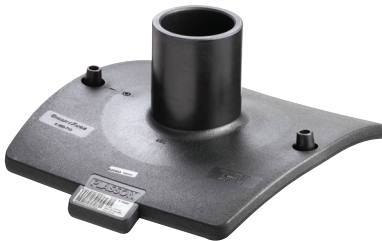
4706

- 4\_4706\_K000 Full set version 4" IPS - 48" IPS  
4\_4706\_K001 Version without straps 4" IPS - 48" IPS



## Multi-Size Branch Saddle for Medium and Large Pipes

5958B



Product Code	Main pipe range d IPS	Main pipe range d DIPS	Branch size d1	H	H1	B	L	W	UC
5958BB03160030T	10 - 16	10 - 14	3 IPS	4.09	4.60	12.00	11.81	3.3	7
5958BB03160040T	10 - 16	10 - 14	4 IPS	4.13	4.72	12.00	11.81	3.5	7
5958BD03160040T	10 - 16	10 - 14	4 DIPS	4.33	4.92	12.00	11.81	3.75	7
5958BB03280030T	18 - 28	16 - 24	3 IPS	4.09	4.60	12.40	11.81	3.3	7
5958BB03280040T	18 - 28	16 - 24	4 IPS	4.13	4.72	12.40	11.81	3.5	7
5958BD03280040T	18 - 28	16 - 24	4 DIPS	4.33	4.92	12.40	11.81	3.75	7

\*To be installed only by using Plasson clamping tool for multi-size branch saddle 10-28

## Installation Tools for Plasson Multi-Size Branch Saddle

### 4\_4701\_004

Clamping tool for Plasson multi-size branch saddle 10" - 28"  
Complete Kit - Suitcase with belts, ratchets and rounding heads  
incl. spittable plates 3" IPS / 4" IPS / 4" DIPS



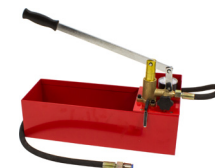
### 4\_4702\_000, 4\_4702\_002

Core cutter kit 2" IPS, 3" IPS, 4" IPS, 4" DIPS  
2" Female thread / 3" IPS / 4" IPS / 4" DIPS (chuck adapter) c/w suitcase, pilot drill,  
SDS-plus and SDS-Max adapter

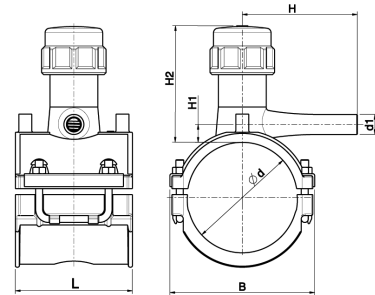


### 4\_4701\_005

Pressure test pump with adapter for Plasson saddle  
Plasson test stem EF Branch Saddle



# IPS Tapping Tee w/ IPS Outlet



Product Code	Size d x d1	H	B	H1	H2	L	W	UC
5963BB03013007	1¼ IPS x ¾ IPS	3.74	2.54	0.39	3.69	3.94	0.61	52
5963BB03013010	1¼ IPS x 1 IPS	3.74	2.54	0.47	3.69	3.94	0.61	52
5963BB03015007	1½ IPS x ¾ IPS	3.74	2.92	0.35	3.86	3.94	0.65	40
5963BB03015010	1½ IPS x 1 IPS	3.74	2.92	0.45	3.86	3.94	0.65	40
5963BB03020005N	2 IPS x ½ IPS	3.74	3.50	0.35	3.86	4.65	0.79	24
5963BB03020007N	2 IPS x ¾ IPS	3.74	3.50	0.27	3.86	4.65	0.79	24
5963BB03020010N	2 IPS x 1 IPS	3.74	3.50	0.47	3.86	4.65	0.79	24
5963BB03020013	2 IPS x 1¼ IPS	4.72	3.50	2.56	3.86	4.65	2.09	16
5963BB03020020	2 IPS x 2 IPS	4.72	4.05	2.56	6.97	4.65	2.34	16
5963BB03030005	3 IPS x ½ IPS	3.35	4.76	2.56	6.97	4.65	2.50	14
5963BB03030007	3 IPS x ¾ IPS	3.39	4.76	2.56	6.97	4.65	2.50	14
5963BB03030010	3 IPS x 1 IPS	4.13	4.76	2.56	6.97	4.65	2.50	14
5963BB03030013	3 IPS x 1¼ IPS	4.33	4.76	2.56	6.97	4.65	2.65	14
5963BB03030015	3 IPS x 1½ IPS	4.49	4.76	2.56	6.97	4.65	2.65	14
5963BB03030020	3 IPS x 2 IPS	4.72	4.76	2.56	6.97	4.65	2.65	14
5963BB03040005N	4 IPS x ½ IPS	3.35	6.26	2.56	6.97	4.65	2.65	12
5963BB03040007N	4 IPS x ¾ IPS	3.39	6.26	2.56	6.97	4.65	2.65	12
5963BB03040010N	4 IPS x 1 IPS	4.13	6.26	2.56	6.97	4.65	2.65	12
5963BB03040013	4 IPS x 1¼ IPS	4.33	6.26	2.56	6.97	4.65	2.77	12
5963BB03040020	4 IPS x 2 IPS	4.72	6.26	2.56	6.97	4.65	2.77	12
5963BB03060005	6 IPS x ½ IPS	3.35	8.50	2.56	6.97	4.65	3.08	10
5963BB03060007N	6 IPS x ¾ IPS	3.39	8.50	2.56	6.97	4.65	3.08	10
5963BB03060010N	6 IPS x 1 IPS	4.13	8.50	2.56	6.97	4.65	3.08	10
5963BB03060013	6 IPS x 1¼ IPS	4.33	8.50	2.56	6.97	4.65	3.22	10
5963BB03060020	6 IPS x 2 IPS	4.72	8.50	2.56	6.97	4.65	3.22	10
5963BB03080005	8 IPS x ½ IPS	3.35	7.08	2.56	6.97	6.93	3.17	10
5963BB03080007	8 IPS x ¾ IPS	3.39	7.08	2.56	6.97	6.93	3.17	10
5963BB03080010	8 IPS x 1 IPS	4.13	7.08	2.56	6.97	6.93	3.17	10
5963BB03080013	8 IPS x 1¼ IPS	4.33	7.08	2.56	6.97	6.93	3.30	10
5963BB03080015	8 IPS x 1½ IPS	4.49	7.08	2.56	6.97	6.93	3.30	10
5963BB03080020	8 IPS x 2 IPS	4.72	7.08	2.56	6.97	6.93	3.30	10

## IPS Tapping Tee w/ CTS Outlet

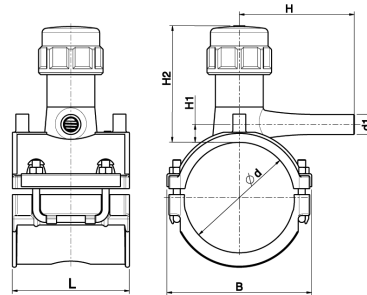
5963B



1.1/4" to 2"

3" to 6"

8"



Product Code	Size d x d1	H	B	H1	H2	L	W	UC
5963BU03013005	1¼ IPS x ½ CTS	3.74	2.54	0.27	3.69	3.94	0.61	52
5963BU03013010	1¼ IPS x 1 CTS	3.74	2.54	0.39	3.69	3.94	0.61	52
5963BU03015010	1½ IPS x 1 CTS	3.74	2.92	0.39	3.86	3.94	0.65	40
5963BU03020005N	2 IPS x ½ CTS	3.74	3.50	0.27	3.86	4.65	0.79	24
5963BU03020007N	2 IPS x ¾ CTS	3.74	3.50	0.47	3.86	4.65	0.79	24
5963BU03020010N	2 IPS x 1 CTS	3.74	3.50	0.35	3.86	4.65	0.79	24
5963BU03030005	3 IPS x ½ CTS	3.44	4.76	2.56	6.97	4.65	2.50	14
5963BU03030010	3 IPS x 1 CTS	4.13	4.76	2.56	6.97	4.65	2.50	14
5963BU03040005N	4 IPS x ½ CTS	3.44	6.26	2.56	6.97	4.65	2.65	12
5963BU03040010N	4 IPS x 1 CTS	4.13	6.26	2.56	6.97	4.65	2.65	12
5963BU03060005N	6 IPS x ½ CTS	3.44	8.50	2.56	6.97	4.65	3.08	10
5963BU03060010N	6 IPS x 1 CTS	4.13	8.50	2.56	6.97	4.65	3.08	10
5963BU03080005	8 IPS x ½ CTS	3.44	7.08	2.56	6.97	6.93	3.17	10
5963BU03080010	8 IPS x 1 CTS	4.13	7.08	2.56	6.97	6.93	3.17	10

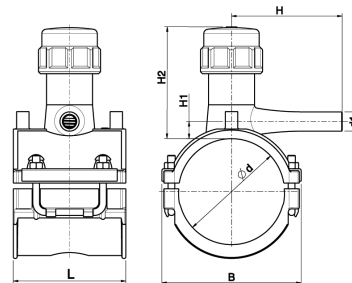
## DIPS Tapping Tee w/ IPS Outlet

5963D



4" &amp; 6"

8"



Product Code	Size d x d1	H	B	H1	H2	L	W	UC
5963DB03040010	4 DIPS x 1 IPS	4.13	6.26	2.56	6.97	4.65	2.65	12
5963DB03040020	4 DIPS x 2 IPS	4.33	6.26	2.56	6.97	4.65	2.77	12
5963DB03060010	6 DIPS x 1 IPS	4.13	8.50	2.56	6.97	4.65	3.08	10
5963DB03060020	6 DIPS x 2 IPS	4.72	8.50	2.56	6.97	4.65	3.22	10
5963DB03080010	8 DIPS x 1 IPS	4.13	7.08	2.56	6.97	6.93	3.17	10
5963DB03080020	8 DIPS x 2 IPS	4.72	7.08	2.56	6.97	6.93	3.30	10

## DIPS Tapping Tee w/ CTS Outlet

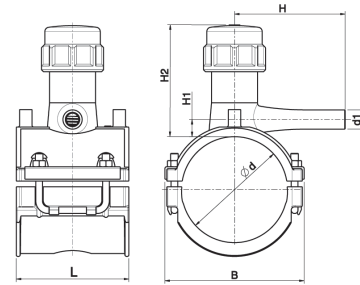
5963D



4" &amp; 6"



8"



Product Code	Size d x d1	H	B	H1	H2	L	W	UC
5963DU03040010	4 DIPS x 1 CTS	4.13	6.26	2.56	6.97	4.65	2.65	12
5963DU03060010	6 DIPS x 1 CTS	4.13	8.50	2.56	6.97	4.65	4.13	10
5963DU03080010	8 DIPS x 1 CTS	4.13	7.08	2.56	6.97	6.93	3.17	10

## Tapping Tee Pressure Test Cap

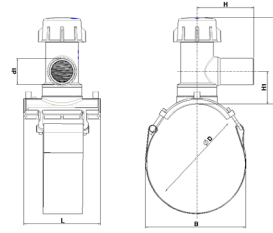
29601

Product Code	Test Cap Item Description	Pairing with Tapping Tee
29601001	Test Cap TT 1¼ - 2 (Type 40)	EF TT Series 5963 for 1¼" & 2" Main
29601002	Test Cap TT 3 - 8 (Type 57)	EF TT Series 5963 for 3" - 8" Main (except Mono 4")
29601003	Test Cap TT 4 (Type 50)	EF TT Series 5963 for 4" Mono TT Only
29601004	Test Cap TT HVTT 3 - 12 (Type 73)	EF HVTT Series 5913 - All Sizes



# High Volume Tapping Tee (HVTT)

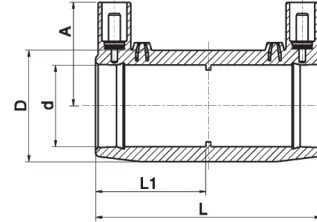
5913B



Product Code	Pipe size D	Outlet size d1	H	B	H1	H2	L	A
5913BB03030013	3 IPS	1¼ IPS	4.72	5.47	2.95	7.67	6.93	2.63
5913BB03030020	3 IPS	2 IPS	5.11	5.47	2.95	7.67	6.93	3.03
5913BB03040013	4 IPS	1¼ IPS	4.72	6.14	2.95	7.67	6.93	2.63
5913BB03040020	4 IPS	2 IPS	5.11	6.14	2.95	7.67	6.93	3.03
5913BB03060013	6 IPS	1¼ IPS	4.72	6.81	2.95	7.67	6.93	2.63
5913BB03060020	6 IPS	2 IPS	5.11	6.81	2.95	7.67	6.93	3.03
5913BB03080013	8 IPS	1¼ IPS	4.72	7.08	2.95	7.67	6.93	2.63
5913BB03080020	8 IPS	2 IPS	5.11	7.08	2.95	7.67	6.93	3.03
5913BB03100013	10 IPS	1¼ IPS	4.72	7.08	2.95	7.67	6.93	2.63
5913BB03100020	10 IPS	2 IPS	5.11	7.08	2.95	7.67	6.93	3.03
5913BB03120013	12 IPS	1¼ IPS	4.72	7.67	2.95	7.67	6.93	2.63
5913BB03120020	12 IPS	2 IPS	5.11	7.67	2.95	7.67	6.93	3.03

## IPS Excess Flow Valve

5901B

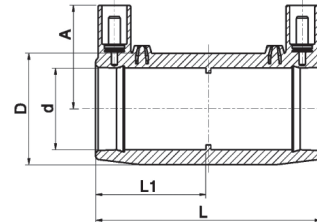


Product Code	size d	Flow Rate	L	LI	D	A	W	UC
5901B04H4007	¾	700 Orange	3.15	1.54	1.77	1.66	0.145	280
5901B05H4007	¾	1100 Gray	3.15	1.54	1.77	1.66	0.145	280
5901B06H4007	¾	1800 Green	3.15	1.54	1.77	1.66	0.145	280

\*Please contact Plasson USA for information on 1" IPS EFV\*

## CTS Excess Flow Valve

5901B



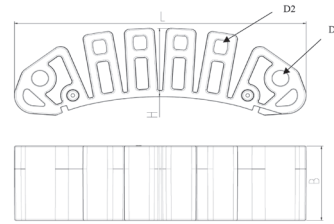
Product Code	size d	Flow Rate	L	LI	D	A	W	UC
5901U04H4010	1	700 Orange	3.15	1.54	1.73	1.65	0.16	320
5901U05H4010	1	1100 Gray	3.15	1.54	1.73	1.65	0.16	320
5901U06H4010	1	1800 Green	3.15	1.54	1.73	1.65	0.16	320



Scan here for an animated video of the EFV!

## Flex Restraint

49009



Product Code	Size	L	H	B	D1	D2	UC	W
49009999	4 IPS - 63 IPS	7.95	1.57	2.56	no hole	no hole	60	0.66

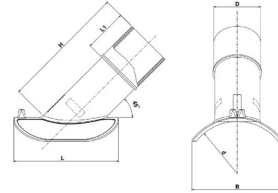
## Tension Belt for Flex Restraint

4\_4704\_003



## Wastewater Saddle 45° Spigot 4" IPS

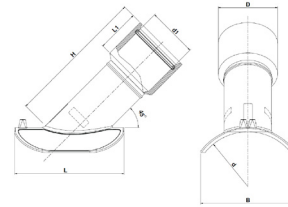
5758



Product Code	Size d	Size d1	B	L	D	H	L1
5758BBA070040	6 IPS/DIPS	4 IPS	7.22	10	4	11.6 - 12.4	4.13 - 4.92
5758BBA120040	8 IPS - 14 IPS	4 IPS	8.6	10	4	11.6 - 12.4	4.13 - 4.92

## Wastewater Saddle 45° Wye for Sch 40 PVC

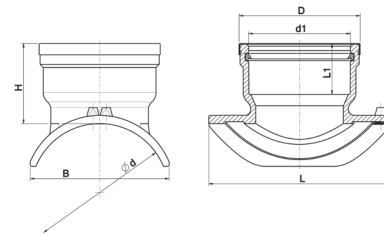
5758



Product Code	Size d	Size d1	B	L	D	H	L1
5758DBAV070040	6 IPS/DIPS	4 IPS	7.22	10	5.43	11.3 - 12.9	3.94
5758DBAV120040	8 IPS - 14 IPS	4 IPS	8.6	10	5.43	11.3 - 12.9	3.94

## IPS and DIPS Wastewater Saddle Tee 90° for PVC

5758



Product Code	Size d x d1	B	H	L	L1	D	W	UC
5758BPV4080060	8 IPS x 6 PSM	8.19	4.92	11.4	3.15	7.48	3.00	4
5758BPV4100060	8 DIPS - 10 IPS x 6 PSM	8.85	4.92	3.15	3.15	7.48	3.00	6
5758BPV4140060	10 DIPS - 14 IPS x 6 PSM	9.72	4.92	11.4	3.15	7.48	3.00	6
5758BPV4220060	14 DIPS - 22 IPS x 6 PSM	10.3	4.92	3.15	3.15	7.48	3.00	6

NOTE: Special drilling and clamping tools required. Please consult your Plasson / IPF representative.  
PSM dimensions to ASTM D-3034.

## Drilling and Clamping Tools for Wastewater Saddles

4\_4703\_001

Cutting and Clamping tool for PLASSON waste water saddle 45° Wye

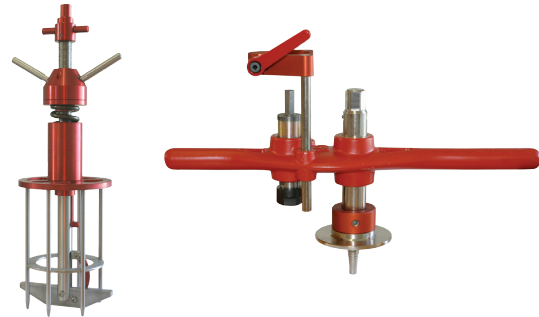
- See details in Tooling



4\_4700\_004

Clamping & Drilling Tool for 5758 Wastewater Saddle 90°

- See details in Tooling



# Technical Specifications for Plasson ElectroFusion Fittings

## Fittings Material

All Plasson ElectroFusion fittings (rated up to 200 psi) are manufactured using PE 4710 black compounded resins listed in the PPI TR-4 and which conform to international standards for potable water including NSF 61.

## Pressure Rating

- Wastewater (LightFit) saddles are rated to 25 ft. of water (10.8 psi).
- Couplings 2 IPS and larger are rated 200 psi (water) and the equivalent MAOP (gas) in accordance with governing regulations.
- Select electrofusion couplings are rated up to 250 psi (water). Please consult your Plasson representative for specific sizes and approvals.

Note: for further details, see the notations on each fitting or consult your Plasson representative.

## Suitable Pipe Materials

Electrofusion approved on pipe material: PE 2406/2708, PE 3408/3608 and PE 4710.

## Approved Wall Thickness for Electrofusion

### Wastewater (LightFit) Saddles:

- For diameters  $\geq 6$  IPS, wall thickness  $SDR \leq 26$

### Fittings rated 160 psi and higher:

- For diameters  $\geq 2$  IPS, wall thickness  $SDR \leq 11$
- For diameters  $> 2$  IPS, wall thickness  $SDR \leq 17$

## Tapping Saddles

All integral cutters are brass and are pre-drilled to allow pressure testing prior to tapping.

### Cutter diameters:

- For pipe diameters  $\leq 2$  IPS, cutter diameter 0.8 inch
- For pipe diameters  $> 2$  IPS, cutter diameter 1.2 inch
- EF HVTT cutter diameter 1.85 inch

Approved wall thickness for tapping saddle cutters:

- For diameters  $\leq 6$  DIPS, wall thickness  $SDR \geq 9$
- For diameters  $> 6$  DIPS, please consult your Plasson / IPF representative

## Fusion Parameters

Fusion time and cooling time are clearly marked on the barcode label of each and every fitting. In addition, they may be obtained using a barcode reader. Couplings of diameter 12" IPS and wastewater saddles have a red colored self-recognition terminal pin that communicates fusion time automatically to Plasson Controllers (the Smart-System solution) when the terminals are connected according to instructions.

All Plasson's fittings may be welded successfully at ambient temperatures from 14 to 113°F (-10° to 45°C). For more details please contact your Plasson representative.

## Standards

Plasson ElectroFusion fittings are designed, tested and quality controlled in accordance with Plasson's internal standards. These standards are based on the following American standards:

- ASTM D2513
- ASTM F1055
- ASTM F2897
- AWWA C906

## Quality

Plasson has incorporated a quality assurance system in accordance with ISO 9001. Operating approval according to ISO 9001 was granted to Plasson by the Israel Standards Institute.

The ISO 9001 quality assurance system imposes stringent standards of control throughout the manufacturing processes.

## NSF 61

The fittings are certified by NSF international for compliance with NSF/ANSI 61 - Drinking water system components, Health effects.



### Abbreviations used on the product description pages of this catalog:

A, A1	Height of shroud from centerline	L, L1, L2	Length
B	Width	n	Number of bolt holes in flanges
d, d1	Nominal diameter of fitting or outlet	S	Diameter of bolt holes in flanges
D, D1	Diameter	t	Thickness of metal flange
Dp	Pitch circle diameter of bolt holes in flanges	W	Weight
G, R	Threaded outlet diameter	UC	Units per carton
H	Height		

Dimensions in inches, weights in pounds

Whereas the products shown in this catalog illustrate and describe the current state of their development, PLASSON reserves the right at all times to make such technical alterations as it shall see fit to its products. Although every care has been taken in the preparation of the information, we cannot rule out inadvertent errors or omissions. Purchasers should take into account possible deviations or variations which will not substantially diminish the functionality or performance of the products, and in many cases, are designed to improve the same.

PLASSON® is the registered trademark of PLASSON Ltd. or PLASSON Maagan Michael Industries Ltd.

PLASSON's products are protected by patents, trademark, design and copyright laws.







Table of Contents

323085324

Page 34 PolyCode (USB + Bluetooth)



3F2306303

Page 35 Polymatic Plus (USB) + Bluetooth



4PM00110

Page 36 Polymax 110V + Bluetooth



4PM00240

Pages 37 Polymax 240V + Bluetooth



3F0318V112

Page 38 Plasson PolyControl Plus (USB) V.2.0

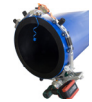


Page 39 Smartfuse App



Page 40 Plasson Processor Box Dynamic

Page 41 Battery Powered Chain Peeler



Page 42 Guidelines for PLASSON Processor Box Care



Pages 43-46 Installation Tools



Page 47 Attestation of Conformance



## PolyCode (USB + Bluetooth)

32308S324

Electrofusion Processor for welding of small fittings

For all EF fittings up to 6" IPS

Mounted in plastic suitcase

### Technical Specifications

Part number	32308S324
Output current	75 A (54 A peak current)
Welding voltage	8-48 V
Power supply	110 VAC
Weight	24.25 lbs
Dimensions	18.5 x 7 x 14.5 in
Welding cable length	46.5 in
Data recording	1000 welding cycles, downloadable by USB memory stick
Display	4 lines alphanumeric display, available in 26 languages



### Welding Data Input

- Plasson "SmartFuse" automatic welding data input
- Barcode reading (including temperature compensation)
- Manual input of barcode digits

\* At long welding cycles, cool down time equal to the welding time is required

# Polymatic - Plus (USB) + Bluetooth

3F2306303

## Electrofusion Processor

- BARCODE-System
- Plasson Smart-System
- MANUAL-Mode
- Data Recording with USB-Interface
- Traceability functions conform to ISO12176-3/4



## Technical Specifications

ISO 12176-2 Class	P2 4 U S1 V AK D X
Input voltage	110V ~/AC, (90V-150V)
Input current	32A
Input frequency	50Hz (40-70Hz)
Power factor	cos p < 0.6 – 0.9 (Phase Angle Control)
Output voltage	8-48V AC/~
Output current	80A (max. 110A)
Energy adjustment	Temperature Compensation
Power consumption	3600VA
Temperature range	14°F - +120°F
Protection class	CE, IP54, Class 2
Weight incl. cables	50.7 lbs
Main supply cable	16.4 ft
Welding cable	16.4 ft
Welding terminals	4.0 - 4.7 mm
Display	4 x 20 Characters (alphanumerical), background lighting
Dimensions	17.3 in x 15 in x 12.6 in

## Monitoring Functions

Input	Voltage / Current / Frequency
Output	Voltage / Resistance / Contact / Short Circuit / Current Monitoring
Other	System / Working Temperature / Service
Error messages	Plain Text / Acoustic Signal

## Enclosed Parts

Items	Processor Box, Transport Box, Adapter 0.4/0.47 cm, Instruction Manual, USB-flash memory
-------	---

## Data Recording-Polymatic Plus

Number of reports	1000
Interface	USB (USB-flash memory included)
Data format	PDF / CSV

## Recorded Data

General data	Commission Number (40 digits alphanumerical) Weather (DVS) / Joint Number / Report Number
Fusion data	Voltage / Current / Nominal and Actual Welding Time / Mode / Resistance / Error Messages with 10 Voltage-Current Values
Device data	Serial Number / Inventory Number / Date of Last Service / Working Hours / System Configuration
Operator code	Barcode (PF or ISO 12176-3) for operator identification and access to manual input and system configuration
Weather condition	DVS 2207 / 2208
Welding barcode	ISO-13950

## Other Functions

Output options	Whole Memory / Comm.-No.
Commission number input/selection	Barcode, Manual, Internal List of 75 Comm.-No. for Selection

# Polymax - 110V + Bluetooth

4PM00110

## Electrofusion Processor

- BARCODE-System
- Plasson Smart-System
- MANUAL-Mode
- Data Recording with USB-Interface
- Traceability functions conform to ISO12176-3/4
- SmartFuse App compatibility
- Inverter Technology (more fusions per hour)
- Lighter weight



## Technical Specifications

ISO 12176-2 Class	P2 3 U 2 V AK D X
Input voltage	110V ~/AC, (90V-150V)
Input current	33A
Input frequency	50/60Hz (40-70Hz)
Output voltage	8-48V AC + DC
Output current	(t=∞) 40A (max. 110A)
Energy adjustment	Temperature Compensation
Power consumption	3680VA
Temperature range	14°F - 122°F (-10°C - +50°C)
Protection class	IP54
Weight incl. cables	26 Lbs (12kg)
Main supply cable	16.4 Ft (5m)
Welding cable	16.4 Ft (5m)
Welding terminals	4.0 - 4.7 mm
Display	4 x 20 Characters (alphanumeric), background lighting
Dimension	15.75" x 11.81" x 10.24" (400mm x 300mm x 260mm)

## Monitoring Functions

Input	Voltage / Current / Frequency
Output	Voltage / Current / Resistance / Contact / Short Circuit
Other	System / Working Temperature / Service
Error messages	Plain Text / Acoustic Signal

# Polymax - 240V + Bluetooth

4PM00240

## Electrofusion Processor

- BARCODE-System
- Plasson Smart-System
- MANUAL-Mode
- Data Recording with USB-Interface
- Traceability functions conform to ISO12176-3/4
- SmartFuse App compatibility
- Inverter Technology (more fusions per hour)
- Lighter weight



## Technical Specifications

ISO 12176-2 Class	P2 4 U S2 V AK D X
Input voltage	240V ~/AC, (190V-300V)
Input current	16A
Input frequency	50/60Hz (40-70Hz)
Output voltage	8-48V AC + DC
Output current	(t=∞) 40A (max. 110A)
Energy adjustment	Temperature Compensation
Power consumption	3680VA
Temperature range	14°F - 122°F (-10°C - +50°C)
Protection class	IP54
Weight incl. cables	26 Lbs (12kg)
Main supply cable	16.4 Ft (5m)
Welding cable	16.4 Ft (5m)
Welding terminals	4.0 - 4.7 mm
Display	4 x 20 Characters (alphanumerical), background lighting
Dimension	15.75" x 11.81" x 10.24" (400mm x 300mm x 260mm)

## Monitoring Functions

Input	Voltage / Current / Frequency
Output	Voltage / Current / Resistance / Contact / Short Circuit
Other	System / Working Temperature / Service
Error messages	Plain Text / Acoustic Signal

## PolyControl Plus (USB) V.2.0

3F0318V112

### PolyControl: New Controller Technology for Large Diameter Fittings

Large diameter fittings require heavy-duty processors and generators to supply the necessary power. This heavy load necessitates cooling of the transformer between welding cycles. In response to this common problem, Plasson has developed a new processor, with integral cooling and novel power transformer technology to reduce cycle time to a minimum.

Allows at least 4 successive welding cycles, without pause, efficient in hot and cold weather. Only 10 minutes cooling required after 7,000 seconds of welding.



### Technical Specifications

Plasson PolyControl Plus (USB) V.2.0

ISO 12176-2 Class	P2 3 U S1 V AK D X
Input voltage	220V ~/AC, (185V-300V)
Input current	16A
Input frequency	50Hz (40-70Hz)
Output voltage	8-48V DC
Output current	(t=∞) 85A (max. 110A)
Energy adjustment	Temperature Compensation, Inductivity compensation
Power consumption	3600VA
Temperature range	14°F - 122°F (-10°C - +50°C)
Protection class	IP54
Weight incl. cables	34 Lbs (15.5kg)
Welding Terminal	4.0 - 4.7 mm



Turn your PLASSON Processor Box into the ultimate welding machine with our **new Smartphone App.**



## Available now

Features of the Free Upgrade

- ✓ **Smartphone control** of your box, with no mobile network coverage needed
- ✓ **Improved quality control** with guided welding process and photo capture of crucial steps (kept with the weld record)
- ✓ **Data recording** including physical location of each weld
- ✓ Ability to **identify installer** of each weld
- ✓ Ability to **weld all fittings\***



Smarter fusion  
with PLASSON.



\*Monomatic Control Boxes will be limited to emergency welds of other fittings

## Plasson Processor Box Dynamic

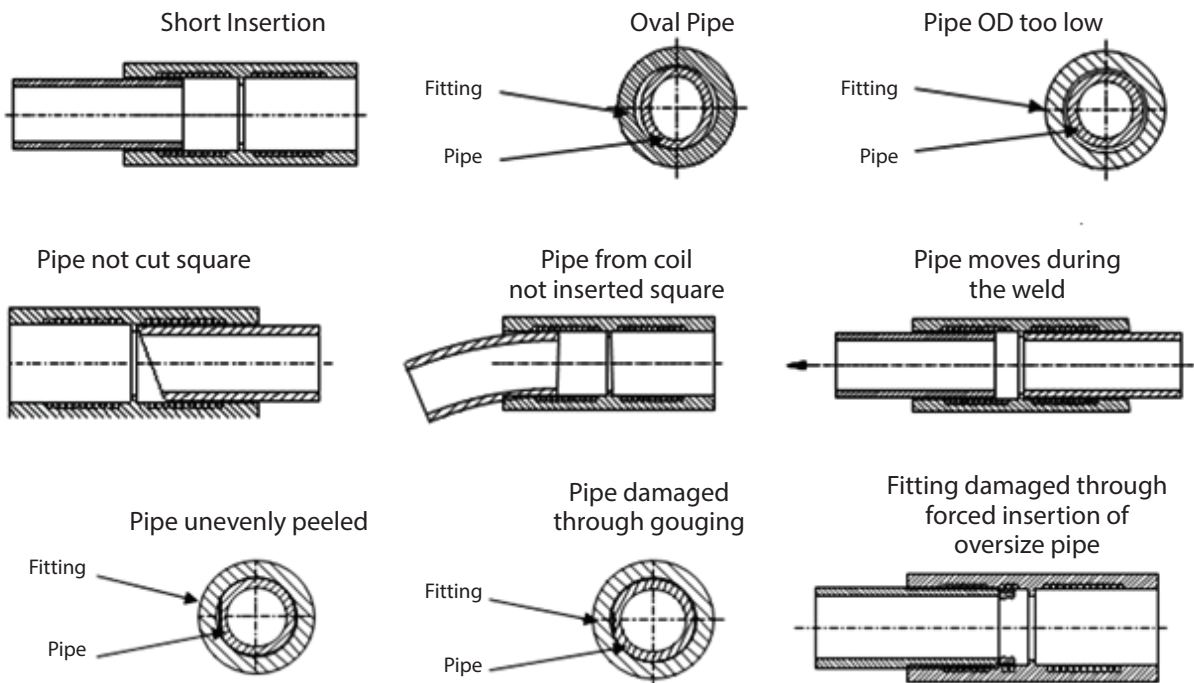
Plasson processor boxes dynamically monitor the weld process when used with Plasson ElectroFusion fittings.

- Dynamic monitoring - By continually monitoring the weld current, it will shut down if the current increases above the dynamic tolerance range, thereby avoiding the overheating and anti-oxidant depletion of PE materials which can adversely affect long-term weld integrity.
- Generator variability tolerance are tolerant to generator variability as they accept a large voltage range and frequency variation.
- Numerous servicing centers for PF welding equipment are available.

### What can go wrong?

Without dynamic monitoring, faults may occur unnoticed during the weld process causing the fitting to fail once in general use. Common causes of this can be seen in the diagram below.

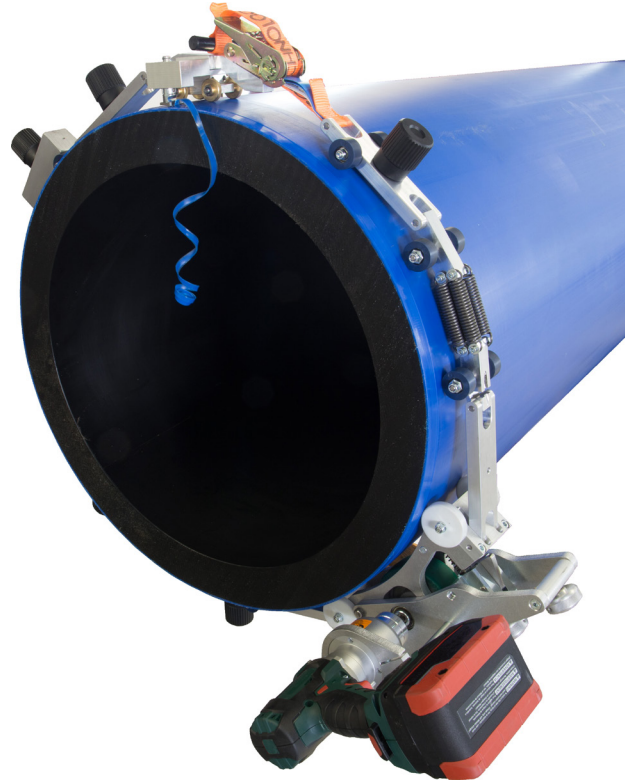
## Typical Electrofusion Welding Faults



### Please note:

We will not carry out this dynamic monitoring process on other manufacturers' fittings.

# Battery Powered Chain Peeler



- ✓ Reduce pipe peeling time by almost 75%
- ✓ A new battery powered solution for the fast, more efficient and reliable preparation of large bore PE pipe for electrofusion welding.
- ✓ For use on 14" DIPS to 32" IPS, with an optional extension, replaces hand powered tools to remove the oxidised and contaminated outer layer on PE pipe by peeling a consistent 0.007 to 0.010mm layer from the pipe surface.  
A version for pipe 30" DIPS - 48" DIPS is also available.  
Optional extension to 63" IPS/60" DIPS available.
- ✓ The chain peeler is designed to work with challenges of ovality, flatness and varying pipe wall thickness, resulting in very large reductions in coupler handling times.
- ✓ Supplied with two quick charge batteries.



Scan here for a look at our Electric Chain Peeler!



# Take good care of your PLASSON processor box

It is recommended that processor boxes are serviced every 24 months or 400 hours of operation\*

\*The timing for recalibration of the Plasson processor box begins when the processor box is used for its first electrofusion.



Frequent servicing of your processor box reduces the risk of operational problems interrupting the work flow and costing you money.

## A standard service includes:

- Installation of latest software
- Inspection and testing of all components
- Calibration Certificate
- Replacement of wear & tear components, as necessary
- Recalibration Certificate
- ***All Plasson processor recalibrations and repairs are done in-house at our Sugar Land, TX facility in 3-5 business days!***

## Manual Saddle Peeler

4\_4200\_060 | 4" IPS and larger



## Pipe End Peelers

4\_4200\_015 | 3" IPS - 6" DIPS

4\_4200\_027/1 | 3" IPS - 10" DIPS

4\_4200\_016 | 8" IPS - 14" DIPS

4\_4200\_050 | Pipe End Peeler w/ SQ Drive 3" IPS - 6" DIPS

4\_4200\_051 | Pipe End Peeler w/ SQ Drive 3" IPS - 10" DIPS

4\_4200\_062 | 4" IPS - 18" DIPS Pipe End Peeler



## Rotational Peelers

4\_4200\_001 | 1/2" IPS - 2" IPS

4\_4200\_031 | 1/2" IPS - 4" DIPS

4\_4200\_032 | 3" IPS - 8" IPS

4\_4200\_033 | 4" IPS - 10" DIPS



## Chain Peelers

4\_4200\_013 | 4" - 16" IPS

4\_4200\_008 | 20" IPS - 30" Extension Kit

4\_4200\_009 | 10" - 30" IPS / 10" - 24" DIPS

4\_4200\_012 | 32" - 48" IPS / 30" - 42" DIPS

4\_4200\_029 | 10" - 36" IPS

4\_4200\_010 Extension Kit for 30" DIPS - 36" DIPS



## U-Peelers

4\_4800\_060 | 2" IPS U-Peeler

4\_4800\_088 | 3" IPS U-Peeler

4\_4800\_114 | 4" IPS U-Peeler

4\_4800\_168 | 6" IPS U-Peeler

4\_4800\_219 | 8" IPS U-Peeler

4\_4800\_273 | 10" IPS U-Peeler

4\_4800\_323 | 12" IPS U-Peeler

4\_4800\_121 | 4" DIPS U-Peeler

4\_4800\_175 | 6" DIPS U-Peeler

4\_4800\_229 | 8" DIPS U-Peeler

4\_4800\_281 | 10" DIPS U-Peeler

4\_4800\_335 | 12" DIPS U-Peeler



## Pipe End Peelers with Mandrels

---

- 4\_4200\_103 Pipe end peeler 3/4" IPS - 2" IPS w/mandrels
- 4\_4200\_S103 Pipe end peeler 3/4" IPS - 2" IPS w/mandrels+cordless drill



## Electric or Battery Operated Peelers

---

- 4\_4200\_025 | Electric peeler for saddles 110V
- 4\_4200\_046 | Battery operated electric peeler for saddles (110 V charger)
- 4\_4200\_026 | Battery Operated Saddle Peeler 230V



- 4\_4200\_040 | Battery operated chain peeler for EF couplings 14" DIPS-32" IPS (110V)
- 4\_4200\_041 | Battery operated chain peeler for EF couplings 30" DIPS-48" IPS (110V)
- 4\_4200\_036 | Battery Operated Chain Peeler 14" DIPS – 32" IPS, Includes 2 Batteries & 1 Charger (230V)
- 4\_4200\_037 | Battery Operated Chain Peeler 30" DIPS – 48" IPS, Includes 2 Batteries & 1 Charger (230V)
- 4\_4200\_302 | Battery Operated Pipe End Peeler 16" DIPS – 40" IPS Battery Powered (110V)



## Pipe Shears

---

- 5\_3000\_007 | 1/2" CTS - 2 IPS (one hand operation)
- 5\_3000\_008 | Spare blade for 5\_3000\_007



## Pipe Cutting Tools - Rotational Pipe Cutters

---

- 4\_4400\_006 | 1" IPS - 4" DIPS
- 4\_4400\_002 | 1" - 3" IPS
- 4\_4400\_004 | 4" IPS - 8" DIPS
- 4\_4400\_005 | 4" IPS - 10" DIPS



## Pipe Cutting Tools - Electric Saw

---

- 4\_4401\_006 | 8" IPS – 16" IPS Rotary Pipe Cutting Saw (110V) w/ Shavings Collection Anti-Static Bag
- 4\_4401\_001 | 20" IPS – 42" DIPS Rotary Pipe Cutting Saw (230V) 3.35" Cutting Depth



## Guillotine Pipe Cutter

4\_4400\_010 | 3" IPS - 8" IPS / 3" - 6"DIPS



## Pipe Clamping Tools

4\_4300\_000 | 1/2" IPS - 2" IPS



4\_4300\_001 | 1" IPS - 4" IPS

4\_4300\_002 | 4 IPS - 8 DIPS

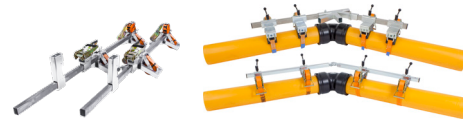
4\_4300\_009 | 2"IPS - 8"DIPS EF Coupling/Elbow Adjustable Pipe Clamp



4\_4300\_023 | 4" IPS - 22" IPS Strap Clamp with 4 Clamps and 1 Angle Piece

4\_4300\_025 | 2" IPS - 10" IPS Strap Clamp

4\_4300\_026 | 10" IPS - 30" IPS Strap Clamp with Puling Shoes



4\_4301\_001 | Single Sided Ball Joint for EF Adjustable Elbow, Clamp 4" - 22"

4\_4301\_011 | Double Sided Ball Joint for Adjustable Elbow, Clamp 1" - 4", 2" - 8"

4\_4301\_002 | Double Sided Ball Joint for EF Adjustable Elbow, Clamp 4" - 22"



## Pipe Rollers and Supports

4\_4601\_001 | 12" DIPS max. with rubber roller



4\_4601\_003 | 10" DIPS max. support



4\_4300\_026 | 10" DIPS max. support for workbench incl. adaptor 32 mm



## Chamfering Tools

5\_3004\_002 | 2" IPS - 8" DIPS  
079600063020 | 1/2" IPS - 2" IPS



## Re-Rounding Tools

- 4\_4602\_005 | 2" IPS - 6" DIPS
- 4\_4602\_003 | 4" IPS - 8" IPS
- 4\_4602\_004 | 6" DIPS - 12" IPS
- 4\_4602\_009 | 10" IPS - 16" IPS



- 4\_4602\_017 | 16" DIPS - 28" IPS  
Hydraulic rounding tool
- 4\_4602\_018 | 28" IPS - 48" DIPS  
Extension Kit for 4\_4602\_017
- 4\_4602\_019 | 16" DIPS - 48" DIPS  
Hydraulic rounding tool



## Size Specific Re-Rounding Tools

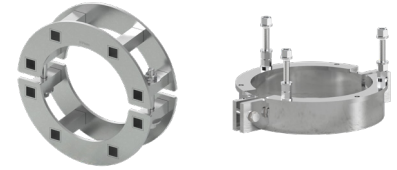
4\_4602\_160 | Re-Rounding Circle Clamps

**(Heavy Duty w/ two tightening screw)**

- 4\_4602\_088 | 3" IPS Re-Rounding Ring
- 4\_4602\_114 | 4" IPS Re-Rounding Ring
- 4\_4602\_168 | 6" IPS Re-Rounding Ring
- 4\_4602\_219 | 8" IPS Re-Rounding Ring
- 4\_4602\_273 | 10" IPS Re-Rounding Ring
- 4\_4602\_323 | 12" IPS Re-Rounding Ring
- 4\_4602\_406 | 16" IPS Re-Rounding Ring

**(Low Profile w/ one tightening screw)**

- 5\_3006\_060 | 2" IPS Re-Rounding Ring
- 5\_3006\_088 | 3" IPS Re-Rounding Ring
- 5\_3006\_114 | 4" IPS Re-Rounding Ring
- 5\_3006\_168 | 6" IPS Re-Rounding Ring
- 5\_3006\_219 | 8" IPS Re-Rounding Ring



## EF Wipes

8110FW0025 | EF Cleaning wipes 6" x 9" 100 count



## EF Accessories

- 2\_4701\_036 HVTT T-Handle Wrench w/ 5/8" Hex
- 2\_4701\_035 Std. TT-Handle Wrench w/12mm Hex
- 2\_9202\_000 Std. TT Hex Key Wrench 1/2" Socket Drive w/12mm Hex
- 2\_4701\_039 HVTT Hex Key Wrench 1/2" Socket Drive w/ 5/8" Hex



- 2\_0300\_017 4.7mm to 4.0mm EF Adapter Tips – Straight (1 Pair)
- 2\_0300\_001 4.7mm to 4.0mm EF Adapter Tips – Angled (1 Pair)
- 2\_0300\_004 4.0mm to 4.7mm EF Adapter Tips – Angled (1 Pair)



- 1\_2800\_026 Polycontrol Plus EF Flight Case
- 1\_2800\_033 Polymatic Plus EF Flight Case
- 1\_2800\_000 Transport Box PE, Orange 2nd Generation



## Qualification of Plasson Electrofusion Fittings for Gas Distribution

### Standards:

- ASTM D2513-08b: Standard Specification for Thermoplastic Gas Pressure Pipe, Tubing, and Fittings
- ASTM F1055-98(2006): Standard Specification for Electrofusion Type Polyethylene Fittings for Outside Diameter Controlled Polyethylene Pipe and Tubing

### Assessment Requirements:

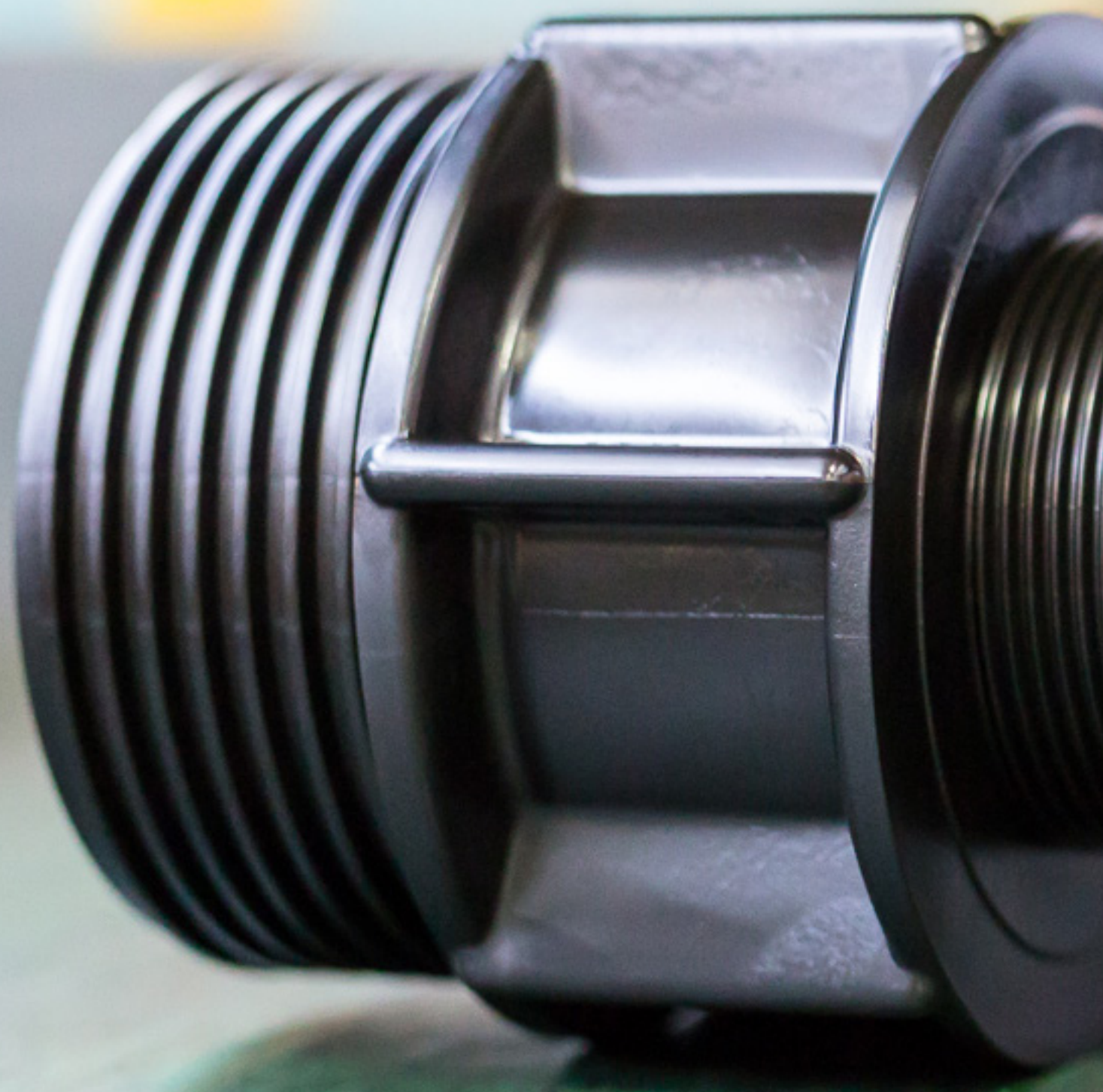
- Review and approval of new product test and validation plans
- Completion of 2 on-site quality audits of the test laboratory and manufacturing facility
- Verification of Plasson's capabilities to perform testing per ASTM F1055 and ASTM D2513
- Audit of Plasson's new product qualification data

### Results:

Based on this assessment, Jana attests that Plasson maintains:

- An ISO 9001:2000 Quality System covering manufacturing, design and testing certified by the Standards Institute of Israel
- Sophisticated manufacturing and information systems with complete raw material traceability; each serialized part is traced through manufacturing, testing and delivery
- A rigorous approach to in-process and batch release Quality Control testing in accordance with ASTM F1055 and ASTM D2513
- A comprehensive new product test plan to verify fitting performance per the requirements of ASTM F1055 and ASTM D2513
- A resin supply per the requirements of ASTM F1055 and ASTM D2513 and listed per PPI TR-4 as PE 4710
- A comprehensive validation plan with PE 2406, PE 3408 and PE 4710 pipe

**Based on this assessment, Jana attests that electrofusion fittings manufactured by Plasson are in conformance with ASTM F1055 and ASTM D2513.**





## Line 7

### 0701M0

Page 52 | Couplings



### 0706M0

Page 57 | 45° Elbows



### 0711M0

Page 52 | Reducing Couplings



### 0785M0

Page 57 | 90° Elbows w/ Threaded Male Offtake



### 0702M0

Page 53 | Male Adapters



### 0785M0

Page 58 | 90° Elbows w/ Threaded Female Offtake



### 0702M0T

Page 53 | Male Adapters



### 070170M0

Page 58 | Plass4 (Universal) Couplings for HDPE Pipe



### 0703M0

Page 54 | Female Adapters



### 17610

Page 59 | Universal Slip Repair Couplings



### 0703M0T

Page 54 | Female Adapters



### 1630ME, 1630MPT

Page 60 | Plassaddle ACME Threads  
Plassaddle NPT Threads



### 0712M0

Page 55 | End Caps



## Valves

### 03801

Page 61 | Pressure Reducing Valves



### 0704M0

Page 55 | 90° Tees



### 0220

Page 61 | Universal Pressure Regulators



### 0734M0

Page 56 | 90° Reducing Tees



### 03703T

Page 62 | Ball Valves



### 0705M0

Page 56 | 90° Elbows



### 536207

Page 62 | PE Ball Valves



## Valves Cont.

03047

Page 63

Angle Seat Valve (Seal NBR)  
Threaded Inlet & Outlet



03039

Page 63

Quick Couplings  
Valve (SEAL NBR)



03139

Page 63

Key for Quick Coupling  
Valve 3039



## Accessories for Compression Fittings

07990

Page 64

Plasson Wrench



07960

Page 64

Chamfer Tool for  
PE Pipes



Page 65

Technical Specifications

Page 66

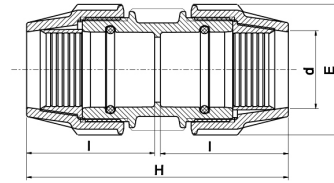
Assembly Instructions

Page 67

Installation Instructions

## Coupling

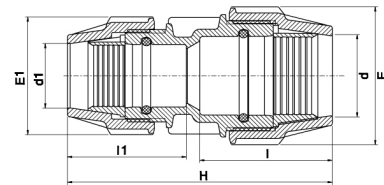
0701M0



Product Code	Size d x d	E	H	I	UB	UC	W
0701M0005	½ x ½	1.89	4.76	2.28	10	200	0.20
0701M0007	¾ x ¾	2.13	4.92	2.36	10	180	0.26
0701M0010	1 x 1	2.52	5.71	2.76	5	100	0.42
0701M0013	1¼ x 1¼	3.23	6.97	3.39	—	75	0.72
0701M0015	1½ x 1½	3.78	7.91	3.86	—	45	1.05
0701M0020	2 x 2	4.45	9.06	4.41	—	30	1.60
0701M0030	3 x 3	5.98	13.35	6.30	—	10	4.32
0701M0040	4 x 4	7.12	15.74	7.68	—	5	6.34

## Reducing Coupling

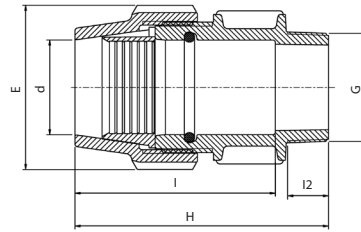
0711M0



Product Code	Size d x d1	E	E1	H	I	I1	UB	UC	W
0711M0007005	¾ x ½	2.13	1.89	4.69	1.89	4.69	10	200	0.23
0711M0010005	1 x ½	2.52	1.89	5.31	1.89	5.31	5	150	0.31
0711M0010007	1 x ¾	2.52	2.13	5.16	2.13	5.16	5	120	0.34
0711M0013007	1¼ x ¾	3.23	2.13	6.10	2.13	6.10	—	90	0.51
0711M0013010	1¼ x 1	3.23	2.52	6.10	2.52	6.10	—	90	0.56
0711M0015013	1½ x 1¼	3.78	3.23	7.17	3.23	7.17	—	60	0.88
0711M0020007	2 x ¾	4.45	2.13	7.36	2.13	7.36	—	50	1.02
0711M0020010	2 x 1	4.45	2.52	7.83	2.52	7.83	—	45	1.07
0711M0020013	2 x 1¼	4.45	3.23	8.23	3.23	8.23	—	40	1.20
0711M0020015	2 x 1½	4.45	3.78	8.46	3.78	8.46	—	36	1.29
0711M0030020	3 x 2	5.98	4.45	11.10	5.98	4.33	—	14	3.18
0711M0040030	4 x 3	7.13	5.98	14.84	7.68	6.38	—	6	5.61

## Male Adapter

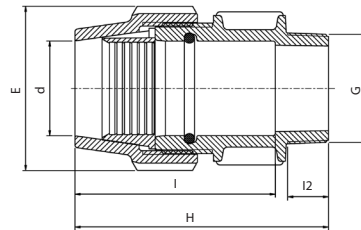
0702M0



Product Code	Size d x G	E	H	I	I2	UB	UC	W
0702M0005005	½ x ½ M	1.89	3.58	2.76	0.67	10	350	0.13
0702M0005007	½ x ¾ M	1.89	3.62	2.76	0.71	10	350	0.14
0702M0007005	¾ x ½ M	2.13	3.74	2.83	0.67	10	250	0.15
0702M0007007	¾ x ¾ M	2.13	3.74	2.83	0.71	10	250	0.17
0702M0010007	1 x ¾ M	2.52	4.09	3.23	0.71	5	150	0.24

## Male Adapter

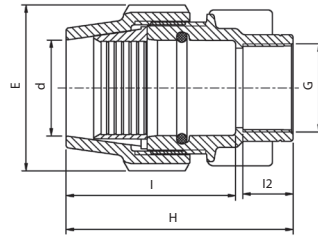
0702M0T



Product Code	Size d x G	E	H	I	I2	UB	UC	W
0702M0T10010	1 x 1 M	2.52	4.17	3.23	0.79	5	150	0.27
0702M0T13013	1¼ x 1¼ M	3.23	4.57	3.46	0.87	—	110	0.42
0702M0T15013	1½ x 1¼ M	3.78	5.20	4.45	0.87	—	70	0.58
0702M0T15015	1½ x 1½ M	3.78	5.31	4.21	0.87	—	70	0.61
0702M0T20020	2 x 2 M	4.45	6.57	5.28	1.02	—	48	1.02

## Female Adapter

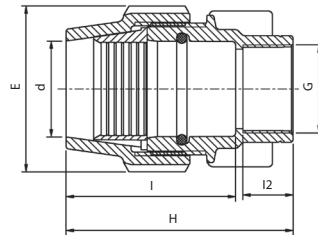
0703M0



Product Code	Size d x G	E	H	I	I2	UB	UC	W
0703M0005005	½ x ½ F	1.89	3.23	2.32	0.75	10	350	0.13
0703M0005007	½ x ¾ F	1.89	3.23	2.32	0.75	10	350	0.13
0703M0007007	¾ x ¾ F	2.13	3.50	2.52	0.83	10	250	0.18
0703M0010007	1 x ¾ F	2.52	3.35	2.48	0.75	5	150	0.24

## Female Adapter

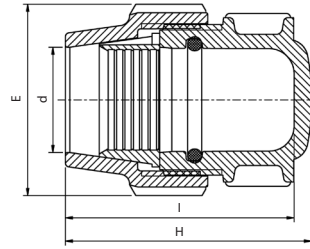
0703M0T



Product Code	Size d x G	E	H	I	I2	UB	UC	W
0703M0T10010	1 x 1 F	2.52	3.66	2.64	0.83	5	150	0.25
0703M0T13013	1¼ x 1¼ F	3.23	4.21	3.03	0.98	—	110	0.45
0703M0T15013	1½ x 1¼ F	3.78	4.72	3.50	0.98	—	75	0.61
0703M0T15015	1½ x 1½ F	3.78	4.96	3.66	0.98	—	70	0.63
0703M0T20020	2 x 2 F	4.45	5.71	4.69	1.18	—	48	0.95

## End Cap

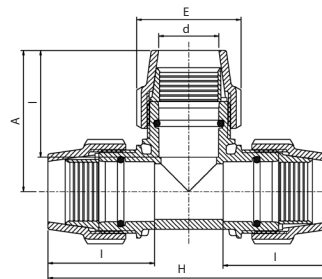
0712M0



Product Code	Size d	E	I	H	UB	UC	W
0712M0005	½	1.89	2.91	3.11	10	350	0.07
0712M0007	¾	2.13	2.99	3.23	10	250	0.17
0712M0010	1	2.52	3.19	3.43	5	180	0.231
0712M0013	1¼	3.23	3.46	3.86	—	110	0.405
0712M0015	1½	3.78	4.29	4.57	—	75	0.59
0712M0020	2	4.45	5.24	5.51	—	45	0.90

## 90° Tee

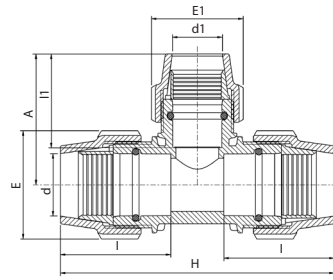
0704M0



Product Code	Size d	E	H	I	A	UB	UC	W
0704M0005	½ x ½ x ½	1.89	5.71	2.24	2.91	10	120	0.33
0704M0007	¾ x ¾ x ¾	2.13	5.98	2.24	3.03	5	100	0.42
0704M0010	1 x 1 x 1	2.52	6.89	2.56	3.46	5	60	0.66
0704M0013	1¼ x 1¼ x 1¼	3.23	8.70	3.39	4.37	—	40	1.14
0704M0015	1½ x 1½ x 1½	3.78	9.92	3.74	4.96	—	25	1.65
0704M0020	2 x 2 x 2	4.45	11.50	4.29	5.75	—	16	2.52
0704M0030	3 x 3 x 3	5.98	17.16	6.42	8.58	—	5	7.16
0704M0040	4 x 4 x 4	7.13	23.15	7.72	11.57	—	2	11.47

## 90° Reducing Tee

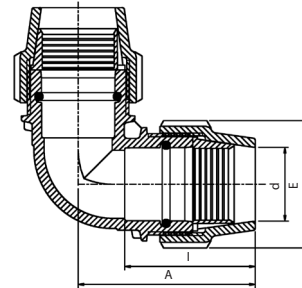
0734M0



Product Code	Size d x d1 x d	E	E1	H	I	I1	A	UB	UC	W
0734M0010007	1 x ¾ x 1	2.48	2.09	6.73	2.60	2.36	3.35	5	70	0.59
0734M0015007	1½ x ¾ x 1½	3.78	2.09	8.74	3.66	3.07	4.21	—	30	1.29
0734M0015010	1½ x 1 x 1½	3.78	2.48	8.74	3.66	2.60	4.57	—	30	1.35
0734M0015013	1½ x 1¼ x 1½	3.78	3.23	9.29	3.66	3.23	4.49	—	30	1.45
0734M0020010	2 x 1 x 2	4.45	2.48	10.47	4.41	2.60	4.57	—	20	1.97
0734M0020015	2 x 1½ x 2	4.45	3.78	10.75	4.29	3.66	5.31	—	18	2.22

## 90° Elbow

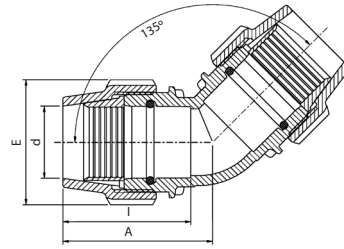
0705M0



Product Code	Size d x d	E	I	A	UB	UC	W
0705M0005	½ x ½	1.89	2.13	2.87	10	200	0.22
0705M0007	¾ x ¾	2.13	2.24	2.99	10	150	0.28
0705M0010	1 x 1	2.52	2.60	3.62	5	100	0.45
0705M0013	1¼ x 1¼	3.23	3.27	4.29	—	60	0.78
0705M0015	1½ x 1½	3.78	3.66	4.84	—	35	1.13
0705M0020	2 x 2	4.45	4.33	5.94	—	24	1.75
0705M0030	3 x 3	5.98	6.41	8.58	—	8	4.90
0705M0040	4 x 4	7.13	7.72	11.57	—	4	7.84

## 45° Elbow

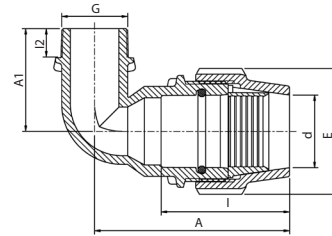
0706M0



Product Code	Size d x d	E	I	A	UB	UC	W
0706M0010	1 x 1	2.52	2.60	3.31	5	100	0.4
0706M0013	1¼ x 1¼	3.23	3.27	3.86	—	60	0.73
0706M0015	1½ x 1½	3.78	3.66	4.33	—	40	1.07
0706M0020	2 x 2	4.45	4.33	5.12	—	24	1.66
0706M0030	3 x 3	5.98	6.38	7.56	—	8	4.66

## 90° Elbow with Threaded Male Offtake

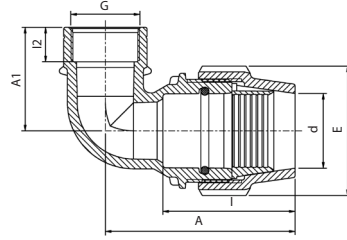
0785M0



Product Code	Size d x G	E	I	I2	A	A1	UB	UC	W
0785M0005005	½ x ½ M	1.89	2.24	0.67	2.91	1.61	10	320	0.15
0785M0007007	¾ x ¾ M	2.13	2.28	0.71	3.50	1.89	10	250	0.18

## 90° Elbow with Threaded Female Offtake

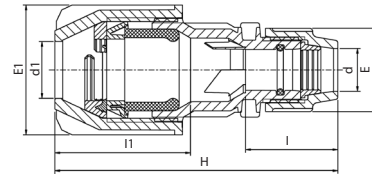
0715M0



Product Code	Size d x G	E	I	I2	A	A1	UB	UC	W
0715M0005005	½ x ½ F	1.89	2.13	0.75	3.07	1.57	10	350	0.13

## Plass4 (Universal) Coupling - For HDPE Pipe

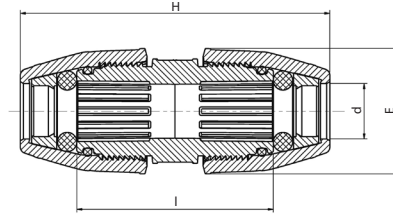
070170M0



Product Code	Size d x d1	E	E1	I	I1	H	UB	UC	W
070170M07027	¾ x 0.79 - 1.06*	2.13	2.80	2.36	3.35	6.69	1	80	0.52
070170M07035	¾ x 1.06 - 1.38*	2.13	3.27	2.36	3.54	7.09	1	60	0.67

## Universal Slip Repair Coupler

17610



Product Code	Size d inch	IPS pipe size	CTS tube size	Size d mm	H	E	L	UB	UC	W
176100014018	0.55 - 0.71	3/8	1/2	14 - 18	7.08	2.13	4.68	1		
176100019022	0.74 - 0.87	1/2	3/4, 5/8	19 - 22	7.08	2.28	4.68	1	90	0.55
176100024028	0.94 - 1.1	3/4	1	24 - 28	7.87	2.60	5.24	1	56	0.76
176100031035	1.22 - 1.37	1	1 1/4	31 - 35	8.26	2.99	5.63	1	40	1.03
176100040043	1.57 - 1.69	1 1/4	1 1/2	40 - 43	9.84	3.50	5.94	1	30	1.58
176100048051	1.89 - 2.00	1 1/2	-	48 - 51	10.63	3.98	6.22	1	20	2.13
176100060064	2.36 - 2.52	2	-	60 - 64	12.20	4.72	6.93	1	10	3.34

## This Universal Slip Repair Couplings:

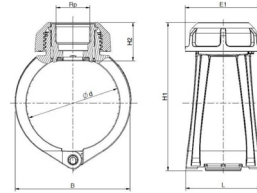
- Works on all pipe types (PE, PVC, PB, Lead, Copper, Steel).
- The smooth bore design allows pipe to slide freely inside the coupling for ease of repair of OD or ID controlled pipe SDR 9 – 11.5.
- Thick, NBR, O-ring seal at each end provides high-level seal and helps compensate for poor pipe quality.
- Seal compression increases as pressure increases.
- Robust PP body and nut – high impact strength and stress resistance.
- Long sealing area – can bridge over damaged section or gap between pipes.
- Total reliability – 230 PSI, designed to last 50 years.
- Suitable for all cold water applications up to 100°F.
- Plasson's innovative, one-of-a-kind coupling is designed, tested and quality controlled in accordance with our very strict internal standards.
- Manufactured in accordance with standards ASTM D3035, ASTM F714, AWWA C906 and NSF 61.



Scan here to see the Universal Slip Repair Coupling in action!

## Plassaddle ACME Threads

1630ME



Product Code	Size d x Rp	B	L	E1	H1	H2	Max cutting dia.
1630ME020010	2 IPS x 1 ACME	91	89	102	136	49	23.0
1630ME020013	2 IPS x 1¼ ACME	91	89	102	146	58	23.0
1630ME020015	2 IPS x 1½ ACME	91	89	102	136	49	23.0
1630ME030010	3 IPS x 1 ACME	119	94	102	163	49	24.0
1630ME030013	3 IPS x 1¼ ACME	119	94	102	173	58	24.0
1630ME030015	3 IPS x 1½ ACME	119	94	102	163	49	24.0
1630ME040010	4 IPS x 1 ACME	145	102	102	184	49	24.0
1630ME040013	4 IPS x 1¼ ACME	145	102	102	194	58	24.0
1630ME040015	4 IPS x 1½ ACME	145	102	102	184	49	24.0

\*Suitable for PE and PVC Pipes

\*Sizes 1/2", 3/4" NPT fits also ISO 7/BSP

\*ACME = special thread for "Swing Joint"

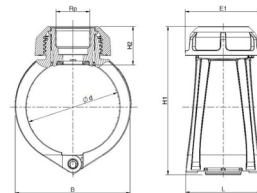
\*Pressure rating 230 psi

\*0799005 Plasson Line 7 Wrench used for Plassaddle, see page 68



## Plassaddle NPT Threads

1630MT

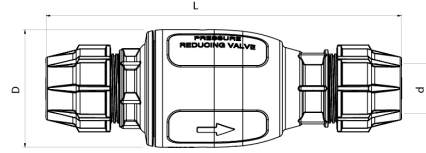


Product Code	Size d x Rp	B	L	E1	H1	H2	Max cutting dia.
1630MT020007	2 IPS x ¾ NPT	3.58	3.5	4.02	5.35	1.93	0.77
1630MT030007	3 IPS x ¾ NPT	4.69	3.7	4.02	6.42	1.93	0.77
1630MT040007	4 IPS x ¾ NPT	5.71	3.82	4.02	7.24	1.93	0.77
1630MT020005	2 IPS x ½ NPT	3.58	3.5	4.02	5.35	1.93	0.61
1630MT030005	3 IPS x ½ NPT	4.69	3.7	4.02	6.42	1.93	0.61
1630MT040005	4 IPS x ½ NPT	5.71	3.82	4.02	7.24	1.93	0.61

## Pressure Reducing Valve

03801

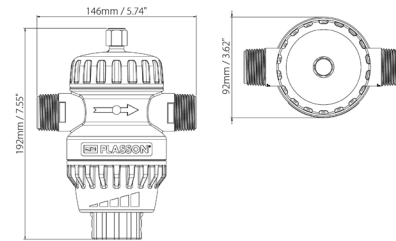
Fixed Ratio Pressure Reducing Valve



Product Code	Fixed ratio	Outlet size	D	d	Weight	UC	Pressure Rating - Water
038012M020	2:1	2 IPS	5.9	2.48	6.7	6	PN 16
038013M020	3:1	2 IPS	5.9	2.48	6.1	6	PN 16
038012M040	2:1	4 IPS	10.24	4.33	39.0	1	PN 16
038013M040	3:1	4 IPS	10.24	4.33	32.8	1	PN 16

## Universal Pressure Regulator

0220



Product Code	R	A	E	H	Weight	Inlet Pressure	Adjustable Outlet Pressure	Pressure Rating - Water
02205950	1	7.55	3.62	5.74	1.5	7.25 - 230 psi	4.5 - 60 psi	230 psi

# Ball Valve

03703T



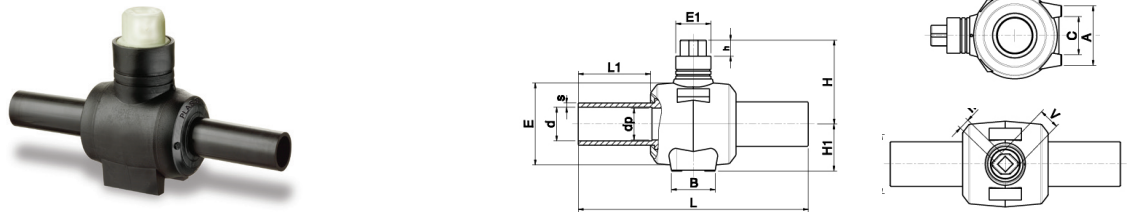
Product Code	Size (female NPT)	Optional drain port*	H	H1**	E	I	B	A1	A2	UC	W
03703T0007	3/4	1/8	3.81		2.08	0.82	1.42	1.06	2.12	72	0.37
03703T0010	1	1/8	4.57		2.52	0.83	1.81	1.30	2.52	72	0.68
03703T0013	1 1/4	1/4	4.64		2.87	0.79	2.16	1.42	2.75	48	0.85
03703T0015**	1 1/2	1/4	5.66	180	3.58	0.94	2.56	1.77	3.42	30	1.56
03703T0020**	2	1/4	6.38	180	3.94	1.14	2.95	2.09	3.82	24	2.02

\* With drain port: product code starts with 03703TF

\*\* Equipped with long handle

# PE Ball Valve

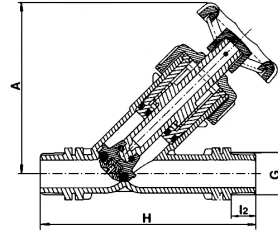
536207



Product Code	d	dp	s	D	L	L1	A	B	C	E	E1	H	H1	h	V	U	
536207010	1 IPS	24	3.3	26.6	300	100	64	50	47.8	80	70	130	48	40	50	26	708
536207020	2 IPS	48	6	48.3	418	130	83	86	53	120	84	161	76	40	50	26	2060

## Angle Seat Valve (Seal NBR) Threaded Inlet & Outlet

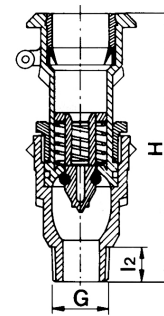
03047



Product Code	Size G x G	H	I2	A	UB	UC	W
03047056	1/2 x 1/2	5.28	0.63	4.45	5	120	0.30
03047073	3/4 x 3/4	5.94	0.71	4.76	5	100	0.42

## Quick Coupling Valve (Seal NBR)

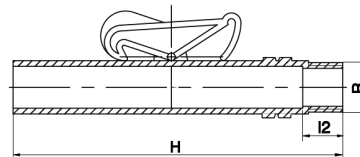
03039



Product Code	Size G	H	I2	UB	UC	W
03039037	3/4	5.75	0.67	5	130	0.32

## Key for Quick Coupling Valve 3039

03139



Product Code	Size G	H	I2	UB	UC	W
03139020	3/4	6.81	0.71	5	250	0.15

## Plasson Line 7 Wrench

07990



Product Code	Size	UB	UC	W
07990001	1/2 x 1 1/4	—	250	65
07990005	1 1/2 x 2	—	75	296
07990000	3 x 4	—	40	840

## Chamfer Tool for PE Pipes

07960



Product Code	Size	UB	UC	W
079600063020	1/2 - 2	—	64	202

## Technical Specifications

### Suitable Pipe

Plasson Fittings shown in this catalogue are suitable for use with IPS Inch size PE pipes made according to standard ASTM D 3035, ASTM F714, AWWA C906.

### Threads

The threads, male and female, fit to NPT threads.

### Operating Pressures

Plasson compression fittings up to 2" and compression stoptaps are tested and approved to PN 16 bars, according to ISO 17885 which corresponds to a working pressure of 230 psi. 3" and 4" fittings are approved for 200 PSI (14 bars).

The Quick Coupling Valve, Angle Seat Valve and the Check Valve working pressure is 120 psi (8 bars).

### Operating Temperatures

The fittings and valves are not to be used with hot water, although they withstand the same temperature as the polyethylene pipe itself. The fittings and valves will withstand sub-zero temperatures.

### Quality Assurance

Plasson's Quality Assurance System is ISO - 9001 certified.

### Materials

Compression Fittings & Valves

Body: Polypropylene, high-grade copolymer

Nut: Polypropylene, high-grade copolymer

Split Ring: Acetal (POM)

Seal: Nitrile rubber (NBR)

Check valve seal: EPDM

Check Valve Spring: Stainless steel

### Legend

All dimensions are in inches, weights in Lbs.

A, A1 Length from centerline to end of fitting

L, L1 Length

B, D, D1 Diameter

d, d1 Nominal diameter of fitting corresponding to nominal OD of pipe

E, E1 Overall diameter of compression fitting

G, G1 Nominal size of thread (inches)

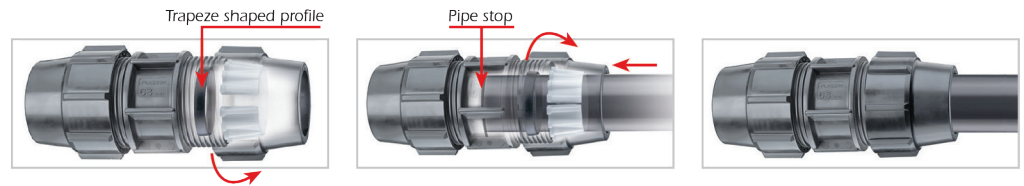
H Overall length of fitting

I, I1 Length of portion of the pipe inside the fitting

I2 Length of thread

W Weight in Lbs

## Assembly Instructions for Fittings Sizes 1/2" - 2"



- Cut the pipe square, chamfer the end of the pipe. Undo the nut to the last thread. Leave the nut on the fitting while inserting the pipe.
- Twist the pipe into the fitting\* through the split ring and rubber seal to the pipe stop. Tighten the nut firmly.
- Use a Plasson wrench (or similar tool) for final tightening of sizes 1 1/4" and above.
- The nut should be closed tightly, however there is no need for the nut to actually meet the body shoulder.

\* Lubrication of the pipe end will ease insertion of the pipe (use silicone lubricant).

**Note:** Before installation ensure:

That the end of the pipe to be inserted into the fitting is free of scratches and other imperfections and that both the pipe and the fitting itself are clean of sand, mud, stones etc. If fittings are reused, ensure split ring is sharp and bites into pipe to avoid pull outs. Alternatively replace split ring.

We strongly recommend the use of PTFE tape in threaded connections.

## Assembly Instructions for Plass 4 fittings

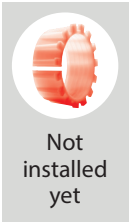


- Cut the pipe square and remove all burrs and sharp edges.
- Select correct fitting according to the external diameter of the pipe.
- Slide the PLASS4 fitting (universal side) onto the pipe, until it reaches the internal fins and a slight resistance is felt. Do not force the pipe end past the fins.
- Holding the PLASS4 body with a wrench, tighten the PLASS4 universal nut firmly with a wrench.
- Assemble the standard PE joint as per the standard fitting instructions.

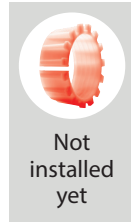
**Note:** If reusing the fitting, ensure the metal teeth are located in the grip ring and pipe end does not pass the location fins in the body.

# Installation Instructions for Compression Fittings

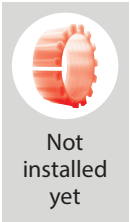
## Assembly Instructions For Fittings Sizes 3", 4"



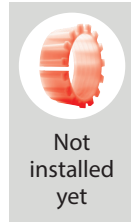
1  
Cut the pipe, square. Remove the nut and split ring. Reposition nut, bush and o-ring on pipe 2 diameters back. Lubricate pipe and o-ring.



2  
Push the pipe fully into the fitting body until stopped by the internal stop. Push the o-ring and plastic bush forward against the fitting. They will not enter the body of the fitting.



3  
Tighten nut to push the bush and o-ring right into the fitting until the bush is flush with fitting mouth.



4  
Fully unscrew nut and pull back along pipe.



5  
Open split ring and place on pipe with lugs touching bush. Reuse split rings only twice, blunt rings will not bite into pipe.



6  
Firmly tighten with Plasson C spanner. Overtightening can cause blow outs.

Do not use a wrench with handle lengths longer than standard Plasson C spanners. For 63mm: max. handle length should be 22cms. For 75-125mm: max. handle length should be 46cms.





32

MOSSY OAK

# Series 1

---

Page 72	Plasson Series 1 Features & Benefits
---------	---

---

---

Page 73	Technical Specifications
---------	--------------------------

---

## 1001Z

---

Page 74	Couplings CTS
---------	---------------



## 1001A

---

Page 74	Couplings IPS
---------	---------------



## 1011Z

---

Page 74	Reducing Couplings
---------	--------------------



## 1002Z

---

Page 75	Male Adapters CTS
---------	-------------------



## 1002A

---

Page 75	Male Adapters IPS
---------	-------------------



## 1004A6

---

Page 76	90° Tees IPS
---------	--------------



## 1003A6

---

Page 76	Female Adapters IPS
---------	---------------------



## 1003Z

---

Page 76	Female Adapters
---------	-----------------

---



## 1003ZR

---

Page 77	Female Adapters with Free Nut
---------	----------------------------------



## 10990

---

Page 77	Plasson Series 1 Wrench
---------	-------------------------



---

Page 78	Installation & Disassembly
---------	----------------------------

---

---

Page 79	PE Pipe Dimensions Chart
---------	--------------------------

---



# Introduction

---

**Plasson Series 1** - The new range of innovative fittings created by Plasson, market leader in design and manufacture of reliable fittings for polyethylene pipe systems.

**Plasson Series 1** - Plastic fitting for HDPE and PEX plastic pipes.

**Plasson Series 1** - Push-fit compression fittings, designed and tested for 14 bar /200 PSI pressure rating. Inserting the pipe up to the fitting stop creates both the seal and the grip on the pipe.

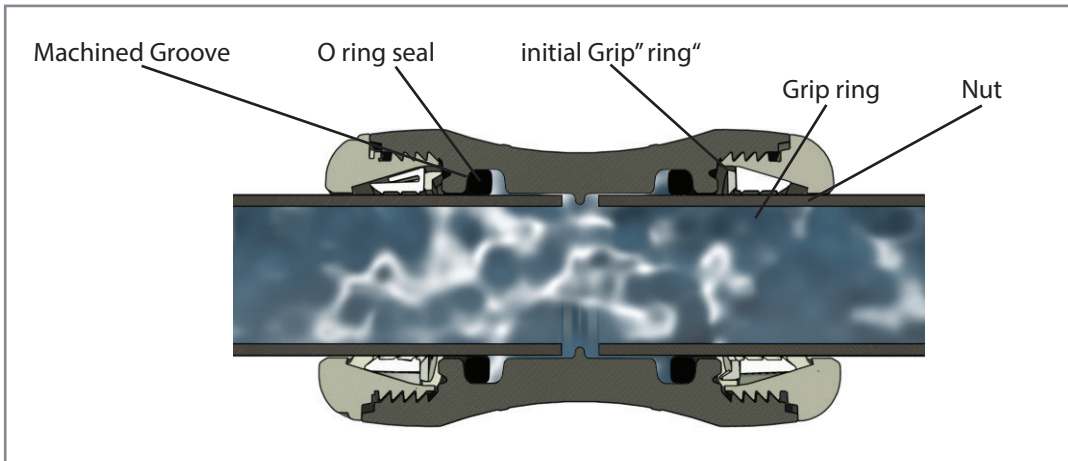
**Plasson Series 1** - Compact design makes this fitting ideal for the plumbing market, where space is limited.

Simplicity of assembly makes both the professional and occasional user's job easier while retaining the Plasson reliability.

## Plasson Series 1 features and benefits include:

---

- No assembly tools required - simple push fit assembly
- Compact size - can be assembled in confined spaces
- Instant seal and integrity of joint - captive seal and no nuts to tighten
- Full end load performance - no need to restrain joints
- No need for insert stiffeners
- Aesthetically designed fitting - gives a professional finish to the job
- 50 year design life - provides total reliability
- Tamper resistant design - ensures system integrity



Plasson Series 1 on YouTube

## Technical Specifications

### Materials

**Body, Nut:** Polypropylene, high grade copolymer

**Split Ring and Grip Ring:** Acetal (POM)

**Seal:** Nitrile rubber (NBR)

**Free nut adaptor:** Polyamide, fiber glass reinforced

### Operating Pressure (for 50 years service at full pressure)

200 PSI.

### Operating Temperatures

The fittings are designed for cold water applications, up to 114°F. (*not to be used with hot water*)

The fittings are frost resistant, and will not crack at sub-zero temperatures.

### Threads

According to ANSI B1.20.1

NPT for threaded adaptors

NPSM for free nut adaptor.

### Compatible for pipes:

HDPE, PEX: SDR 9 to 17

### NSF 61

The fittings are certified by NSF international for compliance with NSF/ANSI 61 - Drinking water system components, Health effects

\* except item 1003ZR

### Standards

Tested according to the requirements of:

- CSA B 137 (2013)

“Thermoplastic pressure piping compendium”

- ISO 17885

“Mechanical fittings for pressure piping systems”

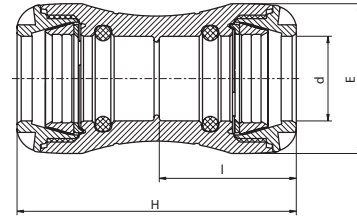
### General instructions for installation

- Before installation, ensure that the end of the pipe to be inserted into the fitting is free of scratches and other imperfections and that both the pipe and the fitting itself are free of sand, mud, stones, etc.
- Always mark the required insertion depth over the pipe, and make sure that the pipe is inserted all the way in.
- If fittings are reused, ensure that split ring and grip ring teeth are sharp and bite into the pipe to avoid pullouts. If uncertain, replace the split ring and grip ring.
- Note: We strongly recommend the use of PTFE tape in threaded connections.
- Chamfering and lubrication of the pipe end will ease insertion (use silicone lubricant).



## Coupler - CTS

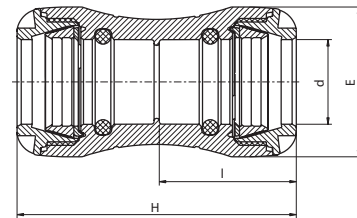
1001Z



Product Code	Size d x d	Dimensions, inch (mm)		
		H	E	I
1001Z0007	¾ CTS x ¾ CTS	98 (3.85)	47 (1.85)	48 (1.89)
1001Z0010	1 CTS x 1 CTS	108 (4.25)	58 (2.28)	54 (2.12)

## Coupler - IPS

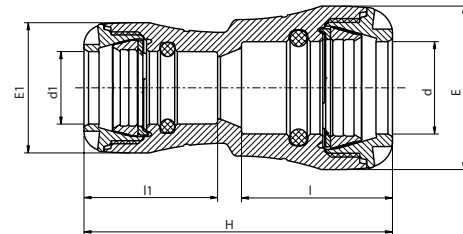
1001A



Product Code	Size d x d	Dimensions, inch (mm)		
		H	E	I
1001A6007	¾ IPS x ¾ IPS	98 (3.85)	47 (1.85)	48 (1.89)
1001A6010	1 IPS x 1 IPS	108 (4.25)	58 (2.28)	54 (2.12)

## Reducing Coupler

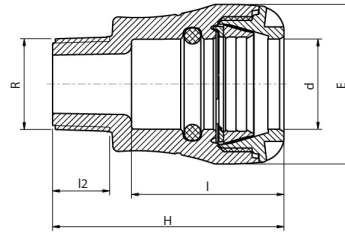
1011Z



Product Code	Size d x d	Dimensions, inch (mm)				
		H	E	I	I1	E1
1011Z0010007	1 CTS x ¾ CTS	110 (4.33)	58 (2.28)	54 (2.12)	48 (1.89)	47 (1.85)

## Male Adapter - CTS

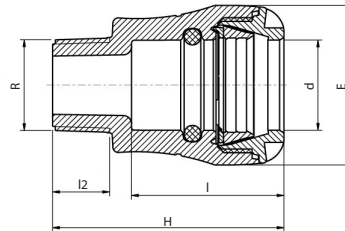
1002Z



Product Code	Size d x R	Dimensions, inch (mm)			
		H	E	I	I2
1002Z0007007	¾ CTS x ¾ NPT	76 (2.99)	47 (1.85)	48 (1.89)	17 (0.67)
1002Z0010007	1 CTS x ¾ NPT	82 (3.23)	58 (2.28)	54 (2.13)	17 (0.67)
1002Z0010010	1 CTS x 1 NPT	84 (3.31)	58 (2.28)	54 (2.13)	19 (0.75)

## Male Adapter - IPS

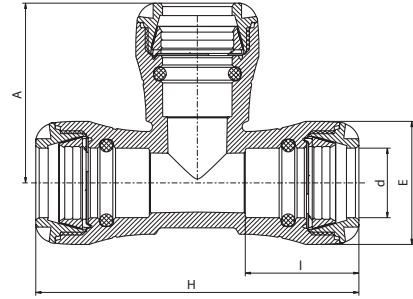
1002A



Product Code	Size d x R	Dimensions, inch (mm)			
		H	E	I	I2
1002A6T007007	¾ IPS x ¾ NPT	76 (2.99)	47 (1.85)	48 (1.89)	17 (0.67)
1002A6T010010	1 IPS x 1 NPT	84 (3.31)	58 (2.28)	54 (2.13)	19 (0.75)

## 90° Tee IPS

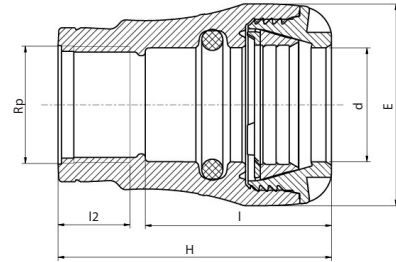
1004A6



Product Code	Size d x G	Dimensions, inch (mm)			
		H	E	A	I
1004A6007	¾ IPS	134 (5.27)	47 (1.85)	48 (1.89)	78 (3.07)
1004A6010	1 IPS	152 (5.98)	58 (2.28)	54 (2.12)	84 (3.30)

## Female Adapter IPS

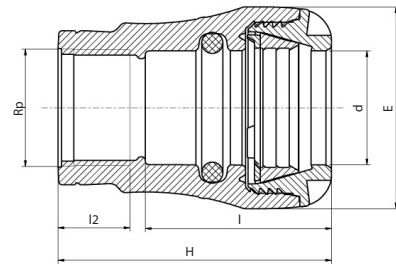
1003A6



Product Code	Size d x G	Dimensions, inch (mm)			
		H	E	I	I2
1003A6T007007	¾ IPS x ¾ NPT	47 (1.85)	100 (3.94)	18 (0.71)	48 (1.89)
1003A6T010010	1 IPS x 1 NPT	58 (2.28)	79 (3.11)	21 (0.83)	54 (2.13)

## Female Adapter

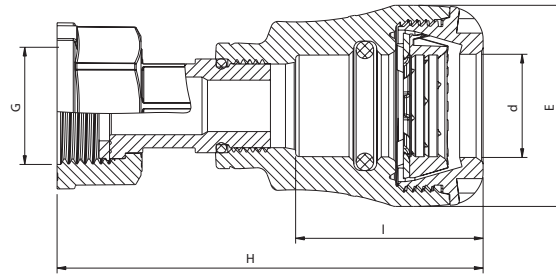
1003Z



Product Code	Size d x Rp	Dimensions, inch (mm)			
		H	E	I	I2
1003Z0007007	¾ CTS x ¾ NPT	71 (2.79)	47 (1.85)	48 (1.89)	18 (0.71)
1003Z0010010	1 CTS x 1 NPT	79 (3.11)	58 (2.28)	54 (2.13)	21 (0.83)

## Female Adapter with Free Nut

1003ZR



Product Code	Size d x G	Dimensions, inch (mm)		
		H	E	I
1003ZR007010	¾ CTS x 1 G	100 (3.94)	47 (1.85)	54 (2.13)
1003ZR010010	1 CTS x 1 G	106 (4.17)	58 (2.28)	48 (1.89)

## Plasson Series 1 Wrench

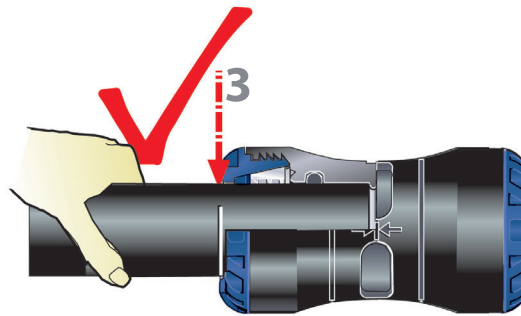
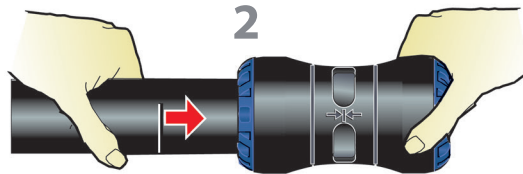
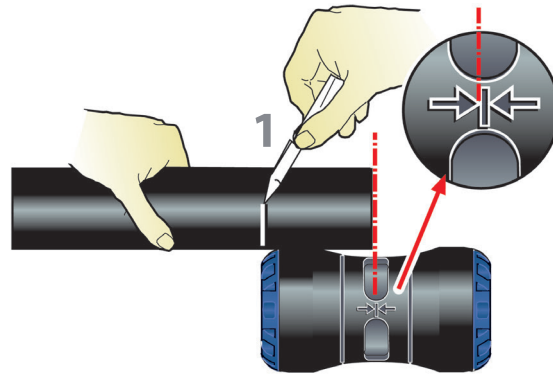
10990



Product Code	Description
10990004P	Special wrench for ¾ - 1 Series 1 nut (20-32 mm)

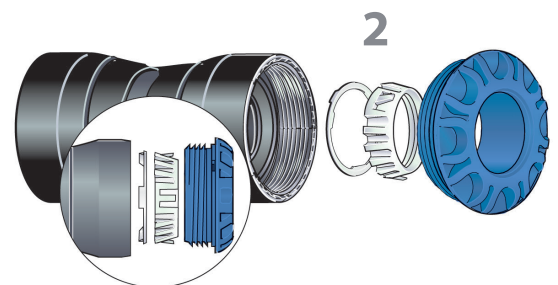
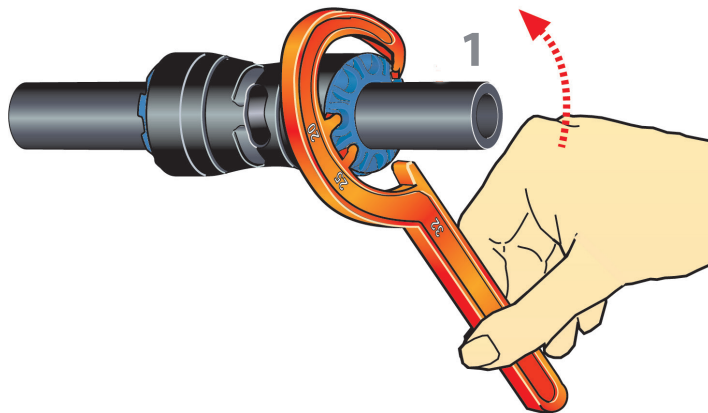
# Installation Instructions

---



# Disassembly

---



## PE Pipe Dimension Table

Nominal size IPS "imperial"	Min outside diameter- inch	Min outside diameter- for using Plasson fittings mm	Max outside diameter- for using Plasson fittings mm	Nominal size CTS- "tubing"	Min outside diameter- inch	Min outside diameter for using Plasson fittings mm	Max outside diameter for using Plasson fittings mm
½	0.84	21.2	21.4	½	0.62	15.8	16
¾	1.05	26.6	26.8	¾	0.87	22.1	22.3
1	1.32	33.3	33.6	1	1.12	28.5	28.8
1¼	1.66	42.1	42.4	1¼	1.37	34.8	35.1
1½	1.90	48.1	48.4	1½	1.62	41.1	41.4
2	2.38	60.1	60.4	2	2.12	53.8	54.1
3	3.50	88.5	89.3	PE pipe sizes according to ASTM D 2737, ASTM D 2513 -			
4	4.50	113.8	114.8				
6	6.63	167.5	169.1				
7	7.13	180.1	181.9				
8	8.63	218.1	220.1				
10	10.75	271.9	274.3				
12	12.75	322.4	325.2				
14	14.00	354.0	357.2				
16	16.00	404.6	408.2				
18	18.00	455.1	459.3				
20	20.00	505.7	510.3				
22	22.00	556.3	561.3				
24	24.00	606.9	612.3				
26	26.00	657.4	663.4				
28	28.00	708.0	714.4				
30	30.00	758.6	765.4				
32	32.00	809.1	816.5				
34	34.00	859.7	867.5				
36	36.00	910.3	918.5				
42	42.00	1062.0	1071.6				
48	48.00	1213.7	1224.7				
54	54.00	1365.4	1377.8				

PE pipe sizes according to ASTM F 714, ASTM D3035, ASTM D2513, AWWA C 906, BS1972, BS 3284

GLOBAL PRESENCE - LOCAL COMMITMENT

 **PLASSON**®

[www.plassonusa.com](http://www.plassonusa.com)

**PLASSON USA**

12520 W Airport Boulevard, Suite 600, Sugar Land, TX 77478

Tel: 1-800-241-4175 | [sales@plassonusa.com](mailto:sales@plassonusa.com)