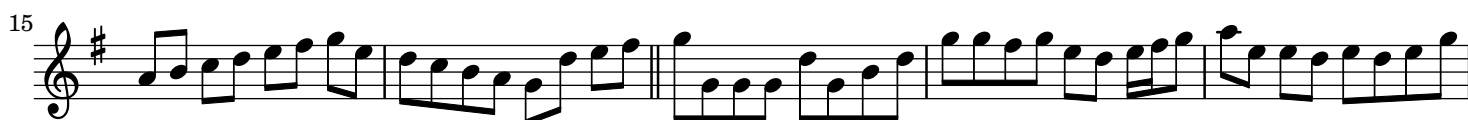


The evening star

Reel



50



55



60



The image shows three staves of musical notation in treble clef with a key signature of one sharp (F#). The first staff (measures 50-54) contains a sequence of eighth and sixteenth notes. The second staff (measures 55-59) continues the melody with similar rhythmic patterns. The third staff (measures 60-64) concludes the piece with a final note and a double bar line.

Paddy O'Brien Tune Collection. Vol. 3, disc 1, track 9. Reel 9