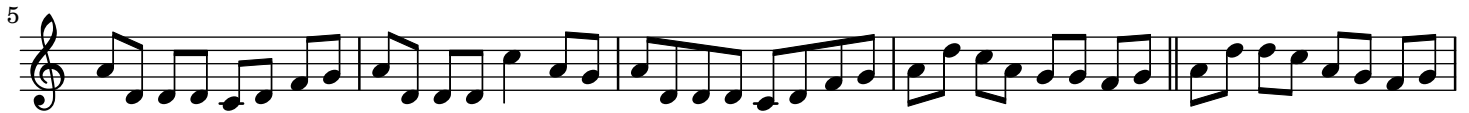


John Naughton's reel. No. 2

Reel

John Naughton



50



55



60



The image shows three staves of musical notation in treble clef. The first staff (measures 50-54) contains a sequence of eighth and sixteenth notes. The second staff (measures 55-59) continues the melody with similar rhythmic patterns. The third staff (measures 60-64) concludes the piece with a final cadence, including a double bar line at the end.

Paddy O'Brien Tune Collection. Vol. 3, disc 1, track 41. Reel 41