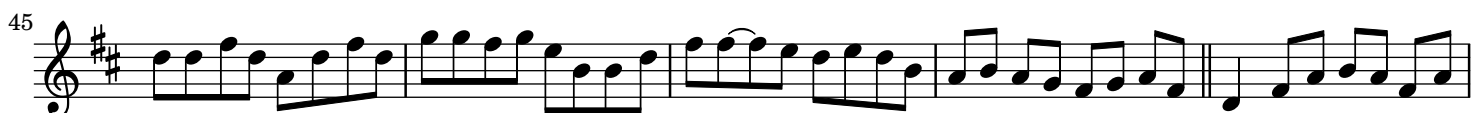


Quinn's choice

Reel



50



55



60



The image shows three staves of musical notation in treble clef with a key signature of two sharps (F# and C#). The first staff (measures 50-54) features a melody with eighth and sixteenth notes. The second staff (measures 55-59) continues the melody with similar rhythmic patterns. The third staff (measures 60-64) concludes the piece with a final cadence, including a whole note and a half note.

Paddy O'Brien Tune Collection. Vol. 3, disc 2, track 27. Reel 75