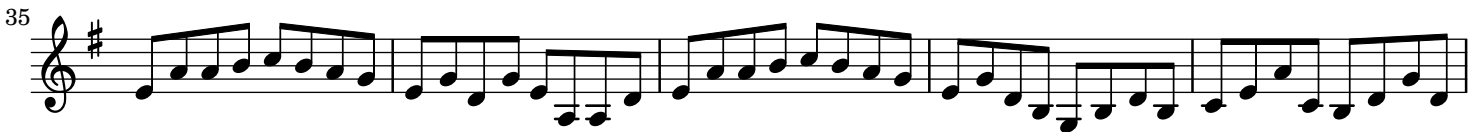


The periwig

Reel



50



55

60

The image shows three staves of musical notation in treble clef with a key signature of one sharp (F#). The first staff (measures 50-54) begins with a treble clef, a sharp sign, and a common time signature. The second staff (measures 55-59) continues the melody. The third staff (measures 60-64) concludes the piece with a double bar line. The notation includes various note values, rests, and accidentals.

Paddy O'Brien Tune Collection. Vol. 3, disc 3, track 26. Reel 122