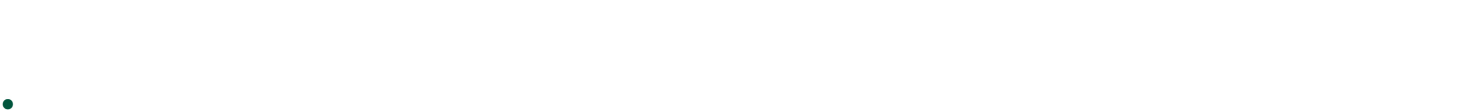
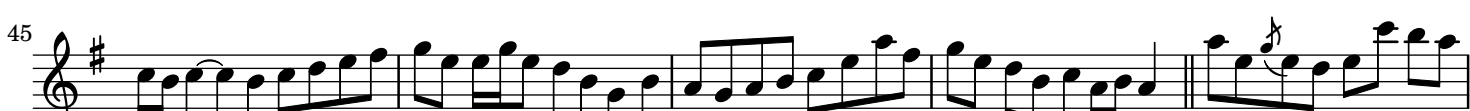


Tommy Peoples' reel

Reel



50



55



60



The image shows three staves of musical notation in treble clef with a key signature of one sharp (F#). The first staff (measures 50-54) contains a sequence of eighth and sixteenth notes with some slurs. The second staff (measures 55-59) continues the melody with similar rhythmic patterns and includes a repeat sign at the beginning of the second measure. The third staff (measures 60-64) concludes the piece with a final cadence.

Paddy O'Brien Tune Collection. Vol. 1, disc 2, track 41. Reel 98