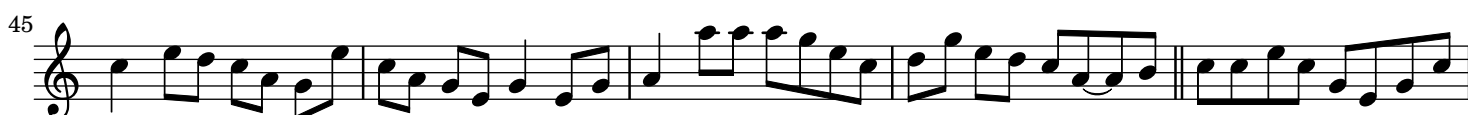


# Making the hay

Reel

Paddy O'Brien



50



55



60



The image shows three staves of musical notation in treble clef. The first staff (measures 50-54) begins with a treble clef and a common time signature. The second staff (measures 55-59) continues the melody. The third staff (measures 60-64) concludes the piece with a double bar line. The notation consists of eighth and sixteenth notes, with some rests and a final half note in the last measure.

Paddy O'Brien Tune Collection. Vol. 1, disc 3, track 54. Reel 167