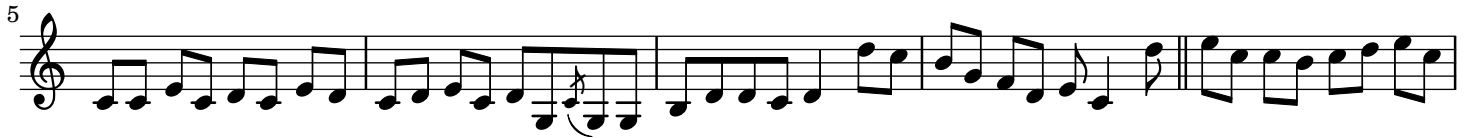


April fodder

Reel



50

55

60

65

69

The image displays five staves of musical notation in treble clef. The first staff (measures 50-54) features a sequence of eighth and sixteenth notes with some triplets. The second staff (measures 55-59) continues with similar rhythmic patterns, including a sharp sign in the fifth measure. The third staff (measures 60-64) shows a more active melodic line with frequent eighth notes. The fourth staff (measures 65-68) includes several triplet markings over eighth notes. The fifth staff (measures 69-72) concludes the piece with a final cadence, including a double bar line and a fermata over the final note.

Paddy O'Brien Tune Collection. Vol. 1, disc 4, track 13. Reel 180