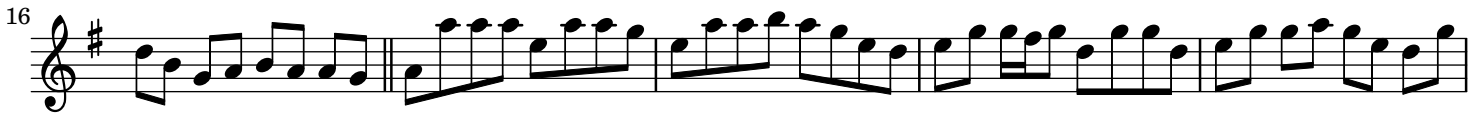


# The knotted chord

Reel



51



56



61



The image displays three staves of musical notation in treble clef with a key signature of one sharp (F#). The first staff, labeled '51', contains measures 51 through 60. The second staff, labeled '56', contains measures 56 through 60. The third staff, labeled '61', contains measures 61 through 65. The notation consists of eighth and sixteenth notes, with some beamed sixteenth notes and a final double bar line at the end of the third staff.

Paddy O'Brien Tune Collection. Vol. 1, disc 5, track 51. Reel 267