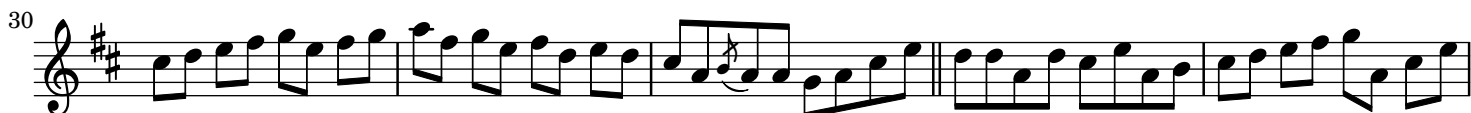


# McGoldrick's reel

Reel



50



55

60

The image shows three staves of musical notation in treble clef with a key signature of two sharps (F# and C#). The first staff (measures 50-54) contains a sequence of eighth and sixteenth notes. The second staff (measures 55-59) continues the melody with a double bar line at the end of measure 59. The third staff (measures 60-64) concludes the piece with a final double bar line at the end of measure 64.

Paddy O'Brien Tune Collection. Vol. 1, disc 6, track 12. Reel 279