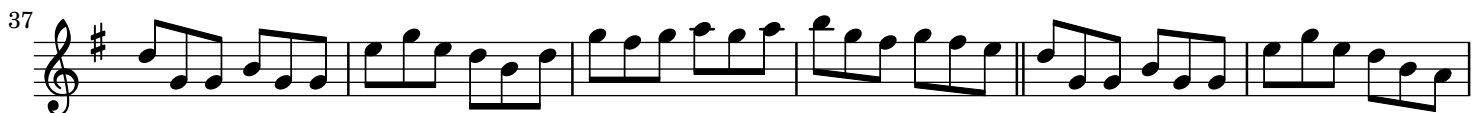


The Aherlow jig

Double Jig

Sean Ryan



61



67



73



79



85



91



The image displays six staves of musical notation for a double jig. Each staff begins with a treble clef and a key signature of one sharp (F#). The notation consists of eighth and sixteenth notes, with some measures containing rests. The piece concludes with a double bar line at the end of the sixth staff.

Paddy O'Brien Tune Collection. Vol. 1, disc 10, track 43. Double Jig 93