

Ventex Axial Fan 450M

The 450M is a robust Axial fan, designed to provide the highest possible airflow in environments where space and power are limited

Moving around four times as much as a typical 12" air-mover, the 450M is ideal for ventilating or extracting from large areas. The fan can be used in conjunction with the Wandafilta Plus units to create negative pressures and filter out dust and fumes.

It is designed to suit 450mm outlet and 500mm intake ducting.

With castor wheels and handles, the 450M is highly mobile.

Features & Benefits

- ✓ Mobile and powerful
- ✓ 10,000m³ /hr airflow
- ✓ 110v 32a
- ✓ Used with dust and fume filtration
- ✓ Ideal for high volume ventilation and extraction
- ✓ Suitable for ducting

Key Applications

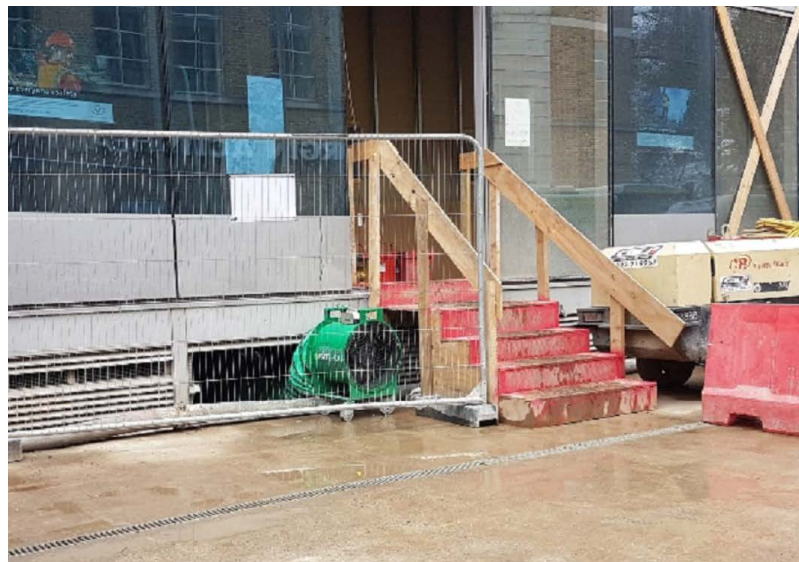
- ✓ Basement ventilation
- ✓ Portable ventilation
- ✓ This fan can be used to extract dust, toxic fumes and toxic gasses





VENTEX®

Ventex Axial Fan 450M



| Fan Unit | Ventex 450M Axial Fan |
|--------------------------|-------------------------|
| Maximum Airflow | 10,000m ³ /h |
| Outlet ducting diameter | 450mm |
| Intake ducting diameter | 500mm |
| Plug | 32a 3-pin |
| Voltage | 110v |
| Motor Size | 2.45 kW |
| Switch Type | Direct on Line |
| Start Current | 92 amps |
| Running Current | 19 amps |
| Length | 650mm |
| Width | 570mm |
| Height | 835mm |
| Generator size | 6 Kva |
| Attenuator / Attenuation | Optional |
| Weight | 50kg |
| Lifting Method | Forks / Lifting slings |

Power cable length and the need to power other equipment may influence the exact generator size required.

* Noise levels are given as a guidance only, as the location and loading of the fan will affect the final noise output. Noise levels will be at their loudest opposite the intake.

