



Product Service

CERTIFICATE

No. Z1A 17 10 21662 293

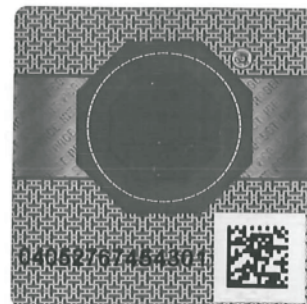
Holder of Certificate: Corocord Raumnetz GmbHHolzhauser Str. 139
13509 Berlin
GERMANY**Certification Mark:****Product:** Playground equipment**Tested according to:**DIN EN 1176-1:2008
EN 1176-1:2008
DIN EN 1176-3:2008
EN 1176-3:2008
AfPS GS 2014:01 PAK

The product meets the safety and health requirements of the German Product Safety Act section 20 to 22 ProdSG. The certification marks shown above can be affixed on the product. It is not permitted to alter the certification marks in any way. In addition the certificate holder must not transfer the certificate to third parties. This certificate is valid until the listed date, unless it is cancelled earlier. See also notes overleaf.

Test report no.: 713099282-04**Valid until:** 2022-10-17**Date,** 2017-10-25

(Jens Biesenack)

Page 1 of 2



**CERTIFICATE****No. Z1A 17 10 21662 293****Model(s):** **COR- 6214, 6226, 6300, 6330,
6400, 6500, 6600, 6690, 6700****Parameters:**

Rope net bridge made from Corocord rope with a diameter of 19 – 23 mm. Posts made from hot-galvanized steel, alternatively from splinter-free wood posts (Counts for the models 6300, 6330, 6600 and 6700).

Attached at the models could appear the following parts:
Steel-reinforced rubber straps, nets, coir rope, PP rope, wooden coverings or stainless steel slides.

COR 6214 Small suspension bridge:
W/H: 3.60/4.10 m
Max. falling height: 1.00 m

COR 6226 Large suspension bridge:
W/H: 3.60/6.00 m
Max. falling height: 2.00 m

COR 6300 Rope net bridge with coir rope:
W/H: 1.50/2.90 m
Max. falling height: 2.25 m

COR 6330 Rope net bridge with PP rope:
W/H: 1.20/1.38 m
Max. falling height: 3.00 m

COR 6400 Rope net bridge with wooden slats:
W/H: 1.20/2.75 m
Max. falling height: 1.85 m

COR 6500 Tunnel rope net bridge:
W/H: 1.20/2.75 m
Max. falling height: 2.75 m

COR 6600 Small rope net bridge:
W/H: 0.90/2.90 m
Max. falling height: 2.05 m

COR 6690 rope net bridge with slide:
W/H: 1.35/3.20 m
Max. falling height: 2.40 m

COR 6700 Large rope net bridge:
W/H: 1.50/3.50m
Max. falling height: 2.55 m

Factory(ies): 21662

Page 2 of 2