



Product Service

CERTIFICATE

No. Z2 15 03 53696 01554

Holder of Certificate: **Kompan A/S**
 C.F. Tietgens Boulevard 32C
 5220 Odense SØ
 DENMARK



Certification Mark:

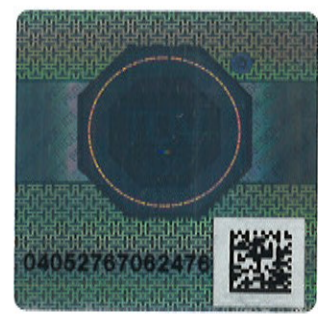


Product: **Playground equipment**

The product was tested on a voluntary basis and complies with the essential requirements. The certification mark shown above can be affixed on the product. It is not permitted to alter the certification mark in any way. In addition the certification holder must not transfer the certificate to third parties. See also notes overleaf.

Test report no.: 713036889-39

Valid until: 2020-03-15



Date, 2015-03-19
 Page 1 of 2

Harald Bardowicks
 (Harald Bardowicks)

**CERTIFICATE****No. Z2 15 03 53696 01554****Model(s):**

PCM100101, PCM100103, PCM100104, PCM100201, PCM100203, PCM100204, PCM100207, PCM100208, PCM100209, PCM100210, PCM100303, PCM100304, PCM100401, PCM100403, PCM100404, PCM100501, PCM100605, PCM100710, PCM100810, PCM100904, PCM200101, PCM200102, PCM200103, PCM200104, PCM200105, PCM200106, PCM200107, PCM200108, PCM200109, PCM200110, PCM200201, PCM200203, PCM200204, PCM200301, PCM200302, PCM200303, PCM200304, PCM200307, PCM200308, PCM200309, PCM200310, PCM200410, PCM300101, PCM300103, PCM300104, PCM300107, PCM300108, PCM300109, PCM300110, PCM400103, PCM400104

Parameters:

Combination system based on the following components:

- Posts made of Ø101,6 mm pre-galvanized and powder coated steel posts alternative Ø100 mm impregnated pine wood.
- Side panels made of 19 mm HDPE complete close, with openings in different designs, with tables, benches, moving play activities or music tubes.
- Tube elements like crossbars, tube ladders, fireman poles and climbing activities made of Ø38 mm and Ø48,3 mm. Floors made of HPL 10 mm plates or Ecogrip 18 mm plates.
- Roof made of 19 mm HDPE plates.
- Steps and ramps are made of Ecogrip 18 mm plates.
- Infill made of 2,5 mm steel plates or 19 mm HDPE.
- Net and climbing ropes made of Ø16 mm PP covered steel ropes.
- Slides made of LDPE or stainless steel.
- Crawling tunnels made of PE. Bubble window made of Polycarbonat.
- Floor heights 28, 58, 88, 118, 148 and 178 cm
Height of net and climbing activities up to 224 cm.

Tested according to:

DIN EN 1176-1:2008
EN 1176-1:2008
DIN EN 1176-3:2008
EN 1176-3:2008

Production Facility(ies):

63062

Page 2 of 2