



Year of the

TIGER - FOOD CHAINS

Tiger



Tigers are the largest of the wild cats, they have 100 cm long tails, 7 cm teeth, and can be 4m long from nose to tail!. Tigers are strong, powerful predators who hunt alone. They have thick necks and strong jaws, making them exceptional hunters capable of killing animals much bigger than themselves.

Sadly, tigers have been overhunted for a long time, and their population has declined as humans have encroached on their habitat.

Each tiger has a unique stripe pattern, with orange fur and dark stripes.



Tiger Food Chains

Tigers are Apex Predators, which means they are at the top of the food chain. There are 6 subspecies of tiger, based on where they live and slightly different characteristics. The most common type of tiger is the Bengal Tiger, which makes up about half of all wild tigers.

Print the images on the next page and create a food chain example for a Bengal Tiger living in the grasslands and one for a Bengal Tiger living in the Wetlands.

Imagine what would happen if you removed the tigers from the chain. The population of the primary consumer would increase and eat more of the plants, potentially leading to a more unstable ecosystem.

Threats to Tigers



Tigers are an endangered animal, with a population level in the wild of between 5000 and 6000. Major threats to tiger populations include poaching, loss of habitat from human development of land, and climate change.



Tiger Food Chains Answers

Wetlands
Sun - Mangrove leaves (producer) - crabs and small fish (Primary Consumer) - Wild pigs (Secondary Consumer) - Bengal Tiger (Apex Predator)

Grasslands of India
Sun - Tall Grasses (Producer) - Deer (Primary Consumer) - Bengal Tiger (Apex Predator)



Year of the
Tiger



TIGER - FOOD CHAINS



Sun



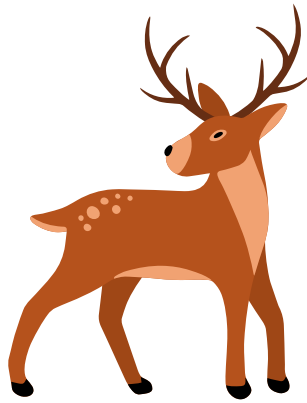
Sun



Tall Grasses



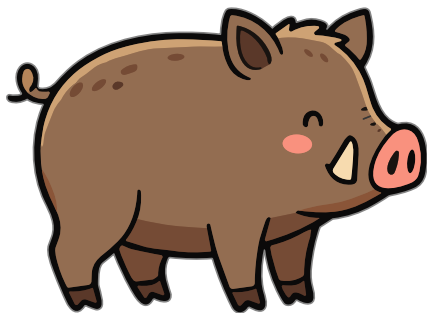
Mangrove Leaves



Deer



Crabs and small fish



Wild Pigs



Bengal Tiger

