

GSC meeting 2018



Geneva 3-4 October

WELCOME



Getting to know you

- Meet with someone new
- Finish the sentence on the screen
- Swap round
- Bell – find another partner



Getting to know you

**The place I've come from to be
here is**

Getting to know you

**3 steps in my life that got me to
where I am today**

What would be a good outcome for you?

Learning from others, sharing our expertise

Networking, relationship-building, partnerships, e.g. for research

Understand the GSC direction and mechanism

Linking different thematic areas

Build inter-cluster engagement, e.g. with IT/Telecoms

Identify and fill strategic gaps

Integration of GBV and inclusion

Settlement/ neighbourhood-based approach

Sustain funding

Agenda

Wednesday 3 October

- Update on GSC Strategy
- Advancing the GSC Strategy
 - working groups

Lunch

- Advancing the GSC Strategy
 - working groups
 - highlights
- SAG appointments
- State of Humanitarian Shelter Cluster (sneak preview)

Thursday 4 October

- Ignite - challenging our thinking
 - guest speakers
- Imagining Shelter 2020
 - issues, ideas and questions

Lunch

- Imagining Shelter 2020
 - issues, ideas and questions
 - highlights
- Reflection and wrap up

Getting to know you

The thing I'm most looking forward to today/ tomorrow is ...

Working well together



Connect

Be curious

Exchange

Keep the time

Progress since last meeting



Implementing Strategy 2018-2022

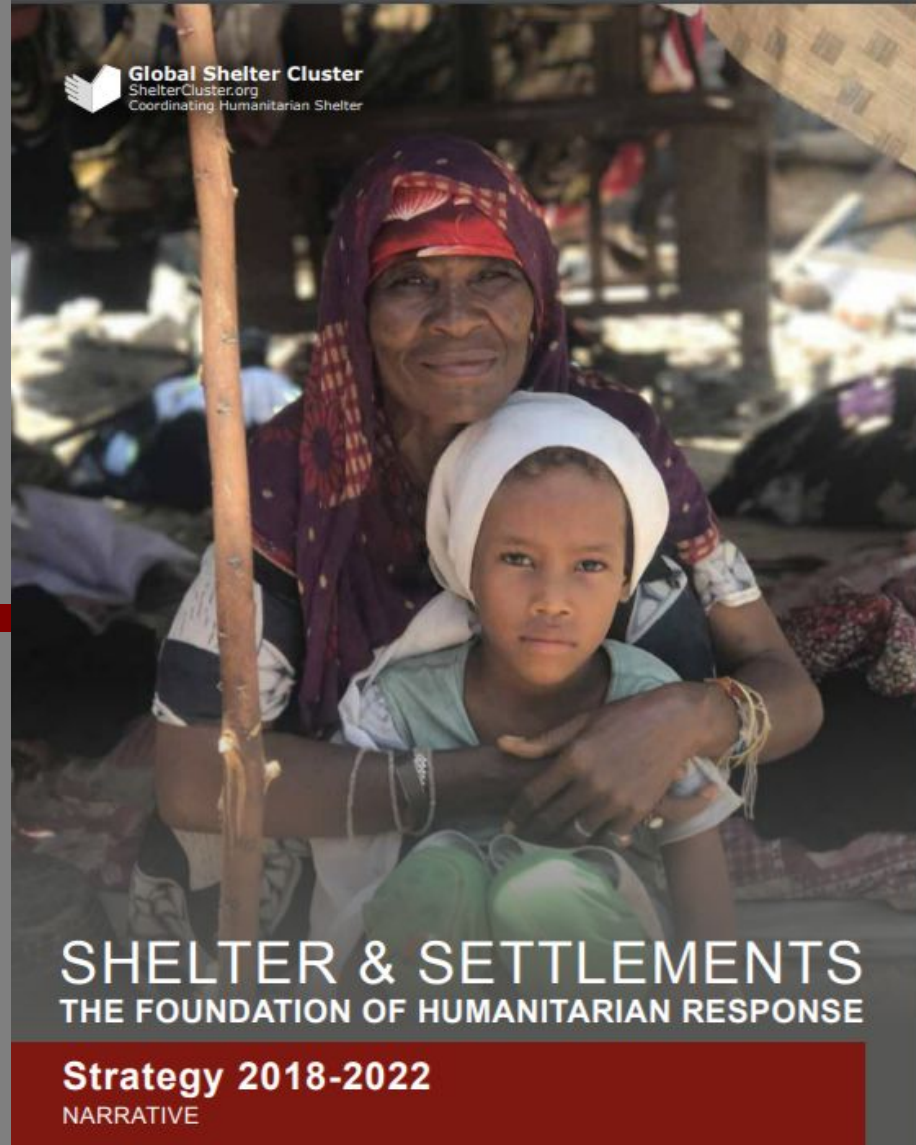
Since our last meeting...

- System-wide L3 in DR Congo
- Cyclone in Tonga, volcano in Vanuatu
- Bangladesh and Venezuela refugee crises

- **3 system-wide L3 emergencies:**
 - Syria - Idlib operation
 - Iraq
 - Yemen

GSC Strategy 2018-2022

Progress 2017-2018



AIM

**STRENGTHENED SHELTER AND SETTLEMENTS RESPONSES
THAT BUILD RESILIENT COMMUNITIES**

1



COORDINATION

Coordination contributes to a localised, predictable, effective and timely response

2



ADVOCACY

Increased recognition of shelter and settlement in humanitarian response and recovery

3



**EVIDENCE-BASED
RESPONSE**

Shelter response informed by evidence, best practice and learning

4



CAPACITY

Shelter sector capacity to address ongoing and emerging challenges

MAINSTREAMED PROTECTION, GENDER, DISABILITY AND ENVIRONMENT

Strategic Aim 1

Coordination



1.1 PREDICTABLE, TIMELY, EFFECTIVE
Support and services for Shelter Clusters

1.2 LOCALISED AND AREA-BASED
Strengthening area-based coordination and promoting settlement approaches

1.3 TRANSITION TO RECOVERY
Facilitating transition to recovery coordination, enhancing engagement with governments and development actors

1.4 INTEGRATED RESPONSE
Effective inter-cluster coordination and joint response planning approaches

mid-year 2018

26

ACTIVE CLUSTERS

363

CLUSTER PARTNERS*

\$208M

FUNDING RECEIVED

4,8 MILLION
PEOPLE SUPPORTED**



GSC support team

Global Cluster Coordinators

Deputy Coordinators

Information Management

Communication & Advocacy



Ela Serdaroglu
Natural Disasters IFRC



Brett Moore
Conflict UNHCR



Miguel Urquia
Conflict UNHCR



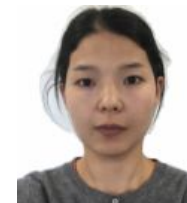
Pablo Medina
Natural Disasters IFRC



Neil Bauman
GFP IFRC/CanRC



Bo Hurkmans
IMO UNHCR



Shirin Narymbaeva
Website support IFRC

Global Focal Points for Coordination

Sr Roving Tech Coord

Assessment M&E

Grant Management



Nadia Carlevaro
GFP UNHCR



Tom Bamforth
GFP IFRC



Renee Wynveen
GFP UNHCR



Recruitment
NRC / UNHCR



Cecilia Braedt
IFRC/Lux RC



Elisabeth Vikman
REACH/Impact Initiatives



Petya Boevska
ECHO grant manager
UNHCR

Regional Focal Points

GFP - HLP

Roving IMO

Sr Roving Coord

Roving Assoc. Coord.



Gabriel Fdez del Pino
Americas
IFRC/CanRC



Federica Lisa
Asia Pacific
IFRC



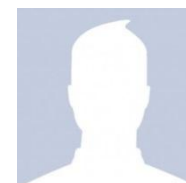
Ibere Lopes
IOM / NRC



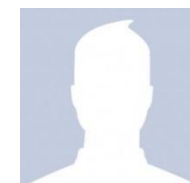
Gabriel Mathieu
UNHCR / NRC



Richard Evans
UNHCR/ IMPACT



Recruitment
UNHCR/ NORCAP



Recruitment
UNHCR/ NORCAP

Global Surge Capacity: new roles

2016

- Senior Roving Coordinators
- Roving Technical Coordinators

2017

- Roving Information Manager
- HLP Advisor

2018

- Roving Associate Coordinators

Areas to advance

1



COORDINATION

Coordination contributes to a localised, predictable, effective and timely response

1.1 PREDICTABLE, TIMELY, EFFECTIVE
Support and services for Shelter Clusters

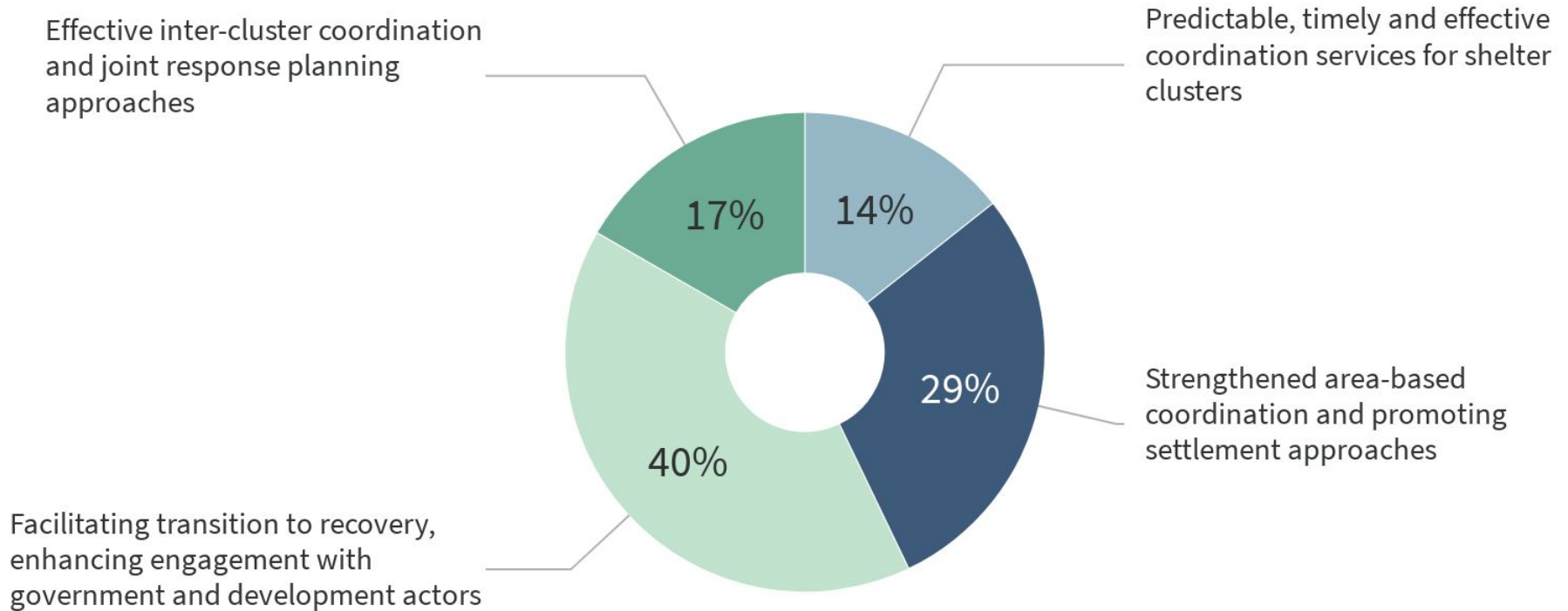
1.2 LOCALISED AND AREA-BASED
Strengthening area-based coordination and promoting settlement approaches

1.3 TRANSITION TO RECOVERY
Facilitating transition to recovery coordination, enhancing engagement with governments and development actors

1.4 INTEGRATED RESPONSE
Effective inter-cluster coordination and joint response planning approaches

Which one of these results requires more attention? (Pillar: Coordination)

Predictable, timely and effect... Strengthened area-based coordi... Facilitating transition to rec... Effective inter-cluster coordi...



Strategic Aim 2

Advocacy



Increased recognition
of shelter and
settlement in
humanitarian
response and recovery

2.1 IMPORTANCE OF SHELTER AND SETTLEMENT

Strengthened
understanding of shelter
and settlement's critical
multi-sector impact

2.2 ENGAGEMENT

Increased donor and
agency engagement and
support for shelter and
settlements sector

2.3 RESPONSE FUNDING

Critical funding
and response gaps
are monitored,
communicated
and supported

2.4 INFLUENCING

Engaging others:
appropriate urban
assistance, cash
and markets-based
programming, area-based
approaches

Key advocacy activities

- Cash Advocacy
- Events: preview of strategy at UNHCR Standing Comm
- Interaction with Governments

Areas to advance

2



ADVOCACY

Increased recognition
of shelter and
settlement in
humanitarian
response and recovery

2.1 IMPORTANCE OF SHELTER AND SETTLEMENT

Strengthened
understanding of shelter
and settlement's critical
multi-sector impact

2.2 ENGAGEMENT

Increased donor and
agency engagement and
support for shelter and
settlements sector

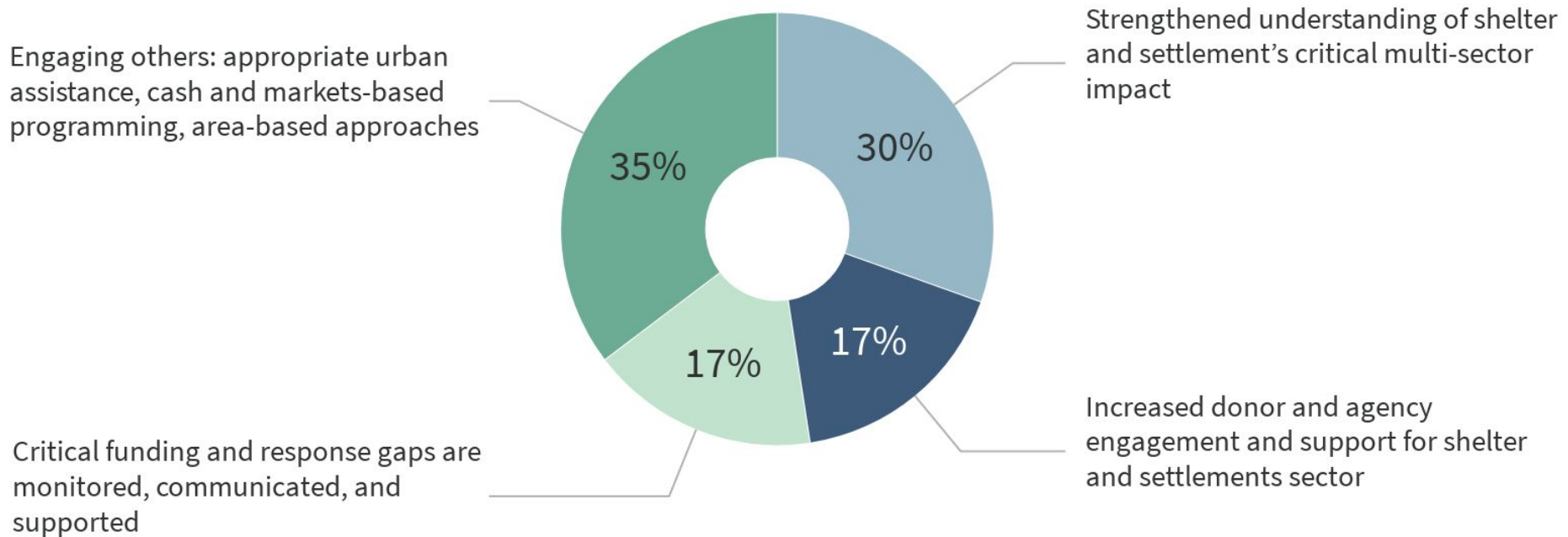
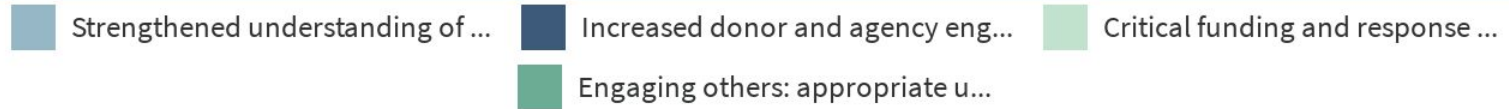
2.3 RESPONSE FUNDING

Critical funding
and response gaps
are monitored,
communicated
and supported

2.4 INFLUENCING

Engaging others:
appropriate urban
assistance, cash
and markets-based
programming, area-based
approaches

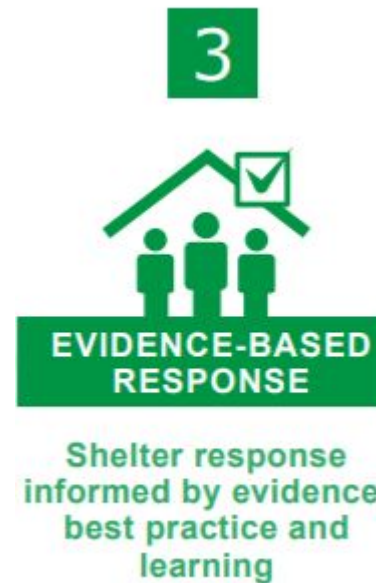
Which of these results requires more attention? (Pillar: Advocacy)



Start the presentation to see live content. Still no live content? Install the app or get help at PollEv.com/app

Strategic Aim 3

Evidence-based response



3.1 AVAILABLE AND USED

Evidence available and used to inform planning, coordination and decision-making

3.2 EVIDENCE GAPS FILLED

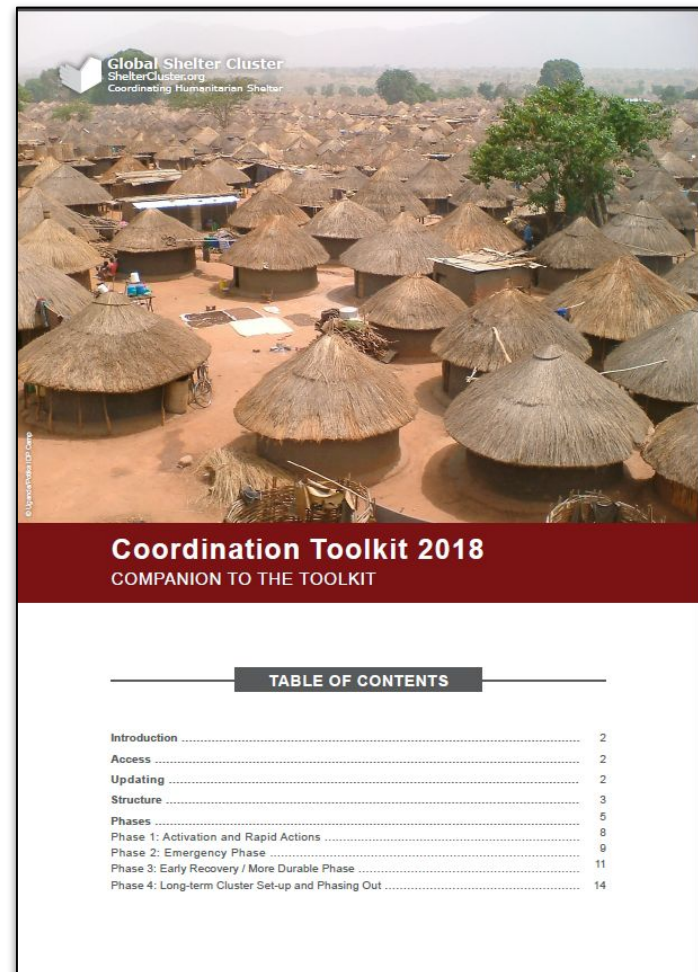
Key shelter and settlement evidence gaps filled

3.3 CAPITALISATION

Knowledge management systems in place to capitalise on lessons learned as well as best practice in order to bring about change in sector policy and practice

Progress so far

- Shelter Projects
- Long-term research
- Revised Coordination Toolkit
- Shelter Vulnerability Classification WG
- New GSC App



Areas to advance

3



EVIDENCE-BASED RESPONSE

Shelter response informed by evidence, best practice and learning

3.1 AVAILABLE AND USED

Evidence available and used to inform planning, coordination and decision-making

3.2 EVIDENCE GAPS FILLED

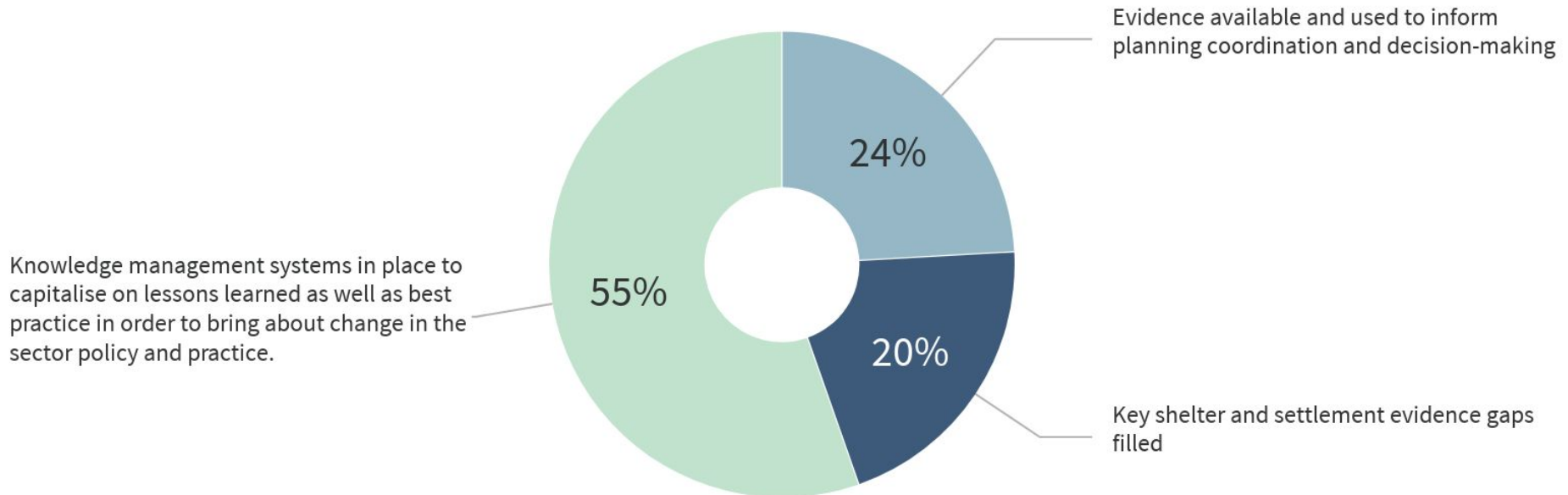
Key shelter and settlement evidence gaps filled

3.3 CAPITALISATION

Knowledge management systems in place to capitalise on lessons learned as well as best practice in order to bring about change in sector policy and practice

Which of these results is more important? (Pillar: Evidence-based Response)

■ Evidence available and used to... ■ Key shelter and settlement evi... ■ Knowledge management systems i...



Strategic Aim 4

Capacity

4



Shelter sector
capacity to address
ongoing and emerging
challenges

4.1 SKILLS

Increased and localised
shelter response
capacity

4.2 PREPAREDNESS

Country workshops and
HLP

4.3 UTILISING CASH AND MARKETS

Shelter responders
apply cash and markets
modalities appropriately

4.4 FUTURE OF SHELTER AND SETTLEMENT

Analysis of sector future
response needs and
capacity

Progress so far

- HLP Advisor
- Cash Champions
- Country preparedness workshops
- State of the Humanitarian Shelter and Settlements

Shelter Cash Champion Deployments: Updates and Lessons Learned



Bamboo transported on the river to main market in Alikadam, Bangladesh. Photo by the Joint EMMA assessment team.

*Produced by CRS as part of the Cash Champion Initiative
Under the Global Shelter Cluster Cash Working Group*



Areas to advance

4



Shelter sector
capacity to address
ongoing and emerging
challenges

4.1 SKILLS

Increased and localised
shelter response
capacity

4.2 PREPAREDNESS

Country workshops and
HLP

4.3 UTILISING CASH AND MARKETS

Shelter responders
apply cash and markets
modalities appropriately

4.4 FUTURE OF SHELTER AND SETTLEMENT

Analysis of sector future
response needs and
capacity

Which of these results is most important (Pillar: Capacity)?

Increased and localised shelte...

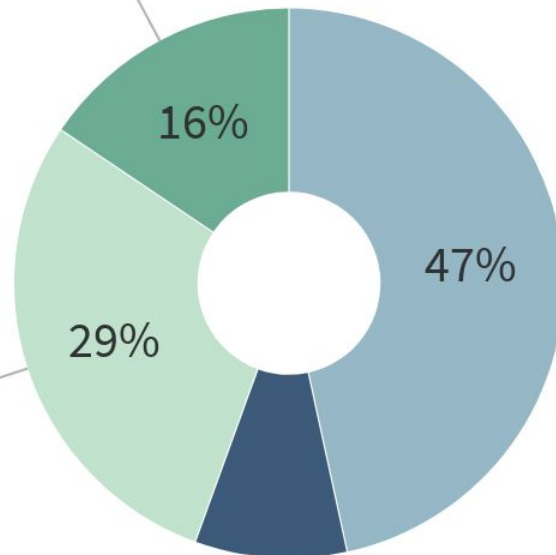
Country workshops and HLP

Shelter responders apply cash ...

Analysis of sector future resp...

Analysis of sector future
response needs and capacity

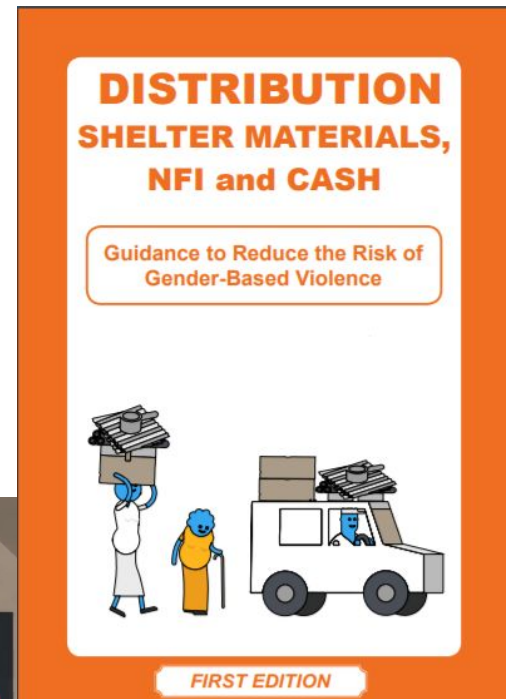
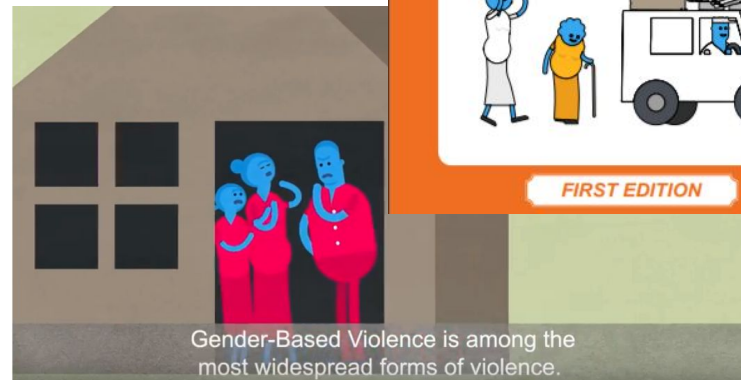
Shelter responders apply
cash and markets modalities
appropriately



Increased and localised
shelter response capacity

Good Shelter Programming

- Disability WG
- GBV and Shelter WG
- Environmental assessments and CoP



Gender-Based Violence is among the most widespread forms of violence.

Thank you!

More info:

www.sheltercluster.org

Twitter: @sheltercluster

Supported by:



Humanitarian Aid
and Civil Protection

10:30-11:00 Break



**Visit Yemen, Afghanistan,
CAR, Turkey and
Bangladesh (Cox's Bazaar)**

Advancing the GSC Strategy



Working group discussions

Advancing the GSC Strategy

11:00 Pitch!

11:30 - 13:00 - Round 1

- Shelter Projects (1)
- Promoting Safer Building (2)
- Shelter Vulnerability Classification (3)
- Shelter and Cash (4)
- Urban Settlement Approaches (9)
- Inclusion in shelter and settlements programming (main room)

13:00 - 14:30 - Lunch

14:30 - 16:00 - Round 2

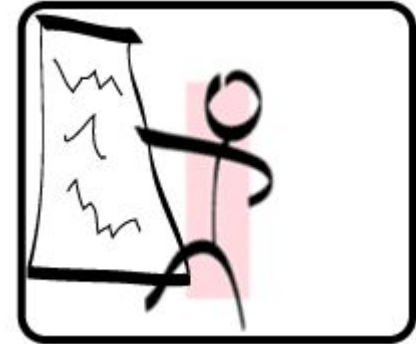
- Shelter Projects (1)
- Construction standards (2)
- Housing, land and property (3)
- NFI practices (4)
- Urban Settlement Approaches (9)
- Inclusion in shelter and settlements programming (main room)

16:00 - 16:15 Break

16:15 Gallery walk - highlights

Communicating the outputs

In the last part of your WG session:



- Prepare a clear summary of key points on a flip chart
- Nominate someone to share the highlights in 30 secs

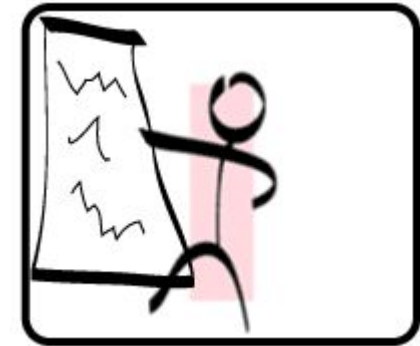
During the break: please put your poster up on a wall or board

- Gallery walk followed by highlights - in 30 seconds!

Afterwards: provide a summary of outputs for the meeting report

Advancing the GSC Strategy

Poster headings:



- Title of session
- 3 things we've learned/ discovered
- The 3 (or more) actions for 2018/19 (eg stop doing/ do differently / expand)
- An emerging question or issue
- This working group's contribution to strategy outcomes is:

Advancing the GSC Strategy

Pitch!

30 seconds each

Advancing the GSC Strategy

11:30 - 13:00 - Round 1

- Shelter Projects (room 1)
- Promoting Safer Building (room 2)
- Shelter Vulnerability Classification (room 3)
- Shelter and Cash (room 4)
- Urban Settlement Approaches (room 9)
- Inclusion in shelter and settlements programming (main room)

Advancing the GSC Strategy

14:30 - 16:00 - Round 2

- Shelter Projects (room 1)
- Construction standards (room 2)
- Housing, land and property (room 3)
- NFI practices (room 4)
- Urban Settlement Approaches (room 9)
- Inclusion in shelter and settlements programming (main room)

13:00 - 14:30 Lunch



**Visit Iraq, Nigeria
Myanmar, Somalia**

Advancing the GSC Strategy

14:30 - 16:00 - Round 2

- Shelter Projects (room 1)
- Construction standards (room 2)
- Housing, land and property (room 3)
- NFI practices (room 4)
- Urban Settlement Approaches (room 9)
- Inclusion in shelter and settlements programming (room 6)

Advancing the GSC Strategy

Highlights

Gallery walk - 10 minutes

- Browse outputs from all working groups.
Add supportive comments on post-it notes



shutterstock.com · 1120402346

TV news flashes: 30 seconds each

- WG Chairs present the **headline** or **newsflash** item which conveys the critical take-away from the session.



shutterstock.com - 214851442

New SAG 2018 - 2019



Appointment

SAG members 2018-2019

- 1. Australian Red Cross**
- 2. CARE International**
- 3. Catholic Relief Services**
- 4. Danish Refugee Council**
- 5. Habitat for Humanity**
- 6. IMPACT Initiatives / ACTED**
- 7. InterAction**
- 8. IOM**
- 9. NRC**
- 10. Save the Children**

Reflection on today

What **stands out** for you from today? (poll)

What **question or issue is emerging** that is of particular interest?

- Reflect and share with your neighbour
- Write on a card
- Could this be a topic for the *Imagining 2020 Open Space* tomorrow?

State of Humanitarian Shelter and Settlements 2018



State of Humanitarian Shelter and Settlements 2018

Objective: to raise the profile and provide a better understanding of the humanitarian shelter and settlements sector

Audience: humanitarian policy makers, donors, governments, academics and senior managers of humanitarian agencies and institutions

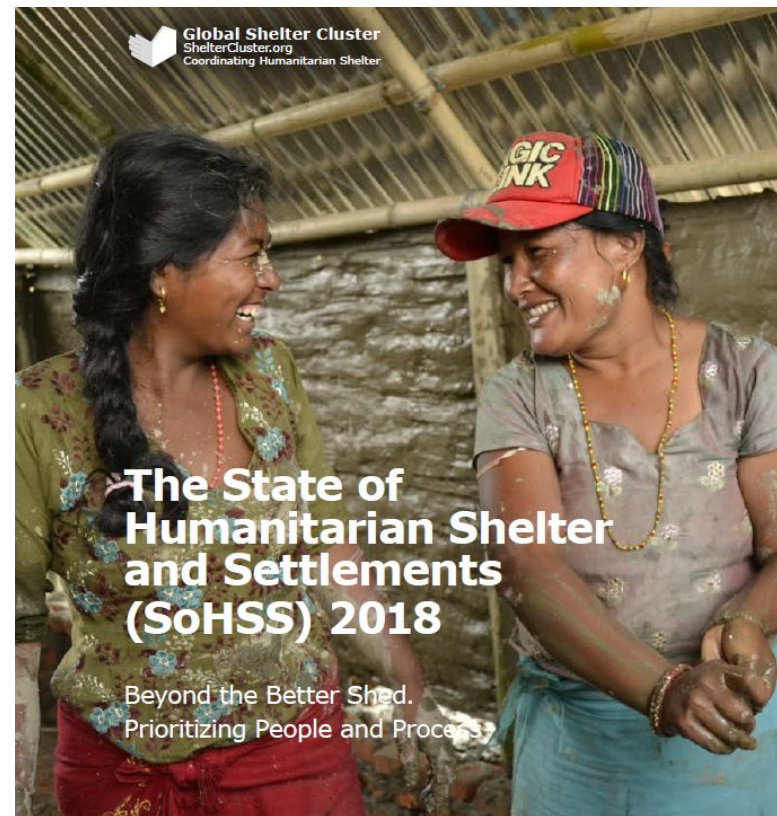
Part I:

- Challenges and Opportunities
- Tools and Understandings

Part II:

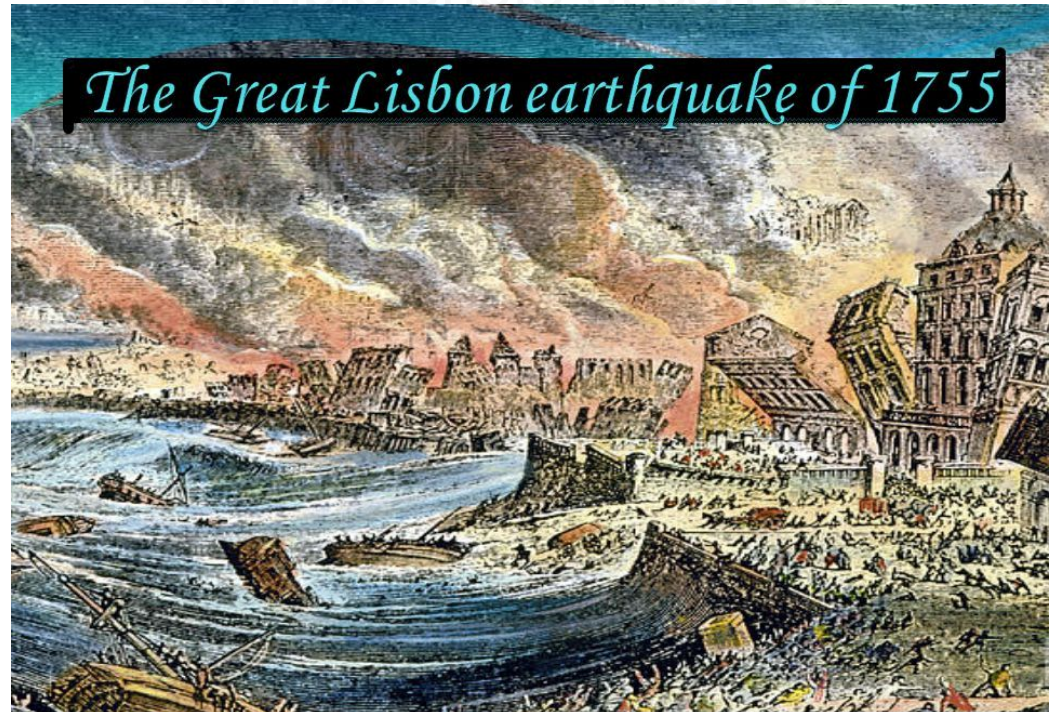
- Statistical Analysis
- Technical Annexes

19 Chapters - 13 Text Boxes - 51 Authors



The Long View Charles Parrack, Ian Davis

- A separation still exists between emergency shelter response and permanent housing
- The responses to some of the most significant disasters in history led to changes and developments that continue to influence housing and city design



Preventing dispossession Why HLP rights cannot be ignored

Kirstie Farmer (NRC), Victoria Stodart (IFRC), Leanne Marshall (AusRC), Neil Brighton (NRC)

- HLP chapter captures years of sector-leading and collaborative work
- Complements the fact that Sphere will now have a security of tenure minimum standard
- Recognised as a priority area, in the GSC strategy and more widely, so read it and be a champion for HLP!



Following Local Building Cultures Towards long-term community-based DRR

Eugénie Crété (AECC / ENSAG), Olivier Moles (CRAterre)

- An extensive collaboration of 25 diverse organizations over 8 years: (re)construction and repair programmes, educational activities, fundamental research, and development of new standards
- Supporting self-recovery through LBC is being increasingly valued. Still, questions on how to implement it more systematically require further consideration.
- Raise awareness and encourage academic research into understanding and retro-engineering local building practices



Photograph courtesy Swiss Red Cross

People First: Agency, choice and empowerment in support to self-recovery

Holly Schofield and Bill Flinn (CARE International, UK)

- **Self-recovery after disaster:** Why supporting self-recovery is so important and what are *some* of the practical steps that we can take to support it more effectively.
- **Self-recovery is not the exception it is the norm.** How do we extend the impact of interventions to reach the majority of disaster affected people who do not receive formal assistance?
- **Key message:** *‘The primary resource in the provision of post-disaster shelter is the grassroots motivations of survivors, their friends and families. Assisting groups can help but they must avoid duplicating anything best undertaken by survivors themselves’.*



Leading by example - looking to the future and implications for the shelter and settlements sector

Jake Zarins (Habitat For Humanity)

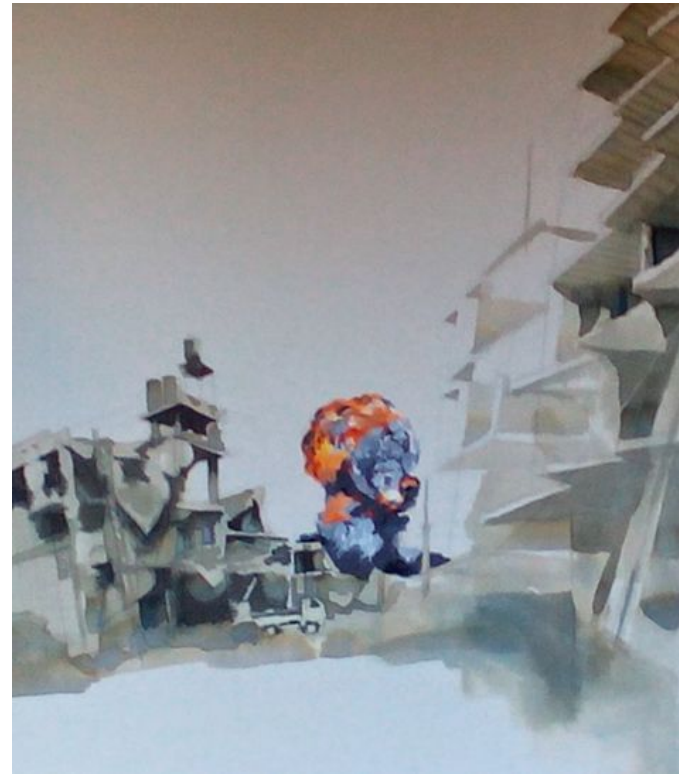
- We might all be doomed! Or at least working much harder in years to come as a result of climate change, population growth, unsustainable exploitation of resources etc unless some things start to change.
- Acknowledgement of these realities is broadly absent in our sector - as it is from society generally. But we see the evidence and should be saying more and saying it louder.
- As a sector and as part of the humanitarian community we could, and should be doing much more to **lead by example** and embed 'sustainability' more systematically into our work - and forcing a change to a more holistic view of addressing causal issues rather than endless, expensive and low impact firefighting.



The Grand Bargain: Challenge or Opportunity?

Lizzie Babister (Independent)

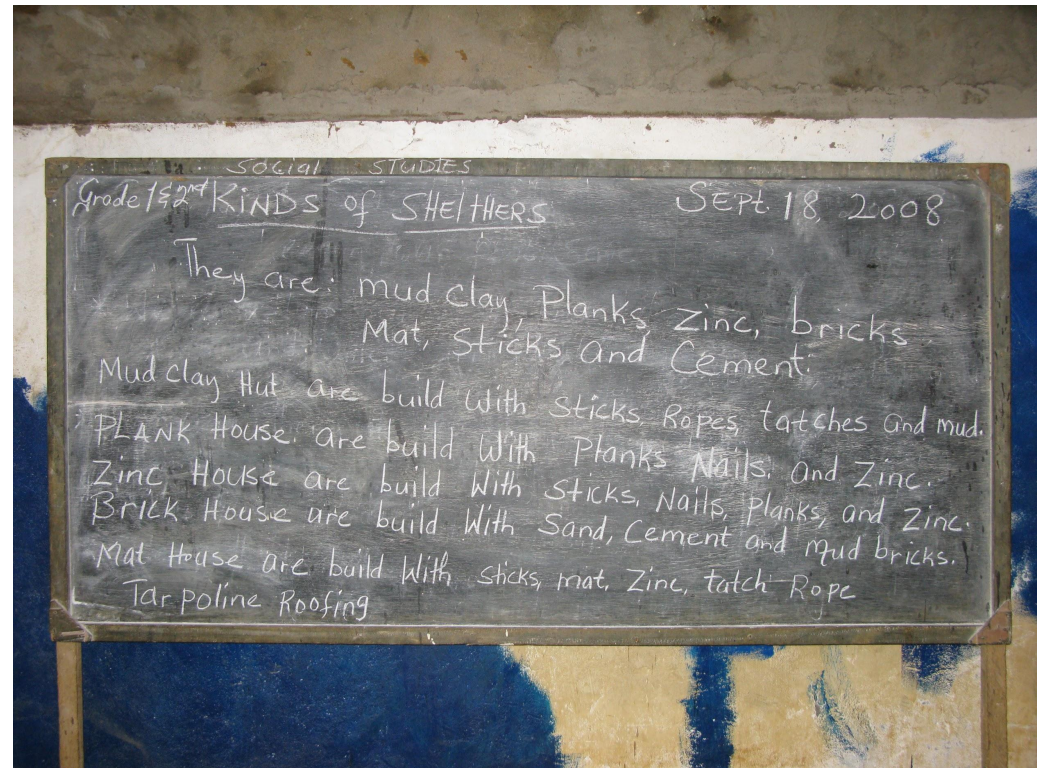
- The Grand Bargain provides a platform for the shelter and settlements sector from which to advocate for system-level change.
- How can we ensure that the Grand Bargain's overarching aim of efficiency is balanced against the needs of the most vulnerable recovering their shelter and settlements?



Building with cash: Choice, quality and the importance of technical assistance

Jake Zarins (Habitat For Humanity) and Tom Bamforth (IFRC)

- Multi Purpose/Unconditional cash is a reality the shelter sector needs to embrace, and a tool we will need to learn how to programme with.
- The primary concern of the shelter and settlements sector is – and should be – to ensure that families affected by emergencies have a safe, adequate, and dignified place to live.
- The key to ensure we can meet this objective in a world of cash is to drastically increase focus, expertise and efforts around the technical assistance we provide to affected communities by making use of technology and different skill sets - and convincing donors of its value and importance.



The weight of a standard

by Seki Hirano, Christine Knudsen and Ela Serdaroglu

- Standards are distilled wisdom. Helpful humanitarian standards are developed through consensus, informed by the most current technical knowledge and practice, drawing upon global experience and are refined to be locally applicable.
- Not about global standardisation of metrics but more about adapting the standard itself to the context of a specific situation: **reference point** and **contextualization**
- The weight of a standard is due to the fact that they translate fundamental rights and principles into action to save lives, promote dignity and recovery.



Divided we fall: coordination/collaboration

Tom Bamforth (IFRC), Miguel Urquia (UNHCR)

- **Under pressure!**

There is a spectrum of coordination: exchange of information, **communication, alignment**, merging of programs and organisations. Humanitarian coordination faces numerous challenges

- **Challenges:**

Coordination systems remain international focussed: how to engage effectively with private sector, local civil society, government counterparts or regional response platforms (eg. ASEAN/AHA Centre)?

How to maintain interest in protracted emergencies?

Transition to recovery suffers from lack of agency/institutional continuity and relatively short term funding for emergency response.



The road to effective sector-wide assessments

Elisabeth Vikman (REACH)

- What do effective assessments have in common?
- How can we accurately measure “the gap”?

...and the underlying / causal factors of the gap?



Transition to recovery

Maggie Stephenson (Independent)

Humanitarian shelter actors achieve little in housing and settlement recovery. The gaps are greater than the coverage. We are fragmented, over-ambitious and in a hurry.

what are we trying to achieve?

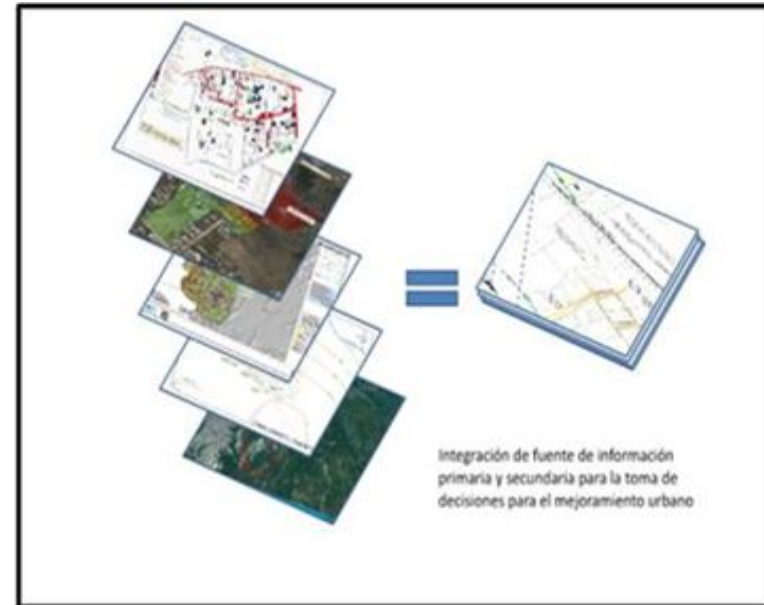
what is our added value?

- recovery as a process, longer than us
- recovery as an complex ecosystem, with many stakeholders and relationships
- recovery rights, protection, inclusion, accountability, access

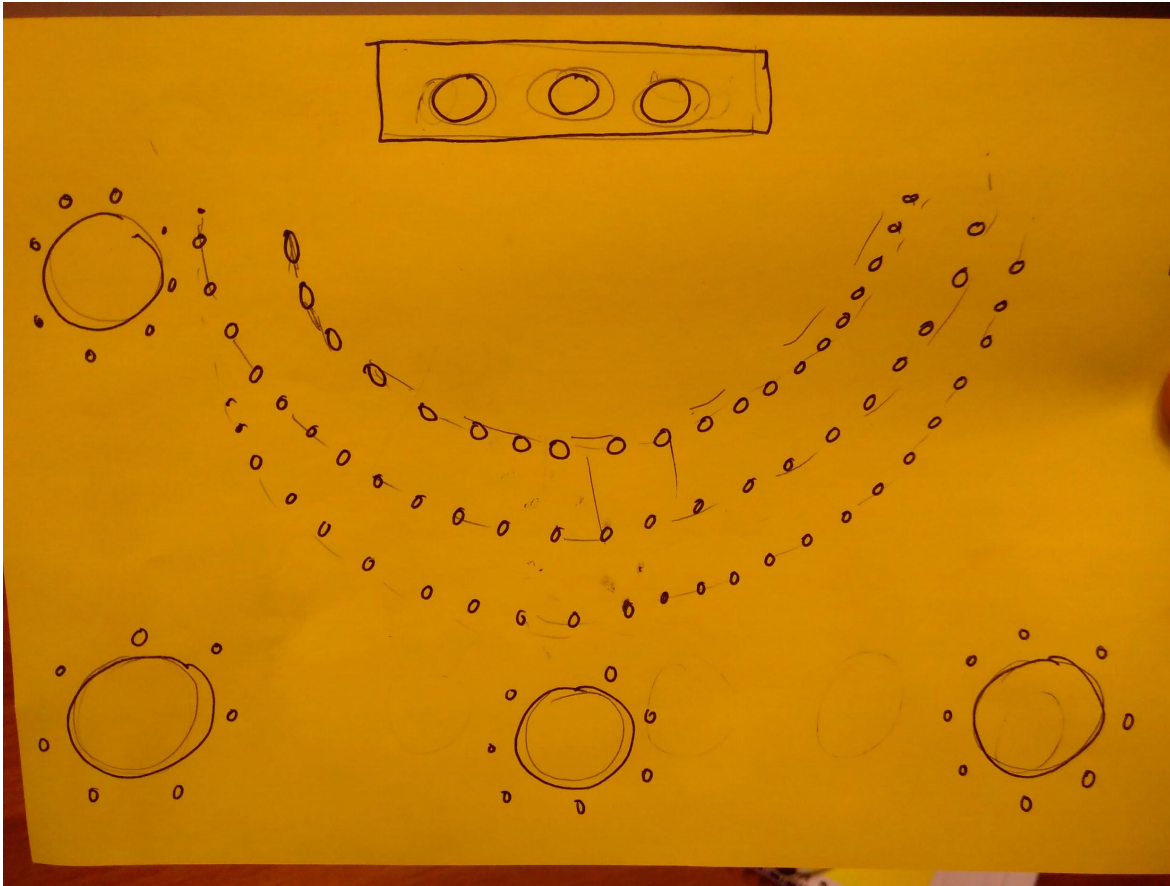


Importance of the Settlements Approach

- Settlements, Where we Live and Work, Provide **CONTEXT**, and are the Multi-sector **PLATFORMS** for promoting Survival, Production, DRR, and Longer-Term Recovery
- The integration of info and action in defined locations enables engagement with **new** audiences, **new** resources, and **new** opportunities, which can lead to **new** options for action
- This approach is particularly useful in urban settings.



Practical test of GSC logistics capacity



The desired layout for tomorrow.

You have 10 minutes to transform the room.

Who wants to lead?

GSC meeting 2018

Geneva 3-4 October

DAY 2

WELCOME BACK!



Day 2 - Thursday 4 October

- **Ignite! Challenging our thinking with insights and ideas from beyond the sector**, with invited guests
- **Imagining Shelter 2020**: how can we strengthen shelter and settlements responses?
 - Confirm the topics for discussion and round 1

Lunch - 13:00-14:00

- **Imagining Shelter 2020**
 - Confirm the topics for discussion and round 2
 - Highlights
- **Meeting review and wrap up**
- **Close** at 17:30

Ignite: Challenging our thinking with insights and ideas from beyond the shelter sector

with

Panos Moumtzis, Regional Humanitarian Coordinator, Syria
Dr Anthony Land, Sr Fellow, Fordham University

Yes! And

The problem:

“No!”

“Yes, But...”

Yes! And

OBJECTIVE: We want to agree a great day out to celebrate your aunt or uncle's birthday

Round 1: YES BUT

Person 1: "Let's..."

Person 2: "Yes... But...."

Change over...

Person 2: "Let's..."

Person 1: Yes... But..."

Yes! And

Round 2: Yes! And...

(They say “Yes” to the idea, and they **BUILD** on it).

Person 2 suggests an activity. “Let’s....”

Person 1 responds: “Yes! And we could...”

Person 2 responds: “Yes! And we could...”

Person 1 responds: “Yes” And we could...”

Yes! And

Round 3: Getting past “Yes, But”

“Yes! And....” Add “W I L A Y I”

Person 1: “Let’s.....”

Person 2: “Yes! **What I Like About Your Idea Is...**
And we could...”

Person 1: “Yes! **What I Like About Your Idea Is...**
And we could...”

Imagining 2020



Looking forwards to 2020, we will have reached the midpoint of the 2018-2022 GSC strategy

What crucial conversations do we need to have now to transform our approach and impact?

An invitation to:

- host a discussion on an issue you feel strongly about, or
- contribute to discussions of interest that are hosted by others.

Break Out
Rm 1

The Master Plan approach
to settlement planning
- guiding principles

Rafael Mattar Neri

Break Out
Room 2

How do households
recover from rapid
rapid onset
emergencies?

Lizzie Babister

Break out
Room 3

We need to empower
recovery actors!

Seti Hiron

HOW DO WE WORK WITH
LINKAGES BETWEEN
SHELTER → RECOVERY
REGISTRATION
STABILIZATION
HOUSING.

Break out
Room 4

Prefabricated shelter
in humanitarian
response

Ammar Al Mahdawi

M5

Defining 'better' better; why
health, sanitation, vector
control, well-being and
livelihoods are just as
important as structural
safety

Bill Finn

M6

Assessing/screening
environmental risk
in shelter operations

Mandy George

M7

DO YOU NEED
ANY SUPPORT
TO DEAL WITH
EXPLOSIVE HAZARD
(mines, IEDs, ERW)

M8

HOW TO BETTER
UNDERSTAND LOCAL
BUILDING PRACTICES?
APPLICABILITY
AND ACCOUNTABILITY

M9

M10

2
15:15

Break out
Room 1

Room 2

Room 3

Room 4

M5

How do we disseminate the SoHSS report so it does not become something we ~~put~~ put on the shelf?

CORRUPTION

M6

M7

M8

M9

M10

FUNDING GAPS
HOW WOULD WE IDENTIFY/MEASURE IMPACT OF UNDERFUNDING OF SHELTER RESPONSES?
CHARLES

ARE HUMANITARIANS UP FOR THE CHALLENGE OF WORKING IN URBAN AREAS?
+ SLUM UPGRADES (Sandra)

How to implement better shelter standards in complex emergencies

WHAT CAPACITY GAPS WILL WE STILL HAVE IN 2020?
HOW CAN WE PLAN TO FILL/AVOID THEM?

How do we change mindsets around centrality of protection/inclusion?
How is it universal rather than an add

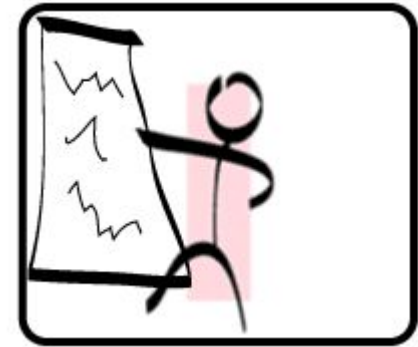
Imagining 2020 - output

Create a poster

Display it - after the session

Tell us - your key message

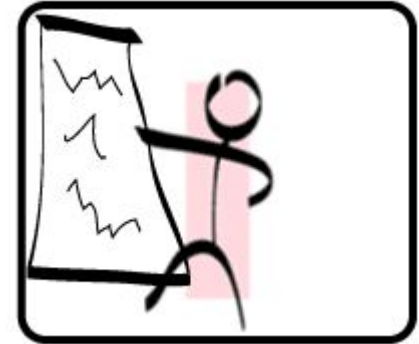
Write and send your points to Shirin



Imagining 2020 - output

Create a poster

- The topic + which strategic aim
- What's come out of the conversation
 - your key message
 - proposed actions
 - what will be different in 2020 as a result
- Who's going to be involved, who will lead, what's the next step



Thursday afternoon outline

2.30 Group photo outside
2:40 announcements

Imagining Shelter 2020 PART 2

2:45: Round 1 hosts present key messages

3:00: Check topics, hosts, locations for R2

3:15-4.15 Round 2 discussions

4:15-4.30 Tea

4:30-4:45: R2 hosts present key messages

4.45: Evaluation and wrap up

Imagining 2020 - Yes! And ...

How you can help make this a success

- Hosts - 1 key message
- Visitors - how you can contribute
 - Add your name if you want be involved
 - Add useful comments - to help make this succeed

GSC Meeting Survey

<https://www.surveymonkey.com/r/ShelterMeeting2018>

