

**Shelter Cluster Bangladesh**

ShelterCluster.org

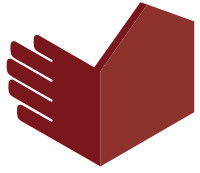
Coordinating Humanitarian Shelter

# Shelter Cluster Meeting Bangladesh Floods 2019

8 August 2019, 10am

Venue: IFRC Office

Building No. 2, North Side, 684-686, Red Crescent Sarak, Bara  
Maghbazar, Dhaka 1217, Bangladesh



**Shelter Cluster Bangladesh**

ShelterCluster.org

Coordinating Humanitarian Shelter

# Agenda

1. Introductions
2. Purpose of 2019 Floods Shelter Cluster
3. Humanitarian Response and Recovery Plan
4. JNA Summary of Shelter Needs / Tools
5. Partner Updates
6. Shelter Cluster Priorities / Needs of Partners
7. Next meeting / Location

# Shelter Cluster 2019 Floods - Purpose

- Resource for your organization
- Forum to share data (via 4W matrix) and assessments across shelter sector
- Identify gaps in assistance and advocate for further funding
- Coordinate aid by location and type to best target assistance
- Ensure equity of aid to beneficiaries by encouraging standardization of NFIs/cash assistance/training
- Aim to meet biweekly
- Visit: <https://www.sheltercluster.org/response/bangladesh-monsoon-flooding-2019> for updates and tools

# Shelter Cluster Focal Points

**Martin de Vries**, Coordinator, Flood Response, Shelter Cluster Bangladesh

Mob. +1613 852 8488 | Email: [coord1.bd@sheltercluster.org](mailto:coord1.bd@sheltercluster.org) | Skype crc\_io\_mdevries |  
Web [sheltercluster.org/response/bangladesh-monsoon-flooding-2019](http://sheltercluster.org/response/bangladesh-monsoon-flooding-2019)

**Arif Abjullah Khan**, Programme Specialist (Climate Change and Disaster Risk Management),  
United Nations Development Programme Email [arif.abdullah@undp.org](mailto:arif.abdullah@undp.org)

**Hasibul Bari Razib**, Sr. Manager-Humanitarian Response & Shelter

International Federation of Red Cross and Red Crescent Societies

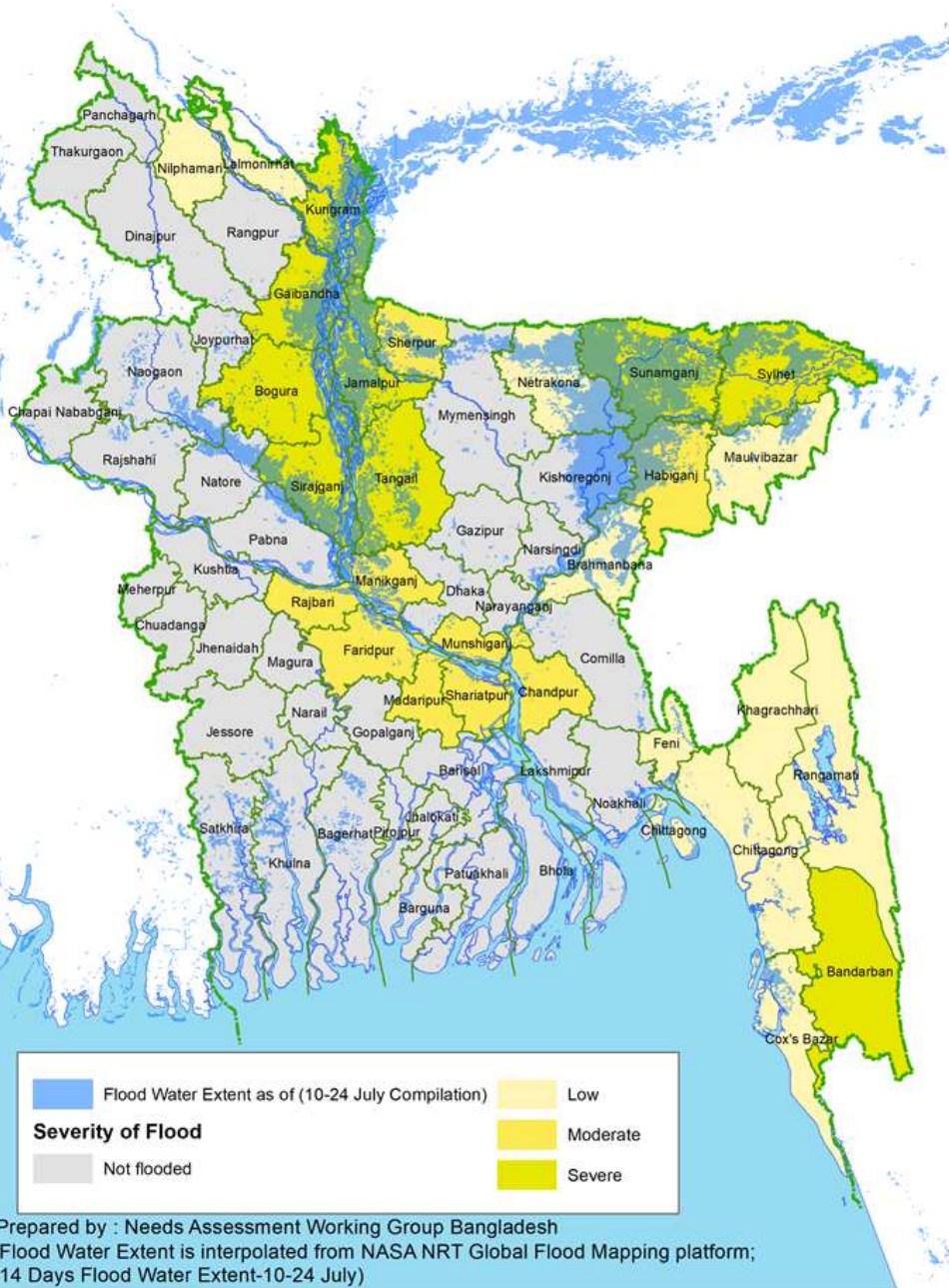
Bangladesh Delegation | 684-686, Bara Maghbazar | Dhaka - 1217 | Bangladesh

Tel. +88 02 9337314, 9345393 | Fax. +88 02 9341631 | Mob. +88 01718 535128

Email [hasibul.bari@ifrc.org](mailto:hasibul.bari@ifrc.org) | Skype hasibulbari

# Summary of Shelter Needs Severity of Flooding

---

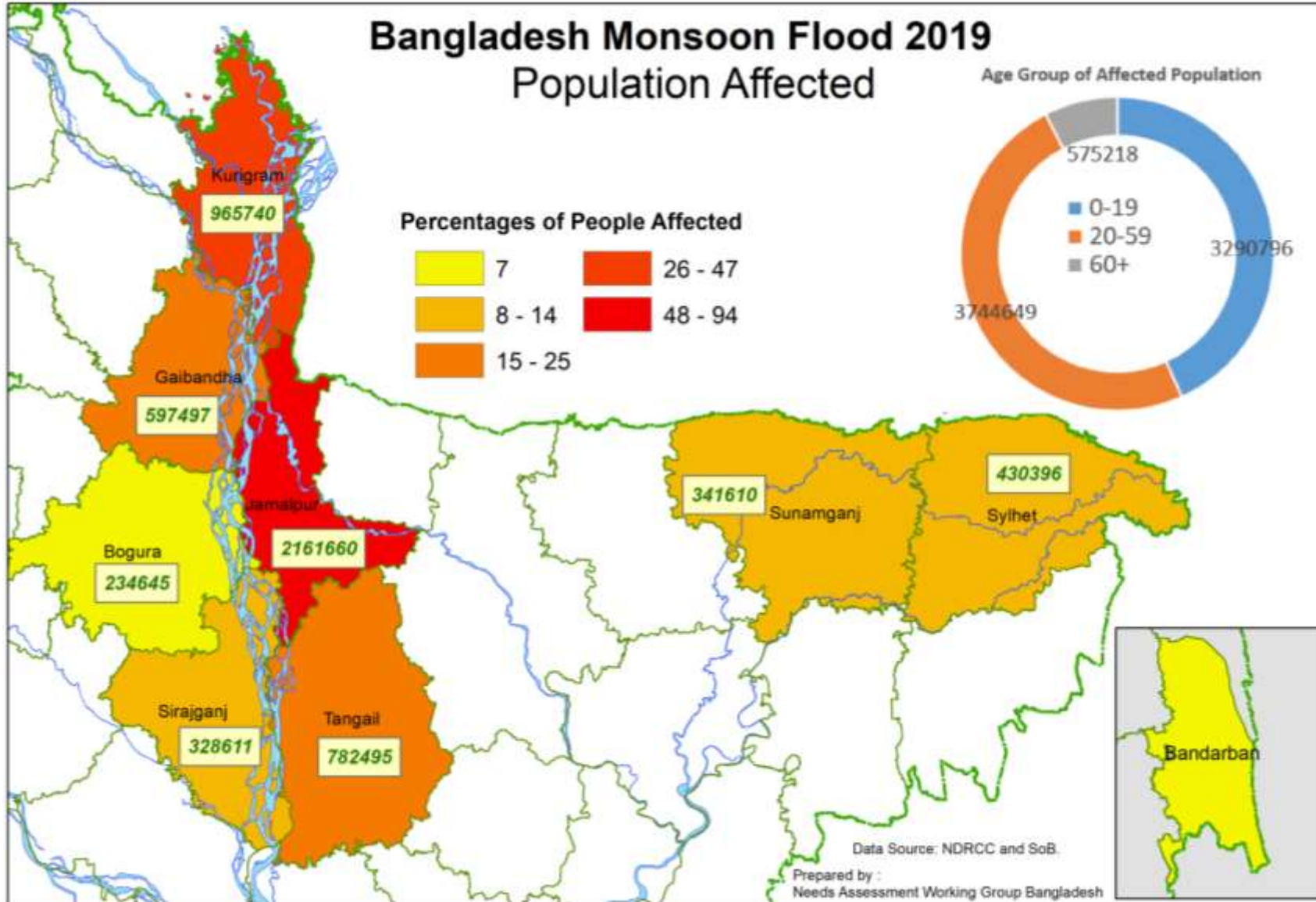


## 9 Districts most affected:

1. Jamalpur
2. Kurigram
3. Gaibandha
4. Sirajganj
5. Bandarban
6. Bagura
7. Tangail
8. Sunamganj
9. Sylhet

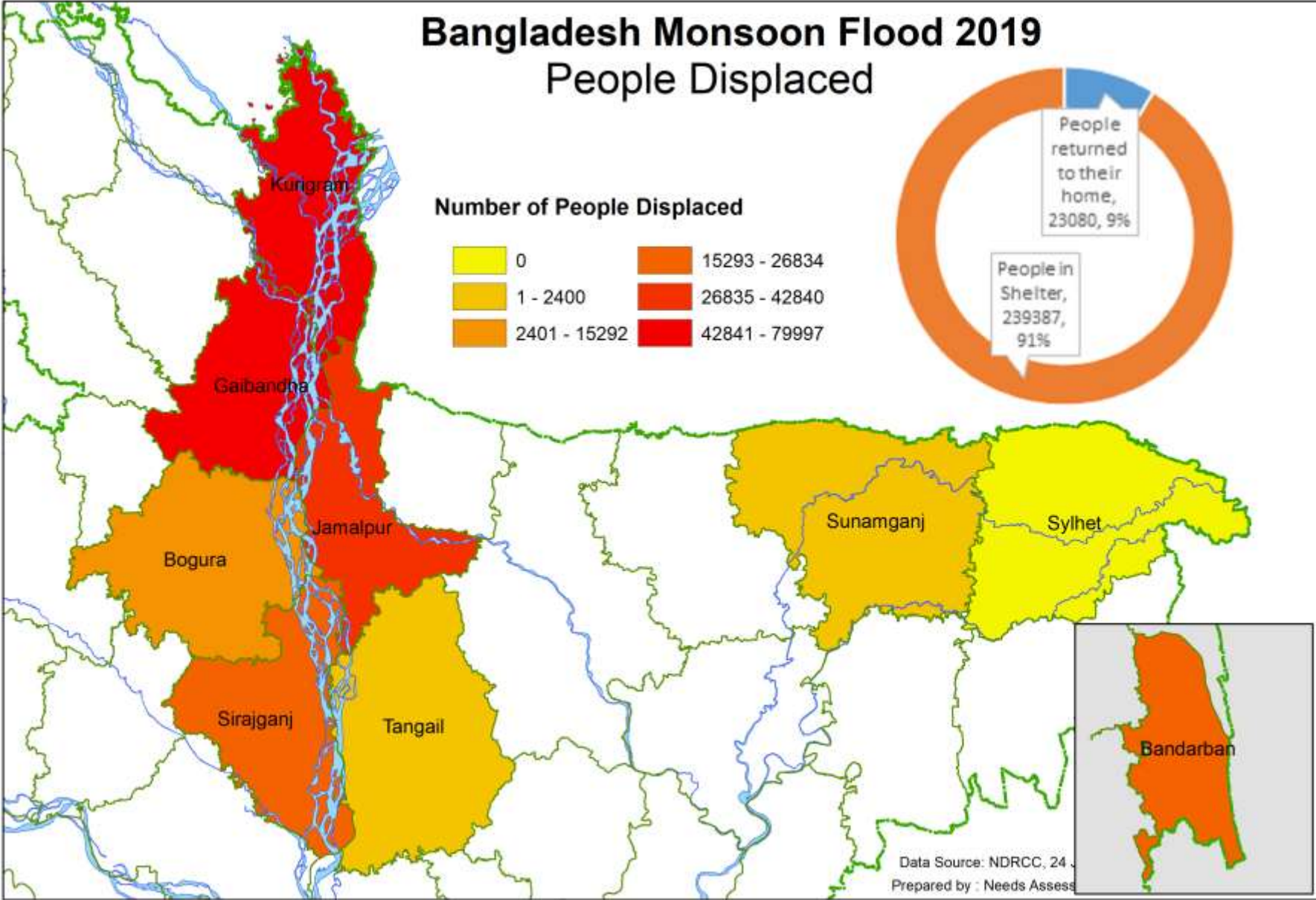
# Bangladesh Monsoon Flood 2019

## Population Affected



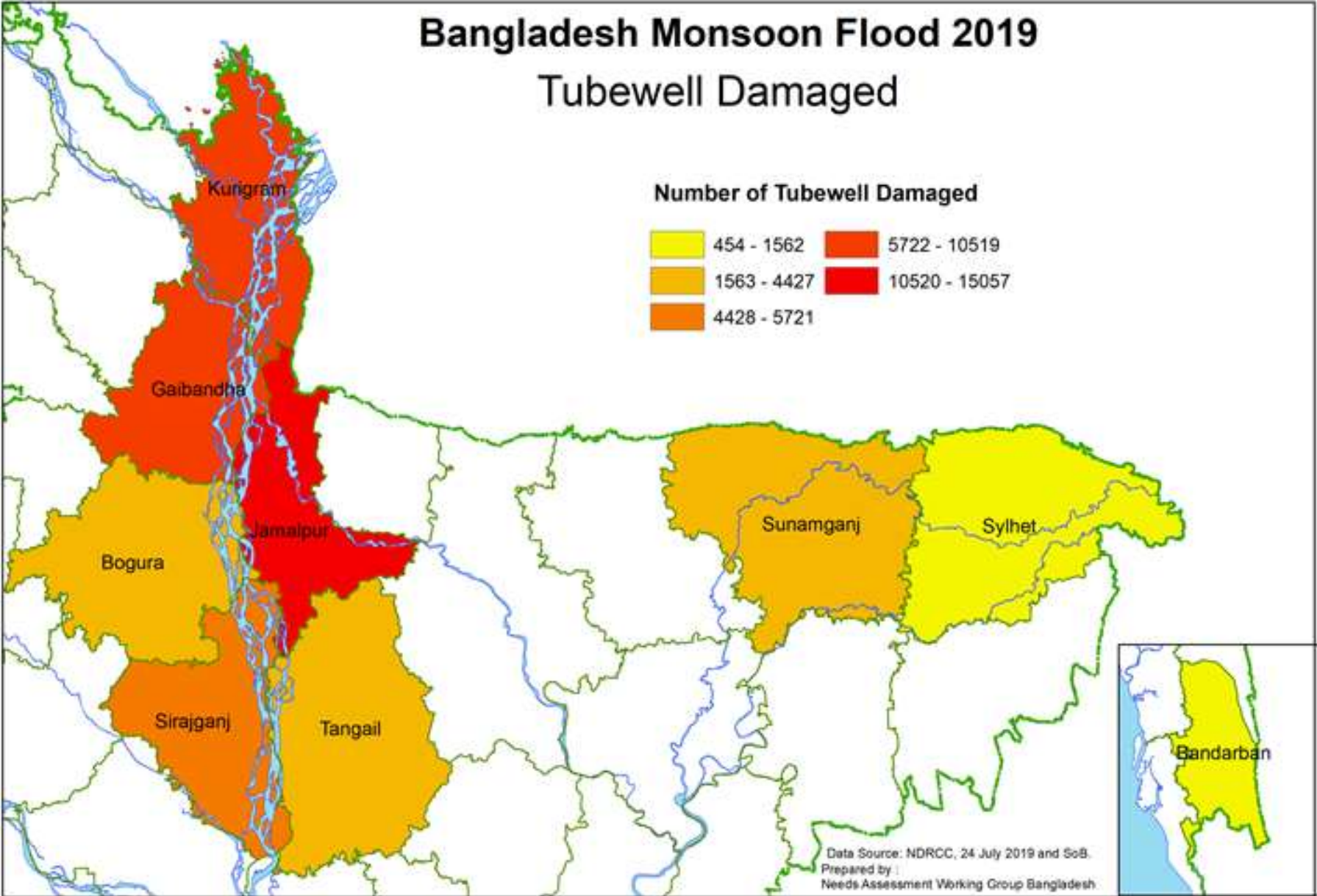
# Bangladesh Monsoon Flood 2019

## People Displaced



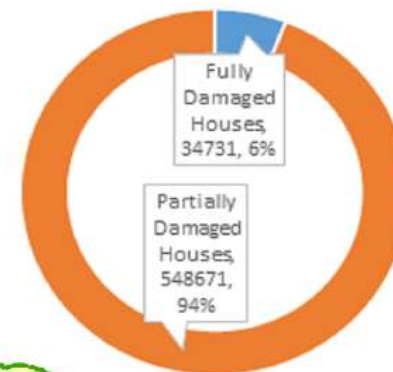
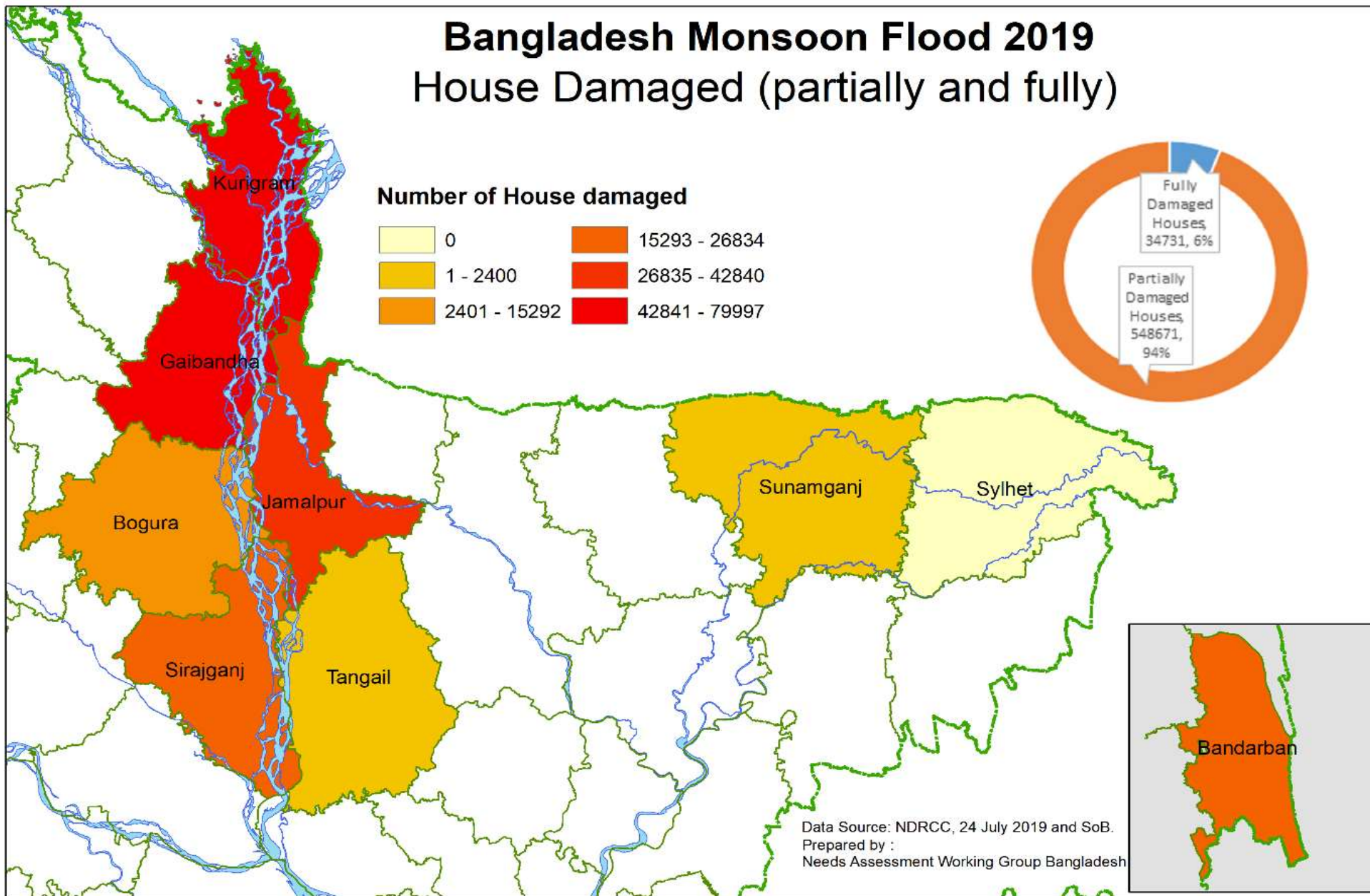
# Bangladesh Monsoon Flood 2019

## Tubewell Damaged

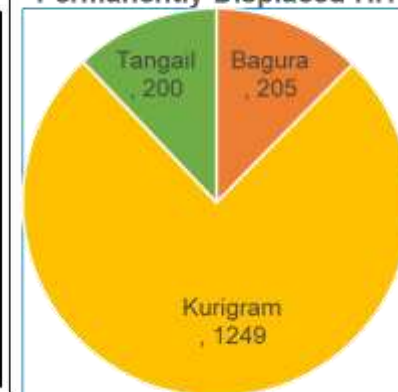


# Bangladesh Monsoon Flood 2019

## House Damaged (partially and fully)



River Bank Erosion Permanently Displaced HH



# Shelter Needs - Summary

**Needs (as per [Humanitarian Response and Recovery Plan](#)):**

**Target:** 243,000 beneficiaries in 9 most affected districts. A large number of flood-affected people were displaced and still some people are living in temporary shelters, schools, embankments and roads in Kurigram, Gaibandha, Jamalpur, Sirajganj, Tangail and Bogura

**Criteria:** Loss of house either fully or partially and one of the following: female-headed HH, HH with disabled and elderly, landless/day labourers and small/marginalized farmers, families with children no longer going to school.

**Time Period (Aug 2019 – Apr 2020):**

Phase 1: Emergency shelter needs for vulnerable displaced HH.

Phase 2: To assist affected HH to return home and provide NFIs and technical support / To provide technical design support and access to low cost finance for self build/repairs.

# Government of Bangladesh Shelter Response in 9 Districts (as of 5 August 2019)

## Provision of:

- 5,000 tents for temporary shelters
- 11,600 bundles of Corrugated Iron Sheet (CIS)\*
- 35 million BDT housing grants

Breakdown by district to come

*\*Bundle = 6 x 12' sheets.*

# Cross-Cutting Issues to Consider

- WASH
- Environment
- Flood Risk Reduction Measures
- Livelihoods
- Housing Land and Property
- Community Infrastructure
- Localization

# Bangladesh-Specific Shelter Tools

## **NFI Standards**

- [Bangladesh Shelter Cluster Standards and Guidelines, 2015](#)

## **Gender and Protection**

- [Gender and Diversity in Emergency Shelter Programming, 2018](#)

## **Shelter Training**

- [Participatory Approach to Safe Shelter Awareness \(PASSA\)](#)
- [Flood Build Back Better IEC Materials, 2018](#)

## **Land and Property**

- [Housing Land and Property Law \(Draft\), 2017](#)

## **Reconstruction**

- [Bangladesh Shelter Solutions, 2013](#)
- [Bangladesh National Standard Rural Housing in Disaster Prone Areas \(compressed version\), 2016](#)

